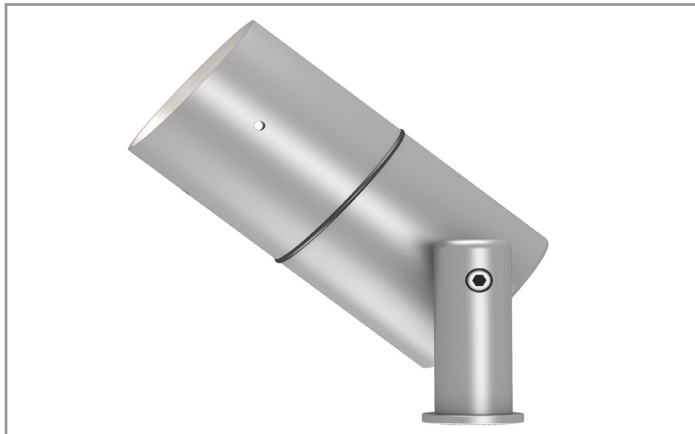


Project		Catalog #		Type	
Prepared by		Notes		Date	



Lumière

Cambria 203

LED / Halogen
Accent / Flood

Typical Applications

- Hospitality • Commercial Landscape • Outdoor Area/Site • Residential
- Architectural

Interactive Menu

- Order Information [page 2](#)
- Cambria 203 MR16 Halogen Photometric Data [page 3](#)
- Cambria 203 LED Photometric Data [page 4](#)
- Product Warranty

Product Certification



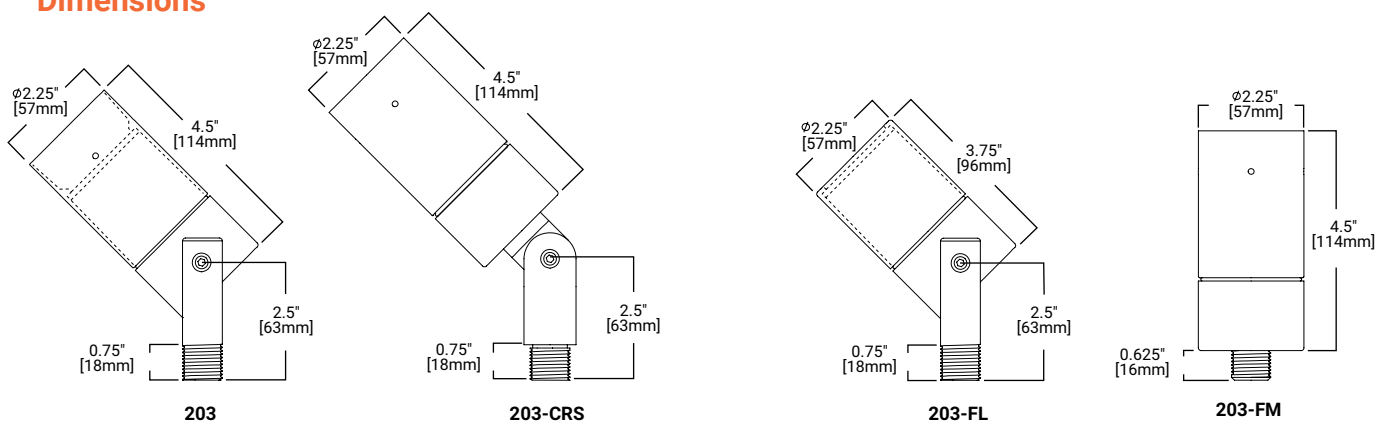
Product Features



Top Product Features

- 340° tilt, 360° rotation
- Precision-machined aluminum, brass, bronze, copper or stainless steel
- Stainless steel hardware
- Siphon Protection System (S.P.S.)
- Holds up to three optical accessories
- Three-year warranty

Dimensions



TECHNICAL DATA
8W LED, L70/60,000 hours at 25°C
Low Voltage: 50W Halogen MR16

Order Information

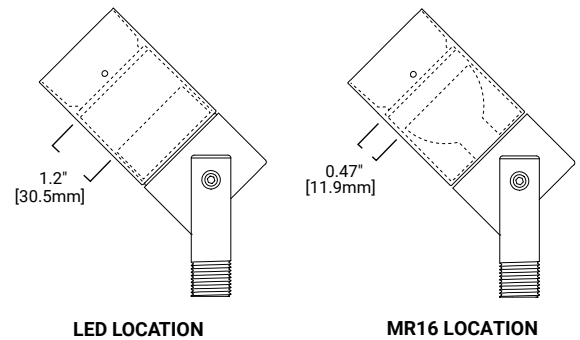
SAMPLE ORDER NUMBER: 203-FL-50MR16-12-NSS

Series	Construction	Source (for LED, select from each column and combine)	Voltage	Finish						
203=LED or MR16 Cambria Accent Fixture	____=Standard Side Swivel Stem, 1/2" NPS CRS=Center Rear Swivel Stem, 1/2" NPS FM=Rear Flush Mount, 1/2" NPS FL=Flush Lens, Side Swivel Stem, 1/2" NPS	50MR16=50W max. Halogen MR16 (lamp not included) <table border="1"> <tr> <td>8LED=8W LED</td> <td>27=2700K 30=3000K 40=4000K*</td> <td>10=10° Spot 25=25° Narrow 36=36° Wide</td> </tr> <tr> <td>5LED=5W LED</td> <td>AM=Amber* (585-595nm)</td> <td>25=25° Narrow</td> </tr> </table>	8LED=8W LED	27=2700K 30=3000K 40=4000K*	10=10° Spot 25=25° Narrow 36=36° Wide	5LED=5W LED	AM=Amber* (585-595nm)	25=25° Narrow	12=12V	Painted BK=Black BZ=Bronze CS=City Silver VE=Verde WT=White Premium Finish NBR=Natural Brass NCP=Natural Copper NBZ=Natural Bronze* NSS=Natural Stainless Steel
8LED=8W LED	27=2700K 30=3000K 40=4000K*	10=10° Spot 25=25° Narrow 36=36° Wide								
5LED=5W LED	AM=Amber* (585-595nm)	25=25° Narrow								
Notes	Notes	Notes	Notes	Notes						
		* Not Title 20 compliant.		* For natural bronze ROHS material consult factory.						

Optical Accessories - Order Separately

Filters (2.00" Diameter)	Optical Lenses (2.00" Diameter)	Optical Louvers (2.00" Diameter)
F71= Peach Dichroic F72= Amber Dichroic F73= Green Dichroic F74= Medium Blue F75= Yellow Dichroic F76= Red Dichroic F77= Dark Blue Dichroic F78= Light Blue Dichroic F79= Neutral Density Dichroic F80= Magenta Dichroic F22= Red Color F33= Blue Color F44= Green Color F55= Yellow Color F66= Mercury Vapor	LSL= Linear Spread Lens (elongates standard beam spread) DIF= Diffused lens (provides even illumination) OSL= Overall Spread Lens (increases standard beam spread)	LVR=45° Hex Cell Louver (reduces glare)
Notes	Notes	Notes

Lamp or LED Module Replacement



Mounting Accessories - Order Separately

Ground Mounting	Surface / Wall Mounting	Low Voltage Tree Mounting
GS01= 1-1/2" x 6-3/4" (38mm x 171mm) cast zinc ground spike. GS03= 2-3/8" x 6-5/8" (960mm x 168mm) aluminum ground spike with integral 12V wiring compartment. Specify powder paint finish (BK,BZ,CS,VE,WT) GS04= 1" x 16-1/2" (25mm x 419mm) aluminum ground spike with integral 12V wiring compartment. Specify powder paint finish (BK,BZ,CS,VE,WT) GS05= 1" x 16-1/2" (48mm x 438mm) black polycarbonate ground spike with 2"-13" height adjustment - requires fixture with extended stem. GS08= 1-7/8" x 8" (48mm x 203mm) black ABS ground spike. GS13= 3-3/4" x 4-1/2" (95mm x 114mm) brass/stainless steel 3 prong ground spike.	FS1= 2-7/8" x 4-5/8" (73mm x 117mm) rectangular wall plate or box cover with single 1/2 NPS mounting hole. FS2= 2-7/8" x 4-5/8" (73mm x 117mm) rectangular wall plate or box cover with dual 1/2 NPS mounting holes. RS1= 4-1/2" (144mm) machined aluminum standard round wall plate with single 1/2 NPS mounting hole. RS2= 4-1/2" (114mm) machined aluminum standard round wall plate with single 1/2 NPS mounting hole. TM01= 2-3/16" x 1-1/2" (71mm x 38mm) round mount for installation on trees or other wood surfaces with 1/2 NPS mounting hole. TM05= 3-7/8" x 2" (98mm x 51mm) rectangular tree/surface mount with wiring compartment and single 1/2 NPS mounting hole.	TM04= 2-1/2" x 4-1/4" (64mm x 108mm) expanding tree strap with self adjusting tension release for one fixture mount. Designed for a maximum tree diameter of 24" (610mm). TM04-2= two fixture mount. TM04-3= three fixture mount. TM04-4= four fixture mount. TM07= tree friendly ring with adjustable stand-offs. Accommodates 18"-24" (457mm - 610mm) tree diameter. TM07-2= two fixture mount. TM07-3= three fixture mount. TM07-4= four fixture mount. TM07-6= six fixture mount.
Notes	Notes	Notes

Product Specifications

Material

- Housing, hood and mounting stem are precision-machined from corrosion-resistant billet stock 6061-T6 aluminum, C360 brass, C932 bronze*, C110 copper or 303/304 stainless steel

Finish

- Fixtures constructed from 6061-T6 aluminum are double protected by an ROHS* compliant chemical film undercoating and polyester powdercoat paint finish, surpassing the rigorous demands of the outdoor environment
- A variety of standard colors are available

Brass, Bronze*, Copper or Stainless Steel

- Fixtures constructed from brass, bronze*, copper or stainless steel are left unpainted to reveal the natural beauty of the material
- Brass, bronze* and copper will patina naturally over time

Hood

- Hood is removable for easy relamping and accepts up to three internal accessories at once (lenses, louvers, filters) to achieve multiple lighting effects
- Model 203, 203-CRS & 203-FM: Weep holes prevent water and mineral stains from collecting on the lens, even in the straight-up position
- Model 203-FL: The flush lens design reduces fixture length, minimizes debris collection and prevents water and mineral stains from collecting on the lens

Gasket

- Housing and hood are sealed with a high temperature silicone o-ring gasket to prevent water intrusion

Lens

- Tempered glass lens, factory sealed with high temperature adhesive to prevent water intrusion and breakage due to thermal shock

Mounting Stem

- Model 203 and 203-FL include fully adjustable side-mounted swivel stem, providing 340° tilt and 360° rotation for easy aiming
- Center rear swivel (203-CRS) or stationary rear flush mount (203-FM) models are also available
- All models include 1/2" NPS threaded male fitting
- Stainless steel aim-locking mechanisms are standard (not available on 203-FM)
- Lumière's exclusive Siphon Protection System (S.P.S.) prevents water from siphoning into the fixture through its own lead wires

Hardware

- Stainless steel hardware is standard to provide maximum corrosion-resistance

Socket

- Ceramic socket with 250° C Teflon® coated lead wires and GU5.3 bi-pin base.

Electrical

- Remote 12V transformer required (not included)
- Initial power draw on LED equipped fixtures is 12 watts
- When sizing transformer use 12 watts per LED fixture
- Nominal power draw after start up is 8 watts
- LEDs are more voltage sensitive than standard halogen MR16 lamps
- The LED module is designed to operate within the range 12V +/- 1.2V. Any less or more voltage can cause premature failures

Lamp

- Halogen lamp not included
- SORAA LED modules are included
- Available in three color temperatures (2700, 3000 and 4000) or Amber (585-595nm)
- Three distributions (spot, narrow, and flood)
- Both color temperature and distribution must be specified when ordering. Soraa lamp compatible (8W Max)

Compliance

- Tested to IESNA LM-79 and LM-80

Warranty

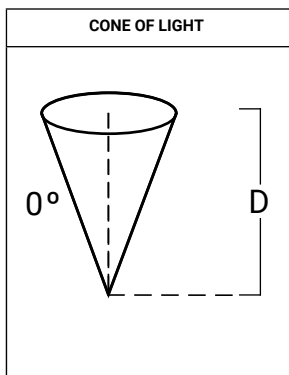
- Three year warranty standard.

*For natural bronze ROHS material consult factory.

Cambria 203 MR16 Halogen Photometric Data

[View IES files](#)

Horizontal Illuminance on Surface - Cambria 203 Standard Recessed Hood - 50W MR16



Filename	203-50MR16-12-BK-NSP.ies	
Lamp	50W MR16 NSP	
CBCP	11,000	
Distance	FC	Beam Diameter
2'	2550	1'6"
4'	638	1'0"
6'	283	1'6"
8'	159	2'0"
10'	102	3'0"
15'	45	4'0"

Filename	203-50MR16-12-BK-NFL.ies	
Lamp	50W MR16 NFL	
CBCP	3,200	
Distance	FC	Beam Diameter
2'	725	1'0"
4'	181	2'6"
6'	81	4'0"
8'	45	5'0"
10'	29	6'6"
15'	13	10'0"

CCT MULTIPLIER TABLE

LAMP WATTAGE	MULTIPLIER
20W	0.32
35W	0.57

Filename	203-50MR16-12-BK-FL.ies	
Lamp	50W MR16 FL	
CBCP	2,000	
Distance	FC	Beam Diameter
2'	431	1'6"
4'	106	3'0"
6'	48	5'0"
8'	27	6'6"
10'	17	8'0"
15'	7	12'0"

Filename	203-50MR16-12-BK-WFL.ies	
Lamp	50W MR16 WFL	
CBCP	1,200	
Distance	FC	Beam Diameter
2'	269	2'0"
4'	67	4'6"
6'	30	7'6"
8'	17	9'0"
10'	11	11'6"
15'	5	17'0"

NOTES AND FORMULAS

- Beam diameter is to 50% of maximum footcandles, rounded to the nearest half-foot.
- Footcandle values are initial. Apply appropriate light loss factors where necessary.
- Bare lamp data shown. Consult lamp manufacturers to obtain detailed specifications for their lamps.

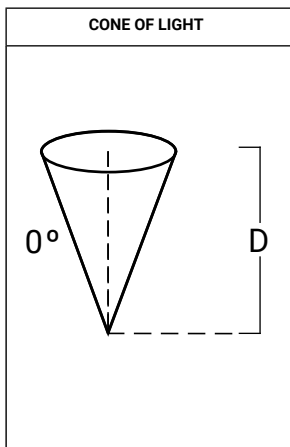
Cambria 203 LED Photometric Data

LED Lumen and CBCP Table - 3000K

 View IES files

		Flush Hood			Regressed Hood (Black)			Regressed Hood (Silver)		
		CBCP	LUMENS	LPW	CBCP	LUMENS	LPW	CBCP	LUMENS	LPW
10	BASE	7758	456	57	7188	387	48.4	6554	385	51.4
	+DIFF	1278	372	46.5	1256	286	35.7	1206	303	40.3
	+LSL	1700	402	50.3	1685	328	41	1557	328	43.7
	+LVR	6837	315	39.9	6276	305	38.2	6010	292	38.9
	+OSL	1700	402	50.3	1685	328	41	1557	328	43.7
25	BASE	3454	536	68.7	3285	480	60.8	3026	465	63.6
	+DIFF	977	435	55.7	936	344	43.5	924	361	46.3
	+LSL	1021	482	61.8	999	406	51.4	923	401	54.1
	+LVR	1864	492	63.1	1815	443	56.1	1705	438	57.6
	+OSL	1864	492	63.1	1815	443	56.1	1705	438	57.6
36	BASE	1469	525	68.2	683	339	43.5	1444	474	60.8
	+DIFF	696	432	56.1	616	392	50.3	645	345	44.8
	+LSL	624	476	61.9	1279	324	41.5	622	408	53.6
	+LVR	1322	344	44.7	1197	434	56.3	1242	323	42.5
	+OSL	624	476	61.9	1279	324	41.5	622	408	53.6

Horizontal Illuminance on Surface - Cambria 203 Standard Recessed Hood - 3000K



Filename: 203-SS-8LED3010-12-BK.ies			
Test No.: P349415			
Distance	FC	Beam Diameter	
2'	1797.1	0.4	
4'	449.3	0.8	
6'	199.7	1.2	
8'	112.3	1.6	
10'	71.9	2	
15'	31.9	3.2	
20'	18	4.2	
30'	8	6.4	
40'	4.5	8.4	

Filename: 203-SS-8LED3025-12-BK.ies			
Test No.: P349495			
Distance	FC	Beam Diameter	
2'	821.4	0.6	
4'	205.3	1.2	
6'	91.3	1.8	
8'	51.3	2.4	
10'	32.9	3	
15'	14.6	4.6	
20'	8.2	6	
30'	3.7	9.2	
40'	2.1	12.2	

Filename: 203-SS-8LED3036-12-BK.ies			
Test No.: P349480			
Distance	FC	Beam Diameter	
2'	361.1	1	
4'	90.3	2.2	
6'	40.1	3.4	
8'	22.6	4.6	
10'	14.4	5.8	
15'	6.4	8.6	
20'	3.6	11.6	
30'	1.6	17.4	
40'	0.9	23.2	

CCT MULTIPLIER TABLE

CCT (K) / COLOR	MULTIPLIER
2700K	1.04
3000K	1.00
4000K	0.78

Note: Multiplier can be used to calculate center beam candle power (CBCP), Lumens and footcandle (FC) values.

Horizontal Illuminance on Surface - Cambria 203 Flush Lens Hood - 3000K

Filename: 203-FL-8LED3010-12-BK.ies			
Test No.: P349420			
Distance	FC	Beam Diameter	
2'	1939.5	0.4	
4'	484.9	0.8	
6'	215.5	1.2	
8'	121.2	1.6	
10'	77.6	2	
15'	34.5	3	
20'	19.4	4.2	
30'	8.6	6.2	
40'	4.8	8.4	

Filename: 203-FL-8LED3025-12-BK.ies			
Test No.: P349500			
Distance	FC	Beam Diameter	
2'	863.4	0.6	
4'	215.9	1.2	
6'	95.9	1.8	
8'	54	2.4	
10'	34.5	3	
15'	15.3	4.6	
20'	8.6	6.2	
30'	3.8	9.2	
40'	2.2	12.4	

Filename: 203-FL-8LED3036-12-BK.ies			
Test No.: P349485			
Distance	FC	Beam Diameter	
2'	367.2	1	
4'	91.8	2.2	
6'	40.8	3.4	
8'	22.9	4.6	
10'	14.7	5.8	
15'	6.5	8.6	
20'	3.7	11.6	
30'	1.6	17.4	
40'	0.9	23.2	

TECHNICAL INFORMATION

1. Dimming is dependant on remote transformer compatibility with LED module. Please see compatibility for dimmer switch and transformer selection.
2. When using a magnetic dimmer switch there are two recommended LED compatible 120V magnetic dimming switches: Lutron Ariadni AVLV-600P and Lutron Diva DVLV-600P
3. IMPORTANT: When sizing transformer use 12 watts per LED fixture. Nominal power draw after start up is 8 watts. Any less or more voltage can cause premature failures.