

Market focused portfolio with products designed for broad applications

Value - competitive prices with a high level of features and customization

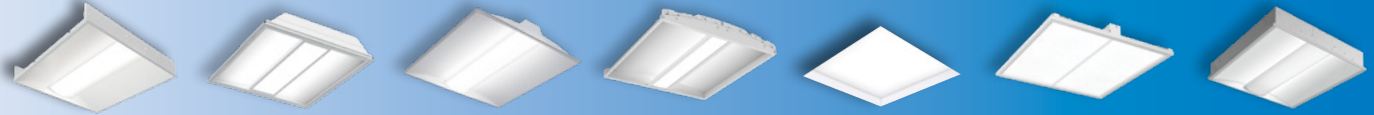
Performance - market leading performance with connected sensors options delivering value beyond lumens per watt



Whether lighting schools, offices, or hospitals on a budget, **Corelite's** commercial recessed products offer a complete family of innovative, affordable, and energy saving LED solutions for your next project.

Good **Better** **Best**

Click on products to learn more



		Class RX/ZX	Class D3X	Class R2X	Bridge	InDepth	Divide	Class R3/Z3
APPLICABILITY	Education	★★★	★★	★★★	★★	★★★	★★	★
	Office	★★★	★★★	★★★	★★★	★★★	★★★	★★★
	Healthcare	★	★★	★★★	★	★★	★★★	★★
	Retail	★★	★★	★★	★★	★★	★	★
FEATURES / PERFORMANCE	Sizes	1x4, 2x2, 2x4	1x4, 2x2, 2x4	1x4, 2x2, 2x4, Metric	1x4, 2x2, 2x4, Metric	1x4, 2x2, 2x4	1x4, 2x2, 2x4	1x4, 2x2, 2x4, Metric
	lm/W (Max)	145	139	134	118	127	137	141
	Lumens (Max)	7600	7800	8000	7300	9000	7500	7200
	Life (@60K)	L94	L93	L87	L80	L84	L87	L87
	Lens	Round (R), Flat (Z) Frost - Smooth	Frost - Smooth, Perf Inlays	Round (R), Frost - Smooth	Acrylic (Wavestream), Perf Inlays	1", 2" Cube Regress 1", 2", 3" Cube Drop 2" Curve Regress & Drop	Acrylic (Wavestream), Specular, Diffuse	Round (R), Flat (Z) Frost - Ribbed, Perf Inlays
	Emergency	Integrated	Integrated	Integrated	Integrated	Integrated, Indicator is Remote	Integrated	Integrated
	CRI	80+ / 90	80+ / 90	80+ / 90	80+ / 90	80+	80+ / 90	80+ / 90
	Sensor Location	Integrated	Integrated	Tile Mount	Integrated	Tile Mount	Integrated	Tile Mount
	DLC	Standard	Standard	Standard	Standard	Premium	Premium	Premium
	Air Return	Yes	None	Yes	Yes, concealed	Planned	None	Yes
VividTune™	Tunable White	Tunable White	No	No	No	No	No	
INTEGRATED CONTROLS	Stand Alone Daylight / Occupancy	✓	✓		✓		✓	
	WaveLinx Lite	✓	✓		✓		✓	
	WaveLinx	✓	✓		✓		✓	
	WaveLinx, No Sensor	✓	✓		✓	✓	✓	
	Enlighted	✓	✓	✓	✓	✓	✓	✓
	DLVP	✓	✓		✓	✓	✓	

Notes: 1. ★★★ = high applicability, ★★ = medium applicability, ★ = low applicability, blank = non-applicable