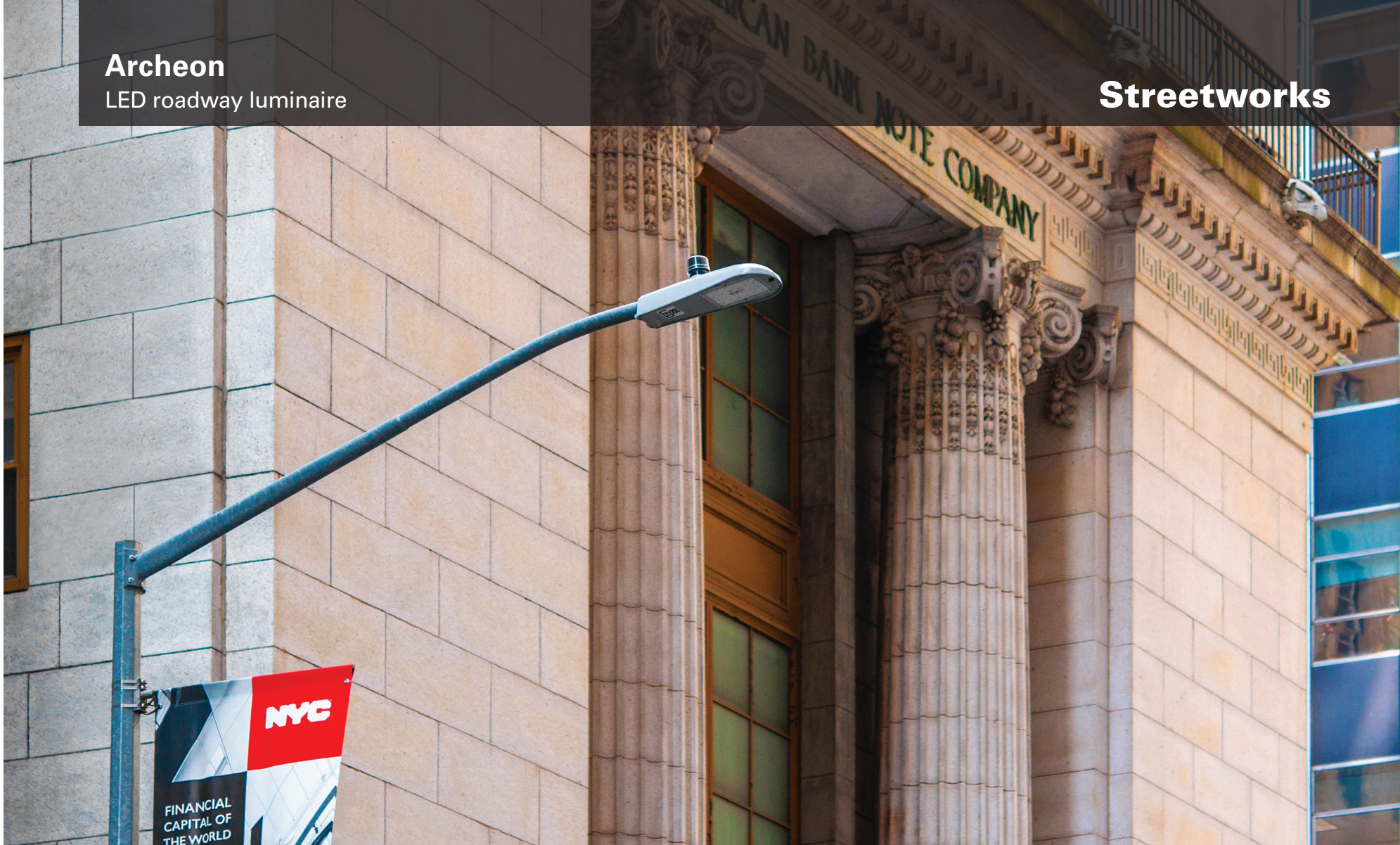


**Archeon**  
LED roadway luminaire

**Streetworks**



**EATON**

*Powering Business Worldwide*

## Discrete LED solution. Energy conscious illumination.

The Archeon™ LED roadway luminaire delivers all the performance benefits of the latest Eaton LED platforms and technologies with a modern, yet familiar cobrahead form factor. This discrete LED solution with the patented, high-efficiency AccuLED Optics™ system provides uniform and energy conscious illumination for municipal streets and highways. Our customer focused features include a single latch for tool-less entry to serviceable components, industry leading surge protection options, superior lumen maintenance and performance, all in an economical architectural design.

### Key features and benefits

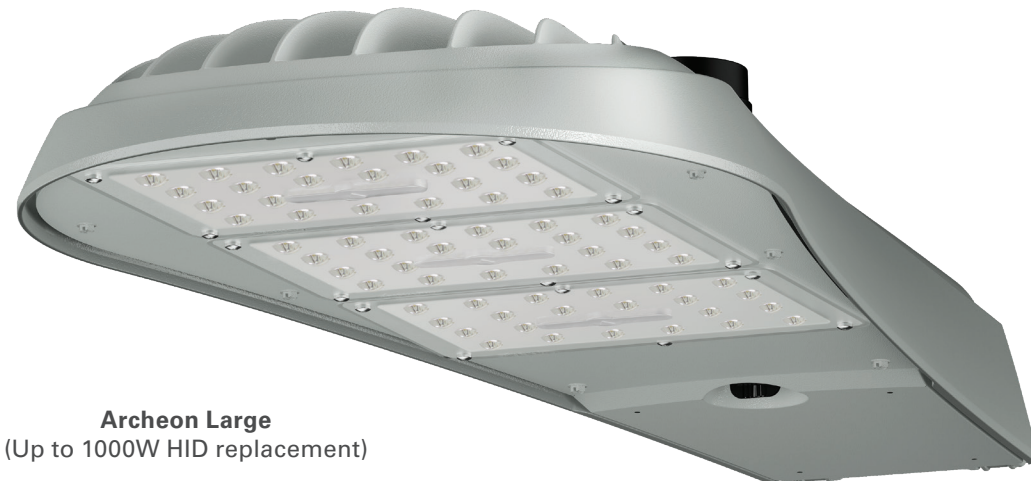
- High performance, discrete LED solution delivers over 145 lumens per watt
- Multiple optical distributions across the three luminaires that are precisely designed to shape the distribution, maximizing efficiency and fixture spacing
- Multiple lumen packages ranging from 2,500 - 33,000 delivered lumens
- 4000K CCT standard with minimum 70 CRI, optional 2700K CCT at 80 CRI, 3000K and 5000K CCT at 70 CRI
- Optional 3 or 7-PIN NEMA twistlock photocontrol receptacle (ANSI-C136.41) for control capability
- Tool-less access for ease of installation and maintenance



**Archeon Small**  
(Typical <200W HID replacement)



**Archeon Medium**  
(Up to 400W HID replacement)



**Archeon Large**  
(Up to 1000W HID replacement)



## LED roadway lighting. We've got this covered.

Eaton's Archeon family of LED roadway luminaires light the way to sustainable and economic solutions for a wide range of outdoor lighting applications.

### Superior, affordable performance

Whether on an urban street, a rural or residential road or a highway, the Archeon LED roadway luminaires get the job done. High performance, long life, low maintenance and low cost are critical factors for any roadway lighting application. The Archeon family is ideal for retrofit and new construction projects, and it can be tailored to meet your specific needs without compromising on important features.

### Long term reliability and maintenance

From local to major roadways, the Archeon luminaires are designed for easy install, superior performance, and long term energy and maintenance savings. Tool-less entry and quick disconnects allow for stress-free installation and maintenance. The optical assemblies are IP66 rated to protect and ensure continued performance from the LED light source. The heavy-duty die-cast aluminum housing is designed to operate in high ambient temperatures while still providing superior lumen maintenance over the life of the luminaire. Input operating voltage options include 120-277V 50/60Hz, 347V 60Hz and 480V 60Hz. The optional 10kV/10kA surge protector provides state of the art protection against voltage spikes, while the super TGIC polyester powder coat finish provides years of durability.

### Real world features

The Archeon family of luminaires is designed to meet the challenging demands of roadway applications. The luminaires are available with numerous surge protection and control options. Both 3- and 7-PIN NEMA twistlock receptacles are available to accommodate additional control. The luminaires are also designed for multiple mounting options including standard pole, optional arm, and offset adjustable arm mounting.



## LumenSafe. Integrated network security camera.

Eaton.com/LumenSafe

All-in-one lighting and surveillance solution.

**Lighting is everywhere. Why shouldn't it do more?** Outdoor lighting provides the perfect platform for safer, more connected communities. Now, besides just keeping key areas well-lit, lighting can help you keep an eye on things. LumenSafe is an all-in-one solution combining LED lighting with a high-definition camera.

### LumenSafe features and benefits

- One-trip installation
- Flexible software integration
- Streamlined design
- State-of-the-art security features
- Available in several LED luminaire packages
- Flexible backhaul options



LumenSafe  
reduces project  
installation time by  
up to  
**30%**

**Coming Soon**  
(Available with Archeon Large only)

## Safe communities start here



**LED  
light fixtures**

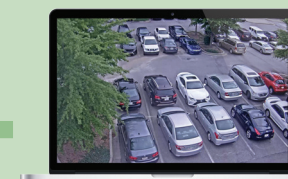


**Integrated  
video camera**

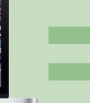


**Flexible  
backhaul options**

(Cellular, Wi-Fi, Ethernet)



**Software  
services**

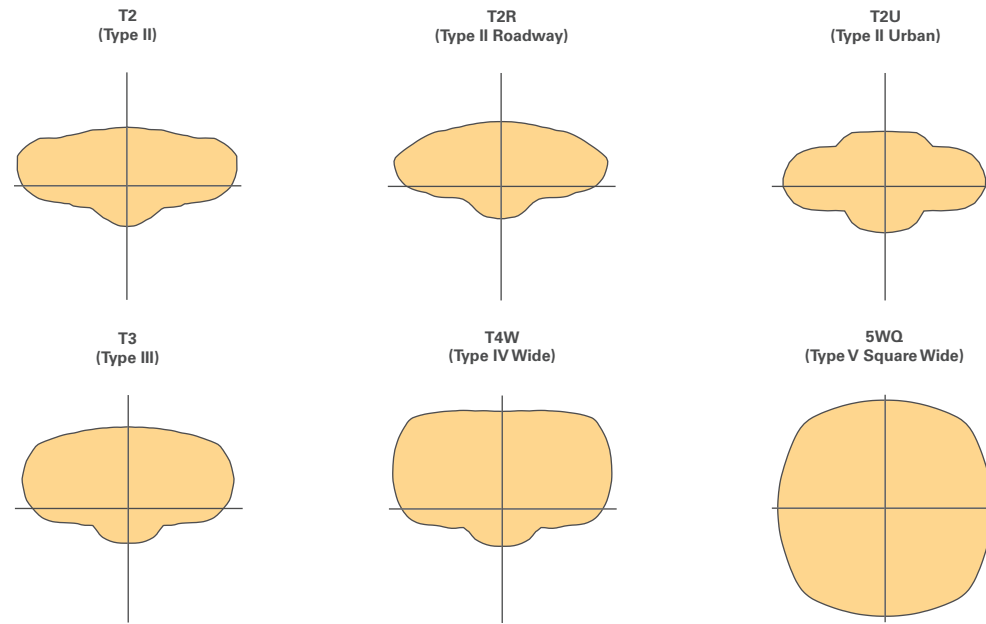


**LumenSafe**  
simplified  
integration

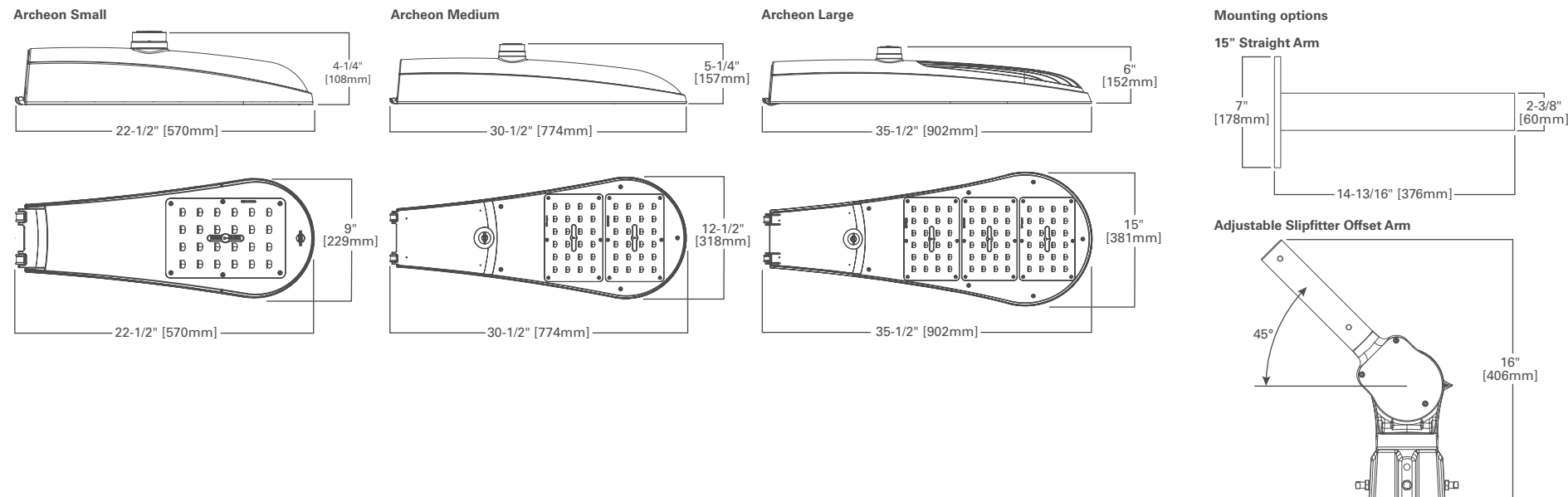
# Performance and scalability

## Optical performance redefined.

Choice of six patented, high-efficiency AccuLED Optics. Available in Type II, III, IV wide and V square wide the optics are precisely designed to shape the distribution maximizing efficiency and application spacing. Offered standard in 4000K (+/- 275K) CCT and minimum 70 CRI. Optional 2700K (80 CRI), 3000K (70 CRI), 5000K (70 CRI) CCT are available. For the ultimate level of spill light control, an optional house side shield accessory is available and can be field or factory installed. The house side shield is designed to seamlessly integrate with the T2R, T3, and T4W optics. Optics are IP66 enclosure rated.



# Dimensions



# Technical specifications

## Performance

**Distributions:** Type II, III, IV, V

## Lumens

Archeon Small: 2,500 - 13,000

Archeon Medium: 5,000 - 21,000

Archeon Large: 11,000 - 33,000

**CCT/CRI:** 4000K / 70 CRI, 3000K / 70 CRI, 5000K / 70 CRI, 2700K 80 CRI

**Controls:** 0-10V, occupancy sensor, LumaWatt Pro, WaveLinx, 3-PIN or 7-PIN NEMA twistlock photocontrol receptacle

## Energy data

**Power factor:** >0.9

**Total harmonic distortion:** <20%

**Minimum temperature:** -40°C

**Ambient temperature rating:** 40°C / 50°C

**Operation:** 120-277V 50/60Hz, Optional 347V and 480V

## Additional information

**Warranty:** 5 year (optional 10 year)

**Vibration tested:** 3G

**UL/cUL listed:** Wet location

**IP66 rated:** Yes (optics)

**ISO 9001:** Certified

**RoHS:** Compliant

## Approximate net weight:

**Archeon Small:** 12 lbs. (5.45 kgs.)

**Archeon Medium:** 18 lbs. (8.16 kgs.)

**Archeon Large:** 27 lbs. (12.2 kgs.)

## Effective projected area (EPA) square feet:

**Archeon Small:** 0.50

**Archeon Medium:** 0.71

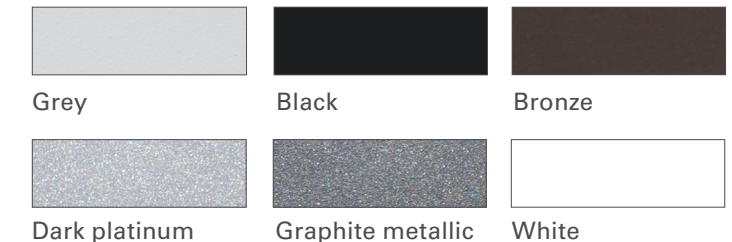
**Archeon Large:** 0.86



# Finish selection

Five-stage super TGIC paint resists extreme weather conditions, while providing optimal color and gloss retention.

Eaton utilizes premium ultra-weatherable TGIC based polyester powder coatings that are specifically formulated to withstand extended outdoor exposure. The powders are formulated exclusively for Eaton to serve functionally as well as decorative. Good film appearance combined with excellent mechanical and exterior exposure qualities display greater than twice as much gloss retention. Finish is compliant with ASTM B117 3000hr salt spray standard. RAL and custom color finishes available.



**NOTE:** Colors and textures have been matched as close as possible. Consult your lighting representative at Eaton for more information, or visit [eaton.com/lighting](http://eaton.com/lighting) to find the most up to date information.

Product specifications subject to change without notice. Visit [eaton.com/lighting](http://eaton.com/lighting) to find the most up to date information.

### **Lighting Product Lines**

Ametrix  
AtLite  
Corelite  
Ephesus  
Fail-Safe  
Halo  
Halo Commercial  
Invue  
io  
Iris  
Lumark  
Lumière  
McGraw-Edison  
Metalux  
MWS  
Neo-Ray  
Portfolio  
RSA  
Shaper  
Streetworks  
Sure-Lites

### **Controls Product Lines**

Fifth Light Technology  
Greengate  
iLight (International Only)  
iLumin  
Zero 88

### **Connected Lighting Systems**

Distributed Low-Voltage Power  
HALO Home  
iLumin Plus  
LumaWatt Pro  
WaveLinx



**Eaton**  
1121 Highway 74 South  
Peachtree City, GA 30269  
P: 770-486-4800  
[www.eaton.com/lighting](http://www.eaton.com/lighting)

**Canada Sales**  
5925 McLaughlin Road  
Mississauga, Ontario L5R 1B8  
P: 905-501-3000  
F: 905-501-3172

© 2018 Eaton  
All Rights Reserved  
Printed in USA  
Publication No. BR521006EN  
December 2018

Eaton is a registered trademark.

All other trademarks are property of their respective owners.

Product availability, specifications, and compliances are subject to change without notice.