

The burning of herbs has been a ritual to various cultures for years. The burning of sage, specifically, is one of the oldest and purist methods of cleansing a person, group of person, or space. This practice of wellness and healing is where my concept derived from, as I aimed to create a space for guests to restore, relax and be reunited with their roots. The House of Sage is a luxurious wellness resort located on the mountain coast of Bali, Indonesia. Through simplistic architecture, the diffusion of the indoors and outdoors through both natural and artificial light, the use of raw materials, and a neutral color palette, the resort provides an environment that allows guests to focus on their mental, physical and emotional health. In addition to promoting personal wellness, the diffusion of artificial and natural light brings the guests together in both a social and environmental way.



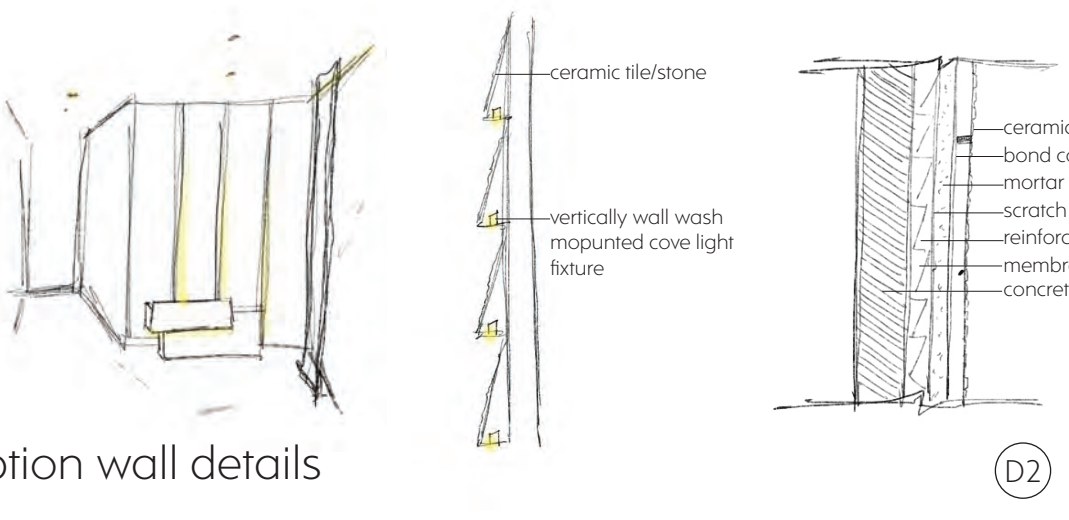
facade

The above perspectives represent the facade of the resort. The lighting design applied to the facade is crucial, as this is the first point of experience for the guests. Natural daylight is emphasized through the space between each of the four architecture overhangs. Although the facade provides protection from weather, it does not entirely close out the natural daylight which allows personal connection to the environment. Another lighting feature includes a backlit, down lit and uplit live green wall. Not only does this wall promote a sense of nature, as the guest can visually see greenery emphasized by artificial light, but the ivy naturally filters airborne toxins in the air. The last and most prominent lighting feature in the facade is the water wall which is down and uplit. This water feature creates an experience for the guests as they walk "through" the feature upon entering the lobby. Not only does this create a direct connection to the environment but it brings the guests together to connect through experience.



# the house of sage

lighting map



reception wall details

lobby reception wall

The top below render is a view for the lobby reception. The lighting design applied is crucial to the lobby space as it primarily indicates the connection between the resort employees and guests. This desk is emphasized through a lighting feature that includes a staggered stone wall with cover lighting recessed vertically on each divot. The lighting is also 3000K CCT to continue the warm atmosphere throughout. The lobby is also lined in over sixty linear feet of warm cove lighting that downlights the space creating a comfortable atmosphere.

lighting legend

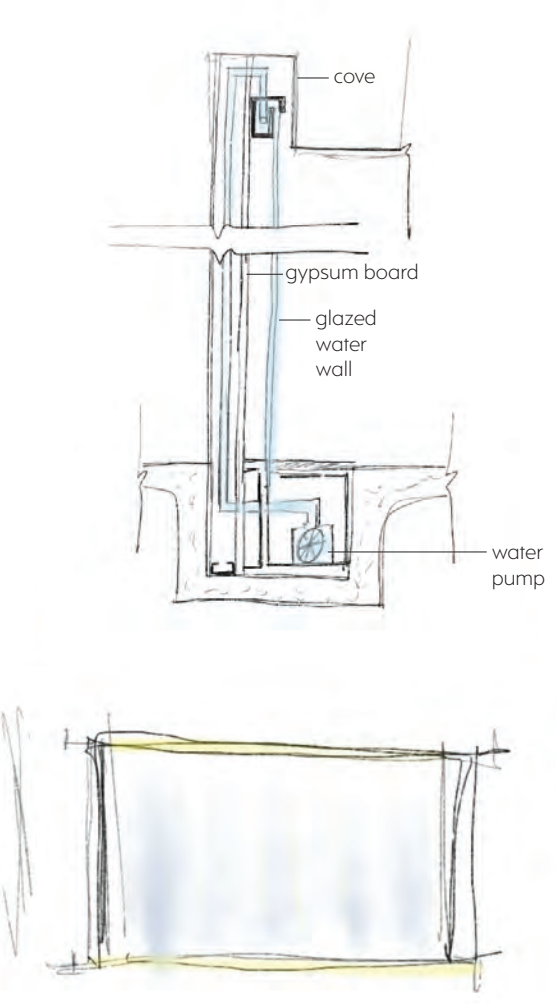
SYMBOL	CODE	DESCRIPTION
[Symbol]	U11	UNDERCOVE LIGHTING RECESSED/RECESSED
[Symbol]	U12	UNDERCOVE LIGHTING RECESSED/ARTIFICIAL
[Symbol]	U13	IF RECESSED DOWN LIGHTING
[Symbol]	U14	IF RECESSED DOWN LIGHTING
[Symbol]	U15	IF RECESSED DOWN LIGHTING
[Symbol]	U16	IF RECESSED DOWN LIGHTING
[Symbol]	U17	IF RECESSED DOWN LIGHTING
[Symbol]	U18	IF RECESSED DOWN LIGHTING
[Symbol]	U19	IF RECESSED DOWN LIGHTING
[Symbol]	U20	IF RECESSED DOWN LIGHTING

achieved room brightness & lpd

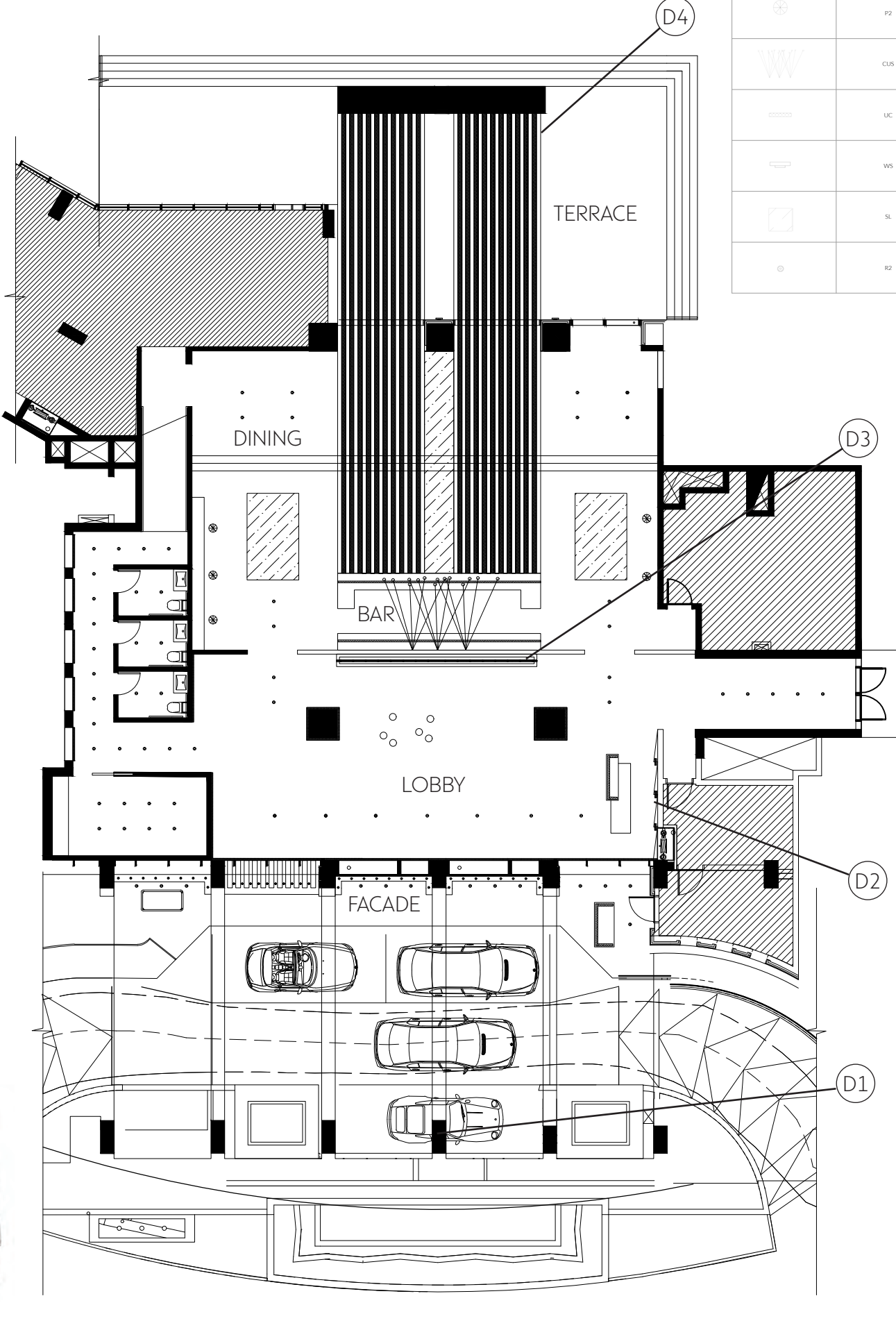
AREA	ROOM BRIGHTNESS	LIGHT POWER DENSITY
ENCLOSURE	NA	0.07 W/LM <sup>2</sup>
LOBBY	400FC	0.2 W/LM <sup>2</sup>
RECEPTION/LOBBY	400FC	0.2 W/LM <sup>2</sup>
TERACE	350FC	0.1 W/LM <sup>2</sup>

lobby water wall

The left perspectives represent the water wall feature of the resort lobby. The lighting design applied to the lobby is also crucial, as this is the first interior destination for the guests. There is importance in continuing the connection through lighting from the facade to the lobby. This was done by creating a water wall as the focal point upon entry. Although it is not a water wall to walk through like the entry, it is floor to ceiling and is backlit and down and up lit. This directly connects the guests to the outdoor environment even in the interior space.



water wall details



reflected ceiling plan

lighting schedule

SYMBOL	CODE	DESCRIPTION	MANUFACTURE RANGE	LAMP	MOUNTING	REMARKS	LAYERS
[Symbol]	U11	UNDERCOVE LIGHTING RECESSED/RECESSED	COOPER INDUSTRIES	LED	HORIZONTAL WALL MOUNT	0.7' x 4.4' x 3000K CCT DIMMABLE	AMBIENT
[Symbol]	U12	UNDERCOVE LIGHTING RECESSED/ARTIFICIAL	COOPER INDUSTRIES	LED	VERTICAL WALL MOUNT	0.7' x 4.4' x 3000K CCT DIMMABLE	AMBIENT
[Symbol]	U13	IF RECESSED DOWN LIGHTING	COOPER INDUSTRIES	LED	CEILING MOUNT	3000K CCT 4' x 4' DIMMABLE	AMBIENT
[Symbol]	U14	IF RECESSED DOWN LIGHTING	COOPER INDUSTRIES	LED	CEILING MOUNT	3000K CCT 4' x 4' DIMMABLE	AMBIENT
[Symbol]	U15	IF RECESSED DOWN LIGHTING	COOPER INDUSTRIES	LED	CEILING MOUNT	3000K CCT 4' x 4' DIMMABLE	AMBIENT
[Symbol]	U16	IF RECESSED DOWN LIGHTING	COOPER INDUSTRIES	LED	CEILING MOUNT	3000K CCT 4' x 4' DIMMABLE	AMBIENT
[Symbol]	U17	IF RECESSED DOWN LIGHTING	COOPER INDUSTRIES	LED	CEILING MOUNT	3000K CCT 4' x 4' DIMMABLE	AMBIENT
[Symbol]	U18	IF RECESSED DOWN LIGHTING	COOPER INDUSTRIES	LED	CEILING MOUNT	3000K CCT 4' x 4' DIMMABLE	AMBIENT
[Symbol]	U19	IF RECESSED DOWN LIGHTING	COOPER INDUSTRIES	LED	CEILING MOUNT	3000K CCT 4' x 4' DIMMABLE	AMBIENT
[Symbol]	U20	IF RECESSED DOWN LIGHTING	COOPER INDUSTRIES	LED	CEILING MOUNT	3000K CCT 4' x 4' DIMMABLE	AMBIENT



**terrace wood slat overhang**

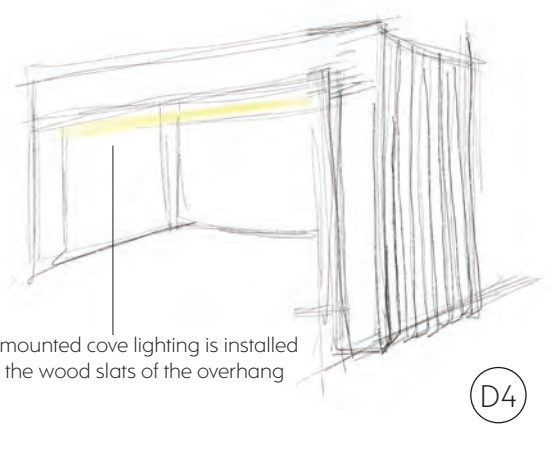
The above and below perspectives represent the terrace of the resort. The lighting design applied to the terrace is crucial as it is the diffusion of the outdoors and indoors of the resort. In order to create a space that the guest could not necessarily tell what was the outdoors and what was the indoors, an architectural slat wood overhang was designed to run up over and through the terrace into the dining lounge and bar. This architectural overhang allows the natural daylight to be let into the space along with wall wash mounted cove lights installed to continue this lighting vibe into the night time. This space also includes a couple outdoor wall sconces which diffuse warm light on the terrace.

**terrace live green wall**

It was important to continue the environmental connection through the terrace as well. To emphasize this, a backlit and down and up lit live wall was included on the far wall. This live green wall mimics the other two that are installed in the

**dining lounge & bar**

The perspective below represents the dining lounge & bar of the resort. The lighting design applied to the bar is crucial as it must provide both functional lighting and mood lighting to create a space for the guests to eat, drink and be social in a comfortable way. The bar includes both undercabinet lighting under the floating shelves and waterfall counter as well as a custom draped wire pendant chandelier.



conceptual images

