



Lobby/Retail Area

Reception area is illuminated by various lighting strategies; including decorative pendant lighting to emphasize retail areas and front desk, cove to enhance the architectural features and recessed downlight to create a uniform, warm environment.

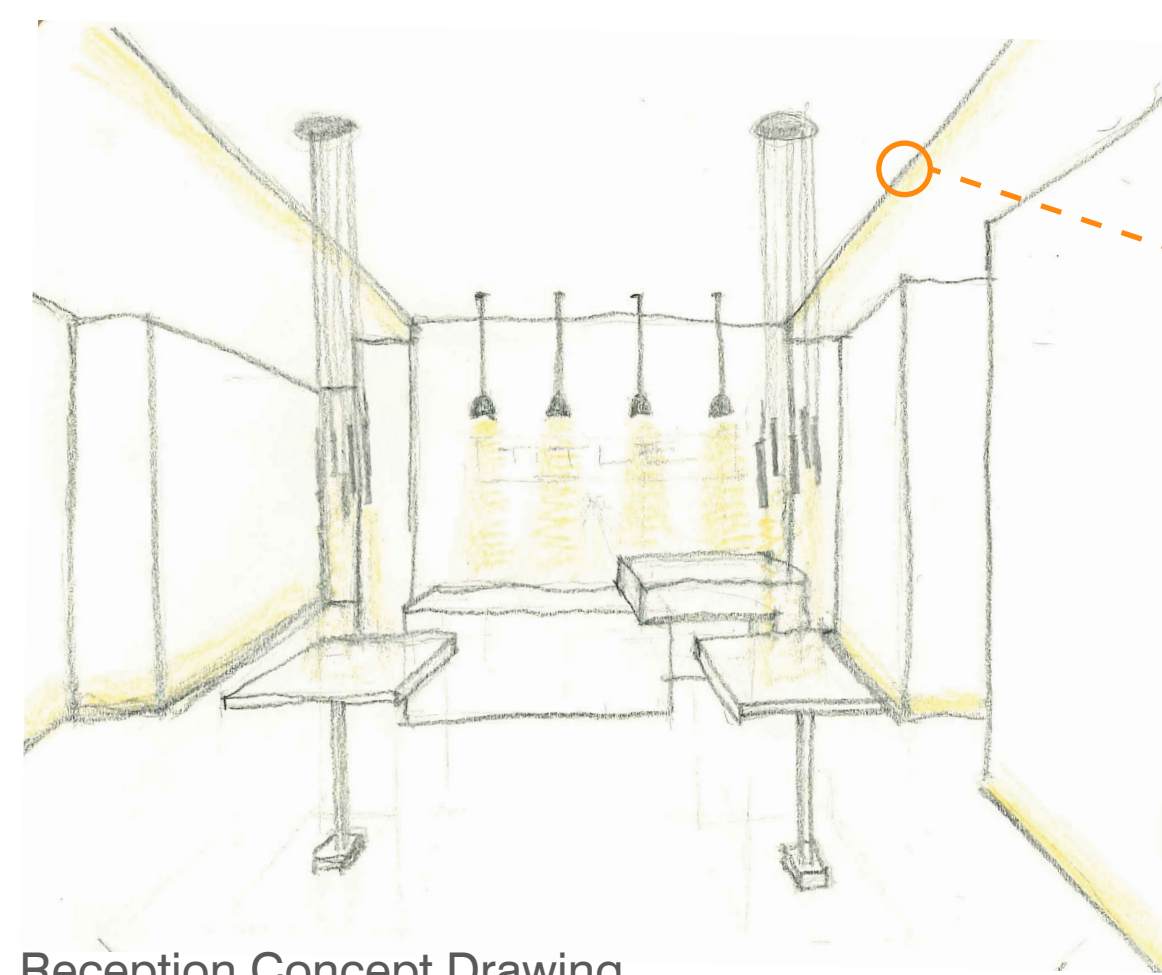
hidden

spa

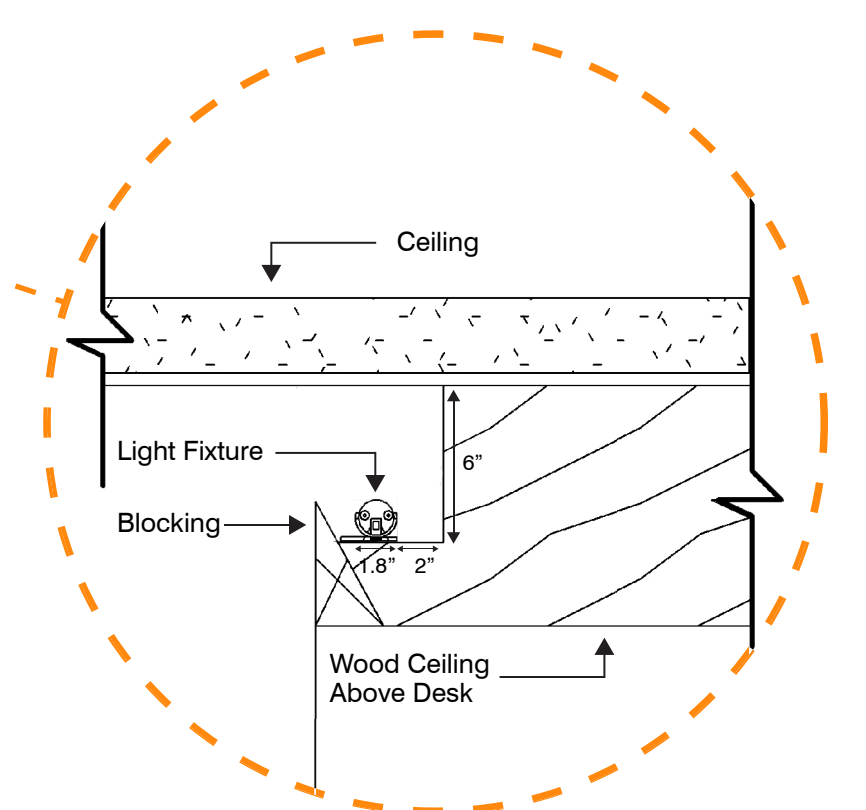
The urban spa presents itself as a warm and inviting space, that brings natural elements to the interior. The application of these materials is emphasized by hidden light, and this helps create different focal points in each room based on their function. The use of wood to create dropped ceilings throughout the spaces allows for the user to focus their attention in the function of the room,

while at the same time making it feel more comfortable and intimate. Since each individual space has a different purpose, they provide a unique atmosphere and user experience based on lighting, while still preserving the continuity of the design throughout the space with the repeated use of materials, concealed light, and interior elements.

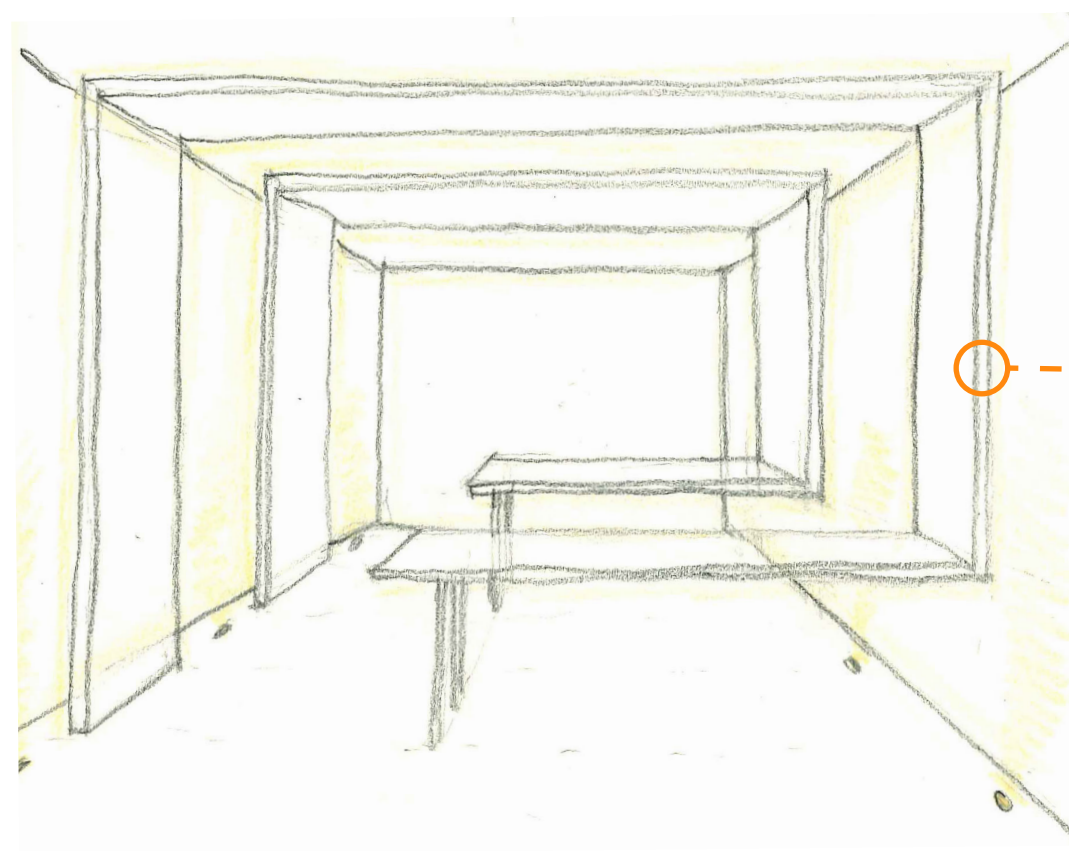
-  polished concrete
-  fieldstone veneer
-  beige marble
-  brown cantera
-  hardwood
-  stone tile



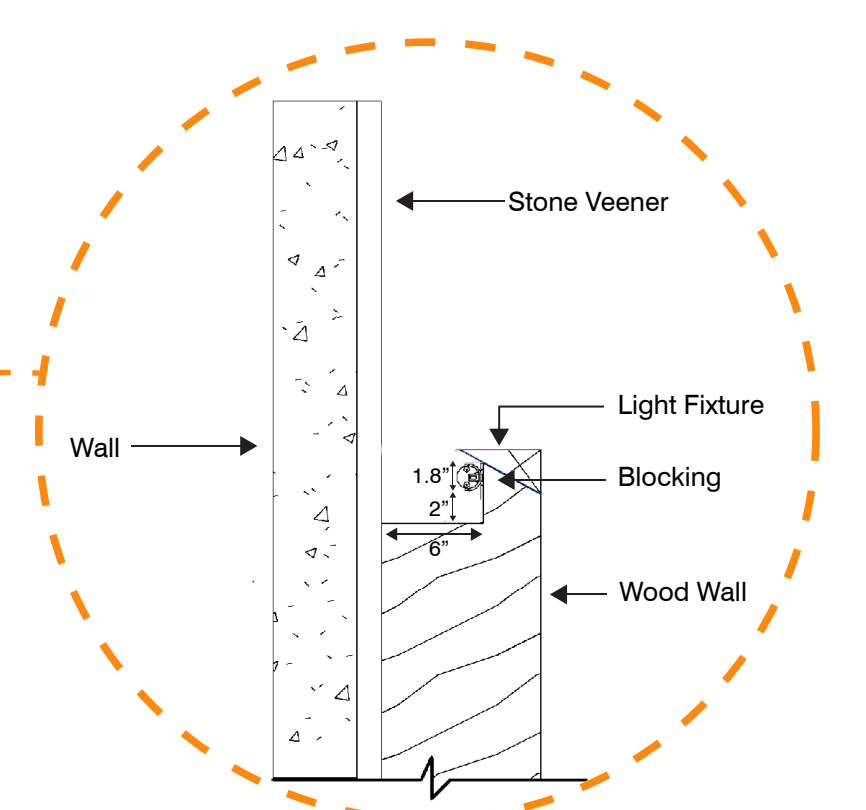
Reception Concept Drawing



(detail section)
Cove lighting in wood ceiling



Massage Room Concept Drawing



(top view)
Cove lighting in wood panels



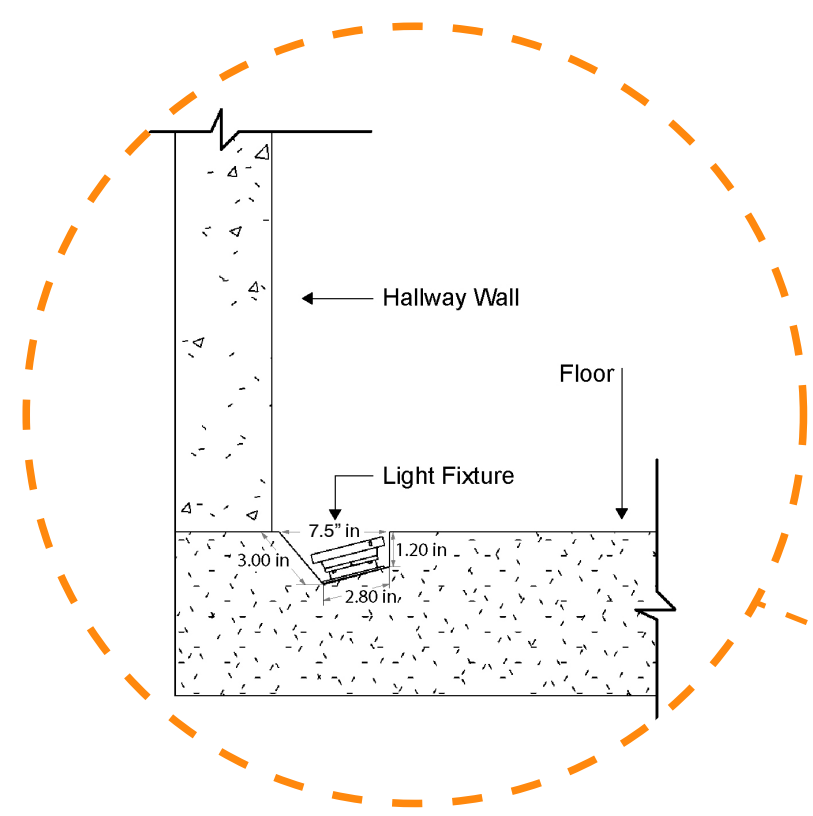
Massage Room

The massage rooms are dimly lit to promote a calm environment, creating a relaxing experience. The cove lighting illuminates enough to locate the important elements in the room.

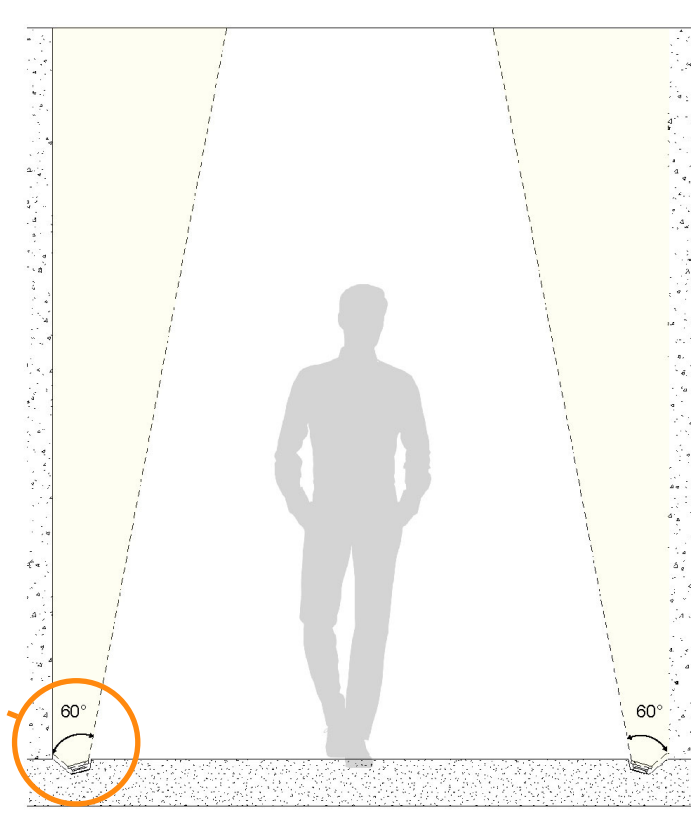


Waiting Room

The waiting room functions as a transition space for the spa visitors. This space shows lower light levels that promote an intimate environment, with decorative pendant light fixtures and an accent wall that invites you to sit and relax while waiting for your massage.

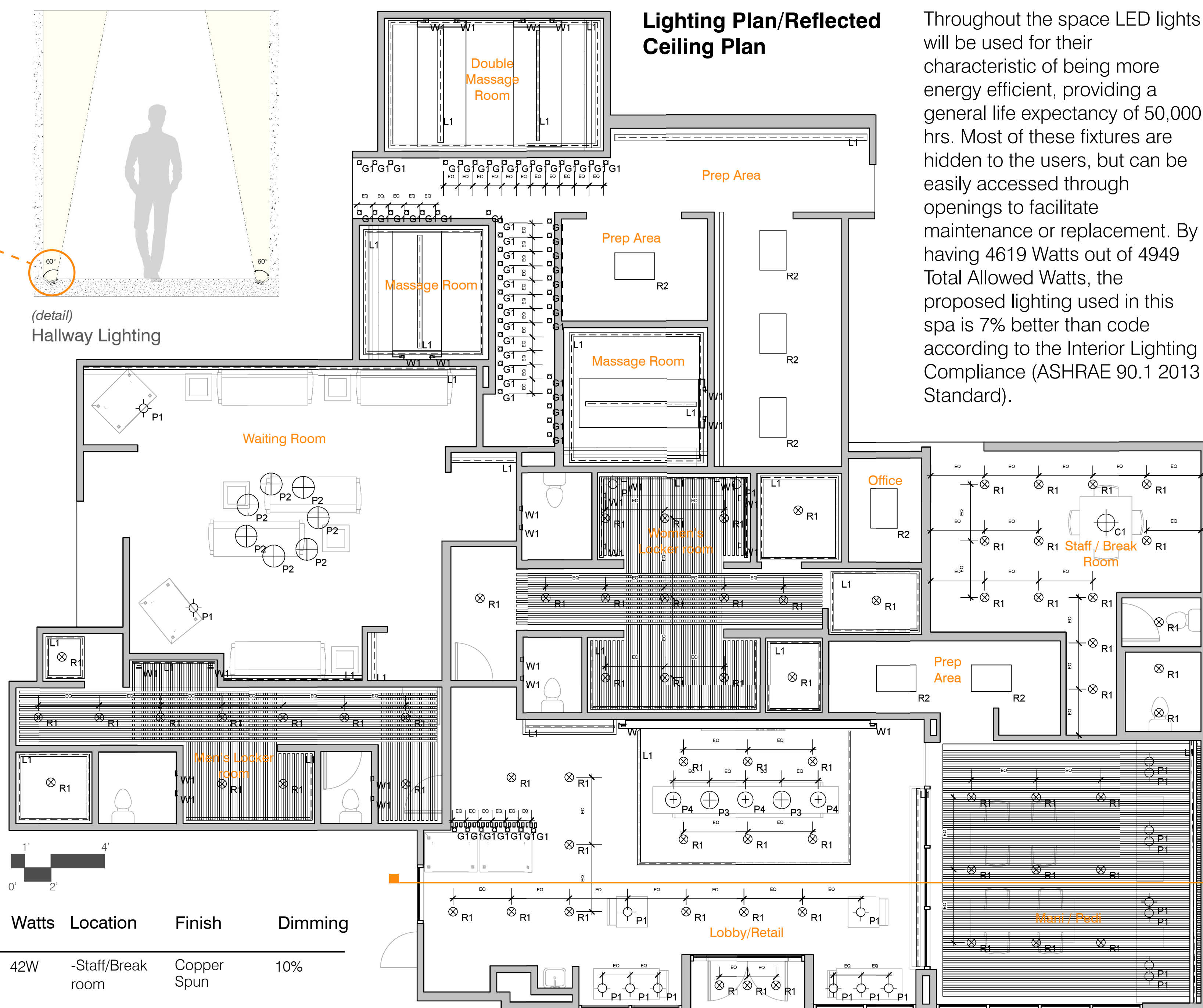


(section)
Wall grazing detail



(detail)
Hallway Lighting

Lighting Plan/Reflected Ceiling Plan



Throughout the space LED lights will be used for their characteristic of being more energy efficient, providing a general life expectancy of 50,000 hrs. Most of these fixtures are hidden to the users, but can be easily accessed through openings to facilitate maintenance or replacement. By having 4619 Watts out of 4949 Total Allowed Watts, the proposed lighting used in this spa is 7% better than code according to the Interior Lighting Compliance (ASHRAE 90.1 2013 Standard).

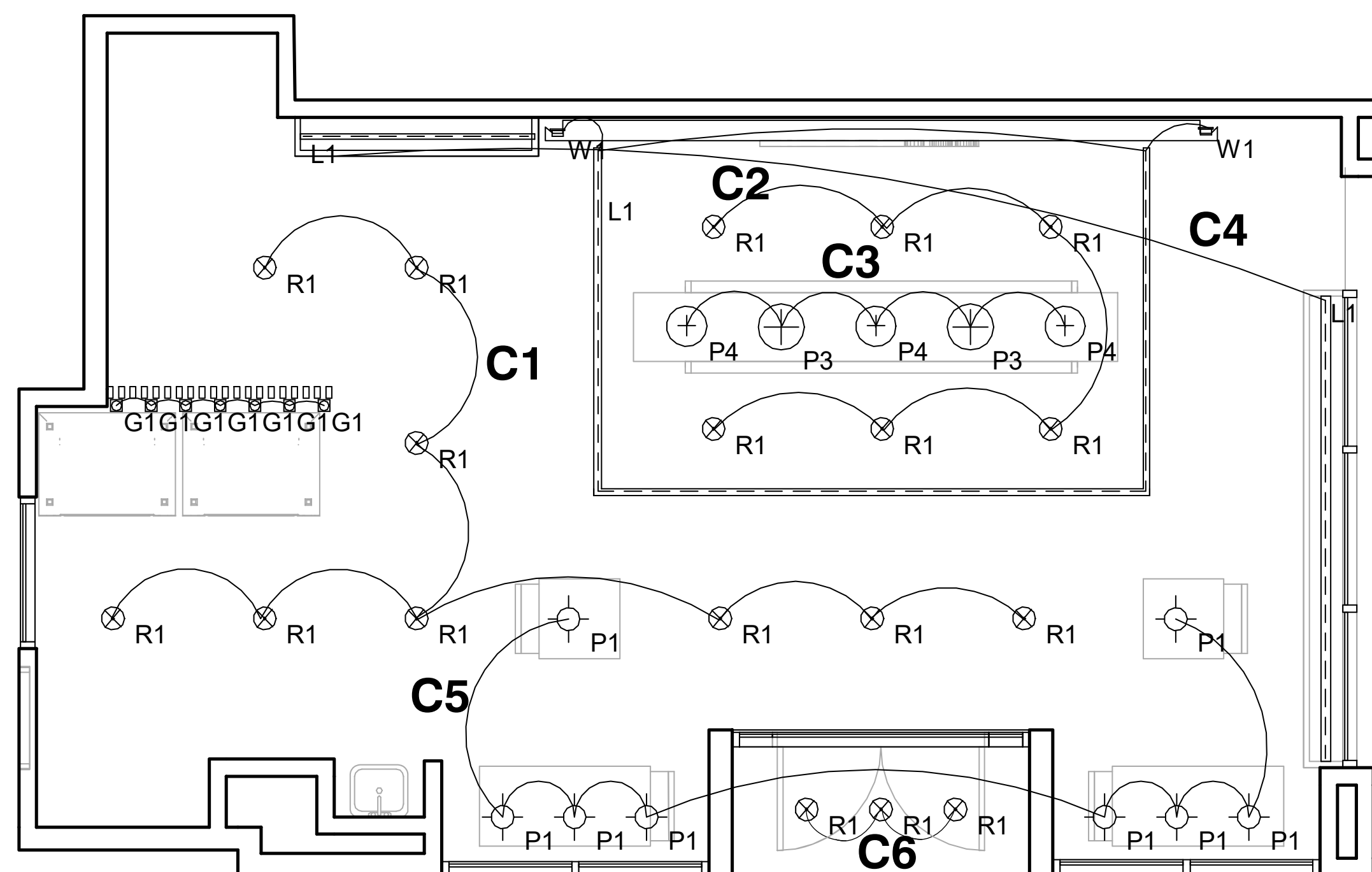
Lighting Legend

- Cappuccina Pendant
- In-ground uplight
- Linear light
- Pendant Pipe
- Flower Pendant
- Elliptical Pendant
- Circular Pendant
- Recessed downlight
- Recessed panel
- Linear light on wall

Lighting Schedule

Type	Description	Manufacturer/ Catalog#	Lamp/ Source	Watts	Location	Finish	Dimming
C1	Transparent methacrylate ceiling pendant	Eaton Sharper 1800 Dome L27	2700K LED CRI 90	42W	-Staff/Break room	Copper Spun	10%
R1	Recessed downlight LED luminaire	Eaton P406TAT MH4LED E4DCSR	LED 2700K CRI 90	15W	-Lobby/Retail -Locker rooms -Staff/Break room	Galvanized steel plaster frame	n/a
R2	2' x 4' General LED Recessed Panel	Eaton Metalux 24FP4740C	LED 4000K CRI 80	41.4W	-Laundry -Prep/Workstation -Small office	Low profile white trims	n/a
G1	Recessed uplight LED inground	Eaton MONACO 3002A	LED 3000K CRI 85	18W	-Hallway -Lobby/Retail	Round Trim Natural Stainless Steel	to 15%
L1	Cove lighting fixture with integral driver	Eaton iO LED CoviO	LED 2700K CRI 90	5W	-Lobby/Retail -Locker rooms -Mani/Pedi -Waiting Area	Powder coated aluminum	to 1%
P1	Pipe Tube is a slender decorative, cylindrical luminaire	Intra Lighting Pipe Tube S	LED CRI 85/95 3000K	27W	-Lobby/Retail -Locker rooms	Aluminum, powder coated	ELV Dimmable control gear
P2	Transparent methacrylate ceiling pendant	LUCEPLAN Agave D49/17s	LED 2700K	20W	-Lobby/Retail	Transparent methacrylate	n/a
P3	Transparent methacrylate ceiling pendant	LUCEPLAN Agave D49/26s	LED 2700K	20W	-Lobby/Retail	Transparent methacrylate	n/a
P4	Transparent methacrylate ceiling pendant	LUCEPLAN Agave D49/70s	LED 2700K	20W	-Waiting Area	Transparent methacrylate	n/a

Control Plan

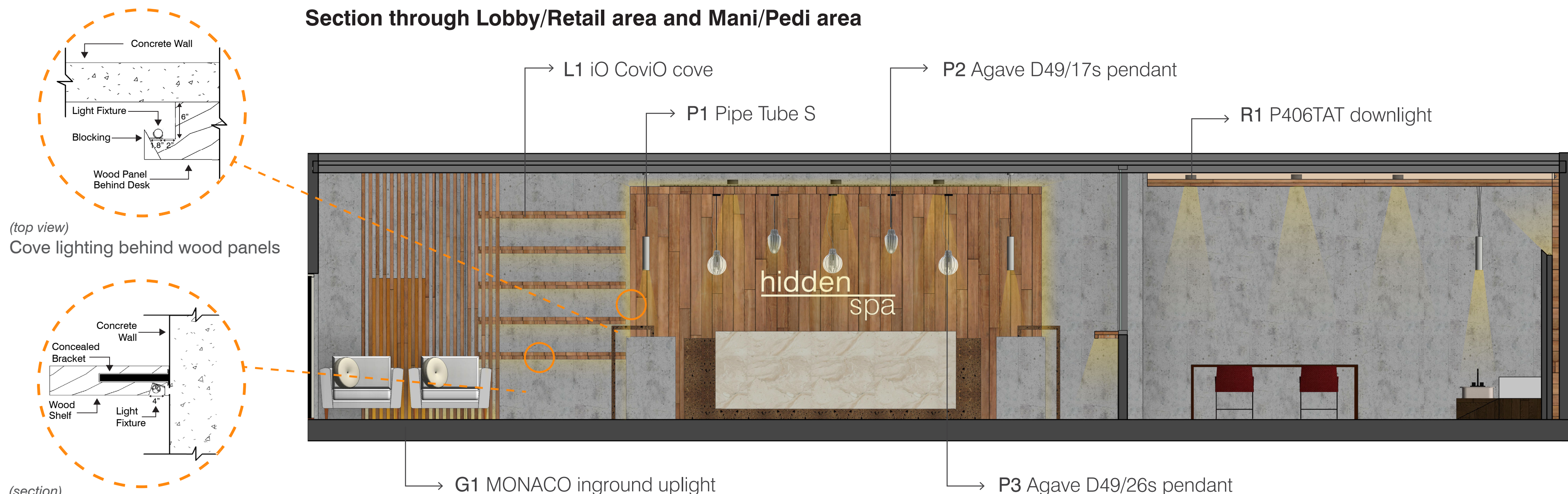


Lobby/Retail area

The control plan was designed to be able to adjust the light levels depending on the specific area that needs illumination. The individual fixture groups are managed under the same control to facilitate its use; with each control responding only to a specific fixture type.



Section through Lobby/Retail area and Mani/Pedi area



(top view)
Cove lighting behind wood panels

(section)
Cove lighting under wood shelves