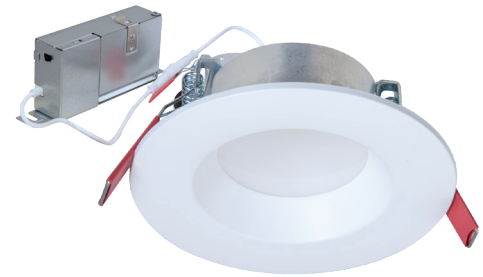


## LT Selectable Downlight

### CANLESS DOWNLIGHT

- 3, 4 and 6-inch LED downlights with remote driver/junction box
- Installs into drywall/suspended ceiling (no j-box or housing required)
- 3 field-selectable CCT: 2700K, 3000K, 3500K or 3000K, 4000K, 5000K; 90 CRI
- Dimmable down to 10% with select phase cut dimmers
- Insulated ceiling (IC) and non-IC rated; Deadfront



Catalog Number	Description	Finish	Replaces Up To	Selectable CCT	Voltage	Lumens	Watts	UPC	Energy Star ID
LT4069FS351EWHDMR-C	4" Module	White	60W INC	3000K-5000K	120V	600	7.8	80083263868	2389364
LT6089FS351EWHDMR-C	6" Module	White	100W INC	3000K-5000K	120V	600	8.5	80083263882	2389359

## Mounting Frame For Canless Downlights

### CANLESS DOWNLIGHT

- 4 and 6-inch new construction frames for round and square products
- Accepts fixtures including remodel housings and direct-mount downlights
- Use to reserve the ceiling location or install products that need bar hangers
- Provides routing guidance for the drywall contractor
- Compatible with all direct mount products



Catalog Number	Description	UPC
HL4RSMF	4" Round/Square Mounting Frame	080083876167
HL6RSMF	6" Round/Square Mounting Frame	080083876181

## FM Dimming Series

### FLUSHMOUNT

- Sizes 8", 11", 15"
- 3 colour Field selectable CCT: 3000K, 4000K and 5000K for 8" fixture
- 5 colour Field selectable CCT: 2700K, 3000K, 3500K, 4000K, 5000K for 11" & 15" fixture
- Retrofit ready to fit 5" and 6" incandescent housings
- Perfect for bedroom, closets, dormitories and more



Catalog Number	Description	Replaces Up To	Selectable CCT	Voltage	Lumens	Watts	UPC	Energy Star ID
FM89S1EWHR	8" LED Flushmount	100W INC	3500K-5000K	120V	950	10.5	080083256587	2399871
FM119S1EWHR	11" LED Flushmount	22W CFL	3500K-5000K	120V	1050	14.5	080083257706	2399874
FM159S1EWHR	15" LED Flushmount	2-100W INC	3500K-5000K	120V	1700	18	080083257720	2399877

# HALO<sup>®</sup> SURFACE MOUNTS

## Suitable for a variety of applications!

- Below the ceiling installation with no plates or clips required
- Designed for square, octagon, pancake or round junction boxes
- Ideal for closets, storage areas, attics and basements

## Quick and Easy Installation



## HALO SURFACE MOUNT DOWNLIGHT PRODUCT SELECTION GUIDE



		HLCE	HLS	BLD	JBD	FM	SMD	SLD
FEATURES/PERFORMANCE	Size / Shape	4", 6" Round	6", 9" Round	4", 6" Round	4" Round, Square	8", 11", 15"	4", 6", 12" Round, Square	4", 6" Round
	Trim & Lens	Curved	Curved	Curved	Interchangeable Square, Round or Full Lens Diffuser	Round Lens	Squared Edge Flat	Low-glare Prismatic Flat Lens
	Max Lumens (By size @ 3000K)	965	945, 1,330	800	715	950, 1,050, 1,700	740, 790, 2,240	635, 1,300
	Field SeleCCT Colour Temp Switch	Dedicated 3000K	Dedicated 3000K, 4000K	5 CCT 27/30/35 40/5000K	5 CCT 27/30/35 40/5000K	5 CCT 27/30/35 40/5000K	5 CCT 27/30/35 40/5000K	5 CCT 27/30/35 40/5000K
CONTROL	Dimming Phase Cut (LE/ TE)	10%	10%	5%	5%	10%	5%	5%
	Estimated Life Hours	35K	35K	50K	50K	50K	50K	50K
	Input Voltage	120V	120V	120V	120V	120V	120V, 120-277V	120V, 120-277V
HARDWARE	Decorative Overlays <sup>1</sup>				✓		✓	

<sup>1</sup> Matte Black, Tuscan Bronze, Satin Nickel, Paintable Matte White.

# HALO SURFACE MOUNTS

## SLD Downlight SURFACE MOUNT

- Ultra-low profile 4 and 6-inch surface mount LED downlight
- 5 field-selectable CCT: 2700K, 3000K, 3500K, 4000K, 5000K; 90 CRI
- Ceiling or wall mounting in standard and fire-rated compatible junction boxes
- SLD6 retrofits in 5-inch and 6-inch insulated ceiling (IC) and non-IC rated recessed housings
- Supply wire adapter with LED quick wiring connector included



Catalog Number	Description	Finish	Replaces Up To	Selectable CCT	Voltage	Lumens	Watts	UPC	Energy Star ID
SLDSL4069S1EMWR	4" Surface Downlight	White	65W INC	2700K-5000K	120V	600	9	080083153107	2395510
SLDSL6069S1EMWR	6" Surface Downlight	White	65W INC	2700K-5000K	120V	600	9	080083153121	2395511
SLD6129S1EMWR	6" Surface Downlight	White	75W INC	2700K-5000K	120V	1,200	15	080083153145	2373952

## SMD Downlight SURFACE MOUNT

- Low-profile 4, 6 and 12-inch surface mount LED downlight with wide distribution
- 5 field-selectable CCT: 2700K, 3000K, 3500K, 4000K, 5000K; 90 CRI
- Ceiling/Wall mounting in many 3½- and 4-inch square, octagon or round junction boxes
- Retrofits 4-inch and 6-inch insulated ceiling (IC) and non-IC rated recessed housings
- Supply wire adapter with LED quick wiring connector included
- Dimmable to 5% (120V dimmers); 90 CRI



Catalog Number	Description	Finish	Replaces Up To	Selectable CCT	Voltage	Lumens	Watts	UPC	Energy Star ID
SMD4R69SWH-C	4" RD Surface Mount	White	75W INC	2700K-5000K	120V	700	9.5	080083150045	2365919
SMD6R69SWH-C	6" RD Surface Mount	White	75W INC	2700K-5000K	120V	800	9	080083150083	2395508
SMD12R209SWHE	12" Surface Mount	White	150W INC	2700K-5000K	120V	2,232	27	080083138005	2388938
SMD14R209SWHE	14" Surface Mount	White	150W INC	2700K-5000K	120V	2,014	26	080083138401	2388940

## BLD Downlight SURFACE MOUNT

- 4 and 6-inch low-profile surface mount LED downlight with wide distribution
- 5 field-selectable CCT: 2700K, 3000K, 3500K, 4000K, 5000K; 90 CRI
- Installs in most 3½-inch and 4-inch square, octagon or round junction and pancake boxes
- Retrofits in 4, 5 and 6-inch insulated ceiling (IC) and non-IC rated recessed housings
- Supply wire adapter with LED quick wiring connector included



Catalog Number	Description	Finish	Replaces Up To	Selectable CCT	Voltage	Lumens	Watts	UPC	Energy Star ID
BLD4089SWHR-C	4" RD Surface, Direct Mount	White	65W INC	2700K-5000K	120V	802	10	080083867172	2362341
BLD6089SWHR-C	6" RD Surface, Direct Mount	White	65W INC	2700K-5000K	120V	812	10	080083867196	2362343

# HALO SURFACE MOUNTS

## JBD Slim Series SURFACE MOUNT DOWNLIGHT

- Low profile surface mount downlight with smooth flat lens
- Ceiling or wall mounting in compatible 4" junction boxes
- Interchangeable round, square, and full-lensed designer trims in multiple finishes
- 5 colour field-selectable in 27/30/35/40/5000K
- LED Downlight, supply wire adapter, quick wiring connector and mounting hardware included
- 5% Dimming (Phase Cut), 50,000 hrs, 90+ CRI



Catalog Number	Description	Finish	Replaces Up To	Selectable CCT	Voltage	Lumens	Watts	UPC	Energy Star ID
JBD4079FS1EWH	4" Light w/ Matte White Trim	White	60W	2700K-5000K	120V	715	10	080083283514	2567962

### Accessories (optional)

Catalog Number	Description	Finish	UPC
JBD4TRMMW	4" Round Trim	Matte White	080083283538
JBD4TRMMB	4" Round Trim	Matte Black	080083283590
JBD4TRMSN	4" Round Trim	Satin Nickel	080083283552
JBD4TRMTBZ	4" Round Trim	Tuscan Bronze	080083283576
JBD4STRMMW	4" Square Trim	Matte White	080083285679
JBD4STRMMB	4" Square Trim	Matte Black	080083285730
JBD4STRMSN	4" Square Trim	Satin Nickel	080083285693
JBD4STRMTBZ	4" Square Trim	Tuscan Bronze	080083285716
JBD4DIFF	4" Full Lens Diffuser	Diffuser	080083283613



## HLS Series SURFACE MOUNT

- 4, 6 and 9-inch surface mount LED disc lights
- Below the ceiling installation, no clips or plates needed
- Installs in most 3½-inch and 4-inch ceiling junction and pancake boxes
- 120V input, phase dimming down to 10% , Wet location rated
- Motion sensor option available



Catalog Number	Description	Finish	Replaces Up To	CCT	Voltage	Lumens	Watts	UPC	Energy Star ID
HLS4079301EWH-6BP	4" RD Surface Mount LED	White	65W INC	3000K	120V	753	13	080083256662	2401097
HLS6099301EWH-6BP	4" RD Surface Mount LED	White	100W INC	3000K	120V	925	16	080083256785	2401103
HLS6099401EWH-6BP	4" RD Surface Mount LED	White	100W INC	4000K	120V	1048	16	080083256808	2401102
HLS9129301EWH	9" RD Surface Mount LED	White	100W INC	3000K	120V	1285	17	080083256907	2401113
HLS9129401EWH	9" RD Surface Mount LED	White	100W INC	4000K	120V	1353	17	080083256921	2401112
HLSMS9129301EWH	9" RD Surface Mount LED	White	100W INC	3000K	120V	1285	17	080083256969	2401120