



STOCK PRODUCT GUIDE

Lighting & Controls

HALO | HALO COMMERCIAL | METALUX | ARCHITECTURAL | WAVELINX | GREENGATE | LUMARK | HALO OUTDOOR



RESIDENTIAL | COMMERCIAL | INDUSTRIAL

VISIT OUR **CANADIAN MARKETPRO WEBSITE**

Your one-stop shop for tools and resources designed to
help grow your business

- ✓ Product Guide
- ✓ E-Commerce Tools
- ✓ Find Utility Rebates
- ✓ Sample Before You Buy
- ✓ Marketing & Training



MARKETPRO
Stock Lighting Solutions

READILY-AVAILABLE SOLUTIONS FROM OUR TRUSTED BRANDS

The MarketPro program provides our customers with top selling lighting and controls products from industry-preferred brands for their trusted performance, reliability and quality. These products are in-stock and ready to ship to meet your project needs.



In-Stock

Our essential products are in stock and readily-available to ship



Top Brands

Trusted products from HALO, Metalux, Greengate, Sure-Lites and Lumark



Proven Best Sellers

Contractor preferred top selling lighting and controls products



Sample Before You Buy

Try new products risk free



Innovation

State-of-the-art product innovation, direct mount installation, selectable technology and integrated controls



Utility Incentives

Products qualify for ENERGY STAR® and DLC®, saving money and adding value



Expanded Selection

Customizable lighting products available through our Rapid Response and Quick Ship programs



Training & Education

Online and instructor-led classes to expand your lighting and controls knowledge

Visit the MarketPro Canada website to download the product guide



[COOPERLIGHTING.COM/MARKETPRO/CANADA](https://cooperlighting.com/marketpro/canada)

OUR BRANDS AND THE MARKETS WE SERVE



RESIDENTIAL

Residential lighting fixtures for single and multi-family construction and remodel projects.



COMMERCIAL

Lighting and controls solutions for healthcare, education, hospitality, retail and office.



INDUSTRIAL

Lighting and controls solutions for warehouses, distribution centers and logistic facilities.



OUTDOOR

Lighting and controls solutions for warehouses, distribution centers and logistic facilities.

We deliver a range of innovative and reliable indoor and outdoor lighting and controls product solutions specifically designed to maximize performance, energy efficiency and cost savings.

- ▶ **8 HALO**
Recessed & Surface Downlights
- ▶ **24 HALO COMMERCIAL**
Commercial Recessed Downlights
- ▶ **27 METALUX**
Ambient Commercial & Industrial
- ▶ **38 ARCHITECTURAL**
Commercial Lighting
- ▶ **41 WAVELINX LITE**
Lighting Control
- ▶ **44 GREENGATE**
Sensors & Switch Controls
- ▶ **48 LUMARK & LUMARK AP**
Outdoor Commercial & Industrial
- ▶ **54 HALO OUTDOOR**
Outdoor Commercial & Residential

SELECTABLE TECHNOLOGY

Multiple Light Choices, One Fixture.

Field-Selectable technology empowers you to take control. Go selectable to choose your way, every time. Adjust colour temperatures (CCT) and lumen outputs with the flip of a switch!



Explore **100+**
selectable products
from HALO, Metalux
and Lumark



SELECTABLE COLOURS (CCT)

Choose from a wide range of colour temperatures to set the ideal lighting scene.



SELECTABLE LUMENS

Select between the preset lumen outputs to create your optimal lighting experience.



Stay ahead of demanding project schedules

We've consolidated all legacy quick shipment programs (i.e. Rapid Response, Quick Ship, Rapid Ship) into one program. Quick Spec is your solution for fast-moving construction projects that require quick access to information, a broad portfolio of lighting and control products plus **shipping in 10 days or less.**

Superior solutions for functionality and delivery!



QUICK INFORMATION

Save time finding important information, assets, and tools for your projects.



QUICK SOLUTIONS

Tap into a broad portfolio of spec grade products in one location.



QUICK SHIPPING

The 10-day lead time on select products caters to fast-moving construction projects.



Look for the Quick Spec logo above the MarketPro product tables identifying qualified products.

Catalog Number	Description	Replaces Up To	Selectable CCT	Voltage	Selectable Lumens	Watts	LMF	LMF Product ID
LH85-1218-UNV-LA050-U	Lensed H8 Select, Medium Dist	4-T8, 3-T8x42, 1-T8x90 MH	4000K-5000K	120-277V	13,000-18,000	85-124	000083274141	S-JK3FT
LH85-1824-UNV-LA050-U	Lensed H8 Select, Medium Dist	6-T8x42, 6-T8, 400W MH	4000K-5000K	120-277V	18,000-24,000	119-156	000083275625	S-24YMLJ
LH85-2436-UNV-LA050-U	Lensed H8 Select, Medium Dist	8-T8x42, 10-T8, 750W MH	4000K-5000K	120-277V	24,360-36,000	155-246	000083276141	S-EUK8B9

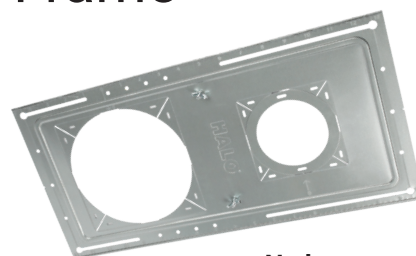
[CLICK HERE](#) to learn more about Quick Spec.

Product Spotlight

At Cooper Lighting Solutions, we build forward-thinking lighting solutions that make people's lives safer, while making buildings, homes and cities smarter and more sustainable. Learn about our latest lighting solutions and new MarketPro products.

▶ HALO Smashplate Mounting Frame Canless Downlight

The Smashplate is our latest cost effective canless solution for new construction applications that provides easy junction box mounting and adjusts to fit 3", 4" and 6" HALO canless fixtures.



**No hanger
bars!**

PAGE **15**

▶ Metalux SPHB High Bay

The SPHB is a compact linear solution with flexible features suitable for multiple applications. It offers selectable lumens from 12,000 up to 36,000, selectable CCT, and a sensor-ready port for quick plug and play control.



Page **36**

▶ Metalux SNX Striplight

The Metalux SNX series is a fully configurable LED commercial striplight that is a versatile, elegant, high-performance luminaire offered in three versions (base and lens).



**Now available
in MarketPro!**

Rapid Response



PAGE **31**



Canless
Downlighting
p. 9-15



Flushmounts
p. 15



Surface
Mounts
p. 16-18



Retrofit
Module
p. 19-20



Housings &
Trims
p. 21



Smart Wi-Fi
Lighting
p. 22-23

HALO[®]

HALO is the industry leader in high-quality recessed downlighting, offering the widest selection of innovative and flexible solutions for your application needs.

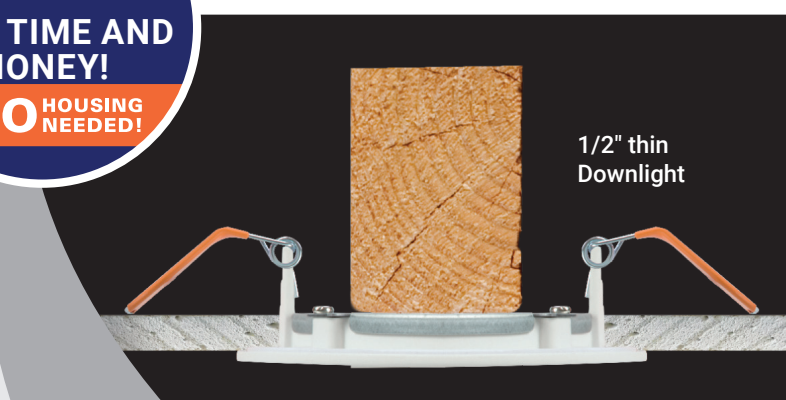
HALO® CANLESS DOWNLIGHTING

Installs Virtually Anywhere!

- Field-Selectable colour temperatures
- Installs into drywall/suspended ceiling (no housing required)
- Remote driver/junction box included
- Rated for insulated and non-IC ceilings

MORE FLEXIBILITY!
SAVE TIME AND MONEY!
NO HOUSING NEEDED!

Quick and Easy Installation



HALO SLIM CANLESS DOWNLIGHT PRODUCT SELECTION GUIDE

Good

Better

Best

		HLBSL & HLBE	HLBPH	HLB	HLBC
FEATURES/PERFORMANCE	Slim 1/2" Thin	✓	✓	✓	✓ + 2-in-1 Install Option (Canless-to-Can)
	Size / Shape	4" & 6" Round	4", 6" Round	3", 4", 6", 8", 12" Round, Square	4", 6" Round
	Lens	Smooth	Smooth	Low-glare Prismatic	Low-glare Prismatic
	Max Lumens (By size @ 3000K)	745, 1,025	805, 1,015	595, 790, 1,020, 2,350, 2,300	975, 1,270 (Lumen Select, Dedicated)
	Field SeleCCT Colour Temp Switch	3 CCT 27/30/3500K 30/40/5000K, Dedicated: 3000K	5 CCT 27/30/35/40/5000K	5 CCT 27/30/35/40/5000K	5 CCT w/ D2W D2W/27/30/35/40/5000K
CONTROL	Dimming Phase Cut (LE/TE) / 0-10V	10% Phase Cut	5% Phase Cut	5% Phase Cut, 0-10V ²	5% Phase Cut
	Estimated Life Hours	35K	50K	50K	50K
	Input Voltage	120V	120V	120V, 120-277V	120V, 120-277V
ACCESSORIES	Fits Mounting Frame	✓	✓	✓	✓
	Decorative Overlays ³	✓	✓	✓	✓ ¹
	Slide-in-Side™ Wire Traps ⁴		✓	✓	✓
	Mounting Bar	✓ ⁵	✓	✓	✓

¹ Round and Round-to-Square Designer Overlay Trims sold separately. ² HLBs are also available in QuickLink Low Voltage (Phase Cut or 0-10V) or Smart Wi-Fi Connected by WIZ Pro versions.

³ Matte Black, Tuscan Bronze, Satin Nickel, Paintable Matte White. ⁴ Slide-N-Side wire traps eliminate the need to use knockouts in most instances. Pre-wire outside of the j-box, fold down the tab(s), and insert non-metallic sheathed cable into the Slide-N-Side strain relief. ⁵ Mounting Bars are included with HLBSL but are sold separately for the HLBE Bulk Packs (HLBEMOUNT-12PK).

HALO CANLESS DOWNLIGHTING

HLB Downlight

CANLESS DOWNLIGHT

- Ultra-thin prismatic LED lens downlight with remote driver/junction box
- Installs into drywall/suspended ceiling (no j-box or housing required)
- 5 field-selectable CCT: 2700K, 3000K, 3500K, 4000K, 5000K; 90 CRI
- Install from below the ceiling in as little as 3-1/2-inch plenum height
- Insulated Ceiling (IC) rated and Non-IC rated applications



Catalog Number	Description	Finish	Replaces Up To	Selectable CCT	Voltage	Lumens	Watts	UPC	Energy Star ID
HLB4069FS1EMWR-C	4" Module, Round	White	65W INC	2700K-5000K	120V	752	12	080083856305	2322243
HLB6099FSE010MWR	6" Module, Round	White	75W INC	2700K-5000K	120-277V	1,061	15	080083912285	2351377
HLB6099FS1EMWR-C	6" Module, Round	White	65W INC	2700K-5000K	120V	1,103	16	080083856329	2322242
HLB8LS9FSE010MWR	8" Module, Round	White	150W INC	2700K-5000K	120-277V	2400	31	080083083367	2358045
HLB8169FS1EMWR	8" Module, Round	White	100W INC	2700K-5000K	120V	1,761	21	080083150601	2358047
HLB4RTRMMB	4" RD HLB Matte Black Trim	Black	Reflector-Trim	Accessory	Accessory	Accessory	Accessory	080083268375	N/A
HLB6RTRMMB	6" RD HLB Matte Black Trim	Black	Reflector-Trim	Accessory	Accessory	Accessory	Accessory	080083268412	N/A

HLB Lite Downlight

CANLESS DOWNLIGHT

- Ultra-thin LED lens downlight with remote driver/junction box
- Installs into drywall/suspended ceiling (no j-box or housing required)
- Features a round polymer trim and smooth lens
- 3 field-selectable CCT: 2700K, 3000K, 3500K or 3000K, 4000K, 5000K; 90 CRI
- Install from below the ceiling in 3/8-inch to 5/8-inch thick ceilings



Catalog Number	Description	Finish	Replaces Up To	Selectable CCT	Voltage	Lumens	Watts	UPC	Energy Star ID
HLBSL4069FS231EMWR	4" Module, Round	White	60W INC	2700K - 3500K	120V	753	10	080083912346	2349484
HLBSL4069FS351EMWR	4" Module, Round	White	60W INC	3000K - 5000K	120V	716	10	080083916368	2388758
HLBSL6099FS231EMWR	6" Module, Round	White	75W INC	2700K - 3500K	120V	954	13	080083912360	2388789
HLBSL6099FS351EMWR	6" Module, Round	White	75W INC	3000K - 5000K	120V	940	13	080083916382	2349480

HLBE Series

CANLESS DOWNLIGHT

- Canless 4" downlight
- Sold in contractor friendly bulk packs of 12
- Fixed 3000K soft white colour temperature
- Ultra-slim 1/2" thin design and installs in 2x2 plenum space
- Canless installation, no additional housing or junction box required



Catalog Number	Description	Finish	Replaces Up To	CCT	Voltage	Lumens	Watts	UPC
HLBE4069301EMWR-12PK	4" RD, LED Direct Mount	White	65W INC	3000K	120V	740	10.2	080083265503

HLBC Comfort Series CANLESS DOWNLIGHT

- Available in 4" and 6"
- Regressed prismatic lens for superior glare reduction and visual comfort
- 5 selectable colour temperature options and dim-to-warm option
- Round and square decorative overlays available
- Air-tite and wet location listed



Catalog Number	Description	Finish	Replaces Up To	Selectable CCT	Voltage	Lumens	Watts	UPC
HLBC4LS9FSD2W1EMWR	4" RD, Comfort LED Direct Mount	White	100W INC	2700K-5000K	120V	900	13	080083263097
HLBC6LS9FSD2W1EMWR	6" RD, Comfort LED Direct Mount	White	100W INC	2700K-5000K	120V	1200	16	080083263219
HLBC4RTRMMB	4" RD HLB Matte Black Round Trim	Black	Reflector-Trim	Accessory	Accessory	Accessory	Accessory	080083263332
HLBC4STRMMB	4" SQ HLB Matte Black Square Trim	Black	Reflector-Trim	Accessory	Accessory	Accessory	Accessory	080083263417
HLBC4STRMMW	4" SQ HLB Matte White Square Trim	White	Reflector-Trim	Accessory	Accessory	Accessory	Accessory	080083263356
HLBC6RTRMMB	6" RD HLB Matte Black Round Trim	Black	Reflector-Trim	Accessory	Accessory	Accessory	Accessory	080083263493
HLBC6STRMMW	6" SQ HLB Matte White Square Trim	White	Reflector-Trim	Accessory	Accessory	Accessory	Accessory	080083263516
HLBC6STRMMB	6" SQ HLB Matte Black Square Trim	Black	Reflector-Trim	Accessory	Accessory	Accessory	Accessory	080083263578

HLB Slim Edge Downlight CANLESS DOWNLIGHT

- Smooth LED lens downlight with remote driver/junction box
- Installs into drywall/suspended ceiling (no j-box or housing required)
- 5 field-selectable CCT: 2700K, 3000K, 3500K, 4000K, 5000K; 90 CRI
- Install from below the ceiling in as little as 1-1/2 inch plenum height
- Insulated Ceiling (IC) rated and Non-IC rated applications



Catalog Number	Description	Finish	Replaces Up To	Selectable CCT	Voltage	Lumens	Watts	UPC	Energy Star ID
HLBPH4069FS1EMWR-C	4" Module, Round	White	65W INC	2700K-5000K	120V	805	10	080083252398	2385132
HLBPH6099FS1EMWR-C	6" Module, Round	White	65W INC	2700K-5000K	120V	1,015	14	080083253517	2385133

HALO CANLESS DOWNLIGHTING

HALO CANLESS DOWNLIGHT PRODUCT SELECTION GUIDE



		LT-DM	CJB	RL-DM & RL-DM Night Light	HLA	RA-DM	RL-Slope	LCR
FEATURES / PERFORMANCE	Fixture Types	Downlights	Slim Downlight with Attached J-box/Driver + 2-in-1 Canless-to-Can Versions Available	Downlights & Downlight + Night Light	Gimbal Adjustables (30° Tilt/360° Rotation)	Gimbal Adjustables (35° Tilt/360° Rotation)	Regressed Slope Adjustable (9-45° Tilt)	Downlights, Wall Wash, DL + Emergency Battery Backup
	Sizes (Round)	3", 4", 6"	4", 6"	4", 6"	3", 4"	4", 6"	4", 6"	2", 4", 6", 8"
	Trim & Lens	Baffle or Smooth w/Flat Lens	Single Step Regressed w/ Flat smooth Lens	Baffle w/Curved Lens (NL has Transparent Trim)	Low-glare Prismatic or Smooth Lens	Baffle w/Flat Lens	Baffle w/Integrated Optic	Smooth w/Flat Lens
	Max Lumens (By size @ 3000K)	570, 645, 785	745, 920	955, 1,300 (Lumen Select, Dedicated) (NL: 780, 1,020)	710	790, 775	960, 1,630	835, 1,295, 3,100, 8,155
	Field SeleCCT Colour Temp Switch	3 CCT 27/30/3500K, 30/40/5000K, Dedicated: 3000K	5 CCT 27/30/35/40/5000K	5 CCT w/ D2W D2W/27/30/35/40 5000K (NL: 2000K)	5 CCT 27/30/35/40/5000K	5 CCT w/ D2W D2W/27/30/35/40 5000K	5 CCT 27/30/35 40/5000K	6 CCT 27/30/35/40 50/6500K
CONTROL	Dimming Phase Cut (LE/TE)/0-10V	10% Phase Cut ¹	10% Phase Cut ¹	5% Phase Cut, 0-10V ² (NL: 5% Phase Cut-both zones)	5% Phase Cut	5% Phase Cut	5% Phase Cut	5% Dual-Dim (Phase Cut + 0-10V), 0-10V
	Estimated Life Hours	35K	35K	70K (NL: 50K)	50K	50K	50K	50K
	Input Voltage	120V	120V	120V (NL: 120V)	120V	120V	120V	120-277V
HARDWARE	Fits Mounting Frames	✓	✓	✓	✓	✓	✓	✓
	Decorative Overlays ³			✓ (RL-DM only)				✓
	Slide-in-Side™ Wire Traps ⁴			✓	✓	✓	✓	✓
	Mounting Bar	✓		✓	✓	✓	✓	✓

¹ LT-DMs are also available in QuickLink Low Voltage (Phase Cut) versions.

² RL-DMs are also available in QuickLink Low Voltage (0-10V) versions.

³ Matte Black, Tuscan Bronze, Satin Nickel, Paintable Matte White.

⁴ Slide-N-Side wire traps eliminate the need to remove knockouts. Pre-wire outside of the j-box, fold down the tab, and insert non-metallic sheathed cable into the Slide-N-Side strain relief.

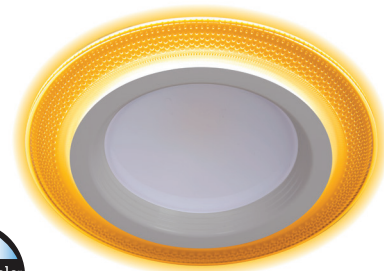
HALO CANLESS DOWNLIGHTING



Don't be left in the Dark!

RL Night Light Downlight CANLESS DOWNLIGHT

- 4 and 6-inch LED night light downlight with remote driver/junction box
- Installs into drywall/suspended ceiling (no j-box or housing required)
- 2" depth great for use in ultra-shallow plenum spaces
- Two modes: downlight mode and nightlight mode
- 5 selectable colour temperature options and dim-to-warm option



Catalog Number	Description	Finish	Replaces Up To	Selectable CCT	Voltage	Lumens	Watts	UPC	Energy Star ID
RLNL4079FSD2W1EWHDM	4" Direct Mount LED	White	60W INC	2700K - 5000K	120V	780	9.4	080083265039	2403400
RLNL6109FSD2W1EWHDM	6" Direct Mount	White	100W INC	2700K - 5000K	120V	1020	11.5	080083265053	2403403

RL Slope Ceiling Downlight CANLESS DOWNLIGHT

- 4 and 6-inch LED slope downlights with remote driver/junction box
- Adjusts from 9° to 45° to match virtually any ceiling pitch
- 5 field-selectable CCT: 2700K, 3000K, 3500K, 4000K, 5000K; 90 CRI
- Installs into drywall/suspended ceiling (no j-box or housing required)
- Compatible with HALO new construction mounting frames



Catalog Number	Description	Finish	Replaces Up To	Selectable CCT	Voltage	Lumens	Watts	UPC	Energy Star ID
RLS4099FS1EWHDMR-C	4" Module, Round	White	100W INC	2700K - 5000K	120V	966	11	080083253531	2382794
RLS6159FS1EWHDMR-C	6" Module, Round	White	100W INC	2700K - 5000K	120V	1,630	19	080083253555	2382795

HALO CANLESS DOWNLIGHTING

RL Baffle Trim Downlight

CANLESS DOWNLIGHT

- 4 and 6-inch regressed LED lens downlight with remote driver/junction box
- Installs into drywall/suspended ceiling (no j-box or housing required)
- 5 selectable colour temperature options and dim-to-warm option
- Can be installed in ½-inch to 1 ¼-inch thick ceilings
- Insulated ceiling (IC) and non-IC rated; Dimmable to 5% (120V dimmers)



Catalog Number	Description	Finish	Replaces Up To	Selectable CCT	Voltage	Lumens	Watts	UPC	Energy Star ID
RL4LS9FSD2W1EWHDM-C	4" Direct Mount LED	White	65W INC	2700K-5000K	120V	600/900	10.5	80083259045	2403141
RL6069FSD2W1EWHDM-C	6" Direct Mount	White	65W INC	2700K-5000K	120V	600	7.5	80083259106	2402947
RL6LS9FSD2W1EWHDM-C	6" Direct Mount	White	100W INC	2700K-5000K	120V	900/1200	13.8W	80083259120	2403144

LCR Light Commercial Downlight

CANLESS DOWNLIGHT

- Light commercial LED downlight in 2, 4, 6 and 8-inch sizes
- Installs into drywall/suspended ceiling (no j-box or housing required)
- 5 field-selectable CCT: 2700K, 3000K, 3500K, 4000K, 5000K; 90 CRI
- Regressed lens and smooth baffle provide high optical cutoff
- Wide distribution pattern is ideal for general area illumination; Airtight
- 120-277V input, 0-10V dimming to 5%



Catalog Number	Description	Finish	Replaces Up To	Selectable CCT	Voltage	Lumens	Watts	UPC	Energy Star ID
LCR208RD9FSE020	2" LCR Direct Mount	White	65W INC	2700K - 6500K	120-227V	800	9	080083259144	2405806
LCR408RD9FSE020	4" LCR Direct Mount	White	65W INC	2700K - 6500K	120-227V	800	9	080083261505	2405430
LCR412RD9FSE020	4" LCR Direct Mount	White	75W INC	2700K - 6500K	120-227V	1,200	15	080083261567	2405436
LCR615RD9FSE020	6" LCR Direct Mount	White	75W INC	2700K - 6500K	120-277V	1,604	16	080083261628	2405442
LCR621RD9FSE020	6" LCR Direct Mount	White	150W INC	2700K - 6500K	120-277V	2,329	25	080083261680	2405603
LCR630RD9FSE010	6" LCR Direct Mount	White	150W INC	2700K - 6500K	120-277V	2,981	30	080083261741	2405609

LCR Light Commercial Downlight

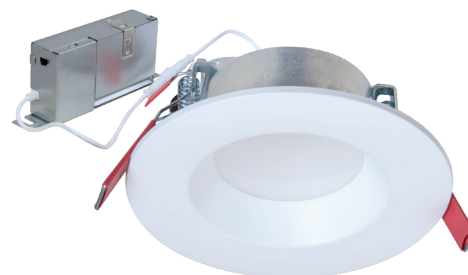
CANLESS DOWNLIGHT

Catalog Number	Description	Finish	UPC
LCR6TRMSC	6" Accessory Skin	Specular	080083890361

LT Selectable Downlight

CANLESS DOWNLIGHT

- 3, 4 and 6-inch LED downlights with remote driver/junction box
- Installs into drywall/suspended ceiling (no j-box or housing required)
- 3 field-selectable CCT: 2700K, 3000K, 3500K or 3000K, 4000K, 5000K; 90 CRI
- Dimmable down to 10% with select phase cut dimmers
- Insulated ceiling (IC) and non-IC rated; Deadfront

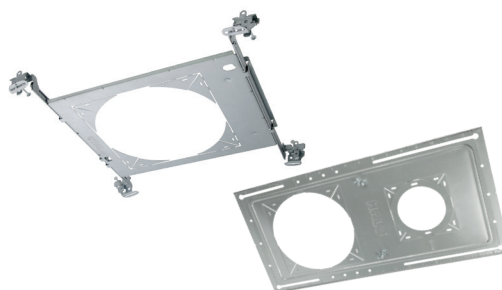


Catalog Number	Description	Finish	Replaces Up To	Selectable CCT	Voltage	Lumens	Watts	UPC	Energy Star ID
LT4069FS351EWHDMR-C	4" Module	White	60W INC	3000K-5000K	120V	600	7.8	80083263868	2389364
LT6089FS351EWHDMR-C	6" Module	White	100W INC	3000K-5000K	120V	600	8.5	80083263882	2389359

New Construction Mounting Frames

CANLESS DOWNLIGHT

- 3, 4 and 6-inch new construction frames for round and square products
- Accepts fixtures including remodel housings and direct-mount downlights
- Use to reserve the ceiling location or install products that need bar hangers
- Provides routing guidance for the drywall contractor
- Compatible with all direct mount products



Catalog Number	Description	UPC
HL4RSMF	4" Round/Square Mounting Frame	080083876167
HL6RSMF	6" Round/Square Mounting Frame	080083876181
SP346RS	3", 4", 6" Adjustable Mounting Frame	080083288236

FM Dimming Series

FLUSHMOUNT

- Sizes 8", 11", 15"
- 3 colour Field selectable CCT: 3000K, 4000K and 5000K for 8" fixture
- 5 colour Field selectable CCT: 2700K, 3000K, 3500K, 4000K, 5000K for 11" & 15" fixture
- Retrofit ready to fit 5" and 6" incandescent housings
- Perfect for bedroom, closets, dormitories and more



Catalog Number	Description	Replaces Up To	Selectable CCT	Voltage	Lumens	Watts	UPC	Energy Star ID
FM89S1EWHR	8" LED Flushmount	100W INC	3500K-5000K	120V	950	10.5	080083256587	2399871
FM119S1EWHR	11" LED Flushmount	22W CFL	3500K-5000K	120V	1050	14.5	080083257706	2399874
FM159S1EWHR	15" LED Flushmount	2-100W INC	3500K-5000K	120V	1700	18	080083257720	2399877

HALO[®] SURFACE MOUNTS

Suitable for a variety of applications!

- Below the ceiling installation with no plates or clips required
- Designed for square, octagon, pancake or round junction boxes
- Ideal for closets, storage areas, attics and basements

Quick and Easy Installation



HALO SURFACE MOUNT DOWNLIGHT PRODUCT SELECTION GUIDE



		HLCE	HLS	BLD	JBD	FM	SMD	SLD
FEATURES/PERFORMANCE	Size / Shape	4", 6" Round	6", 9" Round	4", 6" Round	4" Round, Square	8", 11", 15"	4", 6", 12" Round, Square	4", 6" Round
	Trim & Lens	Curved	Curved	Curved	Interchangeable Square, Round or Full Lens Diffuser	Round Lens	Squared Edge Flat	Low-glare Prismatic Flat Lens
	Max Lumens (By size @ 3000K)	965	945, 1,330	800	715	950, 1,050, 1,700	740, 790, 2,240	635, 1,300
	Field SeleCCT Colour Temp Switch	Dedicated 3000K	Dedicated 3000K, 4000K	5 CCT 27/30/35 40/5000K	5 CCT 27/30/35 40/5000K	5 CCT 27/30/35 40/5000K	5 CCT 27/30/35 40/5000K	5 CCT 27/30/35 40/5000K
CONTROL	Dimming Phase Cut (LE/TE)	10%	10%	5%	5%	10%	5%	5%
	Estimated Life Hours	35K	35K	50K	50K	50K	50K	50K
	Input Voltage	120V	120V	120V	120V	120V	120V, 120-277V	120V, 120-277V
HARDWARE	Decorative Overlays ¹				✓		✓	

¹ Matte Black, Tuscan Bronze, Satin Nickel, Paintable Matte White.

HALO SURFACE MOUNTS

SLD Downlight SURFACE MOUNT

- Ultra-low profile 4 and 6-inch surface mount LED downlight
- 5 field-selectable CCT: 2700K, 3000K, 3500K, 4000K, 5000K; 90 CRI
- Ceiling or wall mounting in standard and fire-rated compatible junction boxes
- SLD6 retrofits in 5-inch and 6-inch insulated ceiling (IC) and non-IC rated recessed housings
- Supply wire adapter with LED quick wiring connector included



Catalog Number	Description	Finish	Replaces Up To	Selectable CCT	Voltage	Lumens	Watts	UPC	Energy Star ID
SLDSL4069S1EMWR	4" Surface Downlight	White	65W INC	2700K-5000K	120V	600	9	080083153107	2395510
SLDSL6069S1EMWR	6" Surface Downlight	White	65W INC	2700K-5000K	120V	600	9	080083153121	2395511
SLD6129S1EMWR	6" Surface Downlight	White	75W INC	2700K-5000K	120V	1,200	15	080083153145	2373952

SMD Downlight SURFACE MOUNT

- Low-profile 4, 6 and 12-inch surface mount LED downlight with wide distribution
- 5 field-selectable CCT: 2700K, 3000K, 3500K, 4000K, 5000K; 90 CRI
- Ceiling/Wall mounting in many 3½- and 4-inch square, octagon or round junction boxes
- Retrofits 4-inch and 6-inch insulated ceiling (IC) and non-IC rated recessed housings
- Supply wire adapter with LED quick wiring connector included
- Dimmable to 5% (120V dimmers); 90 CRI



Catalog Number	Description	Finish	Replaces Up To	Selectable CCT	Voltage	Lumens	Watts	UPC	Energy Star ID
SMD4R69SWH-C	4" RD Surface Mount	White	75W INC	2700K-5000K	120V	700	9.5	080083150045	2365919
SMD6R69SWH-C	6" RD Surface Mount	White	75W INC	2700K-5000K	120V	800	9	080083150083	2395508
SMD12R209SWHE	12" Surface Mount	White	150W INC	2700K-5000K	120V	2,232	27	080083138005	2388938
SMD14R209SWHE	14" Surface Mount	White	150W INC	2700K-5000K	120V	2,014	26	080083138401	2388940

BLD Downlight SURFACE MOUNT

- 4 and 6-inch low-profile surface mount LED downlight with wide distribution
- 5 field-selectable CCT: 2700K, 3000K, 3500K, 4000K, 5000K; 90 CRI
- Installs in most 3½-inch and 4-inch square, octagon or round junction and pancake boxes
- Retrofits in 4, 5 and 6-inch insulated ceiling (IC) and non-IC rated recessed housings
- Supply wire adapter with LED quick wiring connector included



Catalog Number	Description	Finish	Replaces Up To	Selectable CCT	Voltage	Lumens	Watts	UPC	Energy Star ID
BLD4089SWHR-C	4" RD Surface, Direct Mount	White	65W INC	2700K-5000K	120V	802	10	080083867172	2362341
BLD6089SWHR-C	6" RD Surface, Direct Mount	White	65W INC	2700K-5000K	120V	812	10	080083867196	2362343

HALO SURFACE MOUNTS

JBD Slim Series

SURFACE MOUNT DOWNLIGHT

- Low profile surface mount downlight with smooth flat lens
- Ceiling or wall mounting in compatible 4" junction boxes
- Interchangeable round, square, and full-lensed designer trims in multiple finishes
- 5 colour field-selectable in 27/30/35/40/5000K
- LED Downlight, supply wire adapter, quick wiring connector and mounting hardware included
- 5% Dimming (Phase Cut), 50,000 hrs, 90+ CRI



Catalog Number	Description	Finish	Replaces Up To	Selectable CCT	Voltage	Lumens	Watts	UPC	Energy Star ID
JBD4079FS1EWH	4" Light w/ Matte White Trim	White	60W	2700K-5000K	120V	715	10	080083283514	2567962

Accessories (optional)

Catalog Number	Description	Finish	UPC
JBD4TRMMW	4" Round Trim	Matte White	080083283538
JBD4TRMMB	4" Round Trim	Matte Black	080083283590
JBD4TRMSN	4" Round Trim	Satin Nickel	080083283552
JBD4TRMTBZ	4" Round Trim	Tuscan Bronze	080083283576
JBD4STRMMW	4" Square Trim	Matte White	080083285679
JBD4STRMMB	4" Square Trim	Matte Black	080083285730
JBD4STRMSN	4" Square Trim	Satin Nickel	080083285693
JBD4STRMTBZ	4" Square Trim	Tuscan Bronze	080083285716
JBD4DIFF	4" Full Lens Diffuser	Diffuser	080083283613



HLS Series

SURFACE MOUNT

- 4, 6 and 9-inch surface mount LED disc lights
- Below the ceiling installation, no clips or plates needed
- Installs in most 3½-inch and 4-inch ceiling junction and pancake boxes
- 120V input, phase dimming down to 10% , Wet location rated
- Motion sensor option available



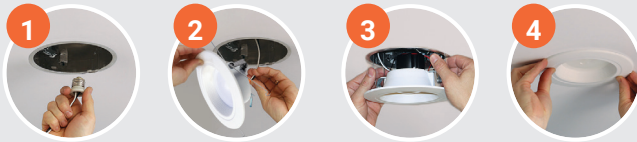
Catalog Number	Description	Finish	Replaces Up To	CCT	Voltage	Lumens	Watts	UPC	Energy Star ID
HLS4079301EWH-6BP	4" RD Surface Mount LED	White	65W INC	3000K	120V	753	13	080083256662	2401097
HLS6099301EWH-6BP	4" RD Surface Mount LED	White	100W INC	3000K	120V	925	16	080083256785	2401103
HLS6099401EWH-6BP	4" RD Surface Mount LED	White	100W INC	4000K	120V	1048	16	080083256808	2401102
HLS9129301EWH	9" RD Surface Mount LED	White	100W INC	3000K	120V	1285	17	080083256907	2401113
HLS9129401EWH	9" RD Surface Mount LED	White	100W INC	4000K	120V	1353	17	080083256921	2401112
HLSMS9129301EWH	9" RD Surface Mount LED	White	100W INC	3000K	120V	1285	17	080083256969	2401120

HALO[®] RETROFIT MODULE

Maximum energy savings with easy installation

- Compatible with most recessed housings and sizes
- Suitable for new construction and remodel
- Replaces traditional incandescent lighting

Quick and Easy Installation



HALO RECESSED LED TRIM PRODUCT SELECTION GUIDE

Good

Better

Best



		LT	LA	RL	RL Night Light	RA	RSQ
FEATURES / PERFORMANCE	LED Trim Type	Downlights	Gimbal Adjustables (35° Tilt/360° Rotation)	Downlights	Downlights	Gimbal Adjustables (35° Tilt/360° Rotation)	Square Downlights
	Size & Shape	4", 5/6" Round	4", 5/6" Round	3", 4", 5/6" Round	4", 5/6" Round	4", 5/6" Round	4", 5", 6" Square
	Trim & Lens	Baffle or Smooth w/ Flat Lens	Baffle w/ Flat Lens	Baffle w/ Curved Lens	Baffle w/ Curved Lens + Transparent Trim	Baffle w/ Flat Lens	Baffle w/ Flat Lens
	Max Lumens (By size @ 3000K)	570, 645, 785	955, 1,300 (Lumen Select, Dedicated)	780, 1,020	775, 1,065	710	790, 775
	Field SeleCCT Colour Temp Switch	5 CCT 27/30/35/40/5000K 3 CCT 27/30/3500K or 30/40/50K Dedicated: 3000K	Dedicated 3000K	5 CCT w/ D2W D2W 27/30/35/40 5000K	5 CCT w/ D2W D2W/27/30/35 40/5000K + Night Light (2000K)	5 CCT w/ D2W D2W 27/30/35/40 5000K	5 CCT 27/30/35 40/5000K
CONTROL	Dimming Phase Cut (LE/TE)	10%	10%	5% ¹	5% (Both Zones)	5%	5%
	Estimated Life Hours	50K	35K	70K	50K	50K	50K
	Input Voltage	120V	120V	120V	120V	120V	120V
HARDWARE	Decorative Overlays ²			✓			✓

¹ RL LED Trims are also available in Smart Wi-Fi Connected by WiZ Pro versions

² Matte Black, Tuscan Bronze, Satin Nickel, Paintable Matte White

HALO RETROFIT MODULE

LT LED All-Purpose Baffle Trim Downlight RETROFIT

- Baffle downlight trim retrofits 4, 5 and 6-inch insulated ceiling (IC) and non-IC rated recessed
- For use with HALO 4, 5 and 6-inch new construction and remodel housings
- Torsion springs or friction blades secure trim tightly
- Shallow, diffuse lens provides shielding to the source and a wet location listing; 90 CRI
- Suitable for use in showers or in outdoor covered ceiling applications; Airtight



Catalog Number	Description	Finish	Replaces Up To	Selectable CCT	Voltage	Lumens	Watts	UPC	Energy Star ID
LT460WH6930R-C	4" Retrofit Baffle-Trim	White	60W INC	3000K	120V	554	8	080083873692	2309297
LT560WH6930R-C	5/6" Retrofit Baffle-Trim	White	60W INC	3000K	120V	683	10	080083873715	2309300

LT SeleCCTable™ Downlight RETROFIT

- LED downlights available with smooth splay or baffle trim
- Installs in 4, 5 and 6-inch insulated ceiling (IC) and non-IC rated recessed housings
- Dedicated or 5 field-selectable CCT: 2700K, 3000K, 3500K, 4000K, 5000K; 90 CRI
- Dimmable down to 10% with select phase cut dimmers
- Suitable for use in showers and outdoor covered ceilings



Catalog Number	Description	Finish	Replaces Up To	Selectable CCT	Voltage	Lumens	Watts	UPC	Energy Star ID
LT4069FS1EWHR	4" Retrofit Baffle-Trim	White	60W INC	2700K-5000K	120V	600	6.7	080083283965	2508121
LT56079FS1EWHR	5/6" Retrofit Baffle-Trim	White	65W INC	2700K-5000K	120V	750	7.9	080083284047	2508241
LTSS4069FS351EWHWR	4" Retrofit Smooth Splay Trim	White	40W INC	3000K-5000K	120V	600	7	080083162543	2389268

RL SeleCCTable™ Downlight RETROFIT

- LED downlight with baffle trim and 5 selectable colour temperatures and dim-to-warm option
- CRI: 90, L70 at 70,000 hours (70% lumen maintenance at 70,000 hours)
- 120V, Phase dimming down to 5%, AIR-TITE™, ENERGY STAR™ certified
- Damp and wet location listed for showers and protected ceilings



D2W



Catalog Number	Description	Finish	Replaces Up To	Selectable CCT	Voltage	Lumens	Watts	UPC	Energy Star ID
RL3059FSD2W1EWH-C	3" Direct Mount LED Downlight	White	65W INC	2700K-5000K	120V	600/900	6.4	80083259007	2402944
RL4LS9FSD2W1EWH-C	4" Retrofit Baffle-Trim	White	65W INC	2700K-5000K	120V	970	10.9	80083259021	2402941
RL56069FSD2W1EWH-C	5/6" Retrofit Baffle-Trim	White	65W INC	2700K-5000K	120V	700	6.8	80083259069	2402950
RL56LS9FSD2W1EWH-C	5/6" Retrofit Baffle-Trim	White	100W INC	2700K-5000K	120V	1355	14.3	80083259083	2402953

E Series HOUSING

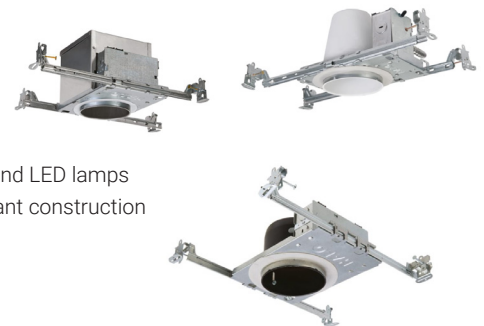
- Compact and efficient housings for new or retrofit residential or light commercial construction
- Optimized and listed for EISA compliant tungsten-halogen lamps and incandescent, CFL and LED lamps
- For installation in insulated Ceiling (IC) and non-IC rated ceilings; Airtight code compliant
- Includes ultra-shallow housings for application with limited plenum space
- Use with a variety of trims and finishes for different lighting effects or match any decor



Catalog Number	Description	Socket	Lamp Source	Voltage	UPC
E5ICAT	5" IC, Air-Tite, New Construction	E26	HAL., INC., LED, CFL	120V	080083737420

H Series HOUSING

- The standard in the industry for both commercial and residential applications
- Optimized and listed for EISA compliant tungsten-halogen lamps and incandescent, CFL and LED lamps
- For installation in insulated Ceiling (IC) and non-IC rated ceilings with airtight code compliant construction
- Use with a variety of trims and finishes for different lighting effects or match any decor
- Wide variety of trims available for desired lighting effect



Catalog Number	Description	Socket	Lamp Source	Voltage	UPC
H245ICAT	4" New Construction Ultra Shallow	Quick Connect (No Socket)	LED Modules	120/277V	080083770717
H99ICAT	4" New Construction, IC Air-Tite, Shallow	E26	HAL., INC., LED, CFL	120V	080083582259
H99TAT	4" New Construction, Non-IC, Air-Tite, Shallow	E26	HAL., INC., LED, CFL	120V	080083584260

4" and 5" Series TRIMS AND ACCESSORIES

- Trims shape light to minimize aperture glare and reduce ceiling brightness
- Open trims focus the downlighting beam to provide uniform distribution
- Can be used in new construction and remodel housings
- Offered in a variety of styles and accept different lamp types



Catalog Number	Description	Finish	Lamp Source*	UPC
993W	4" Coilex Baffle	White	Halogen, INC, LED, CFL	080083628483
5125WB	5" Full Cone Baffle	White	Halogen, INC, LED, CFL	080083743162
5010W	5" Trim White Coilex Trim	White	Accessory	662400602750
VBB2	Vapour Barrier Boot 24pcs Per Carton	Blue	N/A	662400500575
H347	Stepdown Transformer from 347V to 120V, 75VA	Accessory	Accessory	662400151289

Live Smarter in Full Colour



Wireless Dimming



Wet or Damp Locations



Standard E26 Base



Shows Natural Colors



Wi-Fi Connected



Very Wide Angle



Circadian Rhythm



16 Million Colours



Tunable White



HALO is now available with WiZ Pro!

Illuminate spaces with the perfect lighting. Set the mood with 16 million colours + white tuning using the WiZ App or preferred compatible voice assistant.

WiZ Pro also provides features and tools installers need to setup and manage multiple projects with speed and efficiency.



DIY SETUP

Anyone can claim and control lights over Wi-Fi using the WiZ App.



PRO SETUP

The WiZ Pro Setup App allows installers to do pre-Wi-Fi claiming, manage multiple projects and access the WiZ Pro Dashboard for more advanced features.



WIZclick FEATURE

Toggle your switch to change between 2 scenes

Integrations



RL Smart Wi-Fi Recessed Baffle

LED TRIM (CONNECTED BY WIZ PRO)

- Set up from the WiZ app to wirelessly control lighting temperature, colour, dimming and scenes along with home automation
- Fixtures provide 16 million colours and tunable white light from 2200-6500K
- LED downlight with remote driver/junction box and mounting hardware included
- Wi-Fi Control and Dimming to 5% via WiZ App, 50,000 hrs, 90+ CRI



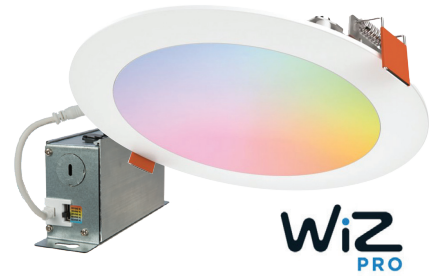
WiZ PRO

Catalog Number	Description	Finish	Selectable CCT	Voltage	Lumens	Watts	UPC	Energy Star ID
RL4069WZRGBWWHR-C	4" Smart Wi-Fi Baffle Trim (WiZ Pro)	White	Full Colour & Tunable White (2200-6500K)	120V	632	8	080083256525	2397255
RL56069WZRGBWWHR-C	5/6" Smart Wi-Fi Baffle Trim (WiZ Pro)	White	Full Colour & Tunable White (2200-6500K)	120V	736	8	080083256501	2397258

HLB Smart Wi-Fi Slim

CANLESS LED DOWNLIGHTS (CONNECTED BY WIZ PRO)

- Set up from the WiZ app to wirelessly control lighting temperature, colour, dimming and scenes along with home automation
- Fixtures provide 16 million colours and tunable white light from 2200-6500K
- LED downlight with remote driver/junction box and mounting hardware included
- Wi-Fi Control and Dimming to 5% via WiZ App, 50,000 hrs, 90+ CRI



WiZ PRO

Catalog Number	Description	Finish	Selectable CCT	Voltage	Lumens	Watts	UPC	Energy Star ID
HLB4069WZRGBWMWR-C	4" Smart Wi-Fi Downlight (WiZ Pro)	White	Full Colour & Tunable White (2200-6500K)	120V	606	7.4	080083256563	2408244
HLB6099WZRGBWMWR-C	6" Smart Wi-Fi Downlight (WiZ Pro)	White	Full Colour & Tunable White (2200-6500K)	120V	974	12	080083256549	2408245

ESF Smart Wi-Fi Floodlight

OUTDOOR SECURITY (CONNECTED BY WIZ PRO)

- Set up from the WiZ app to wirelessly control lighting temperature, colour, dimming and scenes along with home automation
- Fixtures provide 16 million colours and tunable white light from 2200-6500K
- LED floodlight with minimal design, perfect for security and ambiance outdoors
- WiFi Control and Dimming via WiZ app, 50,000 hrs, wet location rated, up to 2000 lumens



WiZ PRO

Catalog Number	Description	Finish	Selectable CCT	Voltage	Lumens	Watts	UPC
ESF2ARGBWFB-WIZ	4" Smart Wi-Fi Baffle Trim (WiZ Pro)	Black	Full Colour & Tunable White (2200-6500K)	120V	2235	29	80083260300
ESF2ARGBFW-WIZ	5/6" Smart Wi-Fi Baffle Trim (WiZ Pro)	White	Full Colour & Tunable White (2200-6500K)	120V	2445	29	80083260324



HC Series
Downlights
p. 25-26

HALO[®]

COMMERCIAL

LED DOWNLIGHTS

Commercial LED Lighting provides the right balance of visual comfort and energy efficiency, with proven and tested products that always meet commercial code and never break the budget.

HALO COMMERCIAL DOWNLIGHTS

HC4 Downlight Series

DOWNLIGHT

- 4" aperture new construction/remodel downlights series
- Retrofit downlighting kit installs from below ceiling for LED upgrades
- 2 light engines; Lumens: 1,000, 1,500, 2,000 or 3,000, 4,000
- 4 colour temperatures: 2700K, 3000K, 3500K, 4000K CCT; CRI 80 or 90
- Distributions: Precision-formed reflectors in Narrow, Medium and Wide



Catalog Number	Description	Replaces Up To	CCT	Voltage	Selectable Lumens (up to)	Watts	UPC
HC410D010	Recessed 4-inch LED downlight	Housing	N/A	120-227V	1,000	10.1	080083860586
HC415D010	Recessed 4-inch LED downlight	Housing	N/A	120-227V	1,500	14.2	080083860609
HC420D010	Recessed 4-inch LED downlight	Housing	N/A	120-227V	2,000	21.4	080083860623
HC430D010	Recessed 4-inch LED downlight	Housing	N/A	120-227V	3,000	27.2	080083860654
HM40525830	4" LED Module 80CRI	150W INC, 2-26W CFL	3000K	120-277V	500-2,500	6/10/15/21/28	080083213924
HM40525835	4" LED Module 80CRI	150W INC, 2-26W CFL	3500K	120-227V	500-2,500	6/10/15/21/28	080083213948
HM40525840	4" LED Module 80CRI	150W INC, 2-26W CFL	4000K	120-227V	500-2,500	6/10/15/21/28	080083213962
HM40525935	4" LED Module 80CRI	150W INC, 2-26W CFL	3500K	120-227V	500-2,500	6/10/15/21/28	080083214044

Complete downlight includes: Housing + LED Module + Reflector.

HC4 LED 4" Downlight Series Accessories

Catalog Number	Description	Finish	UPC
41MDC	4" Trim Conical Reflector, Medium 60° Beam Angle	Specular Clear, Polished Flange	080083850167
41MDCWF	4" Trim Conical Reflector, Medium 60° Beam Angle	Specular Clear, White Flange	080083850228
41MDH	4" Trim Conical Reflector, Medium 60° Beam Angle	Semi-Specular Clear, Polished Flange	080083850181
41MDHWF	4" Trim Conical Reflector, Medium 60° Beam Angle	Semi-Specular Clear, White Flange	080083850242
41MDW	4" Trim Conical Reflector, Medium 60° Beam Angle	White Finish, White Flange	080083850204
41WDH	4" Trim Conical Reflector, Wide 75° Beam Angle	Semi-Specular, Polished Flange	080083850280
41WDC	4" Trim Conical Reflector, Wide 75° Beam Angle	Specular Clear, Polished Flange	080083850266
41WDCWF	4" Trim Conical Reflector, Wide 75° Beam Angle	Specular Clear, White Flange	080083850365



41MDC



41WDC



41MDHWF

HALO COMMERCIAL DOWNLIGHTS

HC6 Downlight Series

DOWNLIGHT

- 6" aperture new construction/remodel downlights series
- 2 retrofit kits for installation from below ceiling for LED upgrades
- 2 light engines, Lumens: 1,000, 1,500, 2,000 or 3,000, 4,000
- Distributions: Precision-formed reflectors in Narrow, Medium and Wide
- Connected lighting and emergency options (factory and field installed)



Catalog Number	Description	Replaces Up To	CCT	Voltage	Selectable Lumens (up to)	Watts	UPC
HC610D010	Recessed 6-inch LED downlight	Housing	N/A	120-227V	1,000	36	080083883646
HC615D010	Recessed 6-inch LED downlight	Housing	N/A	120/277V	1,500	36	080083883660
HC620D010	Recessed 6-inch LED downlight	Housing	N/A	120/277V	2,000	36	080083883684
HM60525830	6" LED module 80CRI	150W INC, 2-26W CFL	3000K	120-227V	500-2,500	6/10/15/21/28	080083214648
HM60525835	6" LED module 80CRI	150W INC, 2-26W CFL	3500K	120-227V	500-2,500	6/10/15/21/28	080083214662
HM60525840	6" LED module 80CRI	150W INC, 2-26W CFL	4000K	120/277V	500-2,500	6/10/15/21/28	080083214686

Complete downlight includes: Housing + LED Module + Reflector.

HC6 LED 6" Downlight Series Accessories

Catalog Number	Description	Finish	UPC
61MDC	6" Trim Conical Reflector, Medium 60° Beam Angle	Specular Clear, Polished Flange	080083850969
61MDCWF	6" Trim Conical Reflector, Medium 60° Beam Angle	Specular Clear, White Flange	080083851027
61MDH	6" Trim Conical Reflector, Medium 60° Beam Angle	Semi-Specular Clear, Polished Flange	080083850983
61MDHWF	6" Trim Conical Reflector, Medium 60° Beam Angle	Semi-Specular, White Flange	080083851041
61MDW	6" Trim Conical Reflector, Medium 60° Beam Angle	White Finish, White Flange	080083851003
61NDW	6" Trim Conical Reflector, Narrow 55° Beam Angle	White Finish, White Flange	080083850907
61WDC	6" Trim Conical Reflector, Wide 65° Beam Angle	Specular Clear, Polished Flange	080083851065
61WDH	6" Trim Conical Reflector, Wide 65° Beam Angle	Semi-Specular Clear, Polished Flange	080083851089



61MDC



61WDC



Flat Panels
p. 28-29



Troffers
p. 29-30



Strip Lights
p. 31-32



Wraps
p. 32-33

METALUX

COMMERCIAL LED LIGHTING

Metalux Commercial features a wide selection of affordable yet aesthetically pleasing fixtures with an expanded offering of selectable colour temperatures and lumen options.

CGT Contractor Go-to Series FLAT PANEL

- Affordable backlit LED panel that fits in shallow plenums with room to spare
- Robust die-formed steel housing is post-painted for maximum durability
- Acrylic micro optics provide uniform illumination from corner to corner
- Extruded aluminum bezel with mitered corners tightly sealed to housing for durability
- Ideal for office spaces, schools, healthcare and retail merchandising areas



Dedicated CCT & Lumens

Catalog Number	Description	Replaces Up To	CCT	Voltage	Lumens	Watts	UPC	DLC Product ID
14CGT4040C	1x4 CGT Backlit LED Panel	2-T8 32W, 3-T8 32W	4000K	120/277V	4,000	39.4/38.8	080083879540	PGNH8KOZ
22CGT3535C	2'x2' CGT Backlit LED Pane	3-T8	3500K	120/277V	3,449	32	080083880003	P6WE1HNZ
22CGT3540C	2'x2' CGT Backlit LED Pane	3-T8	4000K	120/277V	3,582	32	080083880027	P0YGNM7S
24CGT4535C	2'x4' CGT Backlit LED Panel	2-T8, 3-T8	3500K	120/277V	4,268	38	080083880089	P28JP113
24CGT4540C	2'x4' CGT Backlit LED Panel	2-T8, 3-T8	4000K	120/277V	4,432	38	080083880102	PLTEVMIJ
24CGT4550C	2'x4' CGT Backlit LED Panel	2-T8, 3-T8	5000K	120/277V	4,432	38	080083880126	P8BJJLKN
24CGT5540C	2'x4' CGT Backlit LED Panel	3-T8, 4-T8	4000K	120/277V	5,337	47	080083880188	P5F04P82

CGT LED Panel Series and Accessories

Catalog Number	Description	UPC
CGTSURF14	1x4 CGT SURFACE MOUNT KIT	080083083145
CGTSURF22	2x2 CGT SURFACE MOUNT KIT	080083083121
CGTSURF24	2X4 CGT SURFACE MOUNT KIT	080083083107

CGTS NUV FLAT PANEL

- Backlit LED panel with selectable switches located on the side of the junction box, for quick and easy adjustment
- Ideal for office spaces, schools, healthcare facilities and retail merchandising areas
- Acrylic micro-optics provide uniform illumination from corner to corner
- Three colour temperature and three lumen package choices



Selectable CCT & Lumens

Catalog Number	Description	Replaces Up To	Selectable CCT	Voltage	Selectable Lumens	Watts	UPC	DLC Product ID
14CGTS-NUV	1'x4' Recessed Panel	2-T8 32W, 3-T8 32W	3500K-5000K	120-347V	3,500-4,500	30,35,40	080083247806	PLA9H842922L
22CGTS-NUV	2'x2' Recessed Panel	2-T8 32W, 3-T8 32W	3500K-5000K	120-347V	3,500-4,500	30,35,40	080083247837	PLDJXEJPJEQR
24CGTS-NUV	2'x4' Recessed Panel	3-T8 32W, 3-T5 28W	3500K-5000K	120-347V	4,000-6,000	35,40,50	080083247851	PLJQJPJJ7TDJ
CGTSNUV-SURF14	1'x4' Surface Mount Kit	Accessory	N/A	Accessory	N/A	N/A	080083248308	N/A
CGTSNUV-SURF22	2'x2' Surface Mount Kit	Accessory	N/A	Accessory	N/A	N/A	080083248322	N/A
CGTSNUV-SURF24	2'x4' Surface Mount Kit	Accessory	N/A	Accessory	N/A	N/A	080083248346	N/A

FPanel Series

FLAT PANEL

- Ultra-thin LED flat panel; Less than 2-inches height for shallow plenums
- Fixed and selectable configurations available
- Selectable switch to set colour temperature, lumens and watts desired for task
- Refined visual optics, superior acrylic light guide; uniform corner to corner illumination
- Ideal solution for office spaces, schools, healthcare facilities and retail merchandising areas



Dedicated CCT & Lumens

Catalog Number	Description	Replaces Up To	CCT	Voltage	Lumens	Watts	UPC	DLC Product ID
14FP4240C	1x4 LED Flat Panel	2-T8 32W, 3-T8 32W	4000K	120/277V	4,451	39	080083833481	PBGLLF3K
22FP3240C	2'x2' Recessed Panel	3-T8	4000K	120/277V	3,560	30	080083833542	PUOIG6S2
22FP4235C	2'x2' Recessed Panel	2-U6T8	3500K	120/277V	4,641	39	080083833580	P8HIK308
22FP4240C	2'x2' Recessed Panel	3-U6T8	4000K	120/277V	4,567	39	080083833603	PELH4PNQ
24FP4740C	2'x4' Recessed Panel	2-T8, 3-T8	4000K	120/277V	4,858	40	080083833665	PGY6ID6B
24FP6440C	2'x4' Recessed Panel	3-T8, 4-T8	4000K	120/277V	6,611	59	080083833726	N/A

FPanel LED Series and Accessories

Catalog Number	Description	UPC
FPSUS24	Suspension Kit for Panels (CGT, FP, FPX)	080083258895
FPXSURF14	1x4 Flat panel Surface mounting kit	080083867424
FPXSURF22	2x2 Flat panel Surface mounting kit	080083867387
FPXSURF24	2x4 Flat panel Surface mounting kit	080083867400

Achieva Recessed Selectable

TROFFER

- Design friendly with (3) selectable colour temperatures and (3) selectable lumen packages
- Ultra slim 1.5" design for shallow plenum applications
- One piece stamped housing delivers improved modern aesthetic look
- Up to 146 LPW for increased energy savings and reduced watts per square foot



Catalog Number	Description	Replaces Up To	Selectable CCT	Voltage	Lumens	Watts	UPC	DLC Product ID
14ARS-L3C3-NUV	1x4 Troffer	2-T8 32W	3500K;4000K;5000K	120-347V	2800-4600	20/25/34	080083287529	S-TKCBT4
22ARS-L3C3-NUV	2x2 Troffer	3-U6T	3500K;4000K;5000K	120-347V	2800-4300	20/27/33	080083287543	S-G4W4DW
24ARS-L3C3-NUV	2x4 Troffer	2-T8 32W, 2-T5 54W	3500K;4000K;5000K	120-347V	3400-6300	25/33/47	080083287567	S-3KXXVF

Cruze ST Recessed Series TROFFER

- Architectural center basket lens troffer with aesthetic appeal
- Latch-less design provides clean architectural look; Ribbed, frosted acrylic lens
- High-performance LED system with advanced light distribution
- Ideal choice for commercial, institutional and healthcare facilities



Dedicated CCT & Lumens

Catalog Number	Description	Replaces Up To	CCT	Voltage	Lumens	Watts	UPC	DLC Product ID
14CZ2-39-UNV-L835-CD1-U	1'x4', Troffer	2-T8 32W	3500K	120/277V	3,545	27.3	080083151103	PJ5LDRBX
14CZ2-39-UNV-L840-CD1-U	1'x4', Troffer	2-T8 32W	4000K	120/277V	3,545	27.3	080083147335	PCSA3DGA
22CZ2-39-UNV-L835-CD1-U	2'x2', Troffer	3-T8, 2-T5HO	3500K	120/277V	3,943	31	080083881284	P0AXJUK1
22CZ2-39-UNV-L840-CD1-U	2'x2', Troffer	3-T8, 2-T5HO	4000K	120/277V	3,943	31	080083881307	PU7UA6BJ
22CZ2-44-UNV-L835-CD1-U	2'x2', Troffer	3-U6T8	3500K	120/277V	4,424	33	080083881321	PXAMKHNN
22CZ2-44-UNV-L840-CD1-U	2'x2', Troffer	3-U6T8	4000K	120/277V	4,424	33	080083881345	PKWC1G2R
24CZ2-50-UNV-L835-CD1-U	2'x4', Troffer	2-T8, 2-T5	3500K	120/277V	5,015	39.6	080083881628	P0K3FN8Z
24CZ2-50-UNV-L840-CD1-U	2'x4', Troffer	2-T8, 2-T5	4000K	120/277V	5,015	39.6	080083881642	PI0YCHQ9

Note: DLC Premium items are noted in bold.

GRLED Series TROFFER

- Built and designed for general purpose lighting applications
- Shallow, low-profile housing, makes it compatible with highly restrictive plenums
- Traditional prismatic A12 lens and door assembly; Insulated ceiling (IC) rated
- Easy to install; Fits most T-grid systems; Below the ceiling maintenance
- Great choice for commercial offices, schools, hospitals, retail and more applications



Catalog Number	Description	Replaces Up To	CCT	Voltage	Lumens	Watts	UPC	DLC Product ID
24GR-LD5-48-F1-UNV-L835-CD1-U	2'x4' A Lens Troffer	2-T8 32W	3500K	120/277V	4,800	43	080083817160	PUSH29NN
24GR-LD5-48-F1-UNV-L840-CD1-U	2'x4' A Lens Troffer	2-T8 32W	4000K	120/277V	4,800	43	080083817153	PMDVK98H
24GR-LD5-64-F1-UNV-L835-CD1-U	2'x4' A Lens Troffer	2-T8 32W	3500K	120/277V	6,400	48	080083798889	P9KHQJP1

Note: DLC Premium items are noted in bold.

Troffer options and Accessories

Catalog Number	Description	UPC
DF-14W-U	1'x4' Dry Wall Frame Kit	662401232949
DF-22W-U	2'x2' Dry Wall Frame Kit	662401232963
DF-24W-U	2'x4' Dry Wall Frame Kit	662401232970

METALUX STRIPLIGHTS

SLSTP Series STRIPLIGHT

- LED strip light with decorative end caps and toolless lens removal
- Suitable for either single or continuous row application
- Surface, suspended or wall mounted capable
- Impact resistant polycarbonate lens reduces maintenance
- Ideal for warehouse, retail, office or retrofit applications



Selectable CCT & Lumens

Catalog Number	Description	Replaces Up To	Selectable CCT	Voltage	Selectable Lumens	Watts	UPC	DLC Product ID
4SLSTPSLC-347	4' Single Lens	2-T8 32W, 1-T5HO 54W	3500K-5000K	347V	2,400-6,000	18/30/46	080083249466	S-GLY0MQ
4SLSTPSLC-UNV	4' Single Lens	2-T8 32W, 1-T5HO 54W	3500K-5000K	120/277V	2,400-6,000	18/30/46	080083174416	S-5PSVX8
8SLSTPSLC-347	8' Single Lens	4-T8 32W, 2-T12 75W	3500K-5000K	347V	4,300-11,200	33/63/85	080083249480	S-6CXKOJ
8SLSTPSLC-UNV	8' Single Lens	4-T8 32W, 2-T12 75W	3500K-5000K	120/277V	4,300-11,200	33/63/85	080083174423	S-DH9QR0

Dedicated CCT & Lumens

Catalog Number	Description	Replaces Up To	CCT	Voltage	Lumens	Watts	UPC	DLC Product ID/ Energy Star
4SLSTP4040DD-120V	4' Single Lens	2-T8 32W, 1-T5HO 54W	4000K	120V	4,000	40	080083705801	2268835 *
4SLSTP4040DD-UNV	4' Single Lens	2-T8 32W, 1-T5HO 54W	4000K	120/277V	4,927	41	080083705825	PXZQGN9C
8SLSTP8040DD-UNV	8' Single Lens	4-T8 32W, 2-T12 75W	4000K	120/277V	9,304	79	080083814787	P0K8WFD1

Note: Energy Star items are noted with an Asterisk (*).

Sensor Kits

Catalog Number	Description	PIR Sensor	UPC
SLSTP MS00 KIT	SLSTP Field Installable Sensor KIT	100% / 50% / OFF	080083254200
SLSTP MS25 KIT	SLSTP Field Installable Sensor KIT	100% / 50% / Low (~30%)	080083254224

SNX Series STRIP LIGHT

- Contemporary single frosted radial lens LED strip light
- Replaces two or four lamp fluorescents up to 150W
- 3 Color Field-Selectable in 35/40/5000K and dedicated in 4000K
- 3 Field-Selectable lumens: Low, Medium or High settings
- Single or continuous row via surface or suspended mount



Rapid Response



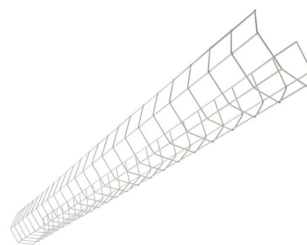
Selectable CCT & Lumens

Catalog Number	Description	Replaces Up To	Selectable CCT	Voltage	Selectable Lumens	Watts	UPC	DLC Product ID
4SNX-SL3-LW-UNV-CC83-CD1-U	4' Single Lens	2-T8 32W, 1-T5HO 54W	3500K-5000K	120-277V	2,000-6,100	17-51	080083265107	S-VF0RKS
8TSNX-SL3-LW-UNV-CC83-CD2-U	8' Single Lens	4-T8 32W, 2-T12 75W	3500K-5000K	120-277V	4,100-12,000	34-101	080083265114	S-7FC8RS

METALUX STRIPLIGHTS | WRAPS

SSF Series STRIPLIGHT

- Heavy-Duty steel welded wireguard
- Protects 4' striplights from damage and abuse
- Painted after fabrication, white standard
- Fits most 4' Cooper Lighting strip lights



Catalog Number	Description	Replaces Up To	Selectable CCT	Voltage	Selectable Lumens	Watts	UPC
WG/SSF-4FT-B	4' White Wire Guard	Accessory	Accessory	Accessory	Accessory	Accessory	662400106647

ST Series STRIPLIGHT

- Full-length LED striplight ideal for replacing lamp fluorescent strips
- Superior performance with lumens up to 9,200 and 115 lumens per watt
- 3 field-selectable CCT options available: 3500K, 4000K, 5000K; 80 CRI
- Continuous row mount aligner included to add-on length as needed
- Low voltage 0-10V dimming to 10%



Dimming and Selectable CCT

Catalog Number	Description	Replaces Up To	Selectable CCT	Voltage	Lumens	Watts	UPC	DLC Product ID
4ST2L40SC3	4' Dual Lens	2-T8 32W, 1-T5HO 54W	3500K-5000K	120/277V	4,760	40	080083241583	S-TSP41D

Dedicated CCT & Lumens

Catalog Number	Description	Replaces Up To	CCT	Voltage	Lumens	Watts	UPC	Energy Star ID
4ST1L2040R	4' Single Lens	1-T8 32W	4000K	120/277V	2,298	20	080083838189	2382010
8ST2L8040R	8' Dual Lens	4-T8 32W, 2-T12 75W	4000K	120/277V	8,867	78	080083838202	2382033

Achieva™ Surface WRAP

- Ideal for replacing up to four lamp fluorescent and low-bay linear fluorescents
- 3 colour Field-Selectable in 35/40/5000K, Field-Selectable lumens: 2,250 - 12,500
- Designed for single or continuous row mount
- Suitable for ceiling, wall, or suspension mounting



Catalog Number	Description	Replaces Up To	Selectable CCT	Voltage	Selectable Lumens	Watts	UPC	DLC Product ID
4AWWS-L3C3-NUV	4' Wide Modern Wrap, Dimming	2-T8 32W	3500K-5000K	120-347V	4,500-6,500	32/40/50	Pending	Pending

NWS Series

WRAP

- Ideal for replacing two or three lamp fluorescents up to 96W
- 3 field-selectable CCT: 3500K, 4000K, 5000K
- Field-selectable lumens: 2,000 - 5,272
- Surface (wall or ceiling) mount via junction box or direct to surface, UNV 0-10V dimming to 10%



Catalog Number	Description	Replaces Up To	Selectable CCT	Voltage	Selectable Lumens	Watts	UPC	DLC Product ID
4NW35C3R	4ft Linear LED Wrap	2-T8 32W	3000K-4000K	120V	3500	35	080083257447	2398236
4NWS3C3-NUV	4ft Linear LED Wrap	2-T8 32W, 2-T12	3500K-5000K	120-347V	4000-5400	28/34/42	080083257546	S-YJTA0N

WP Series

WRAP

- Compact LED wrap light delivers value and energy savings
- Perfect retrofit solution for replacing single or 2-lamp fluorescent wraparounds
- Low-profile, highly versatile design; Post-painted die-formed channel
- Prismatic lens ensures even, glare-free light distribution



Catalog Number	Description	Replaces Up To	CCT	Voltage	Lumens	Watts	UPC	Energy Star ID
4WP3040R	4' Linear Utility	2-T8 32W	4000K	120V	3,400	31	080083847167	2394660

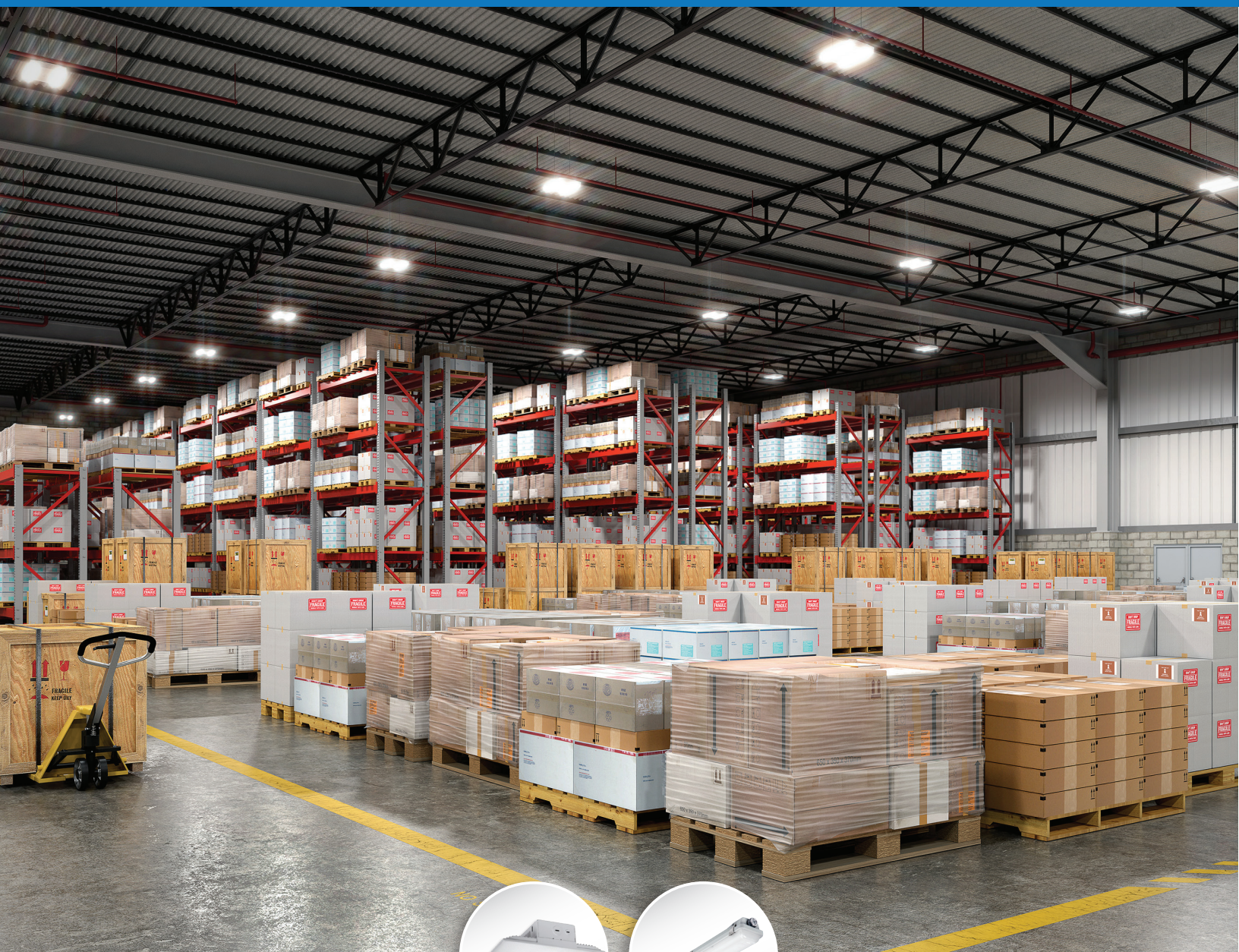
WN Series

WRAP

- 100% clear acrylic prismatic lens provide excellent illumination
- Lift-and-shift lens offers easy re-lamping
- Ends formed with housing for strength and row alignment
- Commercial or residential electronic ballast
- Rotorlock lampholders enable easy lamp engagement



Catalog Number	Description	Replaces Up To	CCT	Voltage	Lumens	Watts	UPC
WN-232A-UNV-EB81-U	4' Surface Commercial Wraparound	2-T8 32W	Lamp Dependant	120/277V	Lamp Dependant	Lamp Dependant	080083518845



High Bays
p. 35-36



Vaportites
p. 36-37

METALUX

INDUSTRIAL LIGHTING

Metalux Industrial offers a selection of economical and energy-efficient high-bay and vaportite lighting solutions designed for a wide variety of applications.

VHB Series

HIGH BAY

- Designed for a wide variety of applications and mounting heights
- Precision designed optics; High impact polycarbonate optical LED lens
- Compact, lightweight design for ease of installation
- Lumen selectable models available
- Solution for spaces utilizing traditional linear fluorescent and HID high bay
- Ideal for industrial, commercial, manufacturing and gymnasium applications



Selectable Lumens

Catalog Number	Description	Replaces Up To	CCT	Voltage	Selectable Lumens	Watts	UPC	DLC Product ID
VHB-1824-W-UNC-L840-CD-MP-U	Compact Linear, WD Distr, Selectable Lumens	400W HID, 6-T5HO 54W	4000K	347-480V	18,000-24,000	126/158	080083191611	PKWWO6XP
VHB-1824-W-UNV-L840-CD-MP-U	Compact Linear, WD Distr, Selectable Lumens	400W HID, 6-T5HO 54W	4000K	120/277V	18,000-24,000	126/158	080083191390	PKWWO6XP

Dedicated CCT & Lumens

Catalog Number	Description	Replaces Up To	CCT	Voltage	Lumens	Watts	UPC	DLC Product ID
VHB-24-W-UNC-L840-CD-MP-U	Compact Linear, WD Distr	400W HID, 6-T5HO 54W	4000K	347-480V	24,000	134	080083827282	PJ92YFP9
VHB-24-W-UNV-L840-CD-MP-U	Compact Linear, WD Distr	400W HID, 6-T5HO 54W	4000K	120/277V	24,000	134	080083827299	PJ92YFP9

LHBS Lensed Selectable

HIGH BAY

- Superior performance: Up to 36,000 lumens and 160 lm/W
- CCT (4000/5000K) and Lumen select for greater flexibility
- Size to Lumen Select: 13" - 12/18K, 14.2" - 18/24K and 19.7" - 24/36K
- Multi-volt 120 thru 277V input, 0-10V dimming driver
- Perfect for industrial, manufacturing, gymnasium and warehouse applications



Catalog Number	Description	Replaces Up To	CCT	Voltage	Lumens	Watts	UPC	DLC Product ID
LHBS-1218-UNV-L84050-U	Lensed, Medium Distr.	8-T8 32W, 4-T5HO 54W	4000K 5000K	120/277V	12,000 18,000	86/ 126W	080083274741	S-J1KSFT
LHBS-1824-UNV-L84050-U	Lensed, Medium Distr.	400W HID, 6-T5HO 54W	4000K 5000K	120/277V	18,000 24,000	119/ 159W	080083275625	S-24YMLJ
LHBS-2436-UNV-L84050-U	Lensed, Medium Distr.	400W HID, 6-T5HO 54W	4000K 5000K	120/277V	24,000 36,000	156/ 246W	080083276141	S-EUK8B9

F-Bay Accessories

Catalog Number	Description	UPC
MMS-OSFHUITW-120V/277V/347V	Modular motion sensor kit	080083590148
AYC-CHAIN/SET-U	V Hooks & 36" Chain Set	080083545704
Y-TOGGLE-10-2PK	Aircraft Cable Y-Toggle 120"	080083259557
HBAYC-CHAIN/SET-U	Hook-style V-Hangers	080083575756
MC12	Modular Cord & Plug	080083552498
MC6	Modular Cord & Plug	623961368455

UHBS Selectable Series

HIGH BAY

- Compact, 13" and 15" round die cast aluminum housing
- Up to 36,000 selectable lumens and 4000K/5000K selectable CCT
- Sensor ready port for quick plug and play install
- 120-347 volt operating range



Catalog Number	Description	Replaces Up To	CCT	Voltage	Lumens	Watts	UPC	DLC Product ID
UHBS-1218-MV-L84050-U	LED Round High Bay	400W HID, 6-T5HO 54W	4000K-5000K	120-347V	12,000-18,000	81/99/120	080083256471	S-PEIA6S
UHBS-2436-MV-L84050-U	LED Round High Bay	400W HID, 6-T5HO 54W	4000K-5000K	120-347V	24,000-36,000	145/194/238	080083256488	S-Z5HGE1

PIR Sensor and Accessories

Catalog Number	Description	UPC
UHBS-SENSOR PK	PIR Sensor, 360 Lens	080083257898
UHBS-SENSOR REMOTE	Sensor Remote Control Accessory	080083260249
UHBS-WG13	13 DIA Wire Guard	080083273348
UHBS-WG15	15 DIA Wire Guard	080083273355

SPHB Selectable Series

HIGH BAY

- 2 Compact, lightweight designs for easy install
- Up to 36,000 selectable lumens and 4000K/5000K selectable CCT
- Sensor Ready port for quick plug and play install
- Great for Industrial, manufacturing, gymnasium, and warehouse



Selectable lumen output and colour temperature with an easy to access toggle switch



Catalog Number	Description	Replaces Up To	Selectable CCT	Voltage	Selectable Lumens	Watts	UPC	DLC Product ID
SPHB-1224SE-M-UNV-L84050-CD-SP1-U	Med. Distr	400W HID, 6-T5HO 54W	4000K-5000K	120-277V	12,000-24,000	82/123/166	080083289264	Pending
SPHB-2436SE-M-UNV-L84050-CD-SP1-U	Med. Distr	400W HID, 6-T5HO 54W	4000K-5000K	120-277V	24,000-36,000	162/209/251	080083289288	Pending

APVT-S Selectable

VAPORTITE

- Selectable CCT (3500/4000/5000K) and Lumen select for greater flexibility
- 4ft version in stock : 3000/4500/8000 lumens
- Durable polycarbonate housing with integral metal gear tray
- High-Performance efficacy up to 147 lm/W
- Ideal applications include warehouse, manufacturing, and light industrial



Catalog Number	Description	Replaces Up To	CCT	Voltage	Lumens	Watts	UPC
4APVTLD-SL3C3	VT 4' Selectable Vaportight	2-T8 32W, 1-T5HO 54W	3500K-5000K	120/277V	3,000-6,000	21-46	080083266371

VT Series VAPORTITE

- Contemporary surface-mount fixture featuring rugged and durable construction
- Sealed and gasketed, reinforced fiberglass housing with a high impact lens
- Internal fasteners and tethers provide maximum protection and rigidity
- Optical performance for interior and exterior applications; IP65 certified; NSF Listed
- Ideal for parking garages, food processing, canopy, manufacturing and complex environments



Catalog Number	Description	Replaces Up To	CCT	Voltage	Lumens	Watts	UPC	DLC Product ID
4VT2-LD5-6-DR-UNV-L835-CD1-WL-U	4' Fixed Output	3-T8, 1-T5HO	3500K	120/277V	6,197	50	080083146598	P1R4U9WP

Good

Better

Best



		LHBS	VHB	SPHB	UHBS
APPLICABILITY ¹	Big Box Retail	★	★	★★	★★
	Sports / Recreation	★★	★★	★★	★★
	Warehouses	★★★	★★★	★★★	★★
	Manufacturing	★★	★★	★★★	★★
	Cold Storage	★	★★★	★★★	★
	Complex Environments		★	★	★★

FEATURES / PERFORMANCE	Lumen Range	12,000 - 36,000	9,000 - 24,000	12,000 - 36,000	12,000-36,000
	Selectable Lumens	12,000-18,000 or 18,000-24,000 or 24,000-36,000	12,000 - 15,000 or 18,000 - 24,000	12,000 - 24,000 or 24,000 - 36,000	12,000-18,000 or 24,000-36,000
	Efficacy (Max)	160 lm/W	147 lm/W	158 lm/W	137 lm/W
	CRI	80	70, 80, 90	80	80
	Distribution	M	N, W	M	M
	Sizes	13" x 2' & 4'	< 2'	12" x 18" or 12" x 36"	13" & 15"
	Housing ²	CRS	CRS / Extruded	CRS	Diecast
	Lensing	Acrylic	Polycarbonate	Polycarbonate	Polycarbonate
	Uplight	None	None	None	None
	Life (@ 60K hrs)	L84	L83	L86	L91
	Ambient Range	-20C to 50C	-40C to 40C	-40C to 45C	-40C to 45C
	Emergency	None	Remote	Optional	None
	Ratings	Damp	Damp	Damp, IP5X	IP65, NSF, Wet Location
	DLC	Premium	Standard, Premium	Premium	Standard

INTEGRATED CONTROLS	Basic Occupancy		✓	✓	
	Stand Alone Daylight / Occupancy		✓	✓	✓
	WaveLinx		✓	✓	

Notes: 1. ★★★ = high applicability, ★★ = medium applicability, ★ = low applicability, blank = non-applicable
2. CRS=Cold-rolled Steel, Extruded= Extruded Aluminum, Diecast=Diecast Aluminum.



iO
p. 39

ARCHITECTURAL COMMERCIAL LIGHTING

iO delights architects by offering simple designs that create comfort with a perfect balance of beautiful aesthetics, superior performance and ease of installation.

CovSelect Architectural Cove Light iO

- Cove lighting fixture with integral driver for interior applications
- Field-selectable CCTs: 2700K, 3000K, 3500K, 4000K; 80 CRI
- Field-selectable lumen output: 350 lumens/ft and 700 lumens/ft
- Up to 200 ft run from a single power drop
- Rated for interior / damp installations
- Simplifies install by eliminating remote drivers and field assembly needed for tape light



Catalog Number	Description	Replaces Up To	Selectable CCT	Voltage	Selectable Lumens	Watts	UPC	Energy Star ID
CS-SL-8SCT-120-ID-UNV-W-SA-STD-4F	4' Linear Fixture	32W T8, 40W T12	2700K-4000K	120-277V	350 lm/ft, 700 lm/ft	21	080083267095	2401210
CS-SL-8SCT-120-ID-UNV-W-SA-STD-1F	1' Linear Fixture	32W T8, 40W T13	2700K-4000K	120-277V	350 lm/ft, 700 lm/ft	6	080083267507	2401209

Power Harness/Control Modules (1 required for each power drop)

Catalog Number	Description	UPC
CS-10V-STD	Standard Power Harness	080083267088

Accessories (optional)

Catalog Number	Description	UPC
CS-JHARN02-006	6" Jumper accessory	080083267071
CS-JHARN02-012	12" Jumper accessory	080083267064
CS-JHARN02-036	36" Jumper accessory	080083267057
CS-JHARN02-144	144" Jumper accessory	080083267040



DREAM. EXPERIMENT. PLAN.

A more powerful way to design.

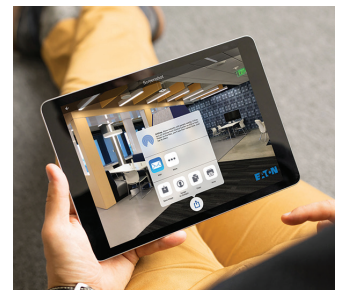
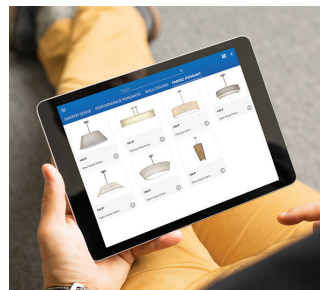
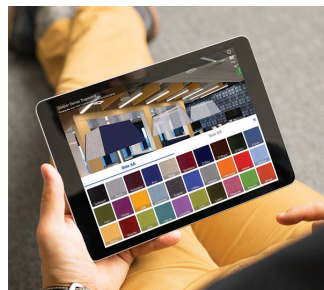


Light ARchitect™

► See your space in a new light with augmented reality

We've taken the guesswork out of lighting design with Light ARchitect, an augmented reality mobile app that lets you instantly visualize light fixtures in your space.

- Browse state-of-the-art light LED fixtures and choose the ones you want to see in your space
- Adjust the fixture's finish, lumen output, mounting height, colour temperature and more
- Virtually turn lights on to get the full effect
- Take screenshots to share and email to clients or colleagues



Light ARchitect is free and available for iOS and Android devices

Download **Light ARchitect**



cooperlighting.com/lightarchitect



Simple. Secure. Scalable.

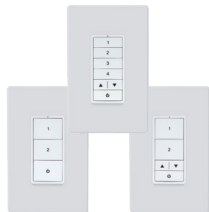
WaveLinx LITE is your out-of-the-box functionality app based smart digital lighting system that helps you save energy and manage your site lighting designed for applications that require:

- Standalone/Grouped Occupancy Sensing
- Manual/Personal Dimming Control
- Daylighting

WaveLinx LITE product categories:



Sensors



Control Stations



Control Modules

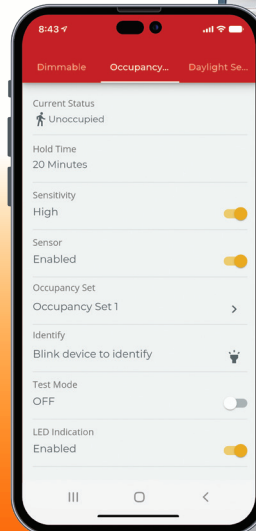


Software & Apps

A secure mobile application provides the ability to customize installations for office, education, warehouse, and parking garage applications.



SCAN for more
WaveLinx LITE
information



WaveLinx LITE app
for standalone spaces
with wireless devices

Communicates with the
LITE devices directly
using the mobile device
Bluetooth radio.



Cruze ST Recessed with WaveLinx LITE TROFFER

- Wireless integrated sensors provide standalone operation that meets code
- Simple set up of the wireless integrated sensors via the mobile app
- Latch-less design provides clean architectural look; Ribbed, frosted acrylic lens
- High-performance LED system with advanced light distribution
- Ideal choice for commercial, institutional and healthcare facilities



Catalog Number	Description	Replaces Up To	CCT	Voltage	Lumens	Watts	UPC	DLC Product ID
22CZ2-34HE-UNV-L835-CD1-WAB-U	2'x2', Troffer	3-T8, 2-T5HO	3500K	120-277V	3,426	24	080083199402	P3AJU020
22CZ2-39-UNV-L840-CD1-WAB-U	2'x2', Troffer	3-T8, 2-T5HO	3500K	120-277V	3943	31	080083251209	P0AXJUK1
22CZ2-44-UNV-L840-CD1-WAB-U	2'x2', Troffer	3-T8, 2-T5HO	4000K	120-277V	4,470	33	080083282937	PKWC1G2R
24CZ2-40-UNV-L835-CD1-WAB-U	2'x4', Troffer	2-T8 32W, 2-T5 54W	3500K	120-277V	4178	30.4	080083251216	POHGX08Y
24CZ2-40HE-UNV-L835-CD1-WAB-U	2'x4', Troffer	2-T8 32W, 2-T5 54W	3500K	120-277V	4144	31	080083199419	PPC283QT
24CZ2-50-UNV-L840-CD1-WAB-U	2'x4', Troffer	2-T8 32W, 2-T5 54W	4000K	120-277V	5015	39.6	080083251230	PI0YCHQ9

WTK Wireless Tilemount WaveLinx LITE SENSOR KIT

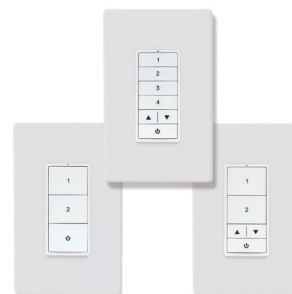
- Enable 0-10V luminaires to be controlled by the WaveLinx LITE system
- 120-277VAC with 3 amp relay and 0-10V continuous dimming
- Mounting heights of 8 to 15ft (2.4 to 4.5m)
- Provides PIR and photocell capabilities
- Installs into 1/2-3/4" (12-19mm) ceilings or octagonal junction boxes



Catalog Number	Description	Finish	Voltage	UPC	DLC Product ID
WTK	WaveLinx LITE Tilemount Sensor Kit	White	120-277V	080083293261	Pending

Wallstation WaveLinx LITE WALLSTATION

- Multi-scene selection, and zone programmable
- Suitable for standard single or multi-gang NEMA wall box
- Line voltage (120-277VAC) and battery powered options
- Configurable through software - no physical adjustments



Line Voltage Wallstation

Catalog Number	Description	Finish	Voltage	UPC	DLC Product ID
WWL3-W	Wallstation, 3 Button	White	120-277V	080083283170	Pending
WWL3-RL-W	Wallstation, 3 Button Raise / Lower	White	120-277V	080083282449	Pending
WWL5-RL-W	Wallstation, 5 Button Raise / Lower	White	120-277V	080083283149	Pending

Wireless Battery Powered Wallstation

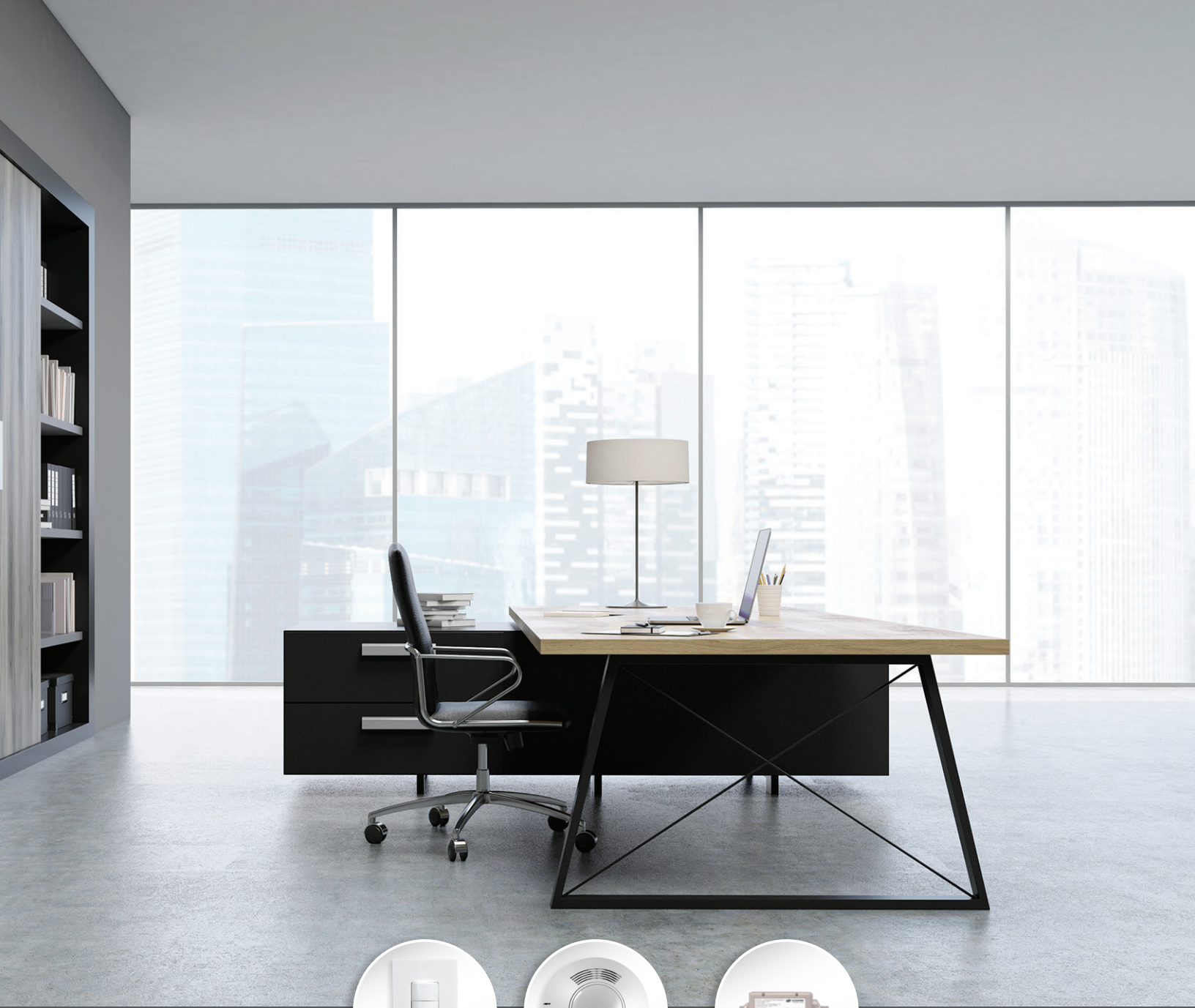
Catalog Number	Description	Finish	Voltage	UPC	DLC Product ID
WWBL3-W	Wallstation, 3 Button,	White	N/A	080083256600	Pending
WWBL3-RL-W	Wallstation, 3 Button Raise / Lower	White	N/A	080083256198	Pending
WWBL5-RL-W	Wallstation, 5 Button Raise / Lower	White	N/A	080083256181	Pending

RSP WaveLinx LITE SWITCHPACK

- 20A rated relay
- 0-10v dimming control
- Plenum-rated design with easy junction box mounting
- Universal voltage input (120, 277 and 347 VAC)
- Suitable for plug load control



Catalog Number	Description	Voltage	UPC
RSP-L-010-347	WaveLinx LITE Wireless, Dimming	120/347V	080083288229



Switches/Dimmers
p. 45



Sensors
p. 45-47



Switchpacks
p. 47

GREENGATE

CONTROLS

Meet lighting codes, save energy and reduce installation costs for all of your lighting and control needs with Greengate switches, dimmers and sensors.

WBSD 0-10V Decorator Dimmer

WALL SWITCH

- Provides a full-range of linear-slide dimming control of 0-10V compatible light sources
- Allows user to return to previous light level when turning lights ON
- Can be used in single-pole (1 location) and 3-way (multi-location) applications
- Neutral wire is not required for installation of device
- Ideal for light commercial applications; Compatible with decorator style devices and wallplates



Catalog Number	Description	Finish	Voltage	UPC
WBSD-010DEC-C1	0-10V Decorator Dimmer	White, Ivory, Almond	120V/277V	080083735266
WBSD-010SLD-W	0-10V Slide Dimmer	White	120V/277V	080083735280

OSW 0-10V Dimmer with Dual Tech Sensor

SENSOR

- 3-in-1 solution that combines functionality of a switchpack, a sensor and a 0-10V dimmer
- Saves labour costs, reduces installation time and meets energy codes and standards
- Ultrasonic occupancy (US) and passive infrared (PIR) sensing; Daylight harvesting
- Can be used in single-pole (1 location) as well as 3-way (multi-location) applications
- Compatible with Cooper Lighting Solutions' decorator style devices and wallplates



Catalog Number	Description	Finish	Voltage	Watts	Detection Type	Coverage	UPC
OSW-D-010-W	0-10V Decorator Dimmer	White	120/277V	960 / 2200	PIR and Ultrasonic	1,000 sq ft.	080083816071
OSW-P-010-W	0-10V Wallbox Dimmer, Sensor	White	120/277V	1200 / 2200	PIR	1,000 sq ft.	080083758661
OSW-P-0801-120-W	Sensor PIR, 120VAC (Grd Req)	White	120V	600	PIR	800 sq ft.	32664729829
OSW-P-1001-MV-W	Sensor PIR, 120/277 (Grd Req)	White	120/277V	2200	PIR	1,000 sq ft.	32664729775

ONW Switch with Sensor

SENSOR

- Passive Infrared (PIR) single level occupancy sensing switch for motion sensing control
- Also a conventional wall switch; Designed for energy savings and convenience
- Detects motion from a heat-emitting source (such as a person entering a room) within its field-of-view and automatically switches lights ON
- Neutral and non-neutral wiring options for installation; Ideal for retrofit applications



Catalog Number	Description	Finish	Voltage	Watts	Detection Type	Coverage	UPC
ONW-P-1001-MV-W	PIR Wall Sensor	White	120/277V	1,200W/2,200W	PIR	1,000 sq ft.	080083523863
ONW-D-1001-MV-W	Dual Tech Wall Sensor	White	120/277V	1,200W/2,200W	PIR and Ultrasonic	1,000 sq ft.	080083524709

OAC Ceiling Mount Dual Tech SENSOR

- Combines ultrasonic and Passive Infrared (PIR) technologies, eliminates false deactivations
- MicroSet self-adjusting technology provides an adaptive and airflow tolerant technology
- Ideal for spaces that have increased airflow due to higher occupant levels
- Drastically simplifies and reduces installation and adjustment time
- Available in line-voltage and low-voltage versions; Compatible with SP20 switchpacks



Catalog Number	Description	Finish	Voltage	Watts	Detection Type	Coverage	UPC
OAC-DT-2000-MV	DT Ceiling Mount, Line Voltage	White	120-347V	1,200 - 2,700	PIR and Ultrasonic	2,000 sq ft.	080083579426
OAC-DT-2000	DT Ceiling Mount, Low Voltage	White	10-30VDC	N/A	PIR and Ultrasonic	2,000 sq ft.	080083579266
OAC-DT-2000-R	DT Ceiling Mount, Isolated Relay	White	10-30VDC	N/A	PIR and Ultrasonic	2,000 sq ft.	080083702077
OAC-DT-1000	DT Ceiling Mount, Low Voltage	White	10-30VDC	N/A	PIR and Ultrasonic	1,000 sq ft.	080083579242
OAC-DT-1000-R	DT Ceiling Mount, Isolated Relay	White	10-30VDC	N/A	PIR and Ultrasonic	1,000 sq ft.	080083702060
OAC-P-1500-MV	MicroSet Ceiling Sensor w/Daylight Sensor	White	120-347V	N/A	PIR	1,500 sq ft.	080083579402

Wall/Corner Dual Tech Low Voltage SENSOR

- MicroSet self-adjusting time delay and sensitivity
- Optional built-in light level sensor
- Optional BAS/HVAC isolated relay
- NEMA WD 7 Guide robotic method utilized to verify coverage patterns
- Manual On feature



Catalog Number	Description	Finish	Voltage	Watts	Detection Type	Coverage	UPC
OAWC-DT-120W	Fixture Mount Sensor	White	0-30VDC	N/A	PIR	1,200 sq ft.	080083579563



OEF High Bay Fixture Mount Sensor

- Fixture-mount high bay/low bay occupancy sensor with integrated photocell
- Provides 0-10V control and 1-100% continuous dimming
- 2 interchangeable 360° high bay and low bay lenses; specifically designed for LED fixture control
- Easy to program; Quicksnap feature for easy installation
- Suitable for use in standard and cold storage applications



Catalog Number	Description	Finish	Voltage	Watts	Detection Type	Coverage	UPC
OEF-P-010V-MV	Fixture Mount Sensor	White	120/277V	1200	PIR	1,500 sq ft.	080083758104

Heavy Duty SWITCHPACKS

- Features robust and reliable mechanical latching relays, exclusive fail-safe circuitry, daylight harvesting, bi-level switching and is configurable for energy code requirements
- The switchpack is specifically designed to handle high inrush electronic ballast loads and offer unmatched durability and service
- Auto-ON / Auto-OFF with local switch



Catalog Number	Description	Finish	Voltage	Watts	UPC
SP15-347	Standard Heavy Duty	Raw Finish	347V	5200	080083503230
SP20-MV	Standard Heavy Duty	Raw Finish	120/277V	2400 - 5400	080083503223
SP20-RD4	Heavy duty 20A-24VDC	Raw Finish	120/277V	2400-5540	080083815869





Wall Mounts
p. 49, 52



Floodlight
p. 50, 53



Ceiling Mount
p. 50



Area/Site
p. 51-52

LUMARK & LUMARK AP OUTDOOR LED LUMINAIRES

Lumark brands offer a wide selection of high-quality product solutions that provide market-leading ease of installation, superior area safety, and maximum energy savings in commercial and industrial spaces.

LUMARK AP WALL MOUNTS

Lumark AP provides high-value outdoor lighting products that are in stock and supported with decades of experience and expertise in the industry.



ASWP Adjustable Slim Wall Pack WALL MOUNT

- Adjustable slim wall pack available in small and medium sizes
- 3-colour selectable CCT: 3000K, 4000K, 5000K; 70CRI
- Lumen packages range from 2,100-10,200 lumens
- Internal toggle switches to easily adjust luminaire CCT and lumens
- Integrated button type photocontrol for dusk-to-dawn operation



Selectable CCT & Lumens

Catalog Number	Description	Finish	Replaces Up To	Selectable CCT	Voltage	Selectable Lumens	Watts	UPC	DLC Product ID
ASWPLED1S	Adjustable Slim Wall Pack	Bronze	150W HID	3000K-5000K	120-347V	2,000-4,000	15-30	080083265169	S-YWC5DG
ASWPLED2S	Adjustable Slim Wall Pack	Bronze	250W HID	3000K-5000K	120-347V	5,500-10,000	40-75	080083265183	S-9DIVKW

Note: DLC Premium items are noted in bold.

WPM Wall Pack Luminaire WALL MOUNT

- LED wall pack available with fully selectable configurations
- Die-cast aluminum housing with hinged, removable die-cast aluminum door
- Heat and impact resistant borosilicate glass lens
- Energy and maintenance savings up to 89%
- Ideal for pathway illumination, building entrances, vehicle ramps, schools, tunnels, stairways and loading docks



Catalog Number	Description	Finish	Replaces Up To	Selectable CCT	Voltage	Selectable Lumens	Watts	UPC	DLC Product ID
WPMLED15S	Medium LED Wall Pack	Bronze	150W HID	3000K-5000K	120-347V	3,977-7,535	29-59	080083176144	PLAP4BWH9V52
WPMLED25S	Medium LED Wall Pack	Bronze	250W HID	3000K-5000K	120-347V	9,779-12,829	72-101	080083176168	PLCDOB65Z8EN

LUMARK AP FLOODLIGHT | CEILING MOUNT

LSF Selectable Flood FLOODLIGHT

- Available in 3 housing sizes and multiple lumen packages
- 3-colour selectable CCT: 3000K, 4000K, 5000K; 70CRI
- Lumen packages ranging from 1,700-20,000 lumens
- Knuckle, slipfitter, trunnion and yoke mounting types
- Integrated button type photocontrol for dusk-to-dawn operation



Catalog Number	Description	Finish	Replaces Up To	Selectable CCT	Voltage	Selectable Lumens	Watts	UPC	DLC Product ID
LSF25-KN-PC	Selectable Flood, Knuckle	Bronze	150W HID	3000K-5000K	120-347V	1,700-4,000	11-25	080083267705	S-W43YTM
LSF25-YK-PC	Selectable Flood, Yoke	Bronze	150W HID	3000K-5000K	120-347V	1,700-4,000	11-25	080083267767	S-W43YTM
LSF65-KN-PC	Selectable Flood, Knuckle	Bronze	250W HID	3000K-5000K	120-347V	5,000-10,000	25-65	080083267729	S-5HK1XN
LSF65-YK-PC	Selectable Flood, Yoke	Bronze	250W HID	3000K-5000K	120-347V	5,000-10,000	25-65	080083267781	S-5HK1XN
LSF120-SF-PC	Selectable Flood, Slipfitter	Bronze	470W HID	3000K-5000K	120-347V	9,000-20,000	50-120	080083267743	S-M4YHAF
LSF120-TR-PC	Selectable Flood, Trunnion	Bronze	470W HID	3000K-5000K	120-347V	9,000-20,000	50-120	080083267804	S-M4YHAF

Note: DLC Premium items are noted in bold.

CLCS Canopy Luminaire CEILING MOUNT

- LED canopy available with fixed output or selectable configurations
- 3-colour selectable CCT: 3000K, 4000K, 5000K
- High-performance, energy-efficient illumination
- Energy and maintenance savings up to 86% versus HID solutions
- Ideal for new or existing spaces including bank, retail, drive-thru, covered sidewalks and hospital entryways



Selectable CCT & Lumens

Catalog Number	Description	Finish	Replaces Up To	Selectable CCT	Voltage	Selectable Lumens	Watts	UPC	DLC Product ID
CLCS17S	Small LED Canopy	Bronze	175W HID	3000K-5000K	120-277V	5,323-7,939	39-56	080083160006	P5MUAJIY, P5S4B75K
CLCS40S	Large LED Canopy	Bronze	400W HID	3000K-5000K	120-277V	12,614-17,427	91-123	080083160020	PUT80LSK, PPEWK64B

LAS Luminaire

AREA/SITE

- Automatic dusk-to-dawn area lighting with included twistlock photocontrol with the UNV models
- 10-position, field-selectable lumens across 2 die-cast aluminum housing sizes
- Energy and maintenance savings up to 79% versus HID solutions up to 79%
- Pole mount arm or adjustable slipfitter mounting arm included
- Ideal parking lots, walkways, building areas and other outdoor areas



Catalog Number	Description	Finish	Replaces Up To	CCT	Voltage	Selectable Lumens	Watts	UPC	DLC Product ID
LAS45S-T3	T3 Distr., Adjustable Slipfitter Arm	Bronze	450W HID	4000K	120-277V	4,900 - 20,000	30-150	080083155804	P1T4HG08
LAS45S-T3-HV	T3 Distr., Adjustable Slipfitter Arm	Bronze	450W HID	4000K	347-480V	4,900 - 20,000	30-150	080083155927	P1T4HG08
LAS45S-T4	T4 Distr., Adjustable Slipfitter Arm	Bronze	450W HID	4000K	120-277V	4,900 - 20,000	30-150	080083155828	PJZTZ423
LAS45S-T4-HV	T4 Distr., Adjustable Slipfitter Arm	Bronze	450W HID	4000K	347-480V	4,900 - 20,000	30-150	080083155941	PJZTZ423
LAS45S-T5	T5 Distr., Adjustable Slipfitter Arm	Bronze	450W HID	4000K	120-277V	4,900 - 20,000	30-150	080083155842	PW39PQB3
LAS45S-T5-HV	T5 Distr., Adjustable Slipfitter Arm	Bronze	450W HID	4000K	347-480V	4,900 - 20,000	30-150	080083155965	PW39PQB3
LAS100S-T3	T3 Distr., Adjustable Slipfitter Arm	Bronze	1,000W HID	4000K	120-277V	8,200 - 34,000	48-250	080083155866	PP8AW4F5
LAS100S-T3-HV	T3 Distr., Adjustable Slipfitter Arm	Bronze	1,000W HID	4000K	347-480V	8,200 - 34,000	48-250	080083155989	PP8AW4F5
LAS100S-T4	T4 Distr., Adjustable Slipfitter Arm	Bronze	1,000W HID	4000K	120-277V	8,200 - 34,000	48-250	080083155880	P0CHU9AS
LAS100S-T4-HV	T4 Distr., Adjustable Slipfitter Arm	Bronze	1,000W HID	4000K	347-480V	8,200 - 34,000	48-250	080083156009	P0CHU9AS
LAS100S-T5	T5 Distr., Adjustable Slipfitter Arm	Bronze	1,000W HID	4000K	120-277V	8,200 - 34,000	48-250	080083155903	PMUFIF4F
LAS100S-T5-HV	T5 Distr., Adjustable Slipfitter Arm	Bronze	1,000W HID	4000K	347-480V	8,200 - 34,000	48-250	080083156023	PMUFIF4F

Note: DLC Premium items are noted in bold.

HV models supplied with shorting cap. Use NEMA 3-PIN twistlock receptacle photocontrol that matches the input voltage used (either 347V or 480V) as desired.

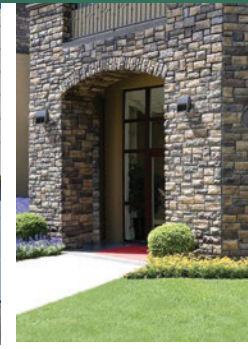
Catalog Number	Description	Finish	Replaces Up To	CCT	Voltage	Selectable Lumens	Watts	UPC	DLC Product ID
LAS45P-T3	T3 Distr., Pole Mount Arm	Bronze	450W HID	4000K	120-277V	4,900 - 20,000	30-150	080083248360	P1T4HG08
LAS45P-T3-HV	T3 Distr., Pole Mount Arm	Bronze	450W HID	4000K	347-480V	4,900 - 20,000	30-150	080083248728	P1T4HG08
LAS45P-T4	T4 Distr., Pole Mount Arm	Bronze	450W HID	4000K	120-277V	4,900 - 20,000	30-150	080083248384	PJZTZ423
LAS45P-T4-HV	T4 Distr., Pole Mount Arm	Bronze	450W HID	4000K	347-480V	4,900 - 20,000	30-150	080083248742	PJZTZ423
LAS45P-T5	T5 Distr., Pole Mount Arm	Bronze	450W HID	4000K	120-277V	4,900 - 20,000	30-150	080083248704	PW39PQB3
LAS45P-T5-HV	T5 Distr., Pole Mount Arm	Bronze	450W HID	4000K	347-480V	4,900 - 20,000	30-150	080083248766	PW39PQB3
LAS100P-T3	T3 Distr., Pole Mount Arm	Bronze	1,000W HID	4000K	120-277V	8,200 - 34,000	48-250	080083248780	PP8AW4F5
LAS100P-T3-HV	T3 Distr., Pole Mount Arm	Bronze	1,000W HID	4000K	347-480V	8,200 - 34,000	48-250	080083248841	PP8AW4F5
LAS100P-T4	T4 Distr., Pole Mount Arm	Bronze	1,000W HID	4000K	120-277V	8,200 - 34,000	48-250	080083248803	P0CHU9AS
LAS100P-T4-HV	T4 Distr., Pole Mount Arm	Bronze	1,000W HID	4000K	347-480V	8,200 - 34,000	48-250	080083248865	P0CHU9AS
LAS100P-T5	T5 Distr., Pole Mount Arm	Bronze	1,000W HID	4000K	120-277V	8,200 - 34,000	48-250	080083248827	PMUFIF4F
LAS100P-T5-HV	T5 Distr., Pole Mount Arm	Bronze	1,000W HID	4000K	347-480V	8,200 - 34,000	48-250	080083248889	PMUFIF4F

Note: DLC Premium items are noted in bold.

HV models supplied with shorting cap. Use NEMA 3-PIN twistlock receptacle photocontrol that matches the input voltage used (either 347V or 480V) as desired.

LUMARK AP AREA/SITE | WALL MOUNT

Lumark combines value-engineered, specification-grade lighting features with market-leading retrofit installation solutions, to enable contractors to get on and off the job quickly and deliver superior illumination coverage.



CTKR Caretaker Luminaire

AREA/SITE

- Rugged die-cast housing for durability in security applications
- Uniform distribution with excellent vertical illumination for maximum light coverage
- Wall/pole-mount bracket and integral slipfitter for versatility in mounting
- Versatile universal mounting plate allows quick and easy installation
- Low-cost, low-maintenance solution for residential street lighting, perimeter area lighting, parking areas, loading platforms, boat docks, access drives or pathways



Catalog Number	Description	Finish	Replaces Up To	CCT	Voltage	Lumens	Watts	UPC	DLC Product ID
CTKR3B	Area site with PC, UNV Mount Arm	Raw	250W HID	4000K	120-277V	9,741	71	080083865413	P3P0FHML
SR-CARETAKER	Small Acrylic Refractor	Clear	N/A	N/A	N/A	N/A	N/A	080083699087	N/A

Note: DLC Premium items are noted in bold.

XTOR Crosstour Luminaire

WALL MOUNT

- Architectural style with super bright, energy-efficient LEDs
- Low-profile, rugged die-cast aluminum construction and stainless steel hardware
- Universal back box with sealed and gasketed optical compartment
- Wall, surface, post, bollard, low-level, inverted, floodlight mounting
- Ideal for multi-use facilities, pathway illumination and building entrances



Catalog Number	Description	Finish	Replaces Up To	CCT	Voltage	Lumens	Watts	UPC	DLC Product ID
XTOR1B	Small Full Cutoff	Carbon Bronze	70W HID	5000K	120-277V	1,418	12	080083777969	PRVAZAR
XTOR2B	Small Full Cutoff	Carbon Bronze	100W HID	5000K	120-277V	2,135	18	080083778225	PGP4FV3
XTOR3B	Small Full Cutoff	Carbon Bronze	150W HID	5000K	120-277V	2,751	26	080083778041	PWFZHYJH
XTOR3B-347V	Small Full Cutoff	Carbon Bronze	150W HID	5000K	347V	2,751	26	080083778386	PWFZHYJH
XTOR4B	Medium Full Cutoff	Carbon Bronze	250W HID	5000K	120-277V	4,269	38	080083778003	PUJ1NXGY
XTOR6B	Large Full Cutoff	Carbon Bronze	320W HID	5000K	120-277V	6,129	58	080083774807	X7BH39
XTOR6BRL	Large Refractive Lens	Carbon Bronze	320W HID	5000K	120-277V	6,225	58	080083774821	N/A
XTOR6BRL-347V	Large Refractive Lens	Carbon Bronze	320W HID	5000K	347V	6,225	58	080083777181	N/A
XTOR8B	Large Full Cutoff	Carbon Bronze	400W HID	5000K	120-277V	8,502	81	080083774814	P5557CRH
XTOR8BRL	Large Refractive Lens	Carbon Bronze	400W HID	5000K	120-277V	8,635	81	080083774852	N/A
XTOR8BRL-347V	Large Refractive Lens	Carbon Bronze	400W HID	5000K	347V	8,635	81	080083777068	N/A
XTOR12BRL	Large Refractive Lens	Carbon Bronze	450W HID	5000K	120-277V	13,458	102	080083779581	PAEAG8NM
XTOR12BRL-347V	Large Refractive Lens	Carbon Bronze	450W HID	5000K	347V	13,458	102	080083778201	PAEAG8NM

LUMARK AP FLOODLIGHT

NFFLD Night Falcon Luminaire FLOODLIGHT

- Cost-effective LED floodlight available in medium or large sizes
- Precision engineered and high-efficiency optics delivers superior uniformity
- Compact, robust die-cast aluminum housing, driver compartment and door
- 6H x 6V NEMA wide distribution
- Ideal for area lighting for security, building facade and signage



Catalog Number	Description	Finish	Replaces Up To	CCT	Voltage	Lumens	Watts	UPC
NFFLD-C25-T	Medium, Trunnion	Carbon Bronze	250W HID	4000K	120-277V	10,530	85	080083801220
NFFLD-C40-S	Medium, Slipfitter	Carbon Bronze	400W HID	4000K	120-277V	16,932	128	080083801206
NFFLD-C40-T-347	Medium, Trunnion	Carbon Bronze	400W HID	4000K	347V	16,932	129	080083801060
NFFLD-C40-T	Medium, Trunnion	Carbon Bronze	400W HID	4000K	120-277V	16,932	128	080083801183
NFFLD-L-C100-T	Large, Trunnion	Carbon Bronze	1,000W HID	4000K	120-277V	33,941	252	080083800902

NHR Night Harrier FLOODLIGHT

- Cutting edge innovated design offering years of maintenance-free service
- 3-colour selectable CCT: 3000K, 4000K, 5000K
- Lumen packages ranging from 5,500-22,000 lumens
- Slipfitter and trunnion mounting types
- Ideal for area lighting such as facade, wall washing, building and sign lighting



Catalog Number	Description	Finish	Replaces Up To	Selectable CCT	Voltage	Selectable Lumens	Watts	UPC	DLC Product ID
NHRS50UT	Trunnion Mount	Bronze	70W to 500W HID	3000K-5000K	120-277V	5,500-22,000	40-155W	080083283903	Pending
NHRS50US	Slipfitter Mount	Bronze	70W to 500W HID	3000K-5000K	120-277V	5,500-22,000	40-155W	080083283910	Pending
NHRS50HT	Trunnion Mount	Bronze	70W to 500W HID	3000K-5000K	347-480V	5,500-22,000	40-155W	080083283927	Pending
NHRS50UT-BPC	Trunnion Mount, Photocontrol	Bronze	70W to 500W HID	3000K-5000K	120-277V	5,500-22,000	40-155W	080083283941	Pending



Area/Site
p. 55, 56



Slim Wall &
Floodlight
p. 55



Floodlight
p. 55



Solar
p. 56

HALO[®]

OUTDOOR LIGHTING

HALO Outdoor provides security and utility lighting for residential and light commercial applications.

ALP Premium Area Light

AREA/SITE

- All-in-1 brightness adjustable and colour selectable premium LED area light
- Includes 3 LED brightness settings using physical switch on the fixture
- Includes 3 light colour temperatures using physical switch on fixture housing
- Dusk to Dawn nighttime on daytime off operation with replaceable Photocell



Catalog Number	Description	Finish	Replaces Up To	CCT	Voltage	Lumens	Watts	UPC	DLC Product ID
ALP90LSFSUNVDGY	Barn Light	Grey	250W HID	3000/4000/5000	120-227V	4450-9300	28-60W	080083260843	S-JDR6ZI

ARFL Series

SLIM WALL AND FLOODLIGHT

- Modern slim flood light with decorative wall mount
- 5 selectable colour temperatures and photocell on/off with included remote control
- Nighttime on daytime off with photocontrol sensor or can be switch activated
- For illuminating areas such as driveways, backyards, garages, or signage.



Catalog Number	Description	Finish	Replaces Up To	CCT	Voltage	Lumens	Watts	UPC	Energy Star ID
ARFL15DBZ	Slim Wall Flood	Bronze	100W INC	2700K-5000K	120V	1500	15	080083260928	2404319
ARFL30DBZ	Slim Wall Flood	Bronze	200W INC	2700K-5000K	120V	3000	30	080083260942	2404320
ARFL50DBZ	Slim Wall Flood	Bronze	350W INC	2700K-5000K	120V	5000	45	080083260966	N/A
ARFL80DBZ	Slim Wall Flood	Bronze	600W INC	2700K-5000K	120V	9000	80	080083260980	2404323

TGS Series

FLOODLIGHT

- Durable die-cast aluminum head with UV resistant polycarbonate lens
- Lumen selectable from two packages: 2,500 Lumens Max or 3,000 Lumens Max (Dimmable)
- Single head (Square only) and Twin head (Square or Round) available
- Maintenance-free LEDs with 70,000 hours of life
- Wall or eave mounted to recessed or surface junction boxes



Catalog Number	Description	Finish	Replaces Up To	CCT	Voltage	Selectable Lumens	Watts	UPC	Energy Star ID
TGS3S401FSRB	Single Head LED Flood	Bronze	180W INC	4000K	120V	1,500/2,200/3,000	26.7	080083913169	2362281
TGS2S402MSRB	Twin Head LED Flood	Bronze	180W INC	4000K	120V	1,500/2,000/2,500	20.9	080083913558	2362292
TGS2S402MSRW	Twin Head LED Flood	White	180W INC	4000K	120V	1,500/2,000/2,500	20.9	080083913572	2362292

SBL Solar Area Light

AREA/SITE

- Off-Grid – completely free to operate, plus no expensive wiring required
- All-in-one design with LED, Solar Panel, and Battery built in for easy installation
- Motion sensor included with 120° detection range and 25' distance
- 3 selectable modes of operation with remote control Including Motion, Dusk-to-dawn, and Motion + Dusk-to-dawn
- Battery runs up to 90mins at maximum output on full charge and lasts up to 500 cycles



**SOLAR
POWERED** | **LED**

Catalog Number	Description	Finish	Replaces Up To	CCT	Voltage	Lumens	Watts	UPC
SBL10A50GY	Motion, Dusk-to-Dawn	Grey	70W HID	5000K	Solar	1000	7W	080083260461
SBL30A50GY	Motion, Dusk-to-Dawn	Grey	100W HID	5000K	Solar	3000	15W	080083260508

SBL Solar Area Light - High Output

AREA/SITE

- Robust die-cast housing for harsh outdoor environments
- Integrated LED with traditional area light design
- Solar panel can be mounted two ways, on top of fixture, or remote mounted and can be mounted up to 25ft
- For illuminating areas such as driveways, backyards, garages, or signage.
- Three selectable modes of operation with remote control
- Premium PIR motion sensor with 180° detection range



**SOLAR
POWERED** | **LED**

Catalog Number	Description	Finish	Replaces Up To	CCT	Voltage	Lumens	Watts	UPC
SBL50A50GY	High Output, Motion, Dusk-to-Dawn	Grey	150W HID	5000K	Solar	5000	33.5W	080083260522
SBL100A50GY	High Output, Motion, Dusk-to-Dawn	Grey	250W HID	5000K	Solar	10000	79.5W	080083260546

HALO Outdoor Accessories

Catalog Number	Description	UPC
EA24	24 Inch Curved Arm Mount	044427000717





Rapid Response



Troffer
p. 59



High Bay
p. 59-60



Strip
p. 60-61

RAPID RESPONSE

METALUX COMMERCIAL INDUSTRIAL

The Rapid Response program is designed to offer the most popular Metalux commercial and industrial lighting products with options delivered to you when you need them.

RAPID RESPONSE

Check out the site and find:

Customizable Metalux commercial and industrial products

Troffers, high bays and strips

Options include: sensors, battery packs, flex, modular wiring, 347V drivers



The Rapid Response PProgram by Cooper Lighting Solutions was designed to keep key ambient, industrial and commercial lighting products flowing to your customers. With Rapid Response, completing projects has never been easier. Rapid Response providesflexibility through customizable options that makes ordering the most popular products simple. Combining easy-to-order modifications and quick-turnaround, Rapid Response allow you to deliver products faster, so projects are completed sooner.

Rules and Guidelines:

- Standard Cooper Lighting Solutions Terms and Conditions for MTO items apply
- Pre-approval required for custom build requests and orders exceeding 60 units
- 10-business day lead time will apply for all Rapid Response orders
- 10-business day window starts from initial acceptance of the order by Cooper in our FLASH order system
- If necessary, longer lead times will be appropriately communicated
- All orders are to be submitted with "QSC-" prefix
- HFR (Hold for Release) orders are not permissible
- Order scheduling to commence only upon receipt of order in our FLASH order system



Contact Patrick Millar for more information

Supply Chain Specialist

mobile: +1 647 278-2528

patrick.millar@cooperlighting.com

RAPID RESPONSE TROFFER | HIGH BAY

Cruze ST Recessed LED Luminaire

Metalux

- Advanced optical control married with contemporary styling
- High performance efficacy greater than 135 lumens per watt
- Standard 0-10V continuous dimming driver
- Shallow depth housing (3.25")
- Latchless design and matte white architectural paint for clean look
- cULus damp location / IC Rated / RoHS compliant / DLC Qualified



SAMPLE NUMBER: QSC-22CZ2-39-UNV-EL7W-L835-CD1-U

RR Code	Rating	Series	LED Lumens Output		Shielding	
QSC =Quick Ship Canada	[Blank] = Standard	22CZ2 = 2' x 2' Cruze 24CZ2 = 2' x 4' Cruze	2' x 2' Standard Efficacy 20 = 2000 Lumens ^{(1),(2)} 24 = 2400 Lumens ^{(1),(2)} 32 = 3200 Lumens ⁽¹⁾ 39 = 3900 Lumens ⁽¹⁾ 44 = 4400 Lumens ⁽¹⁾	2' x 4' Standard Efficacy 30 = 3000 Lumens ⁽¹⁾ 35 = 3500 Lumens ⁽¹⁾ 40 = 4000 Lumens ⁽¹⁾ 45 = 4500 Lumens ⁽¹⁾ 50 = 5000 Lumens ⁽¹⁾ 55 = 5500 Lumens ⁽¹⁾ 60 = 6000 Lumens ⁽¹⁾ 65 = 6500 Lumens ⁽¹⁾	[Blank] = Ribbed Frosted Acrylic Lens (Standard) S = Smooth Frosted Acrylic Lens RDP = Smooth Lens with Round Pattern Insert	
Voltage ⁴		CRI/CCT	Driver Type		Number of Drivers	Packaging
UNV = Universal Voltage 120-277 347V = 347 Volt ⁽⁵⁾		L835 = 3500K L840 = 4000K L850 = 5000K	CD = 0-10V Dimming Driver (10% - 100% Dimming) SLTD = Fifth Light DALI Driver (5%-100% Dimming) ^(c) SLTHD = Fifth Light Dimming Driver (1%-100% Dimming) ^(c)		1 = 1 Driver 2 = 2 Drivers ⁽³⁾ (2' x 4' only)	U = Unit Pack
Options						
Emergency [Blank] = No Emergency EL7W = 7-watt, 120V-277V emergency battery pack installed ⁽⁶⁾ EL14W = 14-watt 120V-277V emergency battery pack installed ⁽⁶⁾		Flex [Blank] = No Flex A3/8-5/18G DIM = 3/8" cable, 3-wire, ground, dimming leads		Sensors [Blank] = No Sensor WPS (formerly WAA) = WaveLinX PRO Wireless Integrated Sensor ^(A) WLS (formerly WAB) = WaveLinX LITE Wireless Integrated Sensor SVPD1 =0-10V Stand-alone Integrated Sensor ^(B)		

NOTES: (1) White tuning not available with this model. (2) Products also available in non-US voltages and frequencies for international markets. (3) 347 versions 6000 lumens and below are available with emergency options, SLTHD emergency battery pack (100 lm/W x 7=700 lumens). IES-format photometry for luminaire under emergency operation available. Battery option increases total height by 1 inch. (A) and step-dim options or sensors are not available. (6) With integral test switch/indicator/laser test. For approximate delivered lumens multiple the lumens per watt of the desired fixture by the wattage of the Consult WaveLinX system pages for additional details and compatibility. (B) Consult SVPD series system pages for additional details and compatibility. (C) Consult Fifth Light system pages for additional details and compatibility.

OHB LED High Bay

Metalux

- Precision designed optical performance
- Offered in both standard and high efficacy versions
- High performance efficacy up to 210 lumens per watt
- Efficient 1-for-1 replacement of linear fluorescent & HID fixtures
- Lumen packages -18K, 24K, 30K
- Narrow, medium, and wide distribution



SAMPLE NUMBER: QSC- OHB-24SE-MFL-UNV-L840-CD-U
Includes V Hangers for rapid installation

RR Code	Series ⁽¹⁾	Lumen Packages / Standard Efficacy		Distribution / Shielding	Voltage ^{(3), (4), (5)}
QSC =Quick Ship Canada	OHB = Optimized High Bay	9SE = 9,000 Lumens 12SE = 12,000 Lumens 15SE = 15,000 Lumens 18SE = 18,000 Lumens	24SE = 24,000 Lumens 30SE = 30,000 Lumens 36SE = 36,000 Lumens	N = Narrow MFL = Medium Frosted MCL = Medium Clear W = Wide NL = No Lens ⁽²⁾	UNV = Universal Voltage 120-277V UNC = Universal Voltage 347/480
CCT/CRI		Driver Type	Options		Packaging
L840 = 80CRI / 4000K L850 = 80CRI / 5000K		CD = 0- 10V Dimming Driver SLTD = Fight Light DALI ⁽⁶⁾	MP = Modular Plug ⁽⁸⁾ Motion Sensors MS = 360° or 180° Motion Sensor Installed, (specify voltage) ^{(7), (8), (9)} SVPD3 = Integrated Occupancy and Daylight Dimming Sensor, 1200 sq. ft. coverage ^{(7), (9)} OEFP010VMV =Occupancy Sensor with Integrated Photocell ^{(7), (8), (10)} ZW-SWPD3 = Integrated WaveLinX Wireless Sensor, 1200 sq ft. coverage ^{(7), (9)} WLS4 =WaveLinX Lite Wireless Integrated Sensor, 15'-40' Mounting Height ^{(7), (9), (11)}		U = Unit Pack

NOTES: (1) DesignLights Consortium® Qualified and classified for both DLC Standard and DLC Premium refer to www.designlights.org for details. (2) Voltage must be specified when ordering with plugs or emergency drivers. (3) When ordering sensor or EBP/TD option, specify as UNV (for 120V or 277V), 347V or 480V. (4) Ambient temperatures limited to 40C when using emergency, sensors, or SLTD in conjunction with 347V or 480V. (5) Sensor or UNC not available in conjunction with SLTD driver. (6) When ordering sensor or EBP/TD option, specify as UNV (for 120V or 277V), 347V or 480V. (7) When ordering sensor or EBP/TD option, specify as UNV (for 120V or 277V), 347V or 480V. (8) UNV and 347V only. (9) Sensor option not available for 36K lumen package with 347V or 480V. (10) Sensor option not available for 36K lumen package with 480V. (11) WaveLinX Lite devices are not currently compatible with the WaveLinX Pro Wireless Area Controller.

RAPID RESPONSE HIGH BAY | STRIP

VHB LED High Bay Series

Metalux

- Compact, lightweight design for ease of installation
- High Impact Polycarbonate optical lens
- 4 lumen packages available (12,000, 15,000, 18,000 and 24,000)
- High-Performance efficacy up to 133 lm/W
- Occupancy and daylight sensor for added savings
- Lumen Maintenance – L82 @ 60,000 hours



SAMPLE NUMBER: QSC-VHB-12-W-UNV-L840-CD1-U

RR Code	Series ⁽¹⁾	LED Lumen Output	Distribution	Shielding	Voltage ⁽³⁾	CCT
QSC =Quick Ship Canada	VHB = LED High Bay	9 =9,000 Lumens 12 =12,000 Lumens 15 =15,000 Lumens 18 =18,000 Lumens 24 =24,000 Lumens ⁽²⁾	N = Narrow (Aisle) W = Wide (General)	[Blank] = High Impact Polycarbonate Lens	UNV = Universal Voltage 120-277 UNC = Universal Voltage 347/480 ⁽²⁾	L840 = 4000K L850 = 5000K
Driver Type		Options	Motion Series			Packaging
CD = 0-10V Dimming Driver SLTD = Fifth Light DALI (not available in 24,000 lumens)		MP = Modular Power Receptacle (used for all Cord or Cord and Plug options) ⁽⁴⁾	MS = 360° or 180° Motion Sensor Installed, (specify voltage) ^{(7), (8), (11)} SVPD3 = Integrated occupancy and daylight dimming sensor, 1200 sq. ft. coverage ^{(7), (8), (9), (10)} ZW-SWPD3 = Integrated Wavelinx Wireless Sensor, 1200 sq ft.coverage ⁽¹⁰⁾ WLS4 =WaveLinx Lite Wireless Integrated Sensor 15'-40' Mounting Height			U = Unit Pack

NOTES: (1) DesignLights Consortium® Qualified and classified for both DLC Standard and DLC Premium refer to www.designlights.org for details. (2) Y-toggle mounting is required when installing the VHB 24K lumen combined with UNC, 347V, 480V, and a motion sensor. (3) Voltage must be specified when ordering accessory cord and plug. (4) Requires use of MC or MPC cord accessories. (5) When ordering MS, SVPD3, or LWR option, specify as UNV (for 120 or 277V), or 347V, or 480V. (6) SVPD3 sensor rated for -25°C to 55°C ambient. (7) When ordering sensor, specify as UNV (for 120 or 277V), or 347V, or 480V. (8) Y-toggle mounting is required when installing the VHB 24K lumen combined with UNC, 347V, 480V, and a motion sensor. (9) SVPD3 sensor rated for -25°C to 55°C ambient. (10) UNV and 347V only. (11) Sensor option not available for 36K lumen package with 480V.

SNX Series Base

Metalux

- Standard (SL) and High lumen/High Efficacy (HL) packages
- Three CCT and Lumen selectable options available
- Up to 22,000 lumen and 176 LPW
- 80 and 90CRI option for superior colour quality
- Standard with 0-10V dimming driver (10% standard, 1% optional)



SAMPLE NUMBER: 4SNX-48SL-UNV-L935-CD1-BLK-U

RR Code	Length	Series	Standard Nominal Lumen Packages ⁽⁴⁾	Voltage ⁽²⁾
QSC =Quick Ship Canada	2 = 2 ft. 4 = 4 ft. 8T = 8 ft.	SNX =Commercial LED Strip ⁽¹⁾	4 ft. Base SL3, 20SL, 22SL, 26SL, 31SL, 33SL, 37SL, 41SL, 45SL, 48SL, 51SL, 57SL, 60SL, 63SL, 67SL, 74HL, 81HL, 84HL, 87HL, 90HL, 93HL, 100HL, 104HL 8 ft. Base SL3, 40SL, 44SL, 52SL, 62SL, 66SL, 74SL, 82SL, 90SL, 96SL, 102SL ⁽⁵⁾ , 114SL ⁽⁵⁾ , 120SL ⁽⁵⁾ , 126SL ⁽⁵⁾ , 134SL ⁽⁵⁾ , 148HL ⁽⁵⁾ , 162HL ⁽⁵⁾ , 168HL ⁽⁵⁾ , 174HL ⁽⁵⁾ , 180HL ⁽⁵⁾ , 186HL ⁽⁵⁾ , 200HL ⁽⁵⁾	UNV = Universal Voltage 120-277 347 = 347V 480 = 480V ⁽³⁾
Options				
Emergency ^{(3), (6)} EL7W =7-watt 120V-277V emergency battery pack ⁽⁷⁾ EL10W =10-watt 120V-277V emergency battery pack ⁽⁷⁾ EL14W =14-watt 120V-277V emergency battery pack ⁽⁷⁾ EL10WSD =10W emergency battery pack with self-diagnostic installed ^{(7), (8)} EL14WSD =14W emergency battery pack with self-diagnostic installed ^{(7), (8)} Sensor Location MID =Mid-row ⁽¹⁶⁾				
Wiring ^{(10), (11)} PI =Wiring Plug-in Option ⁽¹³⁾ CPI =Crossover Plug-in Option ⁽¹³⁾ PC6/120 =(NEMA 5-15P) 6 ft. Cord with NEMA Straight Plug PC6/277 =(NEMA L7-15P) 6 ft. Cord with NEMA Twist Plug C6(1) =1 Circuit, 6 ft. Cord no Plug C3(1) =1 Circuit, 3 ft. Cord no Plug Sensor ⁽⁶⁾ [Blank] =No Sensor WPS (formerly WAA) =WaveLinx PRO Wireless Integrated Sensor ^(A) WLS (formerly WAB) =WaveLinx LITE Wireless Integrated Sensor ^(B) SVPD2 =Integrated occupancy and daylight dimming sensor, 900 sq. ft. coverage ⁽⁹⁾ ZW-SWPD3 =Integrated Wavelinx Wireless Sensor, 1200 sqft. coverage ^{(12), (8)}				
Driver Type		Number of Drivers		Packaging
CD =0-10V Dimming Driver (10%-100% Dimming) HCD =0-10V Dimming Driver (1%-100% Dimming) SLTD =Fifth Light (DALI) Driver ⁽¹⁵⁾		1 = 1 Driver 2 = 2 Drivers		U = Unit Pack

RAPID RESPONSE STRIP

SNX Series Lensed Strip

Metalux

- Standard (SL) and High lumen/High Efficacy (HL) packages
- Three CCT and Lumen selectable options available
- Up to 22,000 lumen and 176 LPW
- Square, Round and Flat Lens
- Standard with 0-10V dimming driver (10% standard, 1% optional)



SAMPLE NUMBER: 4SNX-48SL-LN-UNV-L835-CD1-U

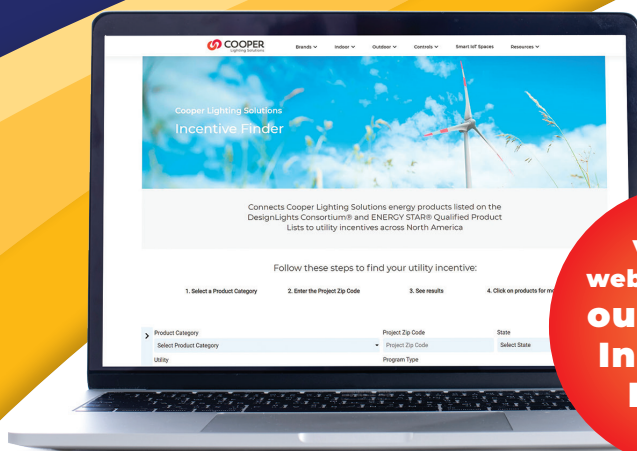
RR Code	Length	Series	Lens	Voltage ⁽²⁾		
QSC =Quick Ship Canada	2 = 2 ft. 4 = 4 ft. 8T = 8 ft.	SNX =Commercial LED Strip ⁽¹⁾	Round LC = Clear Lens LN = Semi-Frost Lens - Narrow LW = Full Frost Lens - Wide Square SLW = Square / Frost Lens - Wide Flat FDL = Flat Frost / Diffuse Lens	UNV = Universal Voltage 120-277 347 = 347V 480 = 480V ⁽³⁾		
Standard Nominal Lumen Packages ⁽⁴⁾						
4 ft. Round Lens SL3, 20SL, 22SL, 26SL, 31SL, 33SL, 37SL, 41SL, 45SL, 48SL, 51SL, 57SL, 60SL, 63SL, 67SL, 74HL, 81HL, 84HL, 87HL, 90HL, 93HL, 100HL, 104HL						
8 ft. Round Lens SL3, 40SL, 44SL, 52SL, 62SL, 66SL, 74SL, 82SL, 90SL, 96SL, 102SL ⁽⁵⁾ , 114SL ⁽⁵⁾ , 120SL ⁽⁵⁾ , 126SL ⁽⁵⁾ , 134SL ⁽⁵⁾ , 148HL ⁽⁵⁾ , 162HL ⁽⁵⁾ , 168HL ⁽⁵⁾ , 174HL ⁽⁵⁾ , 180HL ⁽⁵⁾ , 186HL ⁽⁵⁾ , 200HL ⁽⁵⁾						
Options		Driver Type ⁽¹⁴⁾		Number of Drivers	Packaging	
Emergency ^{(3), (6)} EL7W =7-watt 120V-277V emergency battery pack ⁽⁷⁾ EL10W =10-watt 120V-277V emergency battery pack ⁽⁷⁾ EL14W =14-watt 120V-277V emergency battery pack ⁽⁷⁾ EL10WSD =10W emergency battery pack with self-diagnostic installed ^{(7), (8)} EL14WSD =14W emergency battery pack with self-diagnostic installed ^{(7), (8)} Sensor Location MID =Mid-row		Wiring ^{(10), (11)} PI =Wiring Plug-in Option ⁽¹³⁾ CPI =Crossover Plug-in Option ⁽¹³⁾ PC6/120 =(NEMA 5-15P) 6 ft. Cord with NEMA Straight Plug PC6/277 =(NEMA L7-15P) 6 ft. Cord with NEMA Twist Plug C6(1) =1 Circuit, 6 ft. Cord no Plug C3(1) =1 Circuit, 3 ft. Cord no Plug Sensor ⁽⁶⁾ [Blank] =No Sensor WPS (formerly WAA) =WaveLinX PRO Wireless Integrated Sensor ^(A) WLS (formerly WAB) =WaveLinX LITE Wireless Integrated Sensor ^(B) SVPD2 =Integrated occupancy and daylight dimming sensor, 900 sq. ft. coverage ^(C) ZW-SWPD3 =Integrated Wavelinx Wireless Sensor, 1200 sqft. coverage ^{(12), (8)}		CD =0-10V Dimming Driver (10%-100% Dimming) HCD =0-10V Dimming Driver (1%-100% Dimming) 5LTD =Fifth Light (DALI) Driver ⁽¹⁵⁾	1 = 1 Driver 2 = 2 Drivers	U = Unit Pack

NOTES: (1) DesignLights Consortium® Qualified and classified for both DLC Standard and DLC Premium refer to www.designlights.org for details. (2) 347/480V max ambient temp 40C. (3) 4 ft and 8 ft only. (4) Nominal lumen values. See table for value and fixture length. (5) Requires two drivers. (6) When ordering sensor or EBP option, specify UNV (for 120 or 277V), 347 or 480V. (7) Factory installed with integral test switch/indicator/laser test. For approximate delivered lumens multiply the lumens per watt of the desired fixture by the wattage of the emergency battery pack (100 lm/W x 7=700 lumens). IES-format photometry for luminaire under emergency operation available. (8) EL10WSD and EL14WSD not available with 347V. (9) Used to bypass local control during outage. Must be used in conjunction with UL 1008 device (provided by others). GTR2 include 2 relays on fixtures with dimming drivers. ETRD option only requires one relay when used on a dimming fixture. Must specify voltage as 120 or 277V when ordering GTR2. (10) Consult tech support on numerous options for this feature. (11) Most common C&P shown. Must specify location for cord. All "end" locations will be on the end with sensor installed. (12) WLSx provided in separate enclosure. (13) For more information on PI/CPI options, refer to 022341_pi_tilw (cooperlighting.com). (14) 2ft with Sensor limited to CD and HCD drivers only. (15) For a complete listing of Fifth Light products, visit www.cooperlighting.com (16) Integral Mid-Row sensor does not apply for ZW-SVPD3.

Integrated options must be used in conjunction with the associated system and may not be compatible with other options or accessories. Please refer to the following: (A) Consult WaveLinX system pages for additional details and compatibility. (B) WaveLinX Lite devices are not currently compatible with the WaveLinX Wireless Area Controller. Consult WaveLinX Lite system pages for additional details and compatibility. (C) Consult SVPD series system pages for additional details and compatibility

Maximize Savings with Utility Rebates

Cooper Lighting Solutions Exclusive Utility Rebate Incentive Finder



www.cooperlighting.com/global/resources/incentive-finder



Look for the DLC, ENERGY STAR and T20 icons that identifies qualified products.

By using our Online Incentive Finder, you can search by province and postal code to find local rebates that save money and add value for your customers. For your convenience, we've identified and included the ENERGY STAR® and DLC® product ID numbers within the MarketPro catalog.

METALUX WRAPS FLUSHMOUNTS									
NWS Series									
WRAP									
<ul style="list-style-type: none"> • Ideal for replacing downlights in existing downlight housings up to 100W • 3 Watt/foot CCT: 3000K, 4000K, 5000K • Full beam spread: 120° • Surface level or ceiling mount (no junction box or daisy lead required) 									
Product ID	Beam Spread	Watt/foot	Watt/foot	Watt/foot	Watt/foot	Watt/foot	Watt/foot	Watt/foot	Watt/foot
PK3W95DW	95°	3W	3W	3W	3W	3W	3W	3W	3W
WP Series									
WRAP									
<ul style="list-style-type: none"> • Compact LED wrap light offers value and energy savings • Full beam spread for maximum light output and uniformity • Low profile, highly visible design. Flush mount or surface mount • Full beam spread: 120° 									
Product ID	Beam Spread	Watt/foot	Watt/foot	Watt/foot	Watt/foot	Watt/foot	Watt/foot	Watt/foot	Watt/foot
2324853	95°	3W	3W	3W	3W	3W	3W	3W	3W
WNLED Series									
WRAP									
<ul style="list-style-type: none"> • Compact LED wrap light offers value and energy savings • Full beam spread for maximum light output and uniformity • Low profile, highly visible design. Flush mount or surface mount • Full beam spread: 120° 									
Product ID	Beam Spread	Watt/foot	Watt/foot	Watt/foot	Watt/foot	Watt/foot	Watt/foot	Watt/foot	Watt/foot
2324853	95°	3W	3W	3W	3W	3W	3W	3W	3W
FM Dimming Series									
FLUSHMOUNT									
<ul style="list-style-type: none"> • Full beam spread for maximum light output and uniformity • Full beam spread: 120° 									
Product ID	Beam Spread	Watt/foot	Watt/foot	Watt/foot	Watt/foot	Watt/foot	Watt/foot	Watt/foot	Watt/foot
2324853	95°	3W	3W	3W	3W	3W	3W	3W	3W

DLC Product ID

PK3W95DW

DLC Premium items are denoted in bold

ENERGY STAR ID

2324853

Cooper Lighting Solutions has the largest portfolio of **ENERGY STAR®**-certified recessed downlights and **DesignLights® Consortium (DLC)** - qualified commercial luminaires, meeting high-quality, energy-efficient standards. See below for more information about the compliance codes and standards which identify products that qualify for utility rebates.



This non-profit organization drives the adoption of energy, efficiency and high-performing commercial lighting and controls

products. Our products represent the broadest portfolio available.

To find which Cooper Lighting Solutions products are listed, visit www.designlights.org/QPL.



ENERGY STAR® is the trusted, government-backed symbol for energy efficiency helping us save money and protect the environment through energy-efficient products and practices.

Visit www.energystar.gov for more information.

Source Lighting Education Center

The benchmark for lighting educational facilities and programs for 30 years.



Expand Your Knowledge!

The SOURCE is an excellent resource for training and professional development. As the industry's leading lighting educational facility, the SOURCE offers numerous online and instructor-led courses and workshops for those wanting to expand their lighting and controls knowledge.



- ▶ Instructor-led Classes
- ▶ Free Online Courses
- ▶ Continuing Education
- ▶ reSource Articles



Scan for details

cooperlighting.com/source

Lighting & Controls

STOCK PRODUCT GUIDE

LIGHTING BRANDS

Ametrix
AtLite
Corelite
Ephesus
Fail-Safe
HALO
HALO Commercial
Invue
iO
Iris
Lumark
Lumière
McGraw-Edison
Metalux
MWS
Neo-Ray
Portfolio
PrentaLux - 3D Printed Lighting
RSA
Shaper
Streetworks
Sure-Lites
Telensa

CONTROLS BRANDS

Greengate
Fifth Light
Intelligent Lighting Controls

CONNECTED LIGHTING SYSTEMS AND SMART SPACES PLATFORM

WaveLinx



Cooper Lighting Solutions
1121 Highway 74 South
Peachtree City, GA 30269
P: 770-486-4800
www.cooperlighting.com

Canada Sales
5925 McLaughlin Road
Mississauga, Ontario L5R 1B8
P: 1-800-863-1354

© 2024 Cooper Lighting Solutions
All Rights Reserved
Printed in USA
Publication No. CA525990
January 2024

Cooper Lighting Solutions is a registered trademark.

All other trademarks are property of their respective owners.

Product availability, specifications, and compliances are subject to change without notice.