

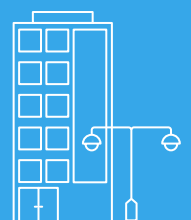
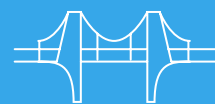
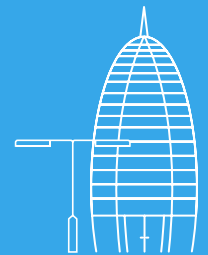
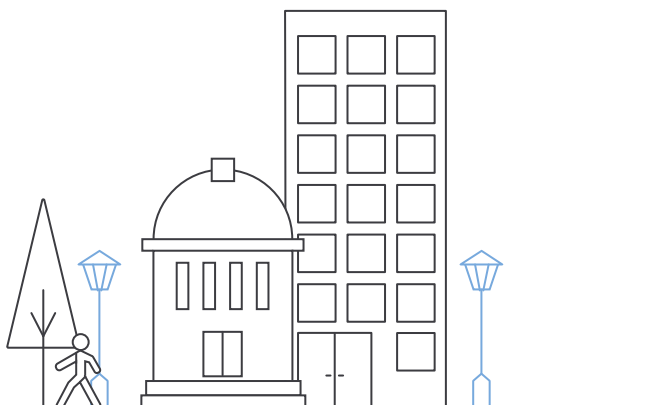


Central Management System (CMS)

powered by **interact**

Empower Your Lighting

Trellix Infrastructure's lighting management system powered by Interact supports managing lighting assets, controlling connected lighting systems, and optimizing the energy usage of public lighting. Interact offers an extensive, yet consistent user experience in managing cellular technologies in connectivity and single light point applications including devices beyond lighting (sensors).



Key benefits



Award-Winning Excellence

Our design, crowned with the iF Product Design Award, delivers superior quality and innovation.



Continuous Cloud Innovation

Benefit from constant updates, ensuring cutting-edge performance in lighting management.



Enhanced Security

Protect your operations with advanced two-factor authentication and secure access controls.



Tailored Dashboard Views

Customize your control interface with adaptable views for efficient project oversight.



Automated Fault Reporting

Keep your lighting systems optimal with proactive maintenance alerts.



Efficient Remote Management

Maximize energy savings and public safety with our intelligent remote lighting controls.



Optimal Asset Utilization

Achieve peak operational efficiency with our robust data tools and insightful analytics.



Full Project Command

Take charge with comprehensive controls over user access and data insights.



Integrated Ecosystem Compatibility

Integrate smoothly with existing systems via our REST API and standardized interfaces like TALQ & FiWare.

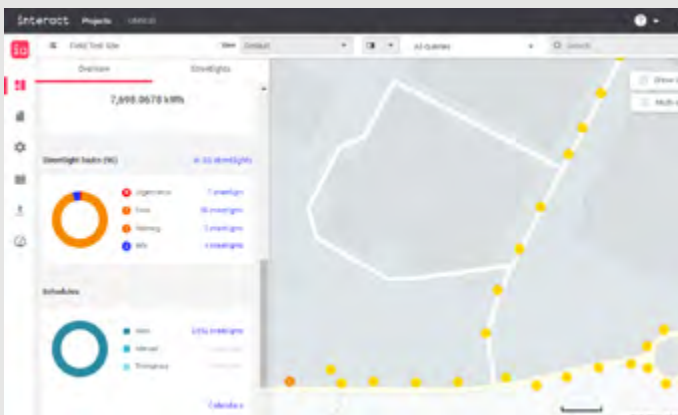


Accessible Support

Use our Engineered Solutions Hub to easily navigate system features and get online assistance. Contact us at TrellixInfrastructureSupport@CooperLighting.com for further support.

Dashboard Functionality

The dashboard page gives users a clear site-level status overview through an information panel and offers tools to navigate easily through the project.



Site-Level Overview	Offers a clear and comprehensive status summary for efficient navigation.
Custom Selections	Enables targeted asset management through customizable groupings and layouts.
Advanced Queries	Facilitates quick searches and query management with unique data fields.
Status at a Glance	Provides immediate insights into project status, including power usage and faults.
Streetlight Control	Offers direct access to streetlight management functions for operational efficiency.
Configurable Access	Allows for tailored project control through adjustable user roles and permissions.

Map Features

The CMS map offers a graphical overview of the managed lighting system with:

Asset symbols	<ul style="list-style-type: none"> • Asset type (streetlight or sensor) • Status (uncommissioned, commissioned, info, warning, and fault)
Intuitive controls	<ul style="list-style-type: none"> • Zoom level • Map/satellite layers • Labels • Asset selection
Quick access to actions context menus	<ul style="list-style-type: none"> • Create, mark, and move asset • Replacement workflow • Viewing properties or switching logs
Data visualization	<ul style="list-style-type: none"> • Visualize asset property distribution across a project, for example, calendar type, luminaire type, firmware revision

Application reports

Generate/download reports for data comparison, sharing with stakeholders without application access, or exporting to external storage or third-party software for further analysis.

Energy Reports	Visual bar charts for asset energy tracking, comparison, and CSV export, including cost and CO2 data.
Project Detail reports	Detailed event logs in CSV format, covering changes, faults, and (de)commissioning actions.
Burn Hours Report	Excel reports on asset operation times for any selected month.
Sensor Reports	CSV reporting on sensor-detected events with time range customization within projects.

Asset management

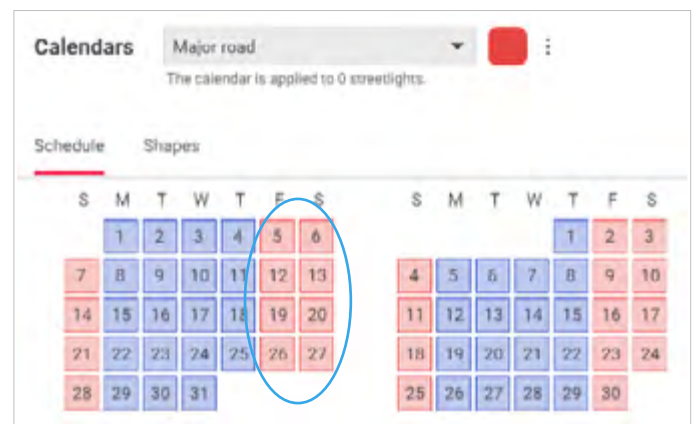
Optimize operations by keeping track of lighting installation assets and their components in detail:

Property Management	Detailed tracking and editing of streetlight, OLC controller, and luminaire specifics, including geolocation, installation details, and operational status.
Data Integration	Bulk upload functionality for asset data via XLS and attachment addition for comprehensive asset documentation.
Operational Monitoring	Daily logging for validating lighting levels and operational reasons, ensuring asset performance integrity.

Effortless Lighting Control

Seamlessly manage luminaire operations to enhance energy efficiency with smart dimming and scheduling. Elevate safety with optimal lighting levels, and streamline operations with remote health checks and proactive fault reporting.

Control	<ul style="list-style-type: none"> Manually turn on/off and set the light level Real-time properties* Sensor override* Control Link API
Calendar/schedule	<ul style="list-style-type: none"> Dim schedule per day with 10* switch points Graphical UI to create schedules and dim behavior Apply dim schedule per day of the week, month, year (Recurring) exceptions using rules Schedule prioritization rules Apply the schedule to a group of luminaires Includes constant light output
Switch types	<ul style="list-style-type: none"> (Synchronized) photocell with elevation angle Astronomical clock with offset Switch the power grid
Events/faults	<ul style="list-style-type: none"> Immediate notification for critical events* Actionable information for accurate troubleshooting such as light out, day burner, no report of data, Embedded service guide to help resolve faults
Real-time properties	<ul style="list-style-type: none"> Broad range of properties including dim value, voltage, current, and so
Granular energy data	<ul style="list-style-type: none"> Daily energy values per asset and groups (see also reports)



* Varies according to the control system.

This Software service is subject to Signify's End of Life policy that can be found here: www.signify.com/global/our-offers/for-professionals/policies-announcements

Hardware options and support

Interact can manage different connected lighting products using one consistent user interface. It is even possible to manage different technologies within a single project.

	Individual Light & Asset management	Asset management	Co-existence*
Control system	<ul style="list-style-type: none"> Cellular nodes 		
Sensors	<ul style="list-style-type: none"> Outdoor Multi Sensor 	<ul style="list-style-type: none"> 3rd party sensors (contact Cooper Lighting Solutions representative for available options) 	<ul style="list-style-type: none"> D4i-compliant sensors

 **Note**

Each item listed contains a hyperlink to publicly available online product documentation. Readers of a hardcopy can inquire same information through Cooper Lighting Solutions representatives

Refer to individual product Specification Sheets.

There are several layers of support:

- Light & asset management allows users to remotely both control and manage assets.
- Asset management allows users to only manage assets.
- Co-existence ensures that switch logs reflect light level changes triggered by local sensors.

Integration

Easily integrate Interact in 3rd party applications (such as management systems, dashboards, ERP, and work order management systems) using RESTful APIs

For more information, contact us at:

trellixinfrastructuresupport@cooperlighting.com

 **Note**

An account is required to access full API documentation.

Interact APIs

- Light Control
- Fault Monitor
- Energy
- Calendars
- Asset Management
- Asset Real-time Properties
- Asset Switch Logs

Standards

- TALQ
 - FIWARE
-

Streamlined Open API Integration

Versatile Integration	Seamlessly connect with a suite of third-party systems, including ERP and management dashboards, using our comprehensive open APIs.
Standardized Interfaces	Employ our standardized RESTful APIs for consistent integration and the development of new smart city applications that leverage existing lighting infrastructure data.
Operational Monitoring	Daily logging for validating lighting levels and operational reasons, ensuring asset performance integrity.
Expansive Functionality	Our APIs offer extensive capabilities to optimize city lighting operations, integrate with various software systems, and enable data-driven decision-making.
Mobile Management	Enhance and control your lighting infrastructure remotely with dedicated Light Control APIs, supporting both individual and grouped luminaires with customizable settings.
Synchronized Asset Management	Facilitate real-time, two-way synchronization between city management systems and asset data streams for up-to-the-minute accuracy.
Proactive Monitoring	Utilize Monitoring APIs to oversee the status of lighting assets and gather essential operational data in real time.
Energy Consumption Tracking	Monitor and manage energy use efficiently with specialized Energy APIs designed for connected lighting assets.

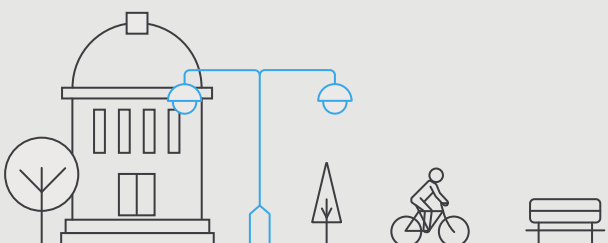
 **Note**

For additional information, contact support at trellixinfrastucturesupport@cooperlighting.com.

System requirements

Interact application is cloud hosted and is accessible on a PC or laptop using one of the following browsers supporting 128-bit encryption and with JavaScript enabled:

Browser	Version
Google Chrome	57 and above
Mozilla Firefox	50 and above
Microsoft Edge	79 and above
Internet	
Minimum internet bandwidth	10 Mbps



Policies and notices

For information specific to:

- Security and privacy
- Terms of Software Service, Terms of Use, and Data Processing Schedule
- Use of open source software
- Software life cycle management
- Privacy notice

Contact your Cooper Lighting local representative or contact us at:

trellixinfrastructuresupport@cooperlighting.com

Disclaimer

This information contained here is for informational purposes only and is provided “as is” without warranty of any kind, whether expressed or implied. This information is subject to change without notice. Customers are responsible for making their own independent assessment of this informational brochure and the use thereof. Any commitments or liabilities in respect hereof are exclusively defined in the agreements between Cooper Lighting Solutions and its customers. For more detailed information contact:

trellixinfrastructuresupport@cooperlighting.com

Trellix Infrastructure

Find out how Interact can transform your business

www.cooperlighting.com/global/brands/trellix-infrastructure

© 2024 Cooper Lighting Solutions
All Rights Reserved

Cooper Lighting Solutions is a registered trademark. All other trademarks are property of their respective owners. Product availability, specifications, and compliances are subject to change without notice. No representation or warranty as to the accuracy or completeness of the information included herein is given and any liability for any action in reliance thereon is disclaimed. All trademarks are owned by Signify Holding or their respective owners.

Publication No. BR53219824EN
March 28, 2024



**CLICK OR SCAN
FOR RESOURCES**