

## EBPLED7W/EBPLED14W Battery Pack



Product Feature	Customer Benefit	Certification / Warranty
Field installable	Meet emergency code with no aesthetic impact	UL 924 Classified for field installation
Satisfies all wiring configurations as conduit and test button are included	Design ease; less SKU's to stock	NFPA/NEC/OSHA/CEC code compliant
7 watt or 14 watt output creates 600 to 2500 lumens in emergency mode	Design flexibility; superior egress coverage	Guaranteed compatibility w/ Eaton Fixtures
Laser test feature enables simplified NFPA testing	Labor savings on NFPA/OSHA required testing	5 year product warranty

## APX/APX7H Polycarbonate Exit



Product Feature	Customer Benefit	Certification / Warranty
LED source with nickel cadmium battery	Up to 10 years with no maintenance	UL 924 damp location listed
Red or Green LED illumination	Design flexibility	NFPA/NEC/OSHA/CEC code compliant
Universal mount; single or double sided	Design flexibility	5 year product warranty
Optional remote capacity to drive 2 or 4 LED heads (H version)	Design flexibility; labor and material savings	7 year prorated battery warranty

## APC7/APC7H Polycarbonate LED Combo



Product Feature	Customer Benefit	Certification / Warranty
LED source with nickel cadmium battery	Up to 10 years with no maintenance	UL 924 damp location listed
Red or Green LED illumination	Design flexibility	NFPA/NEC/OSHA/CEC code compliant
Universal mount; single or double sided	Design flexibility	5 year product warranty
LED emergency heads	Design flexibility; labor and material savings	7 year prorated battery warranty
Optional remote capacity to drive 2 LED heads (H version)	Design flexibility; labor and material savings	

## APEL/APELH2 Polycarbonate LED Emergency



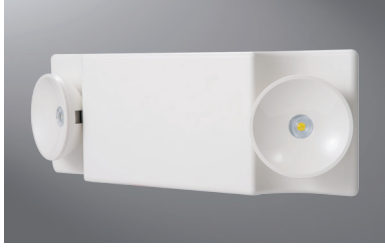
Product Feature	Customer Benefit	Certification / Warranty
LED source with nickel cadmium battery	Up to 10 years with no maintenance	UL 924 damp location listed
Adjustable heads	Design flexibility	NFPA/NEC/OSHA/CEC code compliant
Optional remote capacity to drive 2 LED heads (H2 version)	Design flexibility; labor and material savings	5 year product warranty
		7 year prorated battery warranty

## APWR1/APWR2 Indoor/Outdoor Polycarbonate LED Remote



Product Feature	Customer Benefit	Certification / Warranty
LED source	Up to 10 years with no maintenance	UL 924 wet location listed
Adjustable heads	Design Flexibility	NFPA/NEC/OSHA/CEC code compliant
Outdoor rated	Design flexibility; less SKU's to stock	5 year product warranty

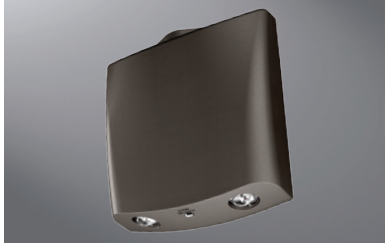
## SEL Polycarbonate LED Emergency



Product Feature	Customer Benefit
Up to 60 feet of egress coverage	Up to \$300 savings on installation
LED source with Nickel cadmium battery	Up to ten years with no maintenance
Optional remote capacity (SRP/SRM remotes)	Indoor, outdoor design flexibility
Self diagnostics w/laser test option	Labor savings on NFPA/OSHA required testing

Certification / Warranty
UL924 damp location
NFPA/NEC/OSHA/CEC code compliant
5-year product warranty
7-year prorated battery warranty

## SELW Polycarbonate Outdoor LED Emergency



Product Feature	Customer Benefit
LED source with Nickel cadmium battery	Up to ten years with no maintenance
Forward throw optic	Maximum design flexibility
Up to 29 feet of egress coverage	Design flexibility; superior egress coverage
Self diagnostics w/laser test option	Labor savings on NFPA/OSHA required testing

Certification / Warranty
UL924 wet location
NFPA/NEC/OSHA/CEC code compliant
5-year product warranty
7-year prorated battery warranty

## LPX Polycarbonate / CX Die Cast Exit



Product Feature	Customer Benefit
LED source with Nickel cadmium battery	Up to ten years with no maintenance
Field adjustable for red or green / universal mount	Maximum design flexibility; less SKU's to stock
Optional remote capacity (SRP/SRM remotes)	Indoor/outdoor design flexibility
Self diagnostics with laser test option	Labor savings on NFPA/OSHA required testing

Certification / Warranty
UL924 damp location listed
NFPA/NEC/OSHA/CEC code compliant
5-year product warranty
7-year prorated battery warranty

## SELDW Industrial LED Emergency



Product Feature	Customer Benefit
LED source with Nickel cadmium battery	Up to ten years with no maintenance
Up to 60 feet of egress coverage	Fixture cost savings - less fixtures required
Self diagnostics with laser test standard	Labor savings on NFPA/OSHA required testing
NEMA 4X; IP66; - 30° C to 50° C temp range	Maximum design flexibility; less SKU's to stock

Certification / Warranty
UL924 wet location listed
NEMA 4X/IP66/NSF
NFPA/NEC/OSHA/CEC code compliant
HAZ (class 1, Div 2) option
5-year product warranty
7-year prorated battery warranty

## UX Industrial Exit



Product Feature	Customer Benefit
LED source with Nickel cadmium battery	Up to ten years with no maintenance
Field adjustable for red or green/universal mount	Maximum design flexibility; less SKU's to stock
Self diagnostics with laser test standard	Labor savings on NFPA/OSHA required testing
NEMA 4X; IP66; - 30° C to 50° C temp range	Maximum design flexibility; less SKU's to stock

Certification / Warranty
UL924 wet location listed
NEMA 4X/IP66/NSF
NFPA/NEC/OSHA/CEC code compliant
HAZ (class 1, Div 2) option
5-year product warranty
7-year prorated battery warranty

**Eaton**  
1121 Highway 74 South  
Peachtree City, GA 30269  
P: 770-486-4800  
www.eaton.com/lighting

**Canada Sales**  
5925 McLaughlin Road  
Mississauga, Ontario L5R 1B8  
P: 905-501-3000  
F: 905-501-3172

© 2017 Eaton  
All Rights Reserved  
Printed in USA  
Publication No. SA518019EN  
June 14, 2017 8:33 AM

Eaton is a registered trademark.

All other trademarks are property of their respective owners.

Product availability, specifications, and compliances are subject to change without notice.