

Project		Catalog #		Type	
Prepared by		Notes		Date	



# WaveLinx Wired

## SCMH1200-NA

12 Channel 0-10V Dimming Control Module

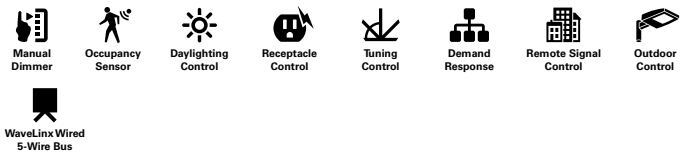
### Typical Applications

Office • Education • Healthcare • Hospitality • Retail • Industrial • Manufacturing

### Product Certification



### Product Features



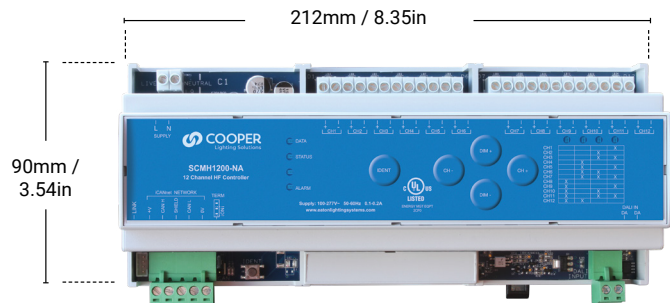
### Interactive Menu

- Ordering Information page 2
- Additional Resources page 3
- Wiring Diagrams page 3
- Connected Systems page 4
- Product Warranty

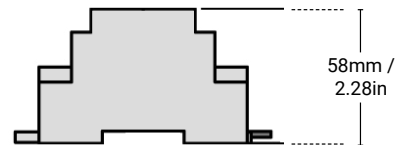
### Top Product Features

- Twelve channel 0-10V controller
- Software patchable to any relay in an SCMR1220-NA for On/Off
- Each output is capable of 0-10V (source or sink) or broadcast DALI
- Fail to full bright safety feature

### Dimensions



Two key hole slots as an alternative to DINRail fixing



additional product diagrams

## Product Specifications

### Key Features

- 12 channel device
- 1-10V, 0-10V
- 128 scene memory
- Connects to WaveLinx digital network
- Fail to full safety feature
- DALI in (12 address DALI end device)

### Mechanical

**Weight:** 0.35kg/0.77lbs

**Operating temperature:** +2°C to +50°C

Note: All enclosures must be adequately ventilated

**Max storage temperature:** +60°C

**Humidity:** +5 to 95% non-condensing

**Environmental protection:** IP20

### Electrical

**Control:** Via digital network connection or DALI

**Supply:** 120-277VAC +/- 10% 50/60 Hz, 0.3AMAX

#### Load Types:

- 80 per channel do not exceed 500 drivers or ballasts in total
- 0-10V control, 50mA source current
- 1-10V control, 50mA sink current

#### Terminal Sizes:

- Incoming supply, max cable size: 16 AWG
- 0-10V output, max cable size: 16 AWG per terminal
- Digital network cable type: Belden 1502 or equivalent

### Standards/Ratings

- cULus Listed - Energy Management Equipment (UL916)
- Manufactured in an ISO 9001 certified factory
- Meets ASHRAE Standard 90.1 requirements
- Meets IECC 2015 requirements
- Meets CEC Title 24 requirements

#### Environmental Regulations:

- RoHS Directive 2011/65/EU

### Warranty

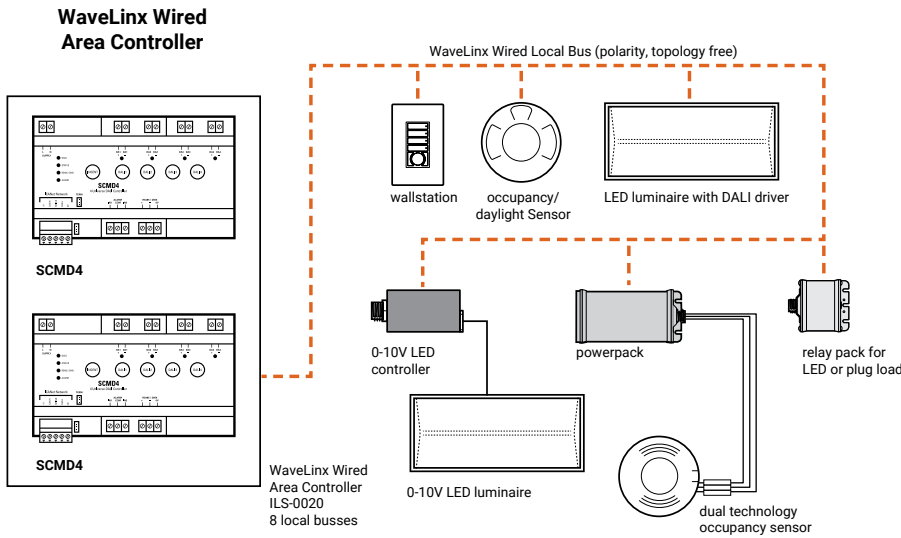
Five year warranty standard

## System architecture

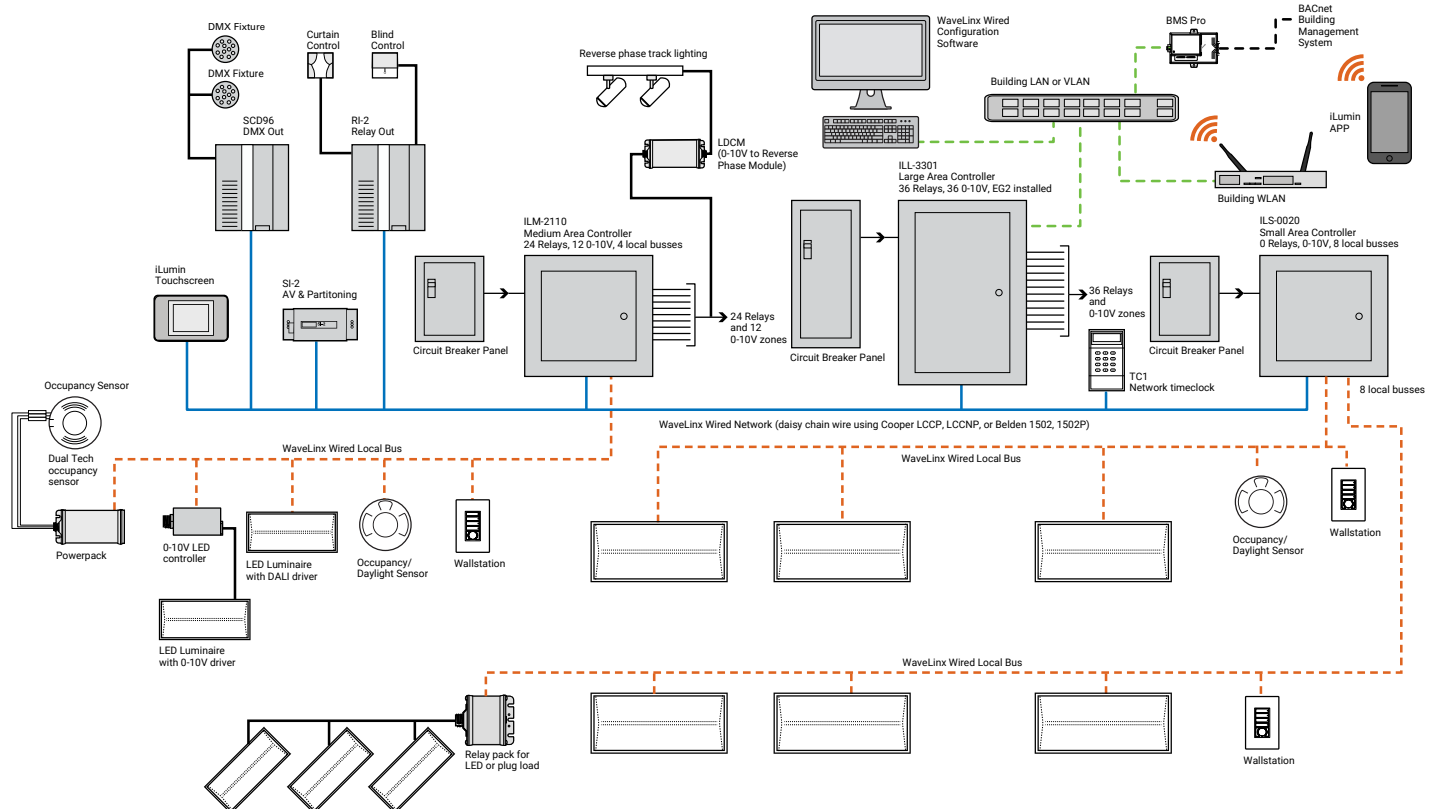
Simple WaveLinX Wired system

### Control Systems

- WaveLinX Wired
- Trellix
- VividTune



Complete WaveLinX Wired system



## Overview

The SCMH1200-NA is a DINRail mount 12 channel 0-10V control module. Each channel may be configured to provide 1-10V or 0-10V control for analog devices. With WaveLinX Wired network connectivity, it has the capability of being linked with a virtually limitless number of other WaveLinX Wired products to build any size of system.

## Sample System Topology:

This diagram shows the main components of the WaveLinx Wireless and Wired Connected Lighting system.

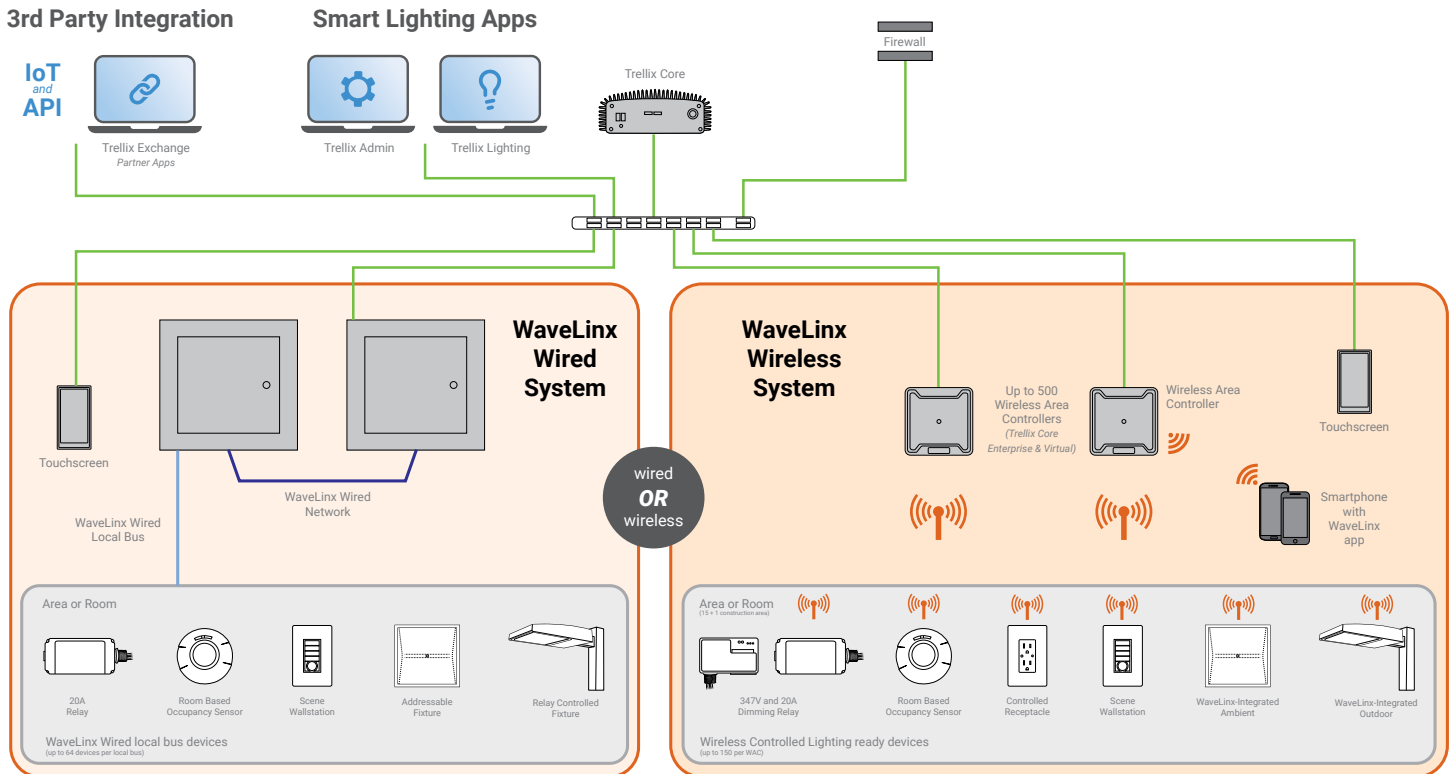
The **WaveLinx wireless system** communicates using wireless mesh technology based on the IEEE 802.15.4 standard. A PoE LAN connection for each Wireless Area Controller (WAC) is required for power and data access to the building lighting network.

The **WaveLinx wired system** controls the devices using relay, 0-10V, DMX and the WaveLinx wired digital local bus. The WaveLinx wired system connects to the building LAN using the EG2 module. Each WaveLinx wired area controller communicate on the WaveLinx wired network. The WaveLinx wired network supports over 60,000 devices.

The Trellix Core, WaveLinx Area Controllers (WAC) and WaveLinx Ethernet Gateways (EG2) communicate with each other over the Ethernet network.

Please refer to the WaveLinx Wireless Network and IT Guidance Technical Guide and WaveLinx Wired Network and IT Guidance Technical Guide for more information.

[View WaveLinx Network and IT Guidance Technical Guide](#)



## Control Systems

- Trellix
- WaveLinx Wireless
- WaveLinx Wired
- VividTune