

EISSBox OpenADR 2.0b Phidget Software



Energy Interop™ Server & System (EISS™) EISSBox™ Phidget Software installation and User Guide.

IPKeys EISSBox is an OpenADR 2.0b-certified end point that is capable of receiving demand and response (DR) and pricing signals. This document is a guide on how to setup, install and trouble shoot the EISSBox 2.0.


1 – EISSBox Administration

A familiarity with IP networks and computer equipment is essential to understanding and using the Phidget software. Please follow the bulleted steps in each section below to install and setup your EISSBox.

1.1 – Installing the Phidget Desktop Application

- Download and install the appropriate application for your operating system from:
<http://www.phidgets.com/drivers.php>.
- For Windows users, download and install Apple's Bonjour Print Services drivers from http://support.apple.com/downloads/DL999/en_US/BonjourPSSetup.exe.

Note: Bonjour is used by the Phidgets software to detect other Phidgets connected on the local subnet.

- For Windows users, the Phidget software resides in your system tray with this icon: 
 - For MacOS users, the Phidget desktop application resides in the System Preferences. After installation, you should see it at the bottom of the System Preferences panel among the other third party preferences. Bonjour functionality should already be included with the OS.
- If your EISSBox is running and on the same network as the computer running the application, the Phidget Control Panel will appear after opening the program (see Figure 1 below.)
- Select the PhidgetSBC tab and look for your EISSBox. The Hostname will match the serial number found on the inside front cover or on the back of the unit. Once selected, the IP address will be located on the bottom of the dialogue box.

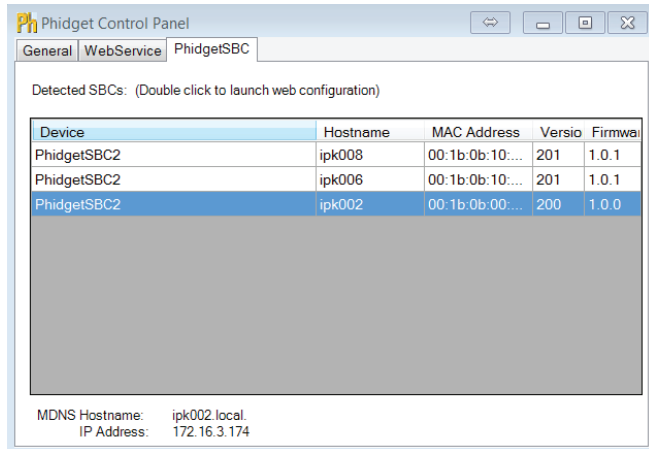


Figure 1. The Phidget Control Panel

- You can double click on your EISSBox and open the administration console as seen in Figure2 below.

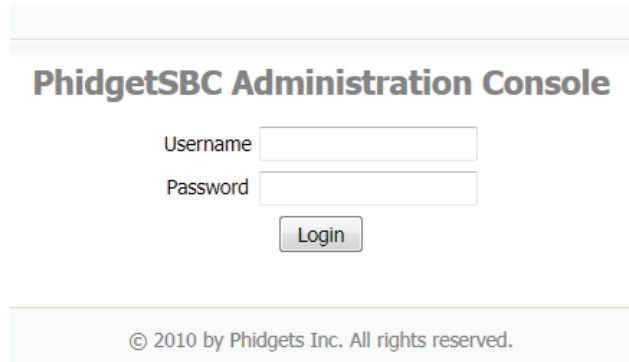


Figure 2. The PhidgetSBC Administration Console

1.2 – Accessing the EISSBox

IPKeys ships all boxes with DHCP enabled, that means if your network does not have DHCP enabled (most do), then the EISSBox will be unable to get an IP address. In such situations, IPKeys also provides a secondary IP address of 1.1.1.1. This will allow direct access to the box in the event that the network is not DHCP-enabled or if an incorrect static IP address is assigned.

You can directly connect the EISSBox to a computer with a "gigabit" ethernet interface using a standard ethernet cable. If your computer doesn't have a "gigabit" ethernet, then a crossover cable is required. If you are in need of a cross over cable, please contact IPKeys to purchase one.

- In either case, connect the EISSBox directly to your computer
- Disconnect your computer from other networks and set your computer for a static IP address of 1.1.1.2
- Using your browser, navigate to 1.1.1.1 and you will see the Phidget log on interface (Figure 2 above)
- Log into the EISSBox with the factory default username and password of admin and ipkeys respectively

Note: For security, these default settings should be changed to prevent tampering. If the new username and password is forgotten then the EISSBox will have to be returned to IPKeys for reformatting and installation of the software.

1.3 - PhidgetSBC Configuration

After logging into the console, there are two tabs that are of interest to the administrator, Network and Projects. Figure 3 below shows the Network tab open.

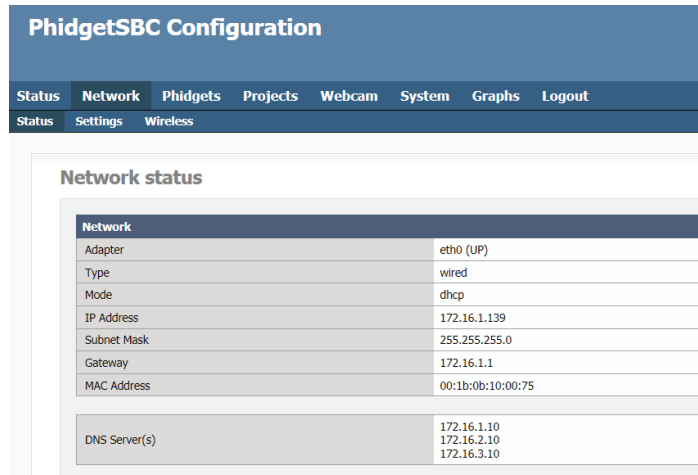


Figure 3. The PhidgetSBC Configuration – Network Status

Using the Settings option under the Network tab (Figure 4 below), the administrator can do the following:

- Set the static IP address
- Configure DNS settings

Note: IPKeys uses SSH to configure EISSBoxes at the factory. If desired, this feature can be disabled by the administrator for greater security. After you have made the necessary changes click the Save Changes button.

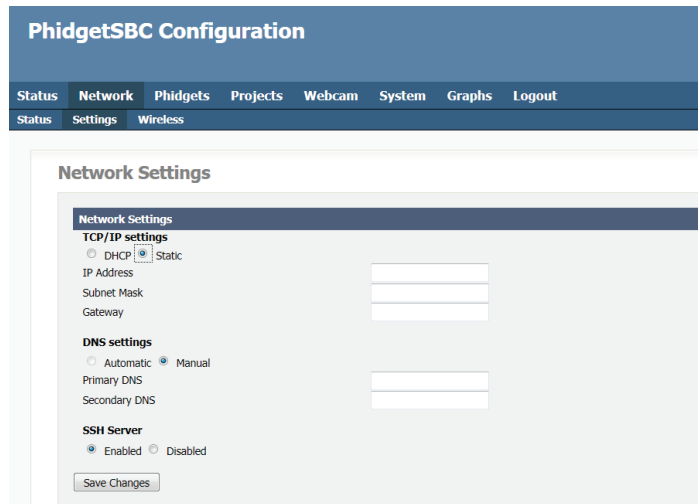


Figure 4. The PhidgetSBC Configuration – Network Settings

WARRANTIES AND LIMITATION OF LIABILITY

Please refer to www.cooperlighting.com under the Legal section for our terms and conditions.



Cooper Lighting Solutions
1121 Highway 74 South
Peachtree City, GA 30269
P:770-486-4800
www.cooperlighting.com

© 2020 Cooper Lighting Solutions
All Rights Reserved
Printed in USA
P/N: 9855-000016-00

Cooper Lighting Solutions is a registered trademark.

All trademarks are property of their respective owners.

In cooperation with:
IPKeys Technologies, LLC