

**Description**

The H251CAT recessed housing is designed for residential and light commercial applications. The H251CAT is designed for use in shallow ceilings and features full-frame robust construction, feed through listing, Got Nail! bar hangers; and may support the use of higher wattage lamps. The wide variety of trims available allows a number of different lighting effects to be created with one basic housing. The H251CAT is designed for use in shallow insulated ceilings and may be in direct contact with insulation\*.

May be retrofit with compatible Halo LED lighting systems.

Catalog #		Type
Project		
Comments		Date
Prepared by		

**Specification Features**

**Housing**

- Single wall aluminum housing
- Sealed and gasketed for Air-Tite™ ready installation
- Designed for insulated ceilings in direct contact with insulation\* (May also be installed in non-insulated ceilings)
- Housing adjusts in plaster frame to accommodate up to 1-3/8" ceiling thickness

**Socket Plate**

- Rigid socket plate adjusts and locks without tools for various lamp sizes
- Socket plate and bracket may be removed when using socket supporting trims

**Plaster Frame**

- Galvanized steel construction
- The housing can be removed from plaster frame to provide access to the junction box
- Plaster frame features include:
  - Regressed locking screw positioned for securing hanger bars from below the ceiling
  - Cutouts for easily crimping hanger bars in position
  - Halo name embossed on plaster frame
  - Pre-installed Air-Tite ready ceiling contact gasket

**Got Nail!™ Bar Hanger Bracket**

- Bar Hanger Features include:
- Pre-installed nail easily installs installs in regular lumber, engineered lumber and laminated beams
  - Safety and guidance system prevents snagging, ensures smooth straight nail penetration and allows bar hangers to be easily removed if necessary
  - Automatic leveling flange aligns the housing and lets you hold the housing in place with one hand while driving nails
  - Five additional mounting points

- Mounting point on top for hanger wire connection
- Integral T-bar clips snaps onto T-bars - no additional clips required

**q-Channel bars with Pass-N-Thru™**

- q-Channel bars feature an unique inverted "q" interlocking channel for rigidity and stability
- Pass-N-Thru™ feature allows bars to cross-over for tool-less shortening in tight spaces less than 12" without removing from the plaster frame. Push bars together and flex at score hole break points
- Housing can be positioned at any point within 24" joist span
- Bar hangers may be repositioned 90° on the frame

**Slide-N-Side™ Junction Box**

- Junction box features include:
- Slide-N-Side™ connectors allow non-metallic sheathed cable for both U.S. and Canada to be installed without tools and without removing knockouts
  - Allows wiring connections to be made outside the junction box
  - Simply insert the cable directly into the trap after connections are made
  - accommodates the following standard non-metallic sheathed cable types: (US) #14/2, #14/3, #12/2, #12/3 (Canada) #14/2, #14/3, #12/2
  - Positioned to accommodate straight conduit runs
  - Seven 1/2" trade size conduit knockouts with true pry-out slots
  - cULus Listed 26 in3 box volume
  - Listed for through branch (8) No. 12 AWG branch circuit 90° C conductors through the box

**Quick Connect™**

- Three 4-port push-in "Quick Connect" wire nuts included in junction box
- Speed installation and increase reliability
- No additional wire nuts required
- Simply strip and insert supply wires

**Socket:**

- Porcelain socket with nickel plated brass screw shell
- Snaps into trim for consistent lamp positioning
- Overspray protector included

**Thermal Protector:**

Self resetting thermal protector deactivates fixture if overheating occurs due to improper lamping or misapplied insulation

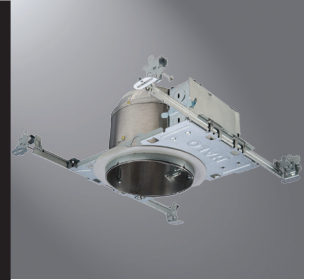
**Trims:**

Halo Fit-All concept offers multiple trim options in a variety of design styles, and functional beam distributions to control beam angle and lumen delivery in accommodating various lamp types including Halogen, CFL and LED

**Compliance**

- cULus Listed 1598 luminaire
- cULus Listed damp location
- cULus Listed for wet location, covered ceiling, with select trims
- cULus Listed for feed through
- cULus Listed for direct contact with insulation and combustible material\*
- Air-Tite code compliant. Certified under ASTM E283; not exceeding 2.0 cfm (0.944 L/s) air leakage rate tested at a 1.57 psf (75 Pa) pressure differential
- RoHS compliant

\*Not to be used in direct contact with spray foam insulation (Consult NEMA LSD57-2013)



**H251CAT**

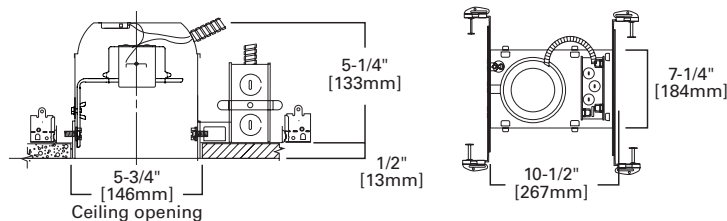
**5" IC, Shallow New Construction Housing, 120V**

**FOR USE IN INSULATED CEILINGS**

**FOR DIRECT CONTACT WITH INSULATION\***



**Dimensions**



**Special Features**

- Got Nail!™ bar hangers
- q-Channel bars with Pass-N-Thru™
- Slide-N-Side™ junction box
- Quick Connect™ push wire nuts
- Air-Tite™ code compliant

## Ordering Information

Sample Number: H25ICAT 5110WB

Order housing, trim and lamp (by others) separately for a complete luminaire.

## Housing

H25ICAT = 5" IC, Air-Tite, Shallow New Construction Housing, 120V

## Trims

### Reflectors



#### 5107 Specular Reflector, Self-flange

OD: 6-5/8" [168mm]

5107SC=Specular Reflector, White Self-flange



#### 5121 Shallow Full Cone Reflector, Self-flange

OD: 6-5/8" [168mm]

5121WH=White Reflector, White Oversized Self-flange

### Baffles



#### 5104 Shallow Metal Baffle, Self-flange

OD: 6-5/8" [168mm]

5104P=White Baffle, White Trim  
5104MB=Black Baffle, White Trim



#### 5102 Tapered Metal Baffle, Self-flange

OD: 6-5/8" [168mm]

5102WB=White Baffle, White Self-flange  
5102BB=Black Baffle, White Self-flange



#### 5109 Coilex® Tapered Baffle, Self-flange

OD: 6-5/8" [168mm]

5109WB=White Plastic Straight Coilex Baffle, White Self-flange  
5109BB=Black Plastic Straight Coilex Baffle, White Self-flange  
5109BKBB=Black Plastic Straight Coilex Baffle, Black Self-flange



#### 5110 Perftex™ Baffle, Self-flange

OD: 6-5/8" [168mm]

5110WB=White Perftex Baffle, White Self-flange  
5110WB=Black Perftex Baffle, White Self-flange  
5110BKBB=Black Perftex Baffle, Black Self-flange



#### 5126 Shallow Full Cone Baffle, Self-flanged

OD: 6-5/8" [168mm]

5126WB=White Baffle & Self-flanged  
5126BB=Black Baffle & White Self-flanged

### Adjustable - Eyeballs & Gimbals



#### 5060 Adjustable Gimbal 20° Tilt, Self-flange

OD: 6-3/8" [162mm]

5060P=White Gimbal, White Trim



#### 5070 Adjustable Eyeball 30° Tilt, Self-flange

OD: 6-3/8" [162mm]

5070P=White Eyeball, White Trim  
5070SN=Satin Nickel Eyeball, Satin Nickel Trim  
5070TBZ=Tuscan Bronze Eyeball, Tuscan Bronze Trim



#### 5071 Adjustable Eyeball 30° Tilt, Self-flange

OD: 6-1/2" [165mm]

5071P=White Eyeball, White Trim



#### 5130 Eyeball 35° Tilt, Self-flange

OD: 6-5/8" [168mm]

5130WH=White Eyeball, White Trim



#### 5135 Eyeball 35° Tilt, Self-flange

OD: 6-5/8" [168mm]

5135WH=White Eyeball, White Trim, Self-flanged



#### 5165 Gimbal 35° Tilt, Self-flange

OD: 6-5/8" [168mm]

5165WH=White Gimbal, White Trim  
5165BK=Black Gimbal, Black Trim  
5165SN=Satin Nickel Gimbal, Satin Nickel Trim  
5165TBZ=Tuscan Bronze Gimbal, Tuscan Bronze Trim

### Lenses & Wet Location Showerlights



#### 5054 Frosted Glass Dome Lens - Showerlight

OD: 6-3/8" [162mm]

5054PS=Frosted Glass Dome Lens, White Trim  
5054SNS=Frosted Glass Dome Lens, Satin Nickel Trim  
5054TBZS=Frosted Glass Dome Lens, Tuscan Bronze Trim



#### 5150 Low Profile, Frosted Dome Glass Lens, Self-flange - Showerlight

OD: 6-5/8" [168mm]

5150WH=Frost Dome Glass Lens with Reflector, White Plastic Self-flange  
5150SN=Frost Dome Glass Lens with Reflector, Satin Nickel Plastic Self-flange  
5150TBZ=Frost Dome Glass Lens with Reflector, Tuscan Bronze Plastic Self-flange



#### 5162 Drop Opal Plastic Lens, Self-flange

OD: 6-5/8" [168mm]

5162WH=Drop Opal Plastic Lens with Reflector, White Plastic Self-flange



#### 5145 Open Wet Location, Shallow Reflector, Self-flange - Showerlight \*

OD: 6-5/8" [168mm]

5145WH=White Self-flanged  
5145SN=Satin Nickel Self-Flanged  
5145TBZ=Tuscan Bronze Self-Flanged

### Open, Splay & Wall Wash



#### 5000 PAR Metal Splay, Self-flange

OD: 6-3/8" [162mm]

5000P=White Splay, White Trim  
5000SN=Satin Nickel Splay, Satin Nickel Trim  
5000TBZ=Tuscan Bronze Splay, Tuscan Bronze Trim



#### 5175 Open, Self-flange

OD: 6-5/8" [168mm]

5175WH=White Self-flange  
5175SN=Satin Nickel Self-flange  
5175TBZ=Tuscan Bronze Self-flange



#### 5176 Open, Self-flange

OD: 6-5/8" [168mm]

5176WH=White Self-flange  
5176SN=Satin Nickel Self-flange  
5176TBZ=Tuscan Bronze Self-flange



#### 5185 Open Splay, Self-flange

OD: 6-5/8" [168mm]

5185WH=White Self-flange  
5185SN=Satin Nickel Self-flange  
5185TBZ=Tuscan Bronze Self-flange



#### 5186 Open Splay, Self-flange

OD: 6-5/8" [168mm]

5186WH=White Self-flange  
5186SN=Satin Nickel Self-flange  
5186TBZ=Tuscan Bronze Self-flange

### Accessory

GA-ATH5-6PK=T6-Pack AIR-TITE Ceiling aperture gaskets. Seals gaps around ceiling cut out.

\*Outdoor rated lamp only (purchase separately)