



ML7RAB

Description

ML7RAB

Provides torsion spring mounting capability for housings that do not have torsion spring brackets. 4 pack includes : 4 - Retrofit adapter bands, 16-metal piercing screws, 8 - retrofit lever-action wire nuts

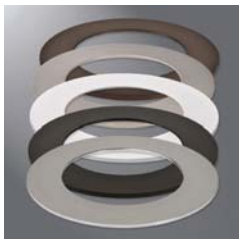


494OPTIC

Description

LENS OVER-OPTIC FOR OPEN LED TRIMS

Optional accessory - lens drops into top of open LED trims (494 series). Precision formed Polymer lens media provides diffusion of LED source brightness. Compatible with: 494SC06, 494H06, 494P06, 494WB06



DESIGNER FINISH TRIM RINGS

Source	Model	Description
TRM490TBZ	Tuscan Bronze	<ul style="list-style-type: none"> •Optional accessory •Die-cast trim ring •Thinner Profile provides subtle ceiling appearance (.120" at OD and .180" at ID)
TRM490PC	Polished Chrome	
TRM490WH	White	
TRM490BK	Black	
TRM490SN	Satin Nickel	



OT490WH

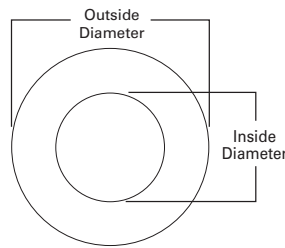
Description

OVERSIZE TRIM RING, WHITE

Optional accessory - oversize trim ring is designed to replace the standard Halo LED trim ring. For direct attachment to ML7x LED Modules: 600 Series, 900 Series, and 1200 Series.

Dimensions: I.D. = 5-1/8" and O.D. = 9-1/4".

Precision die-cast aluminum ring may be used to hide gaps in the ceiling when retrofitting Halo LED or for covering cut-out irregularities.



Specifications and dimensions subject to change without notice. Consult your Cooper Lighting Solutions Representative or visit www.cooperlighting.com for available options, accessories and ordering information.