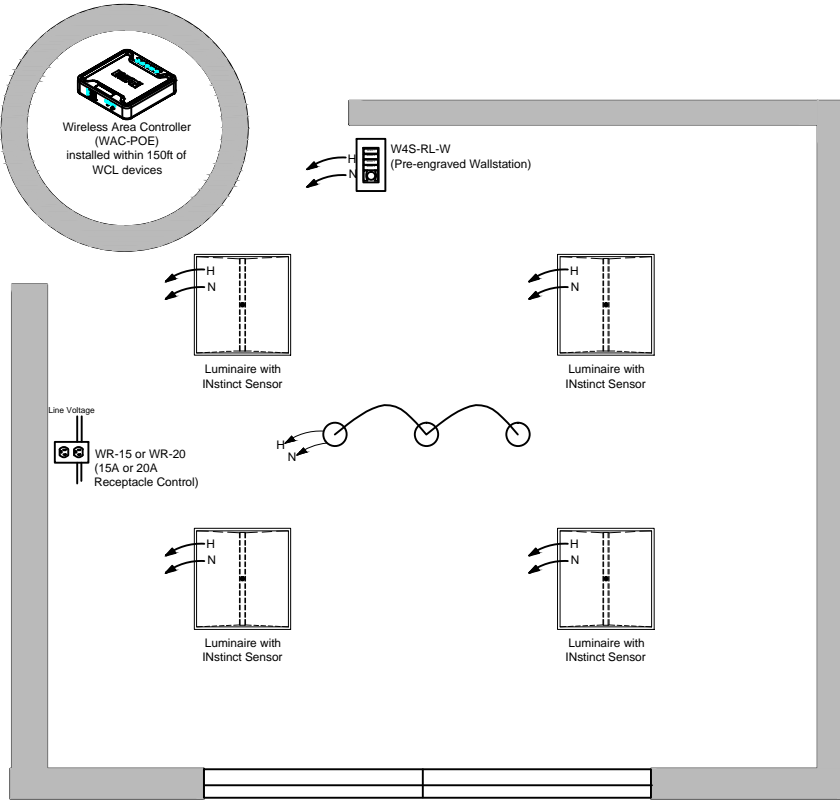




Wireless Connected Lighting

CA TITLE 24 2013 DESIGN GUIDE
 CONFERENCE ROOM WITH RECESSED FIXTURES, 0-10V DIMMING AND DEMAND RESPONSE



SEQUENCE OF OPERATIONS:

LIGHTING

- 0-10V LIGHTING LOADS
- UP TO 3 DIMMING ZONES
- OUT OF THE BOX 75% HIGH END TRIM

OCCUPANCY

- OUT OF THE BOX AUTO ON TO 50%
- OPTIONAL VACANCY MODE
- OPTIONAL AUTO ON TO SCENE
- PLUG LOAD TURNS ON WITH OCCUPANCY
- AUTOMATIC OFF OF LIGHTING AND PLUG LOAD ON VACANCY

DAYLIGHTING

- CONTINUOUS DIMMING TO OFF
- INDIVIDUAL LUMINAIRE DAYLIGHT DIMMING
- DAYLIGHTING NOT REQUIRED FOR INDOOR OFFICES
- NOT REQUIRED IN SPACES WITHOUT WINDOWS THAT ARE LESS THAN 120W.

MANUAL CONTROLS

- TOP OR DOMINANT BUTTON HALF LIGHTS (SETS LIGHTS TO 50% OR LESS)
- REMAINING BUTTONS TRIGGER SCENES
- RAISE
- LOWER
- ALL OFF

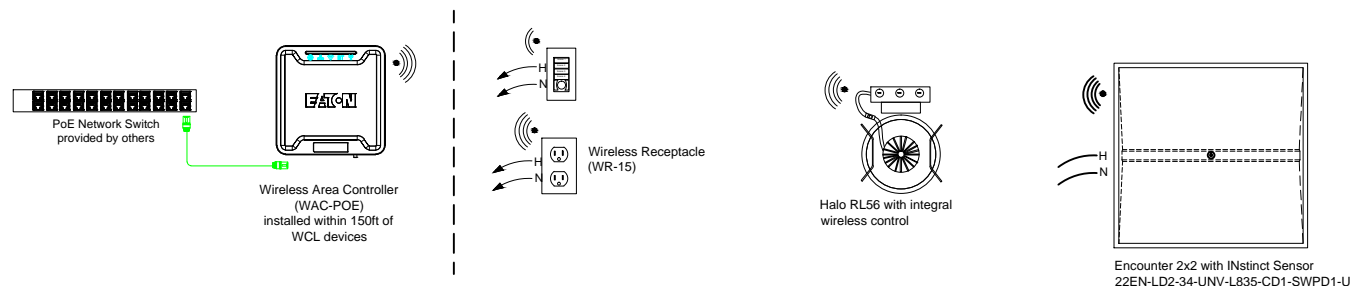
ADDITIONAL FEATURES

- POWER MEASUREMENT REPORTING THROUGH MOBILE APPLICATION
- AUTOMATIC DEMAND RESPONSE AVAILABLE FROM WIRELESS AREA CONTROLLER
- SCHEDULING OF PARTIAL OFF LIGHT LEVELS AND TIMES FROM WIRELESS AREA CONTROLLER
- UL924 EMERGENCY CONTROL CAPABILITIES AVAILABLE VIA LUMINAIRE BATTERY BACKUP

Bill of Materials

Qty	Catalog #	Description
1	WAC-POE	Wireless Area Controller
1	W4S-RL-W	4 Small button scene wallstation
1	WR-15 or WR-20	Wireless Receptacle
1	TM-SWPD1	Wireless Tile Mount Sensor
3	RL56	Halo Recessed LED with wireless
4	22EN-LD2-34-UNV-L835-CD1-SWPD1-U	Encounter 2x2 with INstinct Sensor

TYPICAL WIRING DETAIL



Design Consideration:	Best Practice:	Best Practice:
Gateway/WAC range	150 feet to 250 feet LOS	300 feet LOS
Number of interior walls	2 walls	3 walls
Distance from WAC to 1st WCL device	150 feet	200 feet
Distance between WCL devices	75 feet	150 feet
Number of hops from WAC	4 hops	5 hops
Number of areas per WAC	16	16
Number of zones per area	3	16
Number of scenes per area	6	10

Manually Switched ON/OFF

Manual Dimmer

Occupancy Sensor

Daylighting Control

Receptacle Control

Demand Response

UL924
UL924
(Energy Back-up Circuit)

130.1(a)
130.1(b)

130.1(a)
130.1(b)
130.1(c)1
130.5(a)

130.1(c)
130.5(d)

130.1(d)
140.6 (d)

130.5 (d)

130.1(e)
130.4
130.1(c)6c