



LF2005

Description

50W ARCHITECTURAL FLEX TRANSFORMER
 Allows use of Linea track fixtures and low voltage pendants on 120V circuit of Architectural Flexible Track
 Finishes: White (P) and Black (MB)



L2005

Description

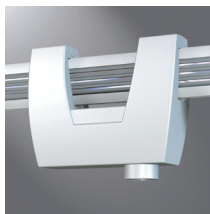
50W POWER-TRAC TRANSFORMER
 Allows use of Linea track fixtures and pendants on Halo Power-Trac or Lazer Track
 Finishes: White (P), Matte Black (MB), Aluminum Haze (AH)



LF2LV

Description

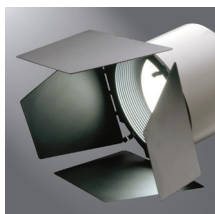
ARCHITECTURAL FLEX CONVERTER
 Allows use of Linea track fixtures and low voltage pendants on 12V circuit of Architectural Flexible Track
 Finishes: Aluminum Haze (AH)



LF2006

Description

50W ARCHITECTURAL FLEX TRANSFORMER
 Allows use of Linea track fixtures and pendants on 120V circuit of Halo Architectural Flexible Track
 Finishes: Aluminum Haze (AH)



L1982MB

Description

BARN DOOR SHUTTERS
 Barn Door Shutters for LV304 units control and shape light beam.



L100MB

Description

HEX CELL LOUVER
 Louvers control the light beam and prevent unwanted spill light. 2" nominal diameter. Provides for a 45° cutoff.



MR16 COLOR FILTERS

Source	Model	Source	Model
L112	Red Gel Filter	L124	Daylight Blue, Dichroic Filter
L114	Ultraviolet Filter reduces UV impact	L125	Blue, Dichroic Filter
L120	Red, Dichroic Filter	L127	Cosmetic (2700°K) Dichroic Filter
L121	Amber, Dichroic Filter	L130	Yellow Gel Filter
L122	Yellow, Dichroic Filter	L131	Amber Gel Filter
L123	Green, Dichroic Filter		

For use with MR16 lampholders. 2" nominal diameter



OPTICAL FILTERS

Source	Model	Description
L110N	Diffuse Sand Blasted Lens	Provides an even beam spread from MR16 lamps — useful in wall washing.
L111	Soft Focus Lens	Smooths irregular beam patterns without affecting illumination levels and beam angles.
L113	Prismatic Spread Lens	Broadens MR16 lamp beams. Creates a wide, uniform distribution of light.
L115	Linear Spread Lens	Fans the MR16 beam to produce a wide, rectangular pattern.

For use with MR16 lampholders. Changes and shapes light beam. 2" nominal diameter