

# Aluminum Poles

## DESCRIPTION

The Metroline pole was designed specifically to support the Metroline LED Luminaire. The Metroline LED luminaire combines form with function to create a dayform appearance that complements the city landscape. High efficiency LED optics enable visibility turned to street or pathway environments.

<b>Catalog #</b>		<b>Type</b>	
<b>Project</b>		<b>Date</b>	
<b>Comments</b>			
<b>Prepared by</b>			

## DIMENSIONS

### DESIGN CONSIDERATIONS

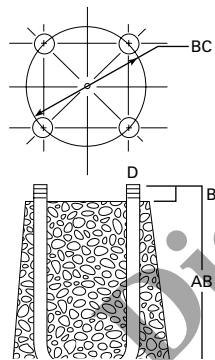
Wind induced vibrations resulting from steady, unidirectional winds and other aerodynamic forces, as well as vibration and coefficient of height factors for non-grounded mounted installations (e.g., installations on bridges or buildings) are not included in this document. The information contained herein is for general guidance only and is not a replacement for professional judgement. Consult with a professional, and local and federal standards, before ordering to ensure product is appropriate for the intended purpose and installation location. Also, please review Cooper Lighting Solutions' Light Pole White Paper for risk factors and design considerations. [Learn more.](#)

Specifications and dimensions subject to change without notice. Consult your lighting representative at Cooper Lighting Solutions or visit [www.cooperlighting.com](http://www.cooperlighting.com) for available options, accessories and ordering information.

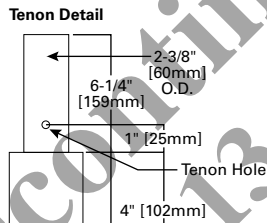
### FEATURES

- ASTM grade steel base plate and shaft
- Tenon mounting
- Optional Festoon Provision for GFCI
- Optional transformer base with shroud
- Options to meet Buy American and other domestic preference requirements.

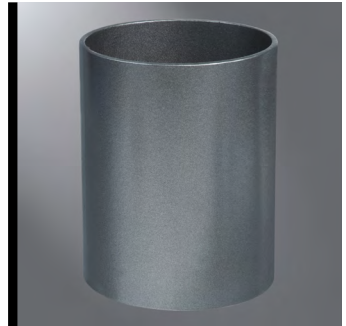
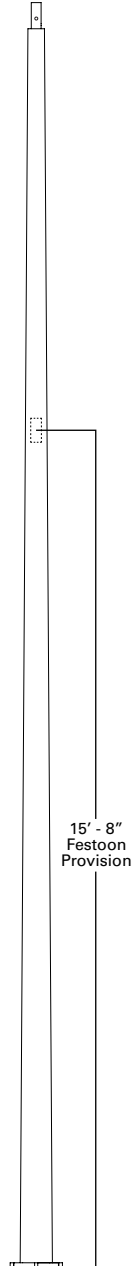
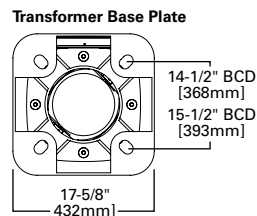
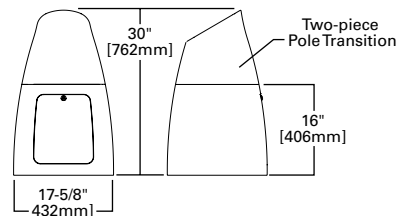
### ANCHORAGE DATA



### POLE TENON



### DECORATIVE TRANSFORMER BASE WITH SHROUD (OPTIONAL)



**ML**  
**METROLINE POLE**



**ORDERING INFORMATION**

Sample Number: ML-RTA-27-AP

Product Family	Material	Pole Height <sup>1</sup>	Finish	Options	Base Option	Accessories (Order Separately) <sup>3,6</sup>
<b>ML</b> =Metroline Pole <b>BAA-ML</b> =Metroline Pole Buy American Act Compliant <sup>7</sup> <b>TAA-ML</b> =Metroline Pole Trade Agreements Act Compliant <sup>7</sup>	<b>RTA</b> =Round Tapered Aluminum <b>RTS</b> =Round Tapered Steel	<b>27</b> =27' <b>30</b> =30'	<b>AP</b> =Grey <b>BK</b> =Black <b>BZ</b> =Bronze <b>DP</b> =Dark Platinum <b>GM</b> =Graphite Metallic <b>WH</b> =White <b>CC</b> =Custom Color	<b>[BLANK]</b> =None <b>FST</b> =Festoon Provision for GFI <sup>2</sup>	<b>[BLANK]</b> =None <b>TXBASE</b> =Optional Decorative Transformer Base with Shroud <sup>4,5</sup>	<b>ML-RSC-XX</b> =RTA Round Base Cover <sup>6</sup> <b>ML-RDC-XX</b> =RTS Round Base Cover <sup>6</sup>

**NOTES:** 1. Available in other mounting heights upon request. Extended lead times may apply. 2. Located at 15'-8" above pole base on right side of pole when aimed from streetside. 3. Replace XX with color designation. 4. Must use ML-RTS27 5. Required when 347V or 480V luminaire is ordered. 6. Not available when transformer base is ordered. 7. Only product configurations with these designated prefixes are built to be compliant with the Buy American Act of 1933 (BAA) or Trade Agreements Act of 1979 (TAA), respectively. Please refer to [DOMESTIC PREFERENCES](#) website for more information. Components shipped separately may be separately analyzed under domestic preference requirements. 8. Accessories sold separately will be separately analyzed under domestic preference requirements. Consult factory for further information.

**Effective Projected Area**

Mounting Height (Feet)	Catalog Number <sup>1,2</sup>	Wall Thickness (Inches)	Base Square (Inches) <sup>2</sup>	Bolt Circle Diameter (Inches)	Anchor Bolt Projection (Inches) <sup>2</sup>	Shaft Size (Inches) <sup>2</sup>	Anchor Bolt Diameter x Length x Hook (Inches)	Maximum Effective Projected Area (Square Feet) <sup>3</sup>				Maximum Fixture Load / Includes Bracket (Pounds)
								80 mph	90 mph	100 mph	110 mph	
<b>MH</b>			<b>S</b>	<b>BC</b>	<b>BP</b>	<b>B</b>	<b>D x AB x H</b>					
27	ML-RTS-27	0.180	11.50	11	4.25	8	1 x 36 x 4	28	23	19	16	400
27	ML-RTA-27	0.188	12.06	11.25	4.13	8	1 x 36 x 4	15.5	11.7	9.1	7.3	150
30	ML-RTS-30	0.120	11.50	11	4.13	8	1 x 36 x 4	18.9	14.9	12	9.5	300
30	ML-RTA-30	0.188	12.06	11.25	4.13	8	1 x 36 x 4	12.4	9.2	7.1	5.6	150

**NOTES:** 1. Catalog number includes pole with hardware kits. Anchor bolts not included. Before installing, make sure proper anchor bolts and templates are obtained. 2. Shaft size, base square, anchor bolts and projections may vary slightly. All dimensionals nominal. 3. Loads are mounted with a centroid 2-1/2 feet above the top of pole with horizontal eccentricity of 2 feet.

Discontinued  
01-13-2022