

DESCRIPTION

COOPER LIGHTING SOLUTIONS - METALUX®



The Ovation Series is a complete family of recessed direct/indirect luminaires featuring pleasant modern architectural styling, computerdesigned optics and the latest energy efficient lamp and ballast technology. The luminaire combines a matte white indirect reflector and a perforated direct lamp shield to provide optimum brightness control. All components are located above the ceiling plane for a clean architectural appearance in the finished space. Carefully balanced design elements combine to provide an efficient and exciting alternative to traditional general lighting. Ovation is a series of high performance luminaires designed for a variety of architectural and commercial applications.

| Catalog # | | Type |
|-------------|--|------|
| Project | | |
| Comments | | Date |
| Prepared by | | |

SPECIFICATION FEATURES

Construction

Nominal 6" deep housing is die formed of code gauge, prime cold rolled steel. Heavy gauge end plates are securely attached with screws for strength and rigidity and the elimination of gaps. Four auxiliary fixture end suspension points are provided. KOs for continuous row wiring. Large access plate for supply connection.

Electrical*

Ballasts are Class "P" and are positively secured. Rotor-lock lampholders ensure positive lamp retention. UL/CUL listed. Suitable for damp locations.

Ballast Access

Ballast can be removed from below without tools.

Finish

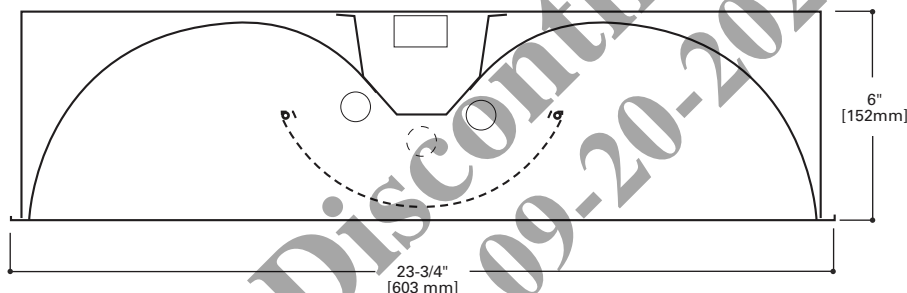
Durable cold rolled steel with multistage, iron phosphate pretreatment and white enamel finish to ensure maximum bonding and rust inhibition.

Reflectors

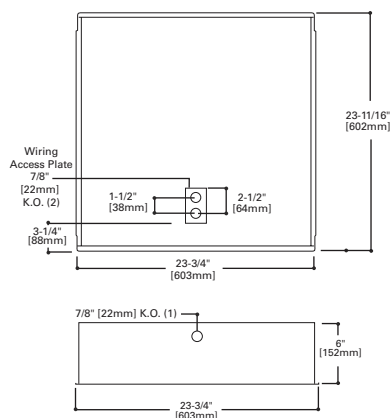
Indirect reflector has high reflectance baked matte white enamel finish for luminous uniformity. Positively retained direct lamp shield is constructed of heavy gauge perforated steel with high reflectance painted after fabrication finish and milky white overlay dif-fuser for visual comfort. All reflectors are precision formed in a computer-controlled operation.

Controls

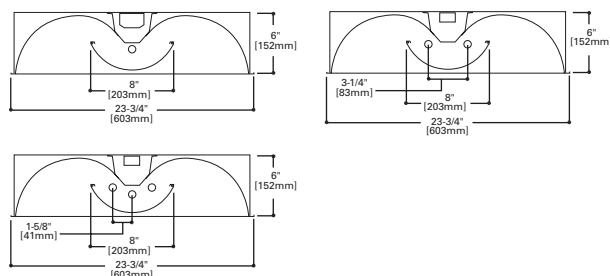
Fifth Light ballast options are offered for both 0-10V continuous dimming and DALI applications. Combine with energy-saving products like occupancy sensors, daylighting controls, and lighting relay panels from Cooper Lighting Solutions (www.cooperlighting.com) to maximize energy savings.



MOUNTING DATA



LAMP CONFIGURATIONS



CEILING COMPATIBILITY

| G Grid/Lay-in Standard | T Slot Grid | F Drywall Frame Kit | Ceiling Type** | Trim Type |
|------------------------------|----------------|---------------------------|--|------------------------------|
| | | | Exposed Grid Concealed T Slot Grid Flange | G G or T G or T *** |



2RDI

114T5, 214T5,
314T5
124T5HO
224T5HO
324T5HO

2' X 2' RECESSED

T5 OR T5HO LAMPS
DIRECT/INDIRECT
CENTER-MOUNT

Ovation™

powered by
fifthlight
technology

ENERGY DATA

Input Watts:

EB Ballast & STD Lamps

114T5 (19), 214T5 (38)

314T5 (57), 124T5 (25)

224T5 (52), 324T5 (78)

Luminaire Efficacy Rating

LER = FL53

Catalog Number: 2RDI-214T5RP

**Yearly Cost of 1000 lumens,
3000 hrs at .08 KWH = \$4.53**

*Reference the lamp/ballast data in the
Technical Section for specific lamp/
ballast requirements.

**Consult Pre Sales Technical Support.

***See Drywall Frame Kit Accessory

**LAMPS CONTAIN MERCURY. DISPOSE ACCORDING
TO LOCAL, STATE OR FEDERAL LAWS**

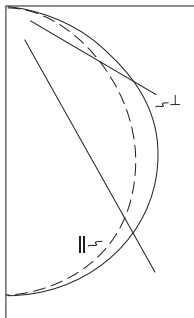
LINEAR DISCONNECT

Safe and convenient means of
disconnecting power.



ADF091049
2015-02-03 15:19:55

PHOTOMETRICS



2RDI-214T5RP
Electronic Ballast
F14T5/835 Lamps
1350 Lumens

Spacing criterion:
(II) 1.2 x mounting
height, (I) 1.3 x
mounting height
Efficiency 73.3%

Test Report:
2RDI214T5RP.IES

LER = FL53

Yearly Cost of 1000
lumens, 3000 hrs at
.08 KWH = \$4.53

Coefficients of Utilization

| Effective floor cavity reflectance | | | | | | | | | | 20% | | | | | | | | | | | |
|------------------------------------|-----|----|----|----|-----|----|----|----|-----|-----|----|----|-----|----|----|----|-----|----|--|--|----|
| rc | 80% | | | | 70% | | | | 50% | | | | 30% | | | | 10% | | | | 0% |
| rw | 70 | 50 | 30 | 10 | 70 | 50 | 30 | 10 | 50 | 30 | 10 | 50 | 30 | 10 | 50 | 30 | 10 | 0 | | | |
| RCR | | | | | | | | | | | | | | | | | | | | | |
| 0 | 87 | 87 | 87 | 87 | 85 | 85 | 85 | 85 | 81 | 81 | 81 | 78 | 78 | 78 | 75 | 75 | 75 | 73 | | | |
| 1 | 79 | 76 | 73 | 70 | 77 | 74 | 71 | 69 | 71 | 69 | 66 | 68 | 66 | 64 | 66 | 64 | 62 | 61 | | | |
| 2 | 72 | 66 | 61 | 56 | 70 | 64 | 60 | 56 | 62 | 58 | 54 | 59 | 56 | 53 | 57 | 54 | 52 | 50 | | | |
| 3 | 66 | 58 | 51 | 47 | 64 | 56 | 51 | 46 | 54 | 49 | 45 | 52 | 48 | 45 | 50 | 47 | 44 | 42 | | | |
| 4 | 60 | 51 | 44 | 39 | 58 | 50 | 44 | 39 | 48 | 43 | 38 | 46 | 42 | 38 | 45 | 41 | 37 | 36 | | | |
| 5 | 55 | 45 | 39 | 34 | 53 | 44 | 38 | 33 | 43 | 37 | 33 | 41 | 37 | 33 | 40 | 36 | 32 | 31 | | | |
| 6 | 51 | 41 | 34 | 29 | 49 | 40 | 34 | 29 | 39 | 33 | 29 | 37 | 32 | 29 | 36 | 32 | 28 | 27 | | | |
| 7 | 47 | 37 | 30 | 26 | 46 | 36 | 30 | 26 | 35 | 29 | 25 | 34 | 29 | 25 | 33 | 28 | 25 | 24 | | | |
| 8 | 44 | 34 | 27 | 23 | 42 | 33 | 27 | 23 | 32 | 27 | 23 | 31 | 26 | 23 | 30 | 26 | 22 | 21 | | | |
| 9 | 41 | 31 | 25 | 21 | 40 | 30 | 24 | 20 | 29 | 24 | 20 | 29 | 24 | 20 | 28 | 23 | 20 | 19 | | | |
| 10 | 38 | 28 | 22 | 19 | 37 | 28 | 22 | 19 | 27 | 22 | 18 | 27 | 22 | 18 | 26 | 21 | 18 | 17 | | | |

Zonal Lumen Summary

| Zone | Lumens | %Lamp | %Fixture |
|-------|--------|-------|----------|
| 0-30 | 513 | 19.0 | 25.9 |
| 0-40 | 848 | 31.4 | 42.9 |
| 0-60 | 1533 | 56.8 | 77.5 |
| 0-90 | 1977 | 73.2 | 100.0 |
| 0-180 | 1977 | 73.2 | 100.0 |

Luminance Data

| Angle in Deg | Average 0-Deg cd/sm | Average 45-Deg cd/sm | Average 90-Deg cd/sm |
|--------------|---------------------|----------------------|----------------------|
| 45 | 1704 | 1896 | 2044 |
| 55 | 1575 | 1893 | 2080 |
| 65 | 1391 | 1836 | 2083 |
| 75 | 1186 | 1622 | 1768 |
| 85 | 864 | 1130 | 1296 |

Candela

| Angle | Along II | 45° | Across ⊥ |
|-------|----------|-----|----------|
| 0 | 637 | 637 | 637 |
| 5 | 641 | 641 | 643 |
| 10 | 637 | 639 | 642 |
| 15 | 625 | 630 | 636 |
| 20 | 605 | 614 | 624 |
| 25 | 578 | 594 | 609 |
| 30 | 545 | 568 | 589 |
| 35 | 506 | 537 | 564 |
| 40 | 463 | 502 | 534 |
| 45 | 416 | 463 | 499 |
| 50 | 365 | 421 | 459 |
| 55 | 312 | 375 | 412 |
| 60 | 258 | 325 | 359 |
| 65 | 203 | 268 | 304 |
| 70 | 152 | 211 | 226 |
| 75 | 106 | 145 | 158 |
| 80 | 63 | 84 | 94 |
| 85 | 26 | 34 | 39 |
| 90 | 0 | 0 | 0 |

ORDERING INFORMATION

SAMPLE NUMBER: 2RDI-214T5RP-120V-EBT1-U

| | | | | | |
|--|--|--|--|---|---|
| Rating Blank =Standard NY =New York City Rated ATW-SW4 =Chicago Rated | Number of Lamps 1 =1 Lamp 2 =2 Lamps 3 =3 Lamps | Lamp Shield X =Solid Matte White RP =Round Perforated White Steel | Ballast Type EBT __=T5 or T5HO Electronic Program Rapid Start. Total Harmonic Distortion < 10%. Standard Ballast Factor=1.0 Ballast/FactorType EBT_N =T5 Electronic Program Rapid Start. Total Harmonic Distortion < 10%. Normal Ballast Factor=.90 ⁽³⁾ EBT_H =T5 Electronic Program Rapid Start. Total Harmonic Distortion < 10%. High Ballast Factor=1.15 ⁽⁵⁾ EBT_NDIM =T5 Electronic Program Rapid Start. Total Harmonic Distortion < 10%. Step Dimming, Normal Ballast Factor=.95-1.0 ⁽⁴⁾ EBT_HDIM =T5 Electronic Program Rapid Start. Total Harmonic Distortion < 10%. Step Dimming, High Ballast Factor=1.15 0-10V Dimming Ballasts ⁽⁷⁾ 5LTV5 __=T5 0-10V Program Rapid Start. Total Harmonic Distortion < 10%. Ballast Factor 1.0 ⁽¹¹⁾ 5LTVS5 __=T5 0-10V Spec Grade Program Rapid Start. Total Harmonic Distortion < 10%. Ballast Factor 1.0 ^{(8), (10)} Fifth Light DALI Ballasts ⁽⁶⁾ 5LT5 __=T5 DALI Program Rapid Start. Total Harmonic Distortion < 10%. Ballast Factor 1.0 | Options RIF1 =Radio Interference Suppressor REP =Riveted Endplates LSC =Lamp Shield Cable ST =Semi-Specular Tannenbaum | Packaging U =Unit Pack PALC =Palletized Fixtures in Carton |
| Width 2 = 2' Width | Wattage 14T5 =14W T5 (24") ⁽¹⁾ 24T5 =24W T5HO (24") ⁽¹⁾ | Voltage ⁽²⁾ 120V =120 Volt 277V =277 Volt UNV =Universal Voltage 120-277 | Options GL =Single Element Fuse GM =Double Element Fuse Lamps =Lamps installed Flex =Flex Installed EL =Emergency Installed | ACCESSORIES EO-CLIP-U =T-BAR Safety Earthquake Clips ⁽⁹⁾ DF-22-W =Drywall Frame Kit | |
| Series RDI =Ovation Series (Recessed Direct/Indirect) | Trim Type Blank =Grid/Lay-in (Standard) | Lamp Position Blank =Center Mounted Lamps (Standard) | Number of Ballasts 1 =1 Ballast 2 =2 Ballasts ⁽⁹⁾ 3 =3 Ballasts | | |

NOTES: ⁽¹⁾ 2' x 2' and 2' x 4' Center Lamp Shield models only. ⁽²⁾ Products also available in non-US voltages and frequencies for international markets. ⁽³⁾ .90 ballast factor available for 2 or 3 14W T5 or 28W T5 lamps only. ⁽⁴⁾ 1-Lamp step dimming ballast in a Normal Ballast factor not available. 2-Lamp ballast will not operate 1-Lamp. ⁽⁵⁾ 1-Lamp ballast in a High Ballast factor not available. ⁽⁶⁾ For a complete listing of Fifthlight Technology products and other solutions from Cooper Lighting Solutions, visit www.cooperlighting.com. ⁽⁷⁾ 0-10V ballast do not include DALI feature. Please select DALI ballast for use with Fifth Light system. ⁽⁸⁾ Specification grade 0-10V dimming ballast are NEMA pre-mium and CEE listed. They are compatible with low mercury and energy saving lamps. ⁽⁹⁾ LAO is necessary for 2 bal-last 0-10V option. ⁽¹⁰⁾ Specification Grade 0-10V ballast not offered in 3 or 4-lamp versions. ⁽¹¹⁾ Standard 0-10V ballast not offered in 3 or 4-lamp versions.

For complete product data, reference the Fluorescent Specification binder. Specifications & dimensions subject to change without notice. Consult your Cooper Lighting Solutions Representative for availability and ordering information.

SHIPPING DATA

| Catalog No. | Wt. |
|-------------|---------|
| 2RDI-114T5 | 17 lbs. |
| 2RDI-214T5 | 17 lbs. |
| 2RDI-314T5 | 17 lbs. |