

The Ovation Series is a complete family of recessed direct/indirect luminaires featuring pleasant modern architectural styling, computerdesigned optics and the latest energy efficient lamp and ballast technology. The luminaire combines a matte white indirect reflector and a frosted white acrylic lamp shield. All components are located above the ceiling plane for a clean architectural appearance in the finished space. Carefully balanced design elements combine to provide an efficient and exciting, high performance alternative to traditional general lighting. Ovation is an excellent choice for a wide variety of commercial applications.

SPECIFICATION FEATURES

Construction

Nominal 6" deep housing is die formed of code gauge, prime cold rolled steel. Heavy gauge end plates are securely attached with screws for strength and rigidity and the elimination of gaps. Four auxiliary fixture end suspension points are provided. KOs for continuous row wiring. Large access plate for supply connection.

Electrical*

Ballasts are Class "P" and are positively secured. Rotor-lock lampholders ensure positive lamp retention. UL/CUL listed. Suitable for damp locations.

Ballast Access

Ballast can be removed from below without tools.

Finish

Durable cold rolled steel with multistage, iron phosphate pretreatment and white enamel finish to ensure maximum bonding and rust inhibition.

Reflectors

Indirect reflector has high reflectance baked matte white enamel finish for luminous uniformity. Positively retained direct lamp shield is constructed of frosted white acrylic with linear refractors. All reflectors are precision formed in a computer-controlled operation.

Catalog #

Type

Project

Comments

Date

Prepared by



2RDI

114T5, 214T5,
314T5
124T5HO
224T5HO
324T5HO

2' X 2' RECESSED

T5 OR T5HO LAMPS
DIRECT/INDIRECT
CENTER-MOUNT
FROSTED ACRYLIC BASKET

Ovation™

powered by
fifthlight
technology

ENERGY DATA

Input Watts:

EB Ballast & STD Lamps

114T5 (19), 214T5 (38), 314T5 (57)
124T5 (25), 224T5 (52), 324T5 (78)

Luminaire Efficacy Rating

LER = FL62

Catalog Number: 2RDI-214T5FLS

**Yearly Cost of 1000 lumens,
3000 hrs at .08 KWH = \$3.89**

*Reference the lamp/ballast data in the Technical Section for specific lamp/ballast requirements.

**Consult Pre Sales Technical Support.

***See Drywall Frame Kit Accessory

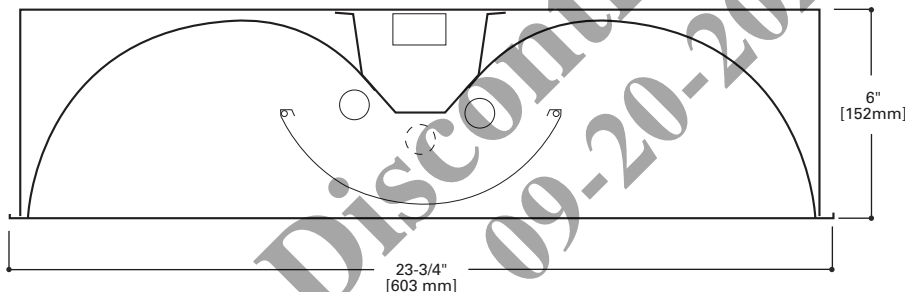
LAMPS CONTAIN MERCURY. DISPOSE ACCORDING TO LOCAL, STATE OR FEDERAL LAWS

LINEAR DISCONNECT

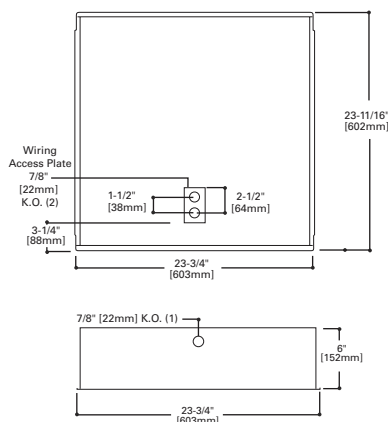
Safe and convenient means of disconnecting power.



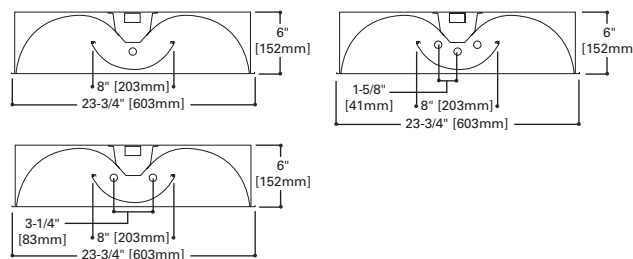
ADF032743
2015-02-03 15:39:10



MOUNTING DATA



LAMP CONFIGURATIONS



CEILING COMPATIBILITY

G
Grid/Lay-in
Standard

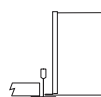
T
Slot Grid

F
Drywall Frame
Kit

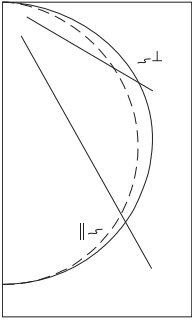
**Ceiling
Type****
Exposed Grid
Concealed T
Slot Grid
Flange

**Trim
Type**

G
G or T
G or T



PHOTOMETRICS


2RDI-214T5FLS
 Electronic Ballast

 (2) F14T5/835 Lamps
 1200 Lumens

 Spacing criterion:
 (H) 1.3 x mounting
 height, (L) 1.3 x
 mounting height

Efficiency 87.3%

 Test Report:
 2RDI214FLS.IES

LER = FL62

 Yearly Cost of 1000
 lumens, 3000 hrs at
 .08 KWH = \$3.89

Coefficients of Utilization

Effective floor cavity reflectance										20%													
rc	80%				70%				50%				30%				10%				0%		
rw	70	50	30	10	70	50	30	10	50	30	10	50	30	10	50	30	10	50	30	10	0		
RCR																							
0	104	104	104	104	101	101	101	101	97	97	97	93	93	93	89	89	89	87					
1	94	90	86	82	92	88	84	81	84	81	78	81	78	76	77	75	74	72					
2	85	78	71	66	83	76	70	65	73	68	64	70	66	62	67	64	61	59					
3	77	68	60	54	75	66	60	54	64	58	53	61	56	52	59	55	51	49					
4	71	60	52	46	69	59	51	45	56	50	45	54	49	44	52	48	44	42					
5	65	53	45	39	63	52	45	39	50	44	38	49	43	38	47	42	38	36					
6	60	48	40	34	58	47	39	34	45	39	34	44	38	33	42	37	33	31					
7	55	43	35	30	54	43	35	30	41	34	30	40	34	29	39	33	29	27					
8	52	39	32	27	50	39	32	26	38	31	26	37	31	26	35	30	26	24					
9	48	36	29	24	47	36	29	24	35	28	24	34	28	24	33	27	23	22					
10	45	33	26	22	44	33	26	22	32	26	21	31	25	21	30	25	21	20					

Zonal Lumen Summary

Zone	Lumens	%Lamp	%Fixture
0-30	527	21.9	25.2
0-40	871	36.3	41.6
0-60	1585	66.1	75.7
0-90	2094	87.3	100.0
0-180	2094	87.3	100.0

Typical VCP Percentages

Room Size (Ft.)	Height Along		Height Across	
	8.5'	10.0'	8.5'	10.0'
20 x 20	63	70	58	67
30 x 30	57	62	53	57
30 x 60	53	56	46	49
60 x 30	59	63	57	60
60 x 60	54	55	49	50

Candela

Angle	Along H	45°	Across L
0	668	668	668
5	666	666	666
10	658	659	660
15	645	647	650
20	625	630	635
25	600	608	616
30	570	581	593
35	535	550	565
40	496	515	535
45	453	476	500
50	406	434	462
55	354	389	419
60	300	340	369
65	243	287	313
70	185	230	251
75	130	171	186
80	78	111	120
85	34	54	58
90	2	3	3

ORDERING INFORMATION

SAMPLE NUMBER: 2RDI-214T5FLS-120V-EBT1-U

Width 2=2' Width	Number of Lamps 1=1 Lamp 2=2 Lamp 3=3 Lamp	Voltage ⁽²⁾ 120V=120 Volt 277V=277 Volt 347V=347 Volt UNV=Universal Voltage 120-277	Ballast Type EBT__=T5 or T5HO Electronic Program Rapid Start. Total Harmonic Distortion < 10%. Standard Ballast Factor=1.0 Ballast/Factor Type EBT__N=T5 Electronic Program Rapid Start. Total Harmonic Distortion < 10%. Normal Ballast Factor=.90 ⁽⁴⁾ EBT__H=T5 Electronic Program Rapid Start. Total Harmonic Distortion < 10%. High Ballast Factor=1.15 ⁽⁶⁾ EBT__NDIM=T5 Electronic Program Rapid Start. Total Harmonic Distortion < 10%. Step Dimming, Normal Ballast Factor=.95-1.0 ⁽⁶⁾ EBT__HDIM=T5 Electronic Program Rapid Start. Total Harmonic Distortion < 10%. Step Dimming, High Ballast Factor=1.15 0-10V Dimming Ballasts ⁽⁸⁾ 5LTV5__=T5 0-10V Program Rapid Start. Total Harmonic Distortion < 10%. Ballast Factor 1.0 ⁽¹²⁾ 5LTVS5__=T5 0-10V Spec Grade Program Rapid Start. Total Harmonic Distortion < 10%. Ballast Factor 1.0 ^{(8), (11)} Fifth Light DALI Ballasts ⁽⁷⁾ 5LTV5__=T5 DALI Program Rapid Start. Total Harmonic Distortion < 10%. Ballast Factor 1.0	Options RIF1=Radio Interference Suppressor REP=Riveted Endplates, for use in New York City. ST=Semi-Specular Tannenbaum Main Reflector	Packaging U=Unit Pack PALC=Job Pack, in carton
Series RDI=Ovation Series (Recessed Direct/Indirect)	Wattage 14T5=14W T5 (24") ⁽¹⁾ 24T5=24W T5HO (24") ⁽¹⁾	Options Lamps=Lamps Installed GL=Single Element Fuse GM=Double Element Fuse Flex=Flex Installed EL=Emergency Installed			
Trim Type Blank=Grid/Lay-in (Standard)	Lamp Shield FLS=Frosted Lamp Shield				
Lamp Position Blank=Center Mounted Lamps (standard)					

NOTES: ⁽¹⁾ 2' x 2' and 2' x 4' Center Lamp Shield models only. ⁽²⁾ Products also available in non-US voltages and frequencies for international markets. ⁽³⁾ An EQ Grid Clip is recommended for all 9/16" ceiling systems. Four required per fixture. ⁽⁴⁾ .90 ballast factor available for 2 or 3 14W T5 or 28W T5 lamps only. ⁽⁵⁾ 1-Lamp step dimming ballast in a Normal Ballast factor not available. 2-Lamp ballast will not operate 1-Lamp. ⁽⁶⁾ 1-Lamp ballast in a High Ballast factor not available. ⁽⁷⁾ For a complete listing of Fifthlight Technology products and other solutions from Cooper Lighting Solutions, visit www.cooperlighting.com. ⁽⁸⁾ 0-10V ballast do not include DALI feature. Please select DALI ballast for use with Fifth Light system. ⁽⁹⁾ Specification grade 0-10V dimming ballast are NEMA premium and CEE listed. They are compatible with low mercury and energy saving lamps. ⁽¹⁰⁾ LAO is necessary for 2 ballast 0-10V option. ⁽¹¹⁾ Specification Grade 0-10V ballast not offered in 3 or 4-lamp versions. ⁽¹²⁾ Standard 0-10V ballast not offered in 3 or 4-lamp versions.

For complete product data, reference the Fluorescent Specification binder. Specifications & dimensions subject to change without notice. Consult your Cooper Lighting Solutions Representative for availability and ordering information.

ACCESSORIES

EQ-CLIP-U=T-BAR Safety Earthquake Clips ⁽³⁾
DF-22-W=Drywall Frame Kit

SHIPPING DATA

Catalog No.	Wt.
2RDI-114T5FLS	17 lbs.
2RDI-214T5FLS	17 lbs.
2RDI-314T5FLS	17 lbs.