

DESCRIPTION

Corelite's Class A D/I Open Baffle Wall Mount is a direct-indirect fluorescent luminaire with an engineered optical system, which provides a forward throw indirect component. The direct component is provided via an open aperture with white perforated baffle blades. Optional Eclipse Louver features white perforated baffle blades with ribbed diffuse anodized aluminum runners, which reduces visual brightness from normal viewing angles. The Class A D/I Wall may be mounted over 2" x 4" J-Boxes for individual or continuous configurations using 4', 8' and 12' modular sections. Class A D/I Wall is suited for open office perimeters, private offices, conference rooms, corridors and public spaces.

Catalog #		Type
Project		
Comments		Date
Prepared by		

SPECIFICATION FEATURES

A ... Construction

Housing is one piece die-formed cold rolled steel, forming a 6" x 2-7/8" architectural profile. Standard 4'-0", 8'-0", and 12'-0" fixture lengths combine for continuous runs.

B ... End Plates

Standard laser cut 14-gauge cold rolled steel, mechanically attached with no exposed fasteners. Optional die cast aluminum end caps also available.

C ... Louver

Standard white aluminum perforated blades. Optional Eclipse Louver with white perforated blades and ribbed diffuse anodized aluminum runners.

D ... Reflectors

Reflector pan is painted with a high reflectance white powder coat finish.

E ... Electrical

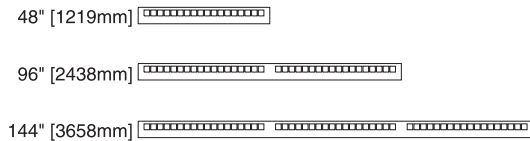
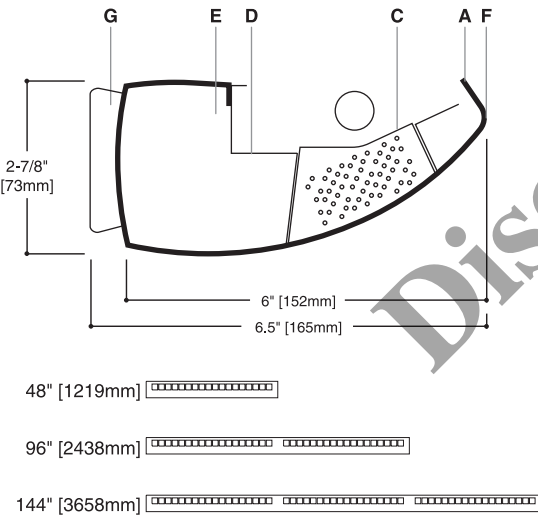
T5/T5HO fixtures are pre-wired with quick wire connectors and use UL listed Class P, T5/T5HO program rapid start universal voltage electronic ballasts, power factor of 97% with less than 10% THD. Fixtures and electrical components certified to UL and CUL standards.

F ... Finish

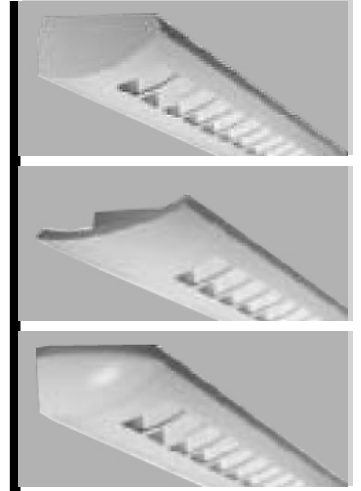
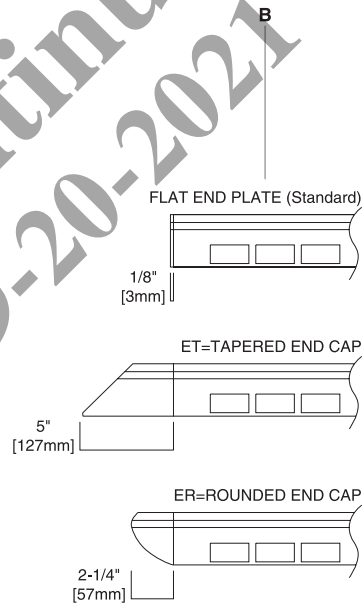
Fixture housings are standard white using electrostatically applied polyester powder coat paint.

G ... Mounting

Fixture mounts directly to existing structure over a 2" x 4" standard electrical box mounted horizontally into the wall. Refer to installation section for details.



*Dimensions do not include end plates.



Class A D/I Open Baffle Wall

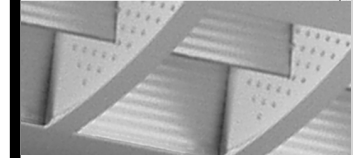
1T5
1T5HO

Wall Mount
Direct/Indirect

Light Distribution
Indirect - 72.8%
Direct - 27.2%

(Perforated Baffle)

ECLIPSE LOUVER (not available for Quick Ship)

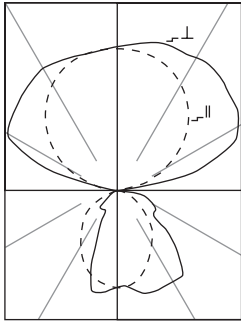


ORDERING INFORMATION

Sample Number: AW-WB-1T5-1C-UNV-SU-WA-32-ET

Series AW: Class A D/I Open Baffle Wall Mount	Optics Up W: White	Number of Lamps 1= 1 Lamp	Number of Circuits 1= 1 Circuit	Wiring B: Battery Pack C: Standard Circuit D: Dimming E: Emergency T: Nightlight Y: Daylight	Voltage 120: 120V 277: 277V 347: 347V UNV: Universal (120V-277V)	Suspension SU-WA: Surface/Wall Mount	Options ER: Rounded End Cap ET: Tapered End Cap
	Optics Down B: Perforated Baffle E: Eclipse Louver	Lamp Type N5: T5 Normal Output T5: T5 High Output				Run Length Individually Mounted Luminaires may be 4', 8', or 12' in length Continuously Mounted Standard row configurations over 12' consist of 8' and 12' sections	

Notes: 1 Not all options available. Please consult your Cooper Lighting Solutions Representative for availability.



Coefficients of Utilization

rc	Effective floor cavity reflectance																				
	20%																				
	80%			70%			50%			30%			10%			0%					
rw	70	50	30	10	70	50	30	10	50	30	10	50	30	10	50	30	10	50	30	10	0
RCR																					
0	93	93	93	93	83	83	83	83	65	65	65	48	48	48	32	32	32	25	25	25	25
1	85	81	78	75	76	72	70	67	57	55	53	42	41	40	29	28	27	21	21	21	21
2	77	71	66	61	69	64	59	55	50	47	44	37	35	34	25	24	23	18	18	18	18
3	71	63	56	51	63	56	51	47	44	41	38	33	31	29	23	22	20	16	16	16	16
4	65	56	49	44	58	50	44	40	39	35	32	30	27	25	21	19	18	14	14	14	14
5	59	49	42	37	53	44	38	34	35	31	28	27	24	21	18	17	15	12	12	12	12
6	55	44	37	32	49	40	34	29	32	27	24	24	21	19	17	15	14	11	11	11	11
7	50	40	33	28	45	36	30	26	28	24	21	22	19	16	15	13	12	09	09	09	09
8	46	36	29	24	41	32	26	22	26	21	18	20	17	14	14	12	11	08	08	08	08
9	43	32	26	21	38	29	23	19	23	19	16	18	15	13	13	11	09	07	07	07	07
10	40	29	23	19	36	27	21	17	21	17	14	16	13	11	12	10	08	06	06	06	06

Candela

Angle	Along II	45°	Across L
0	492	492	492
5	490	480	486
15	457	485	534
25	395	479	545
35	321	440	552
45	241	399	444
55	156	289	244
65	95	153	213
75	49	120	164
85	13	75	96
90	0	60	77
95	34	122	120
105	160	430	461
115	298	547	687
125	422	632	743
135	522	702	777
145	602	733	791
155	659	747	776
165	695	752	764
175	710	730	727
180	719	719	719

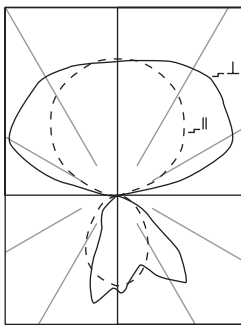
AW-WB-1T5
 (1) FP54/841/HO
 4500 Lumens
 Efficiency 91.3%
 Test Report
 #LS19093

Zonal Lumen Summary

Zone	Lumens	%Lamp	%Fixture
0-30	365	8.12	8.89
0-40	564	12.54	13.73
0-60	908	20.18	22.11
0-90	1116	24.81	27.17
40-90	552	12.27	13.44
60-90	208	4.62	5.07
90-180	2992	66.50	72.83
0-180	4108	91.31	100.00

Luminance Data

Angle in Deg	0-Deg cd/sm	45-Deg cd/sm	90-Deg cd/sm
45	6521	8244	8360
55	5204	6685	5005
65	4301	4166	4887
75	3622	4014	4424
85	2854	3407	3318



Coefficients of Utilization

rc	Effective floor cavity reflectance																				
	20%																				
	80%			70%			50%			30%			10%			0%					
rw	70	50	30	10	70	50	30	10	50	30	10	50	30	10	50	30	10	50	30	10	0
RCR																					
0	85	85	85	85	75	75	75	75	58	58	58	42	42	42	28	28	28	21	21	21	21
1	77	74	71	68	69	66	63	61	51	49	48	37	36	35	25	24	24	18	18	18	18
2	71	65	60	56	63	58	54	51	45	42	40	33	32	30	22	21	21	16	16	16	16
3	65	57	52	47	58	51	47	43	40	37	34	30	28	26	20	19	18	14	14	14	14
4	59	51	45	40	53	46	41	37	36	32	29	27	24	22	18	17	16	12	12	12	12
5	54	45	39	34	48	41	35	31	32	28	25	24	21	20	16	15	14	11	11	11	11
6	50	41	34	30	44	36	31	27	29	25	22	22	19	17	15	13	12	09	09	09	09
7	46	36	30	26	41	33	27	24	26	22	19	19	17	15	14	12	11	08	08	08	08
8	42	33	27	22	38	29	24	21	23	20	17	18	15	13	12	11	09	07	07	07	07
9	39	30	24	20	25	27	22	18	21	17	15	16	13	12	11	09	08	06	06	06	06
10	37	27	21	17	33	24	19	16	19	16	13	15	12	10	10	9	07	06	06	06	06

Candela

Angle	Along II	45°	Across L
0	453	453	453
5	443	474	473
15	409	391	379
25	348	318	408
35	277	315	518
45	202	335	478
55	124	264	222
65	74	108	122
75	39	67	82
85	9	43	43
90	0	34	29
95	32	94	64
105	147	407	370
115	276	517	645
125	393	600	691
135	490	666	736
145	568	687	753
155	627	698	727
165	663	698	706
175	680	687	678
180	681	681	681

AW-WE-1T5
 (1) FP54/841/HO
 4500 Lumens
 Efficiency 83.6%
 Test Report
 #LS19193

Zonal Lumen Summary

Zone	Lumens	%Lamp	%Fixture
0-30	325	7.23	8.65
0-40	499	11.11	13.29
0-60	798	17.75	21.25
0-90	930	20.68	24.75
40-90	430	9.58	11.46
60-90	131	2.93	3.50
90-180	2829	62.88	75.25
0-180	3760	83.57	100.00

Luminance Data

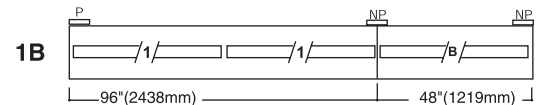
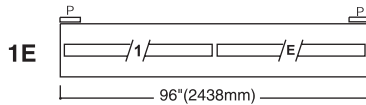
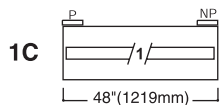
Angle in Deg	0-Deg cd/sm	45-Deg cd/sm	90-Deg cd/sm
45	5466	6917	9009
55	4136	6106	4559
65	3350	2944	2806
75	2883	2245	2209
85	1976	1984	1466

COMMON CIRCUIT CONFIGURATIONS FOR ONE LAMP WALL MOUNT FIXTURES

- 1C=Single circuit luminaire
- 1E=Single circuit luminaire with emergency circuit
- 1B=Single circuit luminaire with battery pack

- /1/ =Circuit 1
- /E/ =Emergency Circuit
- /B/ =Battery Circuit

- P =Power Mount
- NP =Non-Power Mount



STANDARD ROW CONFIGURATIONS

FIXTURE LENGTH	4'	8'	12'	16'	20'	24'	28'	32'	36'	40'	44'	48'	52'	56'	60'	64'	68'	72'	76'	80'	84'	88'	92'	96'	100'	104'	108'		
4'	1																												
8'		1		2	1		2	1		2	1		2	1		2	1		2	1		2	1		2	1		2	1
12'			1		1	2	1	2	3	2	3	4	3	4	5	4	5	6	5	6	7	6	7	8	7	8	9		