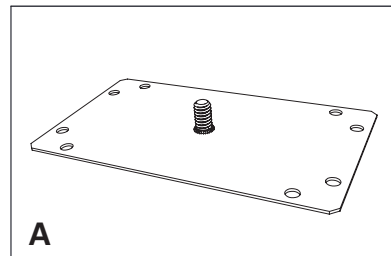


## Installation Instructions - Acoustic Baffle Suspended LED

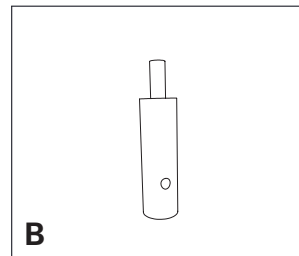
### 2 Inch Baffle

#### Recommended Equipment:

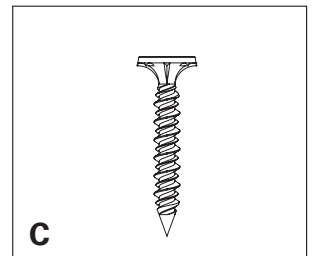
- Philips head screwdriver
- Gloves



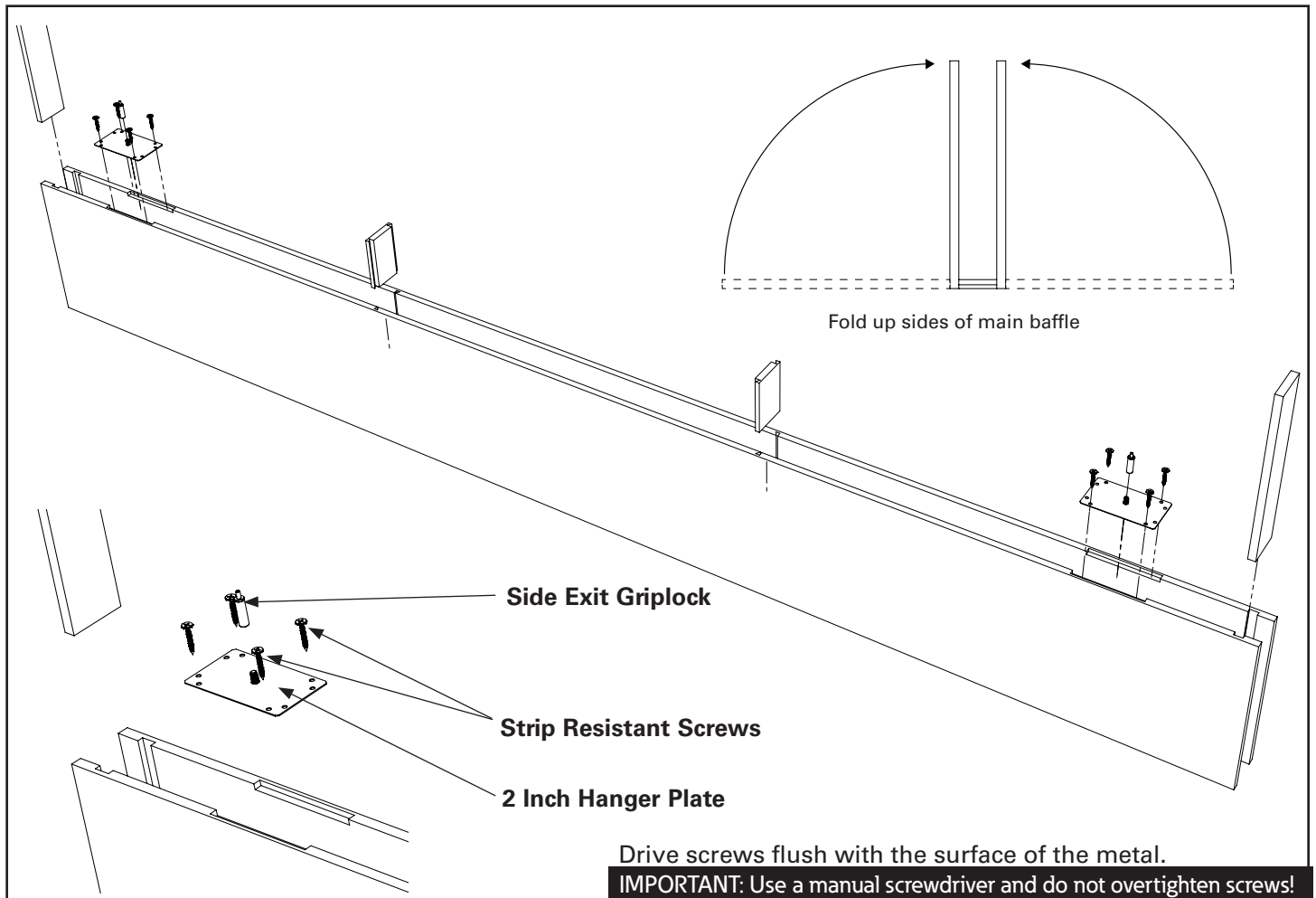
**A**  
2 and 4 Inch Hanger Plate



**B**  
Side Exit Griplock



**C**  
Strip Resistant Screw

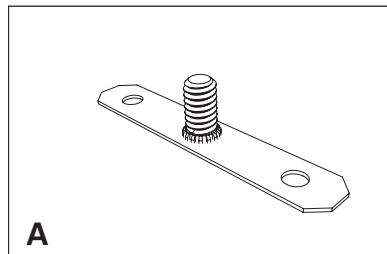


## Installation Instructions - Acoustic Baffle Suspended LED

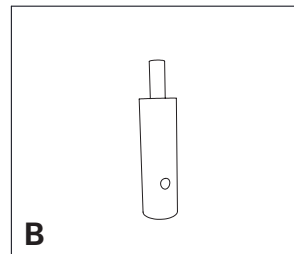
### Blade Baffle

#### Recommended Equipment:

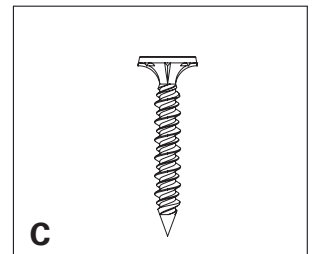
- Philips head screwdriver
- Gloves



**A**  
Blade Hanger Plate



**B**  
Side Exit Griplock



**C**  
Strip Resistant Screw

