

DESCRIPTION

The Fail-Safe FSR combines maximum security construction features with energy saving technology. This recessed luminaire utilizes a one-piece overlapping door frame, security lensing and tamper-resistant fasteners to maximize impact-resistance and prevent contraband concealment and unauthorized fixture penetration. UL/cUL listed for damp locations. The FSR is ideal for confinement/security applications. Suitable for use in inmate cells, psychiatric wards, secure corridors and general population areas.

| Catalog # | | Type |
|-------------|--|------|
| Project | | |
| Comments | | Date |
| Prepared by | | |

SPECIFICATION FEATURES

Fasteners

Stainless steel tamper-resistant T20 TORX® screws standard. Allen-head screws with center reject pin optional (SF3).

Housing

Die-formed CRS body with welded corners to form a one-piece housing which prevents contraband concealment and unauthorized fixture penetration.

Finish

High gloss, electrostatically applied, white powder coat finish, average minimum reflectance 92%.

Door

One-piece, CRS door frame (12, 14, 16, or 18 ga.) with die-formed edges and tightly closed corners increases rigidity. Aircraft cable secures door to housing.

Light Mask

Gasketing surrounds door frame and prevents light leaks.

Lens

Choice of prismatic acrylic, prismatic polycarbonate or prismatic tempered glass on fixture side, clear polycarbonate or clear tempered glass on environmental side.

Lamps

By others.

Lens Retention

Lens secured by thru-studs and vertically adjustable internal CRS hold-downs.

Ballast

Electronic Class P, CBM/ETL ballast.

Labels

UL/cUL listed for damp locations. Wet location under covered ceiling optional.



FSR24

2x2

2x4

T5

Biaxial

T8

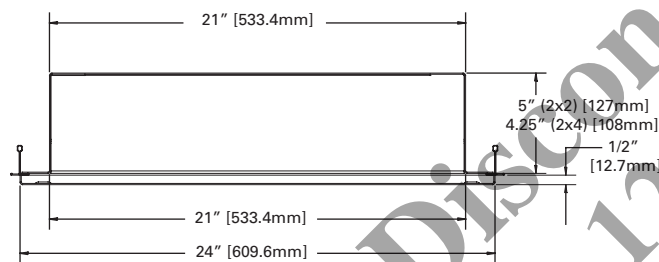
Fluorescent

Confinement/Correctional

RECESSED

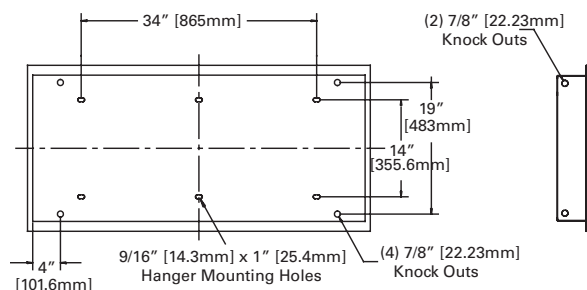
CROSS-SECTION DIMENSIONS

2x2 / 2x4

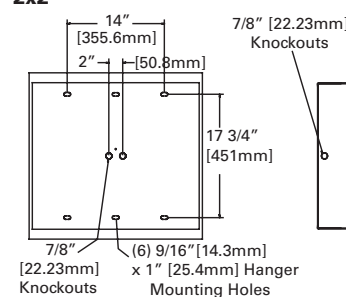


TYPICAL MOUNTING DETAIL

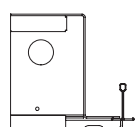
2x4



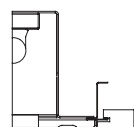
2x2



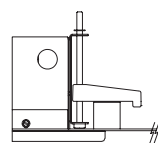
CEILING COMPATIBILITY



T-Grid (TG)



Concealed Z-Spine (CZ)



Security Ceiling (SC)

Electronic Ballast Data
Consult Cooper Lighting Solutions Representative

TORX® is a registered trademark of Camcar Division of Textron Inc.

ORDERING INFORMATION

SAMPLE NUMBER: FSR-TG-X24-232-UNV-80/86-EB81-GLR

| Product Family | Ceiling Type | Door | Fixture Width | Lamp Type | Voltage | Lens Type | Ballast | Options |
|---|--------------|------|---------------|--|---------|--|---------|---|
| FSR | | | 24 | | | / | | |
| FSR = Maximum Security Recessed Luminaire | | | | 2' Nom. Length | | Inner Layer ² (Optional) 90=0.005 UV Absorbing Overlay | | EL4 =EM Pack, T8, BX |
| TG =T-Grid ⁴ CZ =Concealed Z-Spline ⁴ SC =Security Ceiling ^{5, 6, 7, 8} | | | | T5 Fluorescent ³ 214=(2) 14W Lamps 224=(2) 24W Lamps 314=(3) 14W Lamps 324=(3) 24W Lamps 414=(4) 14W Lamps 424=(4) 24W Lamps 614=(6) 14W Lamps 624=(6) 24W Lamps | | 120=120V 277=277V UNV=120 -277V 347=347V | | EL5 =EM Pack, T5, T5HO ⁹ EL14 =EM Pack, T8,T5, T5HO ⁹ FNL =Fluorescent Night Light, ⁹ 5, 7, 9 Watt |
| | | | | 4' Nom. Length | | Fixture Side 80 = 0.125 Prismatic Acrylic 81=0.156 Prismatic Polycarbonate 82=0.187 Prismatic Polycarbonate 93=0.156 Prismatic Tempered Glass Environmental Side ² 84 =0.125 Clear Polycarbonate 85=0.187 Clear Polycarbonate 86 =0.250 Clear Polycarbonate 87 = 0.375 Clear Polycarbonate 88=0.500 Clear Polycarbonate 94=0.187 Clear Tempered Glass 96=0.250 Clear Tempered Glass 97=0.375 Clear Tempered Glass 98=0.500 Clear Tempered Glass | | FNL13 =Fluorescent Night Light, ⁹ 13 Watt LNL =LED Night Light ⁹ GLR =Fuse and Holder CPHF =Concealed piano hinge, full length |
| S =12 ga. (Ultimax) X =14 ga.(Maximum) D =16 ga. (Medium) N =18 ga. (Minimum) | | | | T8 Fluorescent 217=(2) 17W Lamps 317=(3) 17W Lamps 417=(4) 17W Lamps 617=(6) 17W Lamps | | | | 14G =14-Gauge Housing RGT =Removable Gear Tray WL = Wet Location |
| 24 =24" Wide | | | | Biaxial Fluorescent 240BX=(2) 40W Lamps 340BX=(3) 40W Lamps 440BX =(4) 40W Lamps | | | | Stainless Steel Door SSN =Natural Brushed Finish SSP =Polyester Powder Coat Finish |
| | | | | T8 U-Lamp 2U1 5/8=(2) 31W Lamps 3U1 5/8=(3) 31W Lamps 2U6T8=(2) 32W Lamps | | | | Fasteners SF3 =Allen-Head (center pin reject) |
| | | | | T8 Fluorescent 232=(2) 32W Lamps 332=(3) 32W Lamps 432=(4) 32W Lamps 632=(6) 32W Lamps | | | | Mounting Options SWBR =Swing-out Brackets (4) ⁴ YMF =Yoke Mounting Frame (2) ^{4, 5} |

Notes:

- ¹ For specific electronic ballast, specify brand and catalog number.
² See Lens Ordering Guide for other available lens choices.
³ (2) T5 ballasts or (1) T5 ballast and (1) Emergency maximum. Additional electrical components will require back-box which will increase fixture height and may cause extended delivery lead-time. Consult factory for exact dimensions.
⁴ TG and CZ ship without swing-out brackets or yoke mounting frame. Please specify SWBR or YMF if required.
⁵ SC ships with swing-out brackets standard. For yoke mounting frames, specify YMF.
⁶ SC designed for security ceilings that consist of metal "panels", either solid or perforated. A hole is cut in the "panel" and the fixture is placed below the cut-out, and pulled towards the ceiling by the SWBRs. Door frame protrudes below ceiling line, and fully conceals fixture/housing.
⁷ Ceiling cut-out dimensions; 2' x 2': 23-1/4" x 24-1/4", 2' x 4': 23-1/4" x 48-1/4"
⁸ Fixture ships with (4) swing-out brackets standard.
⁹ Specify voltage.

Accessories
(Order separately)

9306 =Allen-Head Wrench
 VRSD=T20 Center Pin Tamperproof,
 TORX ® - head screwdriver