

DESCRIPTION

Corelite's Class A D/I suspended direct-indirect fluorescent luminaire features a classic design and increased downlight via two open side apertures with perforated baffle blades. Optional Eclipse Louver features white perforated baffle blades with ribbed diffuse anodized aluminum runners, which reduces visual brightness from normal viewing angles. The Class A D/I may be mounted individually or continuously with 4', 8' and 12' modular sections. Luminaires align with T-Grid and interface with all ceiling types. Class A D/I is suited for open offices, private offices, conference rooms, corridors, schools, libraries, labs and public spaces.

Catalog #		Type
Project		
Comments		Date
Prepared by		

SPECIFICATION FEATURES

A ... Construction

Housing is one piece die-formed cold rolled steel, forming a 9" x 2-7/8" architectural profile. Standard 4'-0", 8'-0", and 12'-0" fixture lengths combine for continuous runs.

B ... End Plates

Standard laser cut 14-gauge cold rolled steel, mechanically attached with no exposed fasteners. Optional die cast aluminum end caps also available.

C ... Louver

Standard white aluminum perforated blades. Optional Eclipse Louver with white perforated blades and ribbed diffuse anodized aluminum runners. Eclipse Louver not available for Quick Ship.

D ... Reflectors

Reflector pan is painted with a high reflectance white powder coat finish.

E ... Electrical

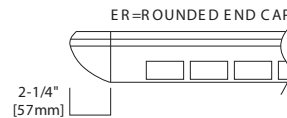
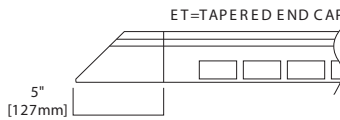
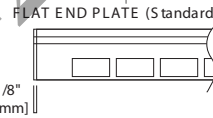
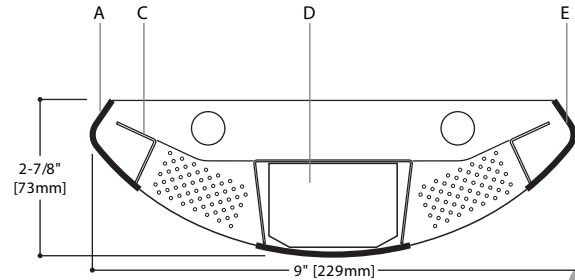
T5/T5HO fixtures are pre-wired with quick wire connectors and use UL listed Class P, T5/T5HO program rapid start universal voltage electronic ballasts, power factor of 97% with less than 10% THD. Fixtures and electrical components certified to UL and CUL standards.

F ... Finish

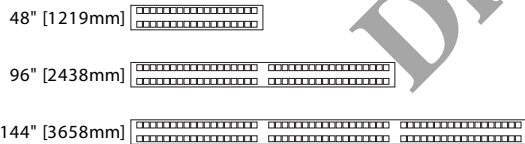
Fixture housings are standard white using electrostatically applied polyester powder coat paint.

Mounting

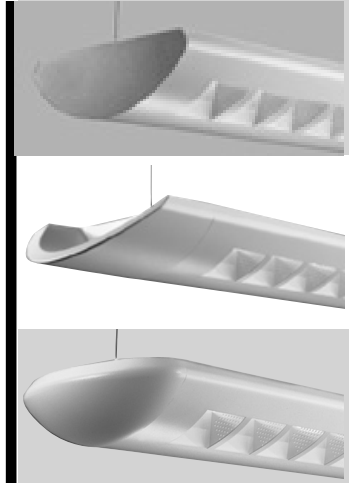
Standard aircraft cable mounts on 4'-0", 8'-0" and 12'-0" centers. Refer to installation section for various ceiling interface details and rigid pendant mounting details..



MODULES AND DIMENSIONS*



*Dimensions do not include end plates.



**Class A D/I
Open Baffle**

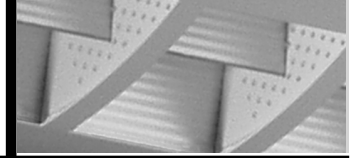
2T5/2T5HO

**Suspended
Direct/Indirect**

Light Distribution

**Indirect - 73.2%
Direct - 26.8%**

fifthlight technology ECLIPSE LOUVER



ORDERING INFORMATION

Sample Number: AB-WB-2T5-1C-UNV-AC48-T1-12-ET

AB	WB	2T5	1C	UNV	AC48	T1	12	ET
----	----	-----	----	-----	------	----	----	----

Series
AB: Class A D/I Open Baffle Suspended

Number of Lamps
2: 2 Lamps

Lamp Type
N5: T5 Normal Output
T5: T5 High Output

Number of Circuits
1: 1 Circuit
2: 2 Circuits

Wiring
B: Battery Pack
C: Standard Circuit
D: Dimming
E: Emergency
T: Nightlight
Y: Daylight

Voltage
120: 120V
277: 277V
347: 347V
UNV: Universal (120V-277V)

Suspension
A: Aircraft Cable
P: Rigid Pendant

Power Feed
C: Straight Cord
K: Curly Cord
P: Rigid Pendant

Suspension Length
Fixed Cable
12", 15", 18", 21", 24", or 27" (+/- 1/2" adjustment)
Adjustable Cable
48", 120", 240", 300", or 360" (infinite adjustment along entire length of cable)

Rigid Pendant
12", 15", 18", 21", 24", or 27"

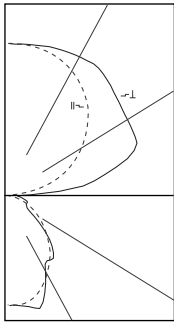
Ceiling Type
T1: 1" T-Bar
T9: 9/16" T-Bar
TS: Slotted T-Bar
ST: Structure
JB: 4" Octagonal J-Box

Run Length
Individually Mounted
Luminaires may be 4', 8', or 12' in length
Continuously Mounted
Standard row configurations over 12' consist of 8' and 12' sections

Options
ER: Rounded End Cap
ET: Tapered End Cap

- Notes: 1 Not available for Quick Ship.
2 Not all options available. Please consult your Cooper Lighting Solutions Representative for availability.
3 Consult adder section of the price guide for additional standard lengths.

Specifications and Dimensions subject to change without notice.
Consult your representative for additional options and finishes.



AB-WB-2T5
(2) FP54/841/HO
4500 Lumens

Efficiency 93.6 %

Test Report
#LS116863

Coefficients of Utilization

rc	Effective floor cavity reflectance																		
	80%				70%				20%										
rw	70	50	30	10	70	50	30	10	50	30	10	50	30	10	50	30	10	0	
RCR	0	95	95	95	85	85	85	85	66	66	66	49	49	49	33	33	33	25	
	1	87	83	80	77	78	74	71	68	58	56	54	43	42	41	29	28	28	22
	2	79	73	67	63	71	65	61	57	51	48	45	38	36	34	26	25	24	19
	3	73	64	58	53	66	58	53	48	46	42	39	34	32	30	24	22	21	16
	4	67	57	50	45	59	51	46	41	41	36	33	31	28	26	21	20	18	14
	5	61	50	44	38	54	46	40	35	36	32	29	27	24	22	19	17	16	13
	6	56	46	38	33	50	41	35	31	33	28	25	25	22	20	17	16	14	11
	7	52	41	34	29	46	37	31	27	29	25	22	22	16	14	16	14	13	10
	8	48	37	30	25	43	33	27	23	27	22	19	20	17	15	14	13	11	09
	9	44	33	27	22	39	30	24	20	24	20	17	18	15	13	13	11	10	08
	10	41	30	24	20	37	27	22	18	22	18	15	17	14	12	12	10	09	07

Candela

Angle	Along II	45°	Across ⊥
0	1034	1034	1034
5	1040	1040	1038
15	966	1037	1099
25	834	922	802
35	675	648	720
45	501	550	471
55	320	325	202
65	188	158	175
75	96	119	156
85	25	71	91
90	0	58	74
95	78	438	468
105	334	907	1038
115	605	1005	1304
125	859	1130	1326
135	1055	1286	1383
145	1214	1362	1464
155	1330	1408	1462
165	1399	1429	1451
175	1428	1437	1432
180	1430	1430	1430

Zonal Lumen Summary

Zone	Lumens	%Lamp	%Fixture
0-30	784	8.72	9.32
0-40	1215	13.50	14.43
0-60	1873	20.81	22.24
0-90	2256	25.08	26.79
40-90	1041	11.57	12.37
60-90	383	4.26	4.56
90-180	6166	68.51	73.21
0-180	8422	93.59	100.00

Luminance Data

Angle in Deg	0-Deg cd/sm	45-Deg cd/sm	90-Deg cd/sm
45	6783	7374	6462
55	5338	5476	3386
65	4258	3565	3540
75	3535	3548	3827
85	2721	2947	2863

COMMON CIRCUIT CONFIGURATIONS FOR TWO LAMP SUSPENDED FIXTURE

2C=Two circuit luminaire

2E=Two circuit luminaire with emergency circuit

1B=Single circuit luminaire with battery pack

/1/=Circuit 1

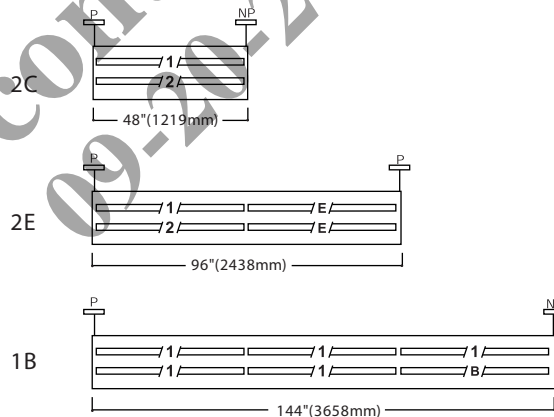
/2/=Circuit 2

/E/=Emergency Circuit

/B/=Battery Circuit

=Power Mount

=Non-Power Mount



STANDARD ROW CONFIGURATIONS

FIXTURE LENGTH	4'	8'	12'	16'	20'	24'	28'	32'	36'	40'	44'	48'	52'	56'	60'	64'	68'	72'	76'	80'	84'	88'	92'	96'	100'	104'	108'	
4'	1																											
8'		1		2	1		2	1		2	1		2	1		2	1		2	1		2	1		2	1		
12'			1		1	2	1	2	3	2	3	4	3	4	5	4	5	6	5	6	7	6	7	8	7	8	9	