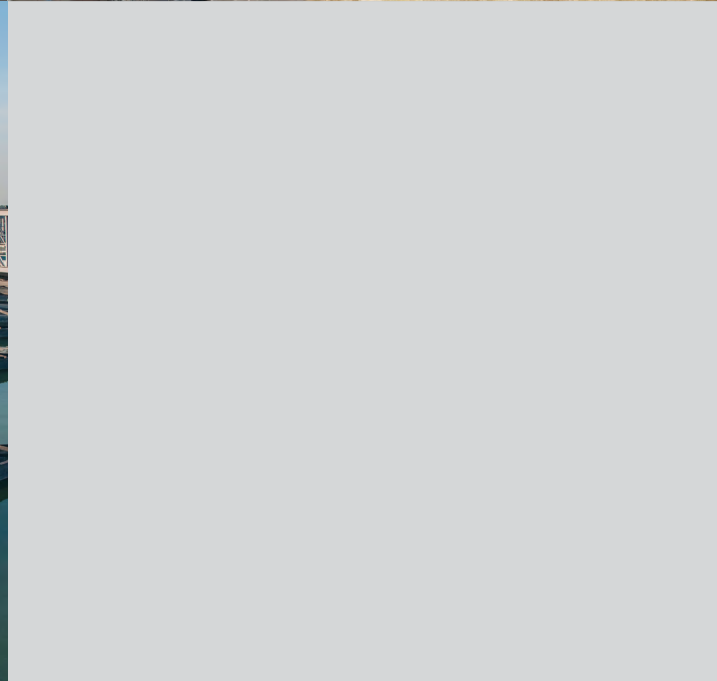


CORRECTIONAL FACILITIES
WASTE WATER TREATMENT
PORTS & RAIL
Infrastructure Lighting
& Controls Solutions



Delivering unparalleled performance

No matter the complexity of your project, Cooper Lighting Solutions offers a wide range of LED solutions that lower operating costs, reduce energy consumption, and improve security of outdoor and indoor spaces. The cutting-edge functionality of our products provide unmatched quality and attention to detail.

- 6 Correctional Facilities
- 14 Ports and Rail
- 20 Waste Water Treatment



Cooper Lighting Solutions has everything you need to keep your facility safe and secure for years to come.

Cooper Lighting Solutions – Your trusted partner in complete lighting solutions.

Achieve immediate payback by upgrading to our LED products.

Cooper Lighting Solutions offers the infrastructure industry the most competitive, compliant product and service portfolio as a one-stop shot for end to end lighting and control solutions.

The lifetime of the LED luminaires is unmatched versus its HID counterparts with no lamp maintenance and allow for large ranges in voltage drops without losing light. We combine reliability and expertise into every product, providing you with labor and maintenance savings, simplified installation, and improved productivity. Whether you're looking for general lighting or cutting-edge functionality, you'll find unmatched quality and attention to detail.

At Cooper we believe credibility is key. We are committed to providing LED solution that meet the highest standards of reliability and performance. Cooper's deep rooted understanding of outdoor product markets and application needs has been amassed through decades of supplying quality products, service and support.



Building a smarter, safer, and brighter world.

BEFORE
400W Pulse Start Metal Halide
14 Fixtures = 6,370 Total Watts



AFTER
LED
14 Fixtures = 2,002 Total Watts



Correctional Facilities

Offering comprehensive solutions to meet all of your application needs



Wall-Mounted

In our outdoor wall mount portfolio, you'll find options for every job - from functional and cost-effective to more performative options.



High Mast

The high mast luminaire is a high performance and affordable solution for facilities in need of high lumen packages with accurate optical control.



Flood

Effectively illuminating large areas is a big task, requiring you to balance security needs with local codes while controlling costs. With the right floodlighting solutions, you can rise to the challenge every time.

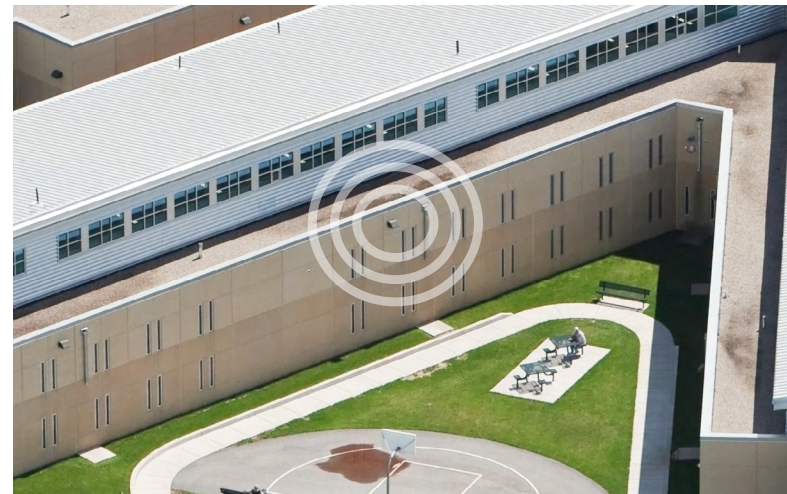
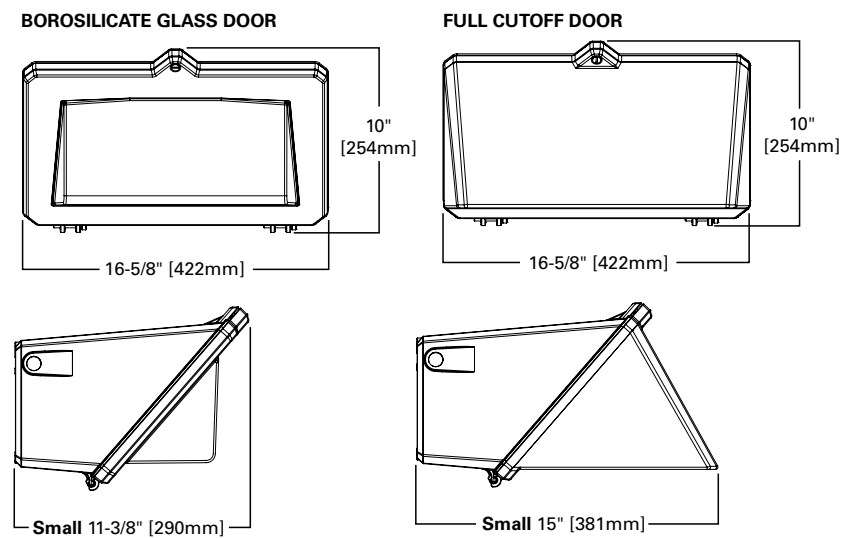


Area / Site

With our suite of expertly - designed lighting products, we've combined the optical performance and efficiency you need with features that make the installation process painless.

Maximum performance and minimum maintenance.

The Wal-Pak Series of wall luminaires provides traditional architectural style with high performance energy efficient illumination. Rugged die-cast aluminum construction, stainless steel hardware along with a sealed and gasketed optical compartment make the WalPak virtually impenetrable to contaminants. IP66 Rated. UL and cUL wet location listed. The Wal-Pak wall luminaire is ideal for pathway illumination, building entrances, vehicle ramps, schools, tunnels, stairways and loading docks.



High output and efficiency. Easy install and affordability.

The Celesteon LED high mast luminaire combines high output and efficiency with easy install and affordability. Designed for new and retrofit high-lumen applications, the Celesteon LED high mast is ideal for highways, interchanges, ports, rail yards, container yards, parking lots, correctional facilities, security lighting, treatment plants and other facilities in need of high lumen packages with accurate optical control.



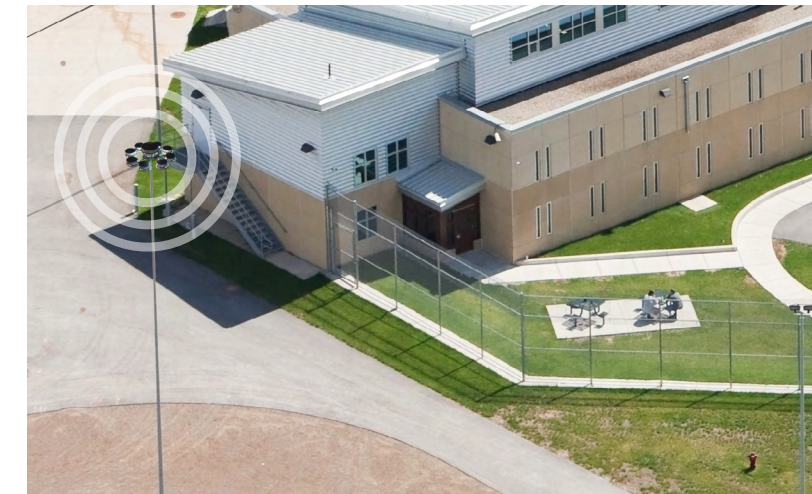
DURAQ HIGH PERFORMANCE DRIVER

- Does not contribute to EMI noise
- Long operating life (> 20 years)
- High reliability
- Robust and scalable system (from 100W -100kW)
- Lower DC ripple
- Reduced SKUs with multiple voltage configurations using winding taps
- No power interruptions or LED flicker

vs.

SWITCHING DRIVER

- Generates EMI, requires EMI filter
- Short operating life (5-10 years with additional cost)
- Limited reliability, susceptible to surges and power transients
- Limited to UNV input range. 347-480V requires additional SKUs
- May shut-down and restart if input voltage and temperature change



Low profile. High performance.



The USSL Discrete area and site luminaire combines optical uniformity, energy efficiency and long-term reliability in an advanced, patent pending modern design. Now utilizing a direct-mounted discrete light engine, the USSL Discrete luminaire delivers unparalleled uniformity and improved visual comfort. A versatile quick mount standard arm facilitates ease of installation for both retrofit and new installations. The USSL Discrete fixture replaces 150-1,000W metal halide fixtures in general area lighting applications such as parking lots, walkways, roadways and building areas.

DESIGN FEATURES



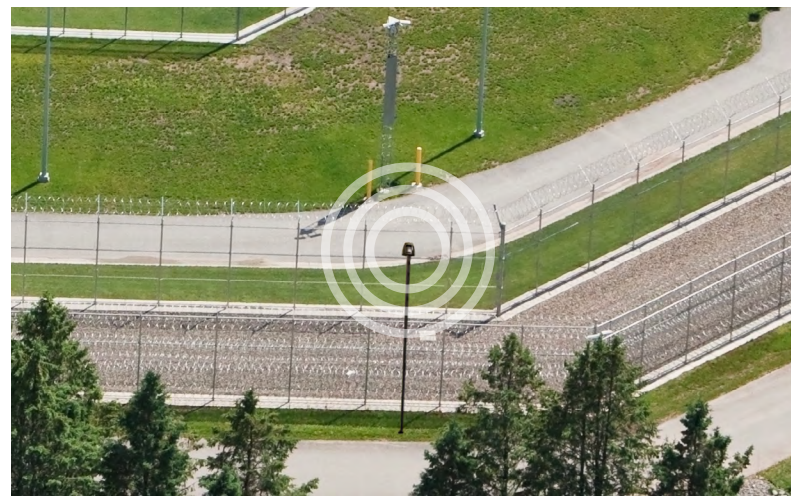
Versatile mount arm
Mounts to multiple drilling patterns 1-1/2" to 4-7/8"



Versatile mount arm
Simple knock-out allows for mount to square or round poles



Discrete LED Optics
Maximize area coverage with superior uniformity and visual comfort.



Designed for reliability and value.



The Night Falcon high wattage LED floodlight combines high-efficiency, precision engineered optics and energy efficiency in a cost-effective solution. Incorporating an innovative thermal management design into the fixture, that maximizes heat dissipation, results in longer fixture and LED life. The Night Falcon high wattage LED floodlight is the ideal floodlight for applications including parking lots, construction and storage sites, rail yards, light industrial locations, marinas and service areas.

HIGH EFFICIENCY OPTICS

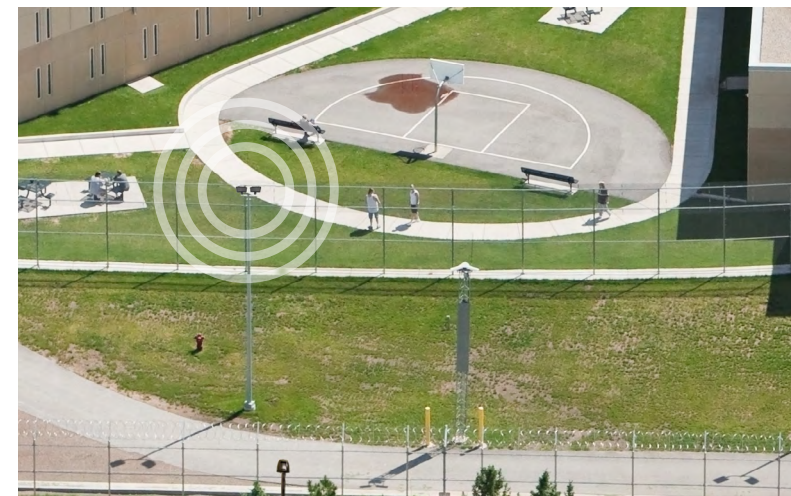
Maximum fixture spacing is achieved with the precisely designed NEMA 6H x 6V wide and 3H x 3V spot distribution.

BUILT TO LAST

The rugged, die-cast housing is IP66 and 3G vibration rated for exceptional durability and long term reliability.

MOUNT. AIM. DONE.

The fixture weighs only 48 pounds, which simplifies installation. Select from several versatile mounting configurations including an integral slipfitter or a galvanized steel trunnion mount.



Fail-Safe

Fail-Safe

Unsupervised Areas

Cells



Showers



Work Spaces



- Inmates regularly present in these areas for long periods of time
- Guards only pass by periodically; not continuously present
- Fixtures typically mounted at lower heights and easy to reach
- Lens and metal thicknesses are thick to withstand regular, extended periods of potential high abuse

Supervised Areas

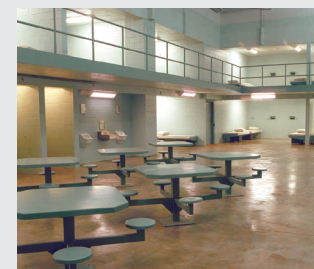
Cells



Showers



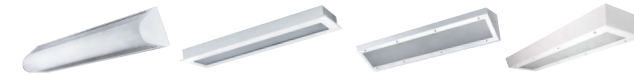
Work Spaces



- Inmates regularly present in these areas for long periods of time
- Guards only pass by periodically; not continuously present
- Fixtures typically mounted at lower heights and easy to reach
- Lens and metal thicknesses are thick to withstand regular, extended periods of potential high abuse

Unsupervised Areas

Click on products to learn more



	FMB	FMR	FCC	FUSL
Applicability	Cells	★★★	★★★	★★★
	Showers		★★★	★★
	Work Spaces	★★	★★★	★★
Features	Mounting	Wall	Recessed	Corner
	Size	2', 4'	1x1, 1x2, 1x4, 2x2, 2x4	2', 4'
	Max Lumens*	5,264 / 5,264	9,960	7,178
	Wet Location	N/A	Optional	Optional
	Max Metal Ga. / Thickness	12 ga / 0.109"	12 ga / 0.109"	12 ga / 0.109"
	Max Total Lens Thickness	.750"	.875"	.875"

Notes: 1. ★★★ = high applicability, ★★ = medium applicability, ★ = low applicability, blank = non-applicable
 *Max Lumens with 0.250" Polycarbonate Lens
 **Nominal Lens Thickness

Supervised Areas

Click on products to learn more



	FCT	FMS	TR15
Applicability	Hallways	★★★	★★
	Cafeterias	★★	★★
	Visiting Spaces	★★★	★★★
Features	Mounting	Surface	Surface
	Size	2', 4'	1x1, 1x2, 1x4, 2x2, 2x4
	Max Lumens*	16,700	15,300
	Wet Location	N/A	Optional
	Max Metal Ga. / Thickness	12 ga / 0.109"	12 ga / 0.109"
	Max Total Lens Thickness	.500"	.860"

Notes: 1. ★★★ = high applicability, ★★ = medium applicability, ★ = low applicability, blank = non-applicable

Ports & Rail

High quality precise lighting to maximize safety, security, and productivity



High Mast

Designed for new and retrofit high-lumen applications, the Celesteon is perfect for ports, rail yards, container yards where high lumen packages and accurate optical control is paramount.



Flood

Cooper Lighting's flood luminaires light the way to sustainable and economic solutions. Built with the installer in mind our floodlights deliver simplicity and versatility.



Cobrahead

Our area/site and roadway luminaires are designed for easy install, superior performance, and long term energy and maintenance savings.



Designed for reliability and value.

Cooper Lighting's UFLD family of LED Floodlights are designed to meet your most challenging specifications while keeping your project budget intact. With outputs from 2,600 to 52,000 lumens, you can choose the fixture to meet your exact lighting requirements, and three housing sizes scaled to the lumen packages ensure you never buy more fixture than you need.



High optical performance and customer focused features.



The Archeon Large LED roadway luminaire delivers all the optical performance benefits from the advanced LED technology in a modern, yet familiar cobrahead design. The patented, high-efficiency AccuLED Optics™ system provides uniform and energy conscious illumination and our customer-focused features include single latch tool-less entry for easy installation and maintenance, and industry-leading surge protection and control options.



ROADWAY LIGHTING, WE'VE GOT YOU COVERED

The Archeon family is available in 4 sizes to satisfy specific application needs, while offering a cohesive look when desired.

PRECISELY DESIGNED OPTICS

A choice of 6 high efficiency AccuLED Optics, available in Type II, III, IV wide and V square wide, are precisely designed to shape the distribution, maximizing efficiency and application spacing.

ALL-IN-ONE LIGHTING AND SURVEILLANCE

Lighting is everywhere. Why shouldn't it do more? Outdoor lighting provides the perfect platform for safer, more connected communities. Now, besides just keeping key areas well-lit, lighting can help you keep an eye on things.



High performance and precise optics.

The Celesteon LED high mast luminaire combines high output and efficiency with easy install and affordability. Designed for new and retrofit high-lumen applications, the Celesteon LED high mast is ideal for highways, interchanges, ports, rail yards, container yards, parking lots, correctional facilities, security lighting, treatment plants and other facilities in need of high lumen packages with accurate optical control.



AVAILABLE COLLATERAL

Power Ahead
DuraQ pilot program

Reliable. Robust. Proven.

Celesteon ReadyQ Area & Site Decorative
COMING SOON COMING SOON COMING SOON

DuraQ pilot program

- Select a DuraQ driver enabled LED fixture
- Enter a DuraQ pilot order with promo code provided
- Install and experience the benefits of DuraQ

COOPER Lighting Solutions DURAQ

DuraQ
Celesteon Product Update - October 2020

Reliable. Robust. Proven.

The DuraQ high performance line is the best of its kind in the lighting industry. Proven to exceed design life expectations, DuraQ LED luminaires are built to last. DuraQ is the only luminaire line to offer a 10-year warranty. Try to find anything out there that can match DuraQ's performance.

FEATURES

- A complete luminaire that requires the necessary voltage input for and heat rejection
- Traditional rated to 100,000 hours (actual life expectancy is 150,000 hours)
- 100,000 hours (actual life expectancy is 150,000 hours)
- 100,000 hours (actual life expectancy is 150,000 hours)
- 100,000 hours (actual life expectancy is 150,000 hours)
- 100,000 hours (actual life expectancy is 150,000 hours)

BENEFITS

- Superior optical design and light conditions, extending drive and vehicle component life
- Superior maintenance and warranty costs due to longer life and additional energy protection
- Superior performance and reliability
- Ideal for use in "dry power" areas and with non-linear loads
- Superior performance and reliability
- Superior performance and reliability

CERTIFICATIONS

UL LISTED DLC ETL IESNA

FERRITORRESONANT DRIVER

- Superior performance and reliability
- Superior performance and reliability
- Superior performance and reliability

SWITCHING DRIVER

- Superior performance and reliability
- Superior performance and reliability
- Superior performance and reliability

COOPER Lighting Solutions



Waste Water Treatment

Delivering unparalleled performance and reliability with minimum maintenance

Area / Site

Designed to enhance security and aesthetics while meeting even the most demanding trespass specifications, these solutions feature zero uplight and tightly controlled backlight. Precision optics mean there's no project or zone that's too complex.



Wall-Mounted

Effective wall-mounted lighting helps guide people to their destinations and boosts safety. Cooper Lighting Solution's wall-mounted lighting offers advanced features like AccuLED Optics, IP66 vibration ratings, and programmable settings.



High Mast

The high mast luminaire is a high performance and affordable solution for facilities in need of high lumen packages with accurate optical control.



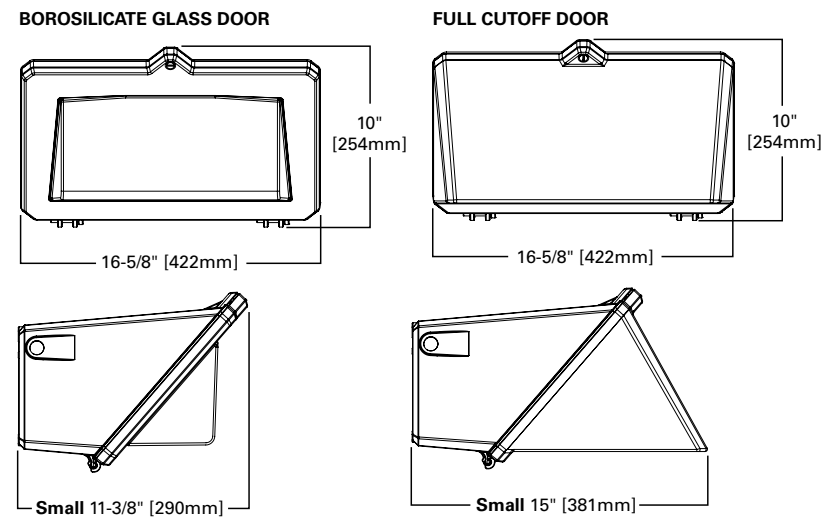
Flood

With a range of optical distributions, lumen packages and controls compatibility, Cooper Lighting Solutions is your source for efficient, reliable general purpose LED utility and flood lighting. In addition, our products are compatible with existing mountings and refractors to minimize up-front expense, giving you better ROI.



Durable and efficient with minimum maintenance.

The WKP Wal-Pak Full Cutoff provides a durable and efficient exterior light source for any application requiring maximum performance and minimum maintenance. The rugged, die-cast aluminum housing, stainless steel hardware and gasket sealed optics compartment combine to make the Wal-Pak virtually impenetrable to contaminants.

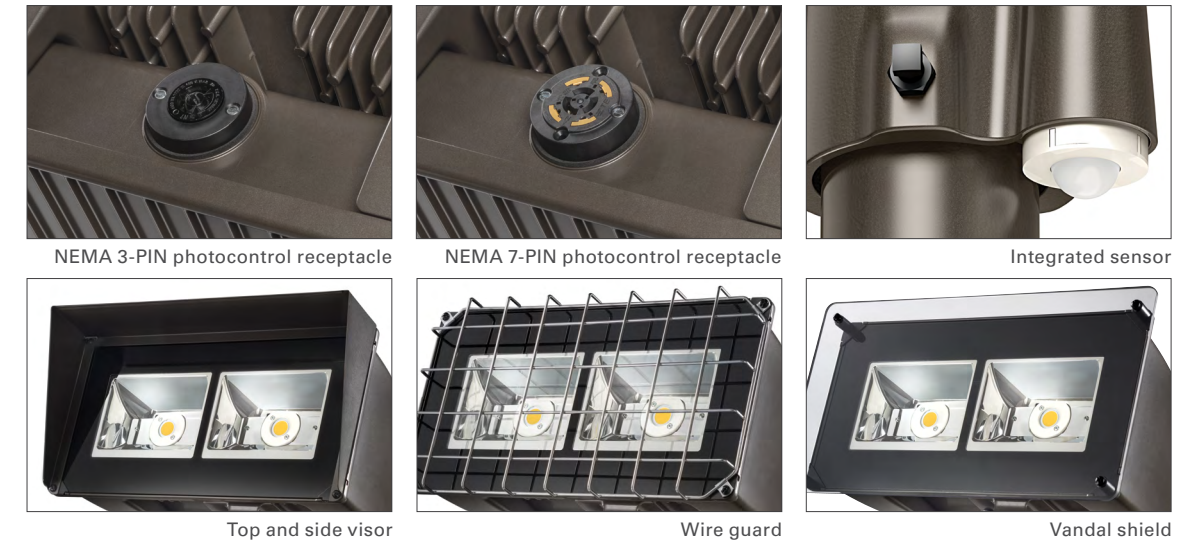


Designed for reliability and value.

The UFLD LED floodlight luminaire combines high-efficiency optics, superior thermal management and energy efficiency in a cost-effective solution. The compact, robust design incorporates a separate driver compartment for maximum heat dissipation to insure longevity of both the fixture and the optics. The UFLD luminaire uses precision engineered optics delivering superior uniformity and excellent illumination to the targeted application. The UFLD luminaire is UL/cUL listed for wet locations and is IP66 rated.



OPTIONS AND ACCESSORIES



Engineered for Performance and Reliability.



High output and efficiency. Easy install and affordability.



With industry-leading, patented optics in a scalable package, the Verdeon LED area, site and roadway luminaire delivers state-of-the-art optical control, low maintenance costs and rugged construction in a modern style. The Verdeon luminaire provides warm, white light with superior color rendering and uniform illumination to the targeted surface while providing greater than 67 percent in energy and maintenance savings over traditional HID solutions. Whether the application is a roadway or industrial/municipal parking lot, the Verdeon luminaire is the choice for superior energy efficiency with unbeatable economics.

OPTIONAL FEATURES



Surge Protection
UL 1449 Listed 10kV/10kA surge protection against common (line-to-ground) and differential (line-to-line) mode surge.



7-PIN NEMA Twistlock Photocontrol Receptacle
ANSI C136.41 compliant. Enables wireless dimming when used with compatible photocontrol. 3-PIN NEMA Twistlock Photocontrol also available.



Celesteon LED high mast luminaire combines high output and efficiency with easy installation and affordability. Designed for new and retrofit high-lumen applications, the Celesteon LED high mast luminaire is a high performance and affordable solution for highways, interchanges, ports, rail yards, container yards, parking lots, correctional facilities, security lighting, treatment plants and other facilities in need of high lumen packages with accurate optical control.

DESIGN FEATURES



High efficiency LEDs



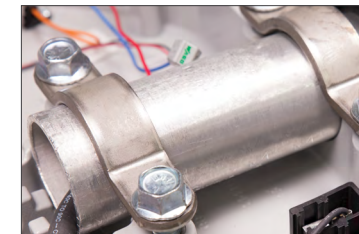
Surge protection



Terminal block



3 or 7-PIN NEMA receptacle



4-bolt mounting





Area / Site Lighting



USSL



NVN Navion



USSL-XL



CRTK2 Caretaker



USSL Discrete



Vision Site



USSL-XL Discrete



RDG Ridgeview



GAN Galleon



TMU Talon



GAP Galleon Pedestrian

Floodlighting



UFLD-S



UFLD



UFLD-L



GAN Galleon Flood

Roadway Lighting



ARCH-N Archeon Nano



ARCH-S Archeon Small



ARCH-M Archeon Medium



ARCH-M Archeon Medium



VERD Verdeon



VERD-M Verdeon



XNV



XNV2



NVN Navion



CRTK2 Caretaker



CST Celesteon

Wall Mount Lighting



GAW Galleon Wall



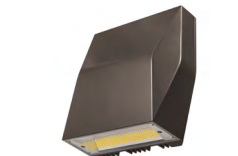
WKP Wal-Pak Glass



WKP Wal-Pak Glass



Axcent Small



Axcent Large





PRODUCT	Application	Roadway										
	Series	ARCH-N	ARCH-S	ARCH	ARCH-L	VERD	VERD-M	XNV	XNV2	NVN	CRTK2	CST
PERFORMANCE / CERTIFICATIONS	LED Type	Discrete	Discrete	Discrete	Discrete	COB	COB	Discrete	Discrete	Discrete	COB	COB
	Wattage Range (W)	10 - 60	21 - 96	38 - 161	93 - 279	VERD: 24 - 120 VERD G: 103 - 155	152 - 247	34 - 66	66 - 128	1.2A: 67 - 382 1A: 59 - 333 800mA: 44 - 249 600mA: 34 - 193	UNV: 20 - 70 DALI: 23 - 75	234 - 760
	Lumens (lm)	2,045 - 7,824	2,500 - 13,000	5,800 - 23,000	14,000 - 37,000	VERD: 2,670 - 15,700 VERD G: 12,000 - 20,300	19,380 - 30,000	4,182 - 8,396	8,338 - 16,740	1.2A: 7,035 - 50,006 1A: 6,412 - 45,584 800mA: 5,181 - 36,830 600mA: 4,225 - 30,035	UNV: 2,700 - 9,740 DALI: 3,110 - 10,130	30,000 - 103,000
	LPW	Up to 164	Up to 173	Up to 175	Up to 178	Up to 141	Up to 125	Up to 148	Up to 152	Up to 157	Up to 155	Up to 167
	Optical Distribution	T2R, T2U, T3, T4W, 5WQ	T2R, T3, T4W, 5WQ, T2U	T2R, T3, T4W, 5WQ, T2U	T2R, T3, T4W, 5WQ, T2U	T1, T2, T3, T4, T5	T2, T3, T4, T5	T2R, T3R, T4FT, T4W, SL2, SL3, SL4, 5NQ, 5MQ, 5WQ	T2R, T3R, T4FT, T4W, SL2, SL3, SL4, 5NQ, 5MQ, 5WQ	T2, T2R, T3, T3R, T4FT, T4W, SL2, SL3, SL4, 5NQ, 5MQ, 5WQ, SLL/SLR, RW, AFL	T2, T2-U0, T3, T3-U0, T5R, T5R-U0, T5R-SR	T1, T2, T3, T4, T5, T5N, T5R
	L70 (hours)	>800,000 @40C	>800,000 @40C	>800,000 @40C	>800,000 @40C	242,000 @ 50C	259,00 @ 40C	>851,000 @ 50C	>851,000 @ 50C	>851,000 @ 50C	306,000 @ 40°C	242,000 @ 40°C
	Dimming	✓	✓	✓	✓	✓	Optional	✓	✓	✓	✓	✓
INTEGRATED CONTROLS	Photocontrol	✓	✓	✓	✓	✓	✓	✓	✓	✓	✓	✓
	Occupancy	✓	✓	✓	✓	✓	✓	✓	✓	✓	✓	--
	Wavelinx	✓	✓	✓	✓	--	--	--	--	--	--	--
CONNECTED	Enlighted	--	--	✓	✓	✓	✓	✓	✓	✓	--	--
	Lumensafe	--	--	--	✓	--	--	--	✓	--	--	

PRODUCT	Application	Floodlighting			Area / Site Lighting				Wall Mount Lighting					
	Series	UFLD-S	UFLD	UFLD-L	Galleon Flood	USSL / USSL-XL	USSL / USSL-XL	GAP	GAN	Galleon Wall	Wal-Pak Glass	Wal-Pak Full Cut-Off	Axcent Small	Axcent Large
PERFORMANCE / CERTIFICATIONS	LED Type	COB	COB	COB	Discrete	COB	Discrete	Discrete	Discrete	Discrete	COB	COB	Discrete	Discrete
	Wattage Range (W)	20 - 50	85 - 184	179 - 371	34 - 640	50 - 350	50 - 300	34 - 129	34 - 640	34 - 129	27 - 46	27 - 46	14 - 52	56 - 123
	Lumens (lm)	2,700 - 5,800	10,500 - 23,800	25,900 - 48,000	4,200 - 80,800	7,100 - 48,600	7,500 - 41,000	3,700 - 14,400	4,200 - 80,800	3,200 - 17,000	3,300 - 5,900	1,884 - 3,192	1,526 - 5,661	6,619 - 17,346
	LPW	134	138	145	156	Up to 148	Up to 148	Up to 155	Up to 156	154	131	71	144	144
	Optical Distribution	6 x 6 Wide 3 x 3 Spot	6 x 6 Wide 3 x 3 Spot	6 x 6 Wide 3 x 3 Spot	T2,T2R,T3,T3R,T-4FT,T4W,SL2,SL3,SL4,5Q,5MQ,5WQ,SLL/SLR,RW,AFL	T2, T3, T4, T5	T2R, T2U, T3, T4W, 5WQ	T2, T2R, T3, T3R, T4FT, T4W, SL2, SL3, SL4, 5NQ, 5MQ, 5WQ, SLL/SLR, RW, AFL	T2,T2R,T3,T3R,T-4FT,T4W,SL2,SL3,SL4,5Q,5MQ,5WQ,SLL/SLR,RW,AFL	13	Glass	Full Cutoff	Type IV	Type IV
	L70 (hours)	>399,000 Hrs	>388,000 Hrs	>393,000 Hrs	>851,000 Hrs	158,000 @ 40°C	>800,000 @ 50°C	205,000 @ 40°C	19,00,000 @ 40°C	>851,000 Hrs	>340,000 Hrs	>340,000 Hrs	>246,000 Hrs	>556,000 Hrs
	Dimming	✓	✓	✓	✓	✓	✓	✓	✓	✓	--	--	✓	✓
INTEGRATED CONTROLS	Photocontrol	✓	✓	✓	✓	✓	✓	✓	✓	✓	✓	✓	✓	✓
	Occupancy	--	✓	--	✓	✓	✓	✓	✓	✓	--	--	✓	✓
	Wavelinx	--	--	--	✓	✓	✓	✓	✓	✓	--	--	✓	✓
CONNECTED	Enlighted	--	--	--	✓	✓	✓	✓	✓	✓	--	--	✓	✓
	Lumensafe	--	--	--	✓	✓	✓	--	✓	--	--	--	--	

Reliable. Robust. Proven.

Your connected, scalable and smart digital lighting system.

The DuraQ high performance driver is the first of its kind in the lighting industry! Providing a robust design with superior operating life versus today's LED electronic drivers, the DuraQ driver is the go-to solution for long-life lighting needs.

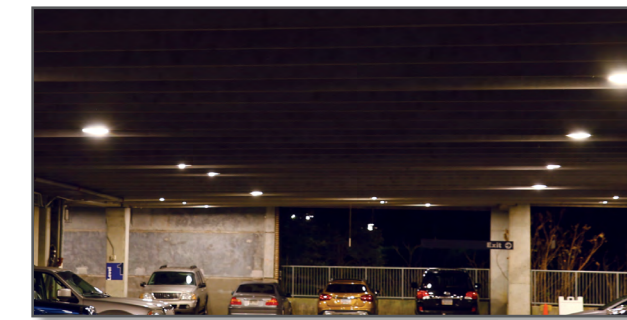


Composed of wired and wireless sensors, load controllers, keypads, luminaires and other control devices, WaveLinx addresses energy efficiency and comfort requirements while seamlessly collecting and communicating data to value-added applications.



WAVELINX WIRELESS

Take complete control of your luminaires to create energy efficient spaces across multiple floors, buildings, and even multiple sites using your mobile device and our wireless lighting control system.



WAVELINX WIRED

Take complete control of all your luminaires (LED, fluorescent, incandescent) using our rich portfolio of wired DIN rail mountable wire-based controllers to create energy-efficient spaces across multiple floors or multiple buildings.



WAVELINX LITE





Building upon known motion sensor solutions, the WaveLinx Lite solution eliminates all the hassles associated with a complex lighting controls solution making the commissioning process intuitive and flexible, giving more power to installers owners.

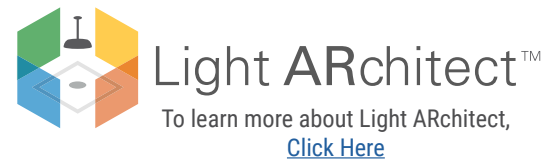
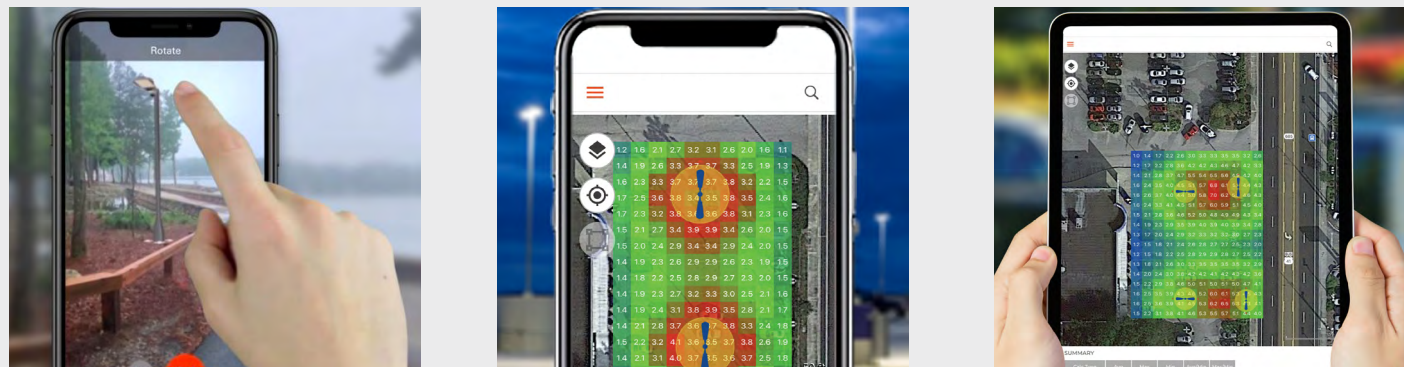
Dream. Experiment. Plan.

We've taken the guesswork out of lighting design with Light ARchitect: An augmented reality mobile app that lets you instantly visualize light fixtures in your space.

See your space in a new light with augmented reality.

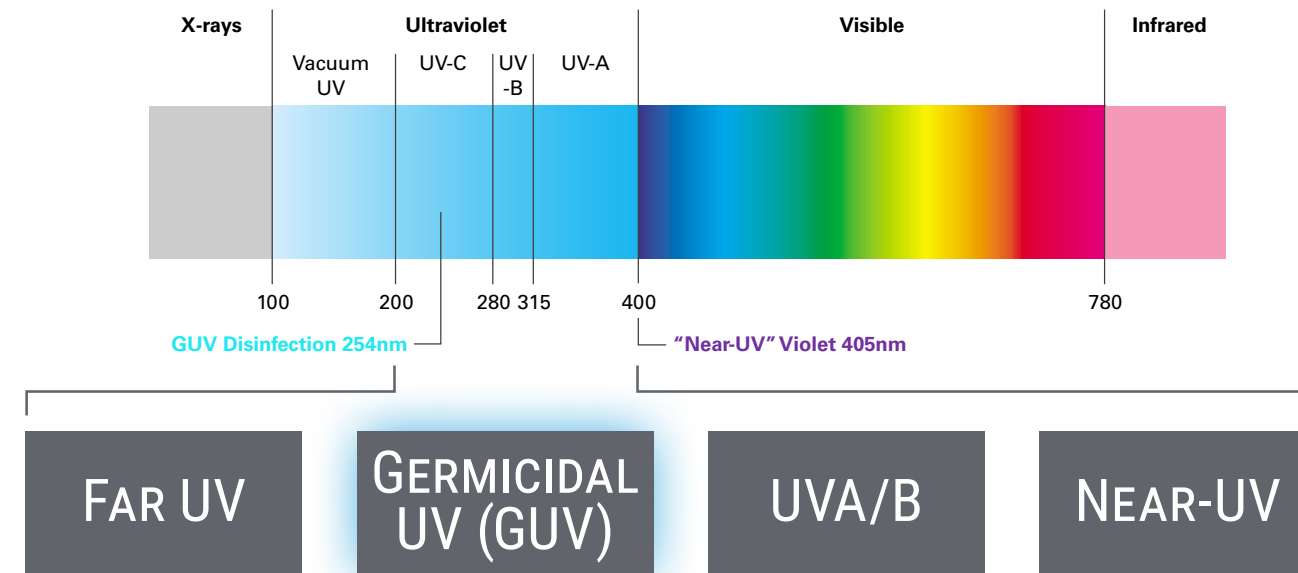
We've taken the guesswork out of lighting design with Light ARchitect, an augmented reality mobile app that lets you instantly visualize light fixtures in your space.

-  Browse state-of-the-art light LED fixtures and choose the ones you want to see in your space
-  Virtually turn lights on to get the full effect
-  Adjust the fixture's finish, lumen output, mounting height, color temperature and more
-  Take screenshots to share and email to clients or colleagues



What is Disinfection Lighting?

Make a difference in a world that is adjusting to a new normal by empowering health and safety. Fail-Safe GUV Disinfecting Solutions leverage germicidal ultraviolet (GUV) to unlock the proven power of UV-C to kill bacteria, mold, fungi and inactivate viruses - including SARS-CoV-2 (a.k.a. SARS-CoV-2). GUV is chemical-free and disinfects in minutes, saving hours of costly manual labor.



Lighting Product Lines

Ametrix
AtLite
Corelite
Ephesus
Fail-Safe
Halo
Halo Commercial
Halo Outdoor
Invue
io
Iris
Lumark
Lumière
McGraw-Edison
Metalux
MWS
Neo-Ray
Portfolio
RSA
Shaper
Streetworks
Sure-Lites

Controls Product Lines

Fifth Light Technology
Greengate
iLight (International Only)
iLumin
Zero 88

Connected Lighting Systems

Distributed Low-Voltage Power
Halo Home
iLumin Plus
Enlighted
WaveLinx



**Correctional Facilities / Waste Water
Treatment / Ports & Rail**
Infrastructure Lighting & Controls Solutions



Cooper Lighting Solutions
1121 Highway 74 South
Peachtree City, GA 30269
P: 770-486-4800
www.cooperlighting.com

© 2021 Cooper Lighting Solutions
All Rights Reserved
Publication No. BR510103EN
March 2021

Cooper Lighting Solutions is a registered trademark.

All other trademarks are property
of their respective owners.

Product availability, specifications, and compliances
are subject to change without notice.