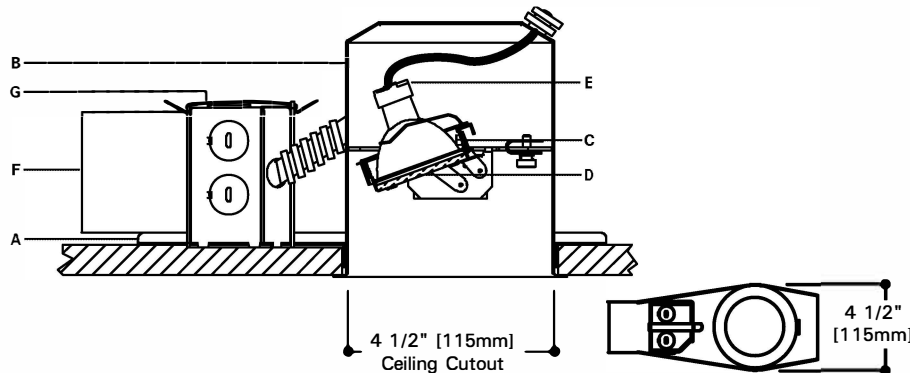


DESCRIPTION

A specification grade remodel platform designed for residential installations, the RPN3MR fits into tight 2" x 6" construction areas and from 1/2" to 1 1/2" ceiling thicknesses. The fixture is ideal when remodeling older construction. A complete installation requires two components; the RPN3MR remodel platform and a 3" Iris element.

Elements may be changed after installation to provide a variety of distributions. All Iris elements provide 50° cutoff to lamp and lamp image for glare-free lighting. Elements are visually identical and match when new fixtures and remodel fixtures are installed in the same job site.



SPECIFICATION FEATURES

A...Frame

Hot-dipped galvanized 20-gauge steel frame with integral 1/2" plaster lip. Hole is sized for a 4-1/2" [115mm] hole saw for precise, clean installations. Ceiling clip retains frame during insertion of housing.

B...Housing

One-piece steel housing allows for heat dissipation. Housing interior is matte black to provide a visually dark interior. Easy-Lock Cams quickly and easily lock to securely retain housing into ceilings from 1/2" to 1 1/2" thick.

C...Adjustability

Lamp rotates 361° and tilts 0°-35°. Translating Center-Beam Optics maximize light output. Mechanism features hot aiming capability and toolless locking for both rotation and elevation. Unit is relamped without unlocking adjustments. Elements are keyed for proper insertion. Aiming mechanism adjusts with the housing to keep optics consistent, regardless of ceiling thickness, thereby ensuring repeatable performance.

D...Lens

Soft-focus lens standard for smooth-beam patterns. Up to two filter media, which are retained in position during relamping, can be used.

E...Socket

GX5.3 base for Bi-pin MR16 lamps.

F...Transformer

Truvolt toroidal transformer with dual-input taps for proper 12.0V operation and quiet operation when dimmed. Dimmer tap compensates for inherent voltage loss from dimmers, resulting in 30% more lumens than traditional laminated transformers. Toroidal design, with 90% or greater efficiency, features a rolled one-piece continuous core of M3 grade grain oriented silicon steel complete with an integral thermal to protect against overheating. For dimming, use dimmers rated for electromagnetic transformers. Transformer is warranted for 5 years and is serviceable from below ceiling.

G...Junction Box

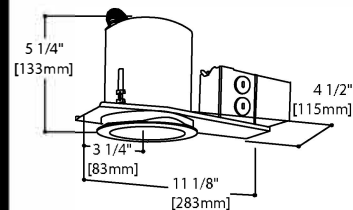
Listed for 4#14 AWG 90° C conductors, has six 1/2" pryouts.

Codes

Thermally protected, IP labeled. Insulation must be kept 3" away from sides and top of platform. Unit is listed for below-ceiling accessibility for components and inspection.

Labels

U.L. and cUL listed, standard damp label, wet listed with specific elements. Installation instructions included with every unit.



RPN3MR

50 W MR16

3" REMODEL

Energy Data

120V Input		
Lamp Watts	Input Watts	Operating Current
20	23	.19
35	41	.34
37	42	.35
42	47	.39
50	57	.48

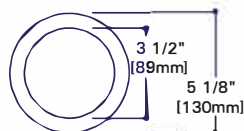
Platform

RPN3MR

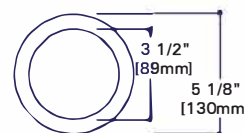
RPN-3MR = 3" Remodel Platform

DOWNLIGHT ELEMENTSCOMPLETE = PLATFORM + ELEMENT
FIXTURE

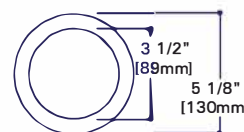
MR16 (50W maximum)

**Downlight Reflector** RPN3MR E3MR_**Downlight Baffle** RPN3MR E3MRBB**ADJUSTABLE ACCENTS**COMPLETE = PLATFORM + ELEMENT
FIXTURE

MR16 (50W maximum)

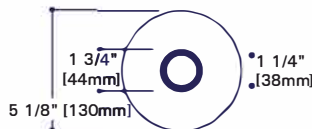
**Slot Cut Reflector** RPN3MR E3SLOT_**Angle-Cut Reflector** RPN3MR E3AA_**Angled, Shallow-Cut Reflector** RPN3MR E3AA20_**Angle-Cut Baffle** RPN3MR E3AABB**WALL WASH**COMPLETE = PLATFORM + ELEMENT
FIXTURE

MR16 (50W maximum)

**Lensed Wall Wash** RPN3MR E3LWW_**1 1/4" ADJUSTABLE PINHOLE ELEMENTS**

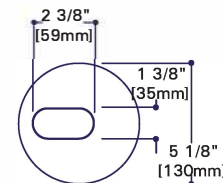
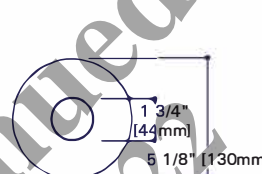
COMPLETE FIXTURE = PLATFORM + ELEMENT

MR16 (50W maximum)

1 1/4" Pinhole, Black Oculus RPN3MR E3PIN**1 1/4" Pinhole, White Oculus** RPN3MR E3PINW**1 1/4" Pinhole, Polished Aluminum Finish** RPN3MR E3PINPOL**1 1/4" Pinhole, Satin Aluminum Finish** RPN3MR E3PINSAL**2" PINHOLE ADJUSTABLE ELEMENTS**

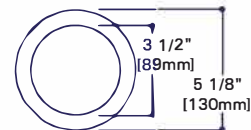
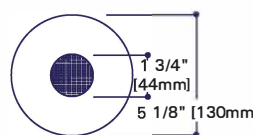
COMPLETE FIXTURE = PLATFORM + ELEMENT

MR16 (50W maximum)

2" Pinhole RPN3MR E3PINLARGE**2" Pinhole with Radius Edges** RPN3MR E3PINRD**2" Oval** RPN3MR E3OVAL**WET-LISTED/LENSED ELEMENTS**

COMPLETE FIXTURE = PLATFORM + ELEMENT

MR16 (50W maximum)

1 1/4" Lensed Pinhole RPN3MR E3AASRPIN**3 1/2" Adjustable Reflector** RPN3MR E3AASR_**OPTIONS****REFLECTOR FINISHES**

Iris provides matching finishes across all lamp sources. This creates a consistent reflector appearance, allowing you to mix a variety of sources and maintain a uniform cone appearance.

C = Specular clear Alzak® delivers maximum output.**H** = Semi-specular clear Alzak® provides slight visual identity to the aperture.**G** = Specular champagne gold Alzak® contains a pale tint of gold to add visual warmth.**B** = Specular black Alzak® delivers maximum aperture darkness.**W** = Painted white finish for a neutral daytime ceiling look.**WMH** = Semi-specular Alzak to provide visual identity, with a hint of gold to add warmth.**BB** = Polyester powder coat black baffles provide a low brightness finish when specular surfaces are not desired.**WB** = Polyester powder coat white baffles provide a match to white ceilings when not illuminated.**FLANGES****Blank** = White Die Cast Flange: White painted die cast trim ring supplied unless otherwise specified.**RAW** = Raw Cast Ring: Raw die cast finish with protective clear coat Available on all elements except Pinhole POL and SAL

Note: Self-Flange (SF) elements are not recommended for use with RPN3MR.

For RPN3MRSA-E3SA see individual specification sheet.