

DESCRIPTION

The Paralux III Series features recessed aesthetics and the latest in energy efficient technology. The luminaire incorporates a nominal 3" deep precision cell louver into a 4-3/4" deep para-contoured fixture housing. This combination creates a total high performance parabolic optical assembly for optimum performance. The series is compatible with all of today's popular ceiling systems and is available with a number of options and accessories for application versatility. The high performance luminaire is designed to offer maximum efficiency and performance for today's unique interior specifications. The Paralux III series is an excellent choice for commercial office spaces, schools, hospitals or retail merchandising areas.

SPECIFICATION FEATURES

Construction

4-3/4" deep, para-contoured housing, die formed of code gauge, prime cold rolled steel. Die embossed housing has full length die formed stiffeners for added strength. Contoured ballast/wireway cover is easily removed without tools. Die formed captive lampholder bracket fully encloses lampholder wiring permitting easy lampholder replacement. Heavy end plates are securely attached with interlocking tabs and screws. Four auxiliary fixture end suspension points provided. KO's for continuous row wiring. End plates have labor saving integral Grid-Lock feature for safety and convenience. *

Electrical**

Ballast are CBM/ETL Class "P" and are positively secured by mounting bolts. Pressure lock lampholders. UL/CUL listed. Suitable for damp locations.

Finish

Lighting grade, baked white enamel finish. Multistage, iron phosphate pretreatment ensures maximum bonding and rust inhibition.

Hinging/Latching

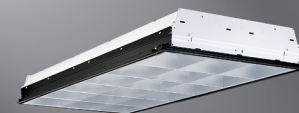
Positive cam action spring loaded, self locking, black steel latches. Safety lock T-hinges allow hinging and latching either side.

Louver

Die formed of low iridescent, vertical grain anodized aluminum. Finish is Anodic oxide coating. Accurate precision parabolic cells are held in place with interlocking feature. True-cut mitered corners. Black reveal with integral mechanical light seal around entire perimeter of louver. Louver protected from construction contaminants by polyethylene cover.

Compliance

Options to meet Buy American Act requirements.



2EP3GAX

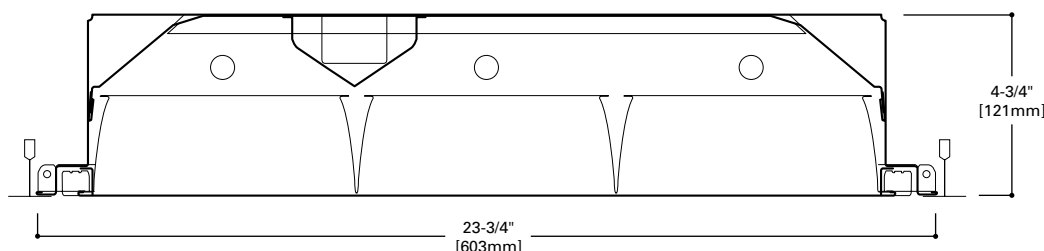
328T5

354T5

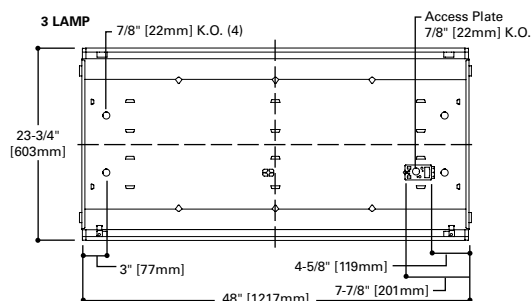
18, 24 Cell

2' X 4' PARABOLIC
3 T5 LAMPS
SEMI-SPECULAR, SPECULAR
OR WHITE PAINTED LOUVER

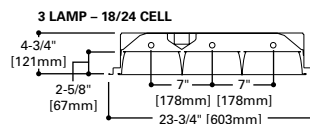
Paralux III
Recessed Static or Air
Supply Troffer



MOUNTING DATA



LAMP CONFIGURATIONS



CEILING COMPATIBILITY

G	G	G	F	MZ	Ceiling Type	Trim Type
Grid/Lay-in Standard	Concealed T	Slot Grid	Aluminum Flange Trim With Supporting Swing Gates	Modular Trim With Supporting Swing Gates	Exposed Grid	G
					Concealed T	G
					Slot Grid	G
					Flange	F
					Concealed "T" or "Z"	MZ
					Metal Pan	MZ
					(Verify compatibility/ consult factory.)	

ENERGY DATA

Input Watts:
EB Ballast & STD Lamps
328T5 (98)
354T5 (188)

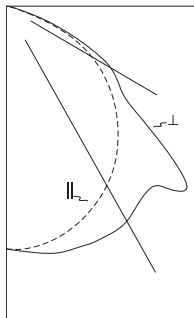
Luminaire Efficacy Rating
LER = FP-62
Catalog Number: 2EP3GAX-332
Yearly Cost of 1000 lumens,
3000 hrs at .08 KWH = \$3.89

**Reference the lamp/ballast data in the Technical Section for specific lamp/ballast requirements.

LINEAR DISCONNECT

Designed to provide safe and convenient means of disconnecting power

PHOTOMETRICS



2EP3GAX-328T5S361

Electronic Ballast

F28T5 Lamps
2600 Lumens

Spacing criterion:
(II) 1.2 x mounting
height, (⊥) 1.5 x
mounting height

Efficiency 77.5%

Test Report:
220P223

LER = FP-62

Yearly Cost of 1000
lumens, 3000 hrs at
.08 KWH = \$3.89

Coefficients of Utilization

Effective floor cavity reflectance										20%										30%										10%										0%									
rc	80%					70%					50%					30%					10%					0%																							
rw	70	50	30	10	70	50	30	10	50	30	10	50	30	10	50	30	10	50	30	10	50	30	10	0																									
RCR																																																	
0	92	92	92	92	90	90	90	90	86	86	86	82	82	82	79	79	79	77	77	77	77	77	77	77																									
1	85	82	79	77	83	80	78	75	77	75	73	74	72	71	71	70	69	67	67	67	67	67	67	67																									
2	78	72	68	64	76	71	67	63	68	65	61	66	63	60	64	61	59	57	57	57	57	57	57	57																									
3	72	64	58	53	70	63	57	53	61	56	52	58	55	51	57	53	50	49	49	49	49	49	49	49																									
4	66	57	50	46	64	56	50	45	54	49	45	52	48	44	51	47	43	42	42	42	42	42	42	42																									
5	60	51	44	39	59	50	44	39	48	43	39	47	42	38	45	41	38	36	36	36	36	36	36	36																									
6	56	46	39	34	54	45	39	34	44	38	34	42	37	34	41	37	33	32	32	32	32	32	32	32																									
7	52	41	35	30	50	41	35	30	40	34	30	39	33	30	37	33	29	28	28	28	28	28	28	28																									
8	48	38	31	27	47	37	31	27	36	31	27	35	30	26	34	30	26	25	25	25	25	25	25	25																									
9	45	35	28	24	44	34	28	24	33	28	24	32	27	24	32	27	24	22	22	22	22	22	22	22																									
10	42	32	26	22	41	31	26	22	31	25	22	30	25	22	29	25	21	20	20	20	20	20	20	20																									

Zonal Lumen Summary

Zone	Lumens	%Lamp	%Fixture
0-30	1739	22.3	28.8
0-40	2902	37.2	48.0
0-60	5261	67.5	87.1
0-90	6041	77.5	100.0
0-180	6041	77.5	100.0

Typical VCP Percentages

Room Size (Ft.)	Height Along		Height Across	
	8.5'	10.0'	8.5'	10.0'
20 x 20	66	66	63	64
30 x 30	71	68	69	66
30 x 60	74	71	72	70
60 x 30	76	74	75	72
60 x 60	78	75	77	73

Candela

Angle	Along II	45°	Across ⊥
0	2113	2113	2113
5	2117	2134	2148
10	2088	2137	2186
15	2036	2126	2194
20	1965	2080	2194
25	1878	2019	2179
30	1776	1948	2137
35	1657	1860	2050
40	1516	1741	2038
45	1365	1628	2228
50	1206	1549	1574
55	1035	1339	1205
60	843	807	1036
65	611	544	706
70	320	307	388
75	109	117	134
80	48	48	49
85	17	16	14
90	0	0	0

ORDERING INFORMATION

SAMPLE NUMBER: 2EP3GAX-328T5S361-UNV-EBT1-U

Domestic Preferences ⁽¹¹⁾ [Blank] =Standard BAA =Buy American Act Rating Blank =Standard ATW-SW4 =Chicago Rated HR =Heat Removal ⁽¹⁾ Width 2=2' Width EP =Paralux Louver 3=3" Louver Depth Trim Type G =Grid/Lay-in (Standard) G =Concealed T/Slot Grid ⁽⁸⁾ F =Aluminum Flange Trim ⁽⁹⁾ MZ =Modular Trim AX =Air Supply Floating Louver X =Blank Side/Floating Louver - Non-Air Supply (Omit A) AVX =Air Supply Floating Louver with Directional Air Vane (Add V)	Number of Lamps 3=3 Lamps ⁽³⁾ Wattage (Length) 28T5=28W T5 (48") 54T5=54W T5HO (48") Louver Color S =Silver W =White Cell Configuration 36=3 Rows of 6, 18 Cell 38=3 Rows of 8, 24 Cell Louver Finish I =Semi-Specular/Haze (Low Iridescent) Standard (Silver Only) P =Painted (White only) Option - Aluminum Flange Trim ⁽⁹⁾ Blank =SW (Single White) Type Color 'S' Single 'N' Natural 'R' In Row 'W' White 'E' End of Row Voltage ⁽⁴⁾ 120V =120 Volt 277V =277 Volt 347V =347 Volt UNV =Universal Voltage 120-277 ⁽⁵⁾	Options GL =Single Element Fuse GM =Double Element Fuse WTR =White Reveal Flex =Flex Installed (Reference Flex ordering information) EL =Emergency Installed ^{(7), (10)}	Ballast Type EBT =T5 or T5HO Electronic Program Rapid Start. Total Harmonic Distortion < 10%. Standard Ballast Factor=1.0 Ballast/Factor Type EBT_N =T5 Electronic ⁽⁶⁾ Program Rapid Start. Total Harmonic Distortion < 10%. Normal Ballast Factor=.90 EBT_HDIM =T5 Electronic Program Rapid Start. Total Harmonic Distortion < 10%. Step Dimming, High Ballast Factor=1.15 Number of Ballasts 1=1 Ballast 2=2 Ballasts 3=3 Ballasts	Options PAF =Painted After Fabrication REP =Riveted Endplates Packaging U =Unit Pack PAL =Job Pack, out of carton PALC =Job Pack, in carton
--	---	--	--	--

ACCESSORIES ⁽¹²⁾

EQ-CLIP-U=T-BAR Safety Earthquake Clips ⁽²⁾

NOTES: ⁽¹⁾ Integral end plate grid lock feature not available in heat removal. ⁽²⁾ An EQ Grid Clip is recommended for all 9/16" ceiling systems. Four required per fixture. ⁽³⁾ Standard off-center ballast on 3-lamp fixtures. ⁽⁴⁾ Products also available in non-US voltages and frequencies for international markets. ⁽⁵⁾ Not available when specifying emergencies, voltage must be specific. ⁽⁶⁾ .90 ballast factor available for 2 or 3 14WT5 or 28WT5 lamps only. ⁽⁷⁾ Fixtures equipped with "EL". ⁽⁸⁾ Option may require a 5-1/2" housing depth. If installing in field, must use low profile battery pack. ⁽⁹⁾ Louver is recessed by 5/16" in Concealed T or Slot Grid T. ⁽¹⁰⁾ Please specify required voltage, 120V or 277V. ⁽¹¹⁾ Only product configurations with this designated prefix are built to be compliant with the Buy American Act of 1933 (BAA). Please refer to **DOMESTIC PREFERENCES** website for more information. Components shipped separately may be separately analyzed under domestic preference requirements. ⁽¹²⁾ Accessories sold separately will be separately analyzed under domestic preference requirements. Consult factory for further information.

Specifications & dimensions subject to change without notice. Consult your Cooper Lighting Solutions Representative for availability and ordering information.

SHIPPING DATA

Catalog No.	Wt.
2EP3GAX-328T5S361	42 lbs.
2EP3GAX-328T5S381	42 lbs.
2EP3GAX-354T5S361	42 lbs.
2EP3GAX-354T5S381	42 lbs.