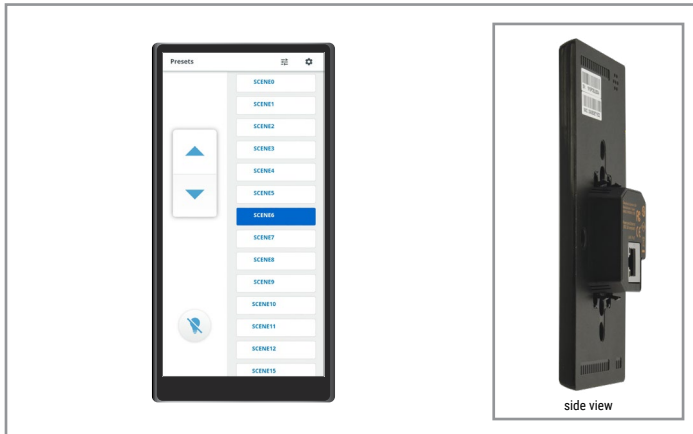


Project		Catalog #		Type	
Prepared by		Notes		Date	



WaveLinx Pro

TSE57 Touchscreen

Provides an elegant and discreet light control for any WaveLinx Pro controlled space

Typical Applications

Office • Education • Healthcare • Hospitality • Retail

Interactive Menu

- Order Information page 2
- Additional Resources page 3
- Wiring Diagrams page 4
- Connected Systems page 5
- Product Warranty

Product Certification



Title 47
Part 15
Class B

- Meets latest ASHRAE Standard 90.1 requirements
- Meets latest IECC requirements
- Meets latest CEC Title 24 requirements

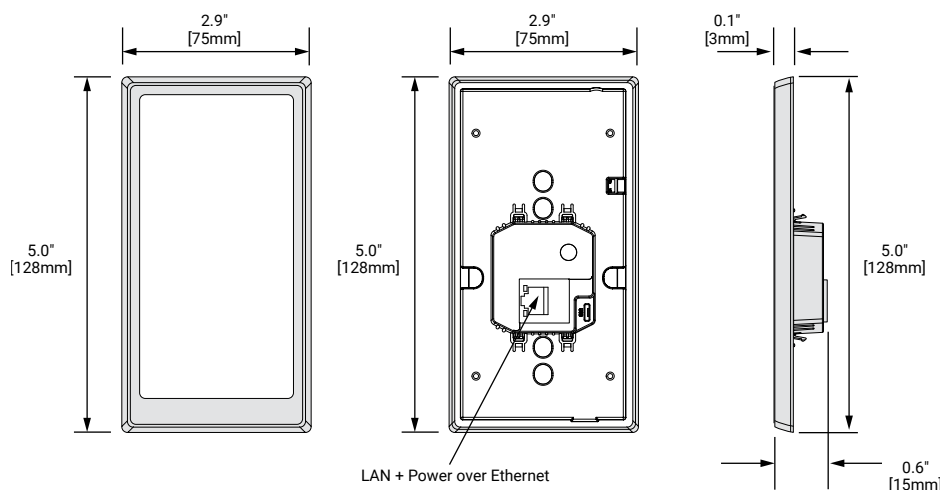
Product Features



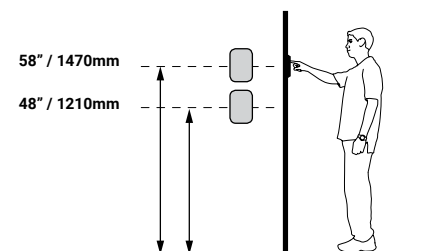
Top Product Features

- **Light control** – Control the lights for a room/open space by allowing users to recall the light scenes/presets defined for the area and to raise/lower the light level for the entire area or the zones defined within an area.
- **Architectural design** – Low profile design with edge to edge glass and high resolution display making the touchscreen look amazing on any wall. The touchscreen's user interface has been designed to ensure that users can immediately understand how to operate the touchscreen.
- **Easy installation** – The touchscreen easily mounts in a single gang switch box (minimum 1.4" / 35mm depth required) and is powered via PoE (IEEE 802.3af). Once powered, all the installer has to do, is select the Wireless Area Controller (WAC) discovered on the network and one of the user defined areas. All the information with regards to the scene names, zone names is automatically imported from the Wireless Area Controller.

Dimensional Details



Mounting Height



Order Information

The touchscreen is an accessory to the WaveLinx Pro connected lighting (WCL) system and requires a Wireless Area Controller (WAC) for full functionality.

Catalog Number

Catalog Number	Description
TSE57- WLX-B	5.7" Touchscreen for Wavelinx

Required Accessories

All WaveLinx Pro connected lighting (WCL) system accessories require at least one WaveLinx Pro Wireless Area Controller (WAC2) for communications. Ensure the bill of material includes one of the following components.

Catalog Number

Catalog Number	Description
WAC2-POE	Wireless Area Controller G2, PoE powered
WAC2-120	Wireless Area Controller G2 with 120VAC to PoE Injector

Product Specifications

Key Features

- **Light control** – Control the lights for a room/open space by allowing users to recall the light scenes/presets defined for the area and to raise/lower the light level for the entire area or the zones defined within an area.
- **Architectural design** – Low profile design with edge to edge glass and high resolution display making the touchscreen look amazing on any wall. The touchscreen's user interface has been designed to ensure that users can immediately understand how to operate the touchscreen.
- **Easy installation** – The touchscreen easily mounts in a single gang switch box (minimum 1.4" / 35mm depth required) and is powered via PoE (IEEE 802.3af). Once powered, all the installer has to do, is select the Wireless Area Controller (WAC) discovered on the network and one of the user defined areas. All the information with regards to the scene names, zone names is automatically imported from the Wireless Area Controller.

Mechanical

Size: 5.0" x 2.9" x 0.3" (128 x 75 x 8mm) 0.6" (15mm) depth inside wall box

Environment:

- **Operating temperature:** 32°F to 104°F (0°C to 40°C)
- **Storage temperature:** 4°F to 158°F (-20°C to 70°C)
- **Relative humidity:** 0 - 90% non-condensing
- For indoor use only

Mounting: North America: single-gang switchbox (Arlington LV1)

Europe: single-gang Ø 65mm outlet switchbox (IEC/EN 60670)

UK: single gang electrical box BS 4662, BSEN 60670

Mounting Height: 48"- 58" (121cm-147cm) above finished floor

Color: Black trim

Housing: High glass plastic

Electrical

Input Power:

- PoE (IEEE 802.3af)
- 4W (typical) / 8W (max)

Display:

- High performance 5.77" LCD
- High definition resolution (1440 x 720)
- Projected Capacitive Touch supporting multi-touch and gesture

Network:

- Gigabit Ethernet controller
- RJ-45 Ethernet port connectivity

System Performance

Capacity: Up to 16 per WAC

Standards/Ratings

- cULus Listed - Energy Management Equipment (UL916)
- FCC Title 47, Part 15 Class B
- CE
- Meets latest ASHRAE Standard 90.1 requirements
- Meets latest IECC requirements
- Meets latest CEC Title 24 requirements

Environmental Regulations:

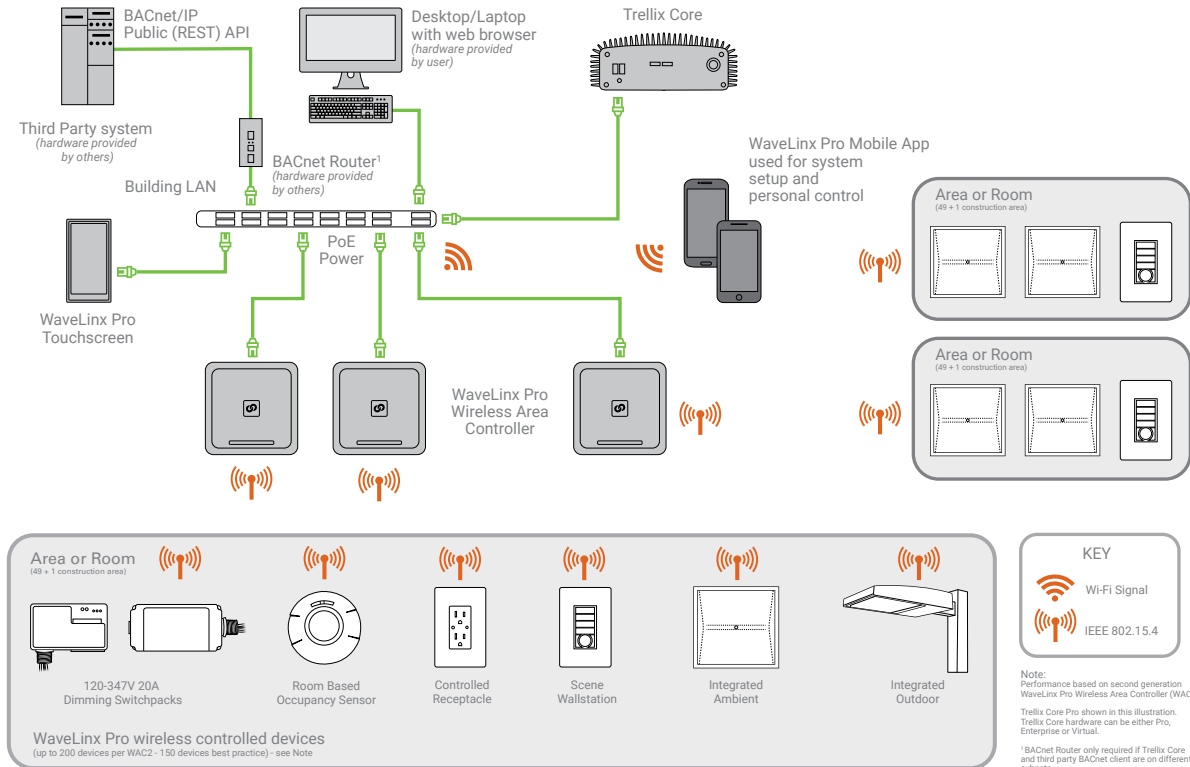
- RoHS Directive 2011/65/EU
- WEEE Directive 2012/19/EU

Warranty

Five year warranty standard

System Architecture

This diagram shows the main components of the WaveLinx Pro connected lighting (WCL) system. The WCL system communicates using wireless mesh technology based on the 802.15.4 standard. A PoE LAN connection for each Wireless Area Controller (WAC) is required for power and data access to the building wireless network. System setup is achieved through a simple mobile application via wireless communication to the system.



Overview

The WaveLinx Pro TSE57 touchscreen provides an elegant and discreet light control for any WaveLinx Pro controlled space. The portrait-oriented 5.7" [14.5cm] touchscreen features a low-profile design with edge to edge glass and an extremely responsive display making it a great architectural addition to conference rooms, executive offices and open spaces.

Installation

- Connect the Touchscreen to a WaveLinx Pro connected PoE (IEEE 802.3af) enabled switch via an ethernet (CAT5 or higher) cable using the RJ45 port on the rear of the touchscreen
- The Touchscreen flush mounts in a portrait orientation to a single-gang switch box
- Use the Settings menu (PIN protected) on the Touchscreen for setup, i.e. associate it to a Wireless Area Controller and select one of the areas configured on the selected Wireless Area Controller

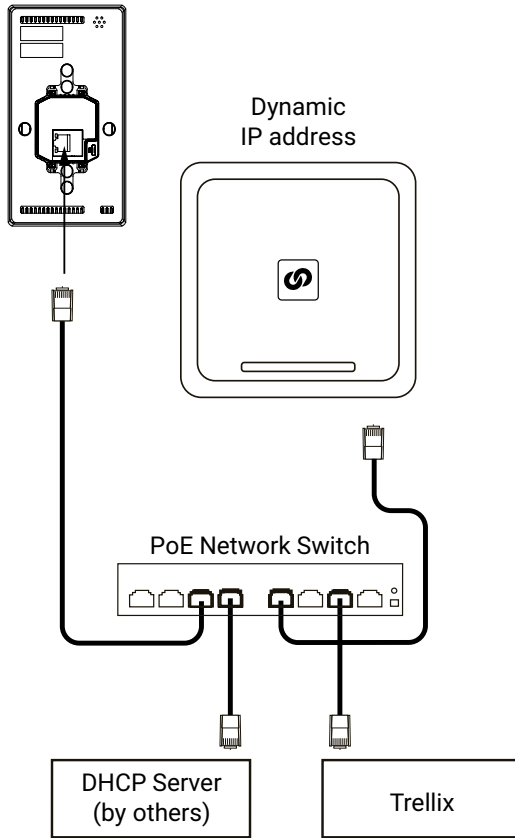
For more information, please refer to the WaveLinx Pro Touchscreen Installation Guide.

Wiring Diagrams

Network Installation

Stand Alone Installation

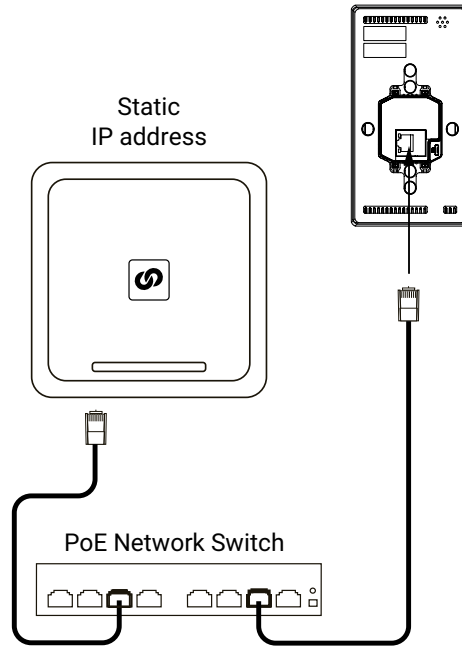
Dynamic IP address



Dynamic IP address

Static IP address

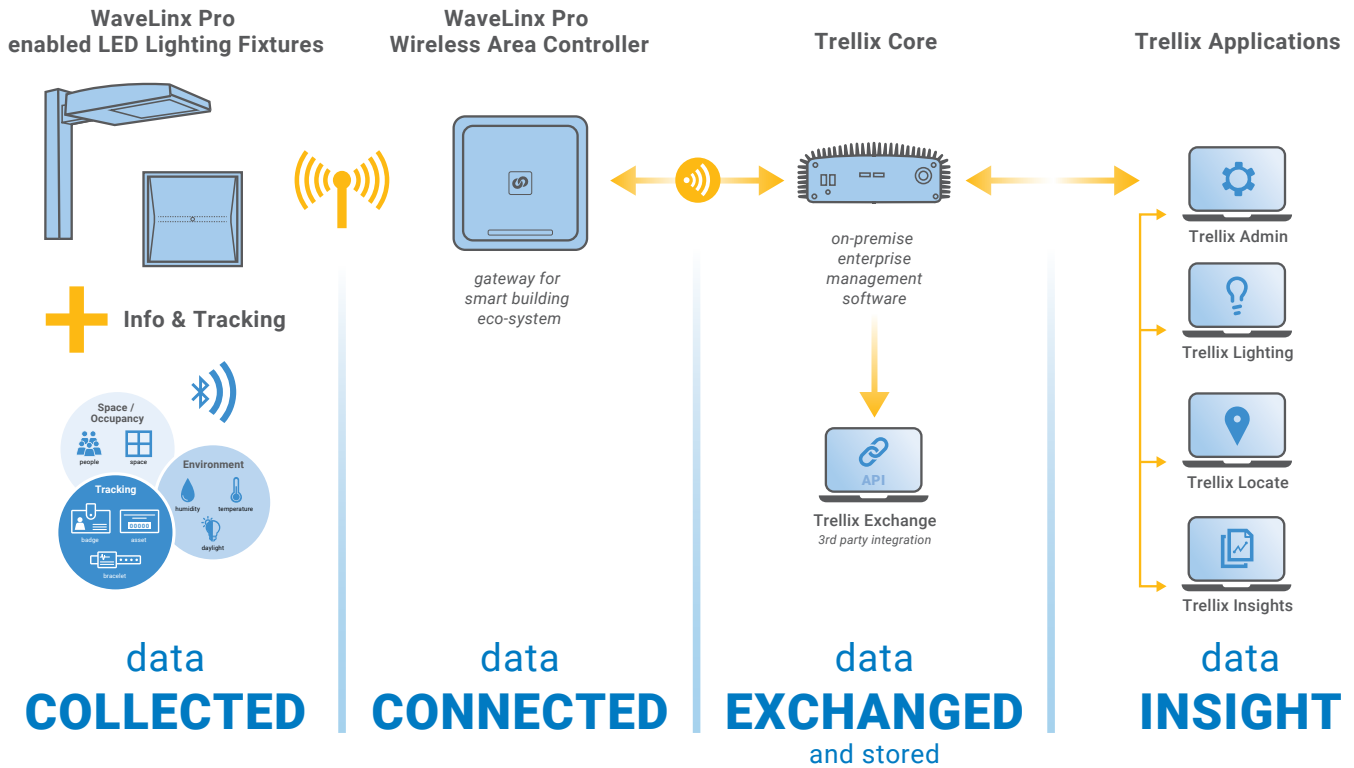
Static IP address



Better Data. Better Decisions.

Trellix combined with our WaveLinx Pro connected lighting system is a distributed network of LED lighting fixtures with integrated sensing and beacon technology that captures real-time data; making your facility smarter so you can make smarter decisions.

Trellix provides an open IoT platform and infrastructure that connects intelligent sensors leveraging the real-estate of the physical light fixture to solve higher complexity problems in a commercial building to deliver actionable insights through the aggregation of valuable data.



- Control Systems**
- Trellix
 - WaveLinx Pro wireless