

## DESCRIPTION

The Fail-Safe FMR combines maximum security construction features with energy saving technology. This recessed luminaire is designed for applications utilizing solid ceiling plaster or drywall construction. Luminaire utilizes a one-piece overlapping door frame, security lensing and tamper-resistant fasteners to maximize impact-resistance and prevent contraband concealment and unauthorized fixture penetration. UL/cUL listed for damp locations. The FMR is ideal for confinement/security applications. Suitable for use in inmate cells, psychiatric wards, secure corridors and general population areas.

Catalog #		Type
Project		
Comments		Date
Prepared by		

## SPECIFICATION FEATURES

### Fasteners

Stainless steel tamper-resistant T20 TORX® screws with center pin reject standard. Allen-head screws with center pin reject optional (SF3).

### Housing

Die-formed CRS body with welded corners to form a one-piece housing which prevents contraband concealment and unauthorized fixture penetration.

### Finish

High gloss, electrostatically applied, white powder coat finish, average minimum reflectance 92%.

### Hinge

Concealed piano hinge optional.

### Door

One-piece, CRS door frame (12, 14, 16 or 18 ga.) with die-formed edges and tightly closed corners increases rigidity. Aircraft cable secures door to housing.

### Light Mask

Gasketing surrounds door frame and prevents light leaks.

### Mounting

Specify Yoke Mounting Frame (YMF) or Swing-Out Brackets (SWBR).

### Mounting Yoke Assembly

16 ga., galvanized steel plaster frame assembly (see Accessories).

### Lens

Choice of prismatic acrylic, prismatic polycarbonate or prismatic tempered glass on fixture side, clear polycarbonate or clear tempered glass on environmental side.

### Lamps

By others.

### Lens Retention

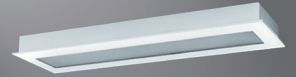
Lens secured by thru-studs and vertically adjustable internal CRS hold-downs.

### Ballast

Electronic Class P, CBM/ETL ballast.

### Labels

UL/cUL listed for damp location. Wet location under covered ceiling optional.



## FMR12

1 x 1

1 x 2

1 x 4

Biaxial

Quad

TT

T5

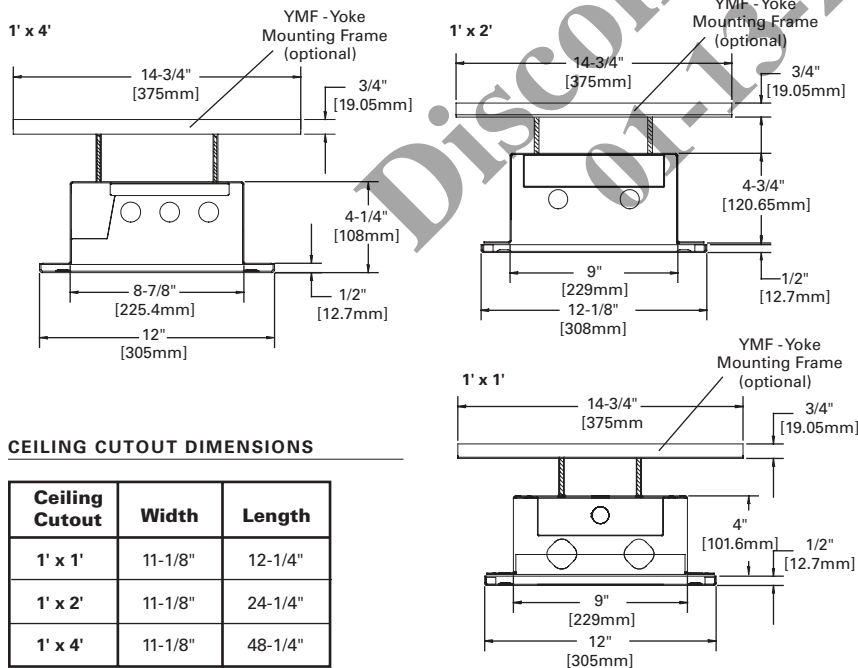
T8

Fluorescent

Confinement/Correctional

RECESSED FLANGE

## CROSS-SECTION DIMENSIONS / SHOWN WITH OPTIONAL YOKE MOUNTING FRAME - YMF

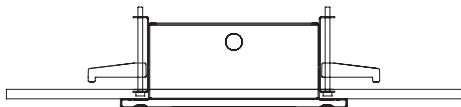


## CEILING CUTOUT DIMENSIONS

Ceiling Cutout	Width	Length
1' x 1'	11-1/8"	12-1/4"
1' x 2'	11-1/8"	24-1/4"
1' x 4'	11-1/8"	48-1/4"

## OPTIONAL SWING-OUT BRACKET (SWBR)

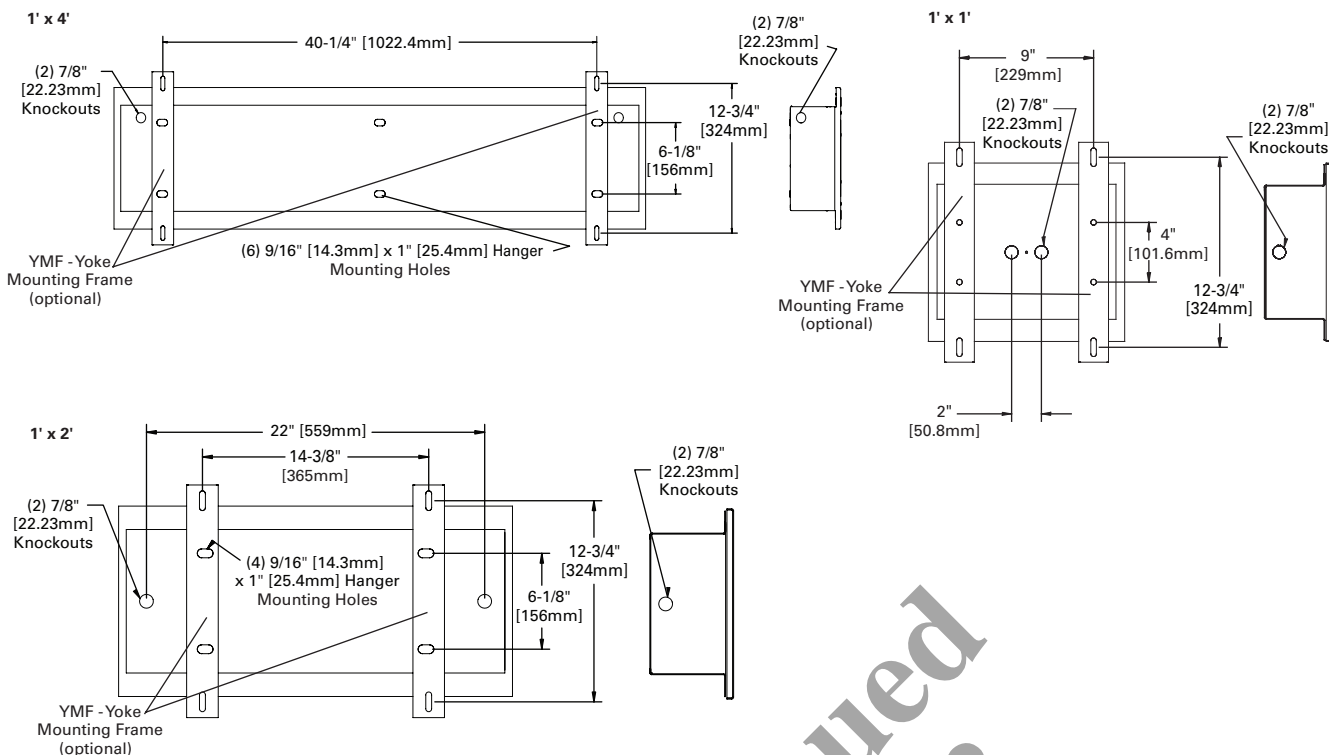
1' x 1', 1' x 2', 1' x 4'



TORX® is a registered trademark of Camcar Division of Textron Inc.

**Electronic Ballast Data**  
Consult Cooper Lighting Solutions Representative

## TYPICAL MOUNTING DETAIL / SHOWN WITH OPTIONAL YOKE MOUNTING FRAME - YMF



## ORDERING INFORMATION

SAMPLE NUMBER: FMR-D12-332-UNV-80/86-EB81-GLR

Fixture ships with no mounting hardware, unless specified in "mounting options"

Product Family	Door	Fixture Width	Lamp Type	Voltage	Lens Type	Ballast	Options	Accessories (Order separately)
<b>FMR</b>		<b>12</b>			/			
<b>FMR</b> =Maximum Security Recessed Flange <sup>8</sup>			<b>120</b> =120V <b>277</b> =277V <b>UNV</b> =120V-277V <b>347</b> =347V			<b>EL4</b> =EM Pack, T8, Biax <b>EL5</b> =EM Pack, T5, T5HO <b>FNL</b> =Fluorescent Night Light - 5, 7, 9 Watt <sup>10</sup> <b>FNL13</b> =Fluorescent Night Light - 13 Watt <sup>10</sup> <b>LNL</b> =LED Night Light <b>GLR</b> =Fuse and Holder <b>14G</b> =14-Gauge Housing <b>CPHF</b> =Concealed piano hinge, full length <b>RGT</b> =Removable Gear Tray <b>WL</b> = Wet Location <b>Mounting Options</b> <b>SWBR</b> =Swing-out brackets (4) <b>YMF</b> =Yoke Mounting Frame (2) <sup>6</sup>  <b>Stainless Steel Door</b> <b>SSN</b> =Natural Brushed Finish <b>SSP</b> =Polyester Powder Coat Finish  <b>Fasteners</b> <b>SF3</b> =Allen-Head (center pin reject)  <b>9306</b> =Allen-Head Wrench <b>VRSD</b> =T20 Center Pin Tamper- proof TORX® -Head screwdriver  <b>PF12-1FT</b> = Plaster Frame and Yoke Assembly <b>PF12-2FT</b> = Plaster Frame and Yoke Assembly <b>PF12-4FT</b> = Plaster Frame and Yoke Assembly		
<b>S</b> = 12 ga. (Ultimax) <b>X</b> = 14 ga. (Maximum) <b>D</b> = 16 ga. (Medium) <b>N</b> = 18 ga. (Minimum)			<b>Inner Layer (optional)</b> <sup>2,7</sup> /  <b>90</b> =0.005 UV Absorbing Overlay  <b>Fixture Side</b> <b>80</b> =0.125 Prismatic Acrylic <b>81</b> =0.156 Prismatic Polycarbonate <b>82</b> =0.187 Prismatic Polycarbonate <b>93</b> =0.156 Prismatic Tempered Glass			<b>Environmental Side</b> <sup>2,7</sup> <b>84</b> =0.125 Clear Polycarbonate <b>85</b> =0.187 Clear Polycarbonate <b>86</b> =0.250 Clear Polycarbonate <b>87</b> =0.375 Clear Polycarbonate <b>88</b> =0.500 Clear Polycarbonate <b>94</b> =0.187 Clear Tempered Glass <b>96</b> =0.250 Clear Tempered Glass <b>97</b> =0.375 Clear Tempered Glass <b>98</b> =0.500 Clear Tempered Glass		
<b>12</b> = 12" Wide			<b>Electronic Ballasts</b> <sup>1</sup>  <b>EB81</b> =One Ballast for use with T8 Lamp <b>EB82</b> =Two Ballasts for use with T8 Lamp <b>EBT1</b> =One Ballast for use with Compact Lamp <b>EBT2</b> =Two Ballasts for use with Compact Lamp <b>EBX1</b> =One Ballast for use with Biaxial Lamp <b>EBX2</b> =Two Ballasts for use with Biaxial Lamp  <b>EB51</b> =One Ballast for use with T5 Lamp <b>EB52</b> =Two Ballasts for use with T5 Lamp					
<b>1' Nom. Length</b> <b>Compact Fluorescent</b> <sup>9</sup> <b>126</b> =(1) 13W Lamp <b>213</b> =(2) 13W Lamps <b>226</b> =(2) 26W Lamps <b>313</b> =(3) 13W Lamps <sup>5</sup>			<b>4' Nom. Length</b> <b>T5 Fluorescent</b> <b>128</b> =(1) 28W Lamp <b>228</b> =(2) 28W Lamps <b>328</b> =(3) 28W Lamps <sup>3</sup> <b>154</b> =(1) 54W Lamp <b>254</b> =(2) 54W Lamps <b>354</b> =(3) 54W Lamps <sup>4</sup>					
<b>2' Nom. Length</b> <b>T5 Fluorescent</b> <b>114</b> =(1) 14W Lamp <b>214</b> =(2) 14W Lamps <b>314</b> =(3) 14W Lamps <b>124</b> =(1) 24W Lamp <b>224</b> =(2) 24W Lamps <b>324</b> =(3) 24W Lamps			<b>T8 Fluorescent</b> <b>132</b> =(1) 32W Lamp <b>232</b> =(2) 32W Lamps <b>332</b> =(3) 32W Lamps					
<b>T8 Fluorescent</b> <b>117</b> =(1) 17W Lamp <b>217</b> =(2) 17W Lamps <b>317</b> =(3) 17W Lamps  <b>Biaxial Fluorescent</b> <b>140BX</b> =(1) 40W Lamp <b>240BX</b> =(2) 40W Lamps								
<b>Notes:</b>  <sup>1</sup> For specific electronic ballast, specify brand and catalog number. <sup>2</sup> See Lens Ordering Guide for other available lens choices. <sup>3</sup> Not available with EM ballast. <sup>4</sup> EBP available with single 3-lamp ballast. <sup>5</sup> Not compatible with FNL. <sup>6</sup> Yoke Mounting Frame consists of (2) C-channel frames 14-3/4" length, with (4) 3-1/2" bolts and nuts to attach the YMF to the fixture housing. Installer typically attaches the YMFs to a rigid structure above, using the (2)								

## Notes:

- For specific electronic ballast, specify brand and catalog number.
- See Lens Ordering Guide for other available lens choices.
- Not available with EM ballast.
- EBP available with single 3-lamp ballast.
- Not compatible with FNL.
- Yoke Mounting Frame consists of (2) C-channel frames 14-3/4" length, with (4) 3-1/2" bolts and nuts to attach the YMF to the fixture housing. Installer typically attaches the YMFs to a rigid structure above, using the (2) out-board holes in the YMF.
- See Lens Ordering Guide (on website) for additional lens choices.
- Fixture does not include mounting hardware. SWBR, YMF options, or PF accessory required.
- Compact fluorescent - "twin-tube" lamps only.
- Voltage specific.