

## DESCRIPTION

The CFS is designed for use in non-laminar air flow clean rooms. This surface mounted clean room luminaire has a hole-free design and is enclosed and gasketed to protect against infiltration of particles and airborne bacteria. The sealed housing and door frame allow relamping without contamination of the clean areas. An emergency battery pack is available as an option. UL/cUL listed for wet locations, and manufactured in accordance with U.S.D.A. and F.D.A. All fixtures have been tested and reported in compliance with Federal Standard 209E, Class 100 (M3.5).

Catalog #		Type
Project		
Comments		Date
Prepared by		

## SPECIFICATION FEATURES

### Application

The CFS is suitable for use in I.E.S. Class 100, 1,000, 10,000 and 100,000 clean room environments. Applications include clean rooms, technical and biomedical labs, food processing/testing centers and pharmaceutical labs.

### Fasteners

Flush mounted, stainless steel machine screws secure through captive cage nuts in housing and are evenly spaced to compress gasketing on all sides.

### Housing

Die-formed, 20 ga. CRS with tightly butted and seam welded, sealed end caps. Contains no holes that would allow air passage.

### Finish

High gloss, electrostatically applied, white powder coat finish, average minimum reflectance 92%, 1000 hour salt spray test.

### Hinge

Two braided, stainless steel cables on one side of door provide hinging.

### Door

One-piece, 18 ga., fully gasketed, outside door. with die-formed and beveled edges, eliminates seams that could entrap microscopic contaminants.

### Gasket

White, closed cell, Flexiseal(TM) triple gasketing system surrounds perimeter of lens to seal lens to door frame and around perimeter of door to seal door to housing. Sealing from fixture to ceiling by others.

### Access

A gasketed access plate on top of the housing with two flattened, 7/8" diameter knockouts allows connection of vapor tight conduit fitting.

### Lens

One-piece, clear Pattern 12 acrylic lens with internal prism pattern. Choice of prismatic acrylic, prismatic polycarbonate, Radialens or prismatic tempered glass on environmental side. See Lens Options.

### Lamps

(By Others)

### Lens Retention

Unique, Particlock(TM) lens retention system utilizes continuous, 18 ga. media clampdowns to sandwich gasketing and integrate lens and door frame for even environmental seal.

### Ballast

Electronic Class P, CBM/ETL ballast.

### Labels

UL/cUL listed for wet locations under covered ceiling.



**CFS24**

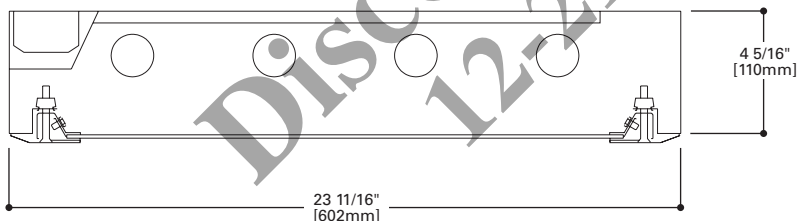
2x2

2x4

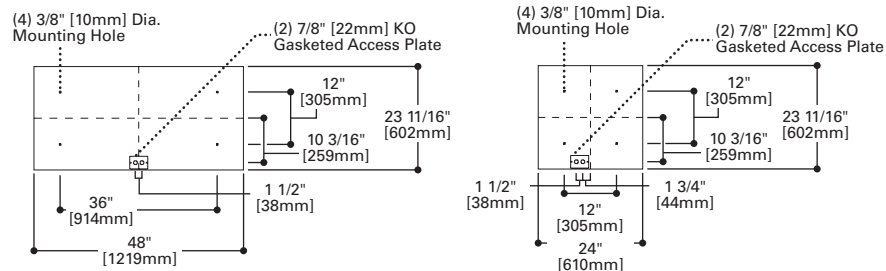
Cleanroom

**SURFACE**

Overlapping Door

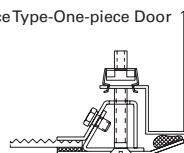


## MOUNTING DIMENSIONS



## DOOR FRAME

Surface Type-One-piece Door



## ORDERING INFORMATION

SAMPLE NUMBER: CFS-24-432-120-IP12-EB82-SSP-EL4

Product Family	Width	Lamp Type	Voltage 1	Lens Type 4	Ballast	Overlapping Door/Finish Options	Options
CFS	24						
CFS=Fluorescent Surface Type			120= 120V 277=277V 347=347V UNV=120V-277V		Electronic Ballast 3 EB51= (1) Ballast for use with T5 Lamp EB52=(2) Ballasts for use with T5 Lamp EB81= (1) Ballast for use with T8 Lamp EB82=(2) Ballasts for use with T8 Lamp EBX1=EB1 Ballast for use with Biaxial Lamp EBX2=(2) Ballast for use with Biaxial Lamp	BLANK=Steel, overlapping, powder coat painted white ALP=Aluminum, powder coat painted finish SSN=Stainless Steel Brushed finish SSP=Stainless Steel, Polyester powder coat finish	
24=24"							
2' Fixture Length 5 T5 Fluorescent 214=(2) 14W Lamps 314=(3) 14W Lamps 414=(4) 14W Lamps 224=(2) 24W Lamps 324=(3) 24W Lamps 424=(4) 24W Lamps T8 Fluorescent 217=(2) 17W Lamps 317=(3) 17W Lamps 417=(4) 17W Lamps 617=(6) 17W Lamps Biaxial Fluorescent 240BX=(2) 40W Lamps 340BX=(3) 40W Lamps 440BX=(4) 40W Lamps		4' Fixture Length T5 Fluorescent 228=(2) 28W Lamps 328=(3) 28W Lamps 428=(4) 28W Lamps 254=(2) 54W Lamps 354=(3) 54W Lamps 454=(4) 54W Lamps 654=(4) 54W Lamps T8 Fluorescent 232=(2) 32W Lamps 332=(3) 32W Lamps 432=(4) 32W Lamps 632=(6) 32W Lamps		IK12=Pattern 12 Prismatic Acrylic, 0.110" thick IP12=Pattern 12 Prismatic Polycarbonate, 0.110" thick KSH25= Linear Ribbed Acrylic, 0.115" thick 2 93=Prismatic Tempered Glass, 0.156" thick		EL4=EM Pack, T8, BX EL5=EM Pack, T5, T5HO GLR=Fuse and Holder RIF=Radio Frequency Interference Filter AM=Anti-microbial matte white finish 6  Housing Options SHN=Stainless Steel, Brushed finish SHP=Stainless Steel, powder coat painted white ALH=Aluminum, powder coat painted white	
NOTES: 1 Products also available in non-US voltages and 50Hz for international markets. Consult your Cooper Lighting Solutions Representative for availability and ordering information. 2 The KSH25 provides improved visual performance and wide angle distribution. This lens has an integral prism pattern designed so that prisms face the lamp cavity and still supply superior photometrics. Highly recommended for all high-tech manufacturing environments. 3 For specific electronic ballast, specify brand and catalog number.							

## NOTES:

- 1 Products also available in non-US voltages and 50Hz for international markets. Consult your Cooper Lighting Solutions Representative for availability and ordering information.
- 2 The KSH25 provides improved visual performance and wide angle distribution. This lens has an integral prism pattern designed so that prisms face the lamp cavity and still supply superior photometrics. Highly recommended for all high-tech manufacturing environments.
- 3 For specific electronic ballast, specify brand and catalog number.
- 4 Refer to Lens Ordering Guide for additional lens choices.
- 5 Em Pack not available with (2) T5 ballasts.
- 6 AM not available with brushed finish stainless steel.

Discontinued  
12-21-2022