

COOPER LIGHTING SOLUTIONS - METALUX®

DESCRIPTION

The Ovation Series is a complete family of recessed direct/indirect luminaires featuring pleasant modern architectural styling, computer-designed optics and the latest energy efficient lamp and ballast technology. The luminaire combines a matte white indirect reflector and a frosted white acrylic lamp shield. All components are located above the ceiling plane for a clean architectural appearance in the finished space. The 2RDI-IC is designed for installations when the housing will be in direct contact with insulation. Carefully balanced design elements combine to provide an efficient and exciting alternative to traditional general lighting. Ovation is an excellent choice for a wide variety of commercial applications.

Catalog #		Type
Project		
Comments		Date
Prepared by		

SPECIFICATION FEATURES

Construction

Nominal 6" deep housing is die formed of code gauge, prime cold rolled steel. Heavy gauge end plates are securely attached with screws for strength and rigidity and the elimination of gaps. Four auxiliary fixture end suspension points are provided. KO's for continuous row wiring. Large access plate for supply connection.

Electrical*

Ballasts are CBM/ETL Class "P" and are positively secured. Biax models use 2G11 base lampholders with double edge wiping action pressure lock contacts and vertically oriented lamp support clips. UL/CUL listed for Type IC Recessed Luminaire (Rated for direct contact with insulation). Suitable for damp locations.

Ballast Access

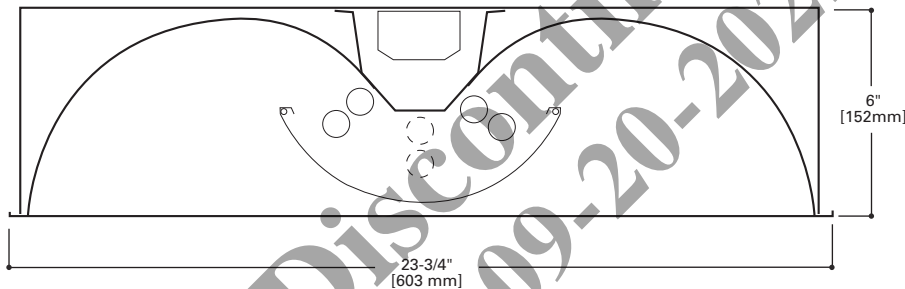
Ballast can be removed from below without tools or from above using the unique ballast mounting/access plate.

Finish

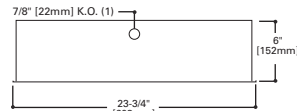
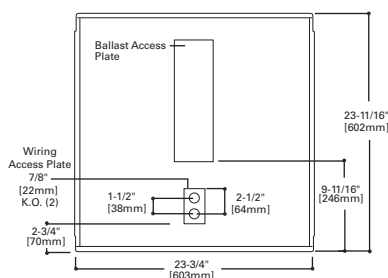
Durable cold rolled steel with multistage, iron phosphate pretreatment and white enamel finish to ensure maximum bonding and rust inhibition.

Reflectors

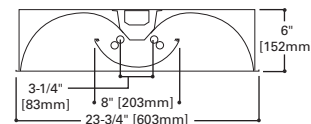
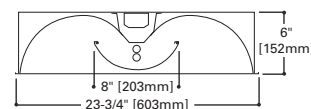
Indirect reflector has high reflectance baked matte white enamel finish for luminous uni- formity. Positively retained direct lamp shields are constructed of frosted white acrylic with linear refractors.



MOUNTING DATA

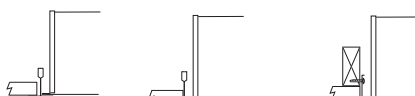


LAMP CONFIGURATIONS



CEILING COMPATIBILITY

G	T	F	Ceiling Type**	Trim Type
Grid/Lay-in Standard	Slot Grid	Drywall Frame Kit	Exposed Grid	G
			Concealed T	G or T
			Slot Grid	G or T
			Flange	***



2RDI-IC 1BX40 2BX40

BIAXIAL LAMPS

2' X 2' Recessed
Direct/Indirect
Center-Mount
Frosted Acrylic Basket
For Use in
Insulated Ceilings.

Ovation™



ENERGY DATA

Input Watts:

EB Ballast & STD Lamps
1BX40 (43), 2BX40 (67),
1BX50 (54), 1BX55 (59),

STD Ballast & STD Lamps
1BX40 (46), 2BX40 (82)

Luminaire Efficacy Rating

LER = FL54

Catalog Number: 2RDI-IC-2BX40FLS

**Yearly Cost of 1000 lumens,
3000 hrs at .08 KWH = \$4.47**

*Reference the lamp/ballast data in the
Technical Section for specific lamp/ballast
requirements.

**Consult Pre Sales Technical Support.

***See Drywall Frame Kit Accessory

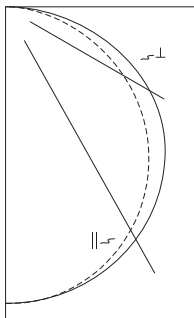
LAMPS CONTAIN MERCURY. DISPOSE ACCORDING TO LOCAL,
STATE OR FEDERAL LAWS

LINEAR DISCONNECT

Safe and convenient means of
disconnecting power.



PHOTOMETRICS


2RDI-IC-2BX40FLS
 Electronic Ballast

(2) 40W
 F40BX/SPX35/RS
 Lamps
 3150 Lumens

Spacing criterion:
 (II) 1.3 x mounting
 height, (⊥) 1.3 x
 mounting height
 Efficiency 74.6%

Test Report:
 2RDIC2BX40FLS.IES

LER = FL54

Yearly Cost of 1000
 lumens, 3000 hrs at
 .08 KWH = \$4.47

Coefficients of Utilization

Effective floor cavity reflectance										20%											
rc	80%				70%				50%				30%				10%				0%
rw	70	50	30	10	70	50	30	10	50	30	10	50	30	10	50	30	10	0			
RCR																					
0	89	89	89	89	87	87	87	87	83	83	83	79	79	79	76	76	76	75			
1	81	77	73	70	78	75	72	69	72	69	67	69	67	65	66	64	63	61			
2	73	66	61	56	71	65	60	56	62	58	54	60	56	53	57	54	52	50			
3	66	58	51	46	64	57	51	46	54	49	45	52	48	44	50	47	43	42			
4	60	51	44	39	59	50	44	39	48	42	38	46	41	38	45	40	37	35			
5	55	45	38	33	54	45	38	33	43	37	33	41	36	32	40	36	32	30			
6	51	41	34	29	50	40	33	29	39	33	28	37	32	28	36	32	28	26			
7	47	37	30	25	46	36	30	25	35	29	25	34	29	25	33	28	25	23			
8	44	34	27	23	43	33	27	22	32	26	22	31	26	22	30	26	22	21			
9	41	31	24	20	40	30	24	20	29	24	20	29	24	20	28	23	20	18			
10	38	28	22	18	37	28	22	18	27	22	18	26	22	18	26	21	18	17			

Zonal Lumen Summary

Zone	Lumens	%Lamp	%Fixture
0-30	1169	18.6	24.9
0-40	1938	30.8	41.2
0-60	3539	56.2	75.3
0-90	4702	74.6	100.0
0-180	4702	74.6	100.0

Typical VCP Percentages

Room Size (Ft.)	Height Along		Height Across	
	8.5'	10.0'	8.5'	10.0'
20 x 20	44	52	39	48
30 x 30	37	41	33	37
30 x 60	32	35	26	29
60 x 30	39	43	37	41
60 x 60	33	35	29	30

Candela

Angle	Along II	45°	Across ⊥
0	1478	1478	1478
5	1476	1476	1474
10	1459	1461	1462
15	1428	1435	1440
20	1386	1397	1409
25	1331	1350	1369
30	1265	1293	1321
35	1189	1226	1263
40	1103	1151	1196
45	1008	1067	1119
50	905	976	1034
55	793	874	938
60	674	765	828
65	550	647	702
70	425	521	563
75	303	387	421
80	188	257	280
85	90	131	142
90	15	16	15

ORDERING INFORMATION

SAMPLE NUMBER: 2RDI-IC-2BX40FLS-120V-EB51-U

Width 2=2" Width	Series RDI=Ovation Series (Recessed Direct/Indirect)	Type IC=IC Rated	Trim Type Blank=Grid/Lay-in (Standard)	Lamp Position Blank=Center Mounted Lamps (standard)	Number of Lamps⁽¹⁾ 1=1 Lamp 2=2 Lamp	Wattage BX40=40W Biax (24") BX50=50W Biax (24") ⁽¹⁾ BX55=55W Biax (24") ⁽¹⁾	Lamp Shield FLS=Frosted Lamp Shield	Voltage⁽²⁾ 120V=120 Volt 277V=277 Volt 347V=347 Volt UNV=Universal Voltage 120-277	Options Lamps=Lamps Installed GL=Single Element Fuse GM=Double Element Fuse Flex=Flex Installed EL=Emergency Installed	Ballast Type EB5_=T5 Biax Electronic Instant ⁽⁴⁾ Start. Total Harmonic Distortion < 20% TEB5_=T5 Biax Electronic Instant ⁽⁴⁾ Start. Total Harmonic Distortion < 10% ER5_=T5 Biax Electronic Program Rapid Start. Total Harmonic Distortion < 10% Fifthlight Ballasts⁽⁵⁾ 5LT5B_=T5 Biax DALI Program Rapid Start. Total Harmonic Distortion < 10%. Ballast Factor 1.0	Number of Ballasts 1=1 Ballast 2=2 Ballasts 3=3 Ballasts	Options RIF1=Radio Interference Suppressor REP=Riveted Endplates, for use in New York City. ST=Semi-Specular Tannenbaum Main Reflector	Packaging U=Unit Pack PALC=Job Pack, in carton
----------------------------	---	----------------------------	--	---	--	---	---	--	--	--	--	--	---

ACCESSORIES

EQ-CLIP-U=T-BAR Safety Earthquake Clips⁽³⁾
 DF-22-W=Drywall Frame Kit

NOTES: ⁽¹⁾ 50w or 55w Biax only available in a 1-lamp option. ⁽²⁾ Products also available in non-US voltages and frequencies for international markets. ⁽³⁾ An EQ Grid Clip is recommended for all 9/16" ceiling systems. Four required per fixture. ⁽⁴⁾ Not available in UNV voltages. Must specify voltage. ⁽⁵⁾ For a complete listing of Fifthlight Technology products and other solutions from Cooper Lighting Solutions, visit www.cooperlighting.com

For complete product data, reference the Fluorescent Specification binder. Specifications & dimensions subject to change without notice. Consult your Cooper Lighting Solutions Representative for availability and ordering information.

SHIPPING INFORMATION

Catalog No.	Wt.
2RDI-IC-1BX40FLS	19 lbs.
2RDI-IC-2BX40FLS	19 lbs.
2RDI-IC-3BX40FLS	19 lbs.