

COOPER LIGHTING SOLUTIONS - METALUX®

DESCRIPTION

The Ovation Series is a complete family of recessed direct/indirect luminaires featuring pleasant modern architectural styling, computer-designed optics and the latest energy efficient lamp and ballast technology. The luminaire combines a matte white indirect reflector and frosted white acrylic lamp shield. All components are located above the ceiling plane for a clean architectural appearance in the finished space. The 2RDI-IC is designed for installations when the housing will be in direct contact with insulation. Carefully balanced design elements combine to provide an efficient and exciting, high performance alternative to traditional general lighting. Ovation is an excellent choice for a wide variety of commercial applications.

Catalog #		Type
Project		
Comments		Date
Prepared by		

SPECIFICATION FEATURES

Construction

Nominal 6" deep housing is die formed of code gauge, prime cold rolled steel. Heavy gauge end plates are securely attached with screws for strength and rigidity and the elimination of gaps. Four auxiliary fixture end suspension points are provided. KOs for continuous row wiring. Large access plate for supply connection.

Electrical*

Ballasts are Class "P" and are positively secured. Rotor-lock lampholders ensure positive lamp retention. UL/CUL listed for Type IC Recessed Luminaire (Rated for direct contact with insulation). Suitable for damp locations.

Ballast Access

Ballast can be removed from below without tools.

Finish

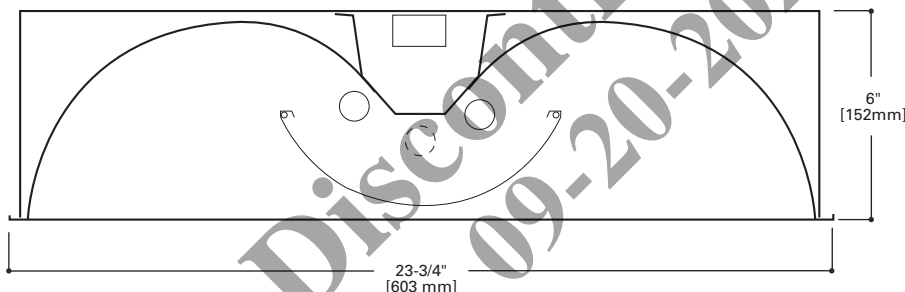
Durable cold rolled steel with multistage, and white enamel finish to ensure maximum bonding and rust inhibition.

Reflectors

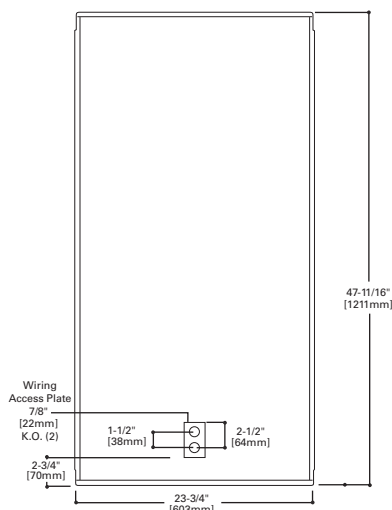
Indirect reflector has high reflectance baked matte white enamel finish for luminous uniformity. Positively retained direct lamp shields are constructed of frosted white acrylic with linear refractors.

Controls

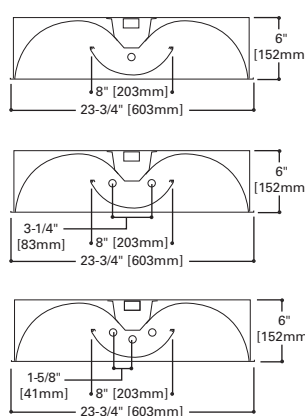
Fifth Light ballast options are offered for both 0-10V continuous dimming and DALI applications. Combine with energysaving products like occupancy sensors, day-lighting controls, and lighting relay panels from Cooper Lighting Solutions (www.cooperlighting.com) to maximize energy savings.



MOUNTING DATA



LAMP CONFIGURATIONS



CEILING COMPATIBILITY

G	T	F	Ceiling Type**	Trim Type
Grid/Lay-in Standard	Slot Grid	Drywall Frame Kit	Exposed Grid	G
			Concealed T	G or T
			Slot Grid	G or T
			Flange	***



2RDI-IC
128T5, 228T5
328T5
154T5HO
254T5HO
354T5HO

T5 OR T5HO LAMPS

2' X 4' Recessed
Direct/Indirect
Center-Mount
Frosted Acrylic Basket
For Use in
Insulated Ceilings.

Ovation
T5

powered by
fifthlight
technology

ENERGY DATA

Input Watts:

EB Ballast & STD Lamps

128T5 (34), 228T5 (68), 328T5 (102)
154T5 (54), 254T5 (106), 354T5 (160)

Luminaire Efficacy Rating

LER = FL75

Catalog Number: 2RDI-IC-228T5FLS

Yearly Cost of 1000 lumens,
3000 hrs at .08 KWH = \$3.21

*Reference the lamp/ballast data in the
Technical Section for specific lamp/ballast
requirements.

**Consult Pre Sales Technical Support.

***See Drywall Frame Kit Accessory

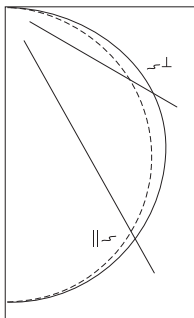
LAMPS CONTAIN MERCURY. DISPOSE ACCORDING TO
LOCAL, STATE OR FEDERAL LAWS

LINEAR DISCONNECT

Safe and convenient means of
disconnecting power.



PHOTOMETRICS

**2RDI-IC-228T5FLS**

Electronic Ballast

F28T5/835 28W Lamps

2600 Lumens

Spacing criterion:
(II) 1.3 x mounting
height, (⊥) 1.3 x
mounting height

Efficiency 86.8%

Test Report:

2RDIIC228FLS.IES

LER = FL75

Yearly Cost of 1000
lumens, 3000 hrs at
.08 KWH = \$3.21

Coefficients of Utilization

Effective floor cavity reflectance										20%								
rc	80%				70%				50%			30%			10%			0%
rw	70	50	30	10	70	50	30	10	50	30	10	50	30	10	50	30	10	0
RCR																		
0	103	103	103	103	101	101	101	101	96	96	96	92	92	92	89	89	89	87
1	93	89	85	81	91	87	83	80	83	80	77	80	77	75	77	75	73	71
2	84	77	70	65	82	75	69	64	72	67	63	69	65	61	66	63	60	58
3	77	67	59	53	74	65	59	53	63	57	52	60	55	51	58	54	50	48
4	70	59	51	45	68	58	50	44	56	49	44	53	48	43	52	47	43	41
5	64	52	44	38	62	51	44	38	50	43	38	48	42	37	46	41	37	35
6	59	47	39	33	57	46	39	33	45	38	33	43	37	32	42	36	32	30
7	55	43	35	29	53	42	34	29	40	34	29	39	33	29	38	33	28	27
8	51	39	31	26	49	38	31	26	37	30	26	36	30	25	35	29	25	24
9	47	35	28	23	46	35	28	23	34	28	23	33	27	23	32	27	23	21
10	44	33	26	21	43	32	25	21	31	25	21	31	25	21	30	24	21	19

Zonal Lumen Summary

Zone	Lumens	%Lamp	%Fixture
0-30	1103	21.2	24.4
0-40	1828	35.2	40.5
0-60	3357	64.6	74.4
0-90	4511	86.8	100.0
0-180	4511	86.8	100.0

Typical VCP Percentages

Room Size (Ft.)	Height Along		Height Across	
	8.5'	10.0'	8.5'	10.0'
20 x 20	60	68	57	65
30 x 30	54	59	51	55
30 x 60	48	51	44	47
60 x 30	56	60	54	58
60 x 60	49	51	46	48

Candela

Angle	Along II	45°	Across ⊥
0	1394	1394	1394
5	1387	1390	1392
10	1372	1377	1380
15	1345	1352	1359
20	1306	1318	1328
25	1258	1273	1288
30	1198	1220	1240
35	1130	1157	1185
40	1053	1087	1123
45	966	1011	1054
50	872	927	979
55	771	837	892
60	662	740	793
65	546	635	679
70	426	520	551
75	305	394	412
80	190	261	270
85	87	131	135
90	6	11	10

ORDERING INFORMATION

SAMPLE NUMBER: 2RDI-IC-228T5FLS-120V-EBT1-U

Width 2= 2' Width	Number of Lamps 1=1 Lamp 2=2 Lamps 3=3 Lamps	Lamp Shield FLS=Frosted Lamp Shield	Ballast Type EBT__=T5 or T5HO Electronic Program Rapid Start. Total Harmonic Distortion < 10%. Standard Ballast Factor=1.0 <u>Ballast/FactorType</u> EBT__N=T5 Electronic Program Rapid Start. Total Harmonic Distortion < 10%. Normal Ballast Factor=.90 ⁽⁴⁾ EBT__H=T5 Electronic Program Rapid Start. Total Harmonic Distortion < 10%. High Ballast Factor=1.15 ⁽⁴⁾ EBT__NDIM=T5 Electronic Program Rapid Start. Total Harmonic Distortion < 10%. Step Dimming, Normal Ballast Factor=.95-1.0 ⁽⁵⁾ EBT__HDIM=T5 Electronic Program Rapid Start. Total Harmonic Distortion < 10%. Step Dimming, High Ballast Factor=1.15 0-10V Dimming Ballasts ⁽⁸⁾ 5LTV5__=T5 0-10V Program Rapid Start. Total Harmonic Distortion < 10%. Ballast Factor 1.0 ⁽¹¹⁾ 5LTVS5__=T5 0-10V Spec Grade Program Rapid Start. Total Harmonic Distortion < 10%. Ballast Factor 1.0 ^{(9), (10)} 5LTV5H__=T5HO 0-10V Program Rapid Start. Total Harmonic Distortion < 10%. Ballast Factor 1.0 ⁽¹¹⁾ 5LTVS5H__=T5HO 0-10V Spec Grade Program Rapid Start. Total Harmonic Distortion < 10%. Ballast Factor 1.0 ^{(9), (10)} Fifth Light DALI Ballasts ⁽⁷⁾ 5LT5__=T5 DALI Program Rapid Start. Total Harmonic Distortion < 10%. Ballast Factor 1.0 5LT5H__=T5HO DALI Program Rapid Start. Total Harmonic Distortion < 10%. Ballast Factor 1.0	Options RIF1=Radio Interference Suppressor REP=Riveted End Plates ST=Semi-Specular Tannenbaum
Series RDI=Ovation Series (Recessed Direct/Indirect)	Wattage 28T5=28WT5 (48") ⁽¹⁾ 54T5=54WT5HO (48") ⁽¹⁾	Voltage ⁽²⁾ 120V=120 Volt 277V=277 Volt 347V=347 Volt UNV=Universal Voltage 120-277	Packaging U=Unit Pack PALC=Job Pack, in Carton	
Type IC= IC Rated	Trim Type Blank=Grid/Lay-in (Standard)	Options GL=Single Element Fuse GM=Double Element Fuse Lamps=Lamps installed Flex=Flex Installed EL=Emergency Installed	ACCESSORIES EQ-CLIP-U=T-BAR Safety Earthquake Clips ⁽⁹⁾ DF-24-W=Drywall Frame Kit	
Lamp Position Blank=Center Mounted Lamps (Standard)				

NOTES: ⁽¹⁾ 2' x 2' and 2' x 4' Center Lamp Shield models only. ⁽²⁾ Products also available in non-US voltages and frequencies for international markets. ⁽³⁾ An EQ Grid Clip is recommended for all 9/16" ceiling systems. Four required per fixture. ⁽⁴⁾ .90 ballast factor available for 2 or 3 14WT5 or 28WT5 lamps only. ⁽⁵⁾ 1-Lamp step dimming ballast in a Normal Ballast factor not available. 2-Lamp ballast will not operate 1-Lamp. ⁽⁶⁾ 1-Lamp ballast in a High Ballast factor not available. ⁽⁷⁾ For a complete listing of FifthlightTechnology products and other solutions from Cooper Lighting Solutions, visit www.cooperlighting.com. ⁽⁸⁾ 0-10V ballast do not include DALI feature. Please select DALI ballast for use with Fifth Light system. ⁽⁹⁾ Specification grade 0-10V dimming ballast are NEMA premium and CEE listed. They are compatible with low mercury and energy saving lamps. ⁽¹⁰⁾ Specification Grade 0-10V ballast not offered in 3 or 4-lamp versions. ⁽¹¹⁾ Standard 0-10V ballast not offered in 3 or 4-lamp versions.

For complete product data, reference the Fluorescent Specification binder. Specifications & dimensions subject to change without notice. Consult your Cooper Lighting Solutions Representative for availability and ordering information.

SHIPPING INFORMATION

Catalog No.	Wt.
2RDI-IC-128T5FLS	28 lbs.
2RDI-IC-228T5FLS	28 lbs.
2RDI-IC-328T5FLS	28 lbs.
2RDI-IC-154T5FLS	28 lbs.
2RDI-IC-254T5FLS	28 lbs.
2RDI-IC-354T5FLS	28 lbs.