

COOPER LIGHTING SOLUTIONS - METALUX®

DESCRIPTION

The Ovation Series is a complete family of recessed direct/indirect luminaires featuring pleasant modern architectural styling, computer-designed optics and the latest energy efficient lamp and ballast technology. The luminaire combines a matte white indirect reflector and a frosted white acrylic lamp shield. All components are located above the ceiling plane for a clean architectural appearance in the finished space. Carefully balanced design elements combine to provide an efficient and exciting alternative to traditional general lighting. Ovation is an excellent choice for a wide variety of commercial applications.

Catalog #		Type
Project		
Comments		Date
Prepared by		

SPECIFICATION FEATURES

Construction

Nominal 6" deep housing is die formed of code gauge, prime cold rolled steel. Heavy gauge end plates are securely attached with screws for strength and rigidity and the elimination of gaps. Four auxiliary fixture end suspension points are provided. KOs for continuous row wiring. Large access plate for supply connection.

Electrical*

Ballasts are CBM/ETL Class "P" and are positively secured. Biax models use 2G11 base lampholders with double edge wiping action pressure lock contacts and vertically oriented lamp support clips. UL/CUL listed. Suitable for damp locations.

Ballast Access

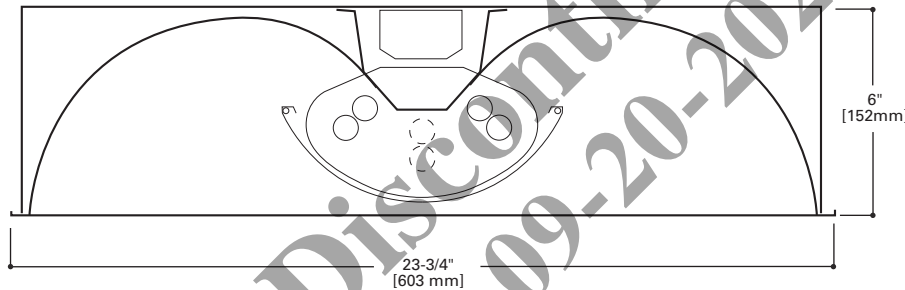
Ballast can be removed from below without tools or from above using the unique ballast mounting/access plate.

Finish

Durable cold rolled steel with multistage, iron phosphate pretreatment and white enamel finish to ensure maximum bonding and rust inhibition

Reflectors

Indirect reflector has high reflectance baked matte white enamel finish for luminous uniformity. Positively retained direct lamp shield constructed of frosted white acrylic with linear refractors.



2RDI
T1BX40
T2BX40
T3BX40

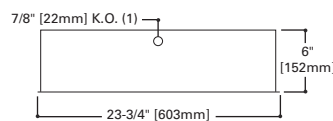
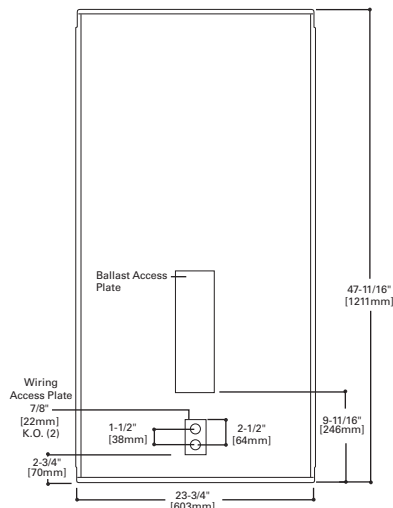
BIAXIAL LAMPS

2' X 4' Recessed
Direct/Indirect
Center-Mount
Frosted Acrylic Basket

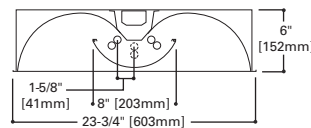
Ovation™

powered by
fifthlight
technology

MOUNTING DATA



LAMP CONFIGURATIONS



ENERGY DATA

Input Watts:

EB Ballast & STD Lamps
T1BX40 (70), T2BX40 (140)
T3BX40 (210)
T1BX50 (106), T2BX50 (212)
T3BX50 (318)
T1BX55 (110), T2BX55 (220)
T3BX55 (330)

STD Ballast & STD Lamps
T1BX40 (82), T2BX40 (164)
T3BX40 (246)

Luminaire Efficacy Rating
LER = FL82

Catalog Number: 2RDI-
Yearly Cost of 1000 lumens,
3000 hrs at .08 KWH = \$2.92

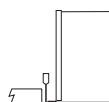
*Reference the lamp/ballast data in the Technical Section for specific lamp/ballast requirements.

**Consult Pre Sales Technical Support.

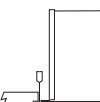
***See Drywall Frame Kit Accessory

CEILING COMPATIBILITY

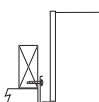
G
Grid/Lay-in
Standard



T
Slot Grid



F
Dry Wall Frame
Kit



**Ceiling
Type**
Exposed Grid
Concealed T
Slot Grid
Flange

**Trim
Type**
G
G or T
G or T

**LAMPS CONTAIN MERCURY. DISPOSE ACCORDING TO LOCAL,
STATE OR FEDERAL LAWS**

LINEAR DISCONNECT

Safe and convenient means of
disconnecting power.



ORDERING INFORMATION

SAMPLE NUMBER: 2RDI-T3BX40FLS-UNV-EB51-U

Width
2= 2' Width**Series**
RDI=Ovation Series
(Recessed
Direct/Indirect)**Trim Type**
Blank=Grid/Lay-in
(Standard)**Lamp Position**
Blank=Center Mounted
Lamps (Standard)**Number of Lamps**
T1=2'x4' Fixture
with One
Biax Lamp at
Each End
T2=2 Tandem
Lamps (Biax)
T3=3 Tandem
Lamps (Biax)**Wattage**
BX40=40W Biax (24")
BX50=50W Biax (24")⁽¹⁾
BX55=55W Biax (24")⁽¹⁾**Lamp Shield**
FLS=Frosted Lamp
Shield**Voltage**⁽²⁾
120V=120 Volt
277V=277 Volt
347V=347 Volt
UNV=Universal Voltage
120-277**Options**
GL=Single Element Fuse
GM=Double Element Fuse
Lamps=Lamps installed
Flex=Flex installed
EL=Emergency Installed**Ballast Type**
EB5_=T5 Biax Electronic Instant ⁽⁴⁾
Start. Total Harmonic
Distortion < 20%
TEB5_=T5 Biax Electronic Instant ⁽⁴⁾
Start. Total Harmonic
Distortion < 10%
ER5_=T5 Biax Electronic Program
Rapid Start. Total Harmonic
Distortion < 10%
Fifthlight Ballasts ⁽⁵⁾
5LT5B_=T5 Biax DALI Program
Rapid Start. Total Harmonic
Distortion < 10%.
Ballast Factor 1.0**Number of Ballasts**
1=1 Ballast
2=2 Ballasts
3=3 Ballasts**Options**
RIF1=Radio Interference
Suppressor**Packaging**
U=Unit Pack
PALC=Palletize
d Fixtures in
Carton

ACCESSORIES

EQ-CLIP-U=T-BAR Safety
Earthquake Clips⁽³⁾
DF-24-W=Drywall Frame Kit

NOTES: ⁽¹⁾ 2' x 2' and 2' x 4' Center Lamp Shield models only. ⁽²⁾ Products also available in non-US voltages and frequencies for international markets. ⁽³⁾ An EQ Grid Clip is recommended for all 9/16" ceiling systems. Four required per fixture. ⁽⁴⁾ Not available in UNV voltages. Must specify voltage. ⁽⁵⁾ For a complete listing of Fifthlight Technology products and other solutions from Cooper Lighting Solutions, visit www.cooperlighting.com

For complete product data, reference the Fluorescent Specification binder. Specifications & dimensions subject to change without notice. Consult your Cooper Lighting Solutions Representative for availability and ordering information.

Discontinued
09-20-2021

SHIPPING INFORMATION

Catalog No.	Wt.
2RDI-T1BX40FLS	31 lbs.
2RDI-T2BX40FLS	31 lbs.
2RDI-T3BX40FLS	31 lbs.