

COOPER LIGHTING SOLUTIONS - METALUX®

DESCRIPTION

The Ovation Series is a complete family of recessed direct/indirect luminaires featuring pleasant modern architectural styling, computer-designed optics and the latest energy efficient lamp and ballast technology. The luminaire combines a matte white indirect reflector and a perforated direct lamp shield to provide optimum brightness control. All components are located above the ceiling plane for a clean architectural appearance in the finished space. Carefully balanced design elements combine to provide an efficient and exciting, high performance alternative to traditional general lighting. Ovation is an excellent choice for a wide variety of commercial applications.

Catalog #		Type
Project		
Comments		Date
Prepared by		

SPECIFICATION FEATURES

Construction

Nominal 6" deep housing is die formed of code gauge, prime cold rolled steel. Heavy gauge end plates are securely attached with screws for strength and rigidity and the elimination of gaps. Four auxiliary fixture end suspension points are provided. KO's for continuous row wiring. Large access plate for supply connection.

Electrical*

Ballasts are CBM/ETL Class "P" and are positively secured. BiAx models use 2G11 base lampholders with double edge wiping action pressure lock contacts and vertically oriented lamp support clips. T8 models use rotor-lock lampholders for positive lamp retention. UL/CUL listed. Suitable for damp locations.

Ballast Access

Ballast can be removed from below without tools or from above using the unique ballast mounting/access plate.³

Finish

Durable cold rolled steel with multistage, iron phosphate pretreatment and white enamel finish to ensure maximum bonding and rust inhibition.

Reflectors

Indirect reflector has high reflectance baked matte white enamel finish for luminous uniformity. A positively retained direct lamp shield is constructed of heavy gauge perforated steel with high reflectance matte white painted after fabrication finish and milky white overlay diffuser for visual comfort. All reflectors are precision formed in a computer-controlled operation.

Controls

Fifth Light ballast options are offered for both 0-10V continuous dimming and DALI applications. Combine with energy saving products like occupancy sensors, day-lighting controls, and lighting relay panels from Cooper Lighting Solutions (www.cooperlighting.com) to maximize energy savings.



RDI
2BX40
217

BIAXIAL OR T8 LAMPS

1' X 2' Recessed
Direct/Indirect
Center-Mount

Ovation™

powered by
fifthlight
technology

ENERGY DATA

Input Watts:

EB Ballast & STD Lamps
2BX40 (67), 2BX50 (106),
2BX55 (117), 217 (34)

ES Ballast & STD Lamps
217 (45)

STD Ballast & STD Lamps
2BX40 (82)

Luminaire Efficacy Rating

LER = FD48

Catalog Number: RDI-2BX40RP

Yearly Cost of 1000 lumens,
3000 hrs at .08 KWH = \$5.00

*Reference the lamp/ballast data in the
Technical Section for specific lamp/ballast
requirements.

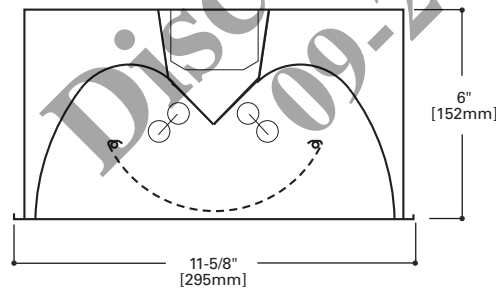
**LAMPS CONTAIN MERCURY. DISPOSE ACCORDING TO
LOCAL, STATE OR FEDERAL LAWS**

LINEAR DISCONNECT

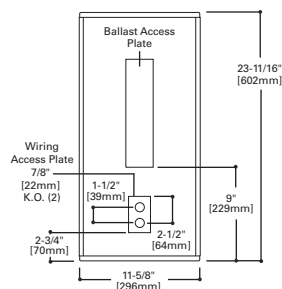
Safe and convenient means of
disconnecting power.



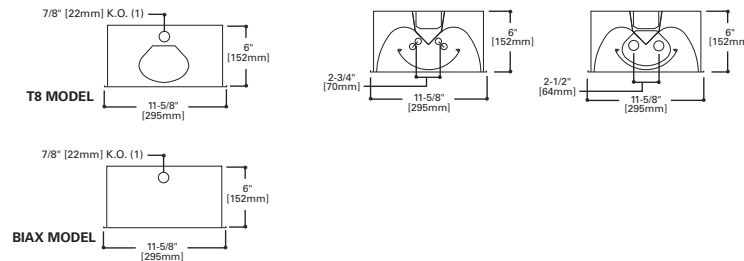
ADF020486



MOUNTING DATA



LAMP CONFIGURATIONS



CEILING COMPATIBILITY

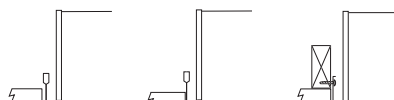
G
Grid/Lay-in
Standard

T
Slot Grid

F
Drywall
Frame Kit

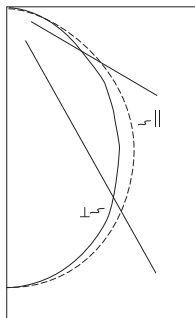
**Ceiling
Type****
Exposed Grid
Concealed T
Slot Grid
Flange

**Trim
Type**
G
G or T
G or T



COOPER LIGHTING SOLUTIONS

PHOTOMETRICS



RDI-2BX40RP
Electronic Ballast
F40BX/35K/RS Lamps
3150 Lumens

Spacing criterion:
(||) 1.2 x mounting
height, (⊥) 1.2 x
mounting height

Efficiency 57.1%

Test Report:
RDISYM2BX40RP.IES

LER = FD48

Yearly Cost of 1000
lumens, 3000 hrs at
.08 KWH = \$5.00

Coefficients of Utilization

Effective floor cavity reflectance										20%									
rc	80%				70%				50%			30%			10%			0%	
rw	70	50	30	10	70	50	30	10	50	30	10	50	30	10	50	30	10	0	
RCR																			
0	68	68	68	68	66	66	66	66	63	63	63	61	61	61	58	58	58	57	
1	63	61	58	57	61	59	57	56	57	55	54	55	53	52	53	52	51	50	
2	58	54	50	47	57	53	50	47	51	48	46	49	47	45	47	45	44	43	
3	53	48	44	40	52	47	43	40	45	42	39	44	41	39	43	40	38	37	
4	49	43	38	35	48	42	38	35	41	37	34	39	36	34	38	35	33	32	
5	45	38	33	30	44	38	33	30	36	32	29	35	32	29	34	31	29	28	
6	42	34	29	26	41	34	29	26	33	29	26	32	28	25	31	28	25	24	
7	38	31	26	23	37	30	26	23	30	25	22	29	25	22	28	25	22	21	
8	35	28	23	20	35	27	23	20	27	23	20	26	22	19	25	22	19	18	
9	33	25	20	17	32	25	20	17	24	20	17	23	20	17	23	19	17	16	
10	30	23	18	15	30	22	18	15	22	18	15	21	18	15	21	17	15	14	

Zonal Lumen Summary

Zone	Lumens	%Lamp	%Fixture
0-30	1110	17.6	30.8
0-40	1781	28.3	49.5
0-60	2984	47.4	82.9
0-90	3600	57.1	100.0
0-180	3600	57.1	100.0

Typical VCP Percentages

Room Size (Ft.)	Height Along		Height Across	
	8.5'	10.0'	8.5'	10.0'
20 x 20	37	42	39	44
30 x 30	35	36	35	37
30 x 60	33	33	32	33
60 x 30	39	40	40	41
60 x 60	36	35	35	35

Candela

Angle	Along	45°	Across ⊥
0	1461	1461	1461
5	1461	1456	1454
10	1440	1433	1428
15	1404	1392	1380
20	1353	1332	1307
25	1291	1256	1225
30	1216	1165	1134
35	1127	1063	1031
40	1030	955	913
45	926	841	793
50	812	713	691
55	691	585	582
60	564	475	473
65	435	368	368
70	309	267	270
75	195	177	181
80	101	100	102
85	35	40	41
90	0	0	0

ORDERING INFORMATION

SAMPLE NUMBER: RDI-2BX40RP-120V-EB51-U

<p>Width Leave Blank=1' Width</p> <p>Series RDI=Ovation Series (Recessed Direct/Indirect)</p> <p>Trim Type Leave Blank=Grid/Lay-in (Standard)</p> <p>Lamp Position Leave Blank=Center Mounted Lamps (Standard)</p>	<p>Number of Lamps 2=2 Lamps</p> <p>Wattage 17=17WT8 (24") BX40=40W Biax (24") BX50=50W Biax (24")⁽¹⁾ BX55=55W Biax (24")⁽¹⁾</p>	<p>Lamp Shield X=Solid Matte White RP=Round Perforated White Steel</p> <p>Voltage⁽²⁾ 120V=120 Volt 277V=277 Volt 347V=347 Volt UNV=Universal Voltage 120-277</p> <p>Options GL=Single Element Fuse GM=Double Element Fuse Lamps=Lamps installed Flex=Flex installed EL=Emergency Installed</p>	<p>Ballast Type Blank=Standard Magnetic Ballast (40W Biax only) EB8_=T8 Electronic Start. Total Harmonic Distortion < 10% EB8_/PLUS= T8 Electronic Start. Total Harmonic Distortion < 10%. High Ballast Factor > 1.15. ER8_=T8 Electronic Program Rapid Start. Total Harmonic Distortion < 10% EB5_=T5 Biax Electronic Instant Start Total Harmonic Distortion < 20% ⁽⁴⁾ TEB5_=T5 Biax Electronic Instant Start Total Harmonic Distortion < 10% ⁽⁴⁾ ER5_=T5 Biax Electronic Program Rapid Start. Total Harmonic Distortion < 10%</p> <p>High Performance T8 Ballasts HB8_=T8 Electronic Instant Start. Total Harmonic Distortion < 10%. Standard Ballast Factor .86 – .88 HB8_L=T8 Electronic Instant Start. Total Harmonic Distortion < 10%. Low Ballast Factor .77 – .82 HB8_N=T8 Electronic Instant Start. Total Harmonic Distortion < 10%. Normal Ballast Factor 1.0 HB8_H=T8 Electronic Instant Start. Total Harmonic Distortion < 10%. High Ballast Factor 1.15 – 1.20 HR8_T8=T8 Electronic Program Rapid Start. Total Harmonic Distortion < 10%. Standard Ballast Factor .86 – .88 HR8_DIM=T8 Electronic Program Rapid Start. Total Harmonic Distortion < 10%. Step Dimming, Ballast Factor .88 HR8_L=T8 Electronic Program Rapid Start. Total Harmonic Distortion < 10%. Low Ballast Factor .71 – .79 HR8_H=T8 Electronic Program Rapid Start. Total Harmonic Distortion < 10%. High Ballast Factor 1.15 – 1.20</p> <p>0-10V Dimming Ballasts ⁽⁶⁾ 5LTV8_T8=0-10V Program Rapid Start. Total Harmonic Distortion < 10%. Ballast Factor 0.87 ⁽⁹⁾ 5LTVS8_T8=0-10V Spec Grade Program Rapid Start. Total Harmonic Distortion < 10%. Ballast Factor 0.87 ^{(7), (8)}</p> <p>Fifth Light DALI Ballasts ⁽⁵⁾ 5LT8_=T8 DALI Program Rapid Start. Total Harmonic Distortion < 10%. Ballast Factor 1.0 5LT5B_=T5 Biax DALI Program Rapid Start. Total Harmonic Distortion < 10%. Ballast Factor 1.0</p>	<p>Options RLS=Rotor-Lock Socket (T8 Lamps Only) RIF1=Radio Interference Suppressor REP=Riveted Endplates LSC=Lamp Shield Cable ST=Semi-Specular Tannenbaum</p> <p>Packaging U=Unit Pack PALC=Job Pack, in carton</p>
<p>NOTES: ⁽¹⁾ 2' x 2' and 2' x 4' Center Lamp Shield models only. ⁽²⁾ Products also available in non-US volt-ages and frequencies for international markets. ⁽³⁾ An EQ Grid Clip is recommended for all 9/16" ceiling systems. Four required per fixture. ⁽⁴⁾ Not available in UNV voltages. Must specify voltage. ⁽⁵⁾ For a complete listing of Fifthlight Technology products and other solutions from Cooper Lighting Solutions, visit www.cooperlighting.com. ⁽⁶⁾ 0-10V ballast do not include DALI feature. Please select DALI ballast for use with Fifth Light system. ⁽⁷⁾ Specification grade 0-10V dimming ballast are NEMA premium and CEE listed. They are compatible with low mercury and energy saving lamps. ⁽⁸⁾ Specification Grade 0-10V ballast not available for Biax lamps. ⁽⁹⁾ Standard 0-10V ballast not available for Biax lamps.</p> <p>For complete product data, reference the Fluorescent Specification binder. Specifications & dimensions subject to change without notice. Consult your Cooper Lighting Solutions Representative for availability and ordering information.</p>			<p>ACCESSORIES EQ-CLIP-U=T-BAR Safety Earthquake Clips⁽³⁾ DF-12-W=Drywall Frame Kit</p>	
			<p>Number of Ballasts 1=1 Ballast 2=2 Ballasts 3=3 Ballasts</p>	

SHIPPING INFORMATION

Catalog No.	Wt.
RDI-2BX40RP	11 lbs.
RDI-217RP	11 lbs.