

Project		Catalog #		Type	
Prepared by		Notes		Date	



WaveLinx

PRO Contact Closure Input Module (CCI-P-V)

Offers four dry contact inputs for the WaveLinx PRO system

Typical Applications

Office • Education • Healthcare • Hospitality • Retail

Interactive Menu

- Order Information page 2
- Additional Resources page 3
- Wiring Diagrams page 3
- Connected Systems page 4
- Product Warranty



- Meets latest ASHRAE Standard 90.1 requirements
- Meets latest IECC requirements
- Meets latest CEC Title 24 requirements
- Manufactured in an ISO 9001 certified factory

Product Features



Compatibility



Overview

The PRO Contact Closure Interface module provides analog devices with an interface and network addressability. The CCI device offers two modes: the first mode offers four inputs for momentary or sustained contact inputs. In the second mode, the device can work as a sensor interface module providing input to an occupancy sensor. The PRO version of the Contact Closure Interface module communicates with other PRO devices, including the WaveLinx Area Controller using the 802.15.4 PRO protocol. Each input is programmable using WaveLinx mobile app.

Product Features & Benefits

- Four (4) dry contact inputs
- Plenum rated design with easy junction box mounting
- Supports momentary and/or sustained inputs
- Occupancy sensor mode that supports single sensor input
- Remotely configurable through WaveLinx mobile app
- WaveLinx PRO version available to communicate with PRO system.

product diagrams

Order Information

Catalog Number

Catalog Number	Description
CCI-P-V	WaveLinx PRO Contact Closure Input Module
	<p>Notes</p> <p>WaveLinx PRO CCI can only be commissioned with the WaveLinx PRO App when paired to a WAC.</p>

Product Specifications

Key Features

- The device supports 2 modes:
 - Four (4) dry contact input uses
 - Demand Response
 - Alarm
 - External Timeclock
 - Master Switch Input
 - Input to an occupancy sensor
- Programmable by mobile app
- Device identification LED

Mechanical

Size: 2.28" W X 3.34" H X 1.5" D (58mm x 85mm x 38mm)

Weight: 0.33 lbs (0.0 kg)

Environment:

- Operating temperature:** 32°F to 122°F (0°C to 50°C)
- Storage temperature:** 14°F to 158 °F (-10°C to 70°C)
- Relative humidity operating:** 5 to 95% non-condensing
- For indoor use only

Mounting: Junction box mounting

Color: Black

Electrical

Input Types:

- Four (4) dry voltage-free contacts
- Push in connector
- Accepts 24 AWG to 16 AWG

Power:

- 120-347VAC Line to neutral single phase

Network connection:

- WaveLinx PRO - 802.15.4

Standards/Ratings*

- cULus Listed - Energy Management Equipment (UL916)
- UL Listed (UL508)
- FCC Part 15, Part B
- Manufactured in an ISO 9001 certified factory
- Meets latest ASHRAE Standard 90.1 requirements
- Meets latest IEC 2021 requirements
- Meets latest CEC Title 24 requirements

Environmental Regulations:

- RoHS
- Plenum UL2043
- Chicago Plenum rated

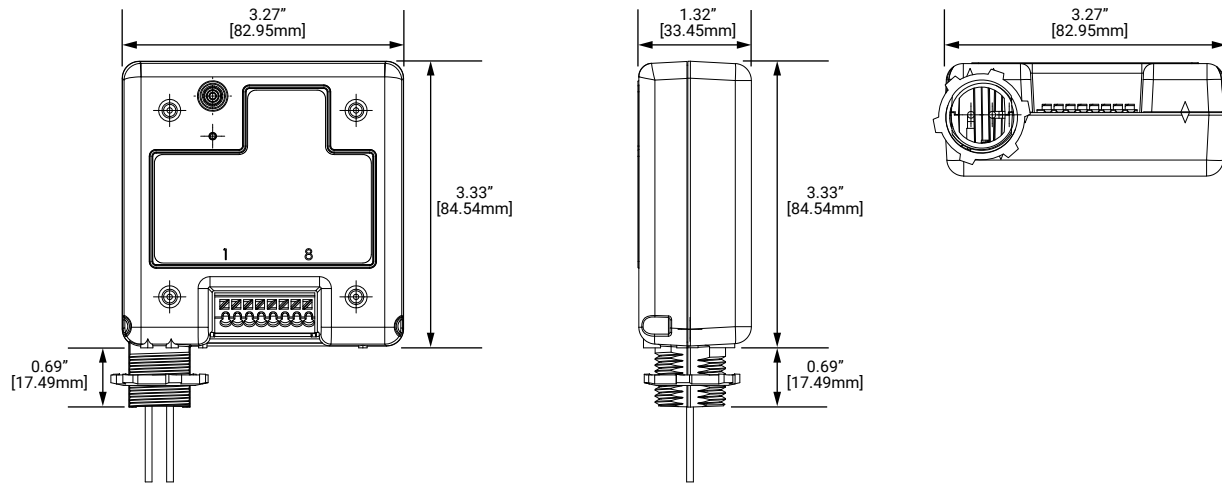
Warranty

Five year warranty standard

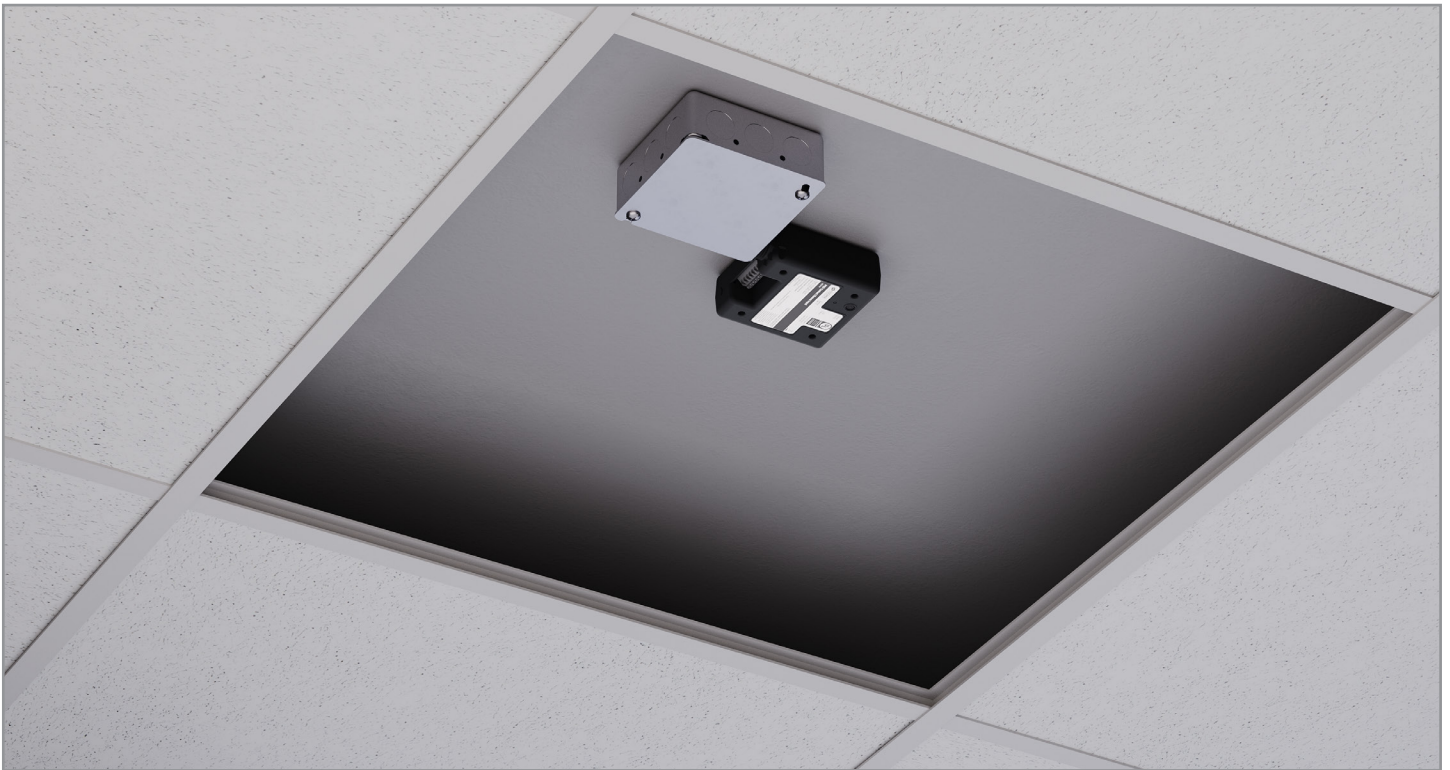


Download the WaveLinx Mobile App from either the Google Play or Apple Store®

Dimensional Details



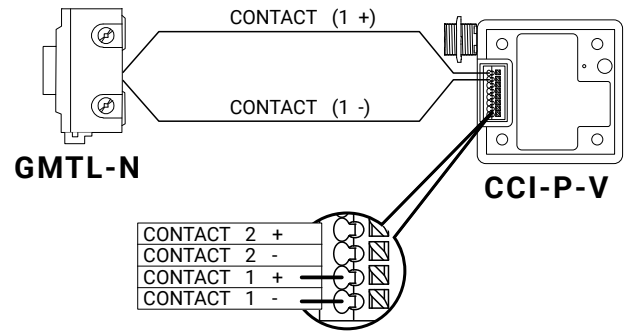
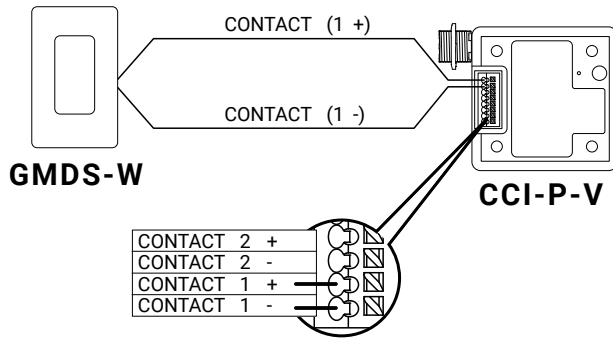
Mounting



Wiring Diagrams

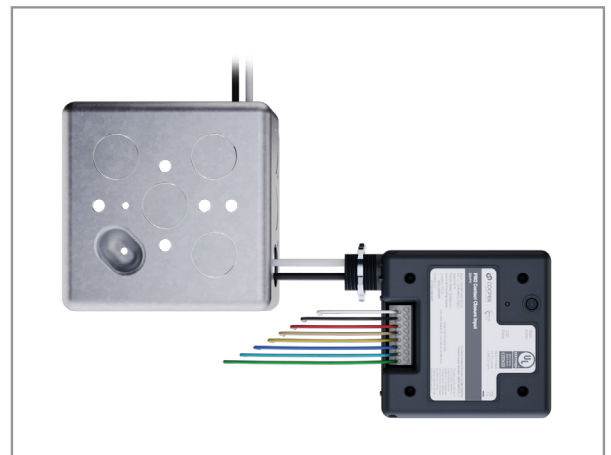
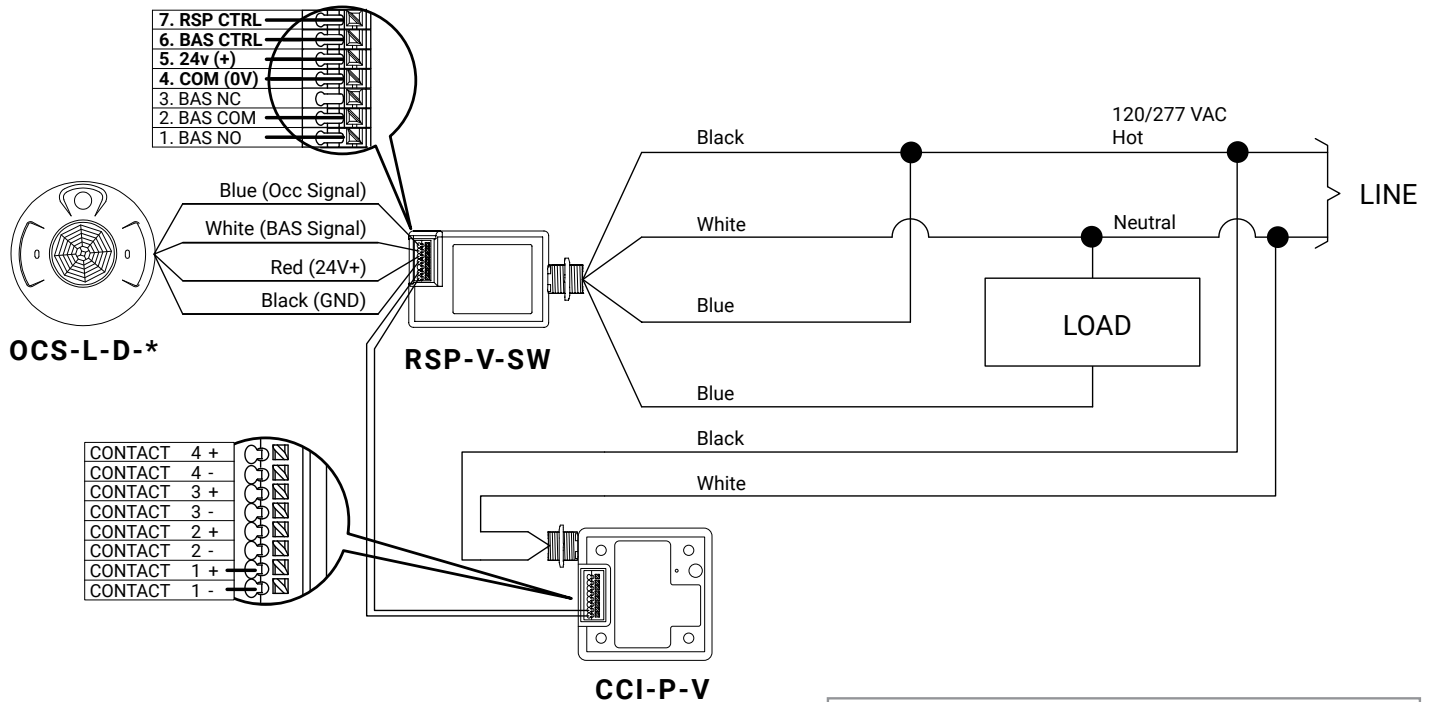
Device used as a CCI

Note: The maximum wire length used to connect to the CCI-P-V is 1000 ft. with 16 AWG



Device used as an input to the occupancy sensor

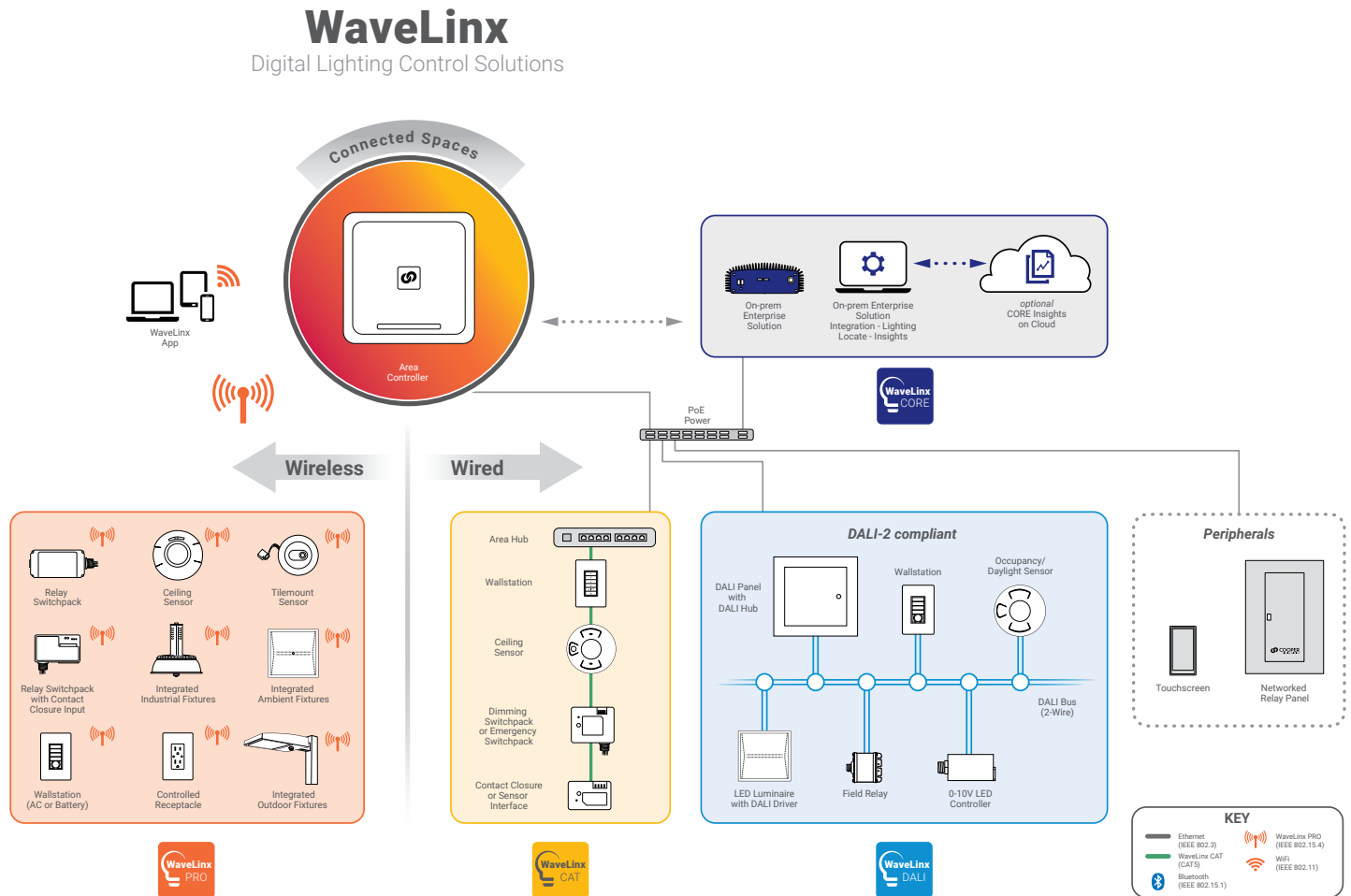
Note: The maximum wire length used to connect to the CCI-P-V is 1000 ft. with 16 AWG



System Diagram:

This diagram shows the main components of the WaveLinx connected lighting system with WaveLinx DALI, CAT and PRO devices. The PRO devices communicate using wireless mesh technology based on the IEEE 802.15.4 standard. A PoE LAN connection for each WaveLinx Area Controller (WAC) is required for power and data access to the building lighting network. The CAT devices communicate over the category 5 based communication bus and control the light fixtures using a relay (on/off) and 0-10V output (dim/raise). WaveLinx DALI devices communicate via a DALI bus (2 wires), which connects various components including DALI fixtures, a DALI DAC (DALI to 0-10V converter), DALI field relays, DALI wallstations, and DALI occupancy sensors. WaveLinx Area Controllers (WAC) communicate with WaveLinx CORE Apps over the Ethernet network.

[View WaveLinx Network and IT Guidance Technical Guide](#)



Control Systems
• WaveLinx