

| | | | | | |
|-------------|--|-----------|--|------|--|
| Project | | Catalog # | | Type | |
| Prepared by | | Notes | | Date | |



PrentaLux CYL2W - 2" Wall Mount Cylinder

Sustainable LED Cylinder
Integral LED Light Engine
Functional Performance Decorative

Typical Applications

• Office • Education • Healthcare • Hospitality • Retail • National Accounts

Interactive Menu

- Order Information [page 2](#)
- Product Specifications & Colors [page 3](#)
- Textures [page 4](#)
- Lumen Maintenance & Photometric Data [page 5](#)
- Lumen/Wattage/LPW & UGR Data [page 5](#)



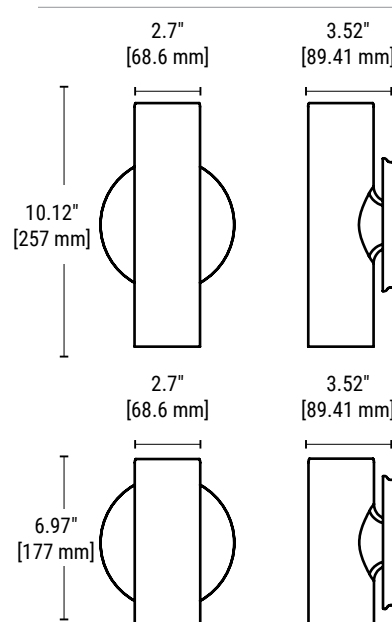
Filament only



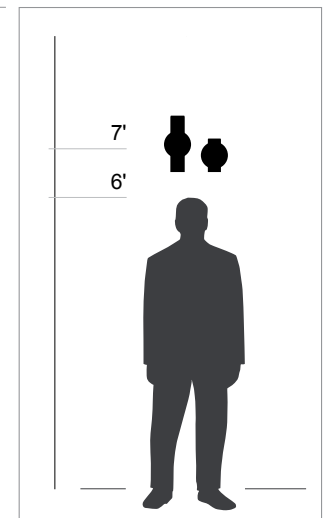
Top Product Features

- Created using Cooper Lighting Solutions additive manufacturing process, the PrentaLux CYL2W is a series of performance and decorative wall-mounted cylinders with an integral light engine.
- 6 housing texture options available.
- 9 standard housing color options and 5 inner trim color options with additional on-demand colors available.
- 90+ CRI standard with 4 CCT options (2700K, 3000K, 3500K, 4000K).
- 3 Light Levels: 1000, 1500, 2000 (DI only) nominal lumens.
- Integral driver with two dimming protocols. 1-10V (120-277V) and ELV reverse phase (120V).
- [Declare compliant](#)
- LBC Red List approved.
- 5-year limited warranty.

Dimensions



Scale



Order Information

SAMPLE CATALOG NUMBER: PRLX-CYL2W-DR-10-935-10L-FL-U-S-BLAK-MW-BRSS-DB

| Domestic Preferences | Brand | Series | Distributions | Height | CRI/CCT | Light Level* | Optics (Direct) | Optics (Indirect) |
|---|-------------|---------------------------------------|--|---|--|---|---|---|
| [Blank] = Standard BAA = Buy America Act | PRLX | CYL2W = 2" Cylinder Wall Mount | DR = Direct Only DI = Direct Indirect | 06 = 6" Tall 10 = 10" Tall | 927 = 90 CRI, 2700K 930 = 90 CRI, 3000K 935 = 90 CRI, 3500K 940 = 90 CRI, 4000K | 10L = 1000 lms, 9.5W 15L = 1500 lms, 13.2W 20L = 2000 lms (DI, 10" Tall only) | SP = Spot (19°) MD = Medium (23°) NF = Narrow Flood (27°) FL = Flood (38°) | Blank = n/a SP = Spot (19°) MD = Medium (23°) NF = Narrow Flood (27°) FL = Flood (38°) |
| 1. Only product configurations with this designated prefix are built to be compliant with the Buy American Act of 1933 (BAA). Please refer to DOMESTIC PREFERENCES website for more information. Components shipped separately may be separately analyzed under domestic preference requirements. | Notes | Notes | Notes | Notes | Notes | Notes 1. Nominal lumens above are based on 90 CRI and 3500K values. Use Performance Tables and IES files for precise outputs. 2. Lumen output is split between direct and indirect when DI distribution is chosen (eg. 10L = 500 lms up and 500 lms down). 3. 20L output only available in DI distribution, 10" tall height. 4. 15L not available with VF, QS and HC textures for DR=Direct Only configuration. | Notes | |

Continue here to make complete selections

| Voltage | Dimming | Housing Color ¹ | Housing Texture | Trim Color ¹ | Canopy / Cover |
|---|--|--|--|---|--|
| U = Universal Voltage (120-277V) | S = 0-10V and ELV reverse phase. 100-5% | Standard Housing Colors: WHITE = Satin White BLAK = Satin Black GRAY = Satin Gray ROSE = Satin Rose CAPP = Satin Cappuccino SAGE = Satin Sage BRNZ = Satin Bronze BRSS = Satin Brass SLVR = Silver XXXX² = On-Demand Color | Outer Shade Textures: MW = Micro Woven (Standard) NL = Natural Lines VF = Vertical Fluted CH = Checkered QS = Quilted Square HC = Honeycomb XX² = Other Shade Texture | Standard Trim Colors: WHITE = Satin White BLAK = Satin Black SLVR = Silver BRNZ = Satin Bronze BRSS = Satin Brass HTCM = Housing Trim Color Match XXXX² = On-Demand Color | DW = Disk - White DB = Disk - Black DC = Disk Color Match Housing |
| Notes | Notes | Notes 1. See page 3 for images of color options. 2. On-Demand colors available with possible extended lead times and additional costs. Consult factory. See page 3 for images of On-Demand color options. | Notes 1. See page 4 for texture details and options. 2. Consult factory to request other textures. Extended lead times, additional costs, and minimum order quantity may apply. 3. VF, QS and HC textures not available with 15L lumen output in DR=Direct Only configuration | Notes 1. See page 3 for images of color options. 2. On-Demand colors available with possible extended lead times and additional costs. Consult factory. See page 3 for images of On-Demand color options. | Notes |

Product Specifications

Construction

- PrentaLux CYL2W consists of an integral LED light engine and driver.
- Housing components are made with a robust polycarbonate material utilizing a proprietary additive manufacturing process.
- The polycarbonate used for PrentaLux fixtures is bio-circular and thermally, mechanically and optically optimized for professional/commercial installations. Designed, engineered, and printed in the United States.

Electrical

- Standard 0-10V and ELV combination dimming protocol.

LED & Light Engine

- Available in 2700K, 3000K, 3500K, and 4000K CCT and 90 CRI only.
- Lumen packages ranging from nominal 1000, 1500 (and 2000 lumens for Direct-Indirect), subject to specific CCT and Light Level.

Driver

- 0-10V and ELV with 5% dimming.

Optics

- Polar plot and UGR data on page 5.

Environment

- Suited for 25° ambient. Damp location rated.

Shielding

- Optic depth and design provides excellent physical cut off.

Colors & Textures

- 9 standard housing colors and 6 standard housing textures available. On-Demand colors and textures available with possible extended lead times and additional costs. Please consult factory.

Weight

- All products are lightweight and much easier to install than traditional pendants.
- 10" CYL2 weighs approximately 1.75 lbs
- 6" CYL2 weighs approximately 1.4 lbs

Warranty

- Standard five-year limited warranty.

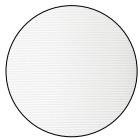
Compliance

- Components are UL recognized and luminaires are cULus listed for 25° C ambient environments. Damp Location Listed
- Filament material is UL certified.
- BAA compliant
- RoHS compliant
- ISCC certified (for 3D printed materials). PrentaLux products now utilize at least 75% recycled or bio-circular materials (using an ISCC certified mass balance approach) for printing our 3D parts.
- Not to be installed in food prep areas and hazardous environments which may expose the product to pollutants such as oil, grease, or VOCs.
- IK02 impact rated. Not for installations in locations such as gymnasiums, arenas, sports complexes, multi-purpose rooms, and any other locations where the fixture potentially will be subject to impacts from external sources.

Sustainability Specifications

- PrentaLux 3D printed parts are produced with at least 75% recycled or bio-circular materials (using an ISCC certified mass balance approach).
- ISCC certified. Certification applies only to 3D printed material.
- Declare compliant.
- LBC Red List approved.

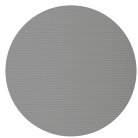
Standard Housing Colors



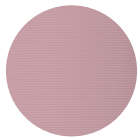
WHTE - White



BLAK - Black



GRAY - Gray



ROSE - Rose



CAPP - Cappuccino



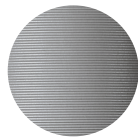
SAGE - Sage



BRNZ - Bronze



BRSS - Brass



SLVR - Silver

Trim Colors



WHTE - White



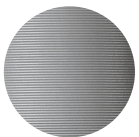
BLAK - Black



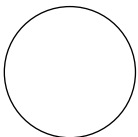
BRNZ - Bronze



BRSS - Brass



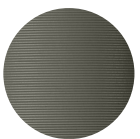
SLVR - Silver



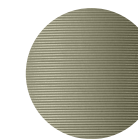
HTCM - Housing Trim Color Match

On-Demand Colors

These On-Demand color options for housing and trims may have extended lead times and/or additional costs. Please consult factory.



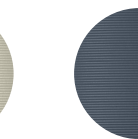
ENGR - Enamel Green



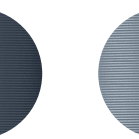
MEGR - Metallic Green



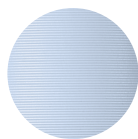
MCHA - Matcha



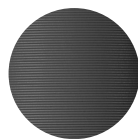
STBL - Steel Blue



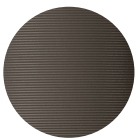
MEBL - Metallic Blue



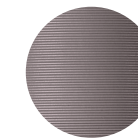
MYBL - Misty Blue



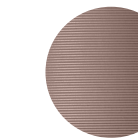
DKGY - Dark Gray



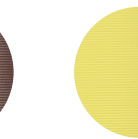
STBR - Stone Brown



MEPU - Metallic Purple



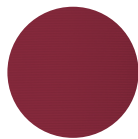
RGLD - Rose Gold



CITR - Citrona



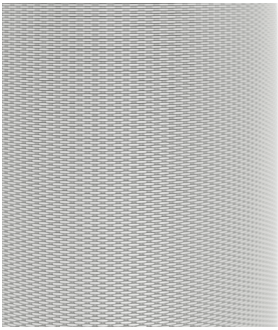
CRWH - Cream White



BURG - Burgundy

Housing Textures

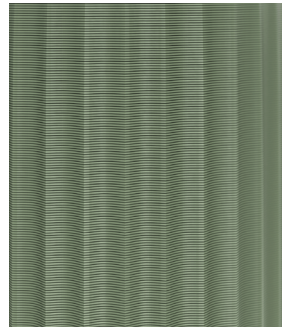
Close up view of textures



Micro Woven (MV)



Natural Lines (NL)



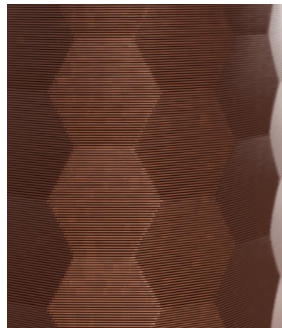
Vertical Fluted (VF)



Checkered (CH)



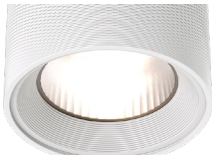
Quilted Square (QS)



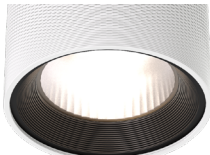
Honeycomb (HC)

Trim Colors

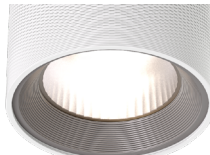
Close up view of trims



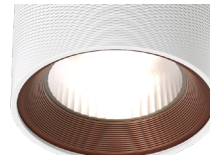
WHTE - White



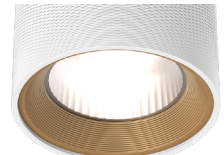
BLAK - Black



SLVR - Silver



BRNZ - Bronze



BRSS - Brass

Photometric Data - Spot

| PRENTALUX - CYL2 - 2"- SPOT - @ 3000K / 90 CRI | | | |
|--|---|---|--|
| | Light Level 10L | Light Level 15L | |
| Filename | PRLX-CYL2W-DR-X-930-10L-SP-U-S-X-X-BLAK.ies | PRLX-CYL2W-DR-X-930-15L-SP-U-S-X-X-BLAK.ies | |
| Test No. | P1057408 | P1057412 | |
| Lumcat | PRLX-CYL2W-DR-X-930-10L-SP-U-S-X-X-BLAK | PRLX-CYL2W-DR-X-930-15L-SP-U-S-X-X-BLAK | |
| Lumens | 1162.4 Lm | 1545.2 Lm | |
| Input Watts | 9 W | 13 W | |
| Efficacy LPW | 129.2 Lm/W | 118.9 Lm/W | |
| CCT | 3000K | 3000K | |
| Spacing Criteria (0/90/45) | 0.33 / 0.33 / 0.34 | 0.33 / 0.33 / 0.34 | |

Lumen/Wattage/LPW Table - Spot

| LUMEN Table per CRI, CCT, and Light Level | | | Spot | WATTS | EFFICACY (Lm/W) |
|---|------|-----|--------|-------|-----------------|
| CRI | CCT | LL | | | |
| 90 | 2700 | 10L | 1115.9 | 9 | 124 |
| | | 15L | 1483.4 | 13 | 114.1 |
| | 3000 | 10L | 1162.4 | 9 | 129.2 |
| | | 15L | 1545.2 | 13 | 118.9 |
| | 3500 | 10L | 1234.3 | 8.9 | 138.7 |
| | | 15L | 1640.7 | 13 | 126.2 |
| | 4000 | 10L | 1224.8 | 8.9 | 137.6 |
| | | 15L | 1628.2 | 13 | 125.2 |

Photometric Data - Medium

| PRENTALUX - CYL2 - 2"- MEDIUM - @ 3000K / 90 CRI | | | |
|--|---|---|--|
| | Light Level 10L | Light Level 15L | |
| Filename | PRLX-CYL2W-DR-X-930-10L-MD-U-S-X-X-BLAK.ies | PRLX-CYL2W-DR-X-930-15L-MD-U-S-X-X-BLAK.ies | |
| Test No. | P1057406 | P1057410 | |
| Lumcat | PRLX-CYL2W-DR-X-930-10L-MD-U-S-X-X-BLAK | PRLX-CYL2W-DR-X-930-15L-MD-U-S-X-X-BLAK | |
| Lumens | 1192.1 Lm | 1584.8 Lm | |
| Input Watts | 9 W | 13 W | |
| Efficacy LPW | 132.5 Lm/W | 121.9 Lm/W | |
| CCT | 3000K | 3000K | |
| Spacing Criteria (0/90/45) | 0.39 / 0.39 / 0.42 | 0.39 / 0.39 / 0.42 | |

Lumen/Wattage/LPW Table - Medium

| LUMEN Table per CRI, CCT, and Light Level | | | Medium | WATTS | EFFICACY (Lm/W) |
|---|------|-----|--------|-------|-----------------|
| CRI | CCT | LL | | | |
| 90 | 2700 | 10L | 1144.5 | 9 | 127.2 |
| | | 15L | 1521.4 | 13 | 117 |
| | 3000 | 10L | 1192.1 | 9 | 132.5 |
| | | 15L | 1584.8 | 13 | 121.9 |
| | 3500 | 10L | 1265.9 | 8.9 | 142.2 |
| | | 15L | 1682.8 | 13 | 129.4 |
| | 4000 | 10L | 1256.2 | 8.9 | 141.1 |
| | | 15L | 1669.6 | 13 | 128.5 |

Photometric Data - Narrow Flood

| PRENTALUX - CYL2 - 2"- NARROW FLOOD - @ 3000K / 90 CRI | | | |
|--|--|---|--|
| | Light Level 10L | Light Level 15L | |
| Filename | PRLX-CYL2W-DR-X-930-10L-NF-U-S-X-X-BLAKies | PRLX-CYL2W-DR-X-930-15L-NF-U-S-X-X-BLAK.ies | |
| Test No. | P1057407 | P1057411 | |
| Lumcat | PRLX-CYL2W-DR-X-930-15L-NF-U-S-X-X-BLAK | PRLX-CYL2W-DR-X-930-15L-NF-U-S-X-X-BLAK | |
| Lumens | 1212.5 Lm | 1611.9 Lm | |
| Input Watts | 9 W | 13 W | |
| Efficacy LPW | 134.7 Lm/W | 124 Lm/W | |
| CCT | 3000K | 3000K | |
| Spacing Criteria (0/90/45) | 0.45 / 0.45 / 0.48 | 0.45 / 0.45 / 0.48 | |

Lumen/Wattage/LPW Table - Narrow Flood

| LUMEN Table per CRI, CCT, and Light Level | | | Narrow Flood | WATTS | EFFICACY (Lm/W) |
|---|------|-----|--------------|-------|-----------------|
| CRI | CCT | LL | | | |
| 90 | 2700 | 10L | 1164 | 9 | 129.3 |
| | | 15L | 1547.4 | 13 | 119 |
| | 3000 | 10L | 1212.5 | 9 | 134.7 |
| | | 15L | 1611.9 | 13 | 124 |
| | 3500 | 10L | 1287.6 | 8.9 | 144.7 |
| | | 15L | 1711.6 | 13 | 131.7 |
| | 4000 | 10L | 1277.7 | 8.9 | 143.6 |
| | | 15L | 1698.5 | 13 | 130.7 |

Photometric Data - Flood

| PRENTALUX - CYL2 - 2"- FLOOD - @ 3000K / 90 CRI | | | |
|---|---|---|--|
| | Light Level 10L | Light Level 15L | |
| Filename | PRLX-CYL2W-DR-X-930-10L-FL-U-S-X-X-BLAK.ies | PRLX-CYL2W-DR-X-930-15L-FL-U-S-X-X-BLAK.ies | |
| Test No. | P1057405 | P1057409 | |
| Lumcat | PRLX-CYL2W-DR-X-930-10L-FL-U-S-X-X-BLAK | PRLX-CYL2W-DR-X-930-15L-FL-U-S-X-X-BLAK | |
| Lumens | 1111.2 Lm | 1477.2 Lm | |
| Input Watts | 9 W | 13 W | |
| Efficacy LPW | 123.5 Lm/W | 113.6 Lm/W | |
| CCT | 3000K | 3000K | |
| Spacing Criteria (0/90/45) | 0.61 / 0.61 / 0.6 | 0.61 / 0.61 / 0.6 | |

Lumen/Wattage/LPW Table - Flood

| LUMEN Table per CRI, CCT, and Light Level | | | Flood | WATTS | EFFICACY (Lm/W) |
|---|------|-----|--------|-------|-----------------|
| CRI | CCT | LL | | | |
| 90 | 2700 | 10L | 1066.7 | 9 | 118.5 |
| | | 15L | 1418.1 | 13 | 109.1 |
| | 3000 | 10L | 1111.2 | 9 | 123.5 |
| | | 15L | 1477.2 | 13 | 113.6 |
| | 3500 | 10L | 1179.9 | 8.9 | 132.6 |
| | | 15L | 1568.5 | 13 | 120.7 |
| | 4000 | 10L | 1170.8 | 8.9 | 131.6 |
| | | 15L | 1556.5 | 13 | 119.7 |

Color Metrics - TM-30-15 & CRI/CIE

| 98 CRI Color Metric Summary - 2700K* | 98 CRI Color Metric Summary - 3000K* | 98 CRI Color Metric Summary - 3500K* | 98 CRI Color Metric Summary - 4000K* | | | | | | | | | | | | | | | | | | | | | | | | | | | | | | | | |
|---|--------------------------------------|--------------------------------------|--------------------------------------|------------|---------|-----------|--|-----------|---|----------|-----------|--|------------|---------|-----------|--|-----------|---|----------|---------|--|------------|---------|---------|--|---------|---|----------|-----------|--|------------|---------|-----------|--|-----------|
| <table border="1"> <tr> <td>TM-30-15</td> <td>Rf = 91.4</td> </tr> <tr> <td></td> <td>Rg = 100.6</td> </tr> <tr> <td>CRI/CIE</td> <td>Ra = 93.5</td> </tr> <tr> <td></td> <td>R9 = 57.3</td> </tr> </table> | TM-30-15 | Rf = 91.4 | | Rg = 100.6 | CRI/CIE | Ra = 93.5 | | R9 = 57.3 | <table border="1"> <tr> <td>TM-30-15</td> <td>Rf = 91.5</td> </tr> <tr> <td></td> <td>Rg = 100.2</td> </tr> <tr> <td>CRI/CIE</td> <td>Ra = 93.2</td> </tr> <tr> <td></td> <td>R9 = 55.9</td> </tr> </table> | TM-30-15 | Rf = 91.5 | | Rg = 100.2 | CRI/CIE | Ra = 93.2 | | R9 = 55.9 | <table border="1"> <tr> <td>TM-30-15</td> <td>Rf = 90</td> </tr> <tr> <td></td> <td>Rg = 100.7</td> </tr> <tr> <td>CRI/CIE</td> <td>Ra = 92</td> </tr> <tr> <td></td> <td>R9 = 60</td> </tr> </table> | TM-30-15 | Rf = 90 | | Rg = 100.7 | CRI/CIE | Ra = 92 | | R9 = 60 | <table border="1"> <tr> <td>TM-30-15</td> <td>Rf = 90.1</td> </tr> <tr> <td></td> <td>Rg = 100.8</td> </tr> <tr> <td>CRI/CIE</td> <td>Ra = 91.7</td> </tr> <tr> <td></td> <td>R9 = 64.7</td> </tr> </table> | TM-30-15 | Rf = 90.1 | | Rg = 100.8 | CRI/CIE | Ra = 91.7 | | R9 = 64.7 |
| TM-30-15 | Rf = 91.4 | | | | | | | | | | | | | | | | | | | | | | | | | | | | | | | | | | |
| | Rg = 100.6 | | | | | | | | | | | | | | | | | | | | | | | | | | | | | | | | | | |
| CRI/CIE | Ra = 93.5 | | | | | | | | | | | | | | | | | | | | | | | | | | | | | | | | | | |
| | R9 = 57.3 | | | | | | | | | | | | | | | | | | | | | | | | | | | | | | | | | | |
| TM-30-15 | Rf = 91.5 | | | | | | | | | | | | | | | | | | | | | | | | | | | | | | | | | | |
| | Rg = 100.2 | | | | | | | | | | | | | | | | | | | | | | | | | | | | | | | | | | |
| CRI/CIE | Ra = 93.2 | | | | | | | | | | | | | | | | | | | | | | | | | | | | | | | | | | |
| | R9 = 55.9 | | | | | | | | | | | | | | | | | | | | | | | | | | | | | | | | | | |
| TM-30-15 | Rf = 90 | | | | | | | | | | | | | | | | | | | | | | | | | | | | | | | | | | |
| | Rg = 100.7 | | | | | | | | | | | | | | | | | | | | | | | | | | | | | | | | | | |
| CRI/CIE | Ra = 92 | | | | | | | | | | | | | | | | | | | | | | | | | | | | | | | | | | |
| | R9 = 60 | | | | | | | | | | | | | | | | | | | | | | | | | | | | | | | | | | |
| TM-30-15 | Rf = 90.1 | | | | | | | | | | | | | | | | | | | | | | | | | | | | | | | | | | |
| | Rg = 100.8 | | | | | | | | | | | | | | | | | | | | | | | | | | | | | | | | | | |
| CRI/CIE | Ra = 91.7 | | | | | | | | | | | | | | | | | | | | | | | | | | | | | | | | | | |
| | R9 = 64.7 | | | | | | | | | | | | | | | | | | | | | | | | | | | | | | | | | | |

* Colors are for visual orientation purposes only. Created with the ANSI/IES TM-30-18 Calculator Version 2.0