

Project		Catalog #		Type	
Prepared by		Notes		Date	



Interactive Menu

- Order Information [page 2](#)
- Product Specifications & Colors [page 3](#)
- Textures [page 4](#)
- Lumen Maintenance & Photometric Data [page 5](#)
- Lumen/Wattage/LPW & UGR Data [page 5](#)

PrentaLux

CYL2S - 2" Surface Mount Cylinder

Sustainable LED Cylinder
Integral LED Light Engine
Functional Performance Decorative

Typical Applications

• Office • Education • Healthcare • Hospitality • Retail • National Accounts



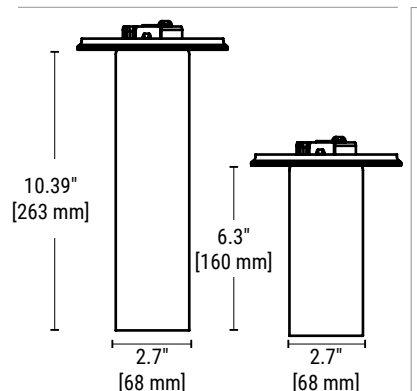
Filament only



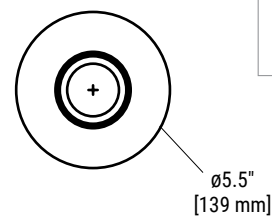
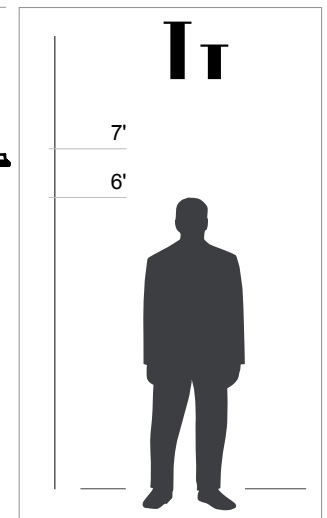
Top Product Features

- Created using the Cooper Lighting additive manufacturing process, this PrentaLux CYL2S is a series of performance and decorative surface-mounted cylinders with an integral LED light engine.
- 7 housing texture options available.
- 9 standard housing color options and 5 inner trim color options with additional on-demand colors available.
- 90+ CRI standard with 4 CCT options (2700K, 3000K, 3500K, 4000K).
- 2 Light Levels: 1000, 1500 nominal lumens.
- Integral driver with two dimming protocols. 1-10V (120-277V) and ELV reverse phase (120V).
- [Declare compliant](#)
- LBC Red List approved.
- 5 Year limited warranty.

Dimensions



Scale



Order Information

SAMPLE CATALOG NUMBER: PRLX-CYL2S-10-927-10L-FL-U-S-WHTE-MW-BRSS-DW

Domestic Preferences	Brand	Series	Height	CRI/CCT	Light Level	Optics	Voltage
[Blank] = Standard BAA = Buy America Act	PRLX	CYL2S= 2" Cylinder, Surface Mount	06 = 6" Tall 10 = 10" Tall	927 = 90 CRI, 2700K 930 = 90 CRI, 3000K 935 = 90 CRI, 3500K 940 = 90 CRI, 4000K	10L = 1000 lms, 9.5W 15L = 1500 lms, 13.2W	SP = Spot (19°) MD = Medium (23°) NF = Narrow Flood (27°) FL = Flood (38°)	U = Universal Voltage (120-277V)
1. Only product configurations with this designated prefix are built to be compliant with the Buy American Act of 1933 (BAA). Please refer to DOMESTIC PREFERENCES website for more information. Components shipped separately may be separately analyzed under domestic preference requirements.	Notes	Notes		Notes	Notes 1. Nominal lumens above are based on 90 CRI and 3500K values. Use Performance Tables and IES files for precise outputs. 2. See Lumen Table on page 5 for each CCT lumen value. 3. 15L not available with VF, QS, HC, and IC textures.	Notes	Notes

Continue here to make complete selections

Dimming	Housing Color ¹	Housing Texture	Trim Color ¹	Canopy / Cover
S = 0-10V andELV reverse phase. 100-5%	Standard Housing Colors: WHITE = Satin White BLAK = Satin Black GRAY = Satin Gray ROSE = Satin Rose CAPP = Satin Cappuccino SAGE = Satin Sage BRNZ = Satin Bronze BRSS = Satin Brass SLVR = Silver XXXX² = On-Demand Color	Outer Shade Textures: MW = Micro Woven (Standard) NL = Natural Lines VF = Vertical Fluted CH = Checkered QS = Quilted Square HC = Honeycomb IC = Iced Out XX² = Other Shade Texture	Standard Trim Colors: WHITE = Satin White BLAK = Satin Black SLVR = Silver BRNZ = Satin Bronze BRSS = Satin Brass HTCM = Housing Trim Color Match XXXX² = On-Demand Color	Cable Mount DW = Disk - White DB = Disk - Black DC = Disk canopy matches outer shade color (opaque color only)
Notes	Notes 1. See page 3 for images of color options. 2. On-Demand colors available with possible extended lead times and additional costs. Consult factory. See page 3 for images of On-Demand color options.	Notes 1. See page 4 for texture details and options. 2. Consult factory to request other textures. Extended lead times, additional costs, and minimum order quantity may apply. 3. Honeycomb, Vertical Fluted, Quilted Square and Iced Out textures are unavailable for 1500 lms.	Notes 1. See page 3 for images of color options. 2. On-Demand colors available with possible extended lead times and additional costs. Consult factory. See page 3 for images of On-Demand color options.	Notes

Product Specifications

Construction

- PrentaLux CYL2S consists of an integral LED light engine and driver.
- Housing components are made with a robust polycarbonate material utilizing a proprietary additive manufacturing process.
- The polycarbonate used for PrentaLux fixtures is bio-circular and thermally, mechanically and optically optimized for professional/commercial installations. Designed, engineered, and printed in the United States.

Electrical

- Standard 0-10V and ELV combination dimming protocol.

LED & Light Engine

- Available in 2700K, 3000K, 3500K, and 4000K CCT and 90 CRI only.
- Lumen packages ranging from nominal 1000, 1500 lumens (subject to specific CCT and Light Level).

Driver

- 0-10V and ELV with 5% dimming.

Optics

- Polar plot and UGR data on page 5.

Environment

- Suited for 25° ambient. Damp location rated.

Shielding

- Optic depth and design provides excellent physical cut off.

Colors & Textures

- 9 standard housing colors and 7 standard textures available. On-Demand colors and textures available with possible extended lead times and additional costs. Please consult factory.

Mounting

- Surface: Mounting option include UL certified ceiling-mounted disk shape, mounting hardware.

Weight

- All products are lightweight and much easier to install than traditional pendants. See Mounting section for Stem Ordering Codes.
- 10" CYL2S weighs approximately 1.2 lbs
- 6" CYL2S weighs approximately 1.0 lbs

Warranty

- Standard five-year limited warranty.

Compliance

- Components are UL recognized and luminaires are cULus listed for 25°C ambient environments. Damp Location Listed
- Filament material is UL certified.
- BAA compliant
- RoHS compliant
- ISCC certified (for 3D printed materials). PrentaLux products now utilize at least 75% recycled or bio-circular materials (using an ISCC certified mass balance approach) for printing our 3D parts.
- Not to be installed in food prep areas and hazardous environments which may expose the product to pollutants such as oil, grease, or VOCs.
- IK02 impact rated. Not for installations in locations such as gymnasiums, arenas, sports complexes, multi-purpose rooms, and any other locations where the fixture potentially will be subject to impacts from external sources.

Sustainability Specifications

- PrentaLux 3D printed parts are produced with at least 75% recycled or bio-circular materials (using an ISCC certified mass balance approach).
- ISCC certified. Certification applies only to 3D printed material.
- Declare compliant.
- LBC Red List approved.

Standard Housing Colors



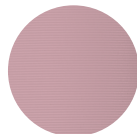
WHITE - White



BLAK - Black



GRAY - Gray



ROSE - Rose



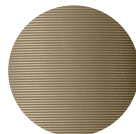
CAPP - Cappuccino



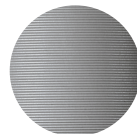
SAGE - Sage



BRNZ - Bronze



BRSS - Brass



SLVR - Silver

Trim Colors



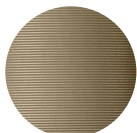
WHITE - White



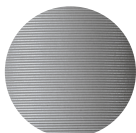
BLAK - Black



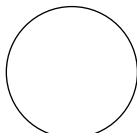
BRNZ - Bronze



BRSS - Brass



SLVR - Silver



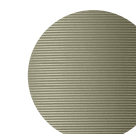
HTCM - Housing Trim Color Match

On-Demand Colors

These On-Demand color options for housing and trims may have extended lead times and/or additional costs. Please consult factory.



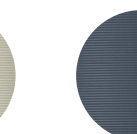
ENGR - Enamel Green



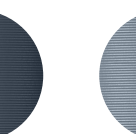
MEGR - Metallic Green



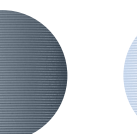
MCHA - Matcha



STBL - Steel Blue



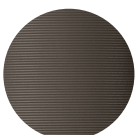
MEBL - Metallic Blue



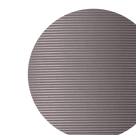
MYBL - Misty Blue



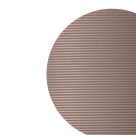
DKGY - Dark Gray



STBR - Stone Brown



MEPU - Metallic Purple



RGLD - Rose Gold



CITR - Citrona



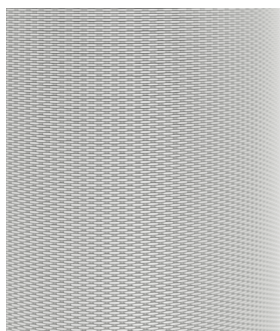
CRWH - Cream White



BURG - Burgundy

Housing Textures

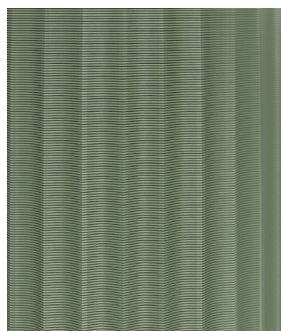
Close up view of textures



Micro Woven (MV)



Natural Lines (NL)



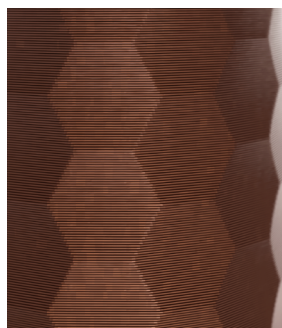
Vertical Fluted (VF)



Checkered (CH)



Quilted Square (QS)



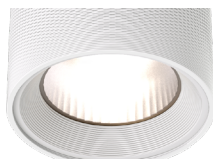
Honeycomb (HC)



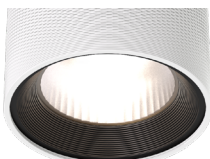
Iced Out (IC)

Trim Colors

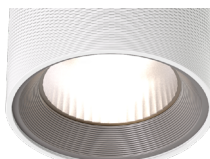
Close up view of trims



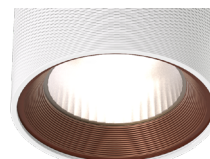
WHITE - White



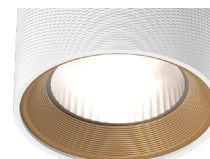
BLAK - Black



SLVR - Silver

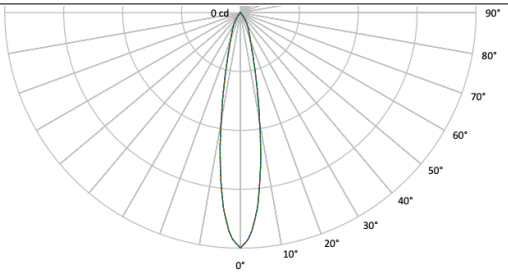


BRNZ - Bronze



BRSS - Brass

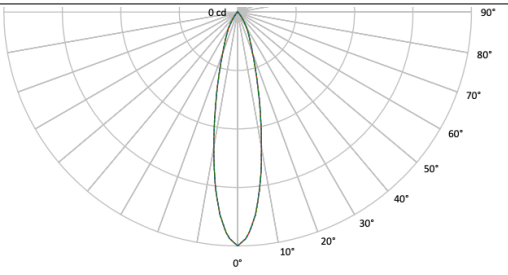
Photometric Data - Spot

PRENTALUX - CYL2 - 2"- SPOT - @ 3000K / 90 CRI			
	Light Level 10L	Light Level 15L	
Filename	PRLX-CYL2-X-930-10L-SP-U-S-X-X-BLAK.ies	PRLX-CYL2-X-930-15L-SP-U-S-X-X-BLAK.ies	
Test No.	P1057184	P1057188	
Lumcat	PRLX-CYL2-X-930-10L-SP-U-S-X-X-BLAK	PRLX-CYL2-X-930-15L-SP-U-S-X-X-BLAK	
Lumens	1162.4 Lm	1545.2 Lm	
Input Watts	9 W	13 W	
Efficacy LPW	129.2 Lm/W	118.9 Lm/W	
CCT	3000K	3000K	
Spacing Criteria (0/90/45)	0.33 / 0.33 / 0.34	0.33 / 0.33 / 0.34	

Lumen/Wattage/LPW Table - Spot

LUMEN Table per CRI, CCT, and Light Level			Spot	WATTS	EFFICACY (Lm/W)
CRI	CCT	LL			
90	2700	10L	1115.9	9	124
		15L	1483.4	13	114.1
	3000	10L	1162.4	9	129.2
		15L	1545.2	13	118.9
	3500	10L	1234.3	8.9	138.7
		15L	1640.7	13	126.2
	4000	10L	1224.8	8.9	137.6
		15L	1628.2	13	125.2

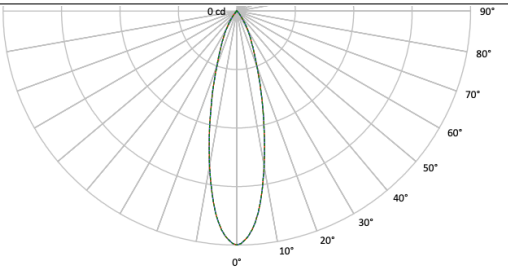
Photometric Data - Medium

PRENTALUX - CYL2 - 2"- MEDIUM - @ 3000K / 90 CRI			
	Light Level 10L	Light Level 15L	
Filename	PRLX-CYL2-X-930-10L-MD-U-S-X-X-BLAK.ies	PRLX-CYL2-X-930-15L-MD-U-S-X-X-BLAK.ies	
Test No.	P1057182	P1057186	
Lumcat	PRLX-CYL2-X-930-10L-MD-U-S-X-X-BLAK	PRLX-CYL2-X-930-15L-MD-U-S-X-X-BLAK	
Lumens	1192.1 Lm	1584.8 Lm	
Input Watts	9 W	13 W	
Efficacy LPW	132.5 Lm/W	121.9 Lm/W	
CCT	3000K	3000K	
Spacing Criteria (0/90/45)	0.39 / 0.39 / 0.42	0.39 / 0.39 / 0.42	

Lumen/Wattage/LPW Table - Medium

LUMEN Table per CRI, CCT, and Light Level			Medium	WATTS	EFFICACY (Lm/W)
CRI	CCT	LL			
90	2700	10L	1144.5	9	127.2
		15L	1521.4	13	117
	3000	10L	1192.1	9	132.5
		15L	1584.8	13	121.9
	3500	10L	1265.9	8.9	142.2
		15L	1682.8	13	129.4
	4000	10L	1256.2	8.9	141.1
		15L	1669.6	13	128.5

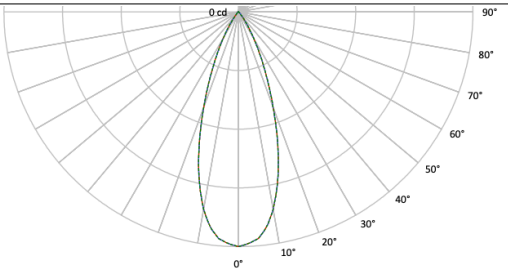
Photometric Data - Narrow Flood

PRENTALUX - CYL2 - 2"- NARROW FLOOD - @ 3000K / 90 CRI			
	Light Level 10L	Light Level 15L	
Filename	PRLX-CYL2-X-930-10L-NF-U-S-X-X-BLAK.ies	PRLX-CYL2-X-930-15L-NF-U-S-X-X-BLAK.ies	
Test No.	P1057183	P1057187	
Lumcat	PRLX-CYL2-X-930-10L-NF-U-S-X-X-BLAK	PRLX-CYL2-X-930-15L-NF-U-S-X-X-BLAK	
Lumens	1212.5 Lm	1611.9 Lm	
Input Watts	9 W	13 W	
Efficacy LPW	134.7 Lm/W	124 Lm/W	
CCT	3000K	3000K	
Spacing Criteria (0/90/45)	0.45 / 0.45 / 0.48	0.45 / 0.45 / 0.48	

Lumen/Wattage/LPW Table - Narrow Flood

LUMEN Table per CRI, CCT, and Light Level			Narrow Flood	WATTS	EFFICACY (Lm/W)
CRI	CCT	LL			
90	2700	10L	1164	9	129.3
		15L	1547.4	13	119
	3000	10L	1212.5	9	134.7
		15L	1611.9	13	124
	3500	10L	1287.6	8.9	144.7
		15L	1711.6	13	131.7
	4000	10L	1277.7	8.9	143.6
		15L	1698.5	13	130.7

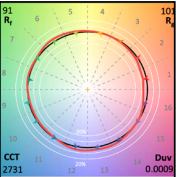
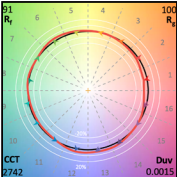
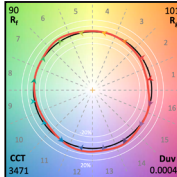
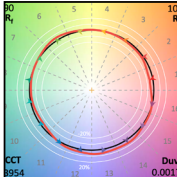
Photometric Data - Flood

PRENTALUX - CYL2 - 2"- FLOOD - @ 3000K / 90 CRI			
	Light Level 10L	Light Level 15L	
Filename	PRLX-CYL2-X-930-10L-FL-U-S-X-X-BLAK.ies	PRLX-CYL2-X-930-15L-FL-U-S-X-X-BLAK.ies	
Test No.	P1057181	P1057185	
Lumcat	PRLX-CYL2-X-930-10L-FL-U-S-X-X-BLAK	PRLX-CYL2-X-930-15L-FL-U-S-X-X-BLAK	
Lumens	1111.2 Lm	1477.2 Lm	
Input Watts	9 W	13 W	
Efficacy LPW	123.5 Lm/W	113.6 Lm/W	
CCT	3000K	3000K	
Spacing Criteria (0/90/45)	0.61 / 0.61 / 0.6	0.61 / 0.61 / 0.6	

Lumen/Wattage/LPW Table - Flood

LUMEN Table per CRI, CCT, and Light Level			Flood	WATTS	EFFICACY (Lm/W)
CRI	CCT	LL			
90	2700	10L	1066.7	9	118.5
		15L	1418.1	13	109.1
	3000	10L	1111.2	9	123.5
		15L	1477.2	13	113.6
	3500	10L	1179.9	8.9	132.6
		15L	1568.5	13	120.7
	4000	10L	1170.8	8.9	131.6
		15L	1556.5	13	119.7

Color Metrics - TM-30-15 & CRI/CIE

98 CRI Color Metric Summary - 2700K*		98 CRI Color Metric Summary - 3000K*		98 CRI Color Metric Summary - 3500K*		98 CRI Color Metric Summary - 4000K*	
	TM-30-15 Rf = 91.4 Rg = 100.6 Ra = 93.5 R9 = 57.3		TM-30-15 Rf = 91.5 Rg = 100.2 Ra = 93.2 R9 = 55.9		TM-30-15 Rf = 90 Rg = 100.7 Ra = 92 R9 = 60		TM-30-15 Rf = 90.1 Rg = 100.8 Ra = 91.7 R9 = 64.7

* Colors are for visual orientation purposes only. Created with the ANSI/IES TM-30-18 Calculator Version 2.0