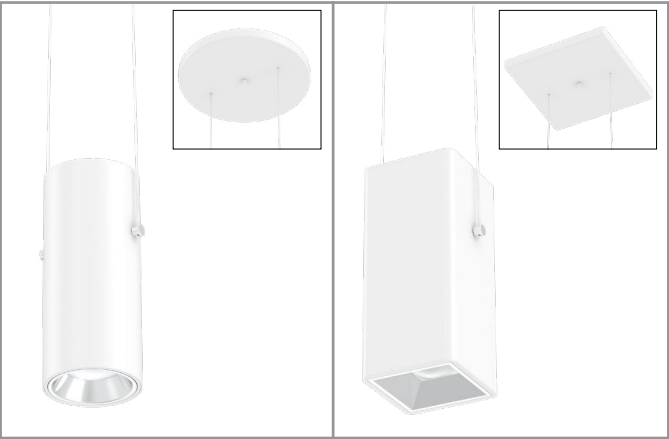


Project		Catalog #		Type	
Prepared by		Notes		Date	



# Portfolio

## LERPCS4D/LESQPCS4D LuxWire Cylinders

4" Shallow Round and Square Cylinder with high center beam optics, LuxWire Power Over Cable  
250-1500 Lumens

**Typical Applications**  
Office • Education • Healthcare • Hospitality • Retail • Residential

### Interactive Menu

- Order Information page 2
- Product Specifications page 4
- Energy Data page 5
- Photometric Data page 6
- Connected Systems page 14
- Product Warranty



### Top Product Features

- 250 to 1500 lumens; Offered in 90 and 97 CRI; Downlight
- Optics in 6°, 8°, and 5° increments from 10°-70°; Optional media holder accepts two lens media
- LuxWire™ provides low voltage power to the cylinder via aircraft cable
- Extruded aluminum housing; Matte Black, White, Bronze and Silver paint finishes, custom finishes available
- 6 color temperatures: 2400K, 2700K, 3000K, 3500K, 4000K and 5000K CCT
- Options to meet Trade Agreements Act requirements
- Downlight and Up/Down, Round and Square

### Dimensional and Mounting Details - page 10



additional  
product diagrams

## Order Information

SAMPLE ORDER NUMBER: LERPC4D10D010TRP

Domestic Preferences <sup>(30)</sup>	Cylinder	Lumens	Driver	Remote <sup>(8)</sup>	Finish <sup>(18)</sup>	Factory Installed Connected Lighting Options
<b>[Blank]</b> =Standard <b>BAA</b> =Buy American Act <b>TAA</b> = Trade Agreements Act	<b>LuxWire Aircraft Cable Up/Down <sup>(3)</sup></b> <b>LESQDPCS4D</b> =4-inch shallow up/down square, square opening LuxWire aircraft cable with power <sup>(1)</sup> <b>LESQRUDPCS4D</b> =4-inch shallow up/down square, round opening LuxWire aircraft cable with power <sup>(2)</sup> <b>LERUDPCS4D</b> =4-inch shallow up/down round LuxWire aircraft cable with power <sup>(2)</sup>  <b>LuxWire Aircraft Cable Ceiling Mount</b> <b>LESQPCS4D</b> =4-inch shallow square, square aperture surface mount LuxWire aircraft cable with power 120" <sup>(1)</sup> <b>LESQRPCS4D</b> =4-inch shallow square with round aperture surface mount LuxWire aircraft cable with power 120" <sup>(2)</sup> <b>LERPCS4D</b> =4-inch shallow round surface mount LuxWire aircraft cable with power 120" <sup>(2)</sup>	<b>02</b> =250 lumens <b>02B</b> =250 lumens for use with 6° optic <sup>(4)</sup> <b>05</b> =500 lumens <b>08</b> =800 lumens <b>10</b> =1000 lumens <b>15</b> =1500 lumens	<b>D010</b> =0-10V Dimming, 1% to 100%, 120V-277V, 500-1500 lumens, Up/Down integral 500-1500 lumens <b>3D010</b> =0-10V Dimming, 1% to 100%, 347V, 500-1500 lumens, Up/Down integral 500-1500 lumens (500 lumens require Remote Driver) <b>D010TR</b> =0-10V (120-277V) or line voltage (120V) dimming, 1% to 100% (250-1500 lumens, Up/Down integral 250-1500 lumens) <b>DE010</b> =0-10V Linear Dimming, 0.1% to 100%, 120V-277V, 250 lumen ( <b>02B</b> only), 800-1500 lumens, Up/Down integral 500-1500 Lumens <b>D5LT</b> =Fifth Light® DALI DT6 Logarithmic Dimming, 0.1% to 100%, 120V-277V, 250 lumen ( <b>02B</b> only), 800-1500 lumens, Up/Down integral 500-1500 lumens <b>DMX</b> =DMX/RDM Logarithmic Dimming, 0.1% to 100%, 120V-277V, 1000-1500 lumens, Up/Down integral 500-1500 lumens <sup>(5)</sup> <b>DMXCS</b> =DMX/RDM Logarithmic Dimming, 0.1% to 100%, 120V-277V, with RJ45 connection, 1000-1500, Up/Down integral 500-1500 lumens <sup>(5)</sup> <b>DLE</b> =Lutron Ecosystem dimming 1% to 100%, 120-277V; 1000-1500 lumens, Up/Down integral 500-1500 lumens <b>DLV</b> =Low Voltage System, 1000-1500 lumens, Up/Down integral 500-1000 lumens, remote 1000-1500 lumens	<b>blank</b> =Canopy mount driver (not available with DMX) <b>R</b> =Remote driver <sup>(9)</sup>	<b>P</b> =White <b>MB</b> =Matte Black <b>SL</b> =Silver <b>BZ</b> =Bronze	<b>WPN</b> = WaveLinX PRO Wireless Node without sensor <sup>(14) (96)</sup> <b>WLN</b> = WaveLinX LITE Wireless Node without sensor <sup>(14) (37)</sup>

SAMPLE ORDER NUMBER: EC4DR3002089035

Domestic Preferences <sup>(30)</sup>	Power Module	Optics	Lumen Levels <sup>(15)</sup>	Color	Media
<b>[Blank]</b> =Standard <b>BAA</b> =Buy American Act <b>TAA</b> = Trade Agreements Act	<b>EC4D</b> =4-inch cylinder light engine	<b>X</b> =No optic order separately <sup>(35)</sup>  <b>R06</b> =6° limited to 250 lumens <b>R08</b> =8° limited to 1000 lumens <b>R10</b> =10° limited to 1000 lumens <b>R15</b> =15° limited to 1000 lumens <b>R20</b> =20° limited to 1000 lumens <b>R25</b> =25° <b>R30</b> =30° <b>R35</b> =35° <b>R40</b> =40° <b>R45</b> =45° <b>R50</b> =50° <b>R55</b> =55° <b>R60</b> =60° <b>R65</b> =65° <b>R70</b> =70°	<b>For use with 6° Optic</b> <b>02</b> =250 Lumens  <b>For use with 8°, 10°, 15° and 20° Optic</b> <b>0210</b> =250, 500, 800, 1000 Lumens  <b>For use with 25° - 70° Optic</b> <b>0215</b> =250, 500, 800, 1000, 1500 Lumens	<b>90 CRI</b> <b>9024</b> = 90CRI, 2400K <b>9027</b> = 90CRI, 2700K <b>9030</b> = 90CRI, 3000K <b>9035</b> = 90CRI, 3500K <b>9040</b> = 90CRI, 4000K <b>9050</b> = 90CRI, 5000K  <b>97 CRI</b> <b>9727</b> = 97CRI, 2700K <b>9730</b> = 97CRI, 3000K	<b>Blank</b> =Engine accepts optic only (preferred if media will not be used) <b>2M</b> =Engine accepts up to 2 lenses or media (optic is recessed in engine)

SAMPLE ORDER NUMBER: 4LBSS3H

Domestic Preferences <sup>(30)</sup>	Trim	Reflector	Finish
<b>[Blank]</b> =Standard <b>BAA</b> =Buy American Act (SS3 spun trim only)	<b>4LB</b> =4" Reflector	<b>SS3</b> =Round shallow spun aluminum <b>SCS3</b> =Round shallow die cast <b>SCSSQ3</b> =Square shallow die cast (for use with LESQDPCS, LESQPCS)	<b>LI</b> =Specular Clear <sup>(15)</sup> <b>H</b> =Semi-Specular Clear <sup>(15)</sup> <b>WMH</b> =Warm Haze <sup>(15)</sup> <b>WH</b> =Wheat <sup>(15)</sup> <b>GPH</b> =Graphite Haze <sup>(15)</sup>  <b>B</b> =Specular Black <sup>(15)</sup> <b>MW</b> =Matte White <b>MB</b> =Matte Black <sup>(19)</sup> <b>MMS</b> =Matte Metallic Silver <sup>(19)</sup>

## Order Information

REQUIRED if Remote Driver (R) is specified on Cylinder

Domestic Preferences <sup>(30)</sup>	Remote Drivers <sup>(8)</sup>	Lumens	Voltage	Driver
[Blank]=Standard TAA= Trade Agreements Act	RD100=Remote 100 ft RD75= Remote 75 ft RD50= Remote 50 ft RD25= Remote 25 ft RD15= Remote 15 ft RD5= Remote 5 ft RD2= Remote 2 ft	02=250 lumens 02B=250 lumens for use with 6° optic <sup>(4)</sup> 05=500 lumens 08=800 lumens 10=1000 lumens 15=1500 lumens	blank=120-277V <sup>(11)</sup> 3=347V <sup>(34)</sup>	<p>D010=0-10V Dimming, 1% to 100%, 120V-277V, 500-1500 lumens, Up/down 500-800 lumens</p> <p>1D010=0-10V Dimming, 1% to 100%, 120V, Up/down 1000 to 1500 lumens</p> <p>2D010=0-10V Dimming, 1% to 100%, 277V, Up/down 1000 to 1500 lumens</p> <p>3D010=0-10V Dimming, 1% to 100%, 347V, 250 to 1500 lumens, Up/down 250-1500 lumens</p> <p>D010TR=0-10V (120-277V) or line voltage (120V) dimming, 1% to 100% 250-1500 lumens, Up/down 250-800 lumens</p> <p>1D010TR= 0-10V or line voltage Dimming, 1% to 100%, 120V, Up/down 1000 to 1500 lumens</p> <p>2D010TR= 0-10V or line voltage Dimming, 1% to 100%, 277V, Up/down 1000 to 1500 lumens</p> <p>3D010TR= 0-10V Dimming, 1% to 100%, 347V step down transformer, 250 to 1500 lumens, Up/down 250-1500 lumens</p> <p>DE010=0-10V Linear Dimming, 0.1% to 100%, 120V-277V, 250 lumen (02B only), 800-1500 lumens, Up/down 500-800 lumen</p> <p>1DE010=0-10V Dimming, 0.1% to 100%, 120V, Up/down 1000 to 1500 lumens</p> <p>2DE010=0-10V Dimming, 0.1% to 100%, 277V, Up/down 1000 to 1500 lumens</p> <p>3DE010=0-10V Dimming, 0.1% to 100%, 0-10V Dimming, 347V step down transformer, 800 to 1500 lumens, Up/down 500-1500 lumens</p> <p>D5LT=Fifth Light® DALI DT6 Logarithmic Dimming, 0.1% to 100%, 120V-277V, 250 lumen (02B only), 800-1500 lumens, Up/down 500-800 lumen</p> <p>1D5LT=Fifth Light® DALI DT6 Logarithmic Dimming, 0.1% to 100%, 120V, Up/down 1000 to 1500 lumens</p> <p>2D5LT=Fifth Light® DALI DT6 Logarithmic Dimming, 0.1% to 100%, 277V, Up/down 1000 to 1500 lumens</p> <p>3D5LT=Fifth Light® DALI DT6 Logarithmic Dimming, 0.1% to 100% 347V step down transformer, 800 to 1500 lumens, Up/down 500-1500 lumens</p> <p>DMX=DMX/RDM Logarithmic Dimming, 0.1% to 100%, 120V-277V, 1000-1500 lumens, Up/down 500-800 lumen <sup>(6)</sup></p> <p>1DMX= DMX/RDM Logarithmic Dimming, 0.1% to 100%, 120V, Up/down 1000 to 1500 lumens <sup>(6)</sup></p> <p>2DMX=DMX/RDM Logarithmic Dimming, 0.1% to 100%, 277V, Up/down 1000 to 1500 lumens <sup>(6)</sup></p> <p>3DMX=DMX/RDM Logarithmic Dimming, 0.1% to 100%, 347V step down transformer, 1000-1500 lumens, Up/down 500-1500 lumens <sup>(6)</sup></p> <p>DMXC5=DMX/RDM Logarithmic Dimming, 0.1% to 100%, 120V-277V, with RJ45 connection, 1000-1500 lumens, Up/down 500-800 lumen <sup>(6)</sup></p> <p>1DMXC5=DMX/RDM Logarithmic Dimming, 0.1% to 100%, 120V, Up/down 1000 to 1500 lumens <sup>(6)</sup></p> <p>2DMXC5=DMX/RDM Logarithmic Dimming, 0.1% to 100%, 277V, Up/down 1000 to 1500 lumens <sup>(6)</sup></p> <p>3DMXC5=DMX/RDM Logarithmic Dimming, 0.1% to 100%, 347V step down transformer, 1000-1500 lumens, RJ45 Connection, Up/down 500-1500 lumens <sup>(6)</sup></p> <p>DLE=Lutron Ecosystem dimming 1% to 100%, 120-277V; 1000 to 1500 lumens, Up/down 250-800 lumen <sup>(12)</sup></p> <p>3DLE=Lutron Ecosystem dimming 1% to 100%, 347V step down transformer, 1000-1500 lumens, Up/down 250-800 lumen <sup>(12)</sup></p> <p>DLV=Low Voltage System, 1000 to 1500 lumens</p>

Options <sup>(31)</sup>	Controls <sup>(31)</sup>
<p>EMB0D=Bodine® Emergency Module with Remote Test Switch</p> <p>EMB0D6ST=Bodine® 6W Self Test Emergency Module with Remote Test Switch</p> <p>EM7=7W Emergency Module with Remote Test Switch</p> <p>EM14=14W Emergency Module with Remote Test Switch</p> <p>EMB0D7ST=Bodine® Self Test Emergency Module</p> <p>EMV7=7W Low Voltage Emergency Module with Remote Test Switch <sup>(21)</sup></p> <p>EMV14=14W Low Voltage Emergency Module with Remote Test Switch <sup>(21)</sup></p> <p>ETRD=Emergency transfer device <sup>(32)</sup></p>	<p>WPST=Factory installed Wavelinx (includes control module, sensor, cable, tile mount and ceiling mount sensor) <sup>(14) (28)</sup></p> <p>WLST=Factory installed WaveLinX Lite Sensor Kit <sup>(14) (27)</sup></p> <p>WPN = WaveLinX PRO Wireless Node without sensor <sup>(14) (34)</sup></p> <p>WLN = WaveLinX LITE Wireless Node without sensor <sup>(14) (37)</sup></p>

Domestic Preferences <sup>(30)</sup>	Accessories
[Blank]=Standard TAA= Trade Agreements Act	<p><b>Connected Lighting Systems</b> <sup>(14)</sup></p> <p>WPST=Field installed WaveLinX sensor Kit <sup>(28)</sup></p> <p>WLST=Field installed WaveLinX Lite Sensor <sup>(27)</sup></p> <p><b>Optics</b></p> <p>46R25=25°</p> <p>46R30=30°</p> <p>46R35=35°</p> <p>46R40=40°</p> <p>46R45=45°</p> <p>46R50=50°</p> <p>46R55=55°</p> <p>46R60=60°</p> <p>46R65=65°</p> <p>46R70=70°</p> <p><b>Color Filters</b> <sup>(38)</sup></p> <p>F22-20=Red</p> <p>F33-20=Blue</p> <p>F44-20=Green</p> <p>F55-20=Yellow</p> <p>F66-20=Mercury</p> <p><b>Dichronic Filters</b> <sup>(38)</sup></p> <p>F71-20=Peach</p> <p>F72-20=Amber</p> <p>F73-20=Green</p> <p>F74-20=Medium Blue</p> <p>F75-20=Yellow</p> <p>F76-20=Red</p> <p>F77-20=Dark Blue</p> <p>F78-20=Light Blue</p> <p>F79-20=Neutral Density</p> <p>F80-20=Magenta</p> <p><b>Beam-Modifying Lenses</b> <sup>(38)</sup></p> <p>LSL-20=Linear Spread Lens</p> <p>OSL-20=Overall Spread Lens</p> <p>DIF-20=Diffused Lens</p> <p><b>Asymmetric Film</b> <sup>(38)</sup></p> <p>46ASYMFILM=Asymmetric Film (<a href="#">see chart for distribution</a>)</p> <p><b>Louvers</b> <sup>(38)</sup></p> <p>LVR-20=Hex Cell Louver</p>

## Notes

- Requires square reflector
- Requires round reflector
- Requires two reflectors and light engines. Lumen specified for up/down is the same for both directions. Ex. 800 lumens will be 800 lumens up & 800 lumens down.
- For use with DE010 and D5LT drivers
- DMX fixtures default to full on upon loss of DMX signal
- Up down surface mount require 2 driver assemblies
- Order remote driver separately. See below to order.
- Consult factory for custom finishes.
- Only available up to 25 ft.
- Refer to system specifications for additional information, features, and benefits. Order either factory installed option or accessory. Use with 0-10V driver. WPN and WLN are factory installed only. For canopy mount only, for remote driver specify with remote driver.
- Nominal Lumens will vary depending on selected color, driver and reflector finish.

- Available only on spun aluminum trims
- Available only on cast reflector
- ULUS listed only
- WLST=WaveLinX Lite tile mount sensor kit for daylight dimming, PIR motion sensing, use with D010 only (Refer to WaveLinX Lite system specifications)
- WPST=WaveLinX wireless sensor kit for daylight dimming, PIR motion sensing, and optional RLTS - Real Time Location Services, use with 0-10V only
- To order product that is compliant with the Buy American Act of 1933 (BAA) or Trade Agreements Act (TAA), use the online specification configurator to specify BAA or TAA. Please refer to [DOMESTIC PREFERENCES LINK](#) for more information. Components shipped separately may be separately analyzed under domestic preference requirements. Accessories sold separately will be separately analyzed under domestic preference requirements.
- 120V-277V

- Used to bypass local control during outage. Must be used in conjunction with UL 1008 device (provided by others).
- Non-IC
- D010 800 to 3000 lumens. 250 and 500 lumens use step down transformer) All other drivers use step down transformer
- Offered with 25° and above distributions.
- WPN = WaveLinX PRO wireless node provides luminaire-level control with scene and zone configuration without an integrated sensor; Connects wirelessly with daylight dimming sensor and PIR motion sensor if desired. Use with 0-10V driver only.
- WLN = WaveLinX LITE wireless node provides luminaire-level control with scene and zone configuration without an integrated sensor; Connects wirelessly with daylight dimming sensor and PIR motion sensor if desired. Use with 0-10V driver only.
- Requires 2M designation on light engine.

## Product Specifications

### Lower Reflector

- Painted die-cast aluminum or spun aluminum reflector provides superior lumen output with minimal source brightness
- Square surface mount available with square or round reflectors
- Spun reflectors are available in all Portfolio finishes

### Optic

- Interchangeable silicone optic in 5° increments from 10°-70° providing smooth beam without color separation
- Available media holder fits onto optic holder and holds up to two lens media

### Trim retention

- Two torsion springs hold flange tightly to the cylinder lip

### Cylinder

- Round and soft square extruded aluminum
- Matte white, bronze, silver or matte black. Contact factory for custom finishes.
- Available in standard and shallow heights

### Mounting

- LuxWire™ provides low voltage power to the cylinder via aircraft cable
- Mounting plate installs to mounted junction box
- Cylinder mounts to plate with easy twist and lock hooks for ceiling mount
- Conduit canopy allows for mounting surface cylinder on hard ceilings provided in painted finish to match the cylinder accommodates ½" or ¾" conduit.

### Thermal

- Aluminum heat sink conducts heat away from the LED module for optical performance and longer life

### LED System

- Auto resetting, thermally protected, LED's are turned off when safe operating temperatures are exceeded
- Quick disconnect allows for tool-less replacement of LED engine from below ceiling
- 90 and 97 CRI
- 90 & 97CRI: L78 55,000 hours for 1000-2000 lumens, L90 55,000 for all other lumen output
- Color variation within 2-step MacAdam ellipses
- Available in 2400K, 2700K, 3000K, 3500K, 4000K and 5000K correlated color temperature (CCT)

### Vividthune and BioUp (Available Option)

- W2N: L70 55,000 hours
- D2W™ – dim-to-warm shifts CCT from 3000K to 1850K as fixture dims mimicking halogen sources.
- W2N - Tunable white CCT range 2700K to 6500K or 2000K to 5000K, 90 CRI. Standard
- See dedicated specification sheet for more details.

### Driver

- Standard 120-277V 0-10V dimming driver provides flicker-free dimming from 100% to 1%
- Optional 120V leading edge, <1% 0-10V, Fifth Light, DMX or Lutron®
- Remote driver option up to 100' based on driver selection
- Distributed low voltage power system combines power, lighting, and controls with ease of installation.

### Emergency Option

- Provides 90 minutes of standby lighting, meeting most life safety codes for egress lighting
- Available Self-Test (self-diagnostic) with remote charge indicator and test switch
- Emergency Transfer Relay Device bypasses local control during a power outage
- UL 924 listed

### Connected Lighting System

Two WaveLinX connected solutions to choose from. Refer to WaveLinX system specifications and application guides for details.

#### WaveLinX PRO Tilemount Sensor Kit

- WaveLinX PRO WPST tilemount sensor kit offers daylight dimming, PIR motion sensing, scene and zone configuration, automatic commissioning; and optional RLTS - Real Time Location Services available.

#### WaveLinX PRO Wireless Node

- WaveLinX PRO WPN wireless node provides luminaire-level control with scene and zone configuration without an integrated sensor; Connects wirelessly with daylight dimming sensor and PIR motion sensor if desired. Use with 0-10V driver only. **Note:** Not compatible with 347V or Chicago plenum.

#### WaveLinX LITE Tilemount Sensor Kit

- WaveLinX LITE WLST tilemount sensor kit offers daylight dimming and PIR motion sensing, scene and grouping configuration.

#### WaveLinX LITE Wireless Node

- WaveLinX LITE WLN wireless node provides luminaire level control with scene and zone configuration without an integrated sensor; Connects wirelessly with daylight dimming sensor and PIR motion sensor if desired. Use with 0-10V driver only. **Note:** Not compatible with 347V or Chicago plenum.

#### WaveLinX Tilemount Sensor Kits Application

- The WPST and WLST tilemount sensor kits include a control module mounted on the luminaire junction box via 1/2" knock-out, and a tilemount sensor on 54-inch whip; for ceiling installation by direct-mount spring clips or via mounting bracket in octagon ceiling boxes.
- The WPST and WLST tilemount sensor kits may be ordered as factory installed on the luminaire, or ordered separately as a field installed accessory kit.
- **Note: WaveLinX PRO devices are only compatible with the WaveLinX PRO system.**
- **Note: WaveLinX LITE devices are only compatible with the WaveLinX LITE system.**

#### Compliance

- cULus Certified to UL 1598 / Canada C22.2 No. 250.0
- EMI/RFI emissions per FCC 47CFR Part 18 Class B consumer limits
- RoHS compliant
- Photometric testing completed in accordance with IES LM-79
- LED life testing completed in accordance with IES LM-80 standards

#### Warranty

- Five year warranty [www.cooperlighting.com/legal](http://www.cooperlighting.com/legal)

## Energy and Performance Data

## D010 DRIVER ENERGY DATA

Series	250 Lumen		500 Lumen		750 Lumen		1000 Lumen		1500 Lumen	
Input Voltage 120-277 VAC	120	277	120	277	120	277	120	277	120	277
Input Current (A)	0.029	0.017	0.054	0.027	0.065	0.031	0.09	0.045	0.129	0.057
Input Power (W)	3.4	3.9	6.5	6.9	7.7	8.1	10.7	11.1	15.5	15.4
In-rush (A)	2.1	9.15	2.1	9	2.1	9	2.1	9.1	2.1	9.3
Inrush duration	250	127	254	128	249	142	255	153	255	236
THDi (%)	8.2	19.9	7.8	14	8.1	11.2	6.6	9.7	11.5	6.6
PF	0.99	0.83	0.99	0.91	0.99	0.93	1.0	0.97	0.99	0.98

Minimum starting temperature -30°C (-22°F)\*  
(Nominal input 120-277VAC & 100% of rated output power)

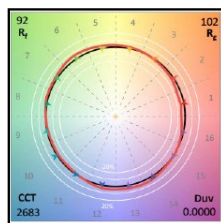
Sound Rating: Class A standards

**Notes:**

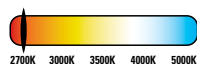
Emergency Battery packs are rated for a minimum starting temperature of 0°C.

## COLOR METRICS - TM-30-15 &amp; CRI/CIE

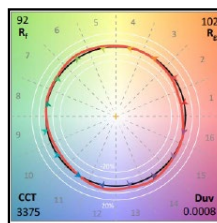
## 90 CRI Color Metric Summary - 2700K\*



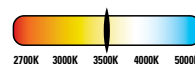
TM-30-15	Rf = 92.1
	Rg = 101.6
CRI/CIE	Ra = 93.8
	R9 = 59.7



## 90 CRI Color Metric Summary - 3500K\*



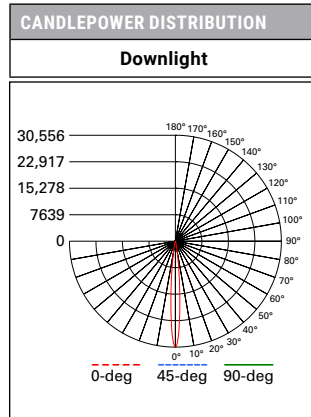
TM-30-15	Rf = 91.9
	Rg = 101.6
CRI/CIE	Ra = 93.0
	R9 = 62.8



\* Color values are based on haze reflector, other finishes and field results may vary.

## Photometric Data

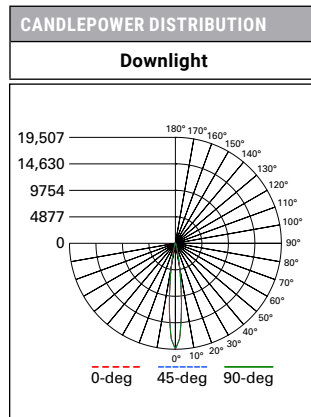
10° with 4LBS reflector	
Test Number	P735992
Housing	LE*4D15D010
Module	EC4DR1015209035
Lumens	1403
Efficacy	88.8 Lm/W
SC	0.17
UGR	10



CONE OF LIGHT			
D	FC	L	W
6'	848.8	0.8	0.8
8'	477.4	1.2	1.2
10'	305.6	1.6	1.6
12'	212.2	1.8	1.8
15'	135.8	2.4	2.4

CANDELA TABLE	
Degrees Vertical	0-deg
0	30556
5	14434
15	788
25	160
35	56
45	21
55	7
65	0
75	0
80	0

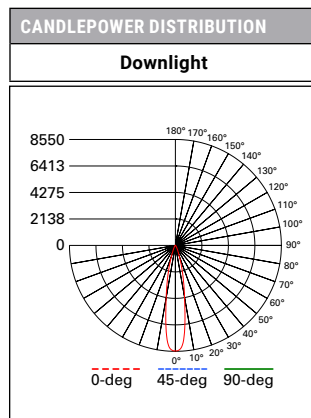
15° with 4LBS reflector	
Test Number	P735994
Housing	LE*4D15D010
Module	EC4DR1015209035
Lumens	1432
Efficacy	90.6 Lm/W
SC	0.22
UGR	10



CONE OF LIGHT			
D	FC	L	W
6'	541.9	1.2	1.2
8'	304.8	1.6	1.6
10'	195.1	2.2	2.2
12'	135.5	2.6	2.6
15'	86.7	3.2	3.2

CANDELA TABLE	
Degrees Vertical	0-deg
0	19507
5	12692
15	1102
25	130
35	26
45	12
55	8
65	5
75	2
80	2

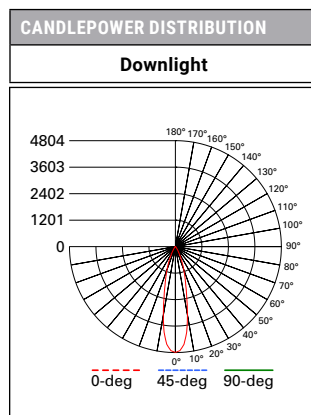
20° with 4LBS reflector	
Test Number	P735996
Housing	LE*4D15D010
Module	EC4DR1015209035
Lumens	1502
Efficacy	95.1 Lm/W
SC	0.34
UGR	10



CONE OF LIGHT			
D	FC	L	W
6'	237.5	2	2
8'	133.6	2.6	2.6
10'	85.5	3.4	3.4
12'	59.4	4	4
15'	38	5	5

CANDELA TABLE	
Degrees Vertical	0-deg
0	8550
5	7685
15	2126
25	390
35	100
45	27
55	7
65	2
75	0
80	0

25° with 4LBS reflector	
Test Number	P735998
Housing	LE*4D15D010
Module	EU4DR250215IC9035
Trim	4LBS1MW
Lumens	1267
Efficacy	80.2 Lm/W
SC	0.42
UGR	10



CONE OF LIGHT			
D	FC	L	W
6'	133.5	2.4	2.4
8'	75.1	3.2	3.2
10'	48	4.2	4.2
12'	33.4	5	5
15'	21.4	6.2	6.2

CANDELA TABLE	
Degrees Vertical	0-deg
0	4804
5	4458
15	1816
25	582
35	91
45	21
55	5
65	2
75	0
80	0

## Photometric Data

30° with 4LBS reflector	
Test Number	P736000
Housing	LE*4D15D010
Module	EU4DR300215IC9035
Trim	4LBS1MW
Lumens	1385
Efficacy	87.7 Lm/W
SC	0.52
UGR	10

CANDLEPOWER DISTRIBUTION	
Downlight	

CONE OF LIGHT			
D	FC	L	W
6'	123.7	3	3
8'	69.6	4	4
10'	44.5	5.2	5.2
12'	30.9	6.2	6.2
15'	19.8	7.8	7.8

CANDELA TABLE	
Degrees Vertical	0-deg
0	4454
5	4310
15	2362
25	555
35	93
45	24
55	4
65	1
75	0
80	0

|  | | | |

35° with 4LBS reflector	
Test Number	P736002
Housing	LE*4D15D010
Module	EU4DR350215IC9035
Trim	4LBS1MW
Lumens	1355
Efficacy	85.8 Lm/W
SC	0.6
UGR	10

CANDLEPOWER DISTRIBUTION	
Downlight	

CONE OF LIGHT			
D	FC	L	W
6'	103.6	3.4	3.4
8'	58.2	4.6	4.6
10'	37.3	5.8	5.8
12'	25.9	7	7
15'	16.6	8.8	8.8

CANDELA TABLE	
Degrees Vertical	0-deg
0	3728
5	3627
15	2460
25	509
35	94
45	32
55	12
65	3
75	0
80	0

|  | | | |

40° with 4LBS and 4LBDP reflector	
Test Number	P736004
Housing	LE*4D15D010
Module	EU4DR400215IC9035
Trim	4LBS1MW
Lumens	1480
Efficacy	93.7 Lm/W
SC	0.68
UGR	10

CANDLEPOWER DISTRIBUTION	
Downlight	

CONE OF LIGHT			
D	FC	L	W
6'	95.7	4	4
8'	53.8	5.4	5.4
10'	34.5	6.6	6.6
12'	23.9	8	8
15'	15.3	10	10

CANDELA TABLE	
Degrees Vertical	0-deg
0	3446
5	3416
15	2661
25	710
35	94
45	20
55	4
65	1
75	0
80	0

|  | | | |

45° with 4LBS reflector	
Test Number	P736006
Housing	LE*4D15D010
Module	EU4DR450215IC9035
Trim	4LBS1MW
Lumens	1451
Efficacy	91.8 Lm/W
SC	0.75
UGR	10

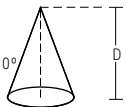
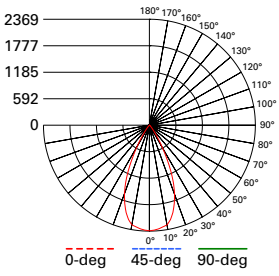
CANDLEPOWER DISTRIBUTION	
Downlight	

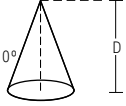
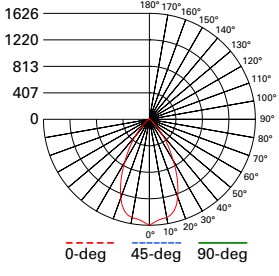
CONE OF LIGHT			
D	FC	L	W
6'	71.3	4.4	4.4
8'	40.1	5.8	5.8
10'	25.7	7.4	7.4
12'	17.8	8.8	8.8
15'	11.4	11.2	11.2

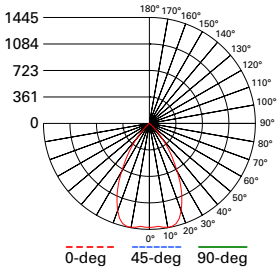
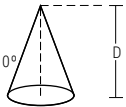
CANDELA TABLE	
Degrees Vertical	0-deg
0	2565
5	2482
15	2108
25	980
35	219
45	35
55	7
65	1
75	0
80	0

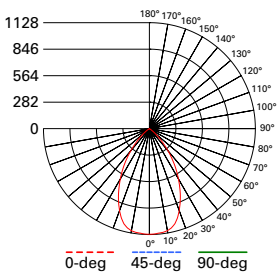
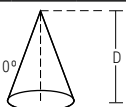


## Photometric Data

50° with 4LBS reflector		CANDLEPOWER DISTRIBUTION		CONE OF LIGHT		CANDELA TABLE	
Test Number	P736008	Downlight				Degrees Vertical	0-deg
Housing	LE*4D15D010			D	FC	L	W
Module	EU4DR500215IC9035						
Trim	4LBS1MW						
Lumens	1471						
Efficacy	93.1 Lm/W						
SC	0.8	6'	65.8	4.6	4.6		
UGR	10	8'	37	6.2	6.2		
		10'	23.7	7.8	7.8		
		12'	16.5	9.4	9.4		
		15'	10.5	11.8	11.8		

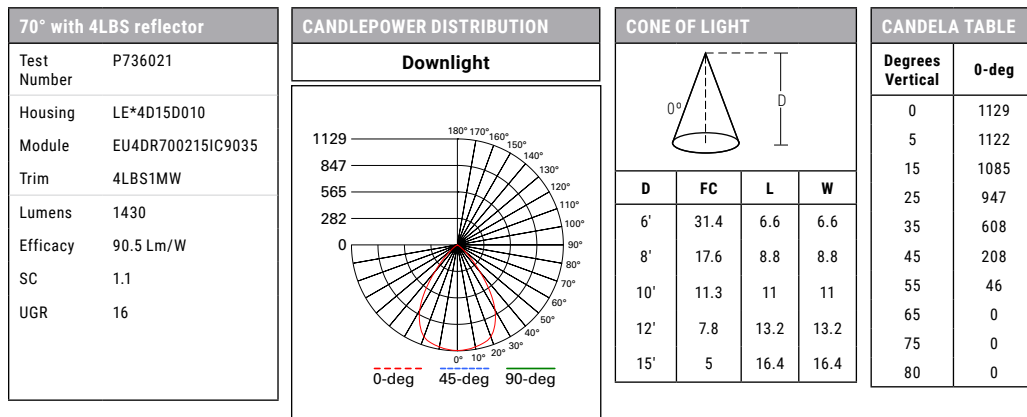
55° with 4LBS reflector		CANDLEPOWER DISTRIBUTION		CONE OF LIGHT		CANDELA TABLE	
Test Number	P736010	Downlight				Degrees Vertical	0-deg
Housing	LE*4D15D010			D	FC	L	W
Module	EU4DR550215IC9035						
Trim	4LBS1MW						
Lumens	1450						
Efficacy	91.8 Lm/W						
SC	0.89	6'	45.2	5.2	5.2		
UGR	13	8'	25.4	7	7		
		10'	16.3	8.8	8.8		
		12'	11.3	10.6	10.6		
		15'	7.2	13.2	13.2		

60° with 4LBS reflector		CANDLEPOWER DISTRIBUTION		CONE OF LIGHT				CANDELA TABLE		
Test Number	P736013	Downlight						Degrees Vertical	0-deg	
Housing	LE*4D15D010				D	FC	L	W	0	1423
Module	EU4DR600215IC9035				6'	39.5	5.8	5.8	5	1414
Trim	4LBS1MW				8'	22.2	7.8	7.8	15	1418
Lumens	1422				10'	14.2	9.8	9.8	25	1042
Efficacy	90 Lm/W			12'	9.9	11.6	11.6	35	507	
SC	0.98			15'	6.3	14.6	14.6	45	104	
UGR	13							55	14	
								65	1	
								75	0	
								80	0	

65° with 4LBS reflector		CANDLEPOWER DISTRIBUTION		CONE OF LIGHT				CANDELA TABLE		
Test Number	P736017	Downlight						Degrees Vertical	0-deg	
Housing	LE*4D15D010				D	FC	L	W	0	1128
Module	EU4DR650215IC9035				6'	31.3	5.6	5.6	5	1121
Trim	4LBS1MW				8'	17.6	7.6	7.6	15	1053
Lumens	1242				10'	11.3	9.4	9.4	25	784
Efficacy	78.6 Lm/W			12'	7.8	11.4	11.4	35	467	
SC	0.95			15'	5	14.2	14.2	45	184	
UGR	14							55	41	
								65	9	
								75	2	
								80	1	



## Photometric Data



## Photometric Multipliers (Nominal Lumen Values)

250 Lumen	500 Lumen	800 Lumen	1000 Lumen	1500 Lumen	2000 Lumen	2500 Lumen	3000 Lumen	3500 Lumen	4000 Lumen	4500 Lumen
0.26	0.47	0.56	0.74	1.00	1.37	1.77	1.99	1.31	1.54	1.68

5000 Lumen	5500 Lumen	6000 Lumen	6500 Lumen	7000 Lumen	7500 Lumen	8000 Lumen	8500 Lumen	9000 Lumen	9500 Lumen
1.98	2.23	2.46	2.72	2.77	2.93	3.11	3.31	3.51	3.60

Multipliers for relative lumen values with other series models.

## CCT Multipliers – 90CRI

2400K	2700K	3000K	3500K	4000K	5000K
0.81	0.92	0.92	0.96	1	1.01

Multipliers for relative lumen values with other series color temperatures.

## CCT Multipliers – 97CRI

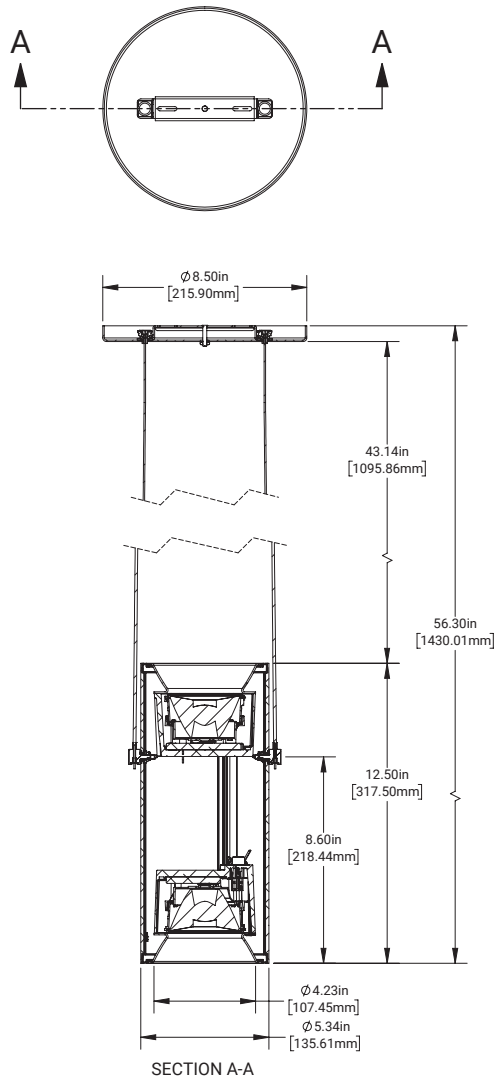
2700K	3000K	3500K	4000K	5000K
0.88	0.95	1	1.016	1.07

Multipliers for relative lumen values with other series color temperatures.

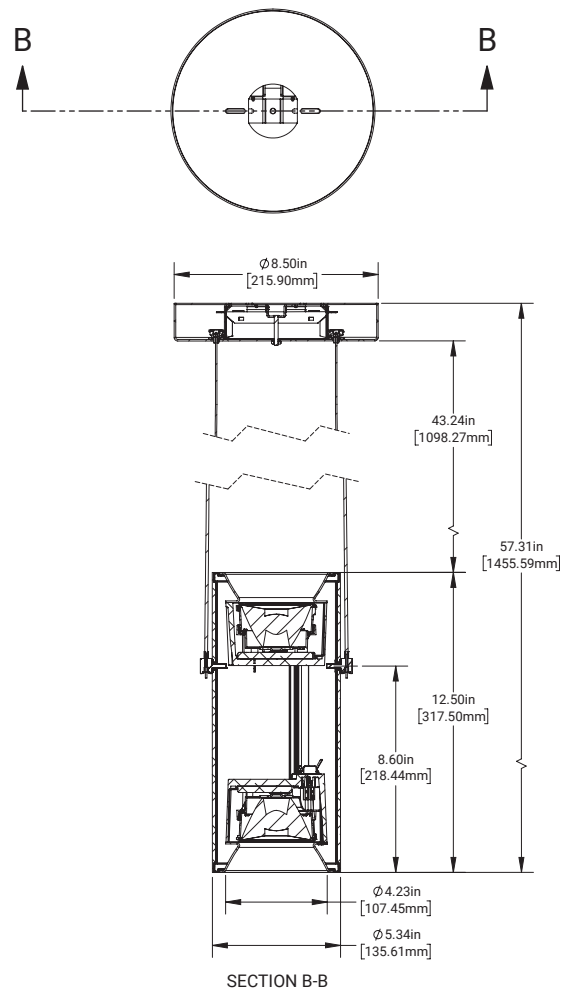
## Asymmetric Film Distribution

TIR	Short Axis Beam angle	Long Axis Beam angle
R10	12°	27.4°
R15	15°	28°
R20	21°	32°
R30	32°	37°
R35	32°	40°
R40	28°	37°
R45	41°	45°
R50	42°	46°

## Dimensional and Mounting Details

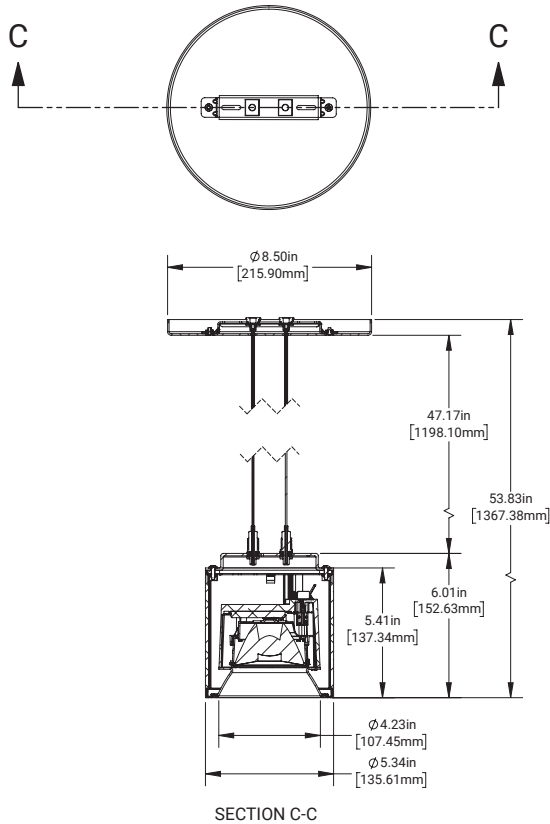


4IN ROUND CYLINDER SHALLOW POWER CORD  
UP DOWN PENDANT DRIVER -LL-4LBS02

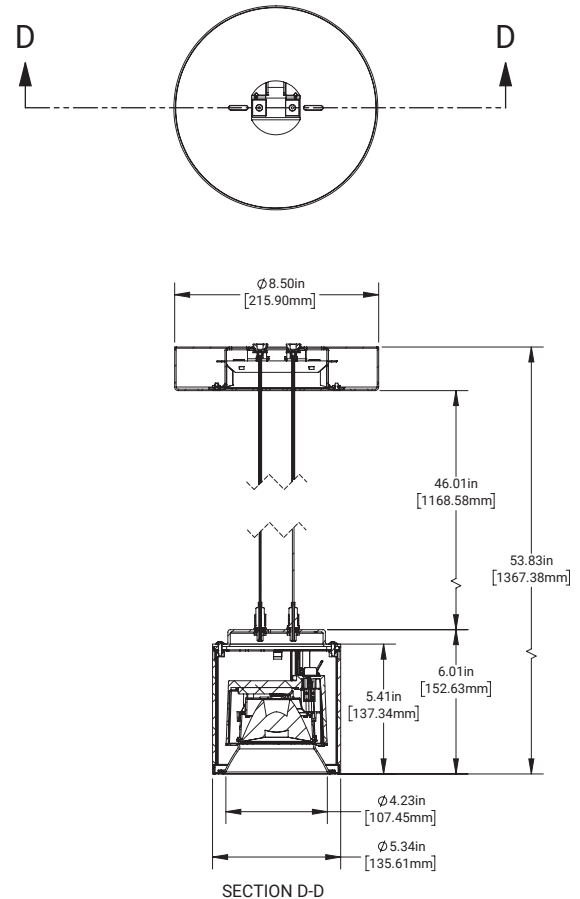


4IN ROUND CYLINDER SHALLOW POWER CORD  
UP DOWN PENDANT DRIVER -LL-4LBS02

## Dimensional and Mounting Details

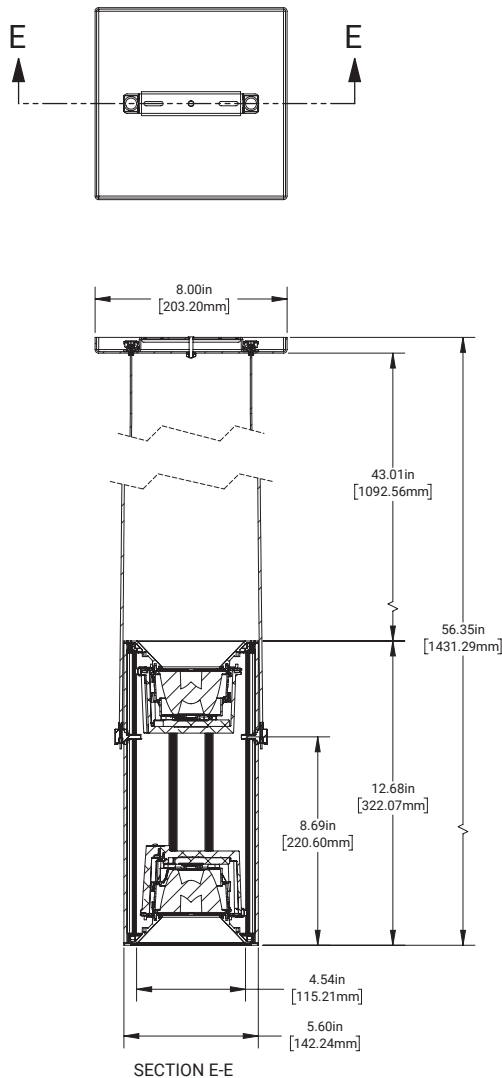


4IN ROUND CYLINDER POWER CORD  
PENDANT- SHALLOW

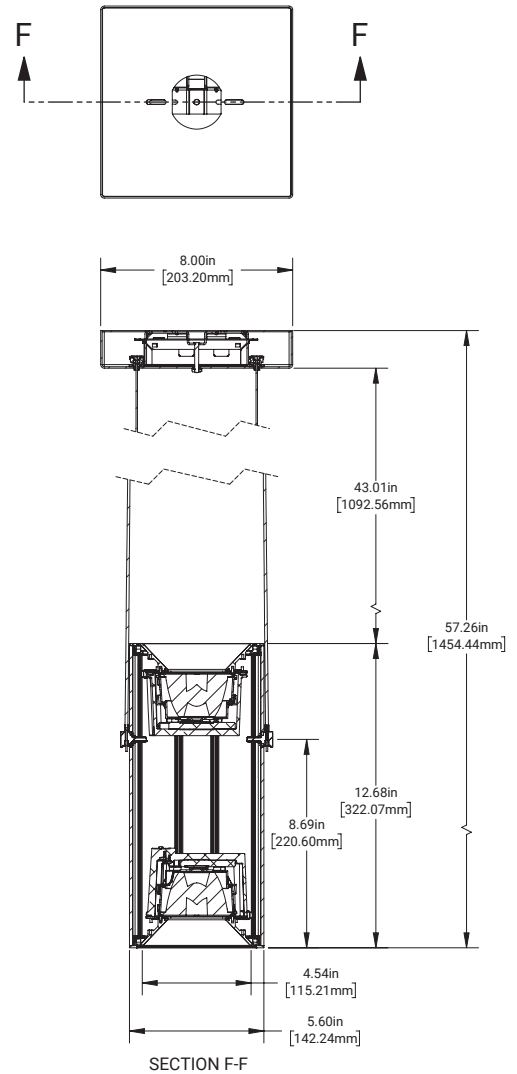


4IN ROUND CYLINDER POWER CORD  
PENDANT DRIVER- SHALLOW

## Dimensional and Mounting Details

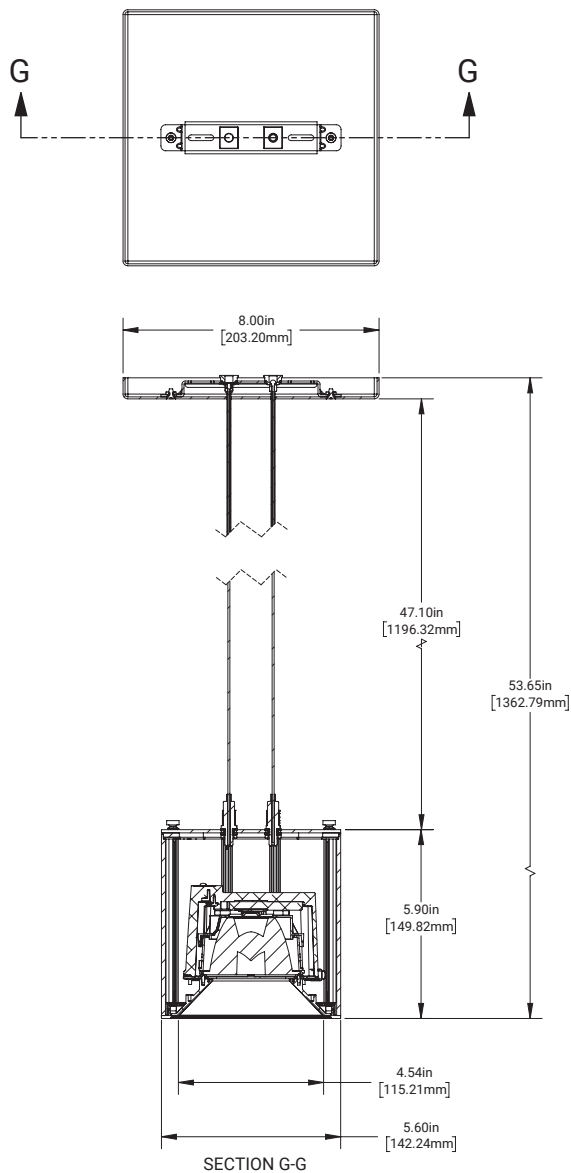


4IN SQUARE CYLINDER STANDARD POWER CORD  
UP DOWN PENDANT-SHALLOW

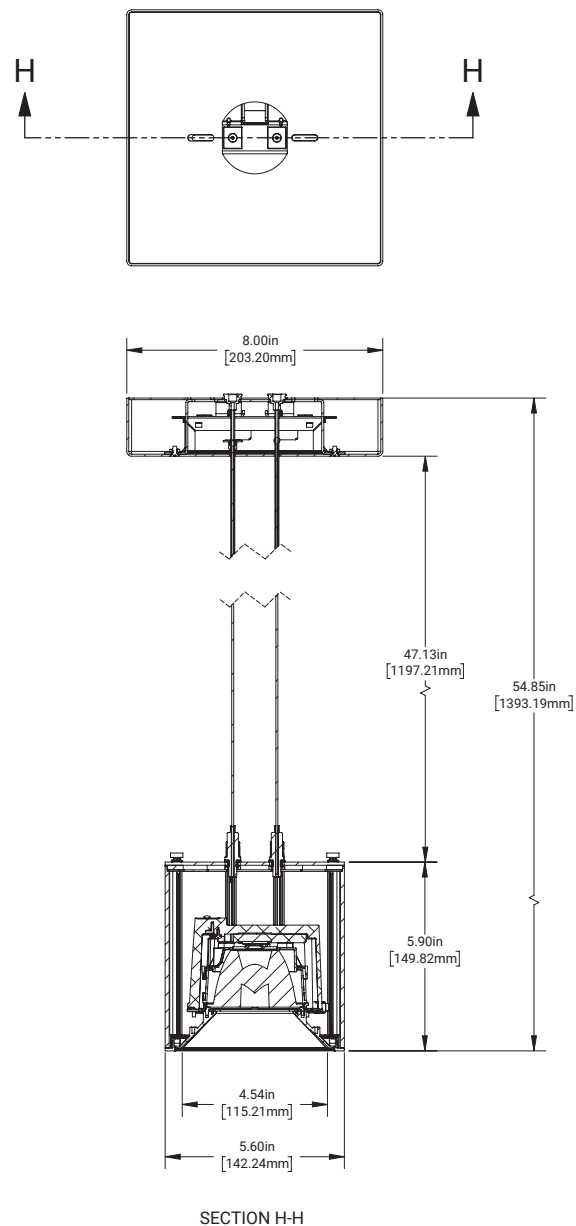


4IN SQUARE CYLINDER STANDARD POWER CORD  
UP DOWN PENDANT DRIVE-SHALLOW

## Dimensional and Mounting Details



4IN SQUARE CYLINDER  
POWER CORD PENDANT-SH



4IN SQUARE CYLINDER  
POWER CORD PENDANT DRIVER

## Connected Systems

### WaveLinX LITE - WLST Tilemount Sensor

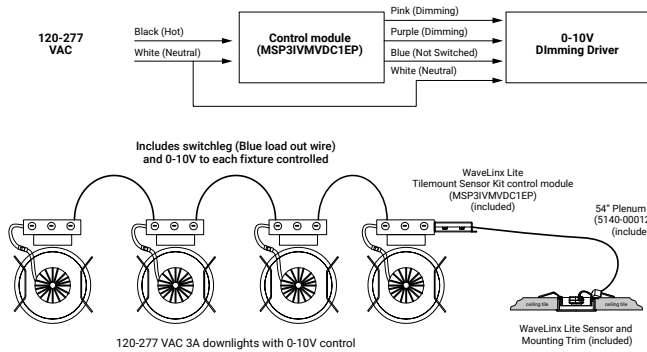
WaveLinX LITE devices only compatible with the WaveLinX LITE system.



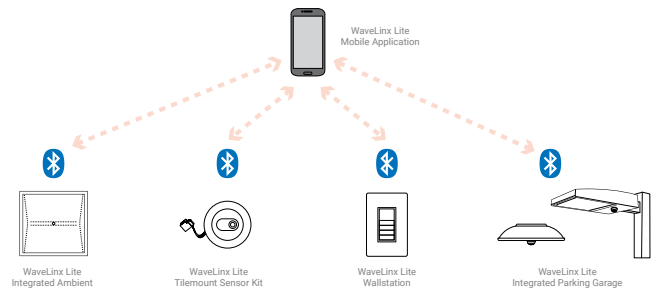
- Intuitive Android™ or Apple® iOS® app for basic system code compliant set up and configuration via Bluetooth
- Up to 28 unique areas per project site (WaveLinX LITE Bluetooth network)
- Up to 50 devices for an area, any one of 16 control zones, up to 6 occupancy sets, and custom lighting scenes
- Automatic occupancy or vacancy, sensor sensitivity, daylight dimming, etc. configurable through the app
- Refer to the WaveLinX system specifications for details



#### WaveLinX LITE WLST Tilemount Wiring Diagram



#### WaveLinX LITE Bluetooth Enabled System



### WaveLinX PRO Wireless – WPST Tilemount Sensor

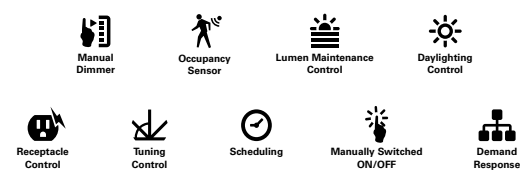
WaveLinX PRO devices only compatible with the WaveLinX PRO system.



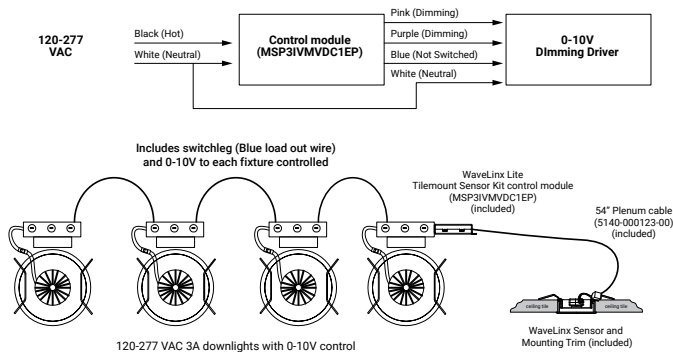
- WaveLinX PRO Wireless functionality configures zones and customizes settings from one secure mobile app
- Automatic code commissioning that meets the strictest codes
- Fixtures and sensors integrate with Wireless Area Controller, Wall Stations, and Control Devices
- Stand-Alone Offices or Entire Building Network Installations



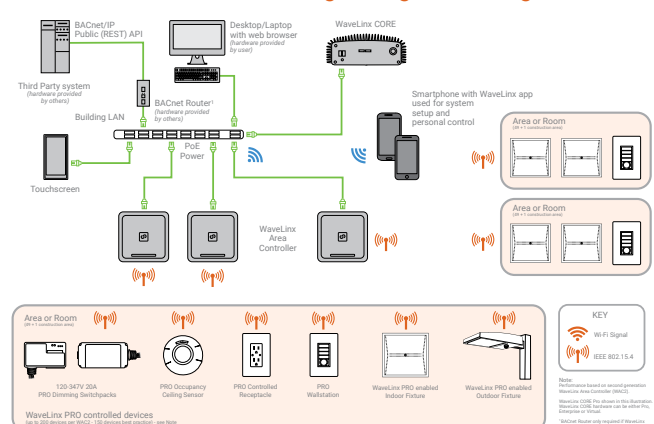
#### WaveLinX mobile app settings



#### WaveLinX PRO WPST Tilemount Wiring Diagram



#### WaveLinX CORE Building Management Integration



## Connected Solutions



### WaveLinX LITE Wireless Node - WLN

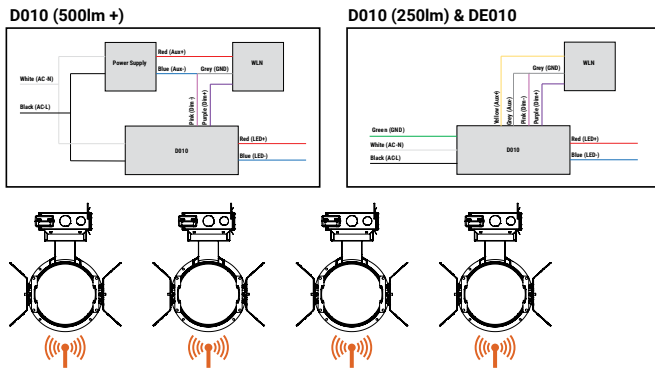
**WaveLinX LITE devices only compatible with the WaveLinX LITE system.**

- Intuitive Android™ or Apple® iOS® app for basic system code compliant set up and configuration via Bluetooth
- Up to 28 unique areas per project site (WaveLinX LITE Bluetooth network)
- Up to 50 devices for an area, any one of 16 control zones, up to 6 occupancy sets, and custom lighting scenes
- Refer to the WaveLinX system specifications for details
- **Not available with BioUp or Tunable White**

#### WaveLinX mobile app settings

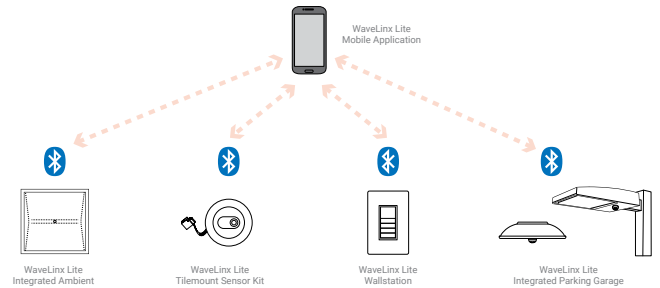


#### WaveLinX LITE Wireless Node (WLN) Wiring Diagram



120-277 VAC 3A downlights with 0-10V control

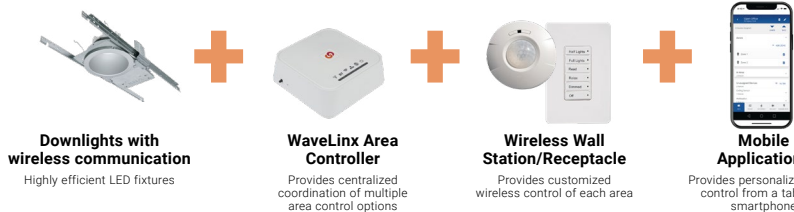
#### WaveLinX LITE Bluetooth Enabled System



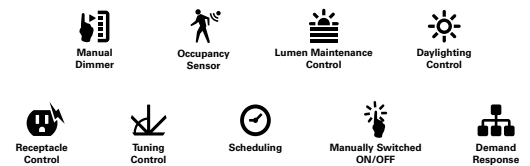
### WaveLinX PRO Wireless Node - WPN

**WaveLinX PRO devices only compatible with the WaveLinX PRO system.**

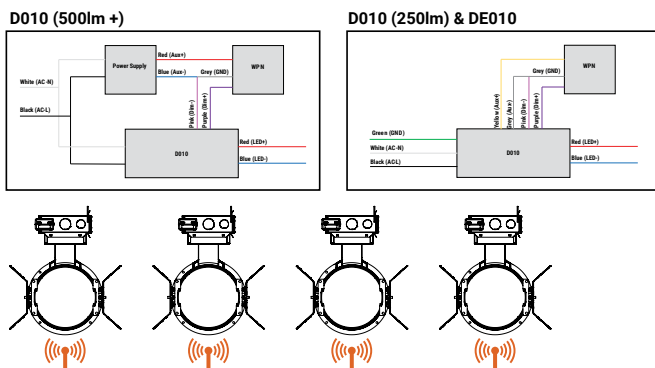
- WaveLinX Wireless functionality configures zones and customizes settings from one secure mobile app
- Automatic code commissioning that meets the strictest codes
- Fixtures and sensors integrate with WaveLinX Area Controller, Wall Stations, and Control Devices
- Stand-Alone Offices or Entire Building Network Installations



#### WaveLinX mobile app settings



#### WaveLinX PRO Wireless Node (WPN) Wiring Diagram



120-277 VAC 3A downlights with 0-10V control

#### WaveLinX CORE Building Management Integration

