

Project		Catalog #		Type	
Prepared by		Notes		Date	



Portfolio

LER6D/LESQ6D Cylinders - Full Spectrum

6" Round and Square Cylinder with high center beam optics
Surface, Ceiling, Wall, Up/Down, Yoke, Stem and Air Craft Cable Mount

Typical Applications Office • Education • Healthcare • Hospitality • Retail • Code-Compliance Areas • Sports Venues

Interactive Menu

- Order Information page 2
- Product Specifications page 4
- Energy Data page 5
- Connected Systems page 10
- Product Warranty

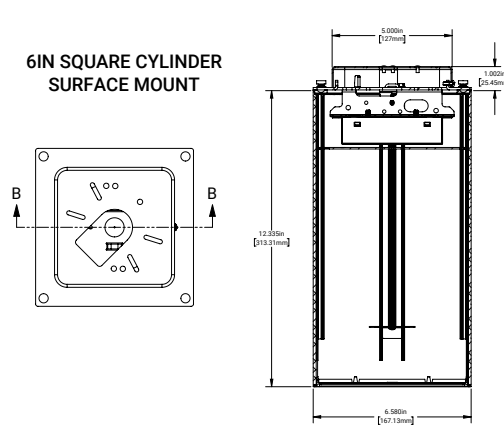
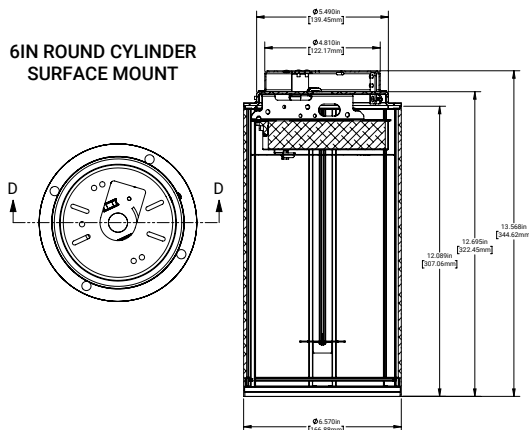


Top Product Features

- 250 to 4500 lumens
- Interchangeable optics in 5° increments from 25°-70°; Optional media holder accepts two lens media
- Extruded aluminum housing; Matte Black, White, Bronze and Silver paint finishes, custom finishes available
- 5 color temperatures: 2700K, 3000K, 3500K, 4000K and 5000K CCT
- 98 CRI
- Options to meet Trade Agreements Act requirements

Dimensional and Mounting Details

additional product diagrams



Order Information

SAMPLE ORDER NUMBER: LER6D10FSD010TRP

Domestic Preferences ⁽⁹⁰⁾	Cylinder	Lumens	Color Control	Driver	Remote ⁽⁸⁾	Finish ⁽¹⁰⁾	Factory Installed Options
[Blank] =Standard BAA =Buy American Act TAA = Trade Agreements Act	Ceiling surface mount LER6D =6-inch round surface mount LESQ6D = 6-inch square surface mount square aperture ⁽¹⁾ LESQR6D = 6-inch square surface mount round aperture ⁽²⁾ Ceiling surface mount Square with conduit canopy (for round use Conduit Canopy Kit accessory) LESQSM6D = 6-inch square surface mount square aperture with surface mount conduit canopy ⁽¹⁾ LESQRSM6D = 6-inch square surface mount, round aperture with surface mount conduit canopy ⁽²⁾ Wall mount Downlight LERWM6D = 6-inch round wall mount LESQRWM6D = 6-inch square wall mount round aperture ⁽²⁾ LESQWM6D = 6-inch square wall mount square aperture ⁽¹⁾ Wall mount Up/down ^{(23) (37)} LERUD6D = 6-inch round wall mount up/down ^{(4) (36)} LESQUD6D = 6-inch square wall mount up/down square aperture ^{(3) (36)} LESQRUD6D = 6-inch square wall mount up/down round aperture ^{(4) (36)} Yoke mount LERYM6D = 6-inch round yoke mount ⁽²⁴⁾ LESQYM6D = 6-inch square yoke mount square aperture ^{(1) (24)} LESQRYM6D = 6-inch square yoke mount round aperture ^{(2) (24)}	02 =250 lumens 05 =500 lumens 08 =800 lumens 10 =1000 lumens 15 =1500 lumens 20 =2000 lumens 25 =2500 lumens 30 =3000 lumens 35 =3500 lumens 40 =4000 lumens 45 =4500 lumens	FS =Full spectrum (Thrive)	D010 =0-10V Dimming, 1% to 100%, 120V-277V, 500-2500 lumens (500-4500 lumens for remote driver) 3D010 =0-10V Dimming, 1% to 100%, 347V dedicated drivers, 800-3000 lumens; 500, and 3500 and above use step down transformer with remote driver D010TR =0-10V or Line Voltage Dimming, 1% to 100%, 120-277V, 250-2500 lumens (250-4500 lumens for remote driver) DE010 =0-10V Linear Dimming, 0.1% to 100%, 120V-277V, 500 to 2500 lumens (500-4500 lumens for remote driver) D5LT =Fifth Light® (DALI T6) Logarithmic Dimming, 0.1% to 100%, 120V-277V, 500-2500 lumens (500-4500 lumens for remote driver) DMX =DMX/RDM Logarithmic Dimming, 0.1% to 100%, 120V-277V, 800-2500 lumens (800-4500 lumens for remote driver) ⁽⁶⁾ DMXC5 =DMX/RDM Logarithmic Dimming, 0.1% to 100%, 120V-277V, RJ45 Connection, 800-2500 lumens (800-4500 lumens for remote driver) ⁽⁶⁾ DLE =Lutron Ecosystem dimming 1% to 100%, 120V-277V, 800-2500 lumens (800-4500 lumens for remote driver) ⁽¹²⁾ DLV =Low voltage dimming driver (1-100%) for use with DLVP system, 800-2000 lumens (800-1000 lumens for remote driver)	blank =Integral driver R =Remote driver ⁽⁹⁾	P =White MB =Matte Black SL =Silver BZ =Bronze	WPN = WaveLinX PRO Wireless Node without sensor ^{(14) (38)} WLN = WaveLinX LITE Wireless Node without sensor ^{(14) (39)} IEMB06ST = Bodine® 6W Self Test Emergency Module with Integral Test Switch (requires EM6 trim option) • DP & S: limited to 3000 lumens • SQW: limited to 1500 lumens

SAMPLE ORDER NUMBER: EC6DR2510259835

Domestic Preferences ⁽³⁰⁾	Power Module	Optics	Lumen Levels ⁽¹⁵⁾	CRI	Color	Media ⁽⁴¹⁾
[Blank] =Standard BAA =Buy American Act TAA = Trade Agreements Act	EC6D =6-inch Universal LED Module	X =No optic order separately R25 =25° R30 =30° R35 =35° R40 =40° R45 =45° R50 =50° R55 =55° R60 =60° R65 =65° R70 =70°	98 CRI THRIVE LED 0208 =250, 500 and 800 lumens 98 CRI 1025 =1000, 1500, 2000 and 2500 lumens, 98 CRI 3045 =3000, 3500, 4000 and 4500 lumens	98 =98CRI Minimum	98 CRI 27 =2700K 30 =3000K 35 =3500K 40 =4000K 50 =5000K	Blank =Engine accepts optic only (preferred if media will not be used) 2M =Engine accepts up to 2 lenses or media (optic is recessed in engine)

SAMPLE ORDER NUMBER: 6LBDP3LI

Domestic Preferences ⁽³⁰⁾	Trim	Reflector	Finish	Options
[Blank] =Standard BAA =Buy American Act (S3 spun trim only)	6LB =6" Reflector	DP3 =45° Cutoff Downlight ⁽¹³⁾ S3 =Shallow Downlight CS3 =Cast Shallow Downlight Square (for use with LESQUD, LESQ) SQW3 = 45° Cutoff Anodized Aluminum Downlight ⁽¹³⁾ CSSQ3 =Shallow Die Cast Aluminum	LI =Specular Clear ⁽¹⁷⁾ H =Semi-Specular Clear ⁽¹⁷⁾ WMH =Warm Haze ⁽¹⁷⁾ WH =Wheat ⁽¹⁷⁾ GPH =Graphite Haze ⁽¹⁷⁾ B =Specular Black ⁽¹⁷⁾ MW =Matte White MB =Matte Black ⁽¹⁸⁾ MMS =Matte Metallic Silver ⁽¹⁸⁾	EM6 =Integral Emergency Test Switch Hole ⁽¹⁹⁾ For use with: • DP (not for use with LI or WH): up to 800 lumens • S: up to 800 lumens • SQW: up to 800 lumens

Order Information

REQUIRED if Remote Driver (R) is specified on Cylinder

Domestic Preferences ⁽³⁰⁾	Remote Drivers ⁽³⁰⁾	Lumens	Color Control	Voltage	Driver
[Blank]=Standard TAA= Trade Agreements Act	RD100=Remote 100 ft RD75= Remote 75 ft RD50= Remote 50 ft RD25= Remote 25 ft RD15= Remote 15 ft RD5= Remote 5 ft RD2= Remote 2 ft	02=250 lumens 05=500 lumens 08=800 lumens 10=1000 lumens 15=1500 lumens 20=2000 lumens 25=2500 lumens 30=3000 lumens 35=3500 lumens 40=4000 lumens 45=4500 lumens	FS=Full spectrum (Thrive)	[Blank]=120-277V (up to 1000 lumens) 1=120V (1500-4500 lumens) 2=277V (1500-4500 lumens) 3=347V ⁽³⁴⁾	D010=0-10V Dimming, 1% to 100%, 120V-277V, 500-4500 lumens 3D010=0-10V Dimming, 1% to 100%, 347V dedicated drivers, 800-3000 lumens; 250, 500, and 3500 and above use step down transformer with remote driver D010TR=0-10V or Line Voltage Dimming, 1% to 100%, 120-277V, 250-4500 lumens DE010=0-10V Linear Dimming, 0.1% to 100%, 120V-277V, 500-4500 lumens D5LT=Fifth Light® (DALI T6) Logarithmic Dimming, 0.1% to 100%, 120V-277V, 500-4500 lumens DMX=DMX/RDM Logarithmic Dimming, 0.1% to 100%, 120V-277V, 800-4500 lumens ⁽⁴⁾ DMXC5=DMX/RDM Logarithmic Dimming, 0.1% to 100%, 120V-277V, RJ45 Connection, 800-4500 lumens ⁽⁴⁾ DLE=Lutron Ecosystem dimming 1% to 100%, 120V-277V, 800-4500 lumens ⁽³²⁾ DLV=Low voltage dimming driver (1-100%) for use with DLVP system, 800-1000 lumens

Options ^{(31) (33)}	Controls ^{(31) (33)}
EMB0D=Bodine® 7W Emergency Module with Remote Test Switch EMB0D6ST=Bodine® 6W Self Test Emergency Module with Remote Test Switch EM7=7W Emergency Module with Remote Test Switch EM14=14W Emergency Module with Remote Test Switch EMB0D7ST=Bodine® Self Test Emergency Module EMV7=7W Low Voltage Emergency Module with Remote Test Switch ⁽²¹⁾ EMV14=14W Low Voltage Emergency Module with Remote Test Switch ⁽²¹⁾ ETRD=Emergency transfer device ⁽³²⁾	WPST=Factory installed Wavelinx (includes control module, sensor, cable, tile mount and ceiling mount sensor) ^{(14) (28)} WLST=Factory installed WaveLinX Lite Sensor Kit ^{(14) (27)} WPN = WaveLinX PRO Wireless Node without sensor ^{(14) (38)} WLN = WaveLinX LITE Wireless Node without sensor ^{(14) (39)}

Domestic Preferences ⁽³⁰⁾	Accessories ⁽³⁵⁾	Type	Lengths
[Blank]=Standard TAA= Trade Agreements Act BAA=Buy American Act	Pendant Kit ^{(20) (22)} P836P=White pendant stem kit for suspended mount cylinder P836BZ=Bronze pendant stem kit for suspended mount cylinder P836MB=Matte black pendant stem kit for suspended mount cylinder P836SL=Silver pendant stem kit for suspended mount cylinder	Blank=5 conductor for use with 0-10V driver 3C=3 conductor for use with 120 or 277V 5C= conductor for use with D5LT drivers DMX=No conductors for use with DMX RM = for Remote drivers	Blank=36" SP*=* Specify 6" to 144" in 1" increments
	Conduit Pendant Kit ^{(22) (28)} PMRCC6P = Round pendant stem kit with conduit knockout cover, white PMRCC6MB = Round pendant stem kit with conduit knockout cover, black PMRCC6BZ = Round pendant stem kit with conduit knockout cover, bronze PMRCC6SL = Round pendant stem kit with conduit knockout cover, silver	PMSQCC6P = Square pendant stem kit with conduit knockout cover, white PMSQCC6MB = Square pendant stem kit with conduit knockout cover, black PMSQCC6BZ = Square pendant stem kit with conduit knockout cover, bronze PMSQCC6SL = Square pendant stem kit with conduit knockout cover, silver	Blank=36" SP*=* Specify 6" to 144" in 1" increments
	Aircraft cable ⁽²²⁾ AC120P=120" white aircraft cable kit AC48P=48" white aircraft cable kit AC120MB=120" black aircraft cable kit AC48MB=48" black aircraft cable kit	Blank=5 conductor DMXC5=DMX/RDM logarithmic Dimming with RJ45 connection	
[Blank]=Standard TAA= Trade Agreements Act	LNE6RUD=up/down gasketed lens, wet location, round LNE6SQUd=up/down gasketed lens, wet location, square	Optics 46R25=25° 46R30 = 30° 46R35 = 35° 46R40 = 40° 46R45 = 45° 46R50 = 50° 46R55 = 55° 46R60 = 60° 46R65 = 65° 46R70 = 70°	Color Filters ⁽³⁴⁾ F22-20=Red F33-20=Blue F44-20=Green F55-20=Yellow F66-20=Mercury
	Conduit Kit ⁽²⁶⁾ SMRCC6P = Round conduit canopy for surface mount, white SMRCC6MB = Round conduit canopy for surface mount, black SMRCC6BZ = Round conduit canopy for surface mount, bronze SMRCC6SL = Round conduit canopy for surface mount, silver	Dichronic Filters ⁽³⁴⁾ F71-20=Peach F72-20=Amber F73-20=Green F74-20=Medium Blue F75-20=Yellow F76-20=Red F77-20=Dark Blue F78-20=Light Blue F79-20=Neutral Density F80-20=Magenta	Beam-Modifying Lenses ⁽³⁴⁾ LSL-20=Linear Spread Lens OSL-20=Overall Spread Lens DIF-20=Diffused Lens Asymmetric Film ⁽³⁴⁾ 46ASYMFILM=Asymmetric Film (see chart for distribution) Louvers ⁽³⁴⁾ LVR-20=Hex Cell Louver

Notes

- Square reflector
- Round reflector
- Square reflector, requires two reflectors and light engines
- Round reflector, requires two reflectors and light engines
- 347V integral D010 only. 800-2500 lumens for integral driver..
- DMX fixtures default to full on upon loss of DMX signal
- Up down surface mount require 2 driver assemblies
- Order remote driver separately. See below to order.
- Consult factory for custom finishes.
- Only available up to 25 ft.
- Not available with up/down
- Refer to system specifications for additional information, features, and benefits. Order either factory installed option or accessory. WPN and WLN is factory installed only. Use with 0-10V driver. When using with remote driver specify with remote driver assembly.
- Nominal Lumens will vary depending on selected CCT.
- Beam angles are nominal with LI finish trims.
- Spun aluminum trims
- Die cast trims

- Required for use with EM6. Not offered with remote driver.
- 0-45° slope.
- ULUS listed only
- Order with ceiling mount cylinder.
- Lumen specified for up/down is the same for both directions. Ex. 800 lumens will be 800 lumens up & 800 lumens down.
- Ceiling mount only
- Canopy mount driver available for all drivers except DMX, omit R in ordering information
- Not for use with remote driver
- WLST = WaveLinX Lite tile mount sensor kit for daylight dimming, PIR motion sensing, use with D010 only (Refer to WaveLinX Lite system specifications)
- WPST = WaveLinX wireless sensor kit for daylight dimming, PIR motion sensing, and optional RLTS - Real Time Location Services, use with 0-10V only
- To order product that is compliant with the Buy American Act of 1933 (BAA) or Trade Agreements Act (TAA), use the online specification configurator to specify BAA or TAA. Please refer to [DOMESTIC PREFERENCES LINK](#) for more information. Components shipped separately may be separately analyzed under domestic preference requirements. Accessories sold separately will be separately analyzed under domestic preference

- requirements.
- 120V-277V
 - Used to bypass local control during outage. Must be used in conjunction with UL 1008 device (provided by others).
 - Requires 2M designation on light engine
 - Offered with 25° and above distributions.
 - DMX drivers with shallow trim only.
 - Up/down is max 2500 lumens.
 - WPN = WaveLinX PRO wireless node provides luminaire-level control with scene and zone configuration without an integrated sensor; Connects wirelessly with daylight dimming sensor and PIR motion sensor if desired. Use with 0-10V driver only.
 - WLN = WaveLinX LITE wireless node provides luminaire-level control with scene and zone configuration without an integrated sensor; Connects wirelessly with daylight dimming sensor and PIR motion sensor if desired. Use with 0-10V driver only.

Product Specifications

Lower Reflector

- Painted die-cast aluminum or spun aluminum reflector provides superior lumen output with minimal source brightness
- Square surface mount available with square or round reflectors
- Spun reflectors are available in all Portfolio finishes
- Upper portion of specular clear and wheat finish, 45° (DP) reflector is painted black to ensure a quiet appearance without image reflection

Optic

- Interchangeable silicone optic in 5° increments from 25°-70° providing smooth beam without color separation

Trim retention

- Two torsion springs hold flange tightly to the cylinder lip

Cylinder

- Round and soft square extruded aluminum
- Matte white, bronze, silver or matte black. Contact factory for custom finishes.
- Available in standard and shallow heights
- Yoke mount provides +/-45° lockable tilt

Mounting

- Mounting plate installs to mounted junction box
- Cylinder mounts to plate with easy twist and lock hooks for ceiling mount
- For wall mount, mounting arm attaches directly to junction box via a robust mounting plate
- Offered with optional stem and aircraft cable
- Conduit canopy allows for mounting pendant and surface cylinder on hard ceilings provided in painted finish to match the cylinder accommodates ½" or ¾" conduit.

Thermal

- Aluminum heat sink conducts heat away from the LED module for optical performance and longer life

LED System

- Auto resetting, thermally protected, LED's are turned off when safe operating temperatures are exceeded
- Quick disconnect allows for tool-less replacement of LED engine from below ceiling

High CRI

- 98 CRI: L70 55,000 hours
- 98 CRI** With a full-spectrum approach using broad-blue chip technology and special phosphor blends, Thrive is able to closely match the spectrum of the sun across all color temperatures. Benefits of the natural spectrum of the sun using Thrive include superior accurate color rendering, reduced eye strain, and a higher sense of emotional well-being.

Driver

- Standard 120-277V 0-10V dimming driver provides flicker-free dimming from 100% to 1%
- Optional 120V leading edge, <1% 0-10V, Fifth Light, DMX or Lutron®
- Remote driver option up to 100' based on driver selection
- Distributed low voltage power system combines power, lighting, and controls with ease of installation.

Emergency Option

- Provides 90 minutes of standby lighting, meeting most life safety codes for egress lighting
- Available Self-Test (self-diagnostic) with charge indicator and test switch
- Emergency Transfer Relay Device bypasses local control during a power outage
- UL 924 listed

Connected Lighting System

Two WaveLinX connected solutions to choose from. Refer to WaveLinX system specifications and application guides for details.

[WaveLinX PRO Tilemount Sensor Kit](#)

- WaveLinX PRO WPST tilemount sensor kit offers daylight dimming, PIR motion sensing, scene and zone configuration, automatic commissioning; and optional RLTS - Real Time Location Services available.

[WaveLinX PRO Wireless Node](#)

- WaveLinX PRO WPN wireless node provides luminaire-level control with scene and zone configuration without an integrated sensor; Connects wirelessly with daylight dimming sensor and PIR motion sensor if desired. Use with 0-10V driver only. **Note:** Not compatible with 347V or Chicago plenum.

[WaveLinX LITE Tilemount Sensor Kit](#)

- WaveLinX LITE WLST tilemount sensor kit offers daylight dimming and PIR motion sensing, scene and grouping configuration.

[WaveLinX LITE Wireless Node](#)

- WaveLinX LITE WLN wireless node provides luminaire level control with scene and zone configuration without an integrated sensor; Connects wirelessly with daylight dimming sensor and PIR motion sensor if desired. Use with 0-10V driver only. **Note:** Not compatible with 347V or Chicago plenum.

[WaveLinX Tilemount Sensor Kits Application](#)

- The WPST and WLST tilemount sensor kits include a control module mounted on the luminaire junction box via 1/2" knock-out, and a tilemount sensor on 54-inch whip; for ceiling installation by direct-mount spring clips or via mounting bracket in octagon ceiling boxes.
- The WPST and WLST tilemount sensor kits may be ordered as factory installed on the luminaire, or ordered separately as a field installed accessory kit.
- Note: WaveLinX PRO devices are only compatible with the WaveLinX PRO system.**
- Note: WaveLinX LITE devices are only compatible with the WaveLinX LITE system.**

Compliance

- cULus Certified to UL 1598 / C22.2 No. 250.0 suitable for damp locations with covered ceiling
- Wall mount cULus Listed for wet locations, requires gasketed lens kit accessory
- EMI/RFI emissions per FCC 47CFR Part 18 Class B consumer limits
- RoHS compliant
- Photometric testing completed in accordance with IES LM-79
- LED life testing completed in accordance with IES LM-80 standards

Warranty

- Five year warranty www.cooperlighting.com/legal

Energy and Performance Data

D010 DRIVER ENERGY DATA

Series	250 Lumen		500 Lumen		750 Lumen		1000 Lumen		1500 Lumen		2000 Lumen	
Input Voltage 120-277 VAC	120	277	120	277	120	277	120	277	120	277	120	277
Input Current (A)	0.029	0.017	0.054	0.027	0.065	0.031	0.09	0.045	0.129	0.057	0.194	0.086
Input Power (W)	3.4	3.9	6.5	6.9	7.7	8.1	10.7	11.1	15.5	15.4	23.2	23.1
In-rush (A)	2.1	9.15	2.1	9	2.1	9	2.1	9.1	2.1	9.3		11.1
Inrush duration	250	127	254	128	249	142	255	153	255	236	246	115
THDi (%)	8.2	19.9	7.8	14	8.1	11.2	6.6	9.7	11.5	6.6	9.1	11.1
PF	0.99	0.83	0.99	0.91	0.99	0.93	1.0	0.97	0.99	0.98	0.97	0.97

Series	2500 Lumen	
Input Voltage 120-277 VAC	120	277
Input Current (A)	0.23	0.103
Input Power (W)	27.5	276
In-rush (A)	2.6	12.5
Inrush duration	231	197
THDi (%)	7.6	8.8
PF	1.0	0.97

Minimum starting temperature -30°C (-22°F)*
(Nominal input 120-277VAC & 100% of rated output power)

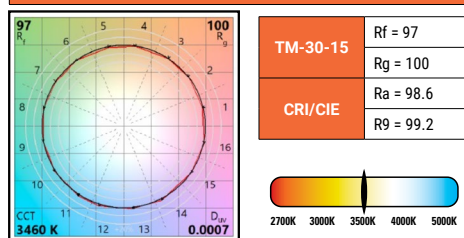
Sound Rating: Class A standards

Notes:

Emergency Battery packs are rated for a minimum starting temperature of 0°C.

COLOR METRICS - TM-30-15 & CRI/CIE

98 CRI Color Metric Summary - 3500K*



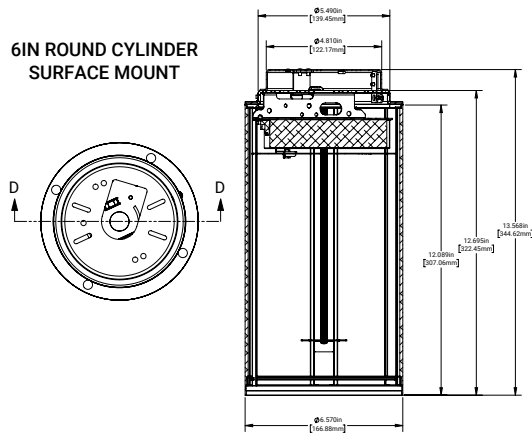
* Color values are based on haze reflector, other finishes and field results may vary.

Asymmetric Film Distribution

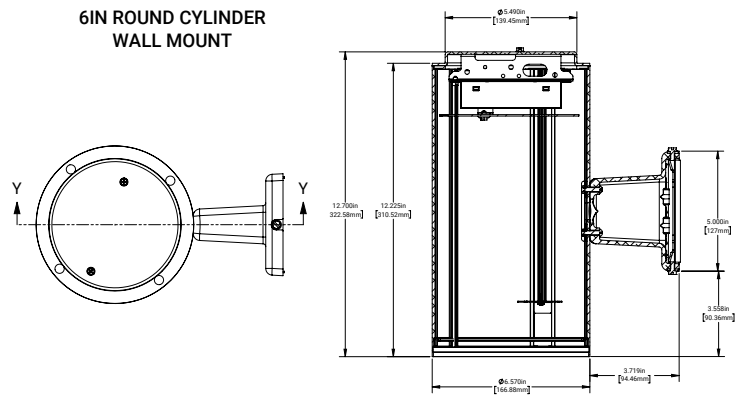
TIR	Short Axis Beam angle	Long Axis Beam angle
R10	12°	27.4°
R15	15°	28°
R20	21°	32°
R30	32°	37°
R35	32°	40°
R40	28°	37°
R45	41°	45°
R50	42°	46°

Dimensional and Mounting Details

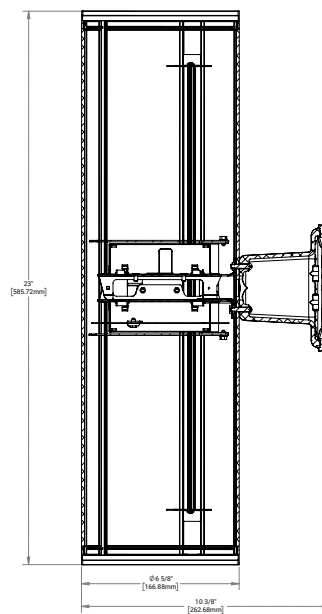
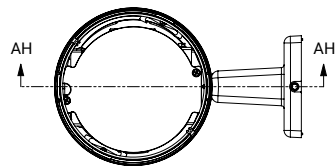
6IN ROUND CYLINDER
SURFACE MOUNT



6IN ROUND CYLINDER
WALL MOUNT

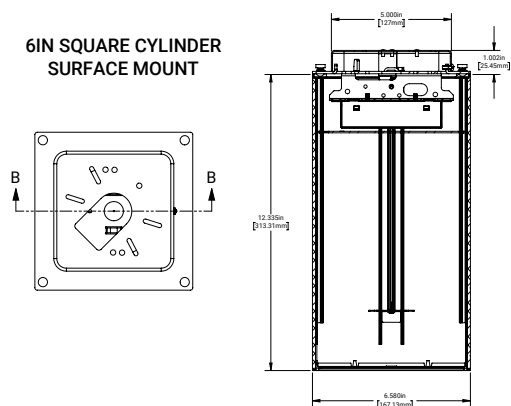


6IN ROUND CYLINDER
UP DOWN

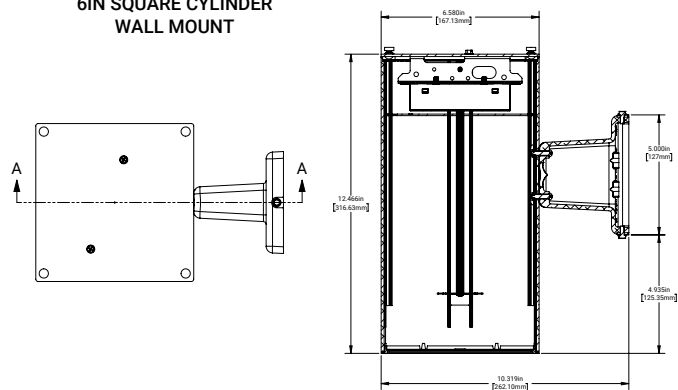


Dimensional and Mounting Details

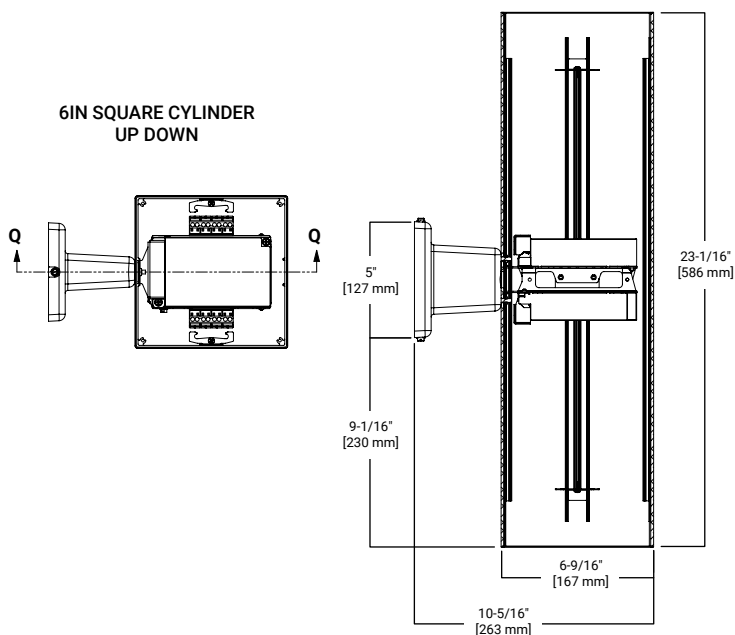
6IN SQUARE CYLINDER
SURFACE MOUNT



6IN SQUARE CYLINDER
WALL MOUNT

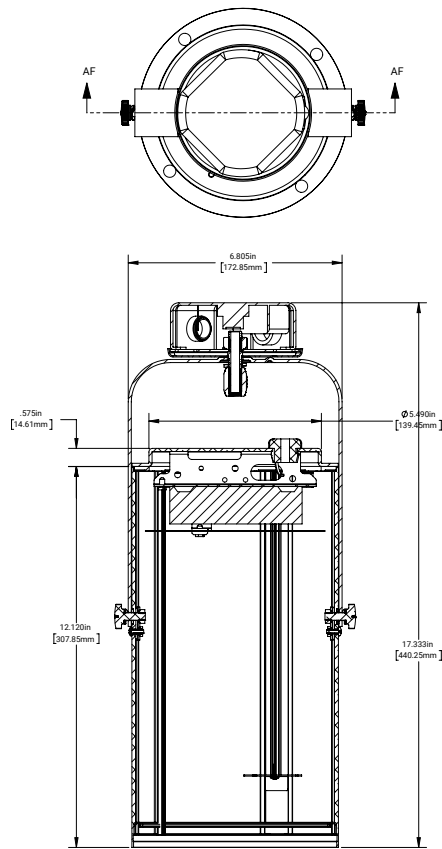


6IN SQUARE CYLINDER
UP DOWN

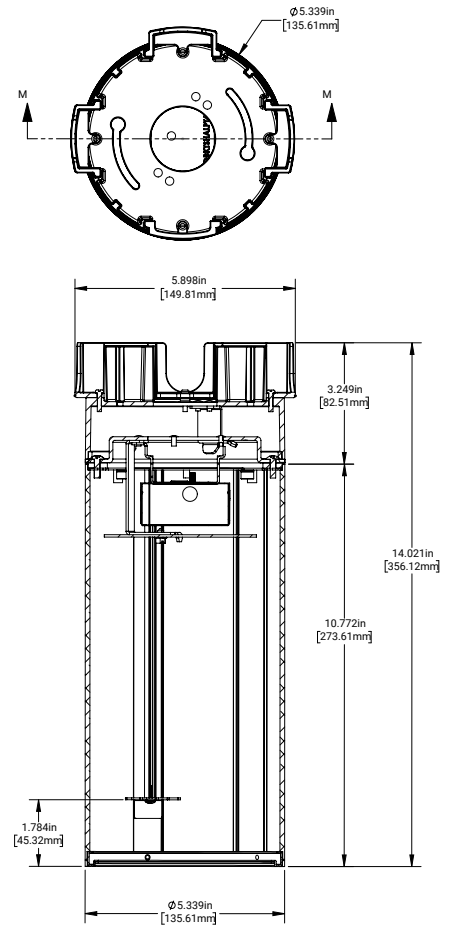


Dimensional and Mounting Details

6IN ROUND CYLINDER
STANDARD YOKE MOUNT

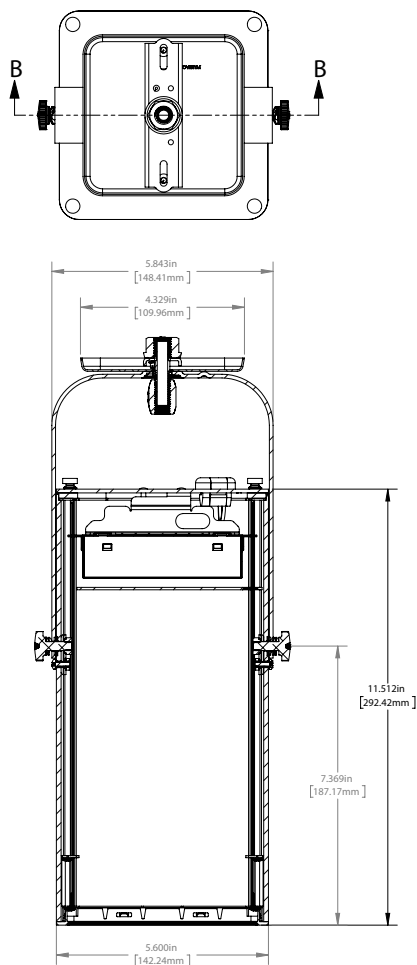


6IN ROUND CYLINDER
CONDUIT CANOPY

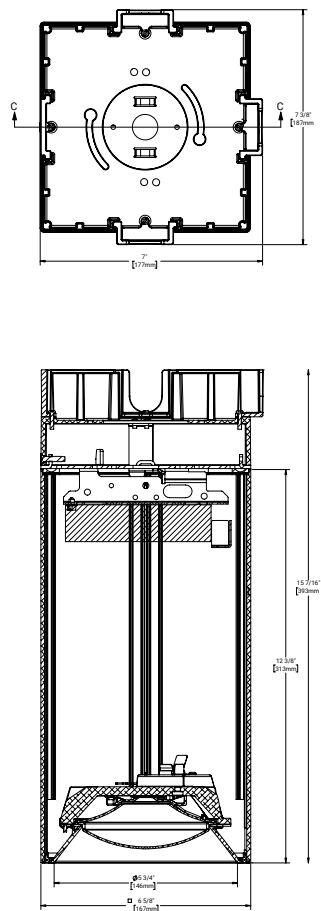


Dimensional and Mounting Details

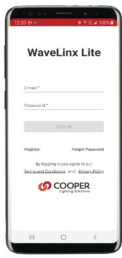
6IN SQUARE CYLINDER
STANDARD YOKE MOUNT



6IN SQUARE CYLINDER
CONDUIT CANOPY



Connected Systems



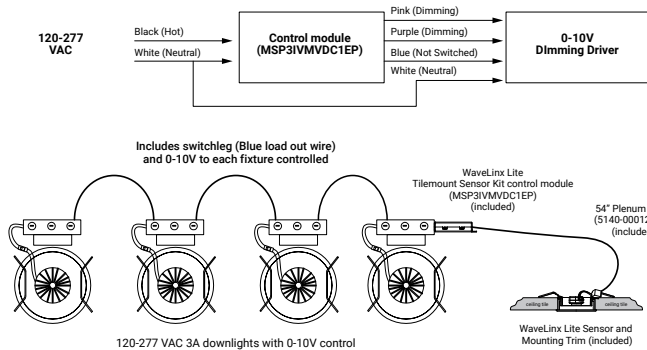
WaveLinX LITE - WLST Tilemount Sensor

WaveLinX LITE devices only compatible with the WaveLinX LITE system.

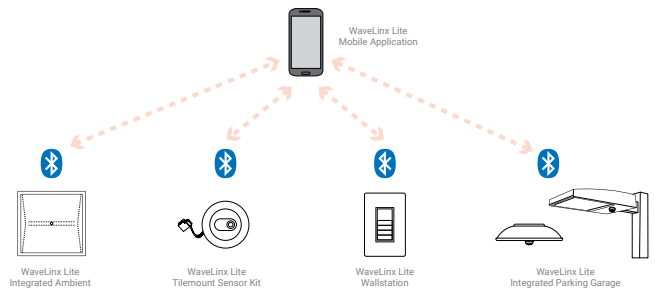
- Intuitive Android™ or Apple® iOS® app for basic system code compliant set up and configuration via Bluetooth
- Up to 28 unique areas per project site (WaveLinX LITE Bluetooth network)
- Up to 50 devices for an area, any one of 16 control zones, up to 6 occupancy sets, and custom lighting scenes
- Automatic occupancy or vacancy, sensor sensitivity, daylight dimming, etc. configurable through the app
- Refer to the WaveLinX system specifications for details



WaveLinX LITE WLST Tilemount Wiring Diagram



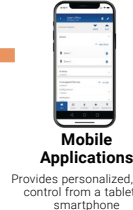
WaveLinX LITE Bluetooth Enabled System



WaveLinX PRO Wireless – WPST Tilemount Sensor

WaveLinX PRO devices only compatible with the WaveLinX PRO system.

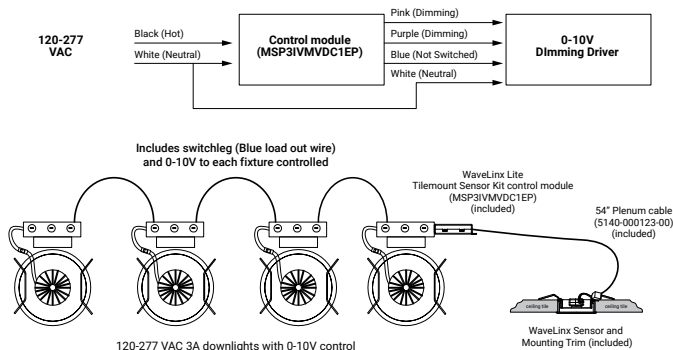
- WaveLinX PRO Wireless functionality configures zones and customizes settings from one secure mobile app
- Automatic code commissioning that meets the strictest codes
- Fixtures and sensors integrate with Wireless Area Controller, Wall Stations, and Control Devices
- Stand-Alone Offices or Entire Building Network Installations



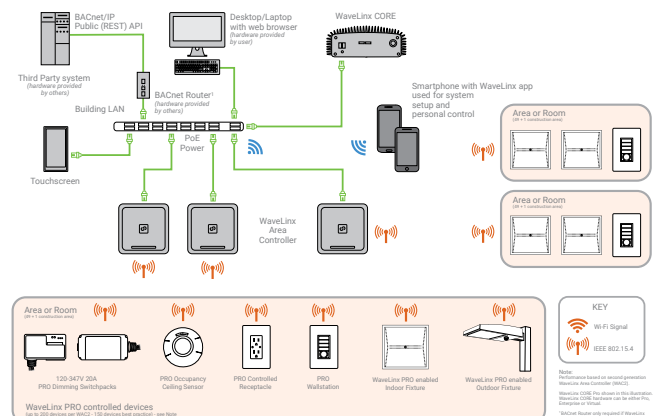
WaveLinX mobile app settings



WaveLinX PRO WPST Tilemount Wiring Diagram



WaveLinX CORE Building Management Integration



Connected Solutions



WaveLinX LITE Wireless Node - WLN

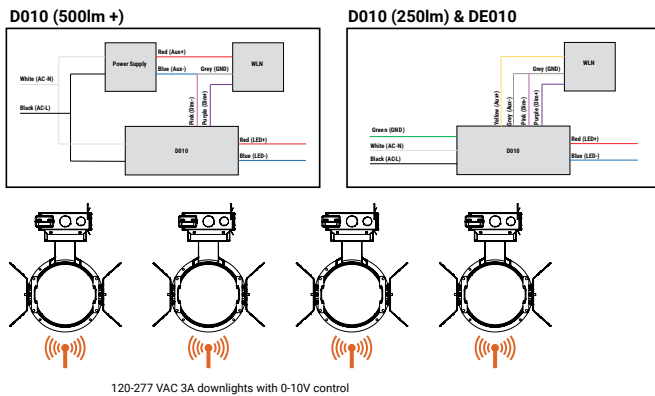
- Intuitive Android™ or Apple® iOS® app for basic system code compliant set up and configuration via Bluetooth
- Up to 28 unique areas per project site (WaveLinX LITE Bluetooth network)
- Up to 50 devices for an area, any one of 16 control zones, up to 6 occupancy sets, and custom lighting scenes
- Refer to the WaveLinX system specifications for details
- Not available with BioUp or Tunable White

WaveLinX mobile app settings



WaveLinX LITE devices only compatible with the WaveLinX LITE system.

WaveLinX LITE Wireless Node (WLN) Wiring Diagram



WaveLinX LITE Bluetooth Enabled System



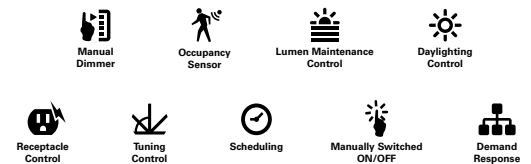
WaveLinX PRO Wireless Node - WPN

- WaveLinX Wireless functionality configures zones and customizes settings from one secure mobile app
- Automatic code commissioning that meets the strictest codes
- Fixtures and sensors integrate with WaveLinX Area Controller, Wall Stations, and Control Devices
- Stand-Alone Offices or Entire Building Network Installations

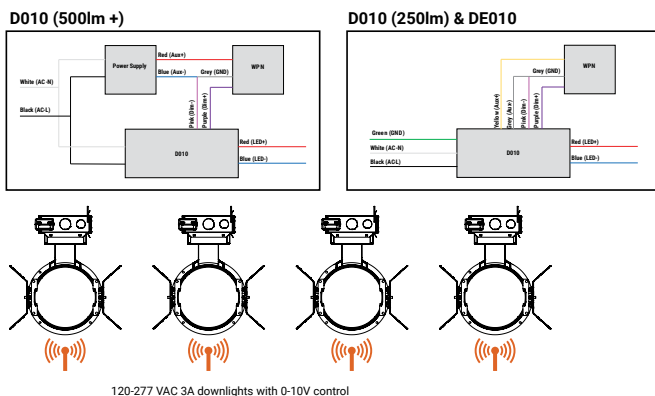
WaveLinX PRO devices only compatible with the WaveLinX PRO system.



WaveLinX mobile app settings



WaveLinX PRO Wireless Node (WPN) Wiring Diagram



WaveLinX CORE Building Management Integration

