

Project		Catalog #		Type	
Prepared by		Notes		Date	



Portfolio

LER6C/LESQ6C Cylinders Full Spectrum

6" Round and Square Cylinder
Surface, Ceiling, Wall, Up/Down, Yoke, Stem and Air Craft Cable Mount
98CRI

Typical Applications

Office • Education • Healthcare • Hospitality • Retail • Residential

Interactive Menu

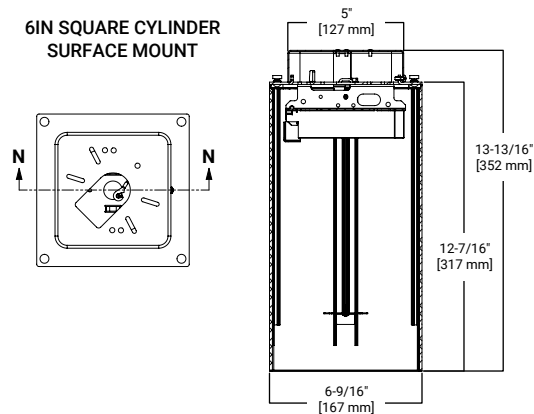
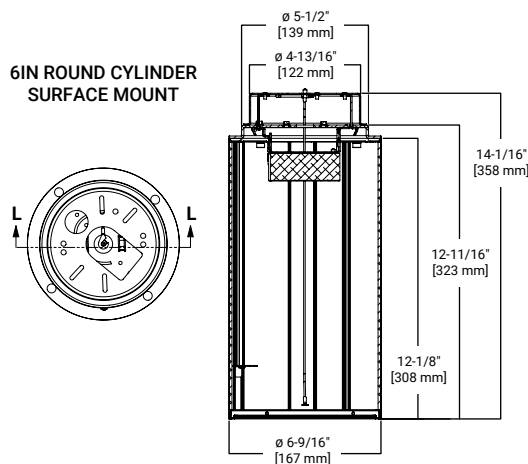
- Order Information page 2
- Product Specifications page 4
- Energy Data page 5
- Connected Systems page 9
- Product Warranty



Top Product Features

- 250 to 4500 lumens
- Extruded aluminum housing; Matte Black, White, Bronze and Silver paint finishes
- 5 color temperatures: 2700K, 3000K, 3500K, 4000K and 5000K CCT
- 98 CRI
- Options to meet Trade Agreements Act requirements

Dimensional and Mounting Details



additional
product diagrams

*T24 and RoHS are self-tested by Cooper Lighting Solutions. Not a third party certification.

Order Information

SAMPLE ORDER NUMBER: LER6C10FSD010TRP

Domestic Preferences ⁽³⁰⁾	Cylinder	Lumens	Color Control	Driver	Remote ⁽⁸⁾	Finish ⁽¹⁰⁾	Factory Installed Connected Lighting Options
[Blank] =Standard TAA = Trade Agreements Act BAA =Buy American Act	Ceiling surface mount LER6C =6-inch round surface mount LESQ6C = 6-inch square surface mount square aperture ⁽¹⁾ LESQR6C = 6-inch square surface mount round aperture ⁽²⁾ Ceiling surface mount Square with conduit canopy (for round use Conduit Canopy Kit accessory) LESQSM6C = 6-inch square surface mount square aperture with surface mount conduit canopy ⁽¹⁾ LESQRSM6C = 6-inch square surface mount, round aperture with surface mount conduit canopy ⁽²⁾ Wall mount Downlight LERWM6C = 6-inch round wall mount LESQRWM6C = 6-inch square wall mount round aperture ⁽²⁾ LESQWM6C = 6-inch square wall mount square aperture ⁽¹⁾ Wall mount Up/down ^{(22) (37)} LERUD6C = 6-inch round wall mount up/down ^{(4) (36)} LESQUD6C = 6-inch square wall mount up/down square aperture ^{(3) (36)} LESQRUD6C = 6-inch square wall mount up/down round aperture ^{(4) (36)} Yoke mount LERYM6C = 6-inch round yoke mount ⁽²⁴⁾ LESQYM6C = 6-inch square yoke mount square aperture ^{(1) (24)} LESQRYM6C = 6-inch square yoke mount round aperture ^{(2) (24)}	02 =250 lumens 05 =500 lumens 08 =800 lumens 10 =1000 lumens 15 =1500 lumens 20 =2000 lumens 25 =2500 lumens 30 =3000 lumens 35 =3500 lumens 40 =4000 lumens 45 =4500 lumens	FS =Full spectrum (Thrive)	D010 =0-10V Dimming, 1% to 100%, 120V-277V, 500-2500 lumens (3000 and above requires remote driver) 3D010 =0-10V Dimming, 1% to 100%, 347V, 800-2500 Lumens (500, 3000 and above requires a Remote Driver) D010TR =0-10V (120-277V) or line voltage (120V) dimming, 1-100%; up to 250 to 2500 (3000 requires remote driver) / 2 drivers: (Downlight with Remote Driver only): 3500 and above Lumens DE010 =0-10V Linear Dimming, 0.1% to 100%, 120V-277V, 500-2500 lumens (3000 and above requires remote driver) D5LT =Fifth Light® DALI DT6 Logarithmic Dimming, 0.1% to 100%, 120V-277V, 500-2500 lumens (3000 and above requires remote driver) DMX =DMX/RDM Logarithmic Dimming, 0.1% to 100%, 120V-277V, 800-2500 lumens (3000 requires remote driver) / 2 drivers: (Downlight with Remote Driver only): 3500 and above Lumens ⁽⁶⁾ DMXC5 =DMX/RDM Logarithmic Dimming, 0.1% to 100%, 120V-277V, with RJ45 connection, 800-2500 lumens (3000 requires remote driver) / 2 drivers: (Downlight with Remote Driver only): 3500 and above Lumens ⁽⁶⁾ DLE =Lutron Ecosystem dimming 1% to 100%, 120-277V; 800 to 2500 Lumens / 2 drivers: (Downlight with Remote Driver only): 3000 and above Lumens DLV =Low Voltage System, 800-2000 lumens	blank =Integral driver R =Remote driver ⁽⁹⁾	P =White MB =Matte Black SL =Silver BZ =Bronze	WPN = WaveLinX PRO Wireless Node without sensor ^{(14) (39)} WLN = WaveLinX LITE Wireless Node without sensor ^{(14) (40)} IEMBOD6ST = Bodine® 6W Self Test Emergency Module with Integral Test Switch (requires EM6 trim option) • Limited to 3000 lumens

SAMPLE ORDER NUMBER: EC6C10259835

Domestic Preferences ⁽³⁰⁾	Power Module	Lumen Levels ⁽¹⁵⁾	CRI	Color
[Blank] =Standard TAA = Trade Agreements Act BAA =Buy American Act	EC6C =6-inch Universal LED Module	98 CRI THRIVE LED 0208 =250, 500 and 800 lumens 98 CRI 1025 =1000, 1500, 2000 and 2500 lumens, 98 CRI 3045 =3000, 3500, 4000 and 4500 lumens, 98 CRI Two LEDs for cylinders with two drivers 30452 =3000, 3500, 4000 and 4500 lumens, 98 CRI (For use with Lutron 3000-4500 lumens, D010TR and DMX 3500-4500 lumens)	98 =98CRI Minimum	98 CRI 27 =2700K 30 =3000K 35 =3500K 40 =4000K 50 =5000K

SAMPLE ORDER NUMBER: 6LBN3LI

Domestic Preferences ⁽³⁰⁾	Trim	Distribution ⁽¹⁶⁾		Flange	Finish	Options
[Blank] =Standard BAA = Buy American Act ⁽³⁵⁾	6LB =6" LED	N =Narrow (30° Beam), Spun Aluminum M =50° Cutoff, Medium Beam, Spun Aluminum MD =45°Cutoff, Medium Beam, Spun Aluminum W =Wide (75° Beam), Spun Aluminum S =Shallow (75° Beam), Spun Aluminum HY =Hyperbolic Medium Beam (Single drivers only) CS =Cast Shallow (75° Beam), Die Cast Aluminum	SWN =Single Wall Wash, Spun Aluminum DWN =Double Wall Wash, Spun Aluminum MDSW =45° Cutoff, Single Wall Wash, Spun Aluminum MDDW = 45° Cutoff, Double Wall Wash, Spun Aluminum LSWW =Lensed Single Wall Wash, Spun Aluminum LDWW =Lensed Double Wall Wash, Spun Aluminum Square (for use with LESQUDS, LESQS) SQ = Medium Beam, 50° Cutoff Square Anodized Aluminum Downlight SQW = Medium Beam, 45° Cutoff Anodized Aluminum Downlight CSSQ =Shallow Die Cast Aluminum	3 =Rimless	LI =Specular Clear ⁽¹⁷⁾ H =Semi-Specular Clear ⁽¹⁷⁾ WMH =Warm Haze ⁽¹⁷⁾ WH =Wheat ⁽¹⁷⁾ GPH =Graphite Haze ⁽¹⁷⁾ B =Specular Black ⁽¹⁷⁾ MW =Matte White MB =Matte Black ⁽¹⁸⁾ MMS =Matte Metallic Silver ⁽¹⁸⁾	EM6 =Integral Emergency Test Switch Hole ⁽¹⁹⁾ For use with: • Available with narrow (N), medium (M) and medium 45° (MD), Shallow (S), Square (SQW). • Limited to 2000 lumens

continued on next page

Order Information

REQUIRED if Remote Driver (R) is specified on Cylinder

Domestic Preferences ⁽³⁰⁾	Remote Drivers ⁽⁹⁾	Lumens	Color Control	Voltage	Driver
[Blank] =Standard TAA = Trade Agreements Act	RC100 =Remote 100 ft RC75 = Remote 75 ft RC50 = Remote 50 ft RC25 = Remote 25 ft RC15 = Remote 15 ft RC5 = Remote 5 ft RC2 = Remote 2 ft	02 =250 lumens 05 =500 lumens 08 =800 lumens 10 =1000 lumens 15 =1500 lumens 20 =2000 lumens 25 =2500 lumens 30 =3000 lumens 35 =3500 lumens 40 =4000 lumens 45 =4500 lumens	FS =Full spectrum (Thrive)	blank =120-277V (up to 2000 lumens) 1 =120V (2500 lumens and above) 2 =277V (2500 lumens and above) 3 =347V ⁽³⁴⁾	D010 =0-10V Dimming, 1% to 100%, 120V-277V, 500-4500 lumens D010TR =0-10V (120-277V) or line voltage (120V) dimming, 1-100%; up to 250 to 3000 / 2 drivers: (Downlight only): 3500 and above Lumens DE010 =0-10V Linear Dimming, 0.1% to 100%, 120V-277V, 500-4500 lumens D5LT =Fifth Light® DALI DT6 Logarithmic Dimming, 0.1% to 100%, 120V-277V, 500-4500 lumens DMX =DMX/RDM Logarithmic Dimming, 0.1% to 100%, 120V-277V, 800-3000 lumens / 2 drivers: (Downlight only): 3500 and above Lumens ⁽⁶⁾ DMXC5 =DMX/RDM Logarithmic Dimming, 0.1% to 100%, 120V-277V, with RJ45 connection, 800-3000 lumens / 2 drivers: (Downlight only): 3500 and above Lumens ⁽⁶⁾ DLE =Lutron Ecosystem dimming 1% to 100%, 120-277V; 800 to 2500 Lumens / 2 drivers: (Downlight only): 3000 and above Lumens ⁽¹²⁾ DLV =Low Voltage System, 800-2000 lumens

Options ^{(31) (33)}	Controls ^{(31) (33)}
EMB0D =Bodine® 7W Emergency Module with Remote Test Switch EMB0D6ST =Bodine® 6W Self Test Emergency Module with Remote Test Switch EM7 =7W Emergency Module with Remote Test Switch EM14 =14W Emergency Module with Remote Test Switch EMB0D7ST =Bodine® 7W Self Test Emergency Module EMV7 =7W Low Voltage Emergency Module with Remote Test Switch ⁽²¹⁾ EMV14 =14W Low Voltage Emergency Module with Remote Test Switch ⁽²¹⁾ ETRD =Emergency transfer device ⁽³²⁾	WPST =Factory installed Wavelinx (includes control module, sensor, cable, tile mount and ceiling mount sensor) ^{(14) (28)} WLST =Factory installed WaveLinX Lite Sensor Kit ^{(14) (27)} WPN = WaveLinX PRO Wireless Node without sensor ^{(14) (39)} WLN = WaveLinX LITE Wireless Node without sensor ^{(14) (40)}

Domestic Preferences ⁽³⁰⁾	Accessories ⁽³⁵⁾	Type	Lengths
[Blank] =Standard TAA =Trade Agreements Act	Pendant Kit ^{(28) (33)} P836P =White pendant stem kit for suspended mount cylinder P836BZ =Bronze pendant stem kit for suspended mount cylinder P836MB =Matte black pendant stem kit for suspended mount cylinder P836SL =Silver pendant stem kit for suspended mount cylinder	Blank =5 conductor for use with 0-10V driver 3C =3 conductor for use with 120 or 277V 5C = conductor for use with D5LT drivers DMX =No conductors for use with DMX RM = for Remote drivers	Blank =36" SP =* Specify 6" to 144" in 1" increments
	Conduit Pendant Kit ^{(26) (33)} PMRCC6P = Round pendant stem kit with conduit knockout cover, white PMRCC6MB = Round pendant stem kit with conduit knockout cover, black PMRCC6BZ = Round pendant stem kit with conduit knockout cover, bronze PMRCC6SL = Round pendant stem kit with conduit knockout cover, silver PMSQCC6P = Square pendant stem kit with conduit knockout cover, white PMSQCC6MB = Square pendant stem kit with conduit knockout cover, black PMSQCC6BZ = Square pendant stem kit with conduit knockout cover, bronze PMSQCC6SL = Square pendant stem kit with conduit knockout cover, silver		Blank =36" SP =* Specify 6" to 144" in 1" increments
	Aircraft cable ^{(26) (33)} AC120P =120" white aircraft cable kit AC48P =48" white aircraft cable kit AC120MB =120" black aircraft cable kit AC48MB =48" black aircraft cable kit	Blank =5 conductor DMXC5 =DMX/RDM logarithmic Dimming with RJ45 connection	
	LNE6RUD =up/down gasketed lens, wet location, round LNE6SQUd =up/down gasketed lens, wet location, square Conduit Kit ⁽²⁶⁾ SMRCC6P = Conduit canopy for round surface mount, white SMRCC6MB = Conduit canopy for round surface mount, black SMRCC6BZ = Conduit canopy for round surface mount, bronze SMRCC6SL = Conduit canopy for round surface mount, silver		

Notes

(1) Square reflector

(2) Round reflector

(3) Square reflector, requires two reflectors and light engines

(4) Round reflector, requires two reflectors and light engines

(5) 347V integral D010 only. 800-3500 lumens for integral driver. 250-4000 lumens for remote driver.

(6) DMX fixtures default to full on upon loss of DMX signal

(8) Up down surface mount require 2 driver assemblies

(9) Order remote driver separately. See below to order.

(10) Consult factory for custom finishes.

(12) Only available up to 25 ft.

(13) Not available with up/down

(14) Refer to system specifications for additional information, features, and benefits. Order either factory installed option or accessory. Use with 0-10V driver. WPN is factory installed only.

(15) Nominal Lumens will vary depending on selected color, driver and reflector finish.

(16) Beam angles are nominal with LI finish trims.

(17) Spun aluminum trims

(18) Die cast trims

(19) Required for use with EM6. Not offered with remote driver.

(20) 0-45° slope.

(21) ULus listed only

(22) Lumen specified for up/down is the same for both directions. Ex. 800 lumens will be 800 lumens up & 800 lumens down.

(24) Ceiling mount only

(25) Canopy mount driver available for all drivers except DMX, omit R in ordering information

(26) Not for use with remote driver

(27) WLST = WaveLinX Lite tile mount sensor kit for daylight dimming, PIR motion sensing, use with D010 only (Refer to WaveLinX Lite system specifications)

(28) WPST = WaveLinX wireless sensor kit for daylight dimming, PIR motion sensing, and optional RLTS - Real Time Location Services, use with 0-10V only

(30) To order product that is compliant with the Buy American Act of 1933 (BAA) or Trade Agreements Act (TAA), use the online specification configurator to specify BAA or TAA. Please refer to [DOMESTIC PREFERENCES LINK](#) for more information. Components shipped separately may be separately analyzed under domestic preference requirements. Accessories sold separately will be separately analyzed under domestic preference requirements.

(31) 120V-277V

(32) Used to bypass local control during outage. Must be used in conjunction with UL 1008 device (provided by others). (33) Non-IC

(33) Order with ceiling mount cylinder.

(34) D010 800 to 3000 lumens (250, 500, 3500 and above lumens use step down transformer) All other drivers use step down transformer.

(35) Offered with spun aluminum narrow (N), medium (M) and wide (W) trims.

(36) DMX drivers with shallow trim only.

(37) Up/down is max 4000 lumens.

(39) WPN = WaveLinX PRO wireless node provides luminaire-level control with scene and zone configuration without an integrated sensor; Connects wirelessly with daylight dimming sensor and PIR motion sensor if desired. Use with 0-10V driver only.

(40) WLN = WaveLinX LITE wireless node provides luminaire level control with scene and zone configuration without an integrated sensor; Connects wirelessly with daylight dimming sensor and PIR motion sensor if desired. Use with D010 or DE010 drivers only.

Product Specifications

Lower Reflector

- Painted die-cast aluminum or spun aluminum lower reflector with a lensed upper optical chamber provides superior lumen output with minimal source brightness
- Square surface mount available with square or round reflectors
- Spun reflectors are available in all Portfolio finishes

Wall Wash Reflector

- Open Wall Wash - wall wash reflector with gradient kicker offered in single and double with choice of wide or medium beam, providing even vertical illumination with minimal source brightness.
- Rotatable Lensed Wall Wash - Rotatable lensed wall wash reflector offered in single and double wall wash provides even vertical illumination with minimal source brightness.

Trim retention

- Two torsion springs hold flange tightly to the cylinder lip

Cylinder

- Round and soft square extruded aluminum
- Matte white, bronze, silver or matte black. Contact factory for custom finishes.
- Available in standard and shallow heights
- Yoke mount provides +/-45° lockable tilt

Mounting

- Mounting plate installs to mounted junction box
- Cylinder mounts to plate with easy twist and lock hooks for ceiling mount
- For wall mount, mounting arm attaches directly to junction box via a robust mounting plate
- Offered with optional stem and aircraft cable
- Conduit canopy allows for mounting pendant and surface cylinder on hard ceilings provided in painted finish to match the cylinder accommodates ½" or ¾" conduit.

Thermal

- Aluminum heat sink conducts heat away from the LED module for optical performance and longer life

LED System

- Contains a plurality of high brightness white LED's combined with a high reflectance upper reflector and convex transitional lens producing even distribution without pixilation
- Auto resetting, thermally protected, LED's are turned off when safe operating temperatures are exceeded
- Quick disconnect allows for tool-less replacement of LED engine from below ceiling

High CRI

- 98 CRI: L70 55,000 hours
- **98 CRI** With a full-spectrum approach using broad-blue chip technology and special phosphor blends, Thrive is able to closely match the spectrum of the sun across all color temperatures. Benefits of the natural spectrum of the sun using Thrive include superior accurate color rendering, reduced eye strain, and a higher sense of emotional well-being.

Driver

- Standard 120-277V 0-10V dimming driver provides flicker-free dimming from 100% to 1%
- Optional 120V leading edge, <1% 0-10V, Fifth Light, DMX or Lutron®
- Remote driver option up to 100' based on driver selection
- Distributed low voltage power system combines power, lighting, and controls with ease of installation.

Emergency Option

- Provides 90 minutes of standby lighting, meeting most life safety codes for egress lighting
- Available Self-Test (self-diagnostic) with remote charge indicator and test switch
- Emergency Transfer Relay Device bypasses local control during a power outage
- UL 924 listed

Connected Lighting System

Two WaveLinx connected solutions to choose from. Refer to WaveLinx system specifications and application guides for details.

[WaveLinx PRO Tilemount Sensor Kit](#)

- WaveLinx PRO WPST tilemount sensor kit offers daylight dimming, PIR motion sensing, scene and zone configuration, automatic commissioning; and optional RLTS - Real Time Location Services available.

[WaveLinx PRO Wireless Node](#)

- WaveLinx PRO WPN wireless node provides luminaire-level control with scene and zone configuration without an integrated sensor; Connects wirelessly with daylight dimming sensor and PIR motion sensor if desired. Use with 0-10V driver only. **Note:** Not compatible with 347V or Chicago plenum.

[WaveLinx LITE Tilemount Sensor Kit](#)

- WaveLinx LITE WLST tilemount sensor kit offers daylight dimming and PIR motion sensing, scene and grouping configuration.

[WaveLinx LITE Wireless Node](#)

- WaveLinx LITE WLN wireless node provides luminaire level control with scene and zone configuration without an integrated sensor; Connects wirelessly with daylight dimming sensor and PIR motion sensor if desired. Use with 0-10V driver only. **Note:** Not compatible with 347V or Chicago plenum.

[WaveLinx Tilemount Sensor Kits Application](#)

- The WPST and WLST tilemount sensor kits include a control module mounted on the luminaire junction box via 1/2" knock-out, and a tilemount sensor on 54-inch whip; for ceiling installation by direct-mount spring clips or via mounting bracket in octagon ceiling boxes.
- The WPST and WLST tilemount sensor kits may be ordered as factory installed on the luminaire, or ordered separately as a field installed accessory kit.
- **Note: WaveLinx PRO devices are only compatible with the WaveLinx PRO system.**
- **Note: WaveLinx LITE devices are only compatible with the WaveLinx LITE system.**

Compliance

- Pendant mount cULus Listed for damp locations
- Ceiling mount cULus Listed for wet locations and IP66 compliant in covered ceiling
- Wall mount cULus Listed for wet locations and IP66 compliant, requires lens accessory for up/down wall mount
- EMI/RFI emissions per FCC 47CFR Part 18 Class B consumer limits
- RoHS compliant
- Photometric testing completed in accordance with IES LM-79
- LED life testing completed in accordance with IES LM-80 standards

Warranty

- Five year warranty www.cooperlighting.com/legal

Energy and Performance Data

D010 DRIVER ENERGY DATA

Series	250 lumen		500 lumen		800 lumen		1000 lumen		1500 lumen		2000 lumen	
Input Voltage 120-277VAC	120V	277V	120V	277V	120V	277V	120V	277V	120V	277V	120V	277V
Input Current (A)	0.029	0.017	0.061	0.032	0.085	0.041	0.084	0.042	0.135	0.063	0.189	0.084
Input Power (W)	3.45	3.87	7.33	7.78	10.15	10.52	10.04	10.43	16.17	16.56	22.58	22.63
In-rush (A)	2.1	8.5	3.7	8.5	3.6	8.3	3.6	8.4	2.3	9.5	2.1	9.7
Inrush duration (μs)	250	131	190	136	220	135	226	136	230	125	243	132
THDi (%)	7.21	16.92	7.82	10.78	5.57	9.63	7.78	9.24	4.75	9.93	8.03	7.44
PF	≥ 0.98	≥ 0.9	≥ 0.99	≥ 0.93	≥ 0.99	≥ 0.95	≥ 0.99	≥ 0.95	≥ 0.99	≥ 0.94	≥ 0.99	≥ 0.96

Series	2500 lumen		3000 lumen		3500 lumen		4000 lumen		4500 lumen	
Input Voltage 120-277VAC	120V	277V	120V	277V	120V	277V	120V	277V	120V	277V
Input Current (A)	0.276	0.121	0.276	0.121	0.333	0.152	0.404	0.181	0.421	0.192
Input Power (W)	32.98	32.57	32	32.57	39.83	39.84	48.38	47.94	50.22	50.17
In-rush (A)	2.5	11.8	3.6	11.8	3.1	14.3	3.1	14.5	5.6	22.6
Inrush duration (μs)	215	111	220	111	200	94	197	95	215	120
THDi (%)	9.86	6.57	5.57	6.57	4.25	10.05	5.02	7.97	6.12	8.35
PF	≥ 0.99	≥ 0.97	≥ 0.99	≥ 0.99	≥ 0.99	≥ 0.94	≥ 0.99	≥ 0.95	≥ 0.99	≥ 0.95

Minimum starting temperature -30°C (-22°F)*
(Nominal input 120-277VAC & 100% of rated output power)

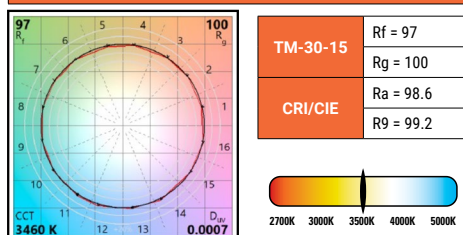
Sound Rating: Class A standards

Notes:

Emergency Battery packs are rated for a minimum starting temperature of 0°C.

COLOR METRICS - TM-30-15 & CRI/CIE

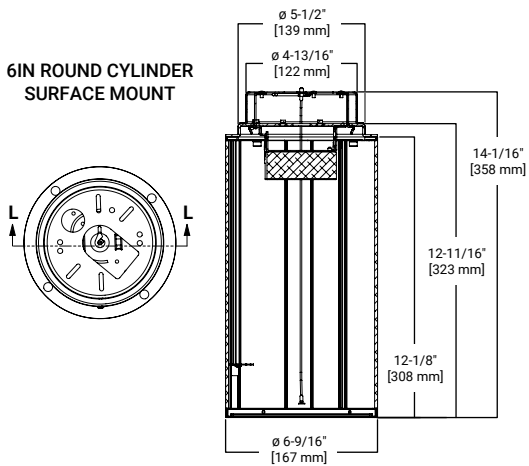
98 CRI Color Metric Summary - 3500K*



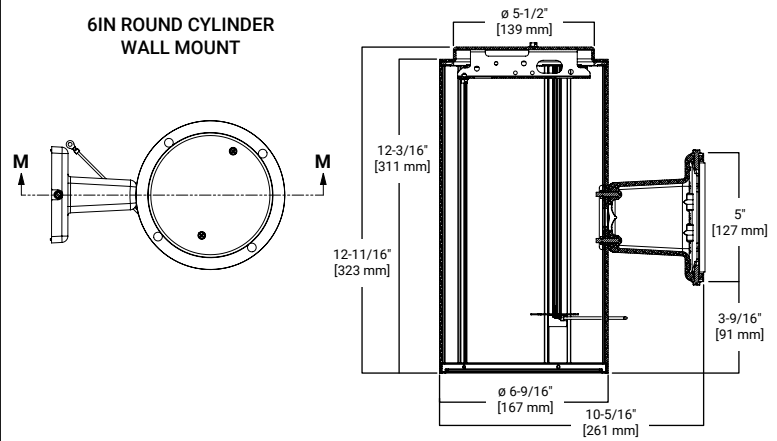
* Color values are based on haze reflector, other finishes and field results may vary.

Dimensional and Mounting Details

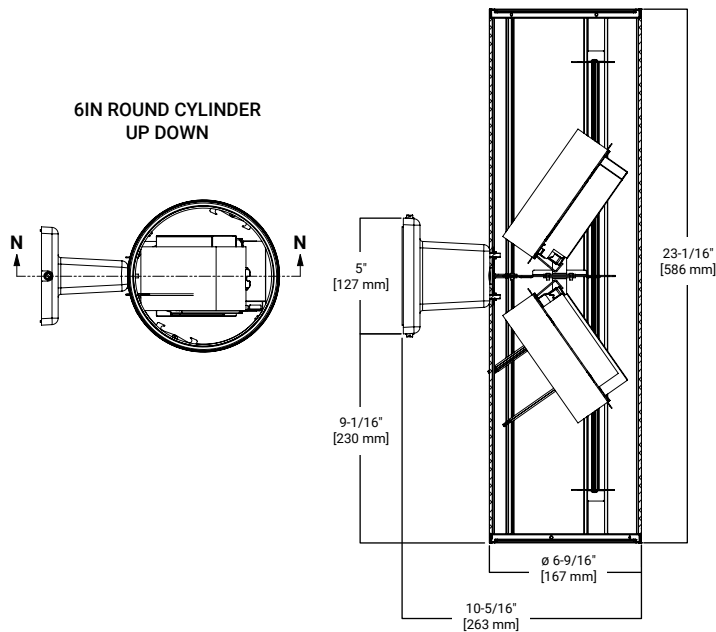
6IN ROUND CYLINDER
SURFACE MOUNT



6IN ROUND CYLINDER
WALL MOUNT

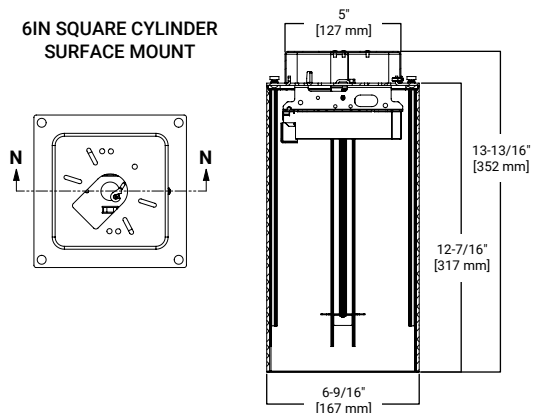


6IN ROUND CYLINDER
UP DOWN

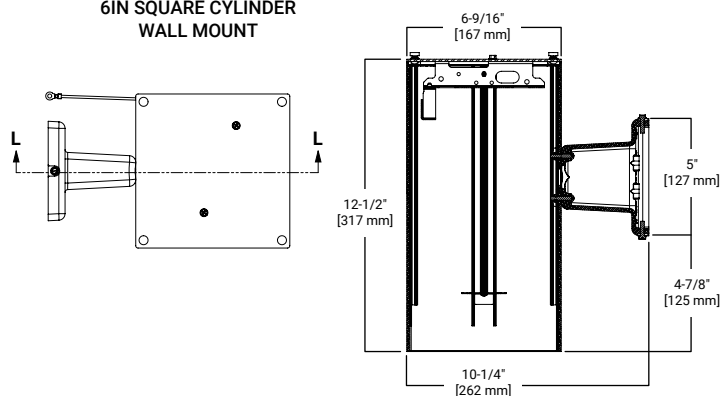


Dimensional and Mounting Details

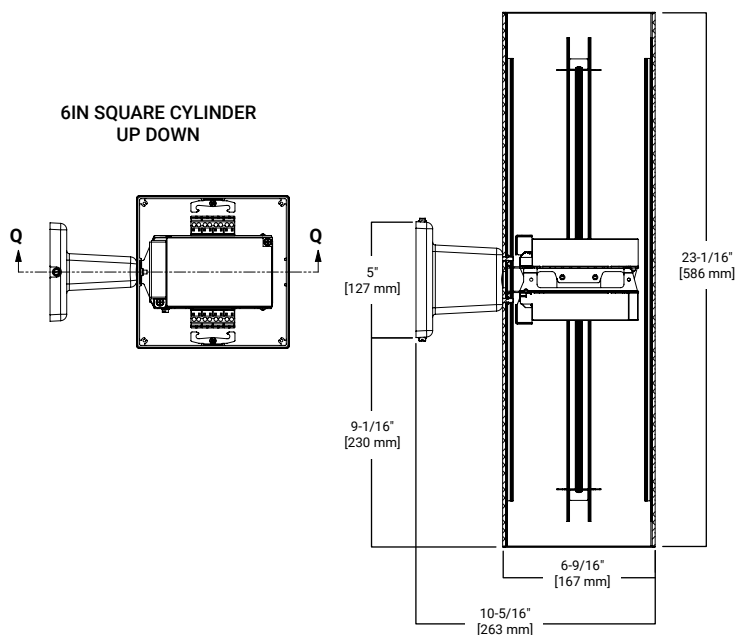
6IN SQUARE CYLINDER
SURFACE MOUNT



6IN SQUARE CYLINDER
WALL MOUNT

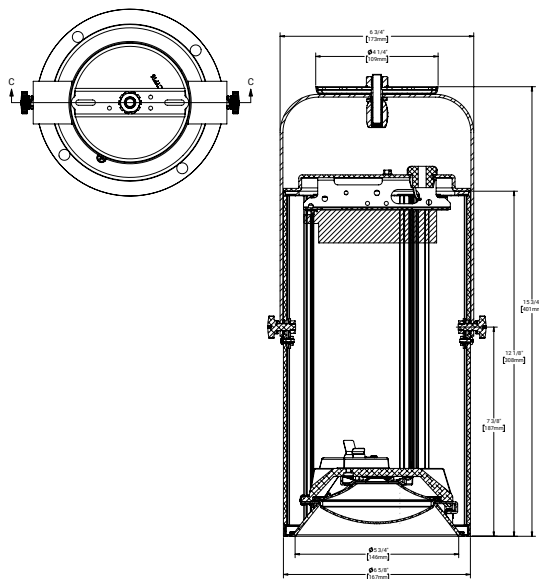


6IN SQUARE CYLINDER
UP DOWN

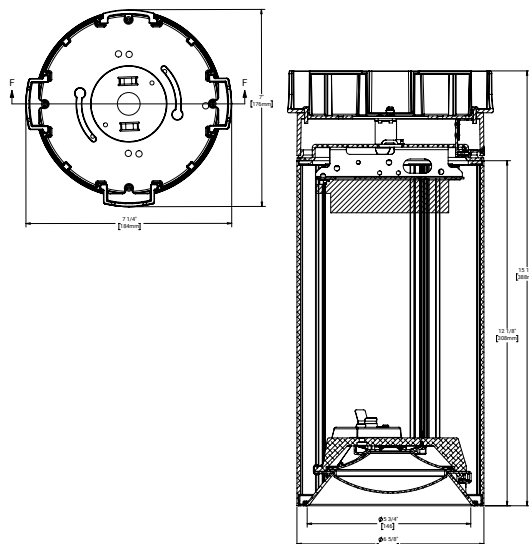


Dimensional and Mounting Details

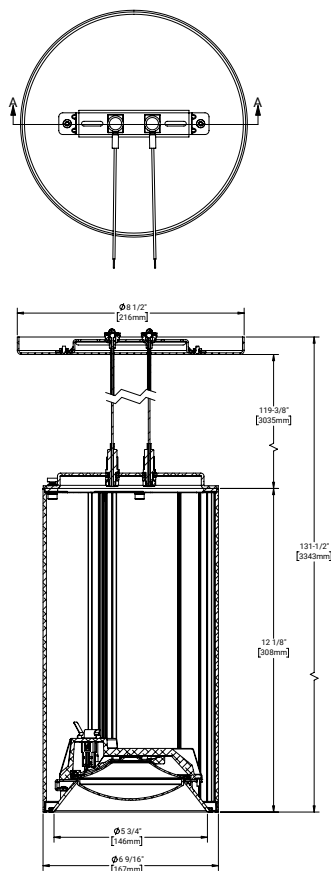
6IN ROUND CYLINDER
STANDARD YOKE MOUNT



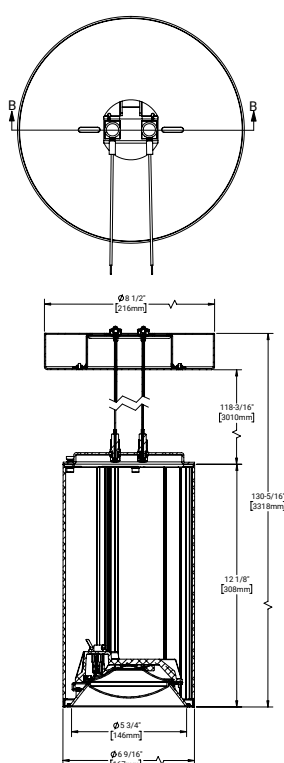
6IN ROUND CYLINDER
CONDUIT CANOPY



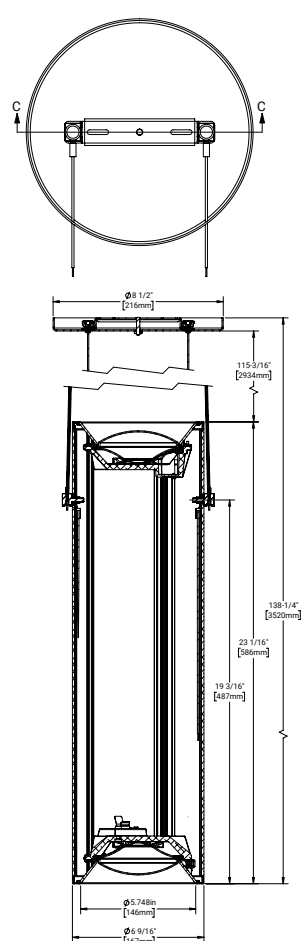
6IN ROUND CYLINDER
POWER CORD PENDANT



6IN ROUND CYLINDER
POWER CORD PENDANT DRIVER



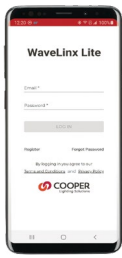
6IN ROUND CYLINDER
STANDARD POWER CORD UP DOWN PENDANT



Connected Systems

WaveLinX LITE - WLST Tilemount Sensor

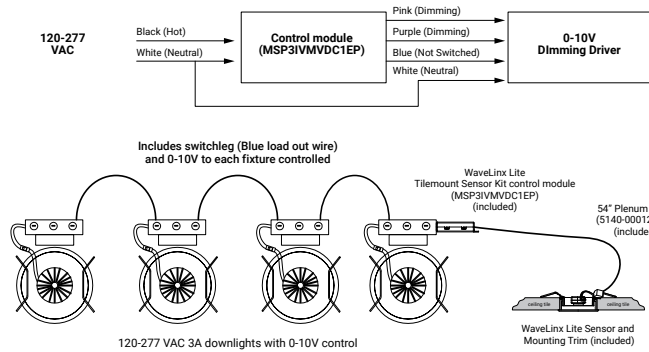
WaveLinX LITE devices only compatible with the WaveLinX LITE system.



- Intuitive Android™ or Apple® iOS® app for basic system code compliant set up and configuration via Bluetooth
- Up to 28 unique areas per project site (WaveLinX LITE Bluetooth network)
- Up to 50 devices for an area, any one of 16 control zones, up to 6 occupancy sets, and custom lighting scenes
- Automatic occupancy or vacancy, sensor sensitivity, daylight dimming, etc. configurable through the app
- Refer to the WaveLinX system specifications for details



WaveLinX LITE WLST Tilemount Wiring Diagram



WaveLinX LITE Bluetooth Enabled System



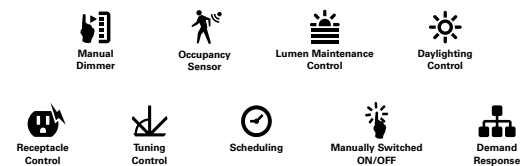
WaveLinX PRO Wireless – WPST Tilemount Sensor

WaveLinX PRO devices only compatible with the WaveLinX PRO system.

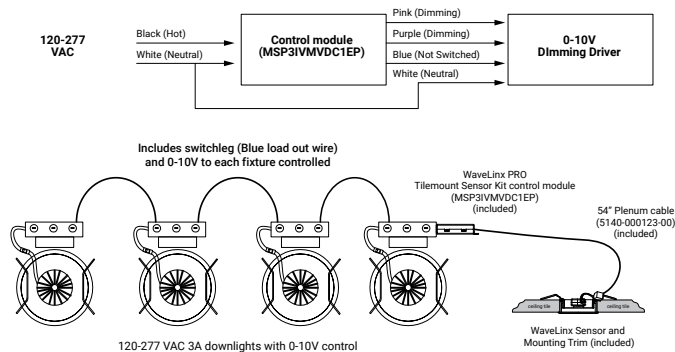


- WaveLinX PRO Wireless functionality configures zones and customizes settings from one secure mobile app
- Automatic code commissioning that meets the strictest codes
- Fixtures and sensors integrate with Wireless Area Controller, Wall Stations, and Control Devices
- Stand-Alone Offices or Entire Building Network Installations

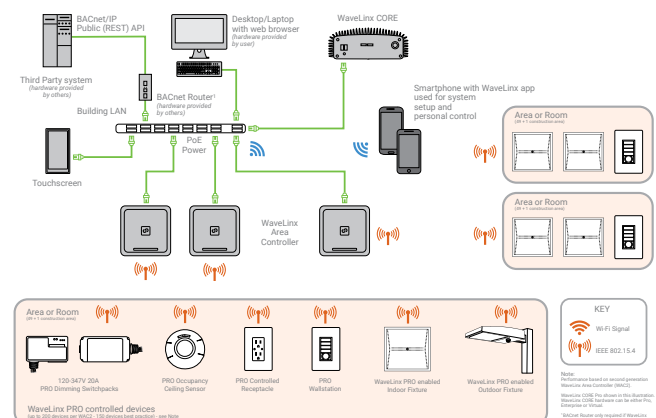
WaveLinX mobile app settings



WaveLinX PRO WPST Tilemount Wiring Diagram



WaveLinX CORE Building Management Integration



Connected Solutions



WaveLinX LITE Wireless Node - WLN

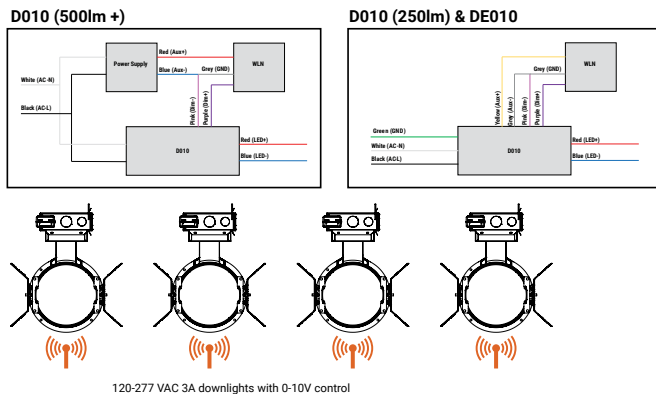
WaveLinX LITE devices only compatible with the WaveLinX LITE system.

- Intuitive Android™ or Apple® iOS® app for basic system code compliant set up and configuration via Bluetooth
- Up to 28 unique areas per project site (WaveLinX LITE Bluetooth network)
- Up to 50 devices for an area, any one of 16 control zones, up to 6 occupancy sets, and custom lighting scenes
- Refer to the WaveLinX system specifications for details
- **Not available with BioUp or Tunable White**

WaveLinX mobile app settings



WaveLinX LITE Wireless Node (WLN) Wiring Diagram



WaveLinX LITE Bluetooth Enabled System

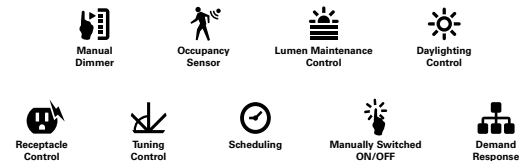


WaveLinX PRO Wireless Node - WPN

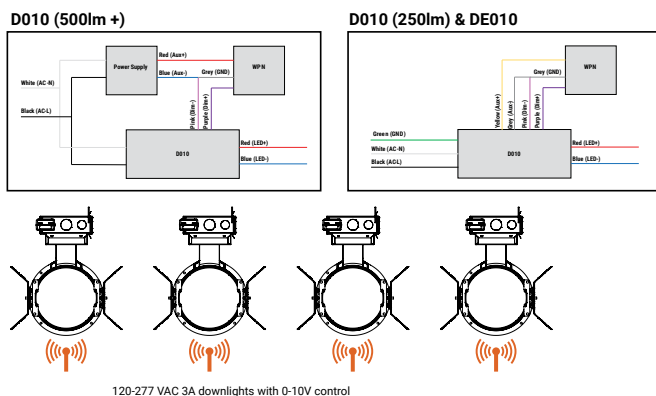
WaveLinX PRO devices only compatible with the WaveLinX PRO system.

- WaveLinX Wireless functionality configures zones and customizes settings from one secure mobile app
- Automatic code commissioning that meets the strictest codes
- Fixtures and sensors integrate with WaveLinX Area Controller, Wall Stations, and Control Devices
- Stand-Alone Offices or Entire Building Network Installations

WaveLinX mobile app settings



WaveLinX PRO Wireless Node (WPN) Wiring Diagram



WaveLinX CORE Building Management Integration

