

| | | | | | |
|-------------|--|-----------|--|------|--|
| Project | | Catalog # | | Type | |
| Prepared by | | Notes | | Date | |



Metalux

SPHB

LED Selectable Linear High Bay

Typical Applications

Industrial • Commercial • Retail • Manufacturing • Warehouse • Gymnasium ⁽¹⁾
 • Multi-purpose • Grocery • High Bay / Low Bay Applications

Note: (1) Rigid Stem mount not recommended for use in gymnasiums.

Interactive Menu

- Energy and Performance Data [page 2](#)
- Product Specifications [page 2](#)
- Photometric Data [page 3](#)
- Sensor Coverage [page 5](#)
- Product Warranty

Product Certification



Product Features

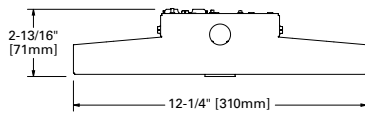


Top Product Features

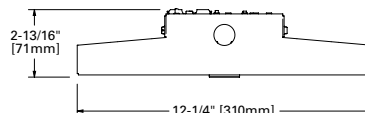
- Compact linear design for easy install
- 2 Sizes offering deliver lumens from 12,000 up to 36,000 lumens
- High Performance efficacy up to 157 lm/W
- Optimized medium distribution
- Sensor ready port for in-field installation
- IK10 rated for unfriendly environments

Dimensional and Mounting Details

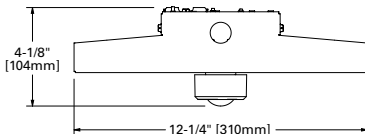
18 INCH - NO SENSOR



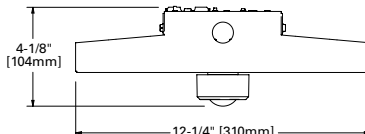
26 INCH - NO SENSOR



18 INCH - SENSOR



26 INCH - SENSOR



[additional product diagrams](#)

Energy and Performance Data

| Catalog# | UPC | Voltage | Lumen Setting | CCT Setting | Lumens | Watts | Efficacy (lm/W) |
|-----------------------------------|--------------|---------|---------------|-------------|--------|-------|-----------------|
| SPHB-1224SE-M-UNV-L84050-CD-SP1-U | 080083289264 | 120-277 | Low | 4000 | 12,853 | 82 | 157 |
| | | | | 5000 | 12,851 | 82 | 157 |
| | | | Med | 4000 | 18,802 | 123 | 153 |
| | | | | 5000 | 18,646 | 123 | 152 |
| | | | High | 4000 | 24,190 | 164 | 147 |
| | | | | 5000 | 24,120 | 164 | 147 |
| SPHB-2436SE-M-UNV-L84050-CD-SP1-U | 080083289288 | 120-277 | Low | 4000 | 24,912 | 162 | 154 |
| | | | | 5000 | 24,799 | 162 | 153 |
| | | | Med | 4000 | 31,161 | 209 | 149 |
| | | | | 5000 | 30,731 | 208 | 148 |
| | | | High | 4000 | 36,237 | 251 | 144 |
| | | | | 5000 | 35,747 | 249 | 144 |

Lumen Maintenance

| Ambient Temperature | TM-21 Lumen Maintenance (60,000 hours) | Theoretical L70 (hours) |
|---------------------|--|-------------------------|
| 25°C | > 88% | > 173,000 |

Ambient Ratings

| Lumen Package | Suspended ≥12" from ceiling | Surface Mounted using SPHB-SMK |
|-----------------------------------|-----------------------------|--------------------------------|
| SPHB-1224SE-M-UNV-L84050-CD-SP1-U | 45C | 40C |
| SPHB-2436SE-M-UNV-L84050-CD-SP1-U | 45C | 40C |

Shipping Data

| Catalog No. | Gross Weight |
|-----------------------------------|--------------|
| SPHB-1224SE-M-UNV-L84050-CD-SP1-U | 8 lbs. |
| SPHB-2436SE-M-UNV-L84050-CD-SP1-U | 10 lbs. |

Product Specifications

Construction

- Durable CRS housing provides added protection for LED components and optimal performance
- Compact, low-profile design for easy installation
- High impact, polycarbonate lens protects LEDs and provides optimal distribution
- IK10 rated

Electrical

- Long-life LED system with electronic driver for optimal performance
- Selectable power switch for 3 levels of lumen output per model
- Selectable color switch provides 4000 or 5000K CCT at CRI ≥80
- 120 - 277V operation
- 0-10V dimming, 10% with dim-to-off standard
- Operating temperature of -40°C to 45°C

Optics

- Medium distribution standard

Mounting

- V-hangers and chain set for suspension mount included
- Optional single-point and surface mount kits are available

Compliance

- cULus listed for damp locations
- IESNA LM-79 and LM-80 standards compliant
- Qualifies as State of California Title 24 non-residential high efficiency luminaire
- FCC part 15 class A compliant
- DesignLights Consortium® Qualified and classified for DLC Premium, refer to www.designlights.org for details.

Sensor

- Plug and play low-voltage sensor accessory available
- Sensor installs directly to integral fixture port
- PIR motion sensor with 0-10V control
- Up to 40ft mounting height
- Sensor remote control must be ordered separately

Finish

- White powder coat finish painted after fabrication

Warranty

- Five year limited warranty

Installed Options (include in catalog logic when ordering)

Ex. SPHB-1224SE-M-UNV-L84050-CD-SP1- WLS4 -U

| Catalog Number | Description |
|----------------|---|
| C6 | 6' cord, 18/3, white |
| C12 | 12' cord, 18/3, white |
| PC6/277 | 6' cord, 18/3, white, with 277V, 15A NEMA twist-lock plug |
| PC12/277 | 12' cord, 18/3 with 277V, 15A NEMA twist-lock plug |
| WLS4 | Wavelinx Lite Wireless Sensor, Sidecar |
| WPS4 | Wavelinx Pro Wireless Sensor, Sidecar |
| EL14WHV | 14-watt 120V-277V, Class 1 emergency battery pack installed |
| EL20WHV | 20-watt 120V-277V, Class 1 emergency battery pack installed |

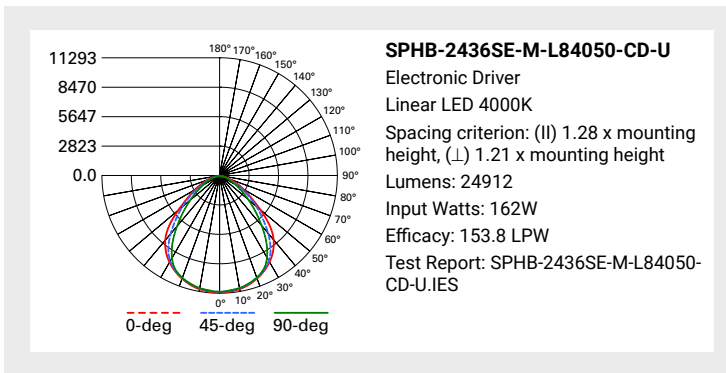
Installed options available for order after March 18, 2024

Accessories List (sold separately)

| Catalog Number | Description |
|--------------------|--|
| C6 | 6' cord, 18/3, white |
| C12 | 12' cord, 18/3, white |
| PC6/277 | 6' white cord, 18/3, with 277V, 15A NEMA twist-lock plug |
| PC12/277 | 12' white cord, 18/3, with 277V, 15A NEMA twist-lock plug |
| SPHB-SMK | Surface mount kit. Qty. 1 required for SPHB-1224SE-M-UNV-L84050-CD-SP1-U. Qty. 2 required for SPHB-2436SE-M-UNV-L84050-CD-SP1-U. |
| SPHB-WG-18 | Wire Guard for SPHB-1224 |
| SPHB-WG-26 | Wire Gurard for SPHB-2436 |
| UHBS-SENSOR PK | PIR Sensor Kit w/ 360 Lens |
| UHBS SENSOR REMOTE | UHBS Sensor Remote Control |
| SPHB-SPM | Single point mounting kit |

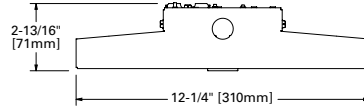
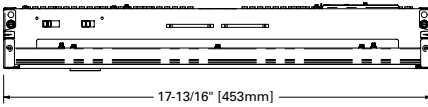
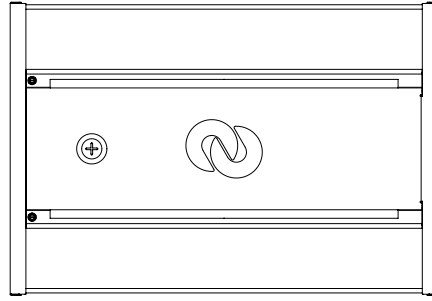
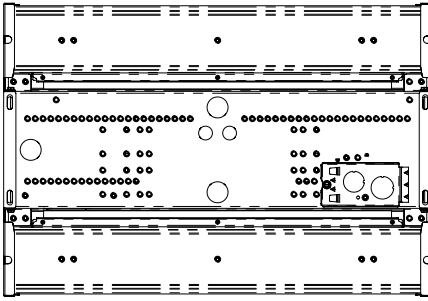
Photometric Data

[View IES files](#)

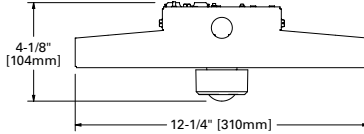
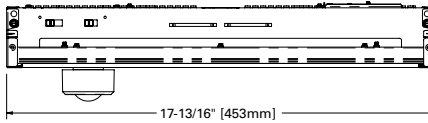


Dimensional and Mounting Details

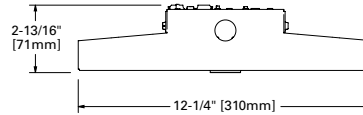
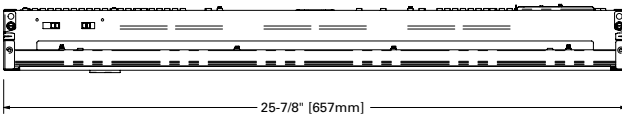
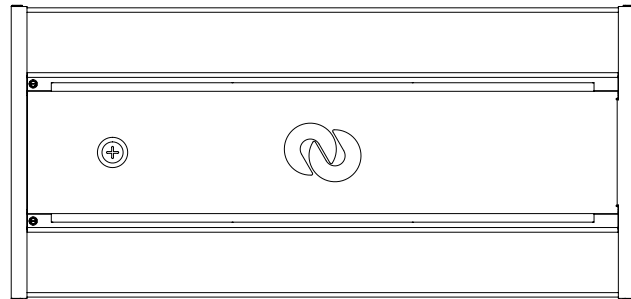
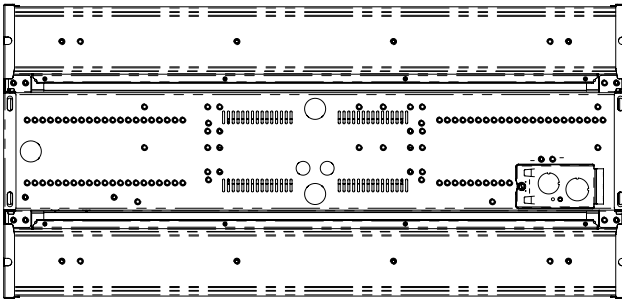
18 INCH - NO SENSOR



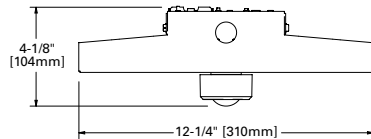
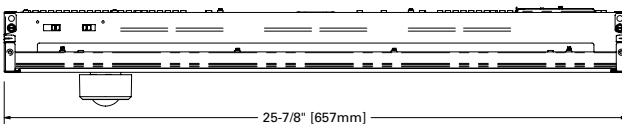
18 INCH - SENSOR



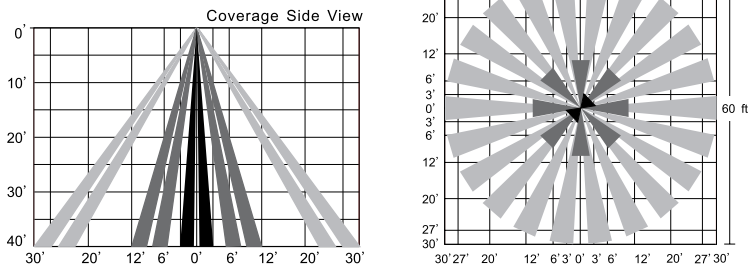
26 INCH - NO SENSOR



26 INCH - SENSOR



Sensor Coverage



Sensor Specifications

| | |
|------------------------|--|
| Power supply | 12V-24V DC, >30mA |
| Dim control output | 0-10V, max. 25mA sinking current |
| Remote range | 50ft. (15m) indoor, no backlight |
| Dim control output | 0-10V |
| Detection radius | 20% / 50% / 75% / 100% (1-8m) |
| Mounting height | Up to 40ft (12 m) |
| Time setting | 10s / 1 min / 5 min / 10 min / 15 min / 20 min / 30 min / 60 min |
| Light-control | 24H / 10 LUX / 30 LUX / 50 LUX |
| Sensor Operating Temp. | -20°C to 60°C |
| IP rating | IP65 |

Notes: Warm up time 40 sec after sensor first receives input power. Fixture will stay on 40 seconds then work move to default mode.

Any setting changed by sensor remote control (order remote separately), will led lights on remote to turn on and off to confirm. See sensor instruction sheet on SPHB product page found on www.cooperlighting.com

Sensor Modes

| | Brightness | Sensitivity | Hold Time | Daylight Sensor | Stand-by Dim | Stand-by Period |
|-------------------------|------------|-------------|-----------|-----------------|--------------|-----------------|
| MODE 1 (Default) | 100% | 75% | 5 min | Disabled | 30% | 30 min |
| MODE 2 | 100% | 75% | 1 min | Disabled | 30% | ∞ |
| MODE 3 | 100% | 75% | 5 min | 30LUX | 30% | 30 min |
| MODE 4 | 100% | 75% | 1 min | (30LUX/300LUX) | 30% | ∞ |