

Project		Catalog #		Type	
Prepared by		Notes		Date	



iO LED

MiniO Flex-Optic MFO

The flexible, top-bend minimalistic form factor with remote driver delivers high color quality, precise optical distributions, and flexibility in IP65 wet location applications

Typical Applications

- Commercial Office Spaces • Schools • Hospitals • Retail • Municipal
- Hospitality • Restaurants

Product Certification



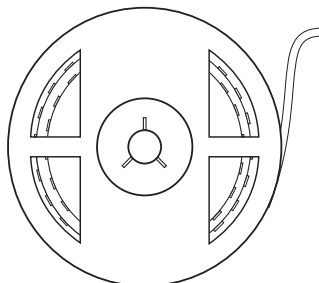
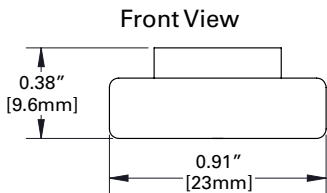
Interactive Menu

- Order Information [page 2](#)
- Photometric Data [page 3](#)
- Energy and Performance Data [page 2](#)
- Mounting and Installation [page 4](#)
- [Product Warranty](#)

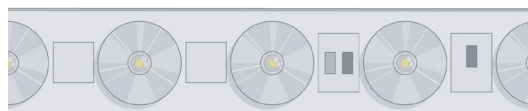
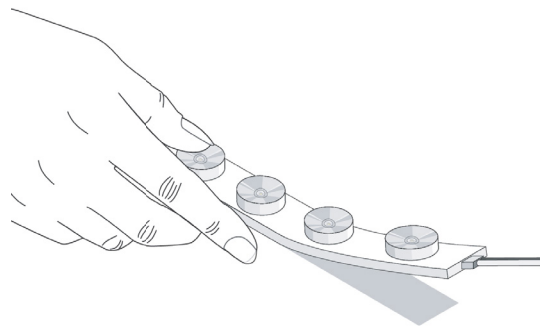
Top Product Features

- Top bend flexible wallwasher or wall grazer
- Four unique optical distributions
- Field-cutable in 6.56" increments
- IP65 rated for outdoor applications
- Resilient, UV stable silicone material with adhesive backing

Dimensions



5m (16.4') reel length (one cut)



Scale



Order Information

SAMPLE ORDER NUMBER: **MFO-06W-930-60-OD-21F-UNV-STD**

Series	Power/Light level	LED CRI & CCT	Optical Distribution	Environment	Total Continuous Run Length	Voltage
MFO	06W=6W/ft	927=90 CRI 2700K CCT 930=90 CRI 3000K CCT 935=90 CRI 3500K CCT 940=90 CRI 4000K CCT	20=20° 30=30° 60=60° ASYM= Asymmetric	OD=Outdoor	XXXF	UNV=120V/277V
Notes	Notes	Notes	Notes	Notes Fixture rated for outdoor use but may be used indoors Remote driver is indoor only	Notes Length is resolved into reels of 5M (16.4') and provided with (1) driver per reel (i.e. 21F is two (2) reels at 16.4ft each and (2) drivers of specified dimming protocol (90W or 96W). Best practice is to level-load the drivers in application. Single cut and seal to length in-field. To maintain IP rating and warranty, installation instructions must be followed to seal cut end per the installation instructions. If cut in field, accessory MFO- CUT-KIT01 must be ordered separately. Cut increment every 6.56". When specifying continuous run length, round up to the nearest foot. One cut per 5m reel allowed with accessory MFO-CUT-KIT01 (order separately). If multiple lengths less than 5m (16.4ft) are needed, consult factory for custom-cut program. Do not exceed run lengths shown in Figure 1.	Notes

Dimming Protocol
STD=0-10V ND=No Dim (On/Off)
Notes Drivers with j-box are indoor rated only. STD driver is 90W nominal. One (1) driver provided per reel. ND driver is 96W nominal. One (1) driver provided per reel. For multiple lengths less than 5m (16.4ft), consult factory for custom-cut program Do not exceed 95% of driver capacity or maximum run length of 5m (16.4ft). Allowable remote mount distance of driver provided in installation instructions.

Spare Components

(Refer to "Total Continuous Run Length" notes in catalogue logic prior to specifying power supply accessories)

Catalog Number	Description
CLS-90D-JBOX01	90W Driver with 0-10V Dimming Module enclosed in Indoor Rated Junction Box
CLS-100ND-JBOX01	96W Driver with No Dimming enclosed in Indoor Rated Junction Box

Mounting Accessories

Order mounting accessories separately. Standard mounting with MFO standard reel includes silicone saddle clips (see page 4). For freedom-Mount, it is recommended saddle clips reinforce mounting every 1' in addition to the adhesive backing tape.

Catalog Number	Description
MFO-CHAN-MNT01-S	MFO 39" Aluminum Channel, Lens, Endcaps - Silver Finish
MFO-SM-MNT01-S	(Set of 2) MFO Surface Mount Brackets (requires MFO-CHAN-MNT01) -Silver Finish*
MFO-CUT-KIT01	MFO End cap kit, 5 Open, 5 Closed

NOTES: *Available with channel mount accessory only (MFO-CHAN-MNT01). Mounting channel accessory separately.

General Specification

Wattage	6 W/ft
CCTs	2700K 3000K 3500K 4000K
Beam Angles	20° 30° 60° 20°x45°
Style	Top-Bend
Dimensions	0.9in. x 43in. (W x H)
Maximum Length	Refer to Figure 1
Cut Increment / Resolution	6.56in.
IP Rating	IP65
Ambient Temperature	-4 to 122°F (-20 to 50°C)
Maximum Bend Radius	3in.
Lifetime	L70>60,000hrs

Figure 1

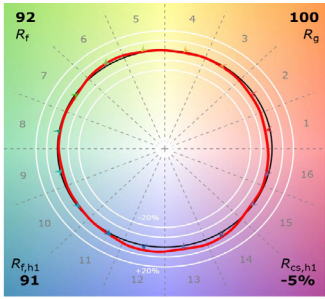
MFO	Max Run Length of MFO	
	STD Driver	ND Driver
W/ft	90W	96W
5.8W	16.4ft	16.4ft

Lumen/Ft Output

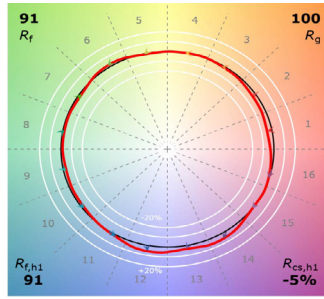
MFO	Optical Distribution	Color Temperature (CCT)			
		2700K	3000K	3500K	4000K
06W	20°	616	656	656	689
	30°	613	652	652	685
	60°	557	593	593	623
	Asymmetric	588	626	626	658

TM-30 Data

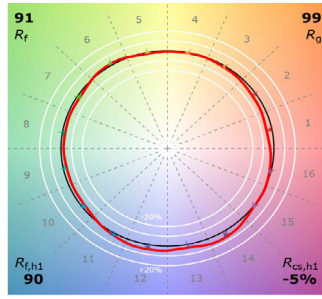
2700K



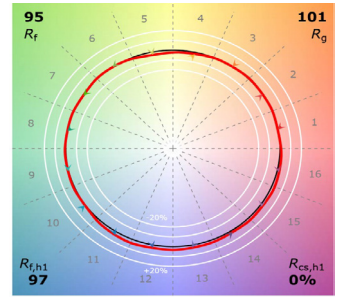
3000K



3500K



4000K



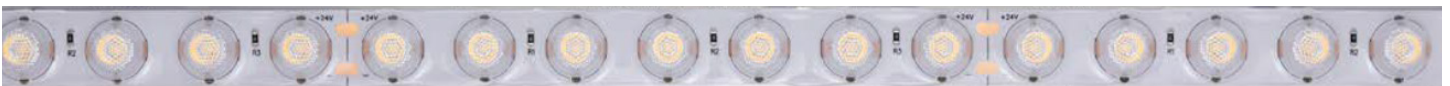
Color Rendering

CCT	CRI	Rf	Rg	R9
2700K	93	92	100	63
3000K	93	91	100	63
3500K	92	91	99	61
4000K	92	95	101	63

Diagrams

Cut Point

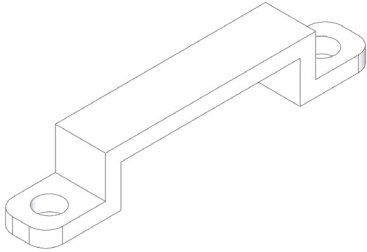
Cut Point



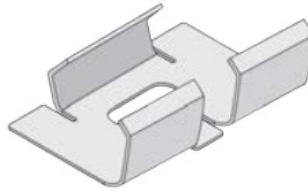
IP65 Endcaps

Diagrams

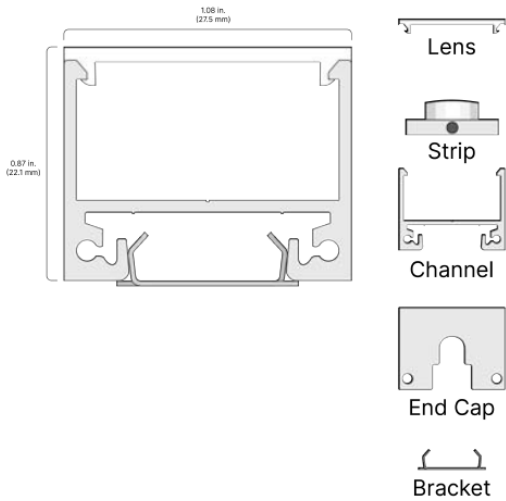
Saddle Clip Bracket (Standard)



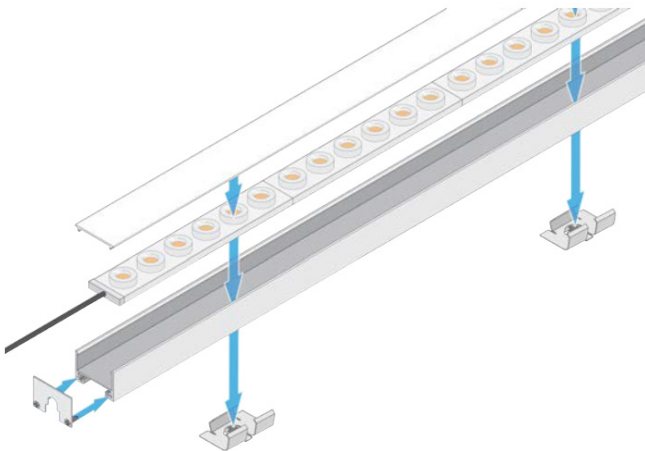
SM Surface Mount Bracket



Channel with Surface Mount Bracket



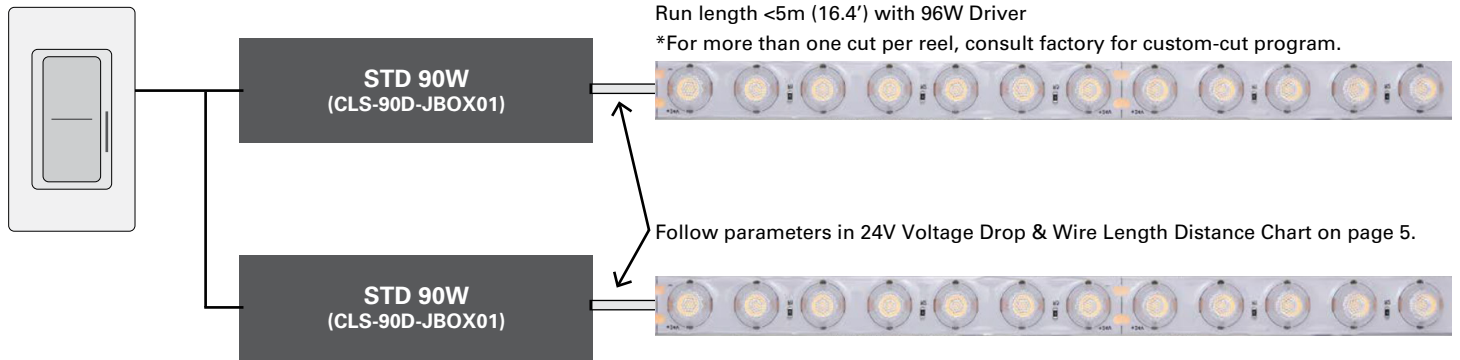
Channel with Surface Mount Bracket



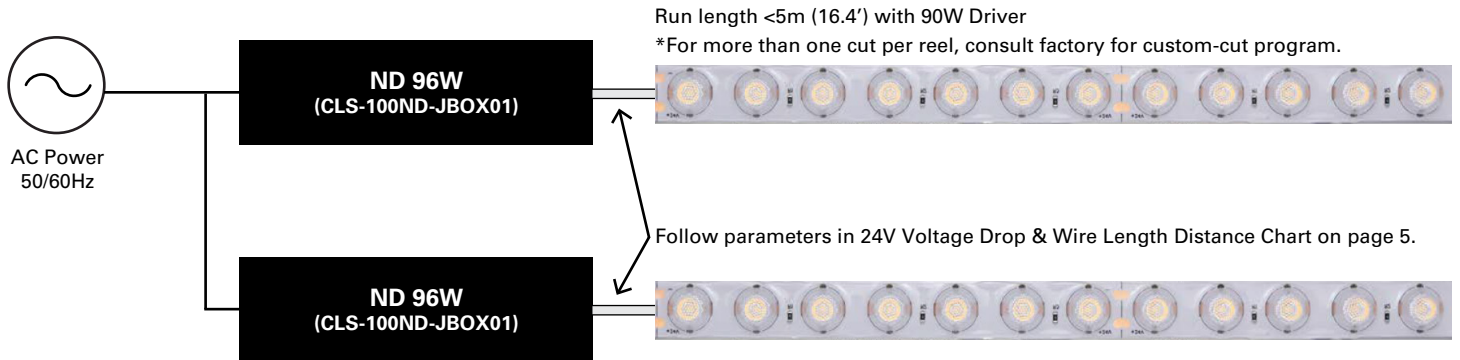
Channel accessory (MFO-CHAN-MNT01) must be ordered separately from "Mounting Accessories".
 Per mounting accessory specification (SM), two (2) brackets per 39" extrusion (MFO-CHAN-MNT01) will be provided.
 For additional mounting bracket accessories, order separately from "Mounting Accessories."

System Architecture

STD - 0-10V Dimming Protocol



ND - No Dim Protocol



24V Voltage Drop & Wire Length Distance Chart

Wire Gauge	10 W .42 A	20 W .83 A	30 W 1.3 A	40 W 1.7 A	50 W 2.1 A	60 W 2.5 A	70 W 2.9 A	80 W 3.3 A	100 W 4.2 A
18 AWG	134 ft.	68 ft.	45 ft.	33 ft.	27 ft.	22 ft.	19 ft.	17 ft.	14 ft.
16 AWG	215 ft.	109 ft.	72 ft.	54 ft.	43 ft.	36 ft.	31 ft.	27 ft.	22 ft.
14 AWG	345 ft.	174 ft.	115 ft.	86 ft.	69 ft.	57 ft.	49 ft.	43 ft.	36 ft.
12 AWG	539 ft.	272 ft.	181 ft.	135 ft.	108 ft.	90 ft.	77 ft.	68 ft.	56 ft.
10 AWG	784 ft.	397 ft.	263 ft.	197 ft.	158 ft.	131 ft.	112 ft.	98 ft.	82 ft.