

Catalog #		Date		Prepared by	
Project		Type		Notes	



FGS - SECURITY FLOODLIGHTS

WITH LUMEN SELECT AND CCT SELECT TECHNOLOGY



HIGH OUTPUT DIE-CAST SECURITY FLOODLIGHTS | 120V-277V INPUT | 5CCT SELECTABLE | MOTION, DUSK-TO-DAWN OR SWITCH ACTIVATED | BRONZE & WHITE FINISH | LUMEN SELECT TECHNOLOGY

The FGS Floodlight Family is designed to cover a range of different use cases by including a lumen-selectable switch and CCT Select switch. Ideal for both residential and commercial applications.

TOP PRODUCT FEATURES

Selectable up to **6000 LUMENS**



- Durable diecast constructed light head with UV resistant transparent polycarbonate lens
- 5 selectable brightness levels with Lumen Select feature
- Larger square single head for high output
- Switch activated / Dusk to Dawn and Motion Activated models available
- Maintenance-free LEDs with 50,000 hours of life.
- Wall or eave mounted to recessed or surface junction boxes (with optional accessory)
- Easy to install with Quick Connect wiring harness

PRODUCT CERTIFICATION



CATEGORY	AVAILABLE TYPE	AVAILABLE FINISH	LUMENS
FGS60 - SINGLE HEAD MOTION		WHITE BRONZE	UP TO 3000 LUMENS
FGS30 - SINGLE HEAD DUSK TO DAWN (ON/OFF PHOTOCELL)	 		UP TO 6000 LUMENS

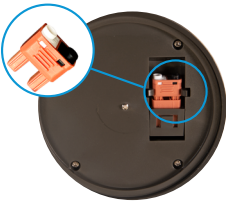


Interactive Menu

- [Product Dimensions](#) page 3
- [Order Information](#) page 4
- [Product Specification](#) page 4
- [Product Warranty](#) page 4
- [Photometric Data](#) page 5

PRODUCT FEATURE HIGHLIGHTS

Quick Connect wiring harness



Halo's quick connect wiring system allows for simple installation without wire nuts.

Selectable Photocell



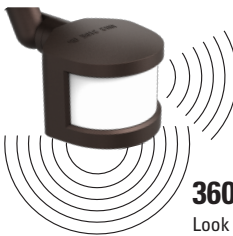
PHOTOCELL ON
Dusk to Dawn Mode



PHOTOCELL OFF
Switch Activated Mode

Dusk to Dawn FGS fixtures can be manually set to a switch activated fixture by simply rotating the photocell cover cap counterclockwise

DualTech - Motion Sensor



180° | 50 Ft

360° | 50 Ft

Look Down Sensor
Eliminates Motion Blindspots
below motion sensor head

Configurable Motion Sensor - Time out, Sensitivity & Standby Dim level



- A** 360 Degree Look down sensor eliminates blind spots under the fixture
- B** Sensitivity (SENS) - Adjust how sensitive the motion is detecting motion
- C** Timeout (TIME) - Set how long fixture stays on when motion is detected
- D** D2D & Motion (DIM) - At 100% the fixture will act as a Dusk to Dawn Fixture
At 0% the fixture will act as a Motion fixture
Between 1% -99% the fixture will turn on at night automatically at the selected brightness level.

Standby Dimming - Features allow for even more energy savings



TYPICAL APPLICATIONS

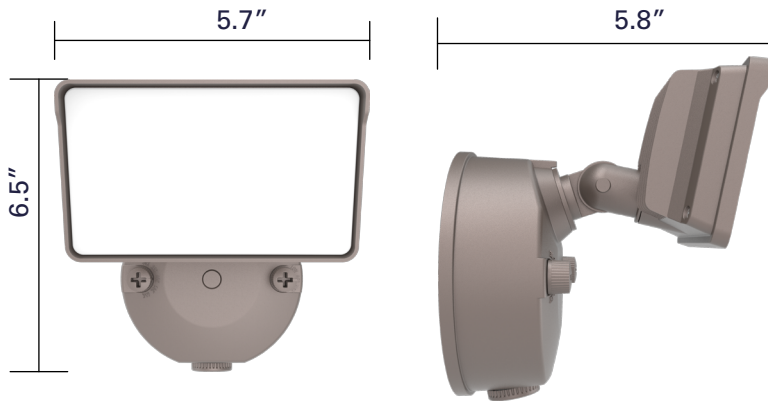


RESIDENCIAL APPLICATIONS

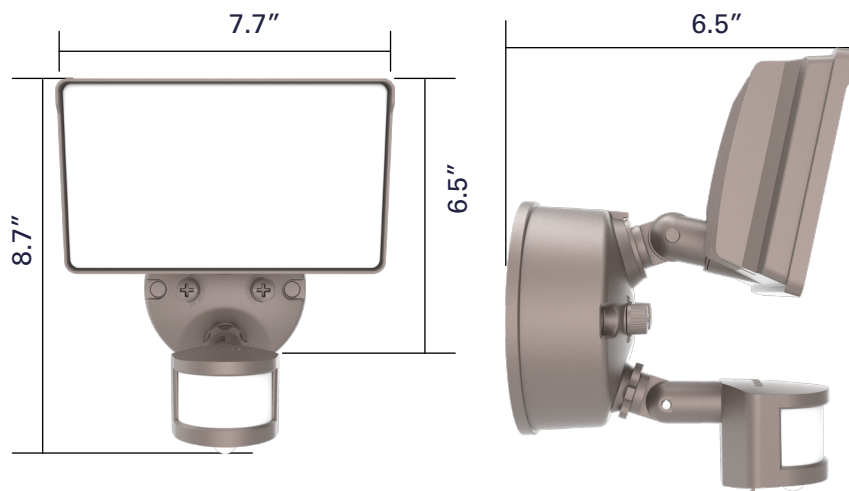
- Backyards
- Garages
- Barns
- General security lighting

PRODUCT DIMENSIONS

FGS HIGH OUTPUT SQUARE SINGLE HEAD - D2D or Switch Activated



FGS HIGH OUTPUT SQUARE SINGLE HEAD - Motion Activated



ORDER INFORMATION

Catalog Number	Description	UPC	Material no.	Case Qty	Case Dimensions (in.)			Weight (lbs)
					L	W	H	
FGS30CLD2DB	SECURE SQ 3KLM SEL 5CCT 120V D2D BRONZE	080083292936	13665576	4	10.83	10.83	6.69	5.87
FGS30CLD2DW	SECURE SQ 3KLM SEL 5CCT 120V D2D WHITE	080083292943	13665577	4	10.83	10.83	6.69	5.87
FGS60CLMTNB	SECURE SQ 6KLM SEL 5CCT UNV MTN BRONZE	080083292967	13665579	4	13.58	13.58	8.07	10.34
FGS60CLMTNW	SECURE SQ 6KLM SEL 5CCT UNV MTN WHITE	080083292950	13665578	4	13.58	13.58	8.07	10.34

Don't see a product listed here? Ask about our Made to Order options for even more configurations

PRODUCT SPECIFICATIONS

Construction

- Durable die-cast aluminum heads suitable for wet locations
- Powder coat finish on the die-cast heads.
- Tool-less head and motion sensor adjustment

Installation

- Mounts to wall or eave on most standard 4" Round & Octagon recessed junction boxes, using two screws and mounting bracket hardware included in the box
- Quick Connect wiring harness system makes wiring simple without requiring wire nuts
- Optional Accessory Mounting plate kit used when mounting to surface-mounted junction boxes. (Sold separately.)

Optics

- Adjustable Brightness Lumen Select feature can toggle between Three outputs, low - medium - high using rotatable dial on the fixture housing
- Super Bright High Output of 6000 lumens great for residential and commercial applications.
- Wide UV resistant PC lens distributes light efficiently and won't yellow over time

Electrical

- Electrical operating voltage
 - FGS30 series- 120V, 60Hz
 - FGS60 series- 120-277V, 50/60Hz
- THD<20% & Power Factor > .90
- Built to last with maintenance-free LEDs with 50,000 hours of life
- 5 Selectable light color temperature settings – 3000/3500/4000/5000/6500K
- 80CRI renders colors accurately
- Fixture operating temperature of -40°C to 40°C

Controls

DUSK TO DAWN SKUS

- 180° detection radius up to 50' range, with adjustable sensitivity and duration from 30 seconds - 12 minutes.
- Integral photocell allows for nighttime ON / daytime OFF operation. Photocell can be turned on or off by using rotatable cap

MOTION ACTIVATED SKUS

- Selectable standby dimming level, when motion no longer detected light will dim down to a selected level and can be field configured from 0% to 100%

Compliance and Certifications

- UL certified for US and Canada for wet locations
- EMI/RFI emissions per FCC 47CFR Part 15B
- Contains no mercury or lead and RoHS compliant.
- Photometric testing in accordance with IES LM-79-08 Lumen maintenance projections in accordance with IES LM-80-08 and TM-21-11
- Meets CA Prop 65
- Can be used to meet Title 24 Residential and Non-Residential

Finish

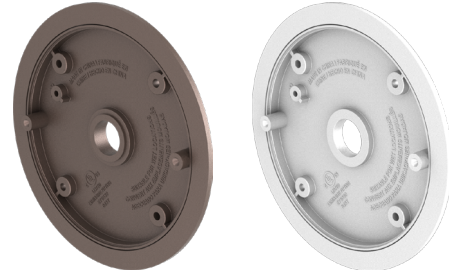
- Textured Bronze/ White Finish

Warranty

- [Five year limited warranty.](#) consult website for details. www.cooperlighting.com

ACCESSORIES (SOLD SEPARATELY)

Catalog Number	Description
TGS5S-KIT-MTGWH (*)	MOUNTING ADAPTER PLATE KIT TGS5S WHITE
TGS5S-KIT-MTGBZ (*)	MOUNTING ADAPTER PLATE KIT TGS5S BRONZE

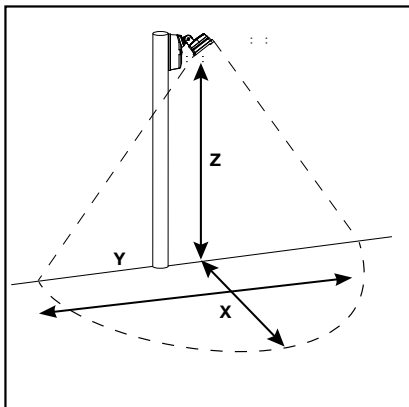


NOTE: Mounting plates are to be used in Surface Mounting applications when the Junction box is surface mounted and NOT recessed.

PHOTOMETRIC DATA

Catalog#	Setting	Power (W)	Lumens Low/Med/ High	Efficacy (High)	CCT	Voltage	Life Span	Controls
FGS30CLD2DB FGS30CLD2DW	Low	12	2000	>75	Selectable (3000, 3500, 4000, 5000, 6500K)	120V	50,000 hrs	Dusk to Dawn Photocell can be turned on or off
	Medium	18	2500					
	high	27	3000					
FGS60CLMTNB FGS60CLMTNW	Low	18	2000	>75	Selectable (3000, 3500, 4000, 5000, 6500K)	120- 277V	50,000 hrs	Motion with Standby Dim Level Selection
	Medium	28	4000					
	high	45	6000					

SUGGESTED MOUNTING HEIGHT



Minimum Footcandles (FC)		0.50 FC					
Mounting Height (Z)		8'		10'		15'	
Catalog Number	Lumens	X	Y	X	Y	X	Y
FGS30CLD2DB FGS30CLD2DW	1723	13.9	33.1	14.7	33.8	17.8	36.7
	2723	15.2	34.9	16.8	37.3	23.2	46.2
	3632	15.9	36.8	18.7	40.2	24.5	47.6
FGS60CLMTNB FGS60CLMTNW	2760	14.4	33.3	17.6	39.9	20	44.8
	4373	18.2	45.3	19.4	45.9	24.8	61.8
	6667	17.8	42	19.6	51.4	24.8	55.2

X = Forward Throw
Y = Wall Spread
Z = Mounting Heights

Notes:
Forward throw X = 1/2 Y for wall-mount applications only
See IES files for detailed photometry