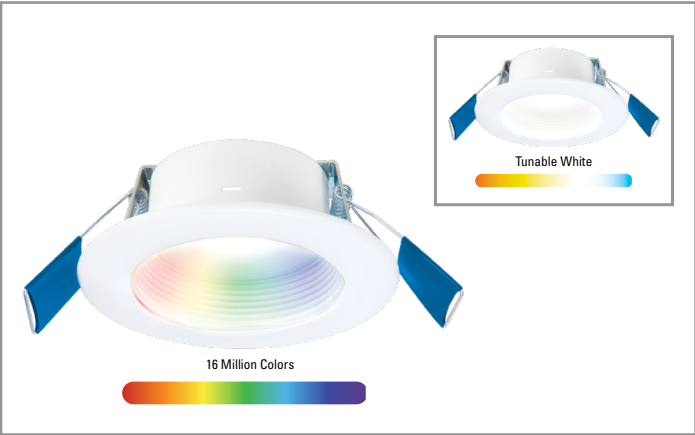



Project		Catalog #		Type	
Prepared by		Notes		Date	



 **Interactive Menu**

- [Order Information](#) page 2
- [Product Warranty](#) page 4
- [Product Specifications](#) page 4
- [Photometric Data](#) page 5
- [Energy & Performance Data](#) page 5

Connected by

HALO

WiZ
PRO

RL4 | 4-inch Smart Wi-Fi® Recessed Canless LED Downlight Connected by WiZ Pro

4-inch Recessed Baffle Canless LED Downlight with remote junction box and smart WiFi® control. Experience full color & tunable white, wireless dimming, schedules, scenes, rhythms, and SpaceSense™ motion detection thanks to Connected by WiZ Pro technology.


Typical Applications


Residential


Top Product Features


- Round 4" Smart Wi-Fi® Canless LED Downlight suitable for remodel and new construction installations (For new construction, use with canless mounting frames/plates)
- White tuning (2200K - 6500K) + 16 million colors + wireless dimming to 5% (120V input) all via the WiZ App; 90+ CRI (do not use with standard dimmers)
- Set schedules, scenes, static/dynamic lighting modes, rhythms, music sync, and SpaceSense™ technology that turns your lights into motion sensors, so they turn on with movement
- Configure and control lighting quickly with the WiZ App over Wi-Fi®
- Pro Installers can use the WiZ Pro Setup App to manage multiple projects, pair over Bluetooth, and access advanced features in the WiZ Pro Dashboard
- Installs in 2x4 framing and rated for IC (insulation contact) or non-IC applications (no housing required)
- **Lens & Trim:** Recessed baffle trim, curved diffuse lens for low-glare, even illumination
- **Brightness:** 900 lumens (nominal)
- Meets AIR-TITE and code compliance for additional energy savings
- **Life:** 50,000 hrs of maintenance-free operation in damp or wet locations
- 5-year warranty


Product Certification














Refer to ENERGY STAR® Certified Products List.
Can be used to comply with California Title 24 High Efficacy requirements.
Certified to California Appliance Efficiency Database under JAS.

Product Features

 Wireless Dimming

 Wi-Fi + Bluetooth

 Showerlight

90
CRI

Shows Natural Colors

 IC RATED

 airTITE


 NO HOUSING REQUIRED
recessable baffle trim included


 5 YEAR WARRANTY


Product Integrations


Connected by

WiZ
PRO









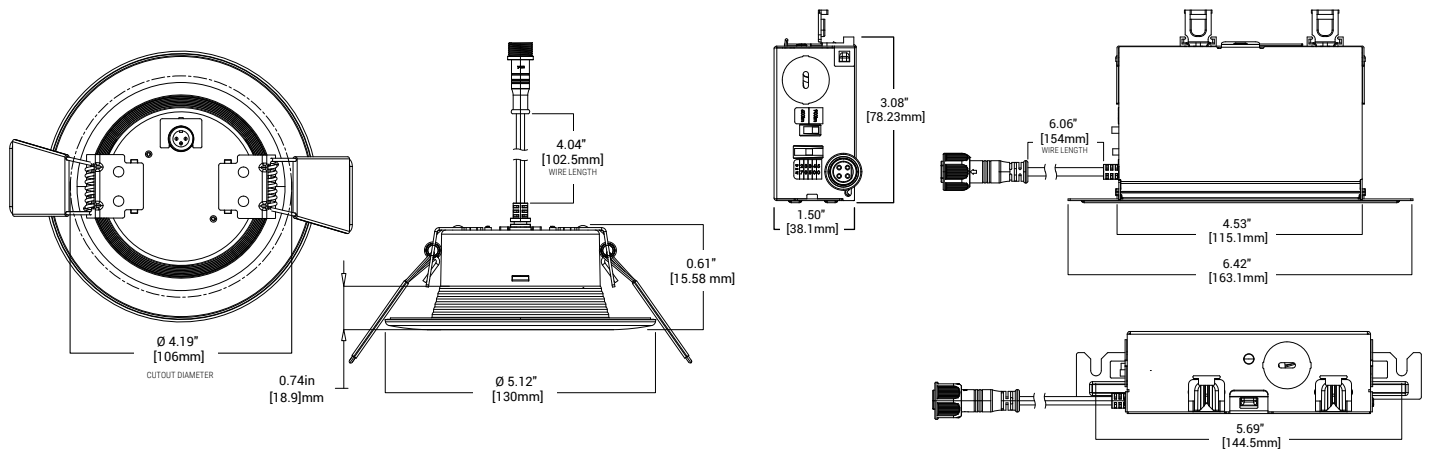
works with alexa

works with Siri Shortcuts

Works with IFTTT

Works with SmartThings

Dimensions



Order Information

Catalog Number	Module	Lumens (Nominal)	CRI/CCT	Driver	Finish	Packaging
RLWZC409	4" Smart Wi-Fi® Recessed Baffle Canless LED Downlight Connected by WiZ Pro	900 lumen	90+ CRI, Full Color (16 million colors) + Tunable White (2200K to 6500K) via WiZ App	120V 60Hz, wireless dimming to 5% (do not use with standard dimmers)	Matte White	Plastic-free & Recyclable

Accessories – New Construction Mounting Frames/Plates (order separately)

Ensure the proper placement and alignment of canless LED downlights in new construction applications. Mounting frames feature adjustable hanger bars, Got Nail™ captive pre-installed nails, and integrated thumb screws for holding canless junction boxes in place to meet code requirements during rough-in wiring.

Catalog Number	Description
MF4RC	4" Round Mounting Frame with 1/2" Drywall Collar
HL4RSMF	4" Round/Square Mounting Frame
SP346RS	3"/4"/6" Round/Square Smash Plate

Accessories – Fixture-to-Junction Box Extension Cable (order separately)

Use HALO Canless Extension Cables (plenum cable) in applications where junction boxes need to be installed further away from the fixture – either for convenience or to save on line-voltage wire. (Co-locating junction boxes makes adjustments and maintenance fast and easy.)

Catalog Number	Description
HLB06BLEEC	6-ft. extension cable
HLB12BLEEC	12-ft. extension cable
HLB20BLEEC	20-ft. extension cable

Order Information

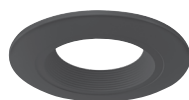
Accessories – Decorative Trim Overlays (order separately)

Add a touch of style and personality to spaces with HALO Decorative Overlays by matching existing hardware or painted finishes

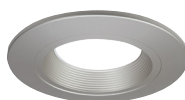
Catalog Number	Description	Finish
RL4TRMWHB	4-inch Baffle Overlay	Paintable Matte White
RL4TRMMBB	4-inch Baffle Overlay	Matte Black
RL4TRMSNB	4-inch Baffle Overlay	Satin Nickel
RL4TRMTBZB	4-inch Baffle Overlay	Tuscan Bronze
RL4TRMWH	4-inch Smooth Splay Overlay	Paintable Matte White
RL4TRMWB	4-inch Smooth Splay Overlay	Matte Black
RL4TRMSN	4-inch Smooth Splay Overlay	Satin Nickel
RL4TRMTBZ	4-inch Smooth Splay Overlay	Tuscan Bronze



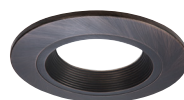
RL4TRMWHB
White (Paintable), Baffle



RL4TRMMBB
Matte Black, Baffle



RL4TRMSNB
Satin Nickel, Baffle



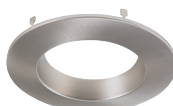
RL4TRMTBZB
Tuscan Bronze, Baffle



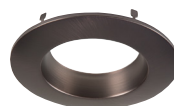
RL4TRMWH
White (Paintable), Splay



RL4TRMWB
Matte Black, Splay



RL4TRMSN
Satin Nickel, Splay



RL4TRMTBZ
Tuscan Bronze, Splay

Product Specifications

Wireless System

- HALO products that are Connected by WiZ Pro can be claimed 2 ways:
 - For standard applications, use the WiZ app and claim over Bluetooth/Wi-Fi®. Learn more at wizconnected.com
 - Professional installers can claim via the WiZ app or the WiZ Pro Setup app. Use the Pro Setup app if no Wi-Fi® has been setup yet, or if the installation is a large-scale project that requires additional features like the WiZ Pro Dashboard. Learn more at pro.wizconnected.com
- The fixtures are compatible with any Connected by WiZ or Connected by WiZ Pro products made by HALO, WiZ or other manufacturers.
- Maximum number of devices per account: 200

WiZ App Setup & Control

- For standard applications, use the WiZ app and claim over Bluetooth/Wi-Fi®
- These products can be claimed and controlled directly within the WiZ app.
- The WiZ app allows for wireless control of lighting from home or away via Wi-Fi®.
- Wirelessly control on/off, white tuning (candlelight 2200K to true daylight 6500K), full color (16-million options), and dimming (100% to 5%) via the WiZ app.
- The WiZ app and WiZ Pro Setup app are Android or Apple iOS compatible with most smartphones and tablets
- Setup homes, rooms, groups, scenes, schedules, rhythms, music sync, and SpaceSense™ motion detection to automate your smart home lighting.
- Integrates with Matter, Amazon Alexa, Hey Google, Apple HomeKit, Siri Shortcuts, IFTTT, and SmartThings
- Learn more at wizconnected.com

WiZ PRO Control

- HALO with WiZ PRO also has claiming and account management features designed for the pro installer.
- Pros can use the WiZ Pro Setup App to claim products quickly using pre-Wi-Fi® commissioning and manage multiple jobsites including transferring account ownership.
- The WiZ Pro Dashboard gives professional installers:
 - A clear overview to monitor lighting over a mapped location
 - Full range of configurations and remote control
 - Comprehensive reporting on device status & energy usage
- Learn more about WiZ Pro features and functionality at pro.wizconnected.com

Control & Dimming

- Wireless flicker-free dimming from 100%-5% via the WiZ App
- Fixtures can be controlled via several options:
 - Standard ON/OFF Switches: The WiZclick feature is a secondary control option, which uses your main light switch:
 - Toggle the switch on once to activate Favorite Mode 1
 - Toggle twice for Favorite Mode 2 (Favorite Mode 1 and 2 are editable within the WiZ app)
 - Wired hot with constant power and controlled via the WiZ app or other Connected by WiZ remote controls (sold by others)

- Wired with other Connected by WiZ in-wall switches/dimmers (sold by others)
- Smart lighting requires full power to receive wireless messages — do not use with standard phase-cut/triac dimmers
- Only compatible with other Connected by WiZ/ WiZ Pro products (not directly compatible with HALO Home, Philips Hue, or any other wireless smart home system)

Module - Trim

- Module construction includes LED array, heat sink, reflector, lens, baffle and trim ring
- Die-cast aluminum regressed baffle trim
- Heat sink designed to conduct heat away from the LED array, keeping the junction temperatures below specified maximums, even when installed in insulated ceiling environments

LED Array

- Mid power LED array provides a uniform source with high efficiency and no pixilation
- 90 CRI minimum, R9 greater than 50
- Color accuracy at 4 SDCM at 2700K and 7SDCM up to 6500K, provide excellent color quality and uniformity
- Full Color RGB LEDs Deliver 16 million color options along with white tuning from 2200K to 6500K color temperature (CCT).
- Factory default color temperature (CCT) is set to soft white (2700K) via the WiZ software

Optical Assembly

- Regressed lens
- Impact-resistant polycarbonate
- Convex form and lamp-like appearance

Remote Driver / Junction Box

- Pre-galvanized steel driver/junction box with captive hinged cover
- Listed for six #12 AWG 90° C splice conductors: two in, two out plus two grounds
- Two 1/2" conduit pry-outs
- Two Slide-N-Side™ non-metallic (NM) wire traps allows wiring outside the box
- Accepts NM cable types: 14-2, 14-3, 12-2, 12-3 (U.S.) and 14-2, 14-3, 12-2 (Canadian)
- Three 4-port push wire nuts with clear caps for quick and reliable mains voltage connections
- Integral mounting holes facilitate direct mounting to building structure or mounting frame
- Plenum rated inline electrical barrel connector provides low voltage connection between remote driver / junction box and fixture (light engine) (CMP/FT6 rated)
- 6-, 12-, and 20-ft extension cables available for centralized junction box installation + additional convenience and savings on line-voltage wire

Driver

- Integral 120V 60 Hz constant current driver provides noise free operation
- Wirelessly Dimmable: Continuous, flicker-free dimming from 100% to 5% output via the WiZ app, voice control, and other Connected by WiZ controls (sold by others)

Gaskets

- Closed cell gaskets achieve restrictive airflow requirements without additional caulking

Retention & Installation

- No additional housing or junction box required

(not for installation in recessed cans)

- The included fixture (light engine) and remote driver / junction box may be used in direct contact with insulation
- Can be installed in 1/2" to 1-1/4" thick ceilings
- Cutout utilizes standard round hole saw sizes; cutout template provided
- Heat treated springs hold fixture fitting securely in the ceiling eliminating light leak
- Installer must cut hole and install fixture into aperture with the clips compressed

Hole Saw Sizing	Min to Max
4"	3-3/4" to 4-1/4"

- When released, the spring clips will rest on the back side of the ceiling material holding the fixture in place
- Can be removed from below the ceiling for service or replacement
- For new construction applications, use HALO Canless Mounting Frames or Smash Plates prior to drywall installation

Optional Mounting Frame

- Pre-galvanized steel mounting frame locates fixture fittings during electrical rough-in and provides cutout guidance for drywall contractor
- Provides attachment of remote driver/junction box

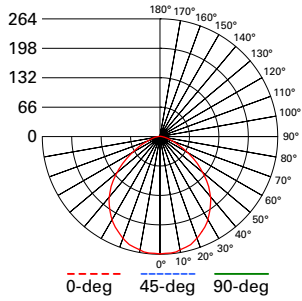
Compliance

- UL Certified US and Canada Type IC suitable for direct contact with air permeable insulation
- Wet and Damp location listed. Not for use in direct contact with spray foam insulation, reference NEMA LSD57-2013
- Airtight certified per ASTM-E283
- EMI/RFI emissions per FCC 47CFR Part 15 consumer limits
- Contains no mercury or lead and RoHS compliant
- Photometric testing in accordance with IES LM-79-08
- Lumen maintenance projections in accordance with IES LM-80-08 and TM-21-11
- Can be used for State of California Title 24 high efficacy luminaire compliance. Complies with Title 24 JA8-2022-E.
- Can be used International Energy Conservation Code (IECC) high efficiency luminaire compliance.
- ENERGY STAR® listed, reference database for current listings

Warranty

- Five-year limited warranty, consult website for details. www.cooperlighting.com/warranty

Photometric Data



RLWZC612 (2700K)

Spacing criterion (0/90/45):

1.21 / 1.21 / 1.29

Beam Angle: 99°

Field Angle: 145°

Lumens: 935

Input Watts: 10.4 W

Efficacy: 89.9 LPW

Test Report:

RLWZC409-2700K.ies

Zonal Lumen	Lumens	% Lumens
0-30	308	32.9
0-40	494	52.8
0-60	815	87.1
0-90	935	100
90-180	0	0
0-180	935	100

TM-30-15	Rf = 91
	Rg = 102
CRI/CIE	Ra = 94
	R9 = 73

CCT - Range of 2200K- 6500K

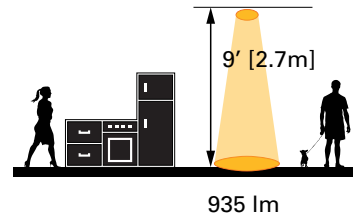


99°

Energy and Performance Data

RLWZC612	
Lumens	900 @ 2700K
Input Voltage	120V
Input Frequency	60Hz
Input Power	10W
Input Current	0.084A
Power Factor	>0.90
THD	<20%
EMI/RFI	"FCCTitle 47 CFR, Part 15, Class B (consumer)"
Sound Rating	Class A
Minimum Starting Temp	-30°C (-22°F)

Scale



Tested in accordance with IES LM63. Field results may vary.