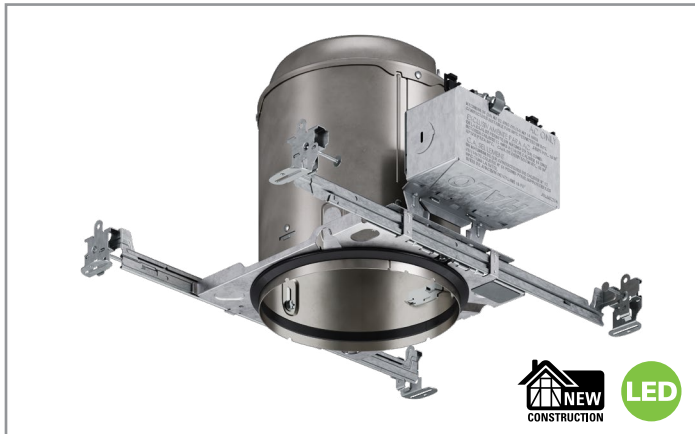


Project		Catalog #		Type	
Prepared by		Notes		Date	



HALO

H750ICAT

6" IC, LED Housing, LED Trims and Modules, New Construction

The H750ICAT recessed is a 6" aperture new construction housing for both light commercial and residential 2x8 framing applications. The H750ICAT features an Air-Tite full-frame design, robust construction, feed-through listing, Got Nail!® Bar Hangers; and is available for insulated ceiling (IC) environments. A wide variety of HALO LED Trims and Modules can be installed in this housing.

Typical Applications Residential • Light Commercial

Interactive Menu

- Order Information page 2
- Product Specification page 3
- Product Warranty

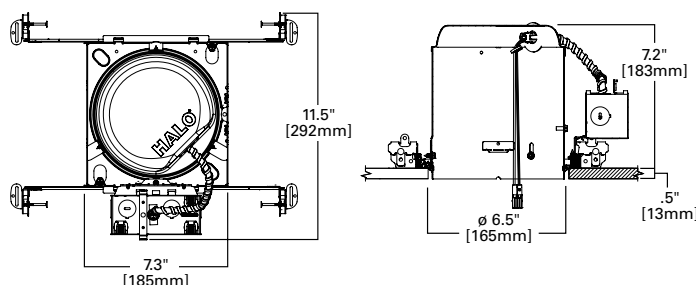


Top Product Features

- Got Nail!™ Bar Hanger with pre-installed nail, automatic leveling flange, and more great features
- Q-Channel bars with Pass-N-Thru™ increase rigidity and stability, while allowing for tool-less shortening
- Plaster Frame with regressed locking screws for locking Bar Hangers and housing adjustment to accommodate up to 1" ceiling thickness
- Junction box with multiple 1/2" knockouts for conduit and Slide-N-Side™ connectors for non-metallic sheathed cable
- Supports multiple HALO LED Trims and Modules

Dimensional and Mounting Details








H750ICAT






Order Information

Catalog Number	Description	Input Voltage	Socket Type
H750ICAT	6" IC, LED, Air-Tite, New Construction Housing, with push-in connectors	120V	LED Orange Connector

LED Trims

Downlights							
							
LTE Recessed Baffle LED Trim	LT Recessed Baffle LED Trim	HLBT Slim LED Trim	CJB Integrated JBox Downlight	RL Recessed Baffle LED Trim	RSQ Square Recessed Baffle LED Trim	RLD Recessed Deep Baffle LED Trim	ML56 Series

Adjustable		
		
LA All-Purpose LED Adjustable LED Trim	RA Recessed Adjustable LED Trim	ML56 Series

Specialty		
		
Night Light Recessed LED Trim	RL Smart Wi-Fi Recessed LED Trim	RL Dual Zone Smart Wi-Fi Recessed LED Trim

Product Specifications

Housing

- Single wall aluminum construction
- Precision rolled interlocking collar maintains aperture geometry for greater assurance of installation results
- V notches facilitate use of guide strings or laser lines for precise positioning
- Shipped with paint overspray protector installed
- Exclusive AIR-TITE™ gasket meets code where required; Seals between housing, frame and finished ceiling (without need for additional caulk)
- May be removed from below the ceiling the plaster frame to provide access to junction box
- Designed for insulated ceilings in direct contact with insulation (may also be installed in non-insulated ceilings)

Plaster Frame

- Housing adjusts in plaster frame to accommodate 3/8" to 1" ceiling thickness
- Galvanized steel construction
- Plaster frame features include
 - Regressed locking screw for securing hanger bars
 - Cutouts for easily crimping hanger bars in position
 - HALO name embossed on plaster frame
 - The housing may be removed from plaster frame to provide access to the junction box
 - Pre-installed Air-Tite ready ceiling contact gasket

Got Nail!™ Bar Hanger Bracket

Bar Hanger Features include:

- Pre-installed nail easily installs in regular lumber, engineered lumber and laminated beams
- Safety and guidance system prevents snagging, ensures smooth straight nail penetration and allows bar hangers to be easily removed if necessary
- Automatic leveling flange aligns the housing and lets you hold the housing in place with one hand while driving nails
- Five additional mounting points
- Mounting point on top for hanger wire connection
- Integral T-bar clips snaps onto T-bars -no additional clips required

q-Channel bars with Pass-NThru™

- q-Channel bars feature a unique inverted "q" interlocking channel for rigidity and stability
- Pass-N-Thru™ feature allows bars to cross-over for tool-less shortening in tight spaces less than 12" without removing from the plaster frame.
- Push bars together and flex at score hole break points
- Housing can be positioned at any point within 24" joist span

Slide-N-Side™ Repositioning Junction Box

- Hinged and captive door for easy access
- Repositionable J-box can be moved to alternate side of frame to avoid obstructions
- Three Slide-N-Side™ wire traps allow non-metallic(NM) sheathed cable to be installed without tools or without removing knockouts
- Allows wiring connections to be made outside the junction box
- Simply insert the cable directly into the trap after connections are made
- Accommodates the following standard non-metallic (NM) sheathed cable types for both U.S. and Canada: (US) #14/2, #14/3, #12/2, #12/3; (Canada) #14/2, #14/3, #12/2
- Four 1/2" conduit pry-outs. Two of these accommodate straight thru conduit runs.
- cULus Listed compact 16 in³ box volume; listed for maximum ten No. 12 AWG or fourteen No. 14 AWG 90° C splice conductors in the box

Quick Connect™ Push Wire Nuts

- Three 4-port push-in "Quick Connect" wire nuts included
- Speeds installation and increases reliability
- Simply strip and insert supply wires
- No additional wire nuts required

Universal Locking Screw

- Two recessed locking screw accessible from below the ceiling to secure bar hanger length
- Recessed locking screws accessible from below the ceiling to move the housing up and down to adjust for ceiling thickness.
- Universal screw head (hex, slot or Phillips)

LED Connector

- Two-conductor wire mount connector is rated for 120-277V CAUTION – verify LED module input voltage is compatible with the input voltage of the housing. If uncertain, consult a qualified electrician
- cULus listed with HALO LT, LA, RL, RA, HLBT, CJB and ML LED Trims and Modules as well as SMD, SMX surface mount products

Compliance

- Type IC inherently protected, suitable for direct contact to air permeable insulation and cULus listed for damp locations
 - Not for use in direct contact with spray foam insulation, consult NEMA LSD57-2013
 - Wet location listed in covered ceilings and IP56 certified with select trims
 - cULus Listed 1598 luminaire
 - cULus Listed damp location
 - cULus Listed for wet location, covered ceiling with select trims
 - cULus Listed for feed through
 - cULus Listed for direct contact with insulation and combustible material*
 - Certified under ASTM E283 (gasket included) AIR-TITE™ code compliant; Not exceeding 2.0 cfm (0.944 L/s) air leakage rate tested at a 1.57 psf (75 Pa) pressure differential
 - Can be used for State of California Title 24 high efficacy luminaire compliance
 - Suitable for use in clothes closets when installed in accordance with the NEC 410.16 spacing requirements
 - Contains no mercury or lead and RoHS compliant
 - Options to meet Trade Agreements Act requirements
- * Not to be used in direct contact with spray foam insulation (consult NEMA LSD57-2013)

Warranty

- Five-year limited warranty, consult website for details. www.cooperlighting.com/warranty