

Project		Catalog #		Type	
Prepared by		Notes		Date	



HALO

H4RTATSB

H4 4" Traditional Socket-Based Remodel Recessed Housings – Non-IC Rated

The H4R is ideal for both commercial and residential remodel applications and feature an AIR-TITE™ design, robust construction, Slide-N-Side™ Wire Traps, and KOs. The H4R can be installed in non-insulated ceilings and is E26 socket-based – making it compatible with all 4-inch HALO LED Trims and Traditional Trims for use with lamps (light bulbs).

Typical Applications Residential • Light Commercial

Interactive Menu

- Order Information page 2
- Product Specification page 3
- Product Warranty

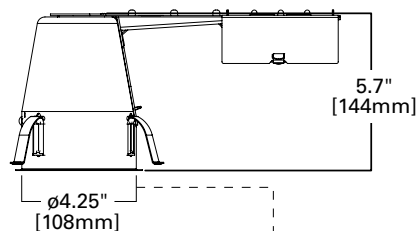
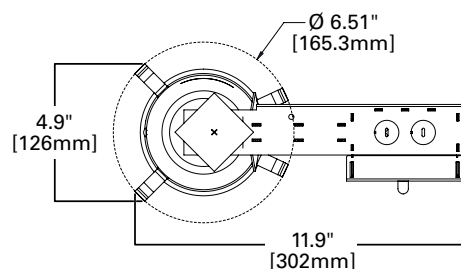


Top Product Features

- Ideal for remodel installation in both commercial and residential applications
- Non-IC and AIR-TITE™ to meet most regional installation requirements
- Junction box with Slide-N-Side™ Wire Traps for fast wiring of non-metallic sheathed cable along with multiple 1/2" knockouts for conduit
- Compatible with all 4" HALO LED Trims and Traditional Trims for use with multiple lamp/light bulb types

Dimensional and Mounting Details

H4RTATSB



Ceiling opening to match template supplied

Cutout Dimension




4-1/4"
(108mm)

Order Information

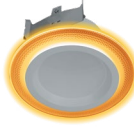


Catalog Number	Description	IC Rating (Insulation Contact)	AIR-TITE™	Bracket	Framing (Plenum Space)	Connection (E26 Socket or Orange LED Quick Connect)	Slide-N-Side™ Wire Traps	1/2" KOs (Knockouts)	Wiring (4-port Push-in Connectors)	Input Voltage
H4RTATSB	H4 4" Remodel Recessed Housing		•	•	2x6	E26 Medium Base Socket	0	3	3	120V

Complete your downlights with HALO Recessed LED Trims

(LED Trims sold separately and include E26 Socket Adapter)

Downlights					
					
LTE Recessed LED Trims 4", 5"/6"	LT Recessed LED Trims 4", 5"/6"	RL Recessed LED Trims 3", 4", 5"/6"	RSQ Square Recessed LED Trims 4", 5", 6"	RLD Deep Baffle Recessed LED Trims 4", 5"/6"	ML4 Recessed LED Modules + Trims 4"

Adjustable	
	
LA Recessed Adjustable Gimbal LED Trims 4", 5"/6"	RA Recessed Adjustable Gimbal LED Trims 3", 4", 5"/6"

Specialty		
		
Night Light Recessed LED Trims 4", 5"/6"	RL Smart Wi-Fi® Recessed LED Trims 4", 5"/6"	RL Dual Zone Smart Wi-Fi® Recessed LED Trims 4", 5"/6"

Traditional Trims

Traditional Trims for use with lamps (light bulbs)			
Reflectors	Baffles	Adjustables	Lens/Wet Location
999P = Specular Clear Reflector, White Trim 999SN = Satin Nickel Reflector, Satin Nickel Trim 999TBZ = Tuscan Bronze Reflector, Tuscan Bronze Trim	953P = 4" Precision Metal Black Baffle, White Trim 953SN = 4" Precision Metal Satin Nickel Baffle, Satin Nickel Trim	996P = 4" White Eyeball, White Trim, 15 Degree Tilt (PAR 20 Lamp) 996SN = 4" Satin Nickel Eyeball, Satin Nickel Trim, 15 Degree Tilt (PAR 20 Lamp) 996TBZ = 4" Tuscan Bronze Eyeball, Tuscan Bronze Trim, 15 Degree Tilt (PAR 20 Lamp)	951PS = 4" Prismatic Glass Lens with full Cone Reflector, White Trim 951SNS = 4" Prismatic Glass Lens with full Cone Reflector, Satin Nickel Trim
4003SC = 4" Specular Reflector, White Trim	993P = 4" Coilex Black Baffle, White Trim 993SN = 4" Coilex Black Baffle, Satin Nickel Trim 993W = 4" Coilex White Baffle, White Trim	998P = 4" White Eyeball, White Trim, 30 Degree Tilt (PAR16 Lamp) 998SN = 4" Satin Nickel Eyeball, Satin Nickel Trim, 30 Degree Tilt (PAR16 Lamp) 998TBZ = 4" Tuscan Bronze Eyeball, Tuscan Bronze Trim, 30 Degree Tilt (PAR16 Lamp)	4055WH = 4" Prismatic Glass Lens with Cut-Cone Reflector, White Plastic Trim
	4001WB = 4" White Plastic Step Baffle, White Trim 4001BB = 4" Black Plastic Step Baffle, White Trim	4002WH = 4" White Eyeball, White Trim, 30 Degree Tilt (PAR 16 Lamp)	
	4013WB = 4" White Full Cone Baffle, White Self Flange Trim		

Product Specifications

Housing

- Die-formed CRS
- Precision rolled interlocking collar maintains aperture geometry for greater assurance of installation results
- Exclusive AIR-TITE™ gasket meets code where required; Seals between housing, and finished ceiling (without need for additional caulk)
- Non-IC Rated Housings are not designed for direct contact with insulation and can be installed in non-insulated ceilings only.
- For installation from below the finished ceiling. Integral flange secures fixture against ceiling.

Remodel Flange

- Die formed flange maintains precise whole circumference
- Integral flange secures fixture against the ceiling

Socket Plate

- Rigid construction Adjusts and locks without tools for various lamp sizes
- Socket plate and bracket may be removed when using socket supporting trims

Socket

- Porcelain E26 medium-based socket with nickel plated brass screw shell
- Snap-in springs secure socket to socket plate, and may be detached when using socket supporting trims
- Included overspray protector keeps socket clean during construction
-

Remodel Retention System

- Four remodel springs secure housing and accommodate 1/2" and 5/8" ceiling material

Slide-N-Side™ Repositioning Junction Box

- Hinged and captive door for easy access
- Seven 1/2" conduit pry-outs with true pry-out slots
- Four pry-outs with integral strain relief simplify "NM" non-metallic sheathed cable installation
 - Allows wiring connections to be made outside the junction box
 - Simply insert the cable directly into the trap after connections are made
 - Accommodates the following standard non-metallic (NM) sheathed cable types for both U.S. and Canada: (US) #14/2, #14/3, #12/2, #12/3; (Canada) #14/2, #14/3, #12/2

Quick Connect™ Push-in Wire Nuts

- Three 4-port push-in "Quick Connect" wire nuts pre-installed
- Speeds installation and increases reliability
- Simply strip and insert supply wires
- No additional wire nuts required

Thermal Protector

- Self-resetting
- Deactivates fixture if overheating occurs due to improper lamping or misapplied insulation

Trims

- HALO Fit-All concept offers multiple trim options in a variety of design styles and functional beam distributions to control beam angle and lumen delivery in accommodating various light sources: LED Trims or lamps (light bulbs: LED, halogen, CFL (compact fluorescent), and incandescent)

Compliance

- Not for use in direct contact with spray foam insulation, consult NEMA LSD57-2013
 - Wet location listed in covered ceilings and IP56 certified with select trims
 - cULus Listed 1598 luminaire
 - cULus Listed damp location
 - cULus Listed for wet location, covered ceiling with select trims
 - cULus Listed for feed through
 - cULus Listed for direct contact with insulation and combustible material*
 - Certified under ASTM E283 (gasket included)
 - AIR-TITE™ code compliant; Not exceeding 2.0 cfm (0.944 L/s) air leakage rate tested at a 1.57 psf (75 Pa) pressure differential
 - RoHS compliant
 - Options to meet Trade Agreements Act requirements
- *Not to be used in direct contact with spray foam insulation (consult NEMA LSD57-2013)

Warranty

- Five-year limited warranty, consult website for details. www.cooperlighting.com/warranty