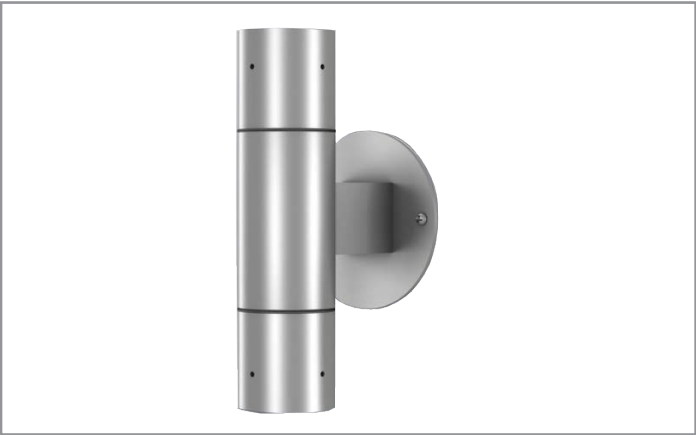


Project		Catalog #		Type	
Prepared by		Notes		Date	



Lumière

Westwood 904

Wall Mount Cylinder

Typical Applications

- Outdoor Wall • Architectural • Commercial Landscape • Hospitality
- Multi-family • Residential • Education

- Interactive Menu**
- Order Information page 2
 - Product Specifications page 3
 - Westwood 904 Photometric data page 3

Top Product Features

- Single or dual direction for downlight, uplight, or both
- Precision machined aluminum construction, natural metals available
- Mounts direct to wall or to a 4" J-box
- Powered by a remote 12V transformer, sold separately
- S.P.S. Siphon Protection System
- Holds up to 3 optical accessories

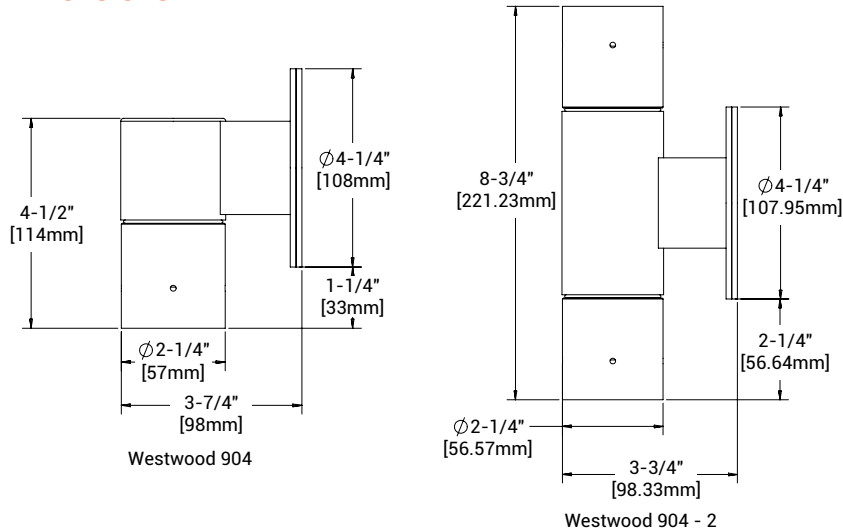
Product Certification



Product Features



Dimensions



Note: Specifications and Dimensions subject to change without notice. Consult your representative for additional options and finishes.

Order Information

SAMPLE ORDER NUMBER:

Domestic Preferences	Series	Source (for LED, select from each column and combine)	Voltage	Finish		
Domestic Preferences ¹	Series	Source (for LED, select from each column and combine)	Voltage ²	Finish ³		
[Blank] =Standard BAA =Buy American Act	904 =LED Westwood Up or Down Wall Fixture Single 904-2 =MR16 Westwood Up/Down Wall Fixture-Dual Head Round 904-UD =LED Westwood Up/Down Wall Fixture-Dual Head, Round 904-SQ-2 =MR16 Westwood Up/Down Wall Fixture-Single Head, Square 904-SQ-UD =LED Westwood Up/Down Wall Fixture-Dual Head, Square	50MR16 =50W max. Halogen MR16 (lamp not included)		12 =12V	Painted BK =Black BZ =Bronze CS =City Silver VE =Verde WT =White	
		8LED =8W LED lamp included	27 =2700K 30 =3000K 40 =4000K			10 =10° Spot 25 =25° Narrow 36 =36° Wide
		5LED =5W LED lamp included	AM =Amber (585-595nm)			25 =25° Narrow
Notes (1) Only product configurations with this designated prefix are built to be compliant with the Buy American Act of 1933 (BAA). Please see the Compliance section in Product Specifications for more detail.	Notes	Notes		Notes (2) Consult factory for other voltages	Notes (3) Consult factory for premium/natural metals material finish. Minimum order quantity of 5.	

Optical Accessories - Order Separately

Filters (2.00" Diameter)	Optical Lenses (2.00" Diameter)	Optical Louvers (2.00" Diameter)
Filters (2.00" Diameter) ⁴	Optical Lenses (2.00" Diameter)	Optical Louvers (2.00" Diameter)
F71 =Peach Dichroic F72 =Amber Dichroic F73 =Green Dichroic F74 =Medium Blue F75 =Yellow Dichroic F76 =Red Dichroic F77 =Dark Blue Dichroic F78 =Light Blue Dichroic F79 =Neutral Density Dichroic F80 =Magenta Dichroic F22 =Red Color F33 =Blue Color F44 =Green Color F55 =Yellow Color F66 =Mercury Vapor	LSL =Linear Spread Lens (elongates standard beam spread) DIF =Diffused lens (provides even illumination) OSL =Overall Spread Lens (increases standard beam spread)	LVR =45° Hex Cell Louver (reduces glare)
Notes	Notes	Notes
(4) Accessories sold separately will be separately analyzed under domestic preference requirements. Consult factory for further information.		

Product Specifications

Material

- Housing and hood are precision-machined from corrosion-resistant 6061-T6 billet aluminum
- Mounting canopy made from corrosion-resistant cast aluminum
- Contact the factory for natural metals finishes such as brass and copper. Minimum order quantities and extended lead times may apply

Finish

- Fixtures constructed from 6061-T6 aluminum are double protected by an ROHS+ compliant chemical film undercoating and polyester powdercoat paint finish, surpassing the rigorous demands of the outdoor environment
- Available in Lumière's standard paint finishes. Natural metals are left unpainted to reveal their natural beauty and will patina over time

Hood

- Hood threads onto housing giving quick access to lamps
- Weep holes prevent water collection on the uplight position
- Accepts up to 3 internal accessories at once. Lenses, louvers, and filter are available from Lumière to achieve desired lighting effects

Gasket

- Housing and hood are sealed with a high temperature silicone o-ring gasket to prevent water intrusion

Lens

- Tempered glass lens, factory sealed with high temperature adhesive to prevent water intrusion and breakage due to thermal shock

Mounting

- Both models mount directly to the wall surface or over a standard 4" junction box and require a remote step-down transformer (not included)
- Model 904 is single direction and can be oriented to provide downlight or uplight. Model 904-2 is dual direction to provide downlight and uplight

Hardware

- Stainless steel hardware is standard to provide maximum corrosion-resistance

Electrical

- Remote 12V transformer required (not included). Initial power draw on LED equipped fixtures is 12 watts per lamp. When sizing transformer use 12 watts per LED lamp
- Nominal power draw after start up is 8 watts.
- LEDs are more voltage sensitive than standard halogen MR16 lamps
- Ceramic socket with 250° C Teflon® coated lead wires and GU5.3 bi-pin base
- The LED module is designed to operate within the range 12V +/- 1.2V. Any less or more voltage can cause premature failures
- Lumière's exclusive Siphon Protection System (S.P.S.) prevents water from siphoning into the fixture through its own lead wires

Lamp

- Halogen lamp not included
- LED lamp supplied in various CCT options including 595nm Amber. Must specify CCT and beam angle when ordering
- 2700K and 3000K lamps are 90CRI. 4000K lamps are 95CRI

Compliance

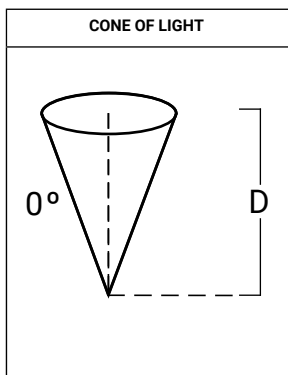
- UL and cUL listed, standard wet label
- IP65 rated
- Manufactured to ISO 9001-2000 Quality Systems Standard
- Please refer to the [DOMESTIC PREFERENCES](#) website or consult the CLS Domestic Preferences team for more information. Components shipped separately may be separately analyze under domestic preference requirements

Warranty

- Lumière warrants its fixtures against defects in materials & workmanship for three (3) years. Auxiliary equipment such as transformers, ballasts and lamps carry the original manufacturer's warranty

Westwood 904 Photometric Data

Horizontal Illuminance on Surface - Westwood 904 Standard Recessed Hood - 50W MR16



Filename	904-50MR16-12-BK-NSP.ies	
Lamp	50W MR16 NSP	
CBCP	11,000	
Distance	FC	Beam Diameter
2'	2550	1'6"
4'	638	1'0"
6'	283	1'6"
8'	159	2'0"
10'	102	3'0"
15'	45	4'0"

Filename	904-50MR16-12-BK-NFL.ies	
Lamp	50W MR16 NFL	
CBCP	3,200	
Distance	FC	Beam Diameter
2'	725	1'0"
4'	181	2'6"
6'	81	4'0"
8'	45	5'0"
10'	29	6'6"
15'	13	10'0"


[View IES files](#)

CCT MULTIPLIER TABLE

LAMP WATTAGE	MULTIPLIER
20W	0.32
35W	0.57

Filename	904-50MR16-12-BK-FL.ies	
Lamp	50W MR16 FL	
CBCP	2,000	
Distance	FC	Beam Diameter
2'	431	1'6"
4'	106	3'0"
6'	48	5'0"
8'	27	6'6"
10'	17	8'0"
15'	7	12'0"

Filename	904-50MR16-12-BK-WFL.ies	
Lamp	50W MR16 WFL	
CBCP	1,200	
Distance	FC	Beam Diameter
2'	269	2'0"
4'	67	4'6"
6'	30	7'6"
8'	17	9'0"
10'	11	11'6"
15'	5	17'0"

NOTES AND FORMULAS

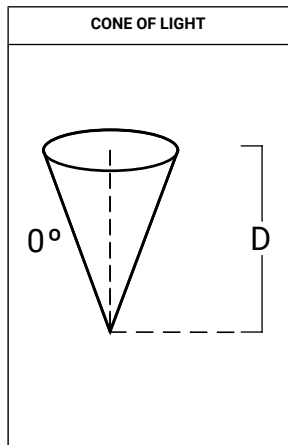
- Beam diameter is to 50% of maximum footcandles, rounded to the nearest half-foot.
- Footcandle values are initial. Apply appropriate light loss factors where necessary.
- Bare lamp data shown. Consult lamp manufacturers to obtain detailed specifications for their lamps.

Westwood 904 Photometric Data

LED Lumen and CBCP Table - 4000K
8W LED View IES files

		Flush Hood			Regressed Hood (Black)			Regressed Hood (Silver)		
		CBCP	LUMENS	LPW	CBCP	LUMENS	LPW	CBCP	LUMENS	LPW
10	BASE	5980	351.3	43.6	5541	298.5	37.1	5052	296.9	39.7
	+DIFF	985	286.9	35.8	968	220.4	27.4	930	233.2	31.2
	+LSL	1310	309.9	38.6	1299	253.1	31.4	1200	252.7	33.8
	+LVR	5270	243	30.6	4838	235.3	29.2	4633	225.1	30.1
	+OSL	1686	328.6	41.4	1700	285.7	35.5	1609	291.1	39
25	BASE	2690	417.2	53.5	2559	374.2	47.4	2357	361.8	49.4
	+DIFF	761	338.6	43.4	729	267.7	33.9	720	281.4	36.2
	+LSL	795	375.1	48.1	778	316.3	40.2	719	312	42.2
	+LVR	2396	285.9	36.7	2294	272.4	34.1	2092	253.3	35.3
	+OSL	1452	383.4	49.1	1414	345	43.8	1328	341.2	45.2
36	BASE	1144	409.2	53.1	1125	369.1	47.6	1080	371.7	49
	+DIFF	542	336.3	43.6	532	264.3	34.1	502	268.6	35.1
	+LSL	486	371.1	48.2	480	305.6	39.4	484	317.4	41.7
	+LVR	1030	267.9	34.8	996	252.1	32.4	967	251.8	33.1
	+OSL	930	384.3	49.9	932	337.8	43.6	910	348.6	45.7

Horizontal Illuminance on Surface - Westwood 904 Standard Recessed Hood - 4000K



Filename: 904-SS-8LED4010-12-BK.IES			
Test No.: G2-1802-569-4			
Distance	FC	Beam Diameter	
2'	1797.1	0.4	
4'	449.3	0.8	
6'	199.7	1.2	
8'	112.3	1.6	
10'	71.9	2	
15'	31.9	3.2	
20'	18	4.2	
30'	8	6.4	
40'	4.5	8.4	

Filename: 904-SS-8LED4025-12-BK.ies			
Test No.: G2-1802-569-5			
Distance	FC	Beam Diameter	
2'	821.4	0.6	
4'	205.3	1.2	
6'	91.3	1.8	
8'	51.3	2.4	
10'	32.9	3	
15'	14.6	4.6	
20'	8.2	6	
30'	3.7	9.2	
40'	2.1	12.2	

Filename: 904-SS-8LED4036-12-BK.ies			
Test No.: G2-1802-569-6			
Distance	FC	Beam Diameter	
2'	361.1	1	
4'	90.3	2.2	
6'	40.1	3.4	
8'	22.6	4.6	
10'	14.4	5.8	
15'	6.4	8.6	
20'	3.6	11.6	
30'	1.6	17.4	
40'	0.9	23.2	

CCT MULTIPLIER TABLE

CCT (K) / COLOR	MULTIPLIER
2700K	.91
3000K	.89
4000K	1

Note: Multiplier can be used to calculate center beam candle power (CBCP), Lumens and footcandle (FC) values.

TECHNICAL INFORMATION

1. Dimming is dependant on remote transformer compatibility with LED module. Please see [compatibility matrix](#) for dimmer switch and transformer selection.
2. IMPORTANT: When sizing transformer use 12 watts per LED fixture. Nominal power draw after start up is 8 watts. Any less or more voltage can cause premature failures.