

DESCRIPTION

The GC Series features a deep para-contoured fixture housing, high reflectivity and optimum lamp to lens spacing. The series produces total uniformity of light in the luminous area and is compatible with all of today's popular ceiling systems and is available with a number of options and accessories for application versatility.

The specification luminaire is designed to offer maximum efficiency and performance for today's unique interior specifications. The GC Series is an excellent choice for commercial office spaces, schools, hospitals or retail merchandising areas.

SPECIFICATION FEATURES

Construction

Deep, para-contoured housing, die formed code gauge, prime cold rolled steel. Die embossed housing has full length die formed stiffeners for added strength. Deep "V" ballast/wireway cover easily removed without tools. Die formed captive lampholder bracket fully encloses lampholder wiring permitting easy lampholder replacement. Heavy endplates are securely attached with interlocking tabs and screws. Four auxiliary fixture end suspension points provided. KOs for continuous row wiring. Endplates have integral Grid-Lock feature for safety and convenience.

Electrical*

Ballasts are CBM/ETL Class "P" and are positively secured by mounting bolts. Pressure lock lampholders. UL/CUL listed. Suitable for damp locations.**

Finish

Multistage, iron phosphate pretreatment ensures maximum bonding and rust inhibitor. Lighting grade, baked white enamel finish.

Hinging/Latching

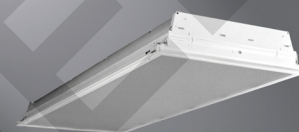
Positive Cam latch with baked enamel finish. Safety-lock T-hinges allow hinging and latching either side.

Frame/Shielding

Die formed, heavy gauge, flat steel door with reinforced mitered corners and baked white enamel finish. Positive light seals. Light stabilized 100% virgin acrylic prismatic shielding. Standard #12 pattern. Optional shielding available.

Controls

Fifth Light ballast options are offered for both 0-10V continuous dimming and DALI applications. Combine with energy-saving products like occupancy sensors, daylighting controls, and lighting relay panels from Cooper Controls (www.coopercontrol.com) to maximize energy savings.

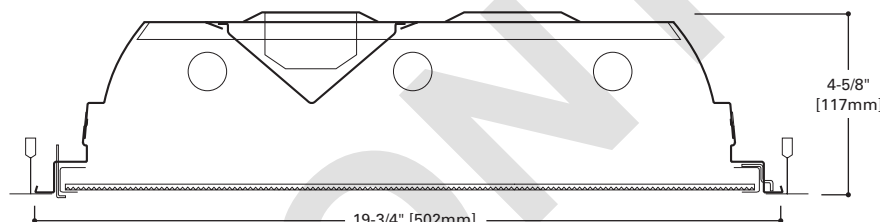


GC2048
328T8
332

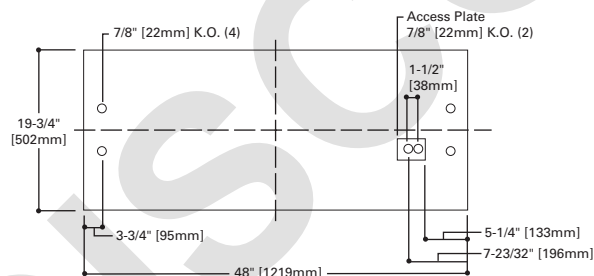
20" X 48" TROFFER
3 LAMPS

Specification Deep Troffer

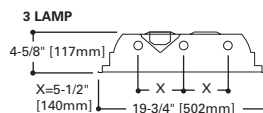
powered by
fifthlight
technology



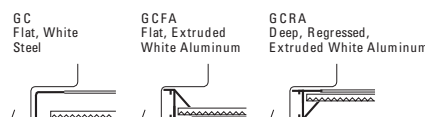
MOUNTING DATA



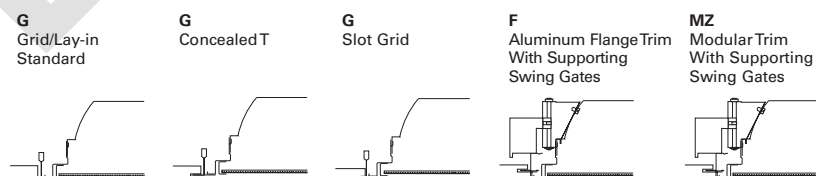
LAMP CONFIGURATIONS



DOOR FRAMES



CEILING COMPATIBILITY



Ceiling Type	Trim Type
Exposed Grid	G
Concealed T	G
Slot Grid	G
Flange	F
Concealed "T" or "Z"	MZ
Metal Pan	MZ

(Verify compatibility/ consult Pre Sales Technical Support.)

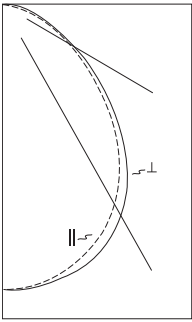
ENERGY DATA

Input Watts:
EB Ballast & STD Lamps
328T8 (67)
332 (81)
Luminaire Efficacy Rating
LER = FL-66
Catalog Number: GC2048-332
Yearly Cost of 1000 lumens,
3000 hrs at .08 KWH = \$3.64

*Reference the lamp/ballast data in the Technical Section for specific lamp/ballast requirements.
**Consult Pre Sales Technical Support.

LINEAR DISCONNECT
Designed to provide safe and convenient means of disconnecting power

PHOTOMETRICS

**GC2048-332A**

Electronic Ballast

FO32T8/35K Lamps
2800 LumensSpacing criterion:
(II) 1.2 x mounting
height, (L) 1.3 x
mounting height

Efficiency 75.5%

Test Report:
GC2048332A.IES

LER = FL-66

Yearly Cost of 1000
lumens, 3000 hrs at
.08 KWH = \$3.64**Coefficients of Utilization**

Effective floor cavity reflectance										20%													
rc	80%				70%				50%				30%				10%				0%		
rw	70	50	30	10	70	50	30	10	50	30	10	50	30	10	50	30	10	0					
RCR																							
0	90	90	90	90	88	88	88	88	84	84	84	80	80	80	77	77	77	76					
1	83	80	77	75	81	78	76	74	75	73	71	72	71	69	70	68	67	66					
2	77	71	67	63	75	70	66	62	67	64	61	65	62	60	63	60	58	57					
3	71	64	59	54	69	63	58	54	61	56	53	59	55	52	57	54	51	50					
4	66	57	52	47	64	57	51	47	55	50	46	53	49	45	51	48	45	43					
5	60	51	45	41	59	51	45	40	49	44	40	48	43	40	46	42	39	38					
6	56	46	40	36	54	46	40	35	44	39	35	43	38	35	42	38	35	33					
7	52	42	36	31	50	41	35	31	40	35	31	39	34	31	38	34	30	29					
8	48	38	31	27	46	37	31	27	36	31	27	35	30	27	34	30	27	25					
9	44	34	28	24	43	33	28	24	33	27	23	32	27	23	31	27	23	22					
10	41	31	25	21	40	30	25	21	30	24	21	29	24	21	28	24	21	19					

Zonal Lumen Summary

Zone	Lumens	%Lamp	%Fixture
0-30	2039	24.3	32.1
0-40	3308	39.4	52.1
0-60	5397	64.2	85.1
0-90	6344	75.5	100.0
0-180	6344	75.5	100.0

Typical VCP Percentages

Room Size (Ft.)	Height Along		Height Across	
	8.5'	10.0'	8.5'	10.0'
20 x 20	62	67	60	65
30 x 30	55	59	53	57
30 x 60	46	49	42	46
60 x 30	57	61	56	60
60 x 60	46	49	44	47

Candela

Angle	Along II	45°	Across L
0	2584	2584	2584
5	2572	2579	2586
10	2541	2560	2576
15	2488	2520	2544
20	2407	2452	2485
25	2294	2352	2389
30	2148	2216	2254
35	1965	2039	2078
40	1747	1818	1871
45	1488	1556	1636
50	1206	1276	1367
55	950	1004	1059
60	730	710	755
65	543	466	543
70	396	308	421
75	396	308	421
80	222	196	260
85	121	114	141
90	0	0	0

ORDERING INFORMATION

SAMPLE NUMBER: GC2048-332A-UNV-EB81-U

Rating Blank = Standard NY =New York City Rated ATW-SW4 = Chicago Rated	Width 2048 =20" Width x 48" Length	Voltage ⁽³⁾ 120V =120 Volt 277V =277 Volt 347V =347 Volt UNV =Universal Voltage 120-277 ⁽⁴⁾	Ballast Type EB8 _=T8 Electronic Start. Total Harmonic Distortion < 10% EB8 _/PLUS=T8 Electronic Start. Total Harmonic Distortion < 10%. High Ballast Factor > 1.15. ER8 _=T8 Electronic Program Rapid Start. Total Harmonic Distortion < 10% High Performance T8 Ballasts HB8 _=T8 Electronic Instant Start. Total Harmonic Distortion < 10%. Standard Ballast Factor .86 – .88 HB8 _L=T8 Electronic Instant Start. Total Harmonic Distortion < 10%. Low Ballast Factor .77 – .82 HB8 _N=T8 Electronic Instant Start. Total Harmonic Distortion < 10%. Normal Ballast Factor 1.0 HB8 _H=T8 Electronic Instant Start. Total Harmonic Distortion < 10%. High Ballast Factor 1.15 – 1.20 HR8 _T8 Electronic Program Rapid Start. Total Harmonic Distortion < 10%. Standard Ballast Factor .86 – .88 HR8 _DIM=T8 Electronic Program Rapid Start. Total Harmonic Distortion < 10%. Step Dimming. Ballast Factor .88 HR8 _L=T8 Electronic Program Rapid Start. Total Harmonic Distortion < 10%. Low Ballast Factor .71 – .79 HR8 _H=T8 Electronic Program Rapid Start. Total Harmonic Distortion < 10%. High Ballast Factor 1.15 – 1.20 0-10V Dimming Ballasts ⁽⁸⁾ 5LTV8 _=T8 0-10V Program Rapid Start. Total Harmonic Distortion < 10%. Ballast Factor 0.87 ^{(9), (10)} Fifth Light DALI Ballasts ⁽⁷⁾ 5LT8 _=T8 DALI Program Rapid Start. Total Harmonic Distortion < 10%. Ballast Factor 1.0	Packaging U =Unit Pack PAL =Job Pack, out of carton PALC =Job Pack, in carton
Trim Type G =Grid/Lay-in – Standard ⁽¹⁾ G =Concealed T G =Slot Grid F =Aluminum Flange Trim ⁽⁶⁾ MZ =Modular Trim EMZ =Modular Trim (Extended Swing Arm)	Number of Lamps ⁽⁶⁾ 3 =3 Lamps	Options GL =Single Element Fuse GM =Double Element Fuse Flex =Flex Installed (Reference Flex ordering information) EL =Emergency Installed ⁽¹¹⁾	Options PAF =Painted After Fabrication 20GA/REP =20 Gauge Riveted Endplates. For use in New York City. RLS =Rotor-Lock Socket (T8 Lamps Only) (See options & accessories)	ACCESSORIES EQ-CLIP-U =T-BAR Safety Earthquake Clips ⁽¹⁾
Series C =Specification Deep Troffer	Wattage (Length) 28T8 =28W T8 (48") ⁽²⁾ 32 =32W T8 (48")	Shielding A =#12 Pattern Acrylic A125 =#12 Pattern Acrylic (.125" Thickness) A19/156 =#19 Pattern Acrylic (.156" Thickness) DA =Dropped Dish Matte White Acrylic IMA48 =Injection Molded Acrylic (.150" Thickness)	Option – Aluminum Flange Trim ⁽⁶⁾ Blank =SW (Single White) Type Color 'S' Single 'N' Natural 'R' In Row 'W' White 'E' End of Row	
Doorframes Standard =Flat White Steel Door (Leave Blank) FA =Flush White Extruded Aluminum c/w Spring Latch RA =Regressed White Extruded Aluminum (3/8") FAN =Flush Natural Anodized Extruded Aluminum RAN =Regressed Natural Anodized Extruded Aluminum (3/8") FAB =Flush Black Extruded Aluminum RAB =Regressed Black Extruded Aluminum (3/8")	Option – Aluminum Flange Trim ⁽⁶⁾ Blank =SW (Single White) Type Color 'S' Single 'N' Natural 'R' In Row 'W' White 'E' End of Row			

NOTES:

- ⁽¹⁾ An EQ Grid Clip is recommended for all 9/16" ceiling systems. Four required per fixture.
- ⁽²⁾ When utilizing 28W T8 lamps, HPT8 Ballast must be specified. 32W lamps are 90 CRI only.
- ⁽³⁾ Products also available in non-US voltages and frequencies for international markets.
- ⁽⁴⁾ Not available when specifying emergencies, voltage must be specific.
- ⁽⁵⁾ Specify row configuration, type in catalog number when ordering complete fixture.
- ⁽⁶⁾ Standard off-center ballast compartment on 3-lamp fixtures.
- ⁽⁷⁾ For a complete listing of Fifthlight Technology products and other solutions from Cooper Controls, visit www.coopercontrol.com.
- ⁽⁸⁾ 0-10V ballast do not include DALI feature. Please select DALI ballast for use with Fifth Light system.
- ⁽⁹⁾ Standard 0-10V ballast not available for 28W T8 lamps.
- ⁽¹⁰⁾ Voltage must be specified for Standard 0-10V 32W 3 and 4-lamp ballast. 4-lamp ballast versions must be 277V.
- ⁽¹¹⁾ Please specify required voltage, 120V or 277V.
- Specifications & dimensions subject to change without notice. Consult your Cooper Lighting Solutions Representative for availability and ordering information.

SHIPPING DATA

Catalog No.	Wt.
GC2048-328T8A	31 lbs.
GC2048-332A	31 lbs.