

Project		Catalog #		Type	
Prepared by		Notes		Date	



## LUMASPORT 8 - Integral

CCT Tunable or Fixed-Color White LED Sports & Entertainment Luminaire

### Typical Applications

Ball Fields • Pro Arenas • University & Collegiate Arenas  
University & Collegiate Stadiums • Multi-Event & Convention Centers  
Gymnasiums & Field Houses

### Product Certification



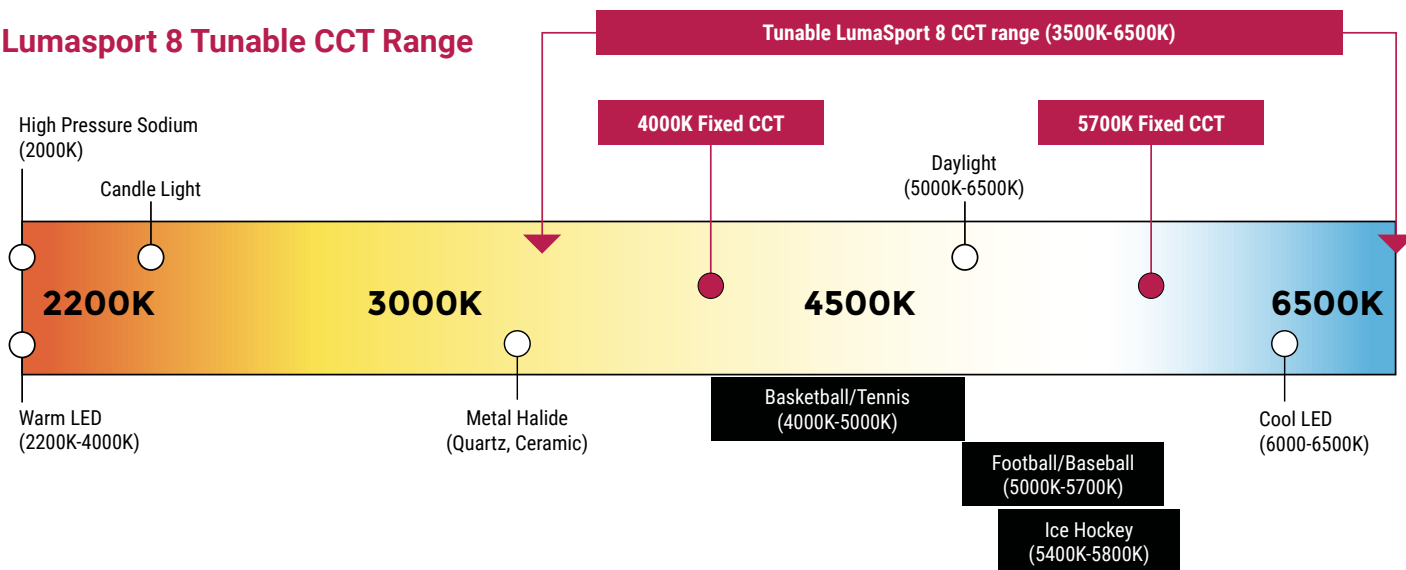
### Interactive Menu

- Ordering Information [page 3](#)
- Dimensional and Mounting Details [page 4](#)
- Performance Data [page 8](#)
- Electrical Performance Data [page 8](#)
- Ordering Information for Accessories [page 9](#)
- Accessory Dimensions and Part Details [page 10](#)
- Example System Topology [page 13](#)

### Top Product Features

- Streamlined design ideal for one-to-one integral ballast retrofit systems speeding up and simplifying installation.
- Pre-aiming capability reduces installation time and ensures aiming precision.
- Industry leading light source reliability with Chip-on-Board LEDs with an efficacy up to 185 lumens per Watt.
- Award winning glare and cutoff control via patented Hybrid Reflector and TIR Optical System.
- Available in fixed CCT options of 4000K to 5700K and a tunable CCT range option of 3500K to 6500K to meet varying lighting demands.
- Top Mounted Yoke, Bottom Mounted Yoke, Pendant Mount and Slip Fitter Mounting options for flexibility in applications.
- Heatsinking for thermal management insures system reliability.
- Wired DMX and Wireless AirMesh control protocols allow for system alerts, scheduling, and on-demand control of static and dynamic lighting scenes.
- Options to meet Trade Agreements Act requirements.

### Lumasport 8 Tunable CCT Range



**Mounting Configuration Examples**



**2QTY LUMASPORT 8 - INTEGRAL LUMINAIRE**  
SHOWN USING THE TOP MOUNT YOKE (TY)



**2QTY LUMASPORT 8 - INTEGRAL LUMINAIRE**  
SHOWN USING THE BOTTOM MOUNT YOKE (BY)  
ON A EPHEBUS CATWALK BRACKET ( EPH-LS-CAT-N-2-U-B)



**1QTY LUMASPORT 8 - INTEGRAL LUMINAIRE**  
SHOWN USING THE PENDANT MOUNT (RP)



**1QTY LUMASPORT 8 - INTEGRAL LUMINAIRE**  
SHOWN USING SLIP FITTER MOUNTING BRACKET AND SLIP FITTER ACCESSORY (SLPFTR)  
SLIP FITTER (SLPFTR) MOUNTING ACCESSORY SOLD SEPARATELY

Order Information

NOTE: A complete fixture order requires a selection entry for **Brand, Family, Model, Power Configuration, Color, CCT, CRI, Optic, Light Head Cable (DC), Voltage, Control, Mount Configuration, Power Cable (AC), Options, Packaging, & Special Option.**

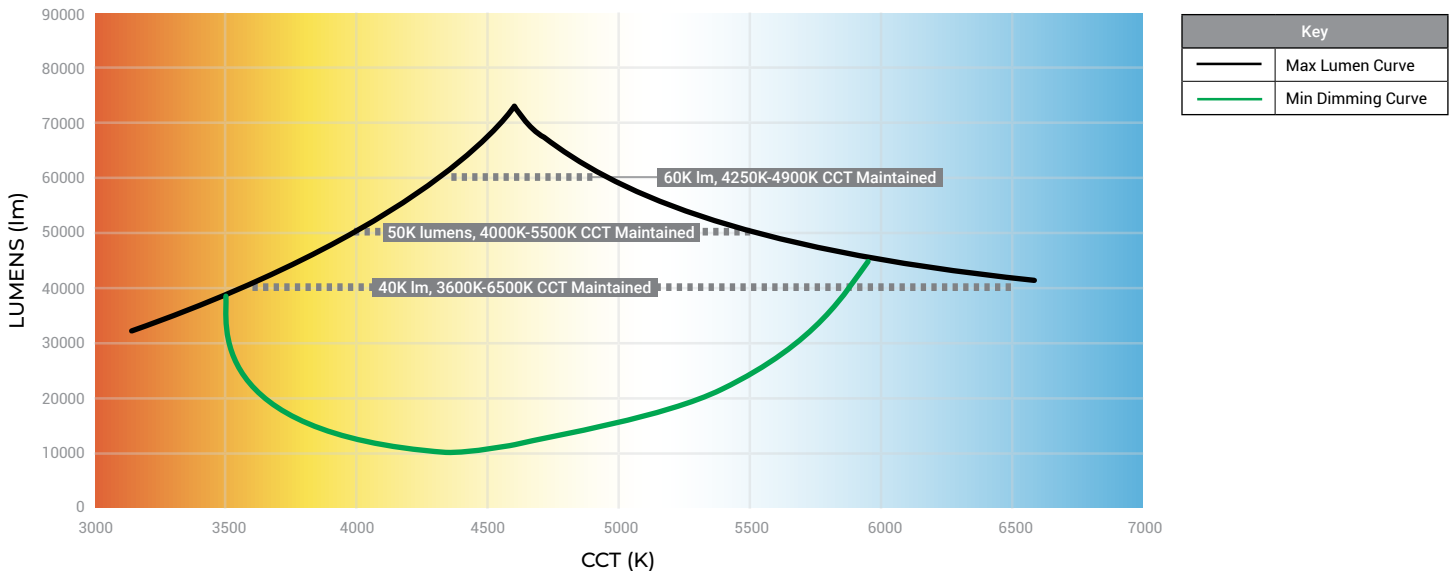
SAMPLE ORDER NUMBER: EPH-LS-08-0680N-BLK-57-80-2S-C00-LV-AM-BY-A04-HEG-BP-ST

Brand	Family	Model	Power Configuration	Color	CCT	CRI	Optic	Light Head Interface (DC)
Brand <sup>1</sup>	Family	Model	Power Configuration	Color <sup>2</sup>	CCT <sup>4</sup>	CRI <sup>5</sup>	Optic <sup>6,7</sup>	Light Head Interface (DC) <sup>8</sup>
EPH = Ephesus, Standard TAA=Trade Agreements Act <sup>1</sup>	LS = Lumasport	08 = 8 Optics	0320N = 320W Integral Power 0530N = 530W Integral Power 0680N = 680W Integral Power <sup>2</sup>	BLK = Black WHT = White GRY = Grey	40 = 4000K 57 = 5700K PRO <sup>3</sup> = CCT Color Tuning	70 = 70 CRI 80 = 80 CRI 85 = 85 CRI 90 = 90 CRI	1S <sup>6</sup> = NEMA 3   17.5   33.3 2S = NEMA 3   21.9   40.2 3S = NEMA 3   25.4   45.7 4S = NEMA 4   36.0   64.4 5S = NEMA 5   46.6   82.6 7F = NEMA 7   72.5   131.0	C00 = Direct Connection
Notes: (1) Only product configurations with this designated prefix are built to be compliant with the Trade Agreements Act of 1979 (TAA). Please refer to DOMESTIC PREFERENCES website for more information. Components shipped separately may be separately analyzed under domestic preference requirements.			Notes: (2) 680W configuration is limited to Outdoor Usage only.	Notes: (3) Not coastal rated. Contact Ephesus for coastal fixture options.	Notes: (4) PRO only available with 530N	Notes: (5) 85 only available with PRO CCT	Notes: (6) Optic = NEMA TYPE; BEAM ANGLE; FIELD ANGLE. (7) Aiming angles for 680N power configuration and 1S optics between 30-90 Degrees.	Notes: (8) The driver assembly is integrated directly into the luminaire. Cable length can have a deviated tolerance of +/- 6inches.

Voltage	Control	Mount Configuration	Power Cable (AC)	Options	Packaging	Special Option
Voltage	Control <sup>9</sup>	Mounting Configuration <sup>10,11,12</sup>	Power Cable (AC) <sup>13</sup>	Options <sup>14,15,16</sup>	Packaging	Special Option
LV = Low Voltage HV = High Voltage	NC = No Control AM = Wireless AirMesh LB = Wired DMX	TY = Top Mounted Yoke BY = Bottom Mount Yoke, Catwalk Standard RP <sup>10</sup> = Pendant Mount SM <sup>11</sup> = Slip Fitter mount	A00 = No Cable A04 = 2ft Cable, Standard A10 = 8ft Cable A20 = 18ft Cable BH3 = 3 Pin Connector on AC, 3ft Standard Cable	HEG = No Visor   High Efficiency Glass Lens VHE <sup>13</sup> = Visor   High Efficiency Glass Lens CV1 <sup>14</sup> = 1 Louver Cutoff Visor CV2 <sup>14</sup> = 2 Louver Cutoff Visor CV5 <sup>14</sup> = 5 Louver Cutoff Visor	BP = Bulk Pack	ST = Standard CC = Coastal Construction
	Notes: (9) PRO CCT not offered with NC = No Control	Notes: (10) Contact Ephesus for Slipfitter Mounting options. (11) RP = Pendant Mount not available in 0680N = 680N Integral Power configuration. (12) SM = Slip Fitter mount tilt range of 20-90 Slip Fitter mounting bracket is shipped separately from the light head. Slip Fitter (SLPFTR) Mounting Accessory Sold Separately.	Notes: (13) AC Cable connecting the luminaire to the electrical power source. Cable length can have a deviated tolerance of +/- 6inches.	Notes: (14) VHE visor color only available in silver. (15) CV1, CV2, CV5 visor color only available in black. (16) CV1, CV2, CV5 will not be available on the PRO CCT		

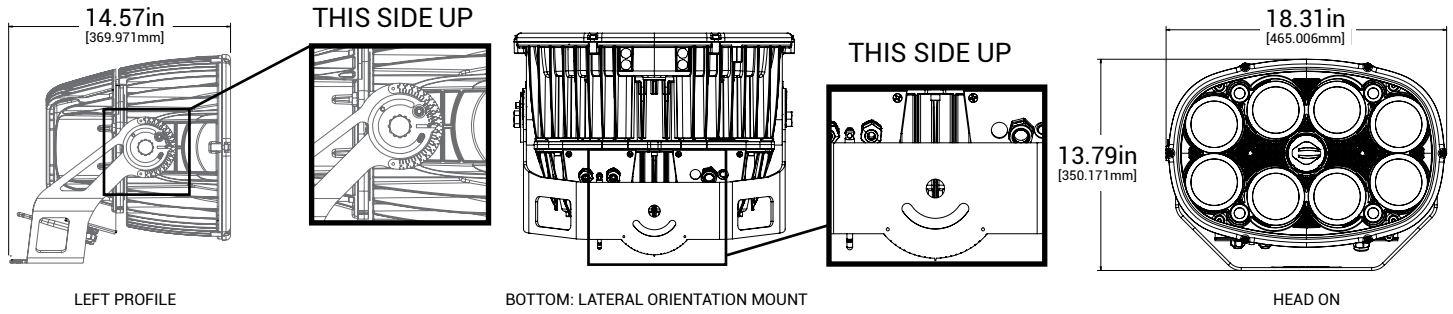
DesignLights Consortium® Qualified. Refer to [www.designlights.org](http://www.designlights.org) Qualified Products List under Family Models for details

CCT Pro Tuning Operating Range

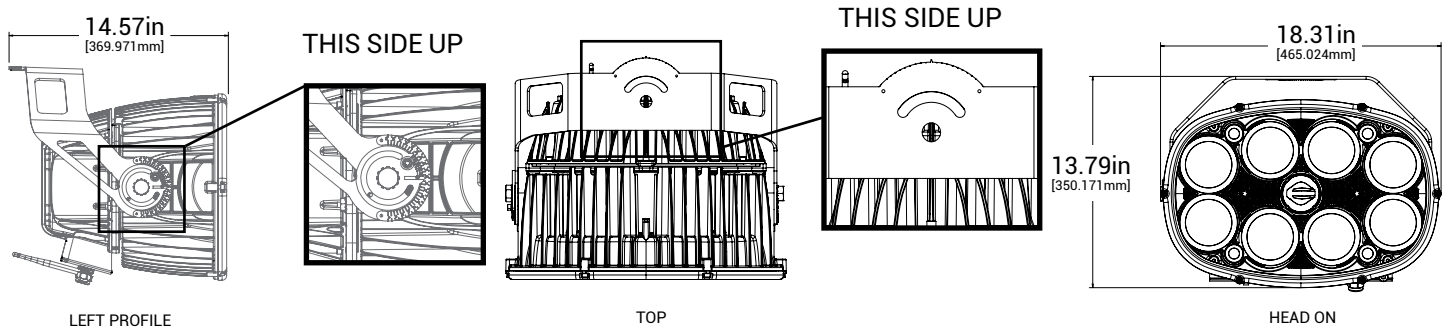


Dimensional and Mounting Details

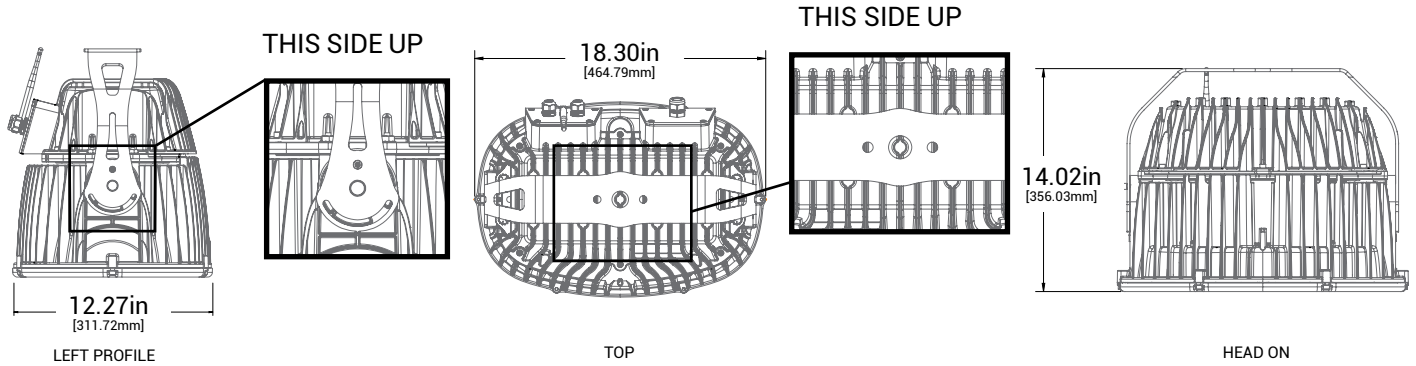
MOUNTING CONFIGURATION: TOP MOUNT YOKE



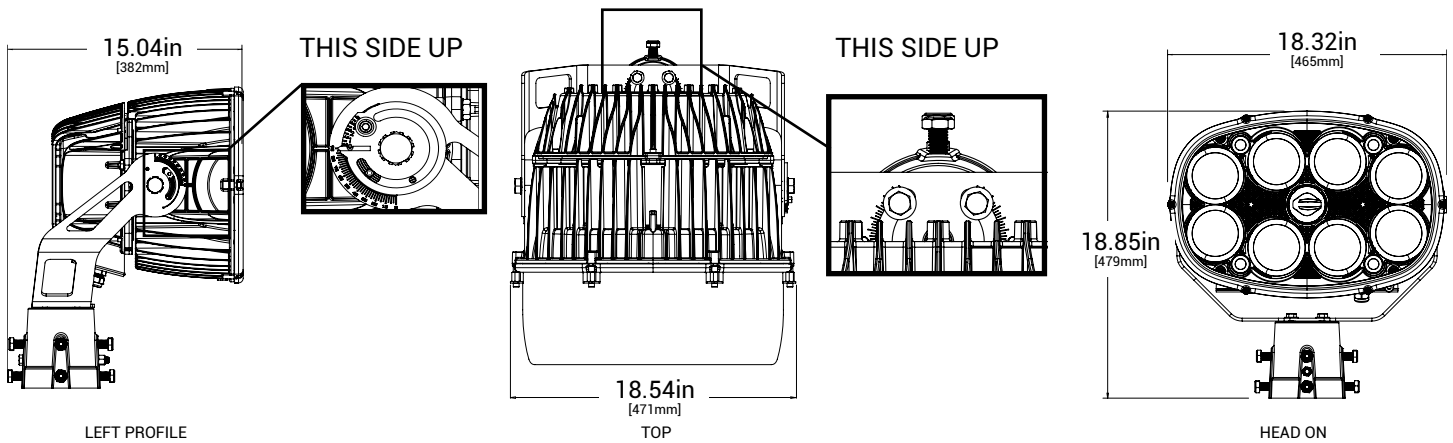
MOUNTING CONFIGURATION: BOTTOM MOUNT YOKE



MOUNTING CONFIGURATION: PENDANT MOUNT



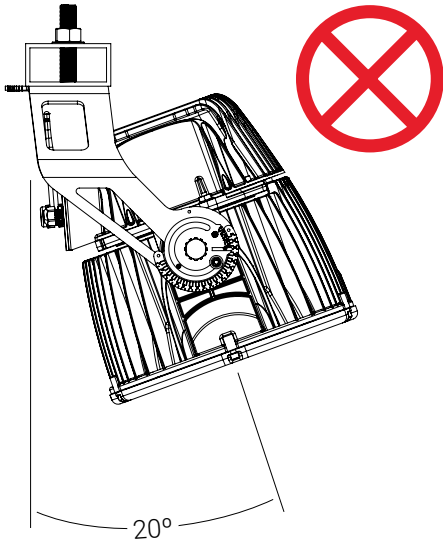
MOUNTING CONFIGURATION: SLIP FITTER MOUNT



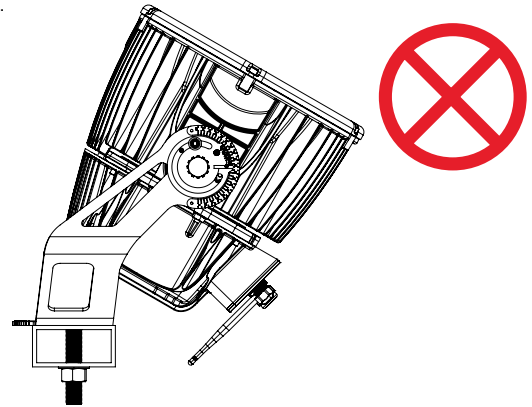
	320W		530W		680W	
Usage	Indoor	0-90 Degrees	Indoor	0-90 Degrees	N/A	N/A
	Outdoor	20-90 Degrees	Outdoor	20-90 Degrees	Outdoor	20-90 Degrees; 30-90 Degrees for 1S optic
Mounting options (1.5G Rated)	Top mount yoke, Bottom Mount Yoke, Pendant Mount, Slip Fitter Mount		Top mount yoke, Bottom Mount Yoke, Pendant Mount, Slip Fitter Mount		Top mount yoke, Bottom Mount Yoke, Slip Fitter Mount	

**INCORRECT ORIENTATIONS**

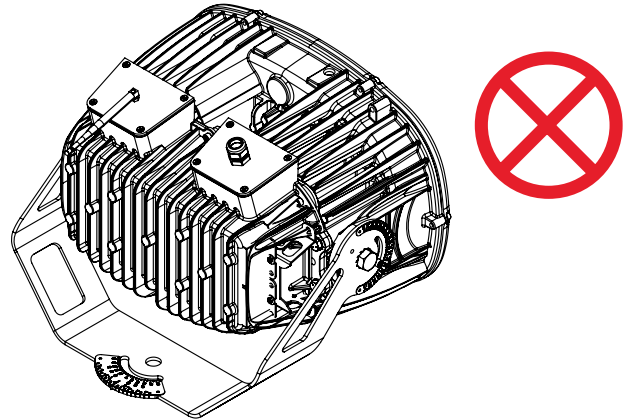
680W configurations can not be aimed downward below 20°  
 680W 1S configurations can not be aimed downward below 30°  
 All configurations can not be aimed downward below 20° outdoors or in wet locations



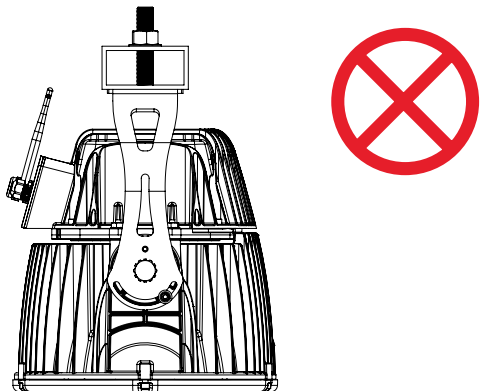
Uplight not allowed. Please contact Ephesus Sports Lighting for uplighting solutions.



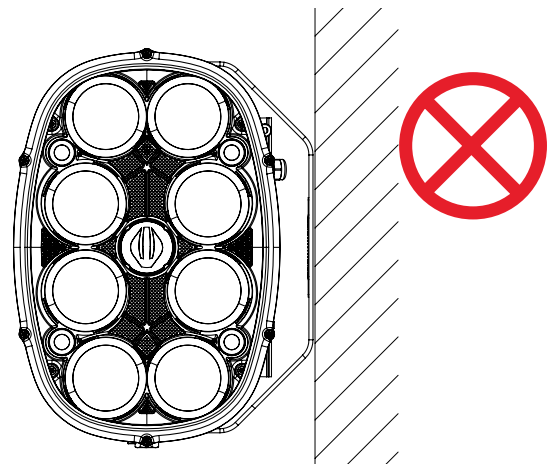
All configurations can not be inverted with junction box on top



680W configurations can not be used with the Pendant Mount

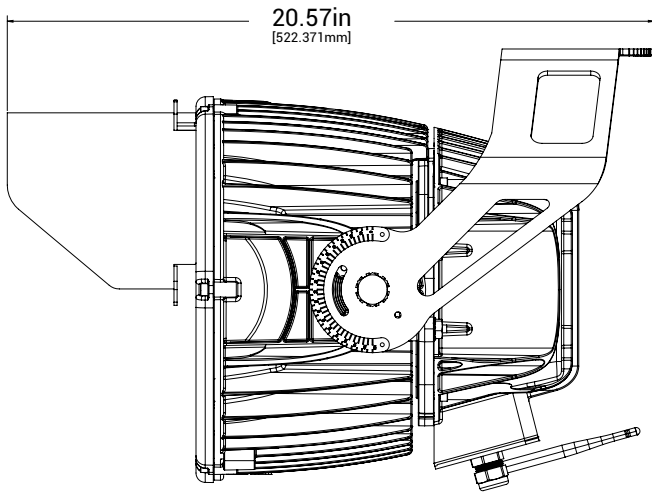


All configurations can not be side mounted

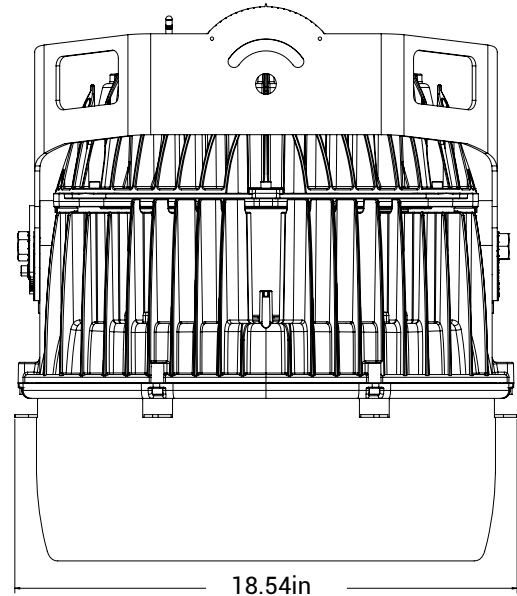


VHE Visor Option Dimensional Details

MOUNTING CONFIGURATION: BOTTOM MOUNT YOKE



LEFT PROFILE: VISOR

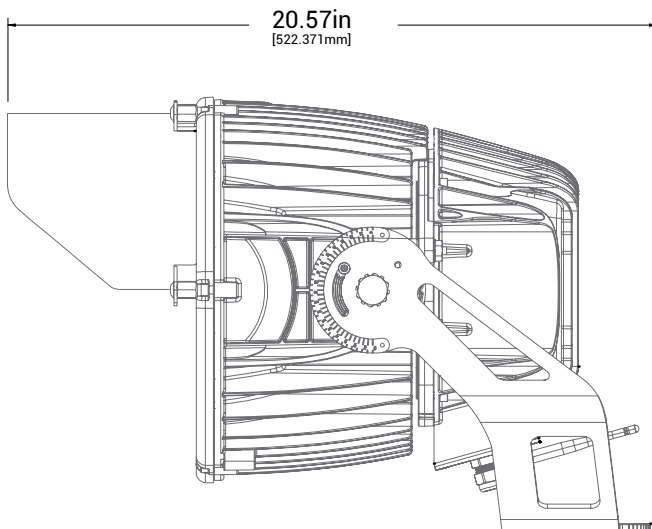


TOP: VISOR

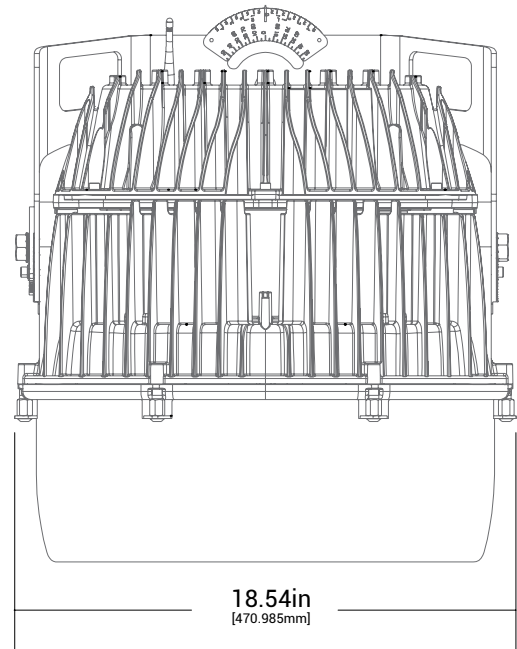
NOTES:

The addition of a visor adds 4lbs of material to the luminaire weight.

MOUNTING CONFIGURATION: TOP MOUNT YOKE



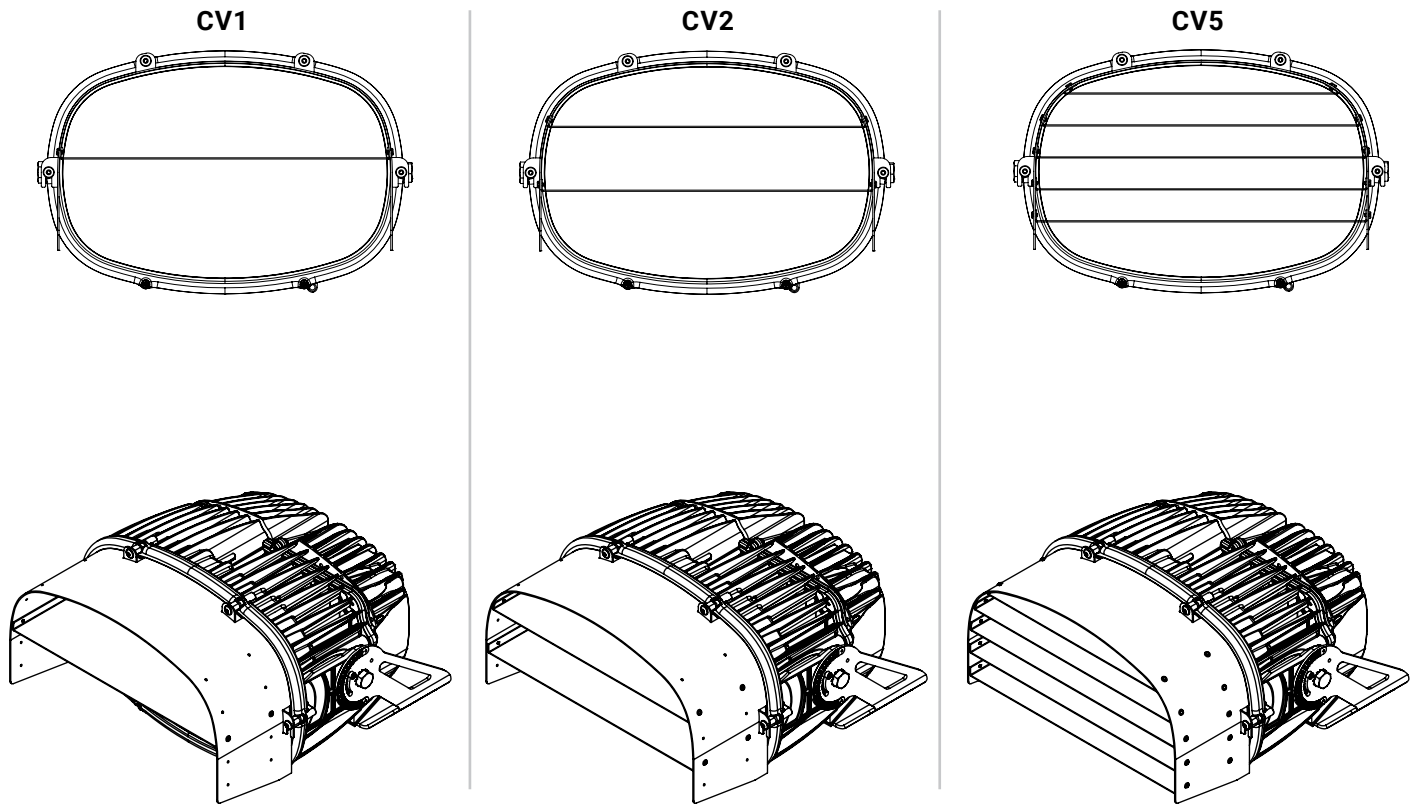
LEFT PROFILE: VISOR



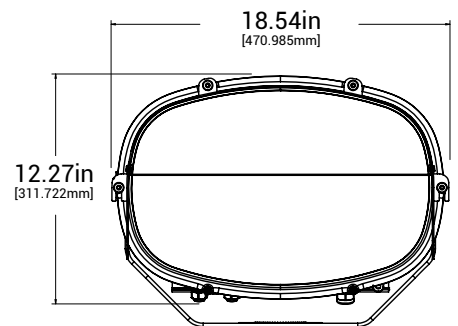
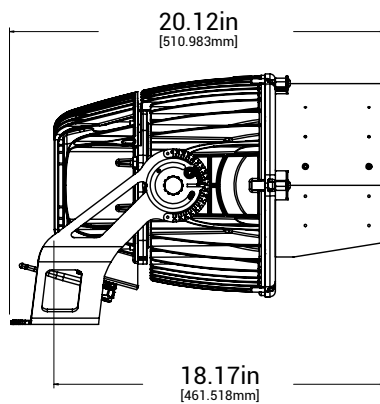
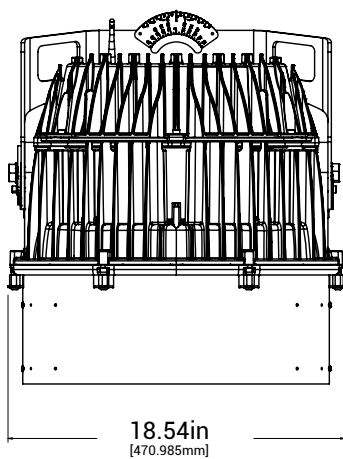
TOP: VISOR

**CV1, CV2, CV5 Cutoff Visor Options\***

\*CV1, CV2, CV5 will not be available on the PRO CCT



**CV1, CV2, CV5 Cutoff Visor Option Dimensional Details**



## Performance Data<sup>1</sup>

	LUMASPORT 8 (320W)	LUMASPORT 8 (530W)	LUMASPORT 8 (680W)
<b>Lumen Output Range</b>	51,000-62,000 lm	76,000-91,000 lm	86,000-109,000 lm
<b>Lumen Output (PRO Version at 85CRI)<sup>10</sup></b>	N/A	56,596	N/A
<b>Nominal Power<sup>2</sup></b>	355W	578W	724W
<b>Input Voltage (Low Voltage)</b>	120-277VAC	120-277VAC	120-277VAC
<b>Input Voltage (High Voltage)</b>	347-480VAC	347-480VAC	347-480VAC
<b>Efficacy Range</b>	153-185 lm/w	134-165 lm//W	121-159 lm/W
<b>CRI<sup>3</sup></b>	70, 80, 90	70, 80, 85, 90 <sup>11</sup>	70, 80, 90
<b>TLCI<sup>4</sup></b>	up to 75	up to 75	up to 75
<b>CCT Range</b>	4000K, 5700K	4000K, 5700K	4000K, 5700K
<b>CCT Tunable Range (PRO Version at 85CRI)</b>	N/A	3500K - 6500K	N/A
<b>Distribution (NEMA)</b>	3-7	3-7	3-7
<b>Dimming Range</b>	DIM TO OFF, 10%-100%	DIM TO OFF, 10%-100%	DIM TO OFF, 10%-100%
<b>Operating Temperature Range</b>	-40°C to +40°C	-40°C to +40°C	-40°C to +40°C
<b>Usage</b>	INDOOR, OUTDOOR	INDOOR, OUTDOOR	OUTDOOR
<b>Mounting Options (1.5G RATED)</b>	TOP MOUNT YOKE, BOTTOM MOUNT YOKE, PENDANT MOUNT, SLIP FITTER MOUNT	TOP MOUNT YOKE, BOTTOM MOUNT YOKE, PENDANT MOUNT, SLIP FITTER MOUNT	TOP MOUNT YOKE, BOTTOM MOUNT YOKE, SLIP FITTER MOUNT
<b>Electrical Certifications</b>	FCC, UL8750, UL1598, DLC Standard (NANQSV)	FCC, UL8750, UL1598, DLC Standard (NANQSV)	FCC, UL8750, UL1598, DLC Standard (NANQSV)
<b>Environmental Certifications</b>	IP66	IP66	IP66
<b>Vibration</b>	ANSI C136.31-2010 1.5G	ANSI C136.31-2010 1.5G	ANSI C136.31-2010 1.5G
<b>Surge</b>	10kV	10kV	10kV
<b>Effective Projected Area (EPA)</b>	2.19 (sq. ft.)	2.19 (sq. ft.)	2.19 (sq. ft.) <sup>0</sup>
<b>Effective Projected Area (EPA) with Visor (VHE, CV1, CV2, CV5)<sup>8</sup></b>	2.85 (sq. ft.)	2.85 (sq. ft.)	2.85 (sq. ft.)
<b>Approximate Weight<sup>9</sup></b>	57 LBS	57 LBS	57 LBS
<b>Approximate Weight with Visor (VHE, CV1, CV2, CV5)<sup>9</sup></b>	61 LBS	61 LBS	61 LBS

### NOTES:

- (1) Specifications are subject to change without notice.
- (2) Values are +/- 4% when fixture is operated at 25°C ambient
- (3) Values are +/- 2%
- (4) Values are +/- 3 points.
- (5) When driver box is mounted in upright position.
- (6) Luminaire meets NEMA4X Certification
- (7) LumaSport 8 with Visors (VHE, CV1, CV2, CV5) qualifies for ANSI C136, 31-2010 1.5G
- (8) EPA may vary depending on the aiming angle of the fixture.
- (9) Weight may vary depending on mounting bracket, VHE Visor option, and luminaire configuration.
- (10) Based of 3S Optic, 85 CRI, 5000 CCT
- (11) 85 CRI is only available in PRO model

## Electrical Performance Data

Product	Voltage level	Input voltage range (Vac)	Nominal input power(W)	Input Current(A)	Power factor (@ max load)	THDi(@ max load)%	Inrush period (ms)	Peak Inrush (A)
EPH-LS-08-0320N-XXX-LV	(-LV-) Low voltage	120	357	2.97	0.99	4.79	0.28	133
		277	349	1.28	0.98	7.66	0.27	311
EPH-LS-08-0320N-XXX-HV	(-HV-) High voltage	347	359	1.04	0.99	7.02	0.41	92
		480	358	0.76	0.98	9.20	0.41	129
EPH-LS-08-0530N-XXX-LV	(-LV-) Low voltage	120	591	6.81	0.99	5.61	0.40	188
		277	573	2.84	0.97	11.60	0.38	440
EPH-LS-08-0530N-XXX-HV	(-HV-) High voltage	347	576	2.40	0.99	8.16	0.58	130
		480	573	1.69	0.98	10.17	0.58	182
EPH-LS-08-0530N-XXX-PRO-85-LV	(-LV-) Low voltage	120	598	4.99	0.99	4.70	0.40	188
		277	586	2.12	0.97	7.70	0.38	440
EPH-LS-08-0530N-XXX-PRO-85-HV	(-HV-) High voltage	347	594	1.71	0.99	8.10	0.58	130
		480	588	1.23	0.97	10.50	0.58	182
EPH-LS-08-0680N-XXX-LV	(-LV-) Low voltage	120	744	8.50	0.99	5.69	0.40	188
		277	716	3.50	0.98	11.32	0.38	440
EPH-LS-08-0680N-XXX-HV	(-HV-) High voltage	347	722	2.99	0.99	6.86	0.58	130
		480	716	2.11	0.98	9.16	0.58	182

NOTE: All values measured at 25°C ambient conditions

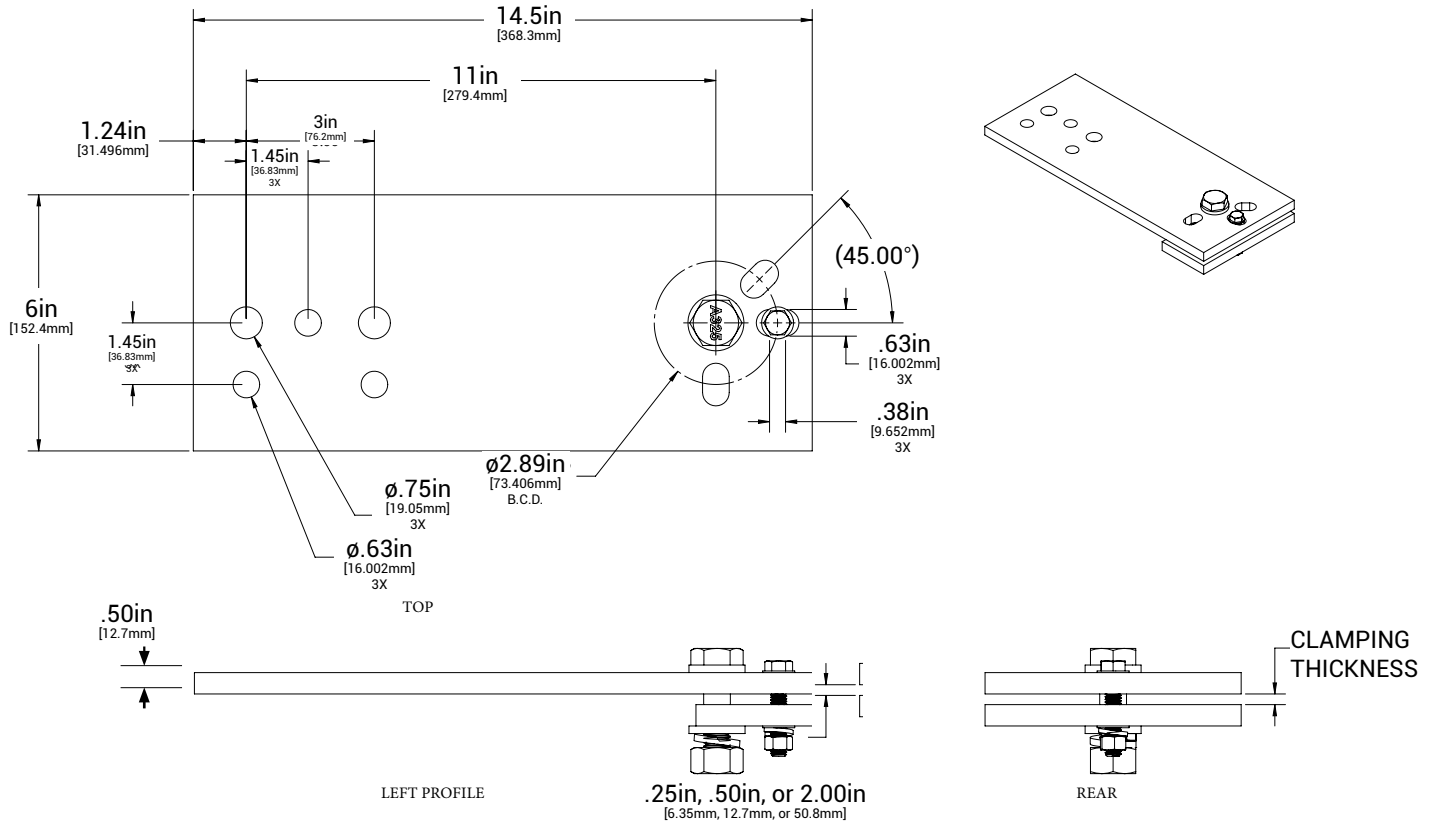
## Ordering Information for Accessories

NOTE: A complete accessory order requires a selection entry for **Brand, Accessory, Option**.

SAMPLE ORDER NUMBER: **EPH-HRDM34-025**

Brand	Accessory	Option	Intended Use
EPH = Ephesus	<b>EXTPLT</b> = Extension Plate <sup>1</sup>	<b>025</b> = .25in <b>050</b> = .5in <b>200</b> = 2.0in	Extension Plate Kit to mount to structures .25in, .5in, or 2.00in thick. Designed to be used with the LUMASPORT 8 - Local, LUMASPORT 8 - Integral, LUMADAPT 8, LUMASPORT 8 PRISM - Local luminaires only.
	<b>DVGBRD</b> = Diving Board <sup>2</sup>		Diving Board to mount to 2in x 4in steel cross arms. Designed to be used with the LUMASPORT 16 - Local, LUMASPORT 8 - Local, LUMASPORT 8 - Integral, LUMADAPT 8, LUMASPORT 8 PRISM - Local luminaires only.
	<b>HRDM58</b> = Mounting Hardware 5/8in diameter	<b>050</b> = .375in - .50in Range of Clamping Thickness <sup>3</sup> <b>200</b> = 2in Clamping Thickness <sup>3</sup>	<b>HRDM58-050</b> : .375-.50in clamping thickness, Use for Extension Plate (EXTPLT) or other flat surfaces drilled for 5/8in hardware <b>HRDM58-200</b> : 2.00in clamping thickness, use for 2in x 4in Cross arms that are drilled for 5/8in hardware
	<b>HRDM34</b> = Mounting Hardware 3/4in diameter	<b>025</b> = .25in <sup>4</sup> <b>075</b> = .75in <sup>4</sup> <b>200</b> = 2in <sup>4</sup>	<b>HRDM34-025</b> : .25-.50in clamping thickness, use for diving board (DVGBRD) or other flat surfaces drilled for 3/4in hardware <b>HRDM34-075</b> : .50-.75in clamping thickness, flat surfaces drilled for 3/4in hardware <b>HRDM34-200</b> : 2.00in clamping thickness, use for 2in x 4in Cross arms that are drilled for 3/4in hardware
	Notes: (1) Additional mounting fastener hardware kit needed to attach a fixture to the <b>EXTPLT</b> = Extension Plate (2) Additional mounting fastener hardware kit needed to attach a fixture to the <b>DVGBRD</b> = Diving Board	Notes: (3) Option only available for use with <b>HRDM58</b> (4) Option only available for use with <b>HRDM34</b>	

**Extension Plate (EXTPLT) Dimension and Part Details:**



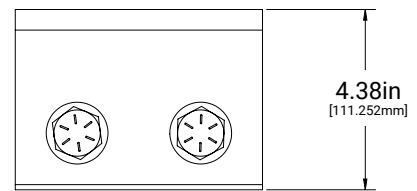
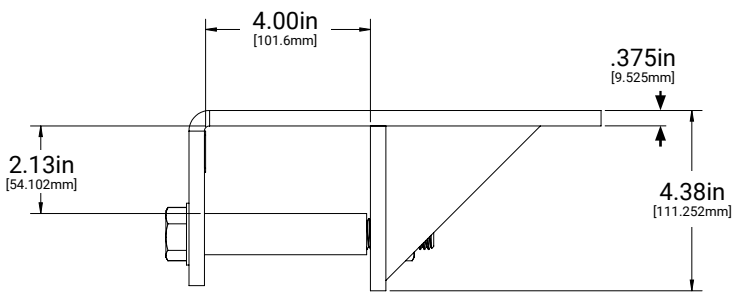
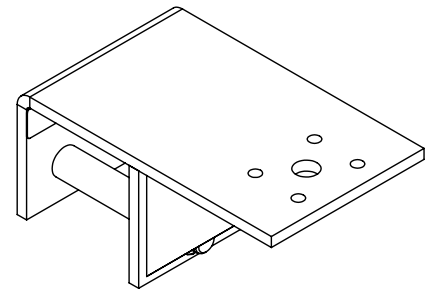
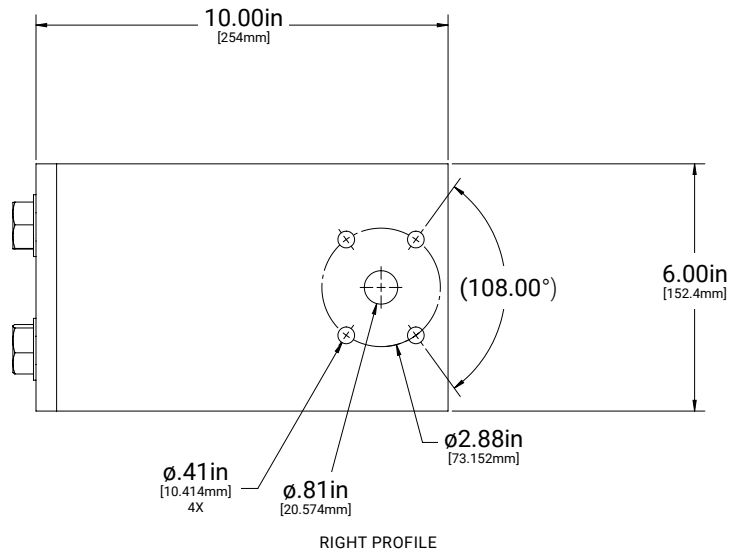
**Extension Plate Data**

MODEL #	WEIGHT (LBS)
EXTPLT	14.63
EXTPLT + HRDM58-050	15.28

**Extension Plate Kit Parts**

DESCRIPTION	QUANTITY
Extension Plate	1
Washer Plate	1
5/8in Hex Bolt	1
5/8in Washer	2
5/8in-11 Hex Nut	1
5/8in Split Washer	1
3/8in Washer	2
3/8in Hex Bolt	1
3/8in Split Washer	1
3/8in-16 Hex Nut	1

Diving Board (DVGBRD) Dimension and Part Details:



Diving Board Data

MODEL #	WEIGHT (LBS)
DVGBRD	15.1
DVGBRD + HRDM34-025	16.1

Diving Board Parts

DESCRIPTION	QUANTITY
Welded Bracket	1
Bolt Sleeve	2
3/4in-10 X 6in Structural Hex Bolt, Hot Dip Galvanized	2
3/4in Steel Flat Washer, Hot Dip Galvanized	2
3/4in Ext Tooth Washer, Steel, Magni-565 Grey Polycoat	2
3/4in-10 Structural Steel Hex Nut, Hot Dip Galvanized	2
Stainless Shim	1

**HRDM58 Dimension and Part Details:**

**HRDM58-050:**

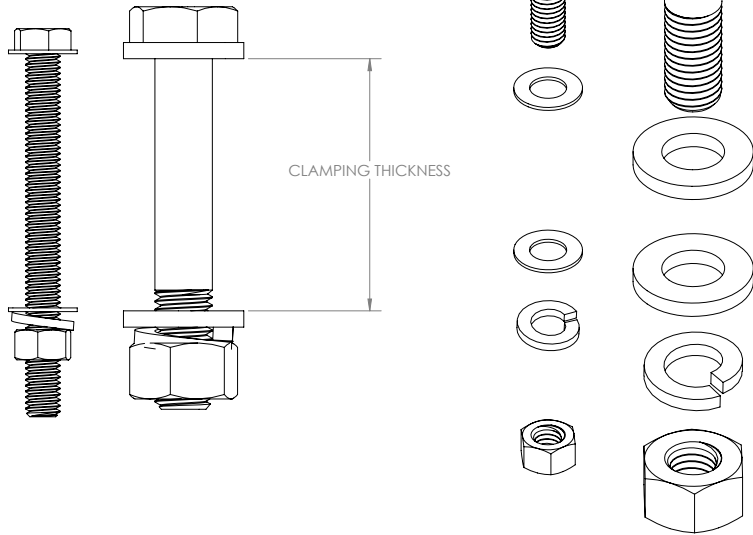
.375-.500in clamping thickness, Use for Extension Plate (EXTPLT) or other flat surfaces drilled for 5/8in hardware

**HRDM58-200:**

2.00in clamping thickness, use for 2in x 4in Cross arms that are drilled for 5/8in hardware

**HRDM58 Data**

MODEL #	WEIGHT (LBS)
HRDM58-050	.65
HRDM58-200	.84



**HRDM34 Dimension and Part Details:**

**HRDM34-025:**

.25-.50in clamping thickness, use for diving board (DVGBRD) or other flat surfaces drilled for 3/4in hardware

**HRDM34-075:**

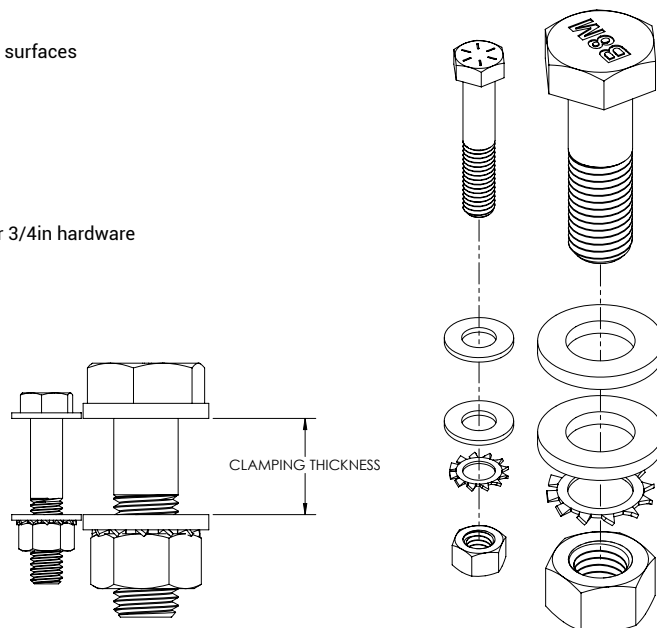
.50-.75in clamping thickness, flat surfaces drilled for 3/4in hardware

**HRDM34-200:**

2.00in clamping thickness, use for 2in x 4in Cross arms that are drilled for 3/4in hardware

**HRDM34 Data**

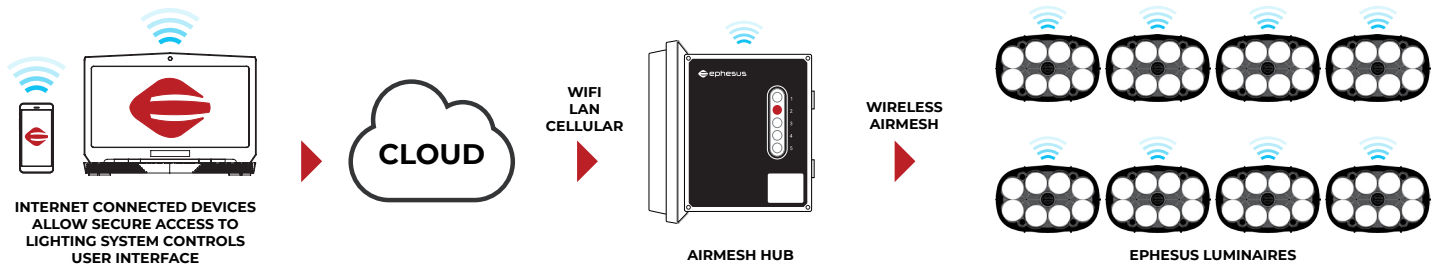
MODEL #	WEIGHT (LBS)
HRDM34-025	1
HRDM34-075	1.5
HRDM34-200	2



### Example System Topology (Wireless AirMesh Controls)

Example system topology showing the LUMASPORT 8 Integral System in a Wireless AirMesh Control Installation. Note: Laptop and mobile device not included. A cellular network connection requires a cellular carrier network plan.

#### REMOTE ACCESS



#### ON SITE ACCESS



### Example System Topology (Wired DMX Controls)

Example system topology showing the LUMASPORT 8 Integral System in a commonly used wired DMX Control Installation. Refer to the specifications and limitations of your wired DMX control device before installing this configuration.

