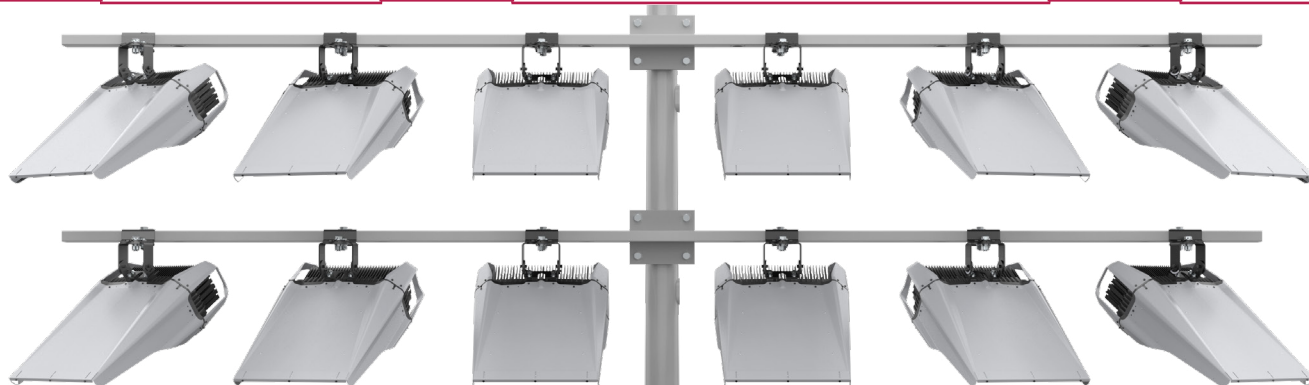


Project		Catalog #		Type	
Prepared by		Notes		Date	



Remote Power System: LUMASPORT 12

The Ephesus Remote Power System for the LumaSport 12 is engineered with precision optics and advanced glare control minimizing light spill and sky glow, making it the ideal choice for communities committed to environmental stewardship and DarkSky compliance.

- **New Applications** - A streamlined full turn-key system solution backed with industry leading reliability and performance
- **Retrofit Applications** - The minimally invasive retrofit kit enables the opportunity to keep existing remote power infrastructure (poles, cross arm, & wiring) providing the lowest total cost of ownership
- **Multi-Layered Optical System & Glare Control** - Delivers precise light control, minimizing glare & maximizing efficiency
- **DarkSky Friendly Design** - Minimizes spill light to preserve surrounding natural nightscapes while fully supporting DarkSky compliant outdoor sports lighting standards
- **Thermal Management Heatsinking** - Improves system reliability minimizing system downtime and maximizing system longevity
- **Remote Power Configuration** - Streamlines installation and maintenance by relocating sensitive components to bottom of pole



LIGHT HEAD WITH ECV



LIGHT HEAD WITHOUT ECV

System Certifications



Typical Applications

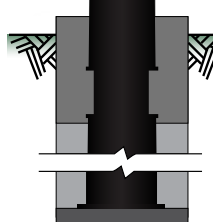
• Fields / Stadiums (Soccer, Football, Baseball, Cricket, Rugby, Tennis) • Racetracks (Motorsports, Horse Racing) • Airports, Ports, Railways & Area Lighting.

ASSEMBLE: EPH-LS12-1000R LIGHT HEAD

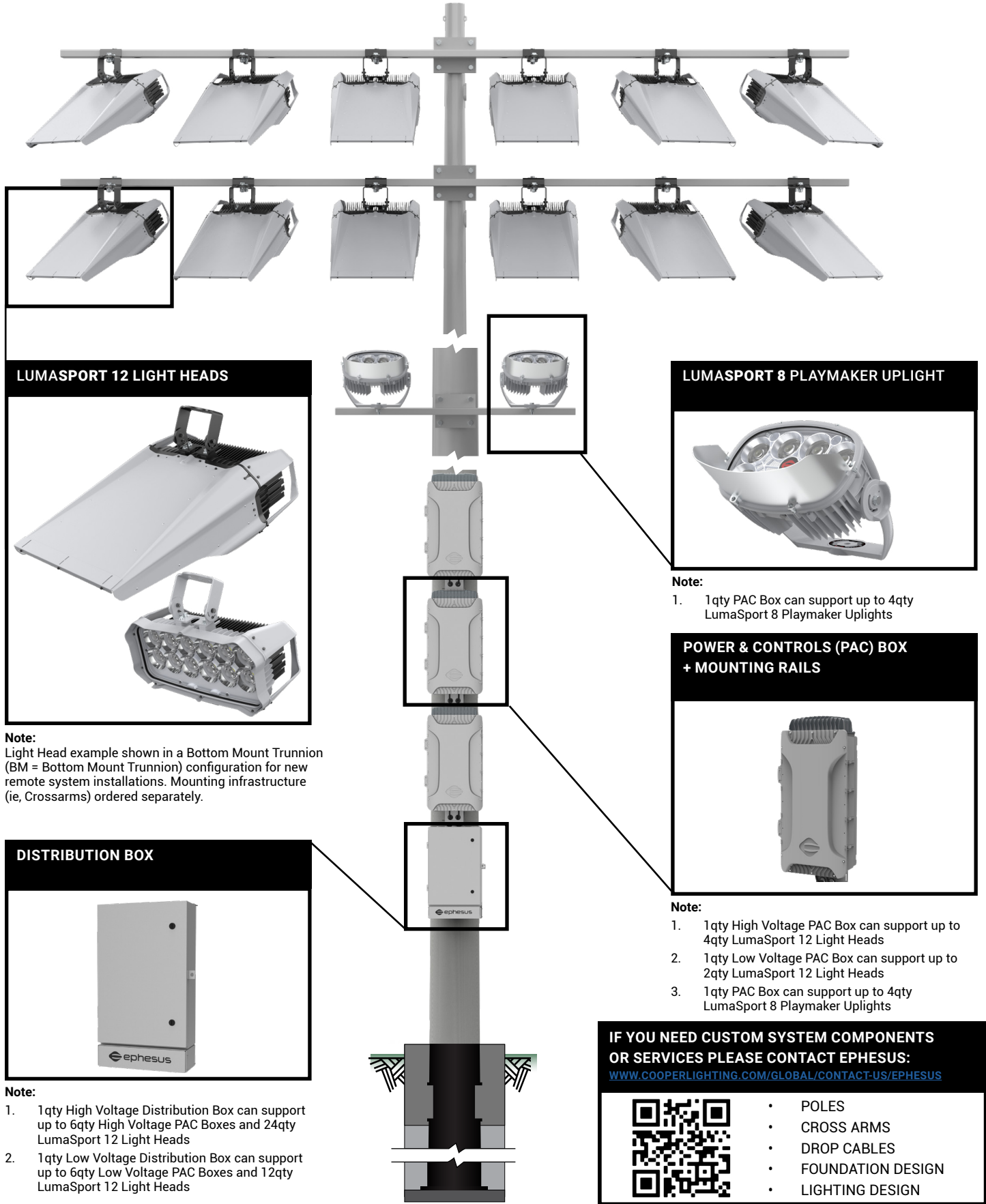
ONLY WITH PART: EPH-PAC-1000R POWER AND CONTROLS BOX

THIS PRODUCT MUST BE INSTALLED IN ACCORDANCE WITH THE APPLICABLE INSTALLATION CODE BY A PERSON FAMILIAR WITH THE CONSTRUCTION AND OPERATION OF THE PRODUCT AND THE HAZARDS INVOLVED

CE PRODUIT DOIT ÊTRE INSTALLÉ SELON LE CODE D'INSTALLATION PERTINENT, PAR UNE PERSONNE QUI CONNAÎT BIEN LE PRODUIT ET SON FONCTIONNEMENT AINSI QUE LES RISQUES INHÉRENTS



SYSTEM TOPOLOGY & BENEFIT FEATURES



LUMASPORT 12 LIGHT HEADS



Note:
Light Head example shown in a Bottom Mount Trunnion (BM = Bottom Mount Trunnion) configuration for new remote system installations. Mounting infrastructure (ie, Crossarms) ordered separately.

DISTRIBUTION BOX



- Note:**
1. 1qty High Voltage Distribution Box can support up to 6qty High Voltage PAC Boxes and 24qty LumaSport 12 Light Heads
 2. 1qty Low Voltage Distribution Box can support up to 6qty Low Voltage PAC Boxes and 12qty LumaSport 12 Light Heads

LUMASPORT 8 PLAYMAKER UPLIGHT



- Note:**
1. 1qty PAC Box can support up to 4qty LumaSport 8 Playmaker Uplights

POWER & CONTROLS (PAC) BOX + MOUNTING RAILS



- Note:**
1. 1qty High Voltage PAC Box can support up to 4qty LumaSport 12 Light Heads
 2. 1qty Low Voltage PAC Box can support up to 2qty LumaSport 12 Light Heads
 3. 1qty PAC Box can support up to 4qty LumaSport 8 Playmaker Uplights

IF YOU NEED CUSTOM SYSTEM COMPONENTS OR SERVICES PLEASE CONTACT EPHEBUS:

WWW.COOPERLIGHTING.COM/GLOBAL/CONTACT-US/EPHEBUS



- POLES
- CROSS ARMS
- DROP CABLES
- FOUNDATION DESIGN
- LIGHTING DESIGN

ORDER INFORMATION

NOTE: A complete LumaSport Remote System order requires a selection entry for:

- ① LUMASPORT 12 LIGHT HEADS - SAMPLE ORDER NUMBER: **EPH-LS-12-1000R-GRY-57-70-3S-BH3-TM-ECV-ST**
- ② POWER & CONTROLS BOX + MOUNTING RAILS - SAMPLE ORDER NUMBER: **EPH-PAC-1000R-GRY-208-AM-4-MR-ST**
- ③ DISTRIBUTION BOX - SAMPLE ORDER NUMBER: **EPH-DST-6PC-GRY-208-CP-ST**
- Ⓐ **ACCESSORIES: EXTREME CUT-OFF VISOR (ECV)** SAMPLE ORDER NUMBER: **EPH-LS-12-GRY-ECV-ST**
- ④ LUMASPORT 8 PLAYMAKER UPLIGHT - SAMPLE ORDER NUMBER: **EPH-LS-08-PM08R-GRY-57-70-3S-BH3-TY-VHB-ST**
- ⑤ LUMASPORT 8 PLAYMAKER UPLIGHT POWER & CONTROLS BOX + MOUNTING RAILS - SAMPLE ORDER NUMBER: **EPH-PAC-PM08R-GRY-208-AM-4-MR-ST**
- Ⓐ **ACCESSORIES: MOUNTING AND BANDING** - SAMPLE ORDER NUMBER: **EPH-RPB-KIT**

① LUMASPORT 12 LIGHT HEADS

Brand	Family	Model	Power Configuration	Color	CCT	CRI	Optic	Light Head Cable (DC)
EPH = Ephesus TAA=Trade Agreements Act ¹	LS = Lumasport	12=12 optics	1000R = 10000 W Power	BLK =Black WHT =White GRY=Grey	40 = 4000K 57 = 5700K	70 = 70 CRI 80 = 80 CRI 90 = 90 CRI	1S = Silicone, Narrow 2S = Silicone, Narrow-Medium 3S = Silicone, Medium 4S = Silicone, Medium-Wide 5S = Silicone, Wide 7F = Diffusion Film, Extra Wide	C10 = 10 ft Cable BH3 = 3-pin connector on AC ² RAC = 4 ft, Retrofit Adapter Cable
<p>Notes: (1) Only product configurations with this designated prefix are built to be compliant with the Trade Agreements Act of 1979 (TAA). Please refer to DOMESTIC PREFERENCES website for more information. Components shipped separately may be separately analyzed under domestic preference requirements.</p>								<p>Notes: (2) BH3 with top mount cord is 4' with bottom mount cord length is 6'</p>

Light Head Mount	Options	Special Options
TM = Top Mount Trunnion BM = Bottom Mount Trunnion QC = Quick Clamp with Bottom Mount Trunnion SP2 = Adjustable Integral Slip fitter (2 3/8") SP3 = Slip Fitter 3" (Leads through Slip Fitter) AAJL = Adjustable arm direct pole mount	HEG = No Visor, high efficiency glass lens ECV = Extreme Cutoff Visor	ST = Standard CC = Coastal Construction
<p>Notes: (3) All mount types use a tilt range of 40-70 degrees.</p>		

QUANTITY OF LOW VOLTAGE VARIANTS (208V AC, 240V AC) FIXTURES PER POLE

LUMASPORT 12	1	2	3	4	5	6	7	8	9	10	11	12
QUANTITY OF PAC BOXES	1 PAC BOX		2 PAC BOXES		3 PAC BOXES		4 PAC BOXES		5 PAC BOXES		6 PAC BOXES	
QUANTITY OF DISTRIBUTION BOXES	1 DISTRIBUTION BOX											

QUANTITY OF HIGH VOLTAGE VARIANTS (277V AC, 347V AC, 480V AC) FIXTURES PER POLE

LUMASPORT 12	1	2	3	4	5	6	7	8	9	10	11	12	13	14	15	16	17	18	19	20	21	22	23	24
QUANTITY OF PAC BOXES	1 PAC BOX			2 PAC BOXES			3 PAC BOXES			4 PAC BOX			5 PAC BOXES			6 PAC BOXES								
QUANTITY OF DISTRIBUTION BOXES	1 DISTRIBUTION BOX																							

Note:

1. These quantities depicted are representative of LumaSport 12 white light. Quantities of PAC Boxes or lightheads supported per Distribution Box will vary if you add up-lighting or RGB fixtures.
2. Using a 277V AC line-to-neutral supply limits the number of PAC Boxes supported by a Distribution Box; the recommended maximum is five (5) PAC Boxes per distribution box for a 277V single-phase supply. Consult Ephesus if you plan to install this configuration.
3. Light heads connected per Distribution Box are limited to its maximum amperage capacity of 95a. Do not overload the Distribution Box.

2 POWER AND CONTROLS (PAC) BOX

Brand	Family	Power Configuration	Color	AC Input Voltage	Control	Light Heads ⁶	Mounting Option	Special Options ^{8,9}
EPH = Ephesus, Standard TAA=Trade Agreements Act ¹	PAC = Power and Controls box	1000R = 1000W Remote Power ²	GRY = Grey	208 = 208V AC ³ 240 = 240V AC ³ 277 = 277V AC Single Phase ^{4,5} 347 = 347V AC ⁴ 480 = 277/480V AC 3 Phase ⁴	AM = Wireless Air Mesh (Synapse) Individual LB = DMX Landburst NC = No Control	1 = 1 qty Light Head 2 = 2 qty Light Heads 3 = 3 qty Light Heads 4 = 4 qty Light Heads	MR = Mounting Rails	ST = Standard 15ft Cables XL = Extended 30ft Cables CC = Coastal Construction
Notes: (1) Only product configurations with this designated prefix are built to be compliant with the Trade Agreements Act of 1979 (TAA). Please refer to DOMESTIC.PREFERENCES website for more information. Components shipped separately may be separately analyzed under domestic preference requirements.		Notes: (2) 1000W PAC Box only available in HV 277-480V, 680W PAC Boxes will be utilized for LV		Notes: (3) Low Voltage Variants utilize dual 680W drivers per light head (4) High Voltage Variants utilize single 1000W driver per light head (5) Using a 277V AC line-to-neutral supply limits the number of PAC Boxes supported by a distribution box; the maximum is five (5) PAC Boxes per distribution box for a 277V single-phase supply. Consult Ephesus if you plan to install this configuration		Notes: (6) Low Voltage (AC Input Voltage 208V, 240V) will be 1-2 light heads per PAC Box, High Voltage (AC Input Voltage 277, 347, 480) will be up to 4 light heads per PAC Box (7) 277V single phase supply need engineering approval		Notes: (8) 15 ft standard for 3 qty PAC Box system configuration (9) 30 ft used for more than 3 qty PAC Box system configuration

3 DISTRIBUTION BOX

Brand	Family	Configuration ²	Color	AC Input Voltage	Pole Access	Special Option
EPH = Ephesus, Standard TAA=Trade Agreements Act ¹	DST = Distribution Box	6PC = Up to 6 Power & Control Boxes	GRY = Grey	208 = 208V AC 240 = 240V AC 277 = 277V AC Single Phase ³ 347 = 347V AC 480 = 277/480V AC 3 Phase	CP = Cover Plate & Adaptor (Standard)	ST = Standard CC = Coastal Construction
Notes: (1) Only product configurations with this designated prefix are built to be compliant with the Trade Agreements Act of 1979 (TAA). Please refer to DOMESTIC.PREFERENCES website for more information. Components shipped separately may be separately analyzed under domestic preference requirements.		Notes: (2) RGB Box will be field wired differently - consult installation manual for reference		Notes: (3) Using a 277V AC line-to-neutral supply limits the number of PAC Boxes supported by a Distribution Box; the recommended maximum is five (5) PAC Boxes per Distribution Box for a 277V single-phase supply. Consult Ephesus if you plan to install this configuration.		

Note: Include LumaSport 8 Playmaker Uplights when calculating Distribution Box capacity.

A EXTREME CUT-OFF VISOR (ECV) ACCESSORY ORDER INFORMATION

Brand	Family	Model	Color	Visor	Special Options
EPH = Ephesus, Standard TAA=Trade Agreements Act ¹	LS = Lumasport	12	BLK = Black WHT = White GRY = Grey	ECV = Visor, Extreme Cut-Off	ST = Standard CC = Coastal Construction
Notes: (1) Only product configurations with this designated prefix are built to be compliant with the Trade Agreements Act of 1979 (TAA). Please refer to DOMESTIC.PREFERENCES website for more information. Components shipped separately may be separately analyzed under domestic preference requirements.					

4 LUMASPORT 8 PLAYMAKER UPLIGHT

Brand	Family	Model	Power Configuration	Color ²	CCT	CRI	Optic	Light Head Cable (DC) ³
EPH = Ephesus, Standard TAA =Trade Agreements Act ¹	LS = LumaSport 8 Playmaker Remote Power	08 = 8 Optics	PM08R = Playmaker LS8 Remote	BLK = Black WHT = White GRY = Grey	40 = 4000K 57 = 5700K	70 = 70 CRI 80 = 80 CRI 90 = 90 CRI	3S = Silicone, Medium 4S = Silicone, Medium-Wide 5S = Silicone, Wide	BH3 = 3ft, 3 pin C10⁴ = 10ft Cable RAC = 3ft, Retrofit Adapter Cable
<p>Notes: (1) Only product configurations with this designated prefix are built to be compliant with the Trade Agreements Act of 1979 (TAA). Please refer to DOMESTIC PREFERENCES website for more information. Components shipped separately may be separately analyzed under domestic preference requirements.</p>								<p>Notes: (3) DC Cable connecting the light head to the driver box. (4) C10 = 10ft Cable is intended to be used with the Ephesus Catwalk Bracket.</p>

Light Head Mount ^{5,6}	Options	Special Options
TY = Top Mount Yoke QC⁷ = Quick Clamp	VHB = Bottom Visor, high efficiency glass lens	ST = Standard CC = Coastal Construction
<p>Notes: (5) Light Head Mounts shipped assembled to Light head (6) Installation type may vary with lighting design (7) QC = Quick Clamp is intended to be used to mount the light head to a 2 inch by 4 inch tubular crossarm.</p>		

LUMASPORT 8 PLAYMAKER UPLIGHTS	QUANTITY OF FIXTURES PER POLE																							
	1	2	3	4	5	6	7	8	9	10	11	12	13	14	15	16	17	18	19	20	21	22	23	24
QUANTITY OF PAC BOXES	1 PAC BOX				2 PAC BOXES				3 PAC BOXES				4 PAC BOXES				5 PAC BOXES				6 PAC BOXES			
QUANTITY OF DISTRIBUTION BOXES	1 DISTRIBUTION BOX																							

Note: Include LumaSport 8 Playmaker Uplights when calculating Distribution Box capacity.

5 POWER AND CONTROLS (PAC) BOX FOR LUMASPORT 8 PLAYMAKER UPLIGHT

Brand	Family	Power Configuration	Color ²	AC Input Voltage	Control	Light Heads	Mounting Option	Special Options
EPH = Ephesus, Standard TAA =Trade Agreements Act ¹	PAC = Power and Controls Box	PM08R = 530W Remote Power	GRY = Grey	208 = 208V AC 240 = 240V AC 277 =277V AC Single Phase ² 347 = 347V AC 480 = 277/480V AC 3 Phase	AM = Wireless Air Mesh LB = Landburst (DMX) NC = No Control	1 = 1 qty Light Head 2 = 2 qty Light Heads 3 = 3 qty Light Heads 4 = 4 qty Light Heads	MR = Mounting Rails	ST = Standard 15ft Cables ³ XL = Extended 30ft Cables ⁴ CC = Coastal Construction
<p>Notes: (1) Only product configurations with this designated prefix are built to be compliant with the Trade Agreements Act of 1979 (TAA). Please refer to DOMESTIC PREFERENCES website for more information. Components shipped separately may be separately analyzed under domestic preference requirements.</p>				<p>Notes: (2) Using a 277V AC line-to-neutral supply limits the number of PAC Boxes supported by a Distribution Box; the maximum is five (5) PAC Boxes per distribution box for a 277V single-phase supply. Consult Ephesus if you plan to install this configuration.</p>		<p>Notes: (3) 15ft standard for up to 3 PAC Boxes high (4) 30ft supports for more than 3 qty PAC Boxes high</p>		

Note: Include LumaSport 8 Playmaker Uplights when calculating Distribution Box capacity.

A BANDING ACCESSORY ORDER INFORMATION

Brand	Accessory	Option
EPH = Ephesus	RPB = Remote Power Pole Banding	KIT = Banding Kit (Banding, Buckles, Tool) BND = Banding, 100ft roll BKL = Buckle, 100 quantity per pack BTL = Banding Tool
Notes: The quantity of banding and banding buckles needed is determined by the circumference of the pole, the quantity of PAC Boxes (quantity 3 bands per PAC Box required for mounting), and Distribution Boxes (quantity 2 bands per Distribution Box required for mounting). A typical 18-inch diameter pole using quantity 3 PAC Boxes and quantity 1 Distribution Box will utilize 60-70 feet of banding per pole.		

EPH-RPB-KIT = Banding Kit Components

	Banding Tool (EPH-RPB-BTL)	Banding (EPH-RPB-BND)	Banding Buckle (EPH-RPB-BKL)
Description	Tensioning tool for 3/4 inch stainless steel banding	Heavy duty 3/4 inch x .030 inch thick type 201 stainless steel banding.	Type 201 stainless steel banding buckle for 3/4 inch stainless steel banding.
Quantity	1 tool	2 rolls, 100 foot per roll	1 box, 100 qty per box.

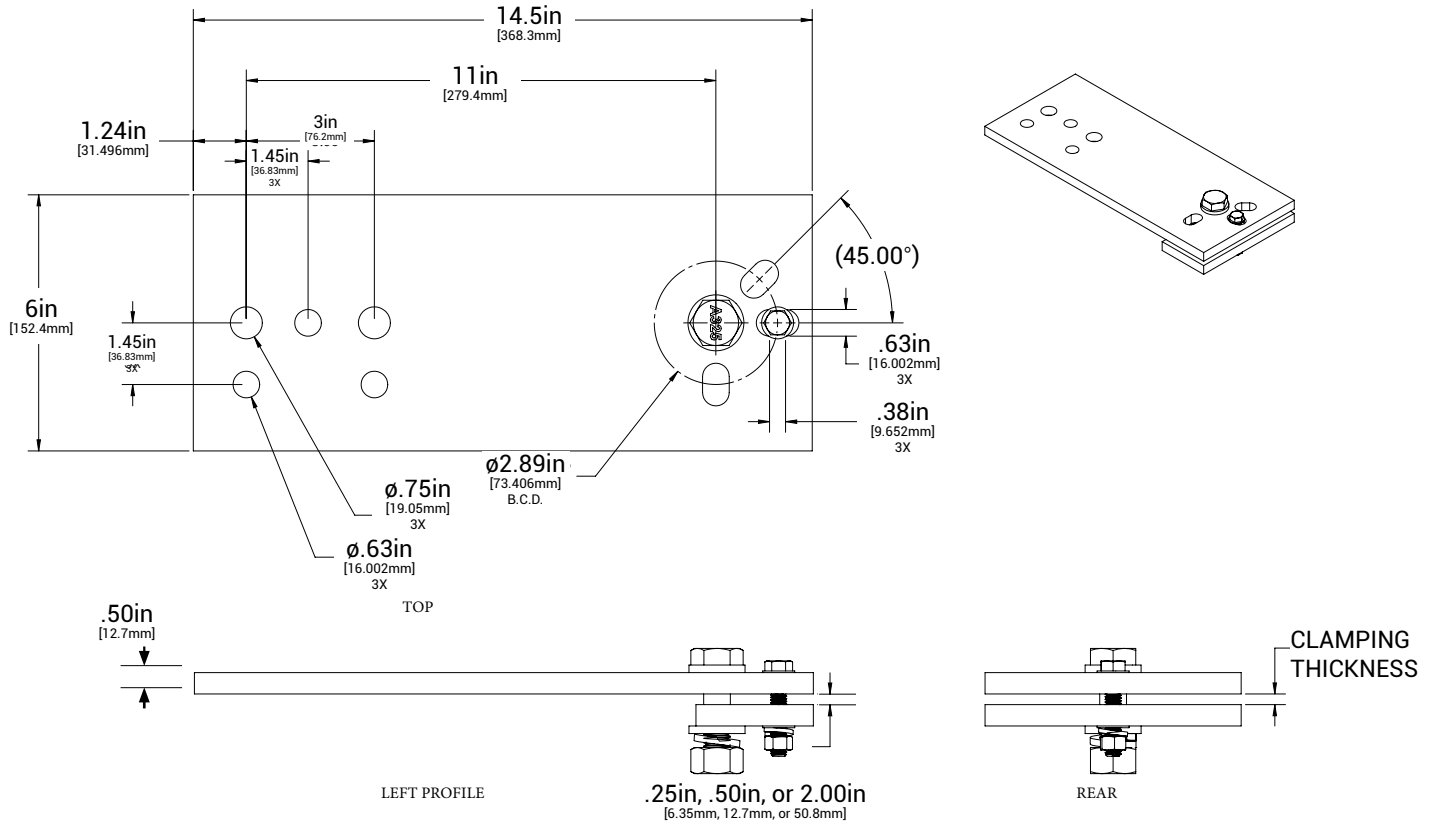
Ordering Information for Accessories

NOTE: A complete accessory order requires a selection entry for **Brand, Accessory, Option**.

SAMPLE ORDER NUMBER: **EPH-HRDM34-025**

Brand	Accessory	Option	Intended Use
EPH = Ephesus	EXTPLT = Extension Plate ¹	025 = .25in 050 = .5in 200 = 2.0in	Extension Plate Kit to mount to structures .25in, .5in, or 2.00in thick. Designed to be used with the LUMASPORT 12, LUMASPORT 8 - Local, LUMASPORT 8 - Integral, LUMADAPT 8, LUMASPORT 8 PRISM - Local luminaires only.
	DVGBRD = Diving Board ²		Diving Board to mount to 2in x 4in steel cross arms. Designed to be used with the LUMASPORT 12, LUMASPORT 16 - Local, LUMASPORT 8 - Local, LUMASPORT 8 - Integral, LUMADAPT 8, LUMASPORT 8 PRISM - Local luminaires only.
	HRDM58 = Mounting Hardware 5/8in diameter	050 = .375in - .50in Range of Clamping Thickness ³ 200 = 2in Clamping Thickness ³	HRDM58-050 : .375-.500in clamping thickness, Use for Extension Plate (EXTPLT) or other flat surfaces drilled for 5/8in hardware HRDM58-200 : 2.00in clamping thickness, use for 2in x 4in Cross arms that are drilled for 5/8in hardware
	HRDM34 = Mounting Hardware 3/4in diameter	025 = .25in ⁴ 075 = .75in ⁴ 200 = 2in ⁴	HRDM34-025 : .25-.50in clamping thickness, use for diving board (DVGBRD) or other flat surfaces drilled for 3/4in hardware HRDM34-075 : .50-.75in clamping thickness, flat surfaces drilled for 3/4in hardware HRDM34-200 : 2.00in clamping thickness, use for 2in x 4in Cross arms that are drilled for 3/4in hardware
	SRA238 = Slipfitter Spacer		Used with the SP2 & SP3 Slipfitter mount to fasten luminaire to a 2 3/8in or 3in outer diameter tenon size.
	Notes: (1) Additional mounting fastener hardware kit needed to attach a fixture to the EXTPLT = Extension Plate (2) Additional mounting fastener hardware kit needed to attach a fixture to the DVGBRD = Diving Board	Notes: (3) Option only available for use with HRDM58 (4) Option only available for use with HRDM34	

Extension Plate (EXTPLT) Dimension and Part Details:



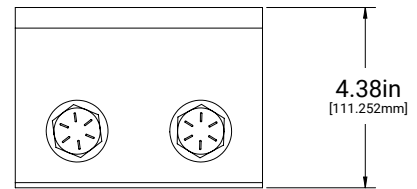
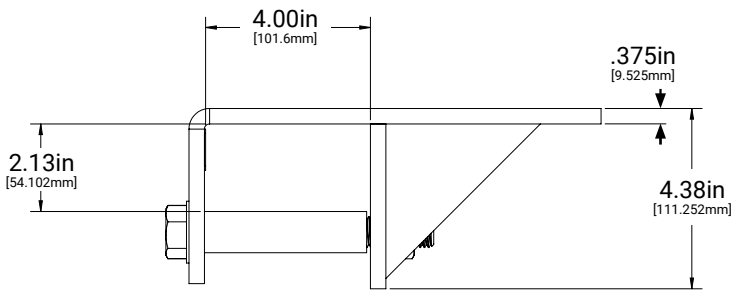
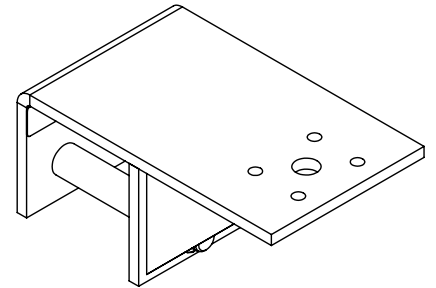
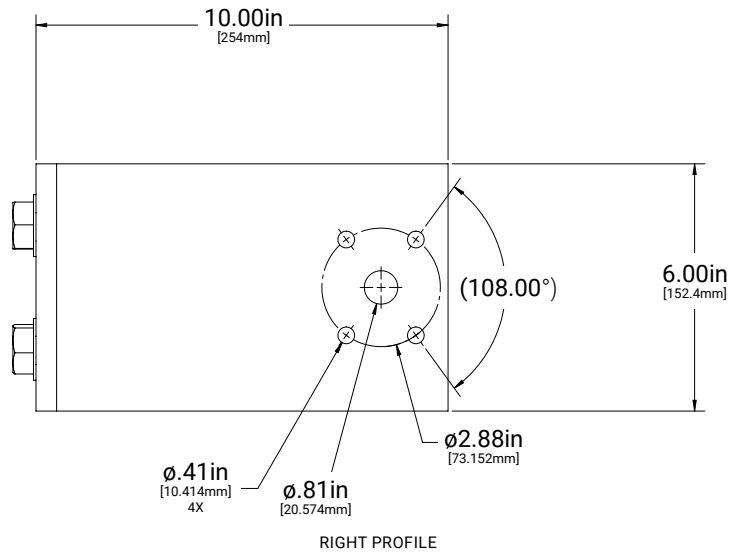
Extension Plate Data

MODEL #	WEIGHT (LBS)
EXTPLT	14.63
EXTPLT + HRDM58-050	15.28

Extension Plate Kit Parts

DESCRIPTION	QUANTITY
Extension Plate	1
Washer Plate	1
5/8in Hex Bolt	1
5/8in Washer	2
5/8in-11 Hex Nut	1
5/8in Split Washer	1
3/8in Washer	2
3/8in Hex Bolt	1
3/8in Split Washer	1
3/8in-16 Hex Nut	1

Diving Board (DVGBRD) Dimension and Part Details:



Diving Board Data

MODEL #	WEIGHT (LBS)
DVGBRD	15.1
DVGBRD + HRDM34-025	16.1

Diving Board Parts

DESCRIPTION	QUANTITY
Welded Bracket	1
Bolt Sleeve	2
3/4in-10 X 6in Structural Hex Bolt, Hot Dip Galvanized	2
3/4in Steel Flat Washer, Hot Dip Galvanized	2
3/4in Ext Tooth Washer, Steel, Magni-565 Grey Poly-coat	2
3/4in-10 Structural Steel Hex Nut, Hot Dip Galvanized	2
Stainless Shim	1

HRDM58 Dimension and Part Details:

HRDM58-050:

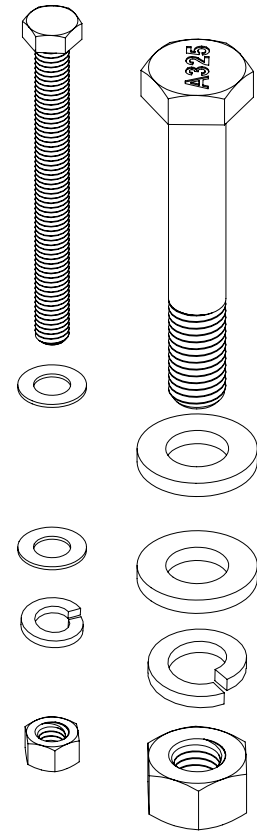
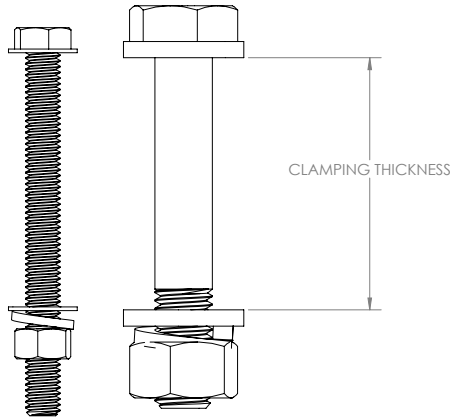
.375-.500in clamping thickness, Use for Extension Plate (EXTPLT) or other flat surfaces drilled for 5/8in hardware

HRDM58-200:

2.00in clamping thickness, use for 2in x 4in Cross arms that are drilled for 5/8in hardware

HRDM58 Data

MODEL #	WEIGHT (LBS)
HRDM58-050	.65
HRDM58-200	.84



HRDM34 Dimension and Part Details:

HRDM34-025:

.25-.50in clamping thickness, use for diving board (DVGBRD) or other flat surfaces drilled for 3/4in hardware

HRDM34-075:

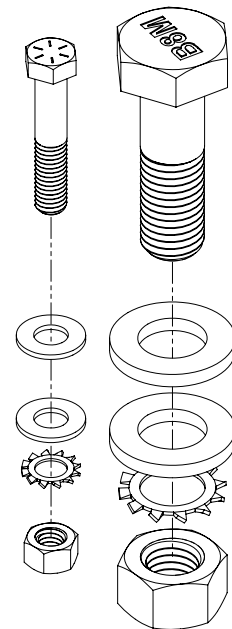
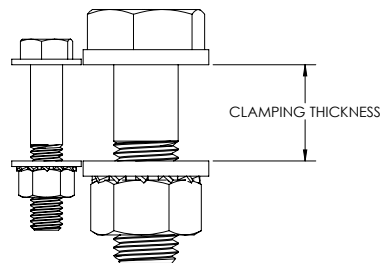
.50-.75in clamping thickness, flat surfaces drilled for 3/4in hardware

HRDM34-200:

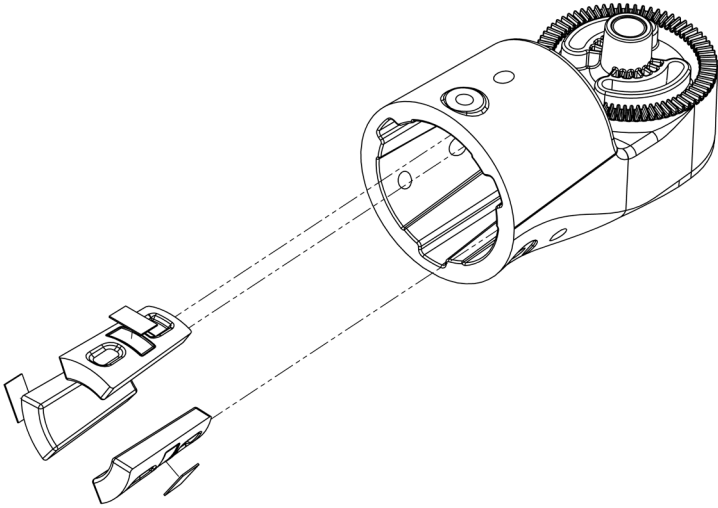
2.00in clamping thickness, use for 2in x 4in Cross arms that are drilled for 3/4in hardware

HRDM34 Data

MODEL #	WEIGHT (LBS)
HRDM34-025	1
HRDM34-075	1.5
HRDM34-200	2



Slipfitter Mounting Accessory Part Details:

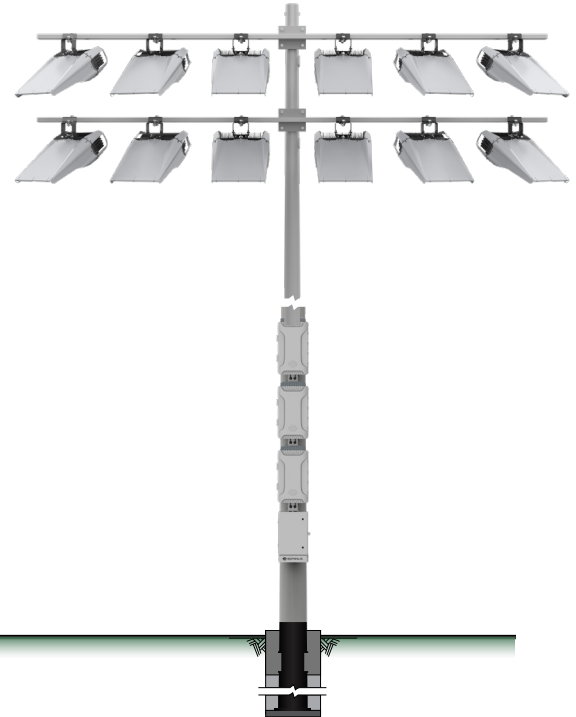
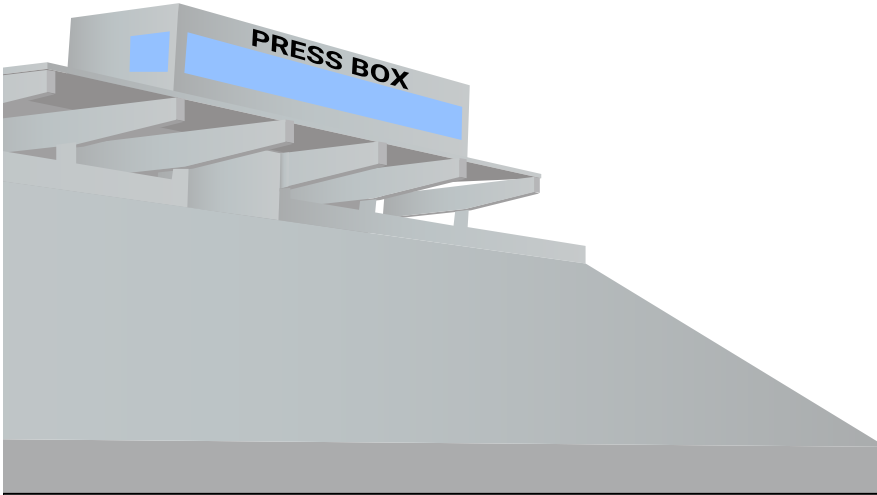


Slipfitter Spacer (SRA238)

SAMPLE ORDER: NEW INSTALLATION

Example Order - New (480VAC, AM CONTROLS)

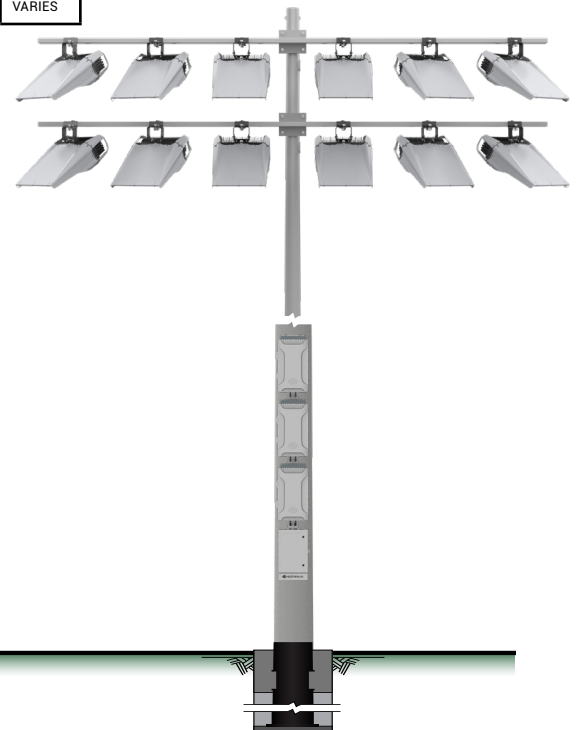
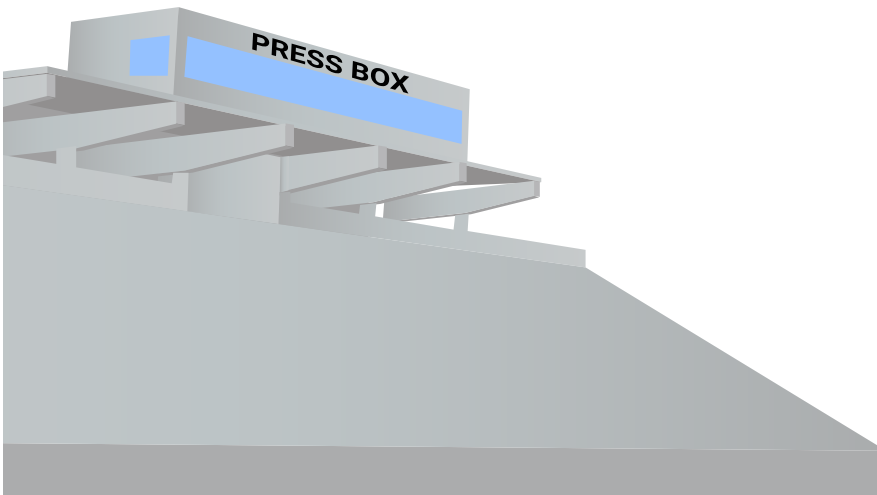
Cat Logic	Description	Qty.
EPH-LS-12-1000R-GRY-57-70-XX-BH3-BM-ECV-ST	LIGHT HEAD, 3 PIN CONNECTOR, BOTTOM MOUNT TRUNNION (VARIOUS OPTICS)	12
EPH-PAC-1000R-GRY-480-AM-4-MR	PAC BOX, 4 QTY LIGHT HEADS PER PAC BOX	3
EPH-DST-6PC-GRY-480-CP-ST	DISTRIBUTION BOX	1
EPH-LTGSTR-P	NEW CROSSARMS & CABLING	VARIES



SAMPLE ORDER: RETROFIT Installation

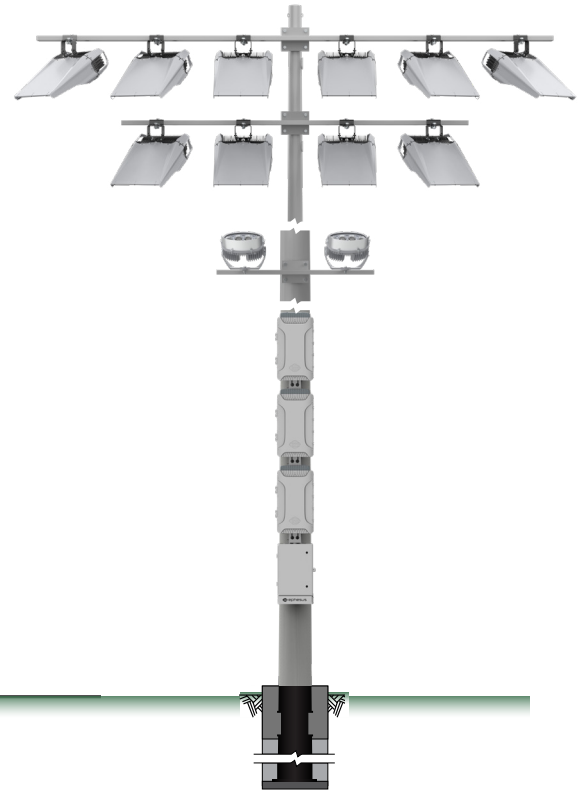
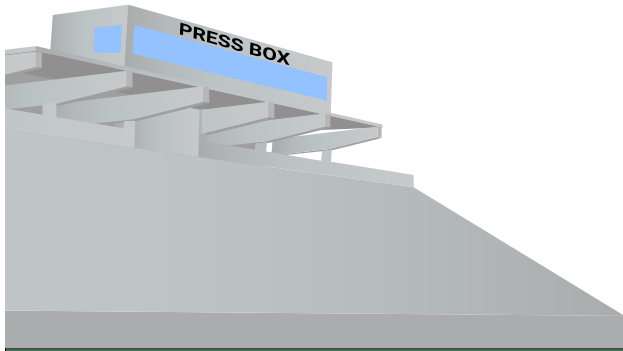
Example Order - New (480VAC, AM CONTROLS)

Cat Logic	Description	Qty.
EPH-LS-12-1000R-GRY-57-70-XX-RAC-QC-ECV-ST	LIGHT HEAD, RETROFIT ADAPTER CABLE, QUICK CLAMP (VARIOUS OPTICS)	12
EPH-PAC-1000R-GRY-480-AM-4-MR	PAC BOX, 4 QTY LIGHT HEADS PER PAC BOX	3
EPH-DST-6PC-GRY-480-CP-ST	DISTRIBUTION BOX	1
EPH-RPB-KIT	BANDING KIT (1 TOOL, 200FT BANDING, 100 QTY. BUCKLES)	VARIES



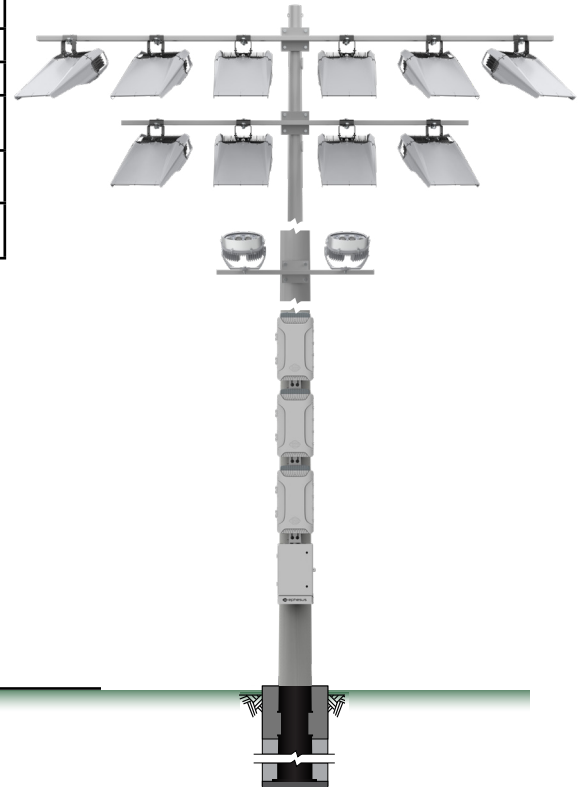
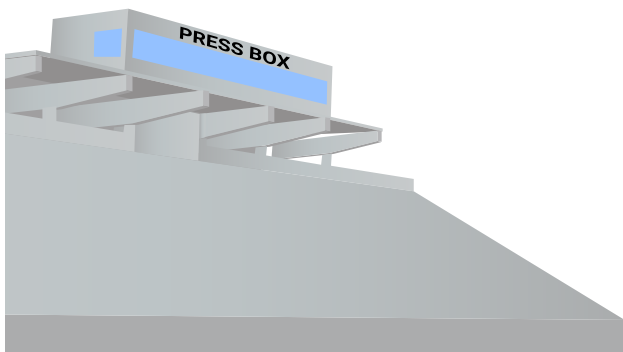
SAMPLE ORDER: NEW INSTALLATION WITH UPLIGHTING

Example Order - New (480VAC, AM CONTROLS)		
Cat Logic	Description	Qty.
EPH-LS-12-1000R-GRY-57-70-XX-BH3-BM-ECV-ST	LIGHT HEAD, 3 PIN CONNECTOR, BOTTOM MOUNT TRUNNION (VARIOUS OPTICS)	10
EPH-PAC-1000R-GRY-480-AM-4-MR-ST	PAC BOX, 4 QTY LIGHT HEADS PER PAC BOX	2
EPH-PAC-1000R-GRY-480-AM-2-MR-ST	PAC BOX, 2 QTY LIGHT HEADS PER PAC BOX	1
EPH-DST-6PC-GRY-480-CP-ST	DISTRIBUTION BOX	1
EPH-LS-08-PM08R-GRY-57-70-XX-BH3-TM-VHB-ST	PLAYMAKER LIGHT HEAD, 3 PIN CONNECTOR, TOP MOUNT TRUNNION (VARIOUS OPTICS)	2
EPH-PAC-PM08R-GRY-480-AM-2-MR-ST	PLAYMAKER PAC BOX, 2 QTY LIGHT HEADS PER PAC BOX	1
EPH-LTGSTR-P	NEW CROSSARMS & CABLING	VARIES



SAMPLE ORDER: RETROFIT Installation WITH UPLIGHTING

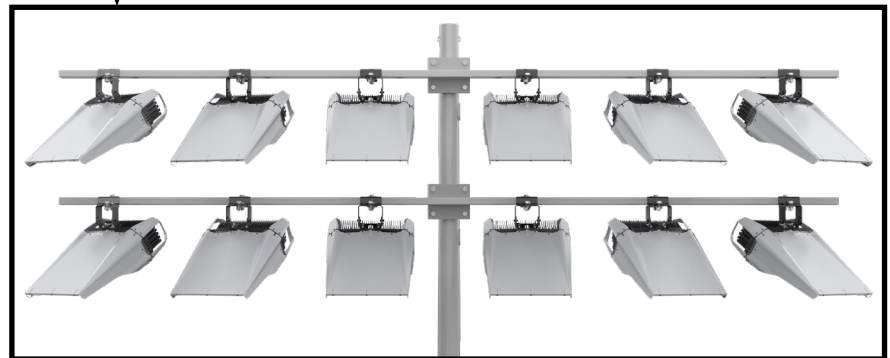
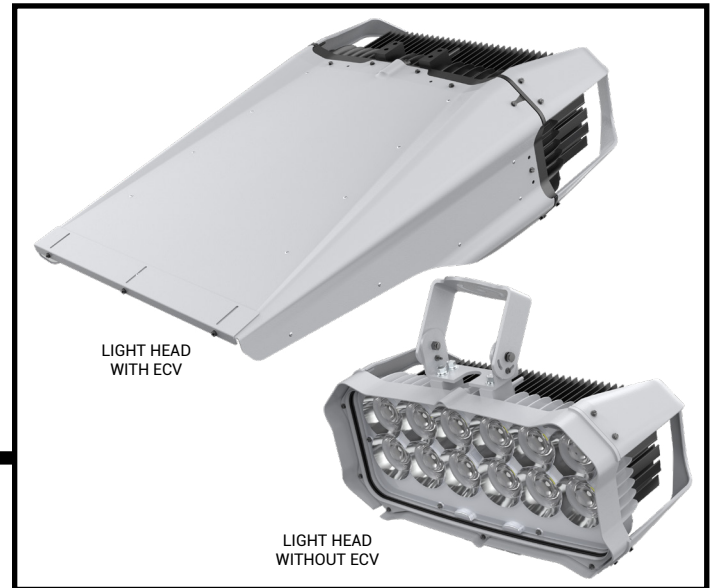
Example Order - New (480VAC, AM CONTROLS)		
Cat Logic	Description	Qty.
EPH-LS-12-1000R-GRY-57-70-XX-RAC-QC-ECV-ST	LIGHT HEAD, RETROFIT ADAPTER CABLE, QUICK CLAMP (VARIOUS OPTICS)	10
EPH-PAC-1000R-GRY-480-AM-4-MR-ST	PAC BOX, 4 QTY LIGHT HEADS PER PAC BOX	2
EPH-PAC-1000R-GRY-480-AM-4-MR-ST	PAC BOX, 2 QTY LIGHT HEADS PER PAC BOX	1
EPH-DST-6PC-GRY-480-CP-ST	DISTRIBUTION BOX	1
EPH-LS-08-PM08R-GRY-57-70-XX-RAC-QC-VHB-ST	PLAYMAKER LIGHT HEAD, RETROFIT ADAPTER CABLE, QUICK CLAMP (VARIOUS OPTICS)	2
EPH-PAC-PM08R-GRY-480-AM-2-MR-ST	PLAYMAKER PAC BOX, 2 QTY LIGHT HEADS PER PAC BOX	1
EPH-RPB-KIT	BANDING KIT (1 TOOL, 200FT BANDING, 100 QTY. BUCKLES)	1



LIGHT HEAD OVERVIEW

Performance Data¹

	LUMASPORT 12 (1000W)
Lumen Output Range	124,000 - 171,000lm
Lumen Output Range with ECV	101,000 - 143,000lm
Nominal Input Power (AC) ²	1051W
Efficacy Range	112 - 164lm/W
Efficacy Range with ECV	98-137lm/W
CRI ³	70, 80, 90
TLCI ⁴	75
CCT Range	4000K, 5700K
Distribution (NEMA) ⁵	NEMA 3 - 6
Dimming Range	DIM TO OFF, 10%-100%
Operating Temperature Range	-40°C to +40°C
Usage ⁶	INDOOR, OUTDOOR
Mounting Options (1.5G RATED)	TOP MOUNT TRUNNION, BOTTOM MOUNT TRUNNION, QUICK CLAMP, ADJUSTABLE INTEGRAL SLIP FITTER (2 3/8"), SLIP FITTER 3", ADJUSTABLE ARM DIRECT POLE MOUNT
Electrical Certifications	FCC, UL8750, UL1598
Environmental Certifications	IP66
Vibration	ANSI C136.31-2023 1.5G
Effective Projected Area (EPA)	2.16-2.64 (sq. ft.)
Effective Projected Area (EPA) with ECV ⁸	2.64-5.68 (sq. ft.)
Approximate Weight ⁹	LIGHT HEAD + 34.7 LBS VISOR + 7.8 LBS TRUNNION + 4.6 LBS ADJUSTABLE SLIPFITTER 3" INCH OD (SP³) + 9.47 LBS ADJUSTABLE POLE MOUNT ARM (AAJL) + 7.1 LBS ADJUSTABLE SLIPFITTER 2 3/8 INCH OD (SP²) + 7.85 LBS Quick Clamp/Trunion + 12.415 LBS



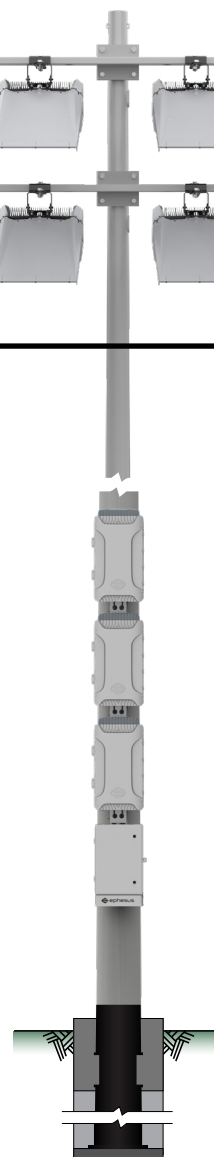
NOTES:

- (1) Specifications are subject to change without notice.
- (2) Values are +/- 5 % when fixture is operated at 25°C ambient
- (3) Values are +/- 2%
- (4) Values are +/- 3 points.
- (5) Optic = NEMA TYPE; BEAM ANGLE; FIELD ANGLE. Additional optical performance data within spec sheet.
- (6) Indoor use limited to input voltages 277-480V.
- (7) LumaSport 12 with Extreme Cutoff Visors (ECV) qualifies for ANSI C136.31-2023 1.5G
- (8) EPA may vary depending on the aiming angle of the fixture.
- (9) Weight may vary depending on mounting bracket, visor option, and light head configuration.

* All values may vary by +/-10% of rated values.

Light Head Electrical Specifications

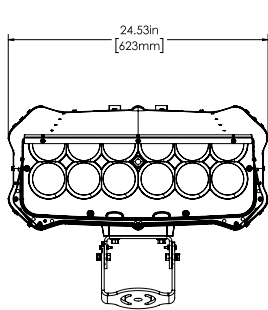
Product	Total Drive Current	DC Voltage	DC Light Head Power
EPH-LS12-1000R (LV drivers)	4.7 A	210 V	987 W
EPH-LS12-1000R (HV drivers)	4.7 A	210 V	987 W



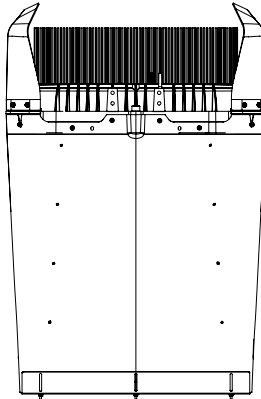
LIGHT HEAD: DIMENSIONAL DETAILS

Light Head: TM = Top Mounted Trunnion with Extreme Cut-off Visor (ECV)

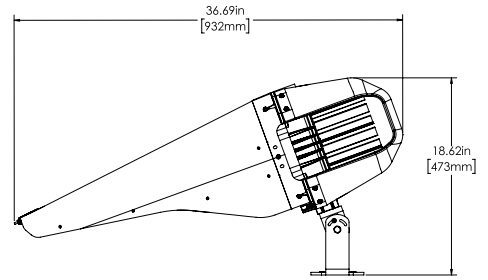
Note: When combined with the Extreme Cutoff Visor (ECV), use only at tilt range of 40 to 70 degrees with this Light Head Mount configuration.



HEAD ON

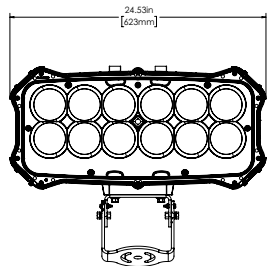


TOP PROFILE

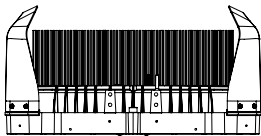


LEFT PROFILE

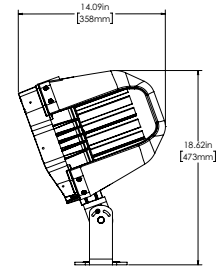
Light Head: TM = Top Mounted Trunnion without Extreme Cut-off Visor (ECV)



HEAD ON

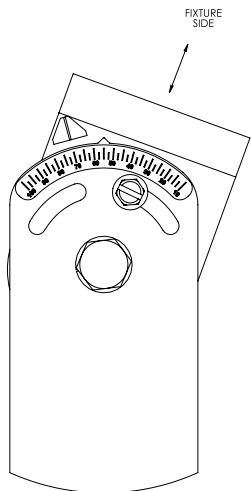


TOP PROFILE



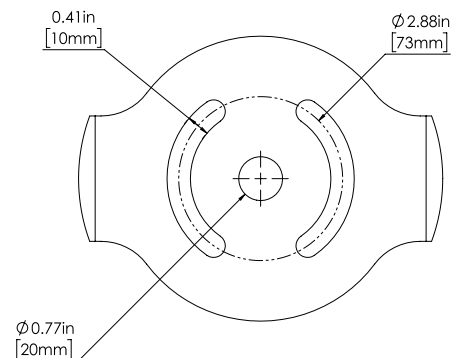
LEFT PROFILE

Light Head: TM = Trunnion Mounting Pattern Detail



LIGHT HEAD: TRUNNION MOUNTING PATTERN DETAIL: **TOP MOUNT**
FOR DIMENSIONAL DETAILS REFER TOP MOUNT PAGE

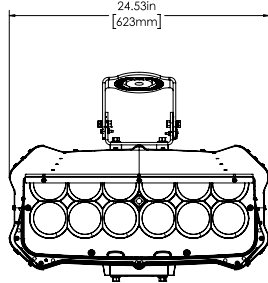
NOTE: SHOW DETAILVIEW ATTACHED TO RESPECTIVE CIRCLE



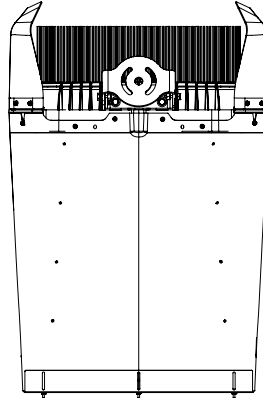
LIGHT HEAD: DIMENSIONAL DETAILS

Light Head: BM = Bottom Mounted Trunnion with Extreme Cut-off Visor (ECV)

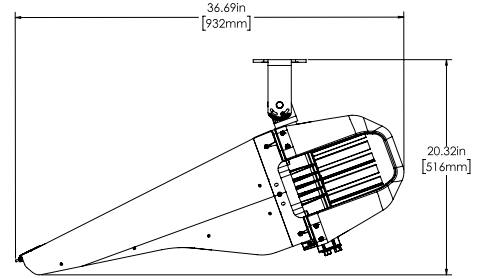
Note: When combined with the Extreme Cutoff Visor (ECV), use only at tilt range of 40 to 70 degrees with this Light Head Mount configuration.



HEAD ON

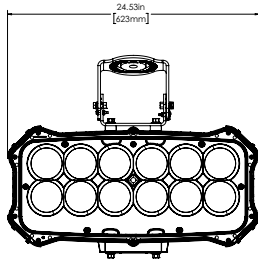


TOP PROFILE

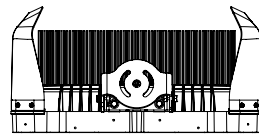


LEFT PROFILE

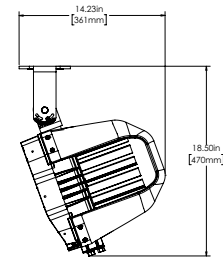
Light Head: BM = Bottom Mounted Trunnion without Extreme Cut-off Visor (ECV)



HEAD ON

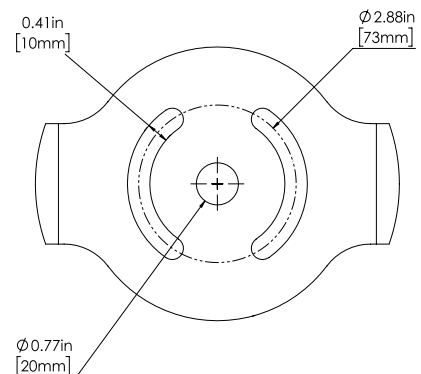
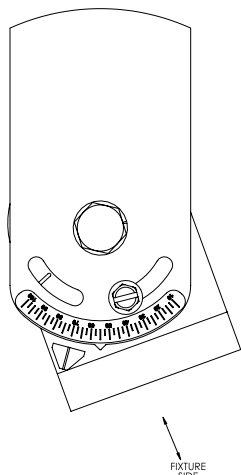


TOP PROFILE



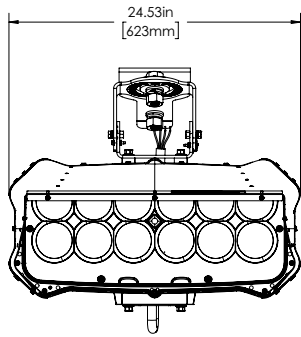
LEFT PROFILE

Light Head: BM = Trunnion Mounting Pattern Detail

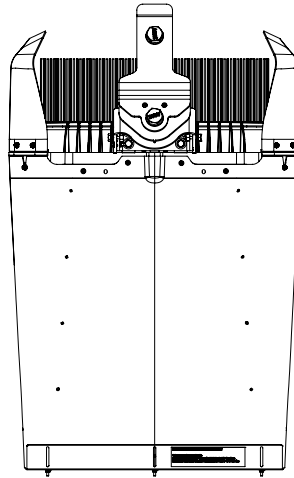


Light Head: QC = Quick Clamp with Bottom Mount Trunion with Extreme Cut-off Visor (ECV)

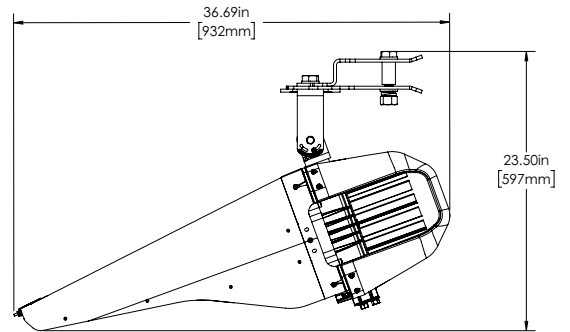
Note: When combined with the Extreme Cutoff Visor (ECV), use only at tilt range of 40 to 70 degrees with this Light Head Mount configuration.



HEAD ON

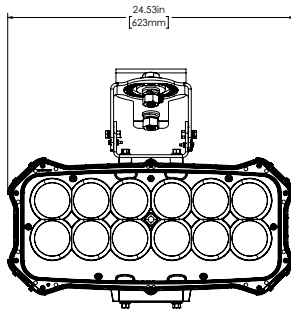


TOP PROFILE

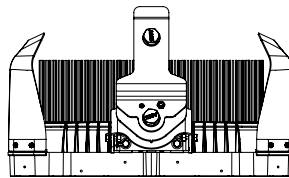


LEFT PROFILE

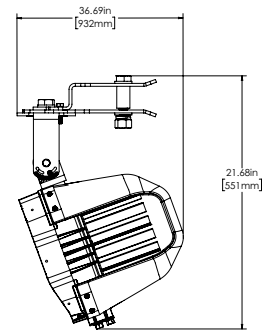
Light Head: QC = Quick Clamp with Bottom Mount Trunion without Extreme Cut-off Visor (ECV)



HEAD ON



TOP PROFILE



LEFT PROFILE



RIGHT PROFILE

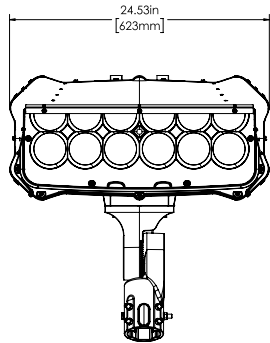


*Note: Mounting hardware included with quick clamp

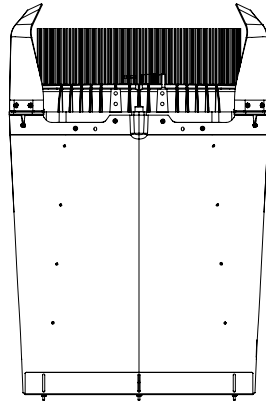
LIGHT HEAD: DIMENSIONAL DETAILS

Light Head: SP2 = Adjustable Integral Slip Fitter 2 3/8in with Extreme Cut-off Visor (ECV)

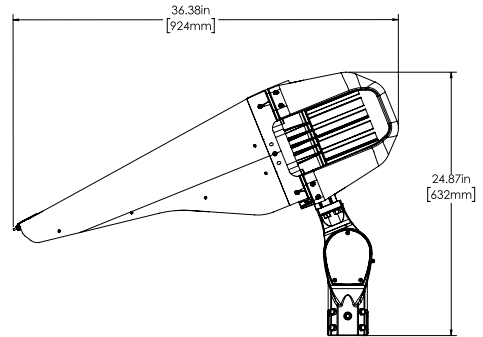
Note: When combined with the Extreme Cutoff Visor (ECV), use only at tilt range of 40 to 70 degrees with this Light Head Mount configuration.



HEAD ON

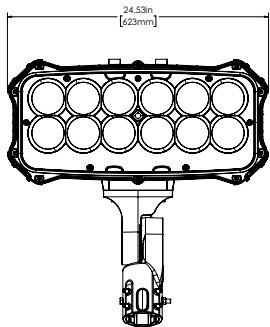


TOP PROFILE

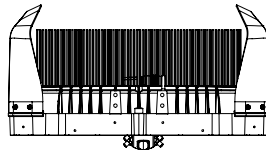


LEFT PROFILE

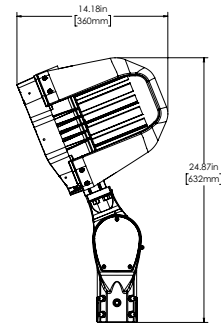
Light Head: SP2 = Adjustable Integral Slip Fitter 2 3/8in without Extreme Cut-off Visor (ECV)



HEAD ON

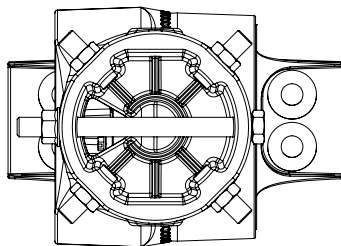
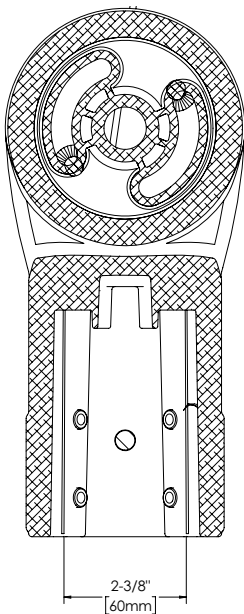


TOP PROFILE



LEFT PROFILE

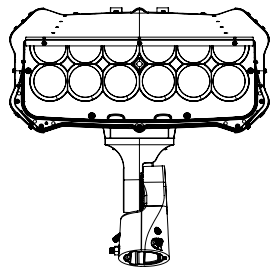
Light Head: SP2 = Adjustable Integral Slip Fitter 2 3/8in Mounting Detail



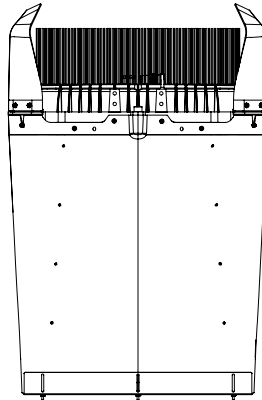
BOTTOM PROFILE

Light Head: SP3 = Slip Fitter 3in (with leads through slip fitter) with Extreme Cut-off Visor (ECV)

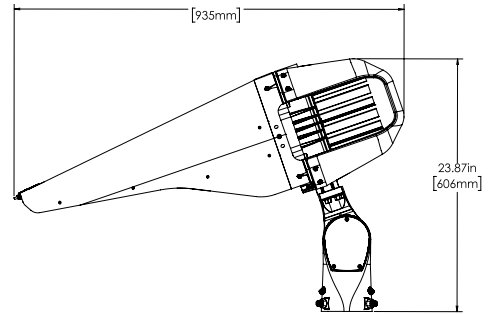
Note: When combined with the Extreme Cutoff Visor (ECV), use only at tilt range of 40 to 70 degrees with this Light Head Mount configuration.



HEAD ON

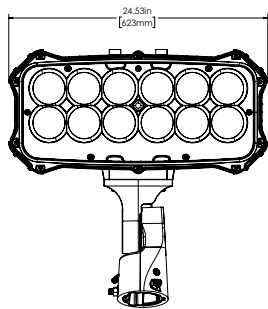


TOP PROFILE

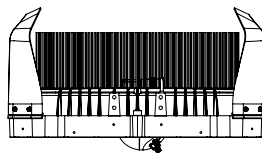


LEFT PROFILE

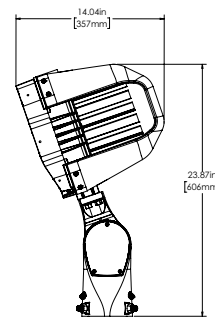
Light Head: SP3 = Slip Fitter 3in (with leads through slip fitter) without Extreme Cut-off Visor (ECV)



HEAD ON

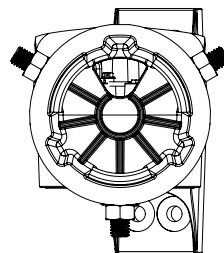
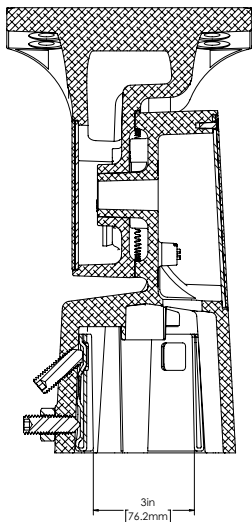


TOP PROFILE



LEFT PROFILE

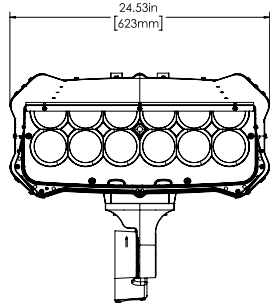
Light Head: SP3 = Slip Fitter 3in (with leads through slip fitter) Mounting Pattern Detail



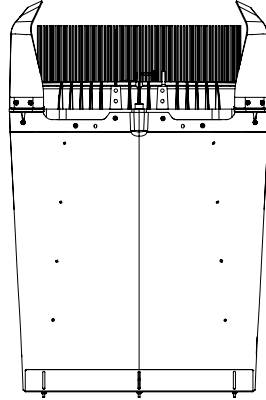
BOTTOM PROFILE

Light Head: AAJL = Adjustable arm direct pole mount with Extreme Cut-off Visor (ECV)

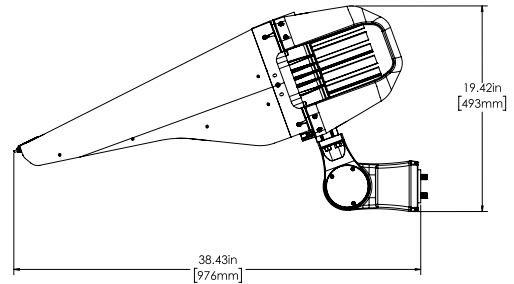
Note: When combined with the Extreme Cutoff Visor (ECV), use only at tilt range of 40 to 70 degrees with this Light Head Mount configuration.



HEAD ON

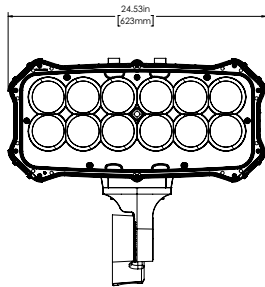


TOP PROFILE

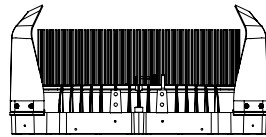


LEFT PROFILE

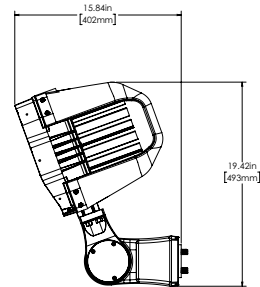
Light Head: AAJL = Adjustable arm direct pole mount without Extreme Cut-off Visor (ECV)



HEAD ON

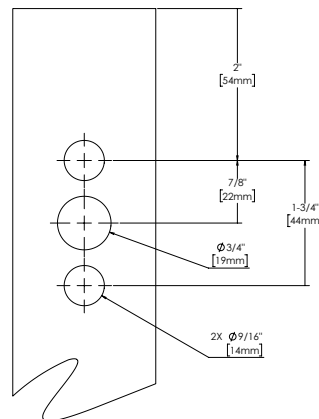
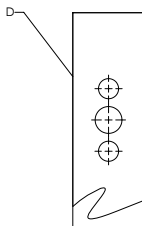


TOP PROFILE



LEFT PROFILE

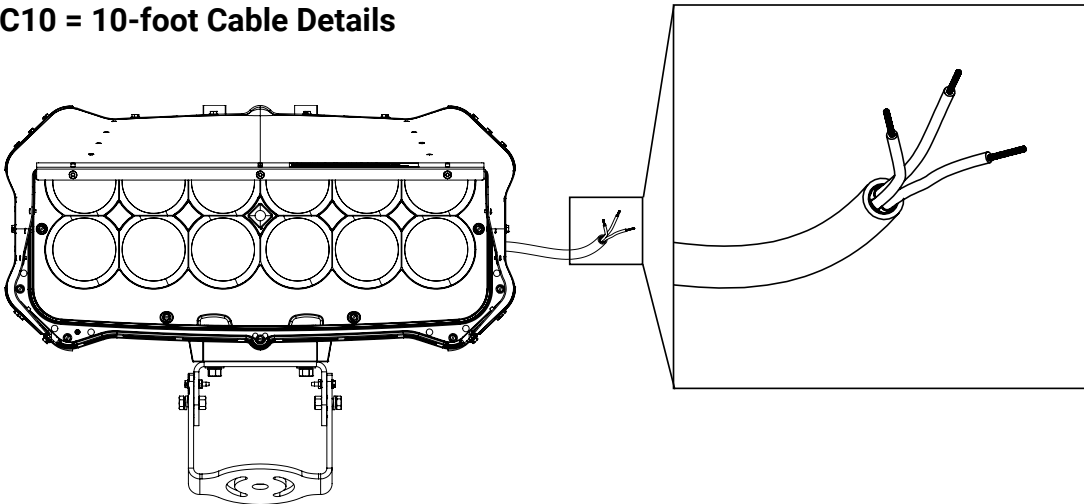
Light Head: AAJL = Adjustable arm direct pole mount Mounting Pattern Detail



WARNING: Customer is responsible for engineering analysis to confirm pole and fixture compatibility for all applications. Refer to [Pole Drill Patterns Document](#) for additional support information.

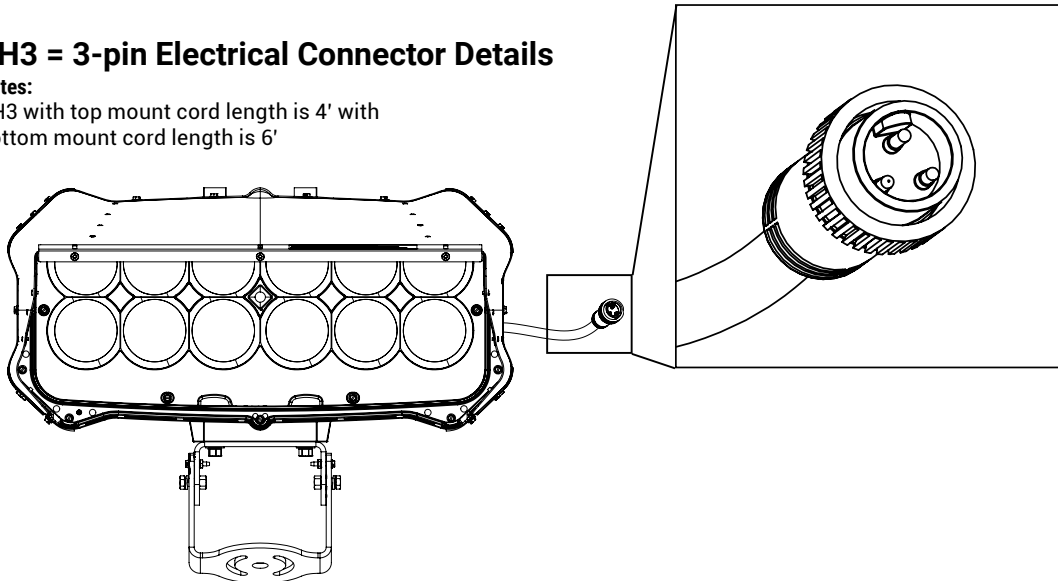
LIGHT HEAD: ELECTRICAL ATTACHMENT METHODS

C10 = 10-foot Cable Details

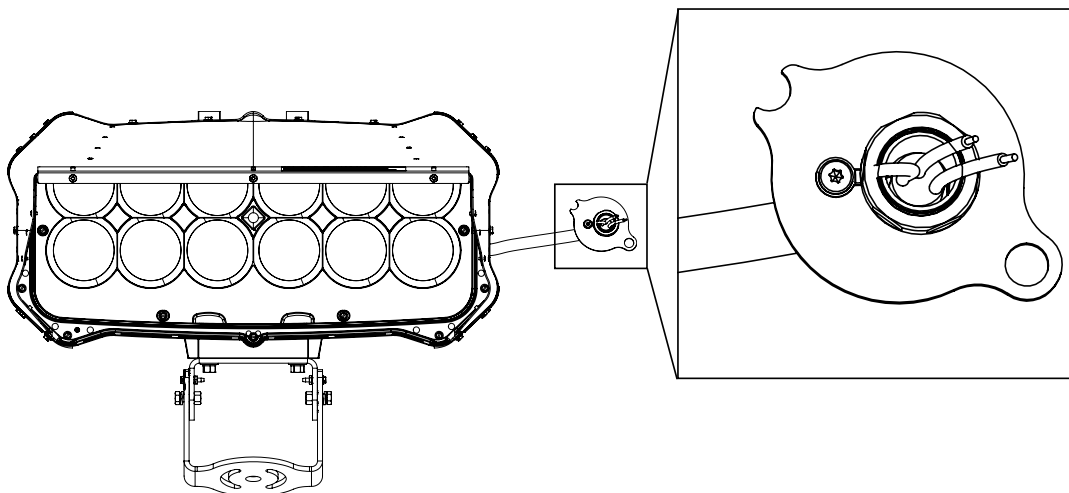


BH3 = 3-pin Electrical Connector Details

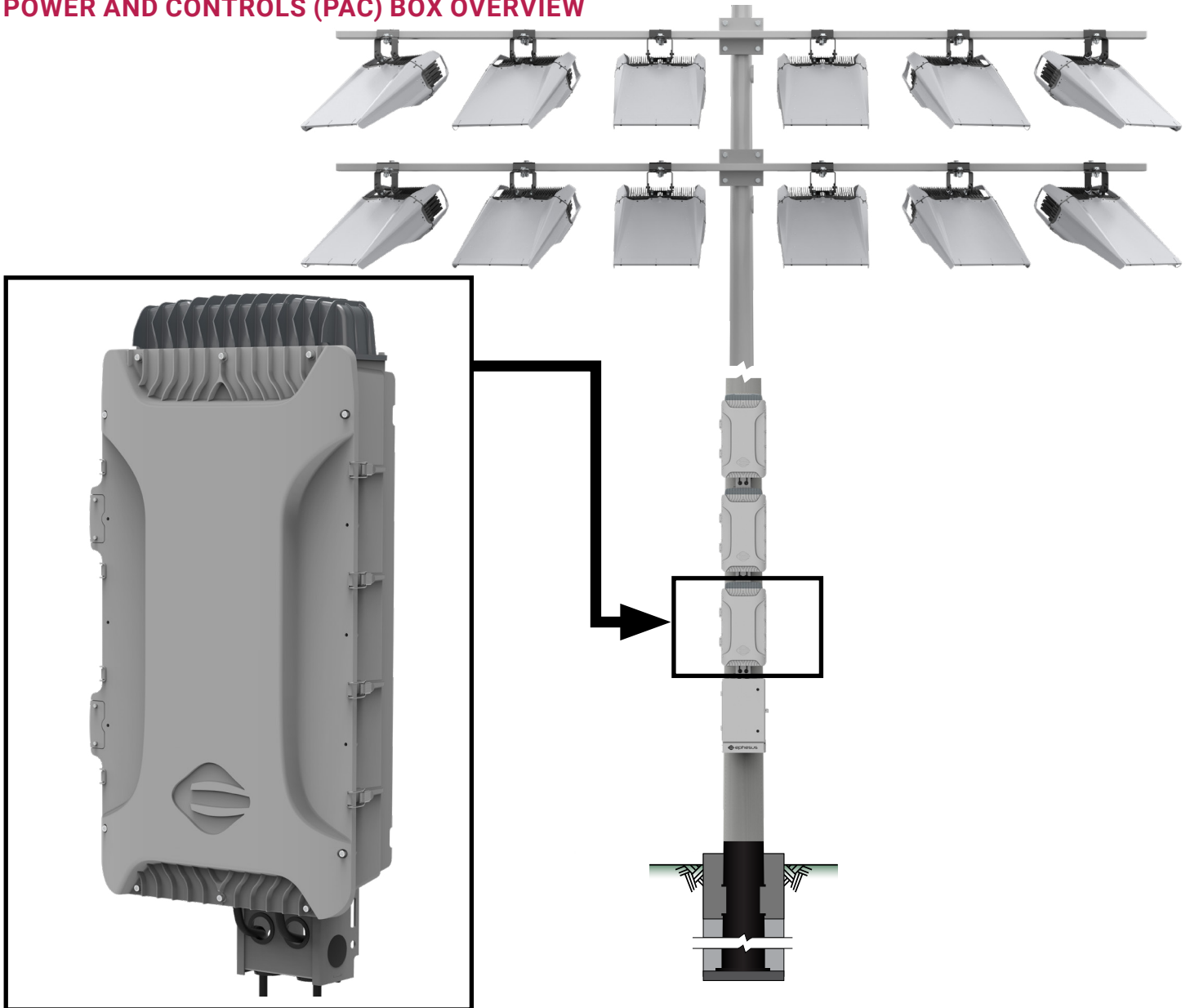
Notes:
 BH3 with top mount cord length is 4' with
 bottom mount cord length is 6'



RAC = 4 ft Retrofit Adaptor Cable Electrical Connector Details



POWER AND CONTROLS (PAC) BOX OVERVIEW



EPH-PAC-1000R	
Operating Temperature Range	-40C to 40C
Usage	Indoor / Outdoor
Environmental Certifications	IP66
Compliance	UL1598, UL8750, FCC
Effective Projected Area (EPA)	5.5 ft^2
Weight	Weight (LV PAC Box): 66lbs
	Weight (HV PAC Box): 73lbs

POWER AND CONTROLS (PAC) BOX ELECTRICAL PERFORMANCE INFORMATION

LUMASPORT 12 Power and Controls (PAC) Box Electrical Specifications

2-Qty LumaSport 12 Light heads per Remote PAC Box									
Product	Input AC Voltage (VAC)	Surge AC Protection (KV)	AC Power per light head (W)	System Power (2x Light heads) (W)	Input AC Current (A)	Power Factor	THDi	Inrush period @50% Ipeak (msec)	Peak Inrush Current (A)
EPH-LS12-1000R (LV drivers)	208 V	10KV	1073	2145	10.32	> 0.9	<10%	8.32	28
	240 V		1070	2140	8.97				

4-Qty LumaSport 12 Light heads per Remote PAC Box									
Product	[1] Input AC Voltage (VAC)	Surge Protection (KV)	AC Power per light head (W)	System Power (2x Light heads) (W)	Input AC Current (A)	Power Factor	THDi	Inrush period @50% Ipeak (msec)	Peak Inrush Current (A)
EPH-LS12-1000R (HV drivers)	277 V	10KV	1041	4163	14.96	> 0.9	<10%	6.72	42
	347 V		1036	4143	11.91				
	480 V		1035	4139	8.77				

NOTE:

[1] Engineering Approval is required for using AC 277V AND 347V single-phase supply system

- All values are measured at 25°C ambient .
- Power values may vary by +/-5% of rated values.
- Inrush current and Inrush period @50% peak value are calculated as per the specification sheet of the DC power supply

Playmaker Power and Controls (PAC) Box Electrical Specifications*

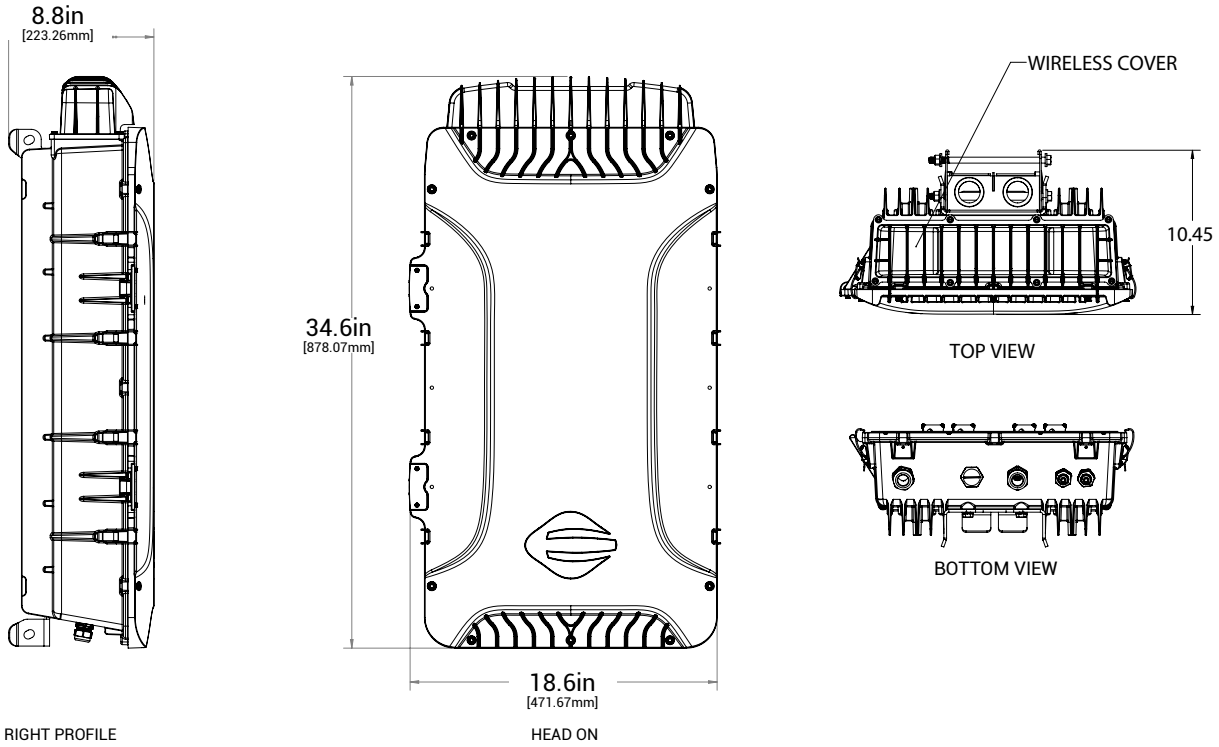
Product	[1] Input AC Voltage (Vac)	Surge Protection (KV)	AC Power per light head (W)	Power per PAC Box (W)	Input AC Current per PAC Box (A)	Power Factor	THDi(%)	Inrush period @50% Ipeak (msec)	Peak Inrush Current (A)
EPH-PAC-PM08R (LOW VOLTAGE DRIVERS)	208	10KV	556	2224	10.68	> 0.9	<10%	8.32	28.00
	240		553	2212	10.09				
EPH-PAC-PM08R (HIGH VOLTAGE DRIVERS)	277	10KV	550	2200	7.96	> 0.9	<10%	5.77	24.89
	347		549	2198	6.34			3.11	
	480		550	2201	4.75			3.05	

Note:

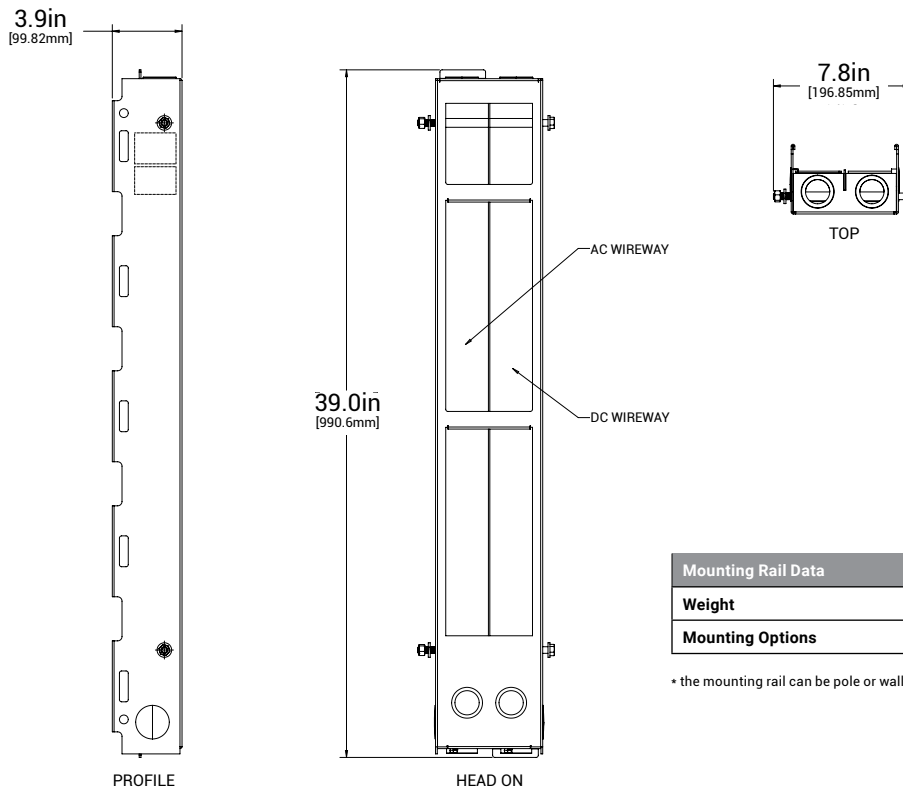
[1] Engineering Approval is required for using AC 277V AND 347V single-phase supply system

- All values are measured at 25°C ambient .
- Power values may vary by +/-5% of rated values.
- Inrush current and Inrush period @50% peak value are calculated as per the specification sheet of the DC power supply
- LumaSport 8 Playmaker Uplights

PAC BOX: DIMENSIONAL DETAILS



Mounting Rail for PAC Box Dimensional Details



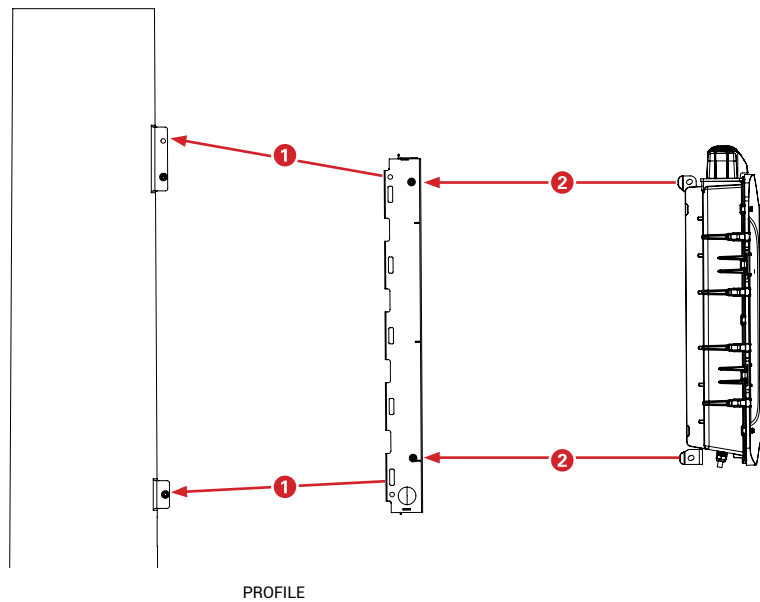
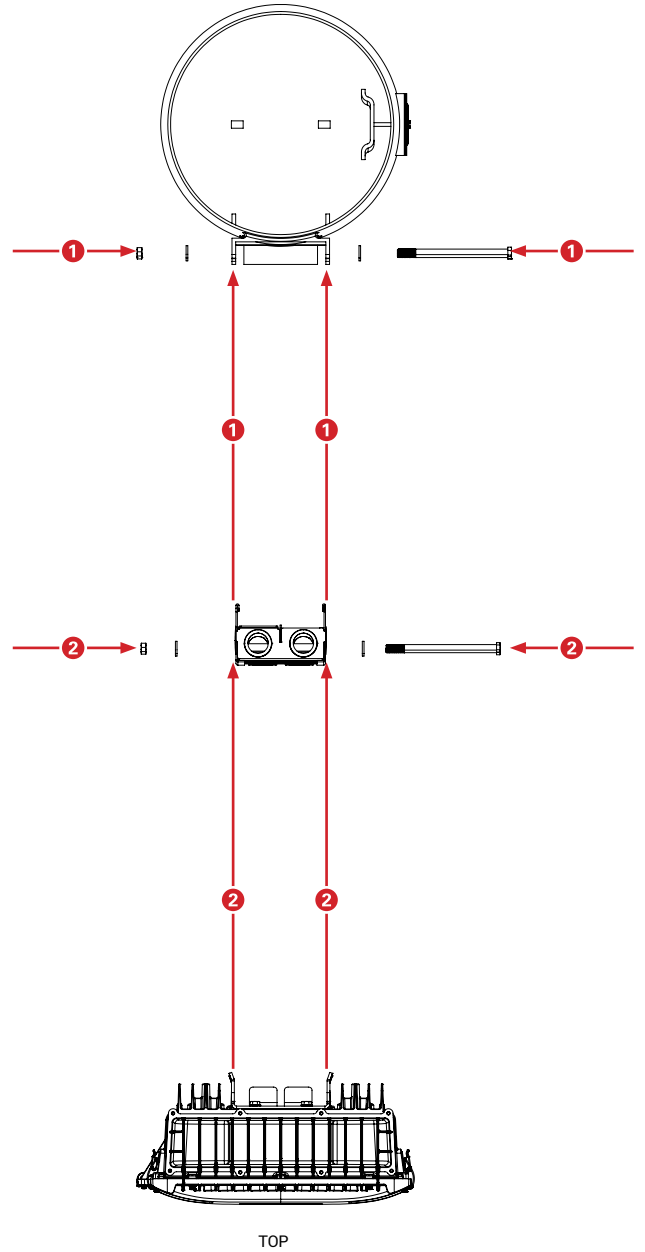
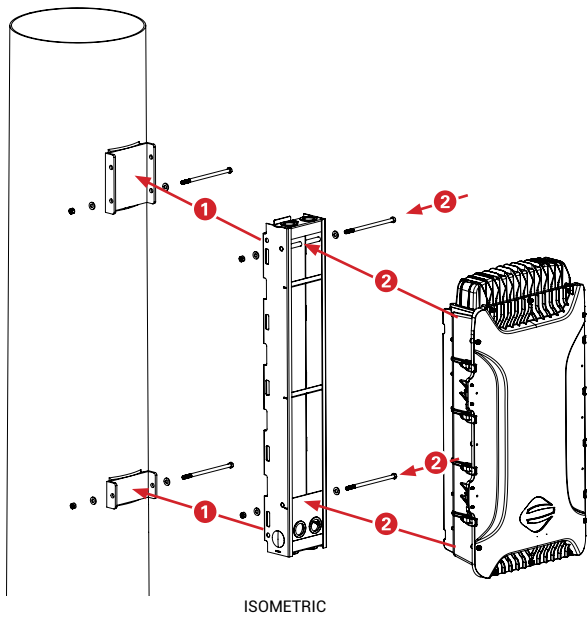
Mounting Rail Data	
Weight	10 lbs
Mounting Options	Pole New, Pole Retrofit, Wall Mount

* the mounting rail can be pole or wall mounted and is required to install the PAC Box

PAC BOX: POLE MOUNTING

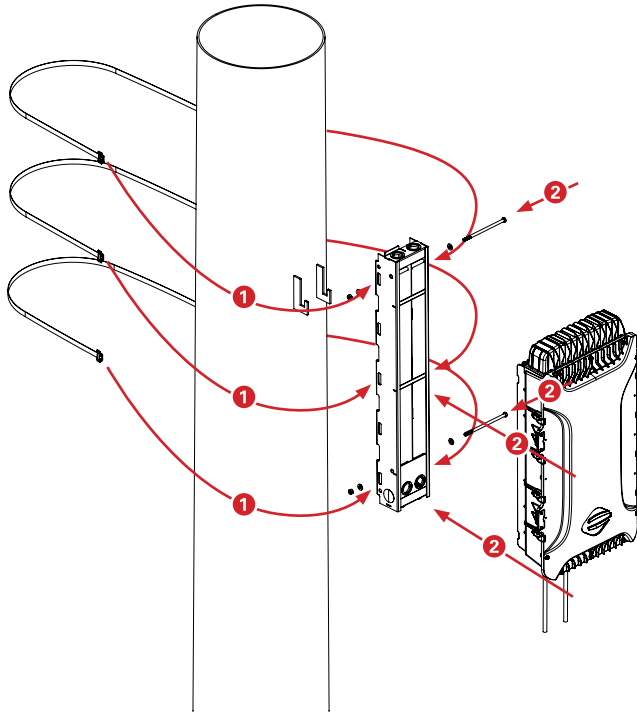
PAC Box: Attaching Mounting Rail With Bolting

NOTE: PAC Box AC & DC Cables are factory installed.

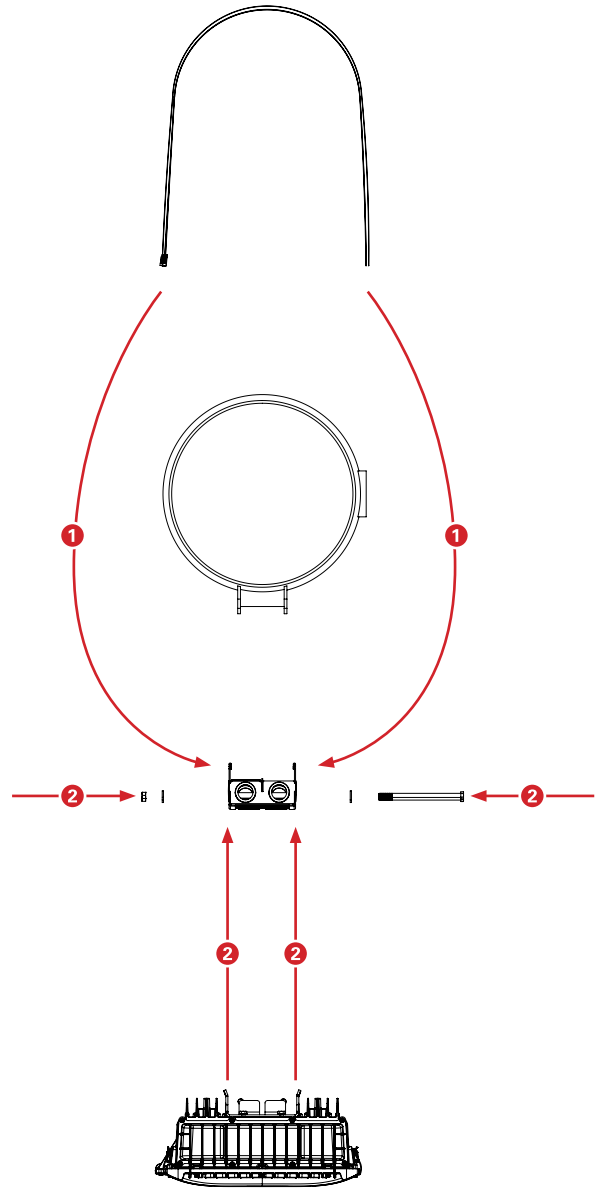


PAC Box: Attaching Mounting Rail with Banding

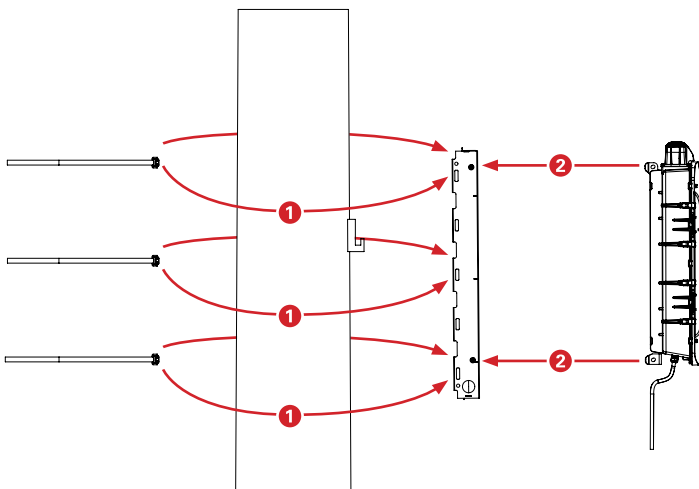
NOTE: PAC Box AC & DC Cables are factory installed.



ISOMETRIC

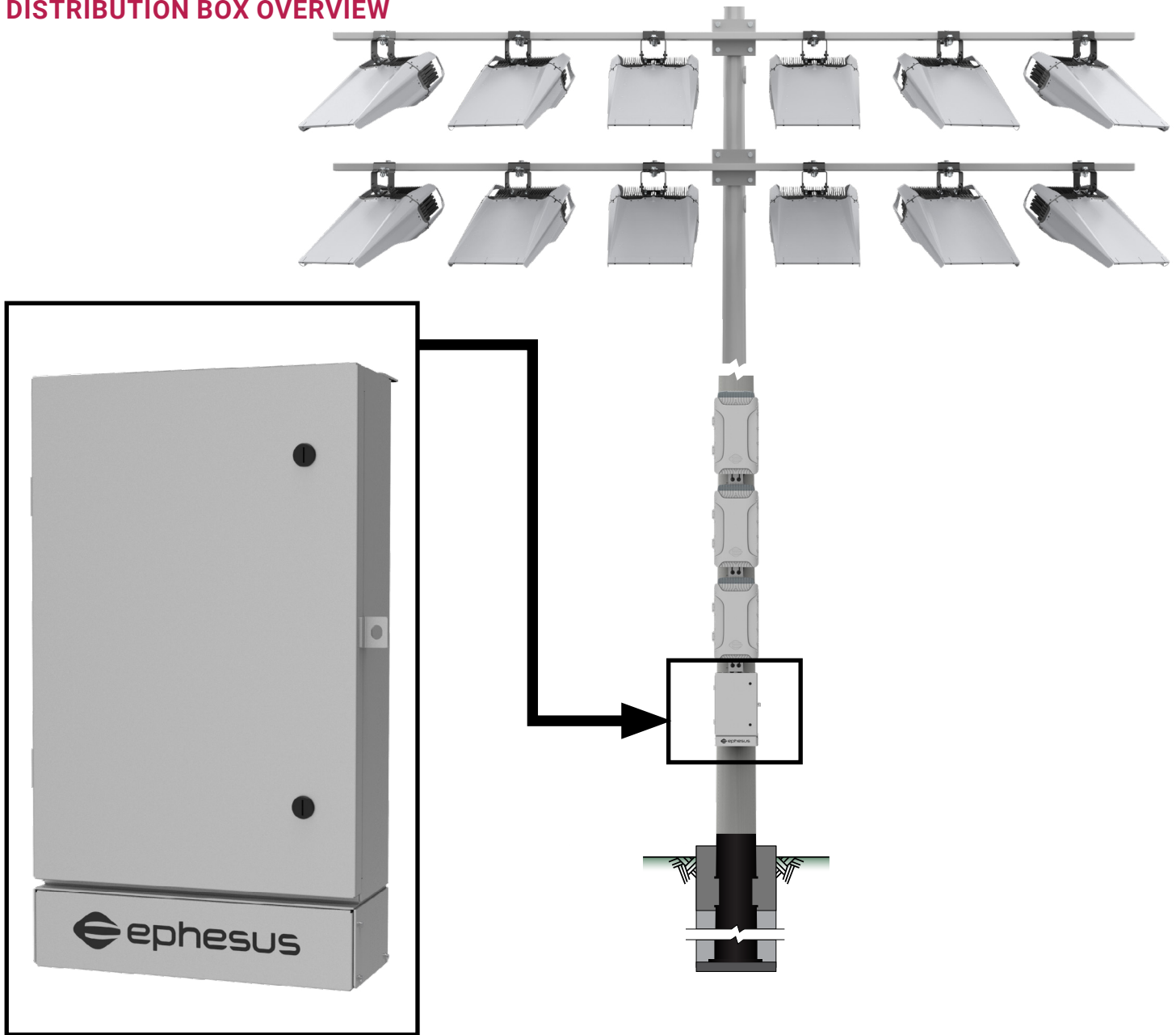


TOP



PROFILE

DISTRIBUTION BOX OVERVIEW



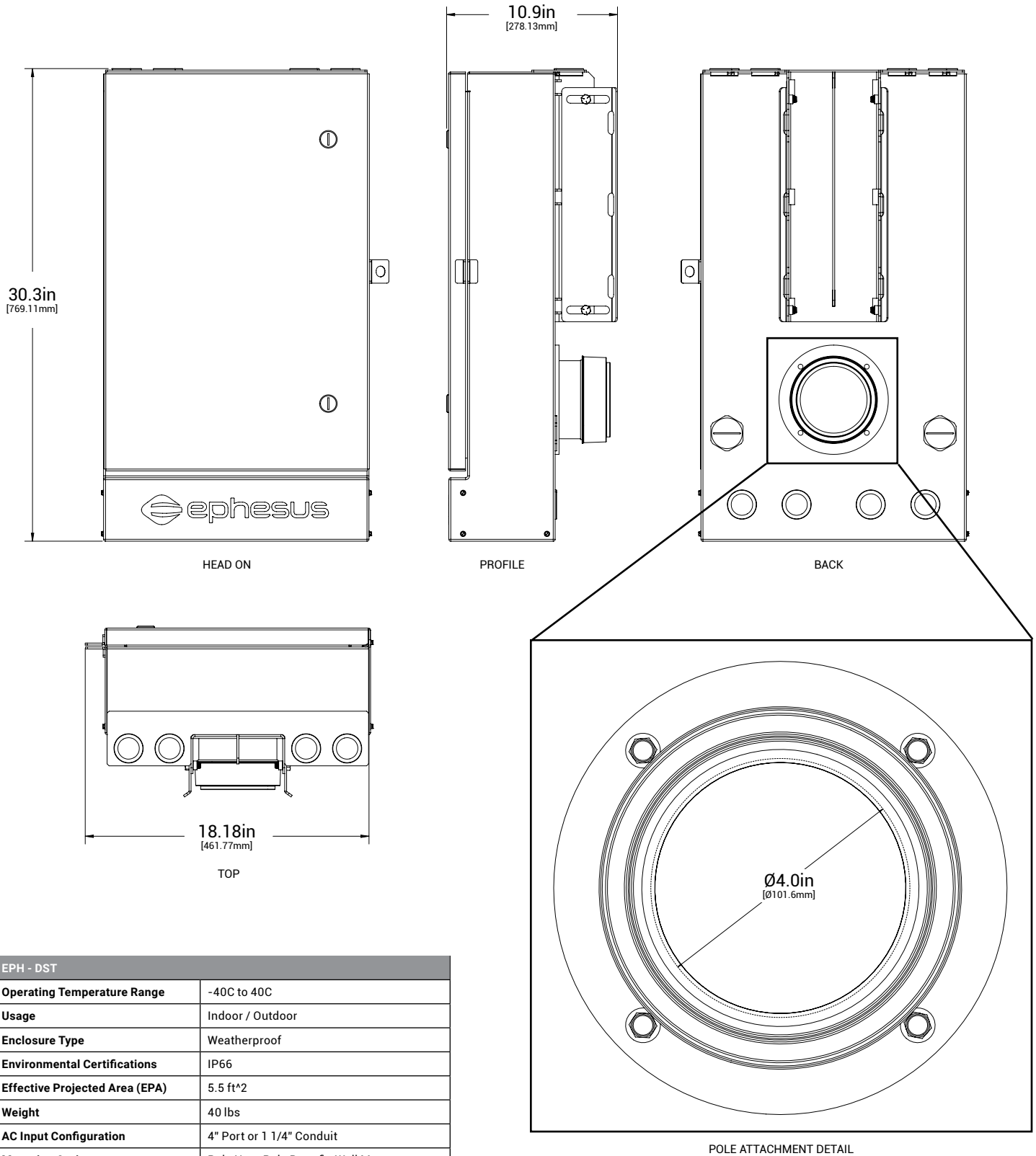
Distribution Box Electrical Specifications

Product	Input Voltage ¹	Phase	Max Input Current (A)	Maximum Surge Rating	Input Wire Gauge	Output Wire Gauge
EPH-DST-6PC	208 - 480 VAC	Single Phase or 3 Phase	95 A	50 kA	8-1/0 AWG	18-12AWG

Note:

- (1) Engineering Approval is required for using AC 277V or 347V single phase power supply to remote Distribution Box
- (2) Using a 277V AC line-to-neutral supply limits the number of PAC Boxes supported by a Distribution Box; the recommended maximum is five (5) PAC Boxes per Distribution Box for a 277V single-phase supply. Consult Ephesus if you plan to install this configuration.

DISTRIBUTION BOX: DIMENSIONAL DETAILS

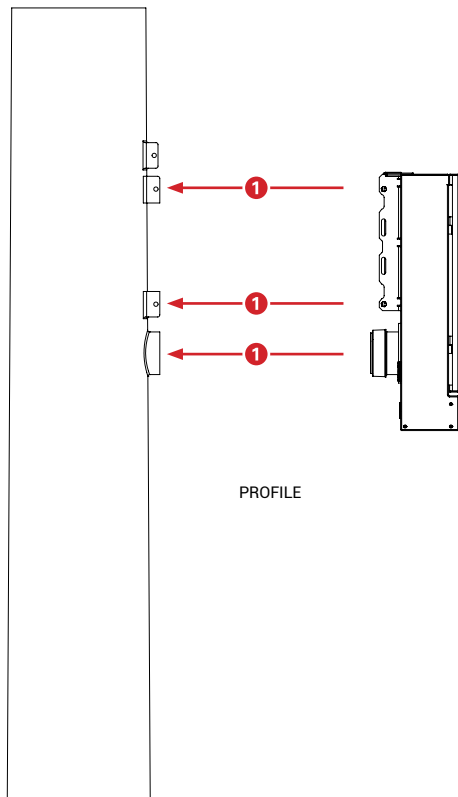
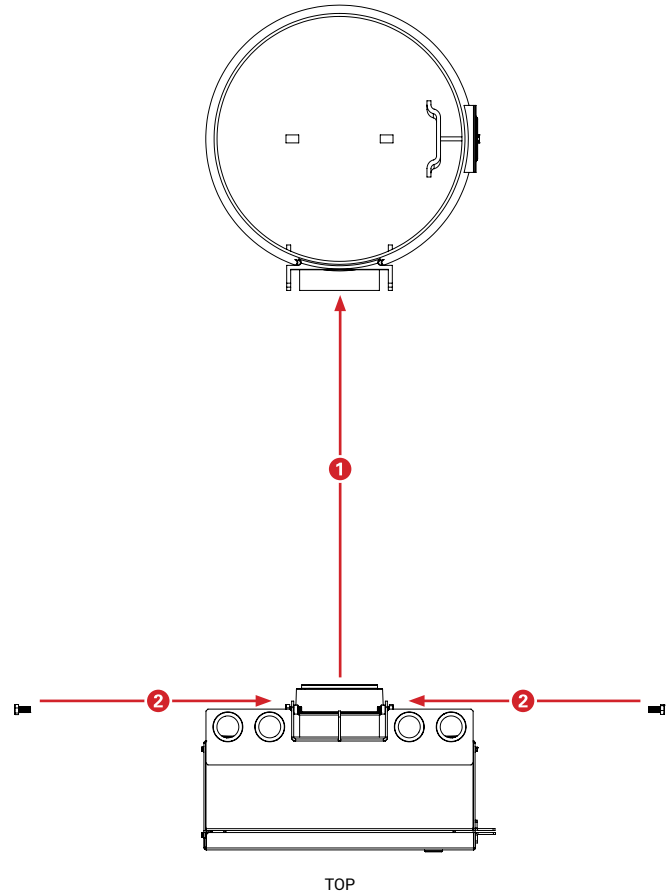
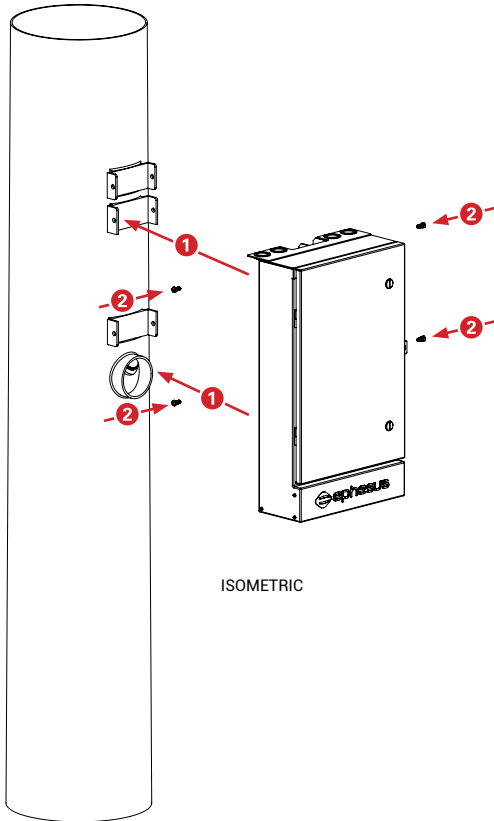


EPH - DST	
Operating Temperature Range	-40C to 40C
Usage	Indoor / Outdoor
Enclosure Type	Weatherproof
Environmental Certifications	IP66
Effective Projected Area (EPA)	5.5 ft²
Weight	40 lbs
AC Input Configuration	4" Port or 1 1/4" Conduit
Mounting Options	Pole New, Pole Retrofit, Wall Mount

DISTRIBUTION BOX: POLE MOUNTING

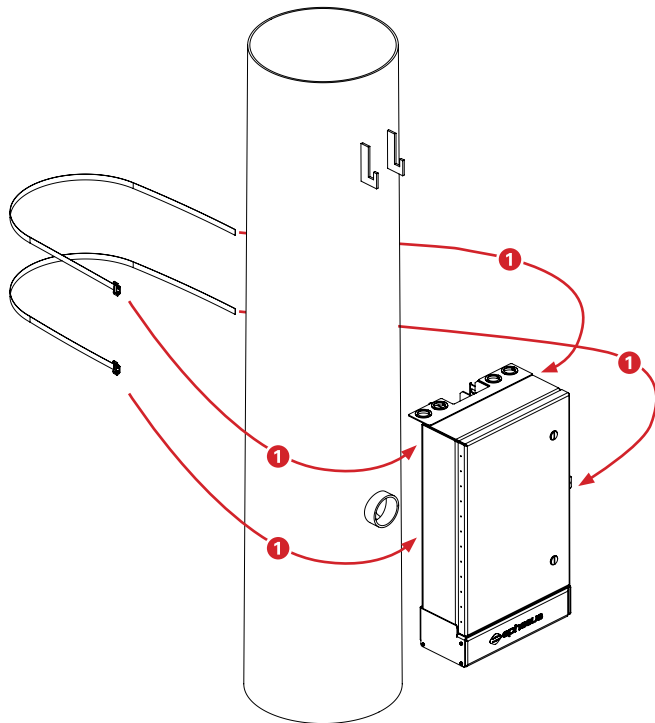
New Installation: Attaching Distribution Box

NOTE: Distribution Box to be installed prior to PAC Boxes.

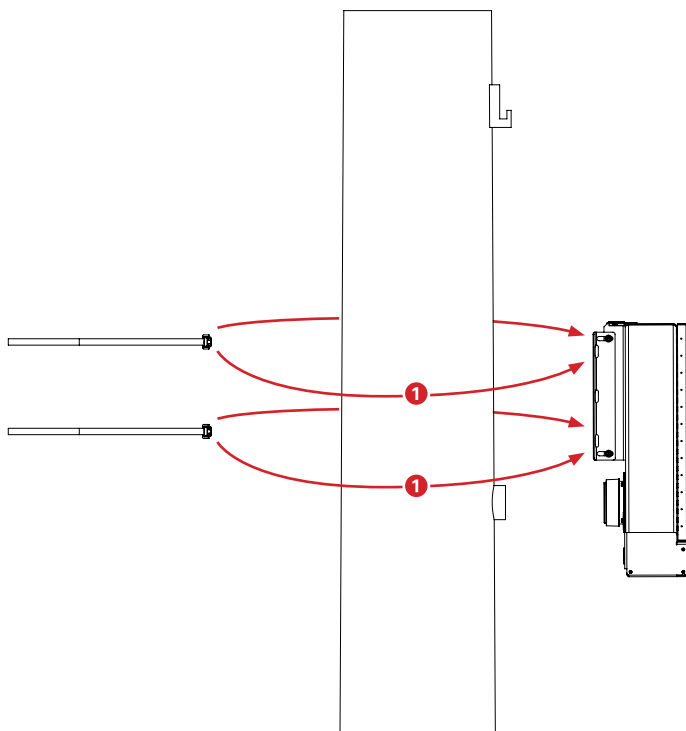


Retrofit Installation: Attaching Distribution Box with Banding

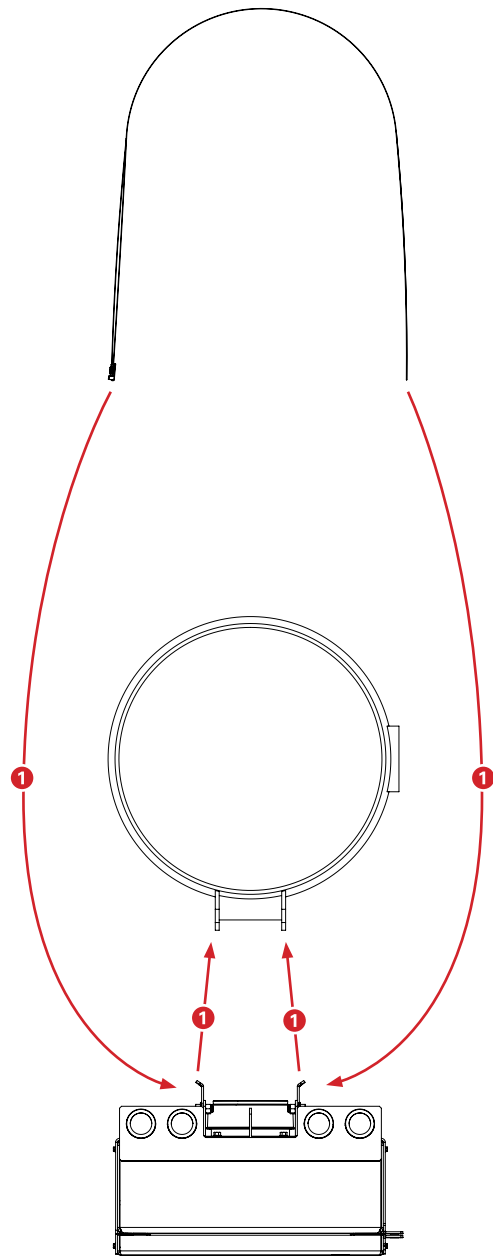
NOTE: Distribution Box to be installed prior to PAC Boxes. Distribution Box is designed to be located over or near pole wiring access.



ISOMETRIC

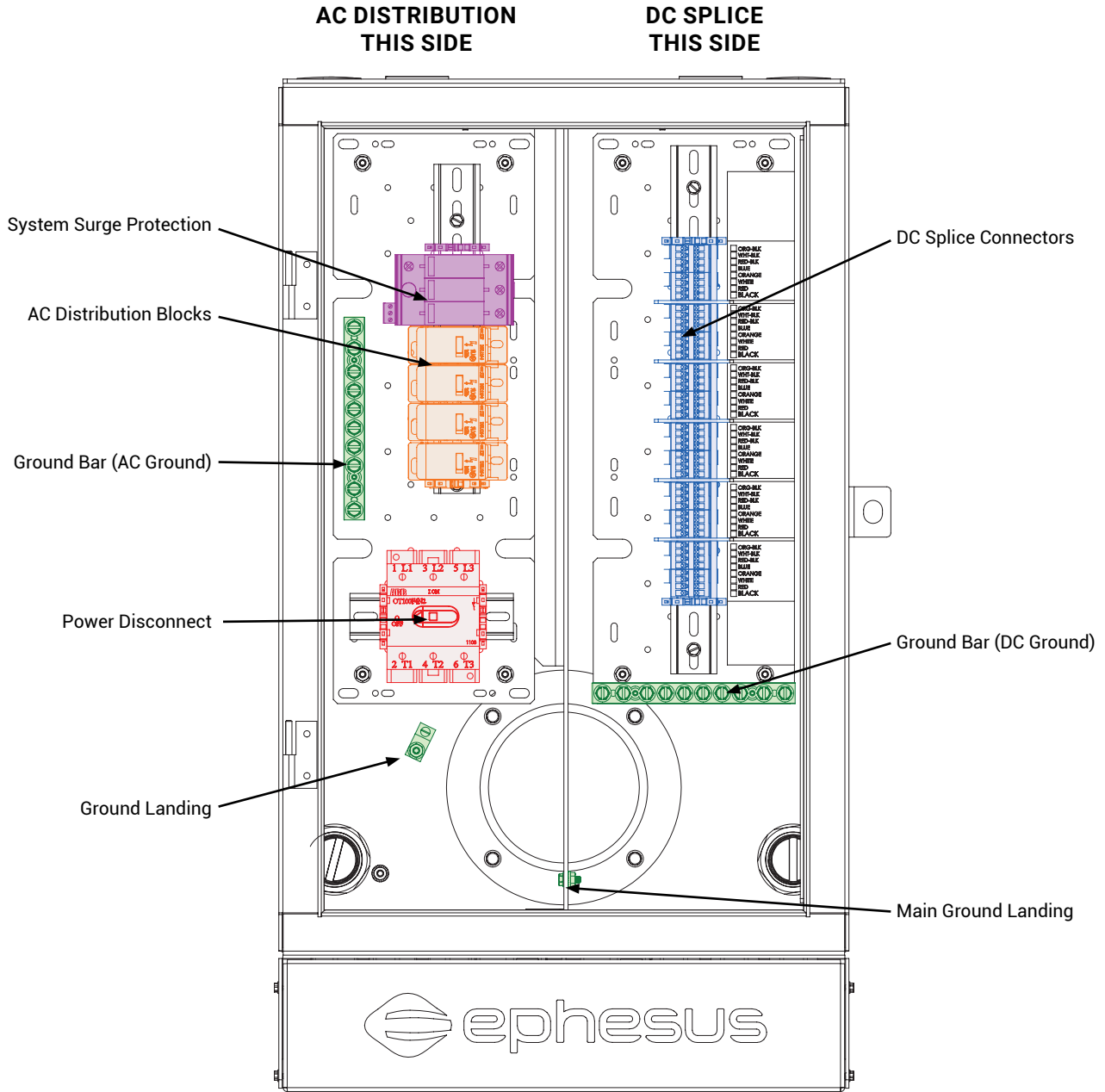


PROFILE



TOP

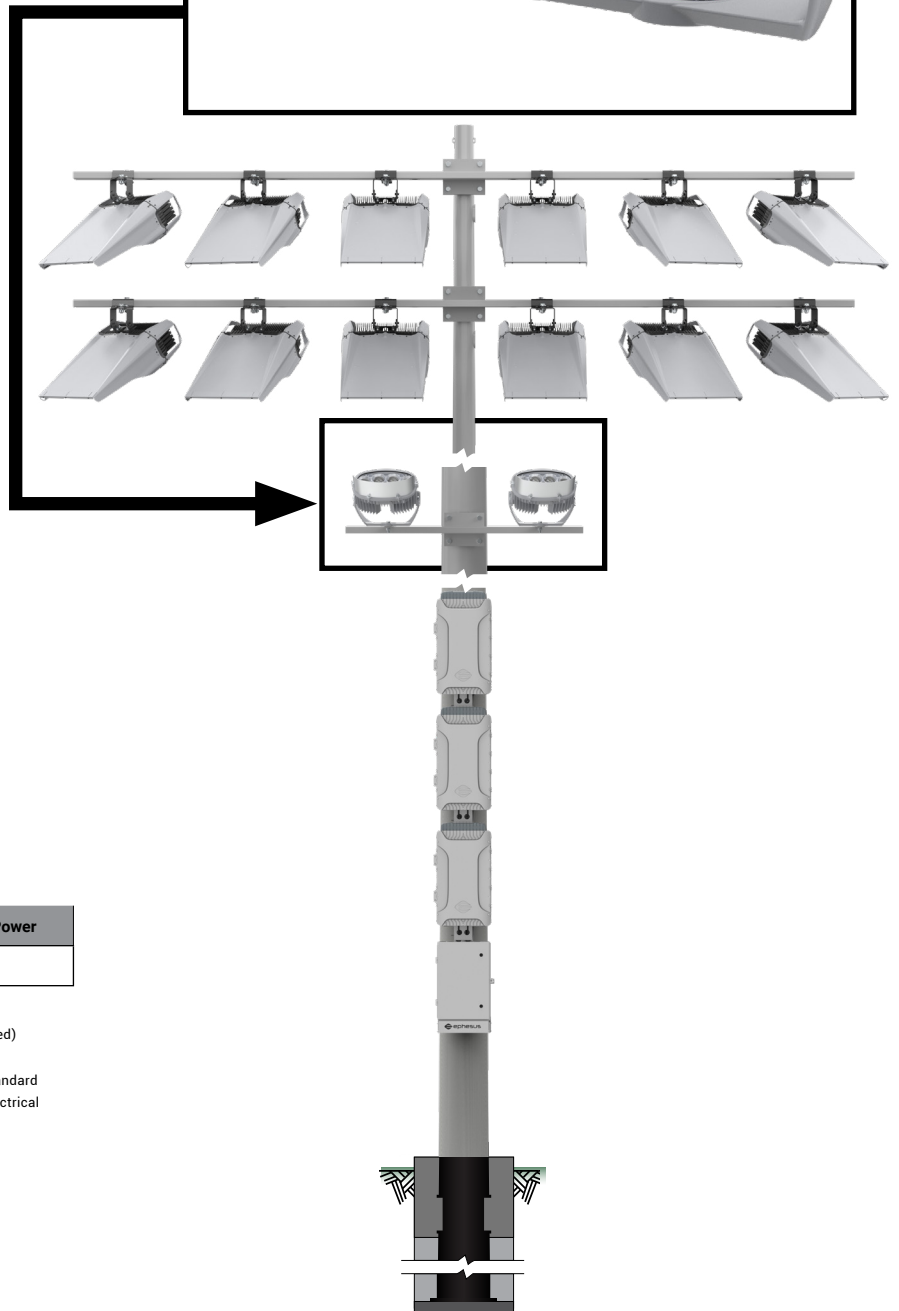
DISTRIBUTION BOX: ELECTRICAL DETAILS



LUMASPORT 8 PLAYMAKER UPLIGHT OVERVIEW

Performance Data¹

	LUMASPORT 8 PLAYMAKER (530W)
Lumen Output Range ²	78,000 - 90,000 lm
Nominal AC Power ²	552W
Efficacy Range	141 - 163lm/W
CRI ³	70, 80, 90
TLCI ⁴	75
CCT Range	4000K, 5700K
Distribution (NEMA) ⁵	NEMA 3 - 5
Dimming Range	DIM TO OFF, 10%-100%
Operating Temperature Range	-40°C to +40°C
Usage	INDOOR, OUTDOOR
Mounting Options (3G RATED)	TOP YOKE; QUICK CLAMP
Electrical Certifications	FCC, UL8750, UL1598
Environmental Certifications	IP66, NEMA4X ⁷
Vibration	ANSI136.10-2023
Effective Projected Area (EPA)	1.8 (sq. ft.)
Effective Projected Area (EPA) with Visor (VHB) ⁹	1.8 - 2.5 (sq. ft.)
Approximate Weight ¹⁰	Light Head 35 LBS Visor + 4LBS Remote Top Yoke + 6LBS Quick Clamp Yoke + 12LBS



NOTES:

- (1) Specifications are subject to change without notice.
- (2) Values are +/- 4% when fixture is operated at 25°C ambient
- (3) Values are +/- 2%
- (4) Values are +/- 3 points.
- (5) Optic = NEMA TYPE; BEAM ANGLE; FIELD ANGLE. Additional optical performance data within spec sheet.
- (6) Indoor use limited to input voltages 277-480V.
- (7) Light Head Enclosure meets NEMA4X Certification. Steel Yokes are excluded.
- (8) LumaSport 8 Playmaker Uplight with Quick Clamp or visors (VHB) qualifies for ANSI C136, 31-2010 1.5G
- (9) EPA may vary depending on the aiming angle of the fixture.
- (10) Weight may vary depending on mounting bracket, visor option, and light head configuration.

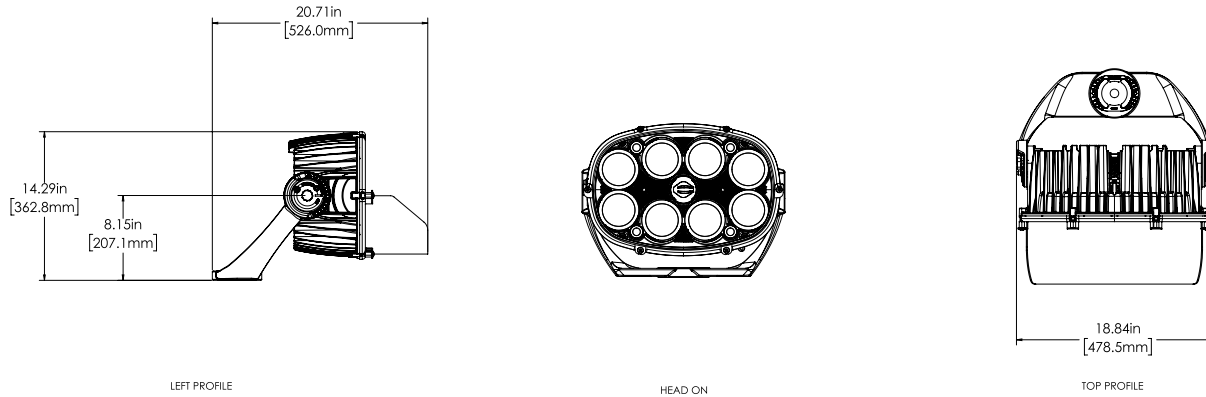
Light Head Electrical Specifications

Product	Total Drive Current	DC Voltage	Light Head Power
EPH-LS-08-PM08R	1.9 A	285 VDC	530 W

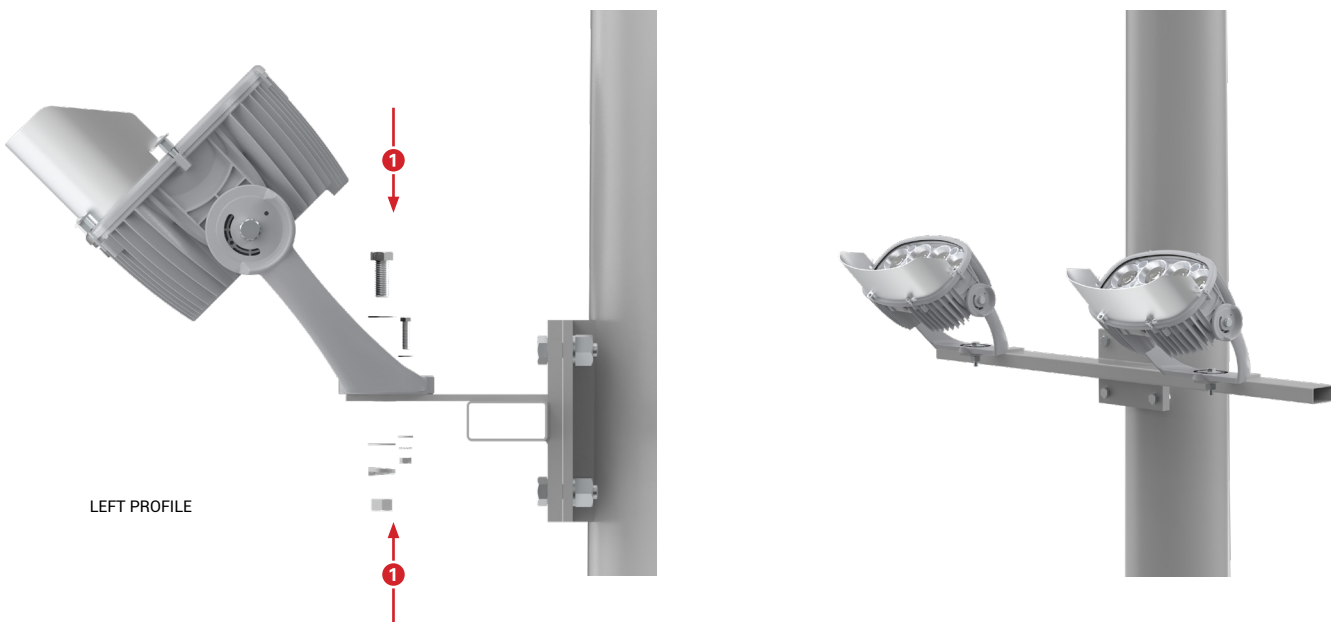
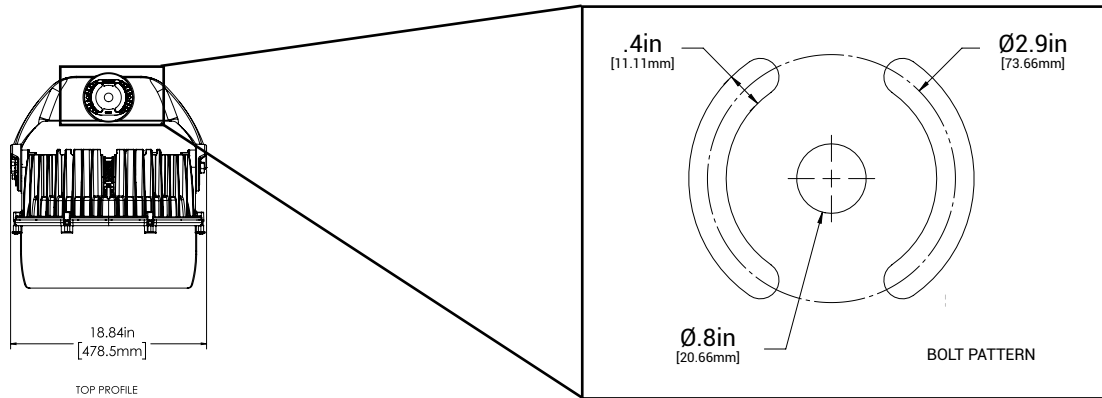
- Light Head cannot be powered independently from the PAC Box
- 14-12AWG, 600V wire required. Rated and installed per electrical standard (contractor supplied)
- 200ft Max separation from PAC Box
- Electrical System (Light Head, PAC Box, Distribution Box) must be grounded per electrical standard
- *This is the power to the Light Head - for system input power, see sheet 18 for the PAC Box electrical performance data

LUMASPORT 8 PLAYMAKER UPLIGHT DIMENSIONAL DETAILS

Light Head: TY = Top Yoke Dimensional Details

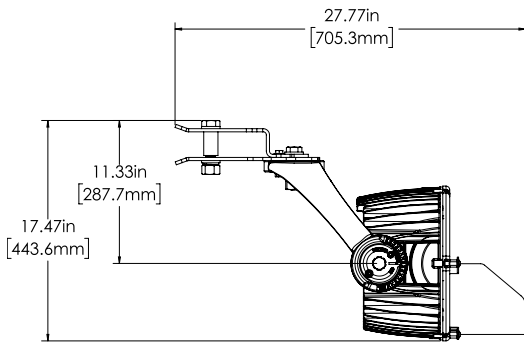


Light Head: TY = Top Yoke Mounting Attachment Method

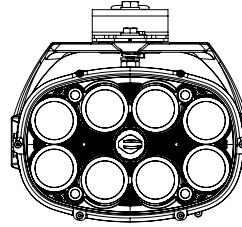


*Note: mounting hardware ordered separately for top mount yoke

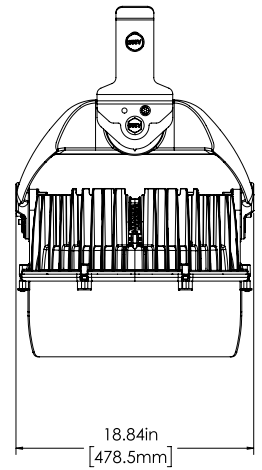
Light Head: QC = Quick Mount Dimensional Details



LEFT PROFILE



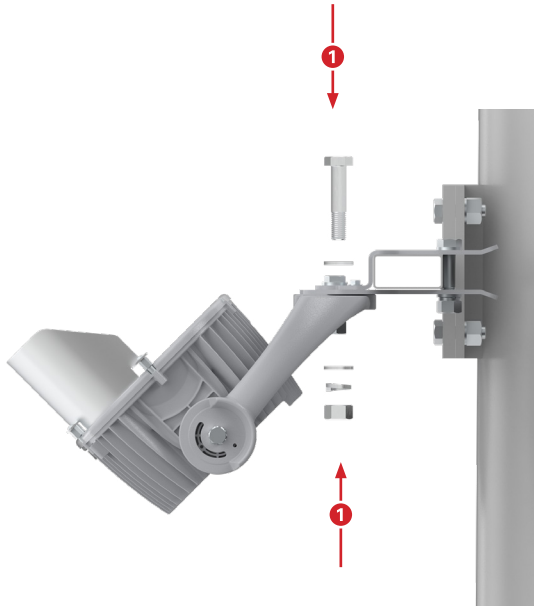
HEAD ON



TOP PROFILE

Light Head: QC = Quick Mount Attachment Method

NOTE: Quick Clamp is intended to be used to mount the light head to a 2 inch by 4 inch tubular crossarm.



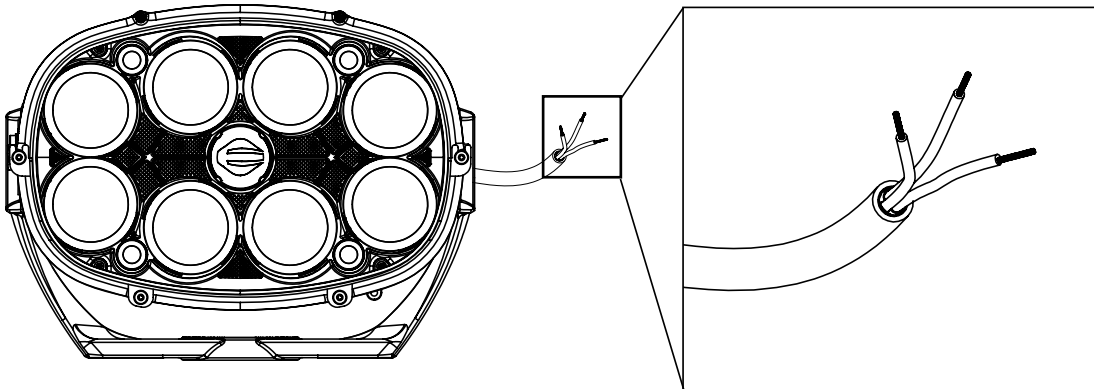
RIGHT PROFILE



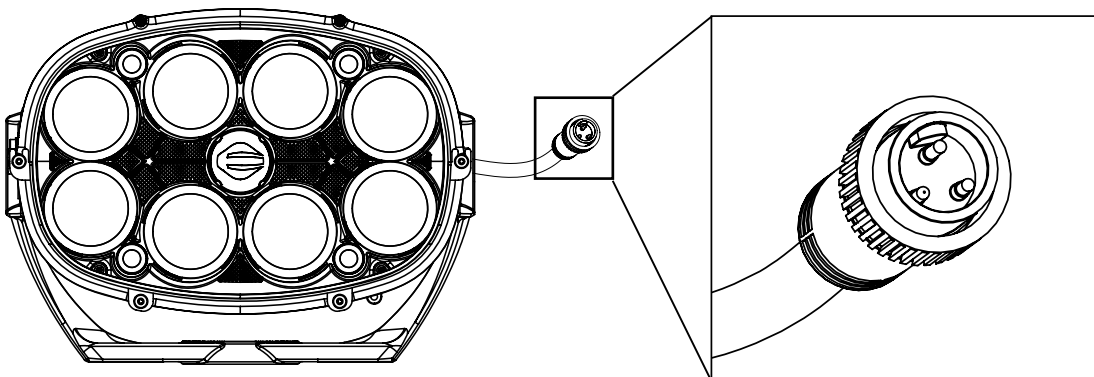
*Note: Mounting hardware included with quick clamp

LUMASPORT 8 PLAYMAKER UPLIGHT ELECTRICAL ATTACHMENT METHODS

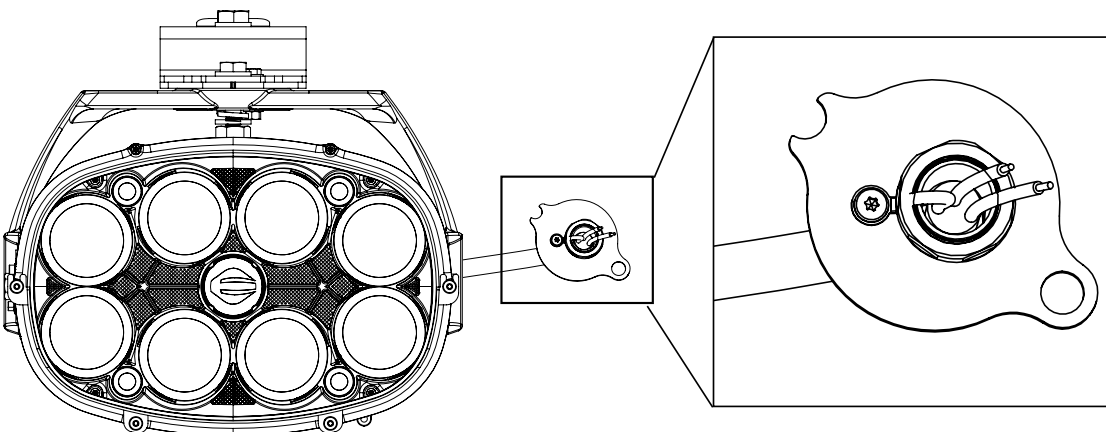
C10 = 10 foot Cable Details



BH3 = 3 foot, 3 Pin Electrical Connector Details



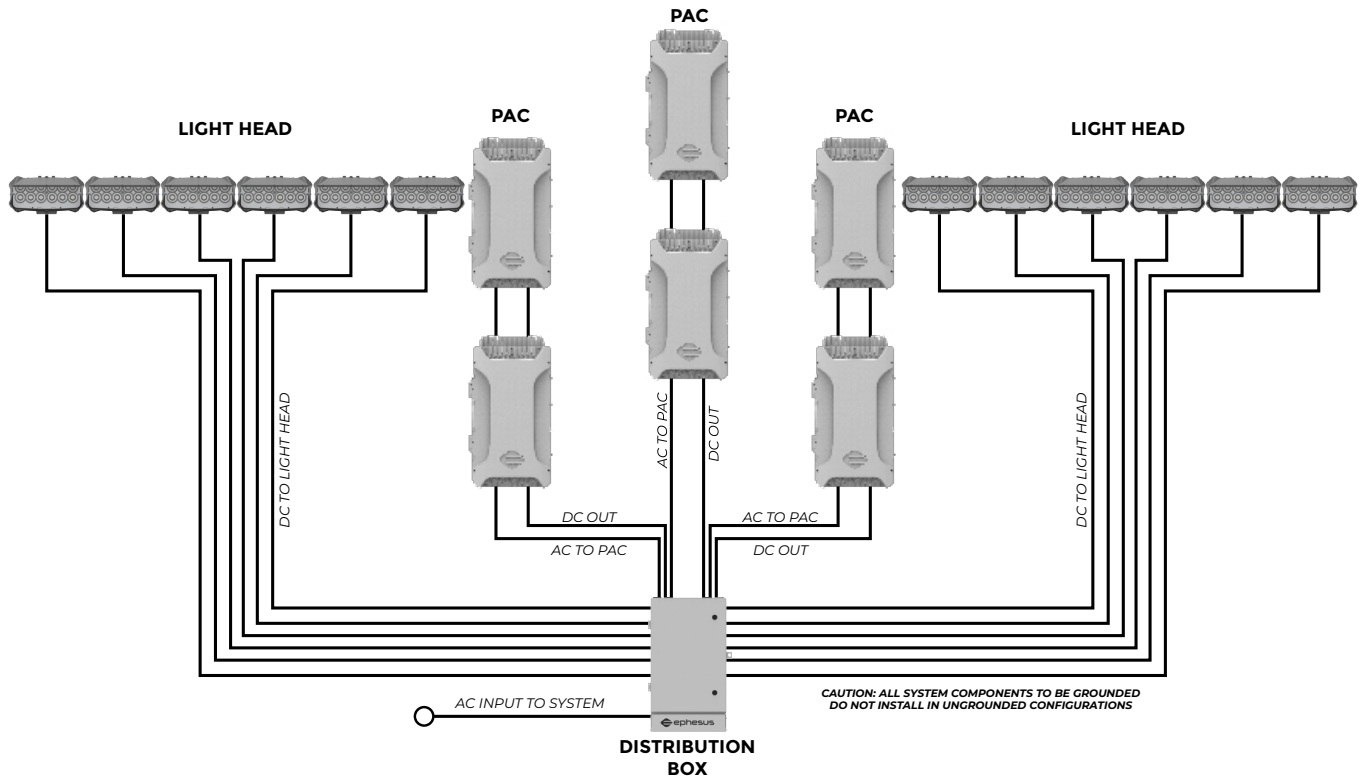
RAC = 3 Foot, Retrofit Adapter Cable Electrical Connector Details



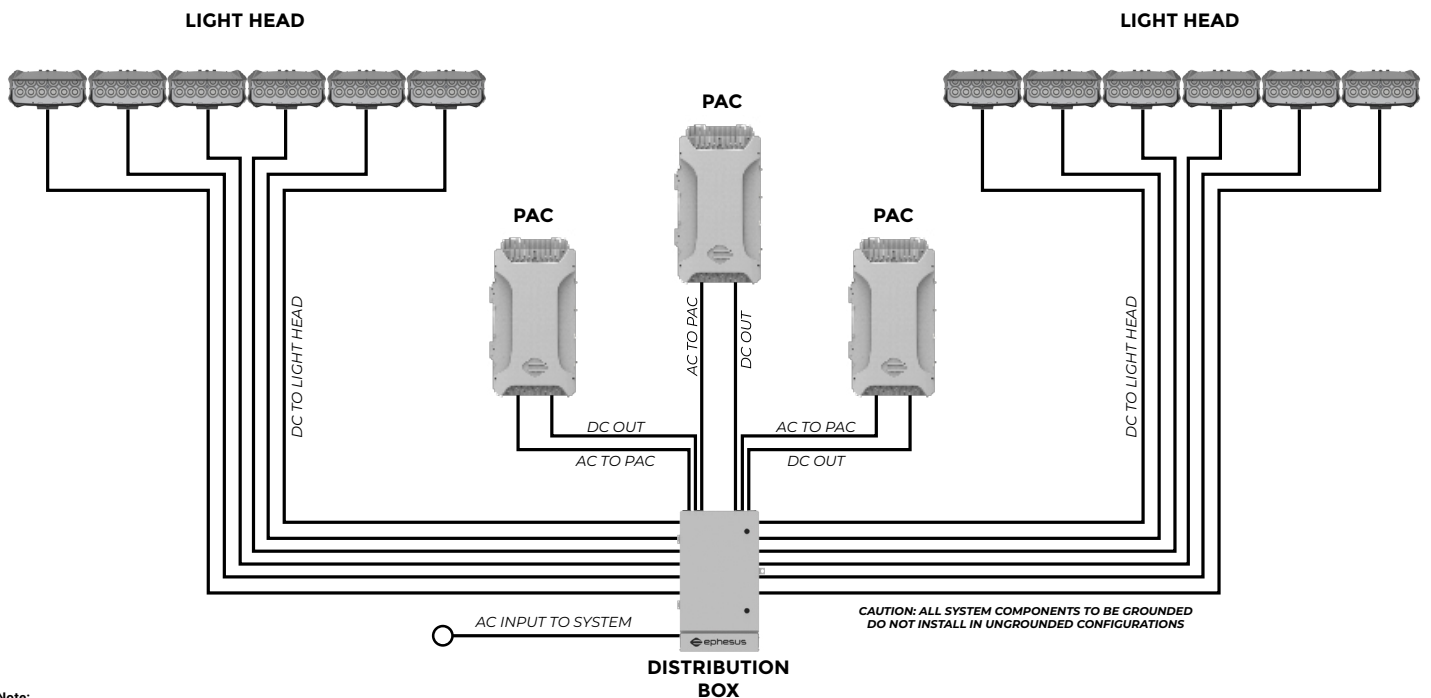
***Note: electrical splice connectors not included.
Refer to install manual for connector requirements.**

EXAMPLE ELECTRICAL SYSTEM CONFIGURATION

LOW VOLTAGE VARIANTS (208V AC, 240V AC)



HIGH VOLTAGE VARIANTS (277V AC, 347V AC, 480V AC)

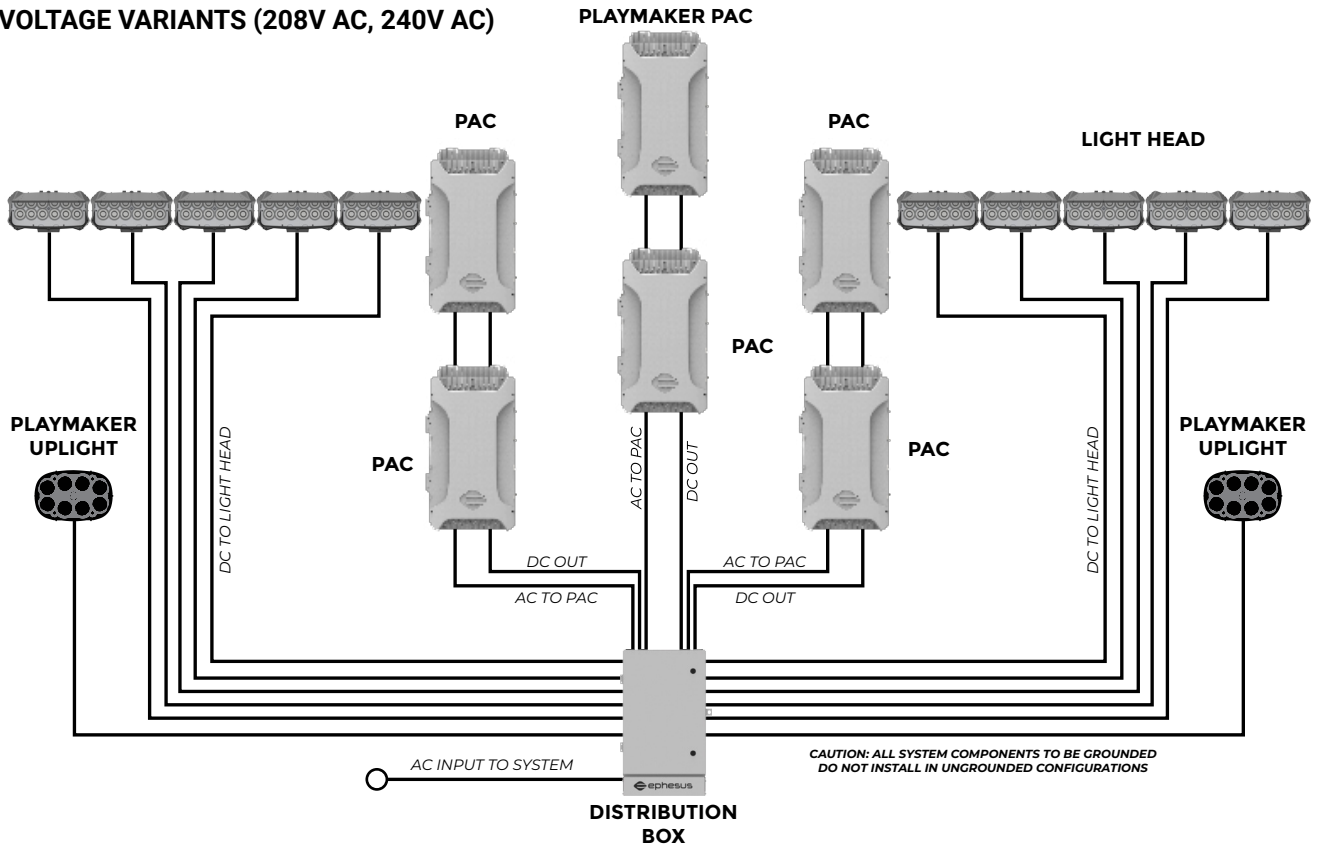


Note:

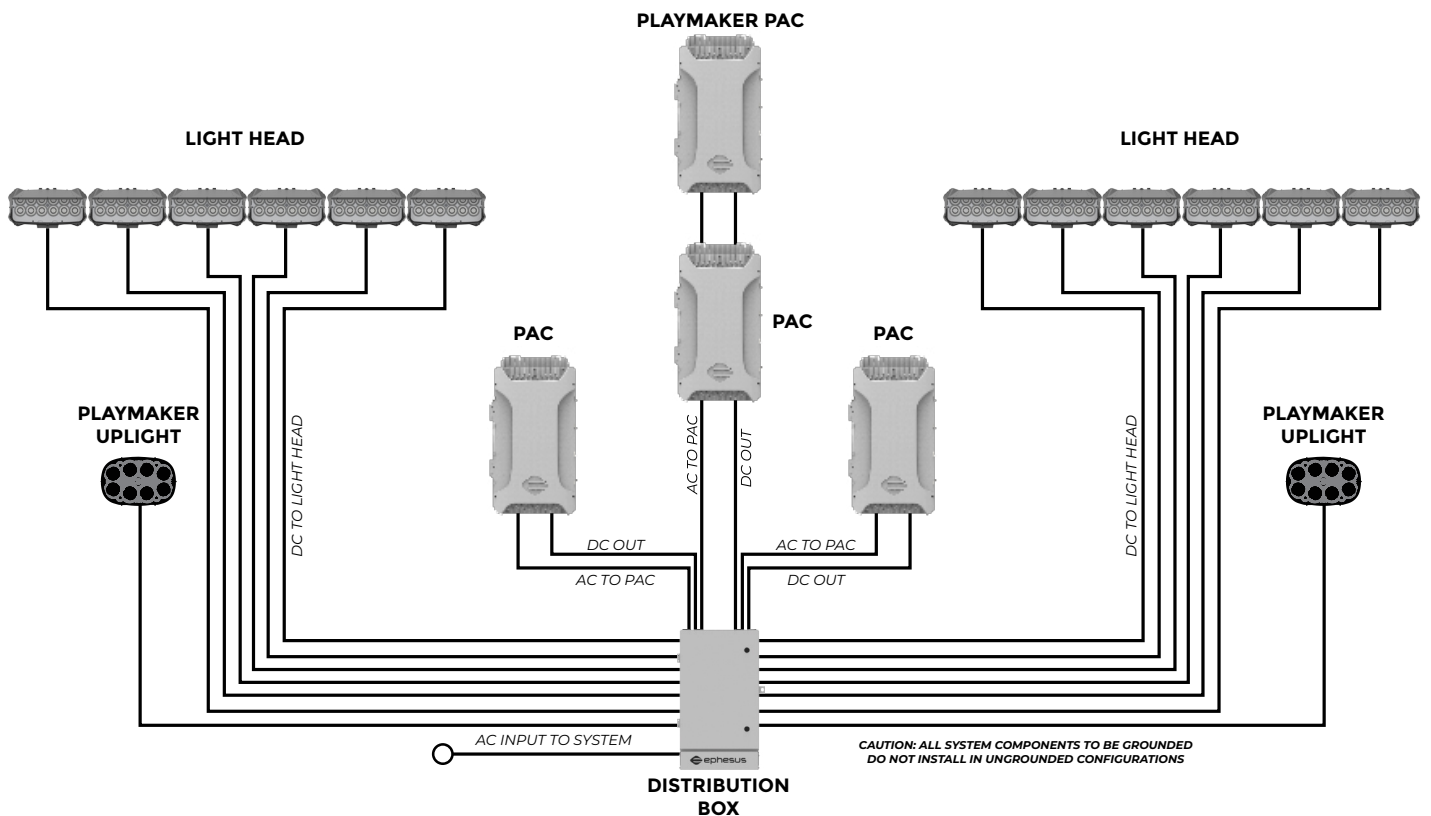
(1) Using a 277V AC line-to-neutral supply limits the number of PAC Boxes supported by a Distribution Box; the recommended maximum is five (5) PAC Boxes per Distribution Box for a 277V single-phase supply. Consult Ephesus if you plan to install this configuration.

EXAMPLE ELECTRICAL SYSTEM CONFIGURATION WITH UPLIGHTING

LOW VOLTAGE VARIANTS (208V AC, 240V AC)



HIGH VOLTAGE VARIANTS (277V AC, 347V AC, 480V AC)



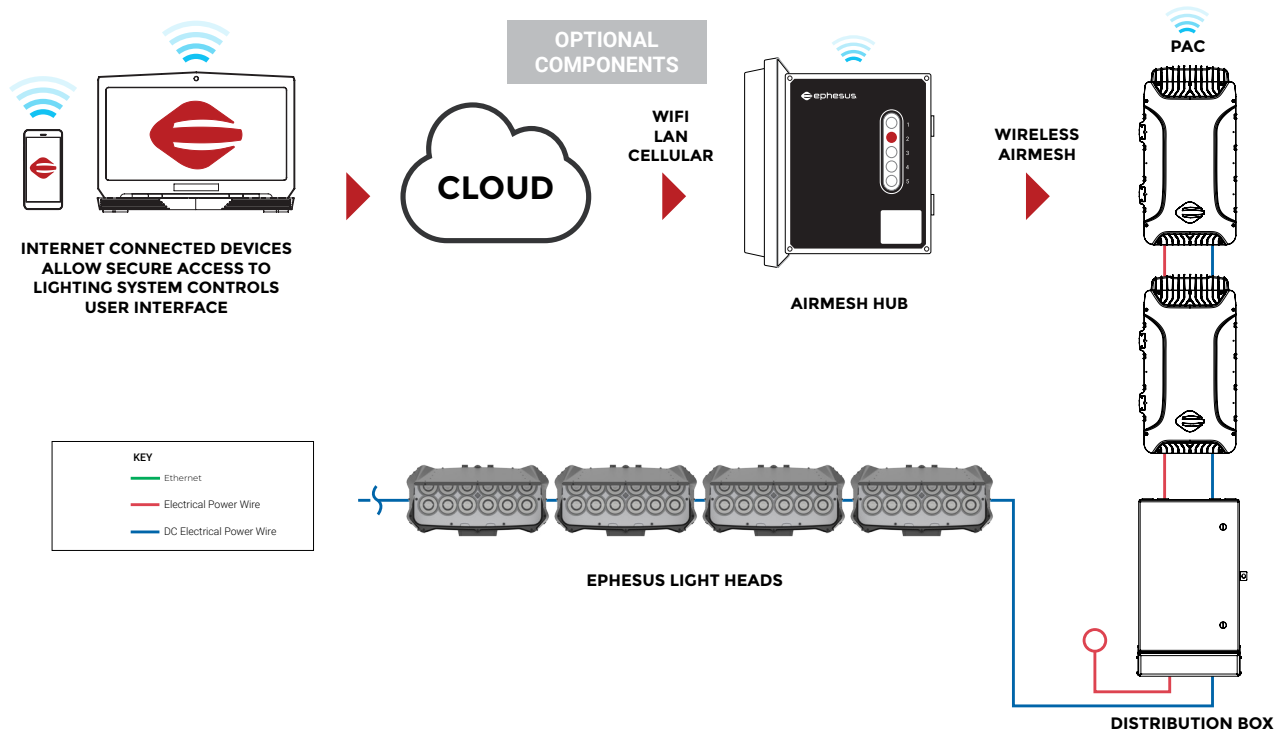
NOTE: Using a 277V AC line-to-neutral supply limits the number of PAC Boxes supported by a Distribution Box; the recommended maximum is five (5) PAC Boxes per Distribution Box for a 277V single-phase supply. Consult Ephesus if you plan to install this configuration.

EXAMPLE SYSTEM TOPOLOGIES

Wireless AirMesh Controls

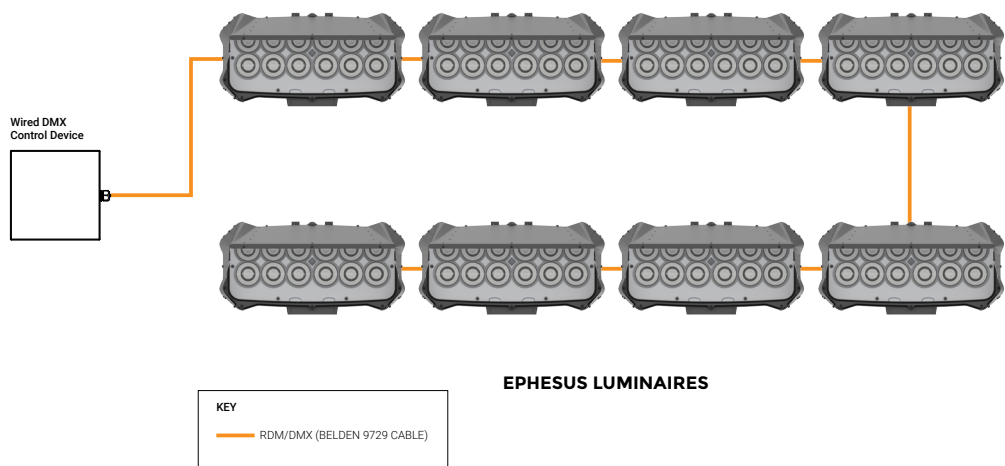
Example system topology showing the LUMASPORT 12 System in a Wireless AirMesh Control Installation.

NOTE: Laptop and mobile device not included. A cellular network connection requires a cellular carrier network plan.



Wired DMX Controls

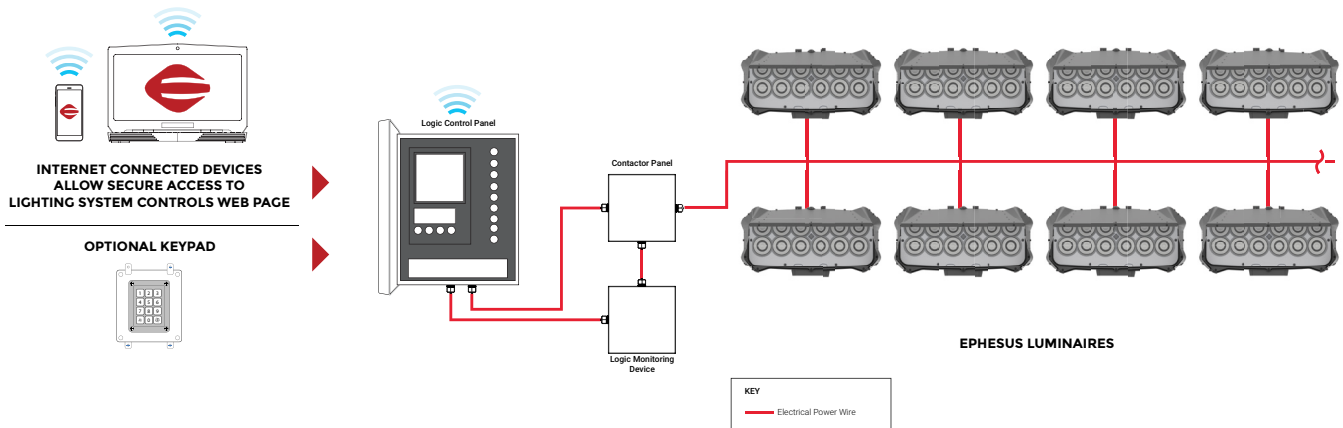
Example system topology showing the LUMASPORT 12 System in a commonly used wired DMX Control Installation. Refer to the specifications and limitations of your wired DMX control device before installing this configuration.



Contactor Controls

Example system topology showing the LUMASPORT 12 System in a Wired Contactor Controls Installation.

NOTE: Laptop and mobile device not included. A cellular network connection requires a cellular carrier network plan.



Remote Access Point With Wired DMX Controls

Example system topology showing the LUMASPORT 12 System in a commonly used remote access point with wired DMX Control Installation. Refer to the specifications and limitations of your wired DMX control device before installing this configuration. Note: Laptop and mobile device not included. A cellular network connection requires a cellular carrier network plan.

NOTE: Remote Access Point requires either a wired Internet connection at the lighting system site or through a cellular carrier network connection plan.

REMOTE ACCESS POINT TO DMX SYSTEM CONTROLS

