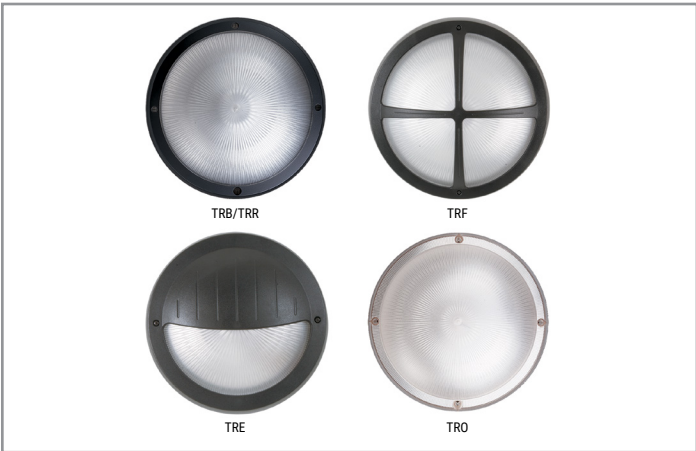


Project		Catalog #		Type	
Prepared by		Notes		Date	



# Fail-Safe

## TR15

15" Round Terrapin LED High Abuse  
Polycarbonate  
Lens Lifetime Warranty Up to 4875 Lumens  
Ceiling / Wall

### Typical Applications

Cleanroom • Pharmaceuticals • Vivariums • Hosedown • Food Prep • Healthcare • Vandal Resistant

### Interactive Menu

- Order Information page 2
- Max Ambient Operating/Option Matrix page 2
- Design Gallery page 3
- Product Warranty

### Top Product Features

- Available from 10 to 25 watts
- IP65 Rated
- UL wet location listed
- Opal and clear polycarbonate lens
- Up to 4,875 delivered lumens
- Open lens or choose from 4 face plates
- Emergency driver option
- Photocontrol and occupancy sensor available
- Shallow casting optional for surface conduit

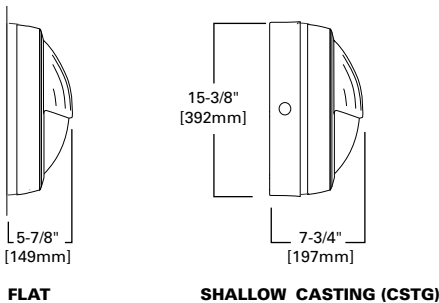
### Product Certification



### Product features



### Dimensional and Mounting Details



### Delivered Lumens

Wattage		TR015	TRB15	TRR15	TRF15	TRE15
20	Clear	2945	2460	2585	2340	1245
	Opal	1595	1070	1125	1020	545
30	Clear	3930	3300	3465	3135	1665
	Opal	2125	1425	1500	1355	725
40	Clear	4875	4060	4265	3860	2045
	Opal	2640	1760	1850	1670	865
		Open	Border	Ring	Four Quadrant	Eyelid

**Note:** Refer to LM-79 data for exact lumen output, input wattage and distribution.

## Order Information

SAMPLE ORDER NUMBER: TRF15-LD4-20W-40-OPL-BZ-UNV-EDC1-EL12W/CSTG

Domestic Preferences	Product Family	Shape	Style	Size	LED	Wattage	Color Temp	Lens
Domestic Preferences <sup>(1)</sup>	Product Family	Shape	Style	Size	LED	Wattage <sup>(12)</sup>	Color Temp	Lens
<b>[Blank]</b> =Standard <b>BAA</b> =Buy American Act <b>BABA</b> =Build America Buy America Act	T=Terrapin LED	R=Round	<b>B</b> =BorderPaint <sup>(2)</sup> <b>E</b> =Eyelid <sup>(2)</sup> <b>F</b> =Four Quadrant <sup>(2)</sup> <b>R</b> =Ring <sup>(2)</sup> <b>O</b> =Open <sup>(2)</sup>	15=15 inch	LD4=LED 4.0	20W=20 Watt 30W=30 Watt 40W=40 Watt	30=3000K 35=3500K 40=4000K 50=5000K	OPL=Opal CL=Clear
<b>Notes</b> (1) Only product configurations with these prefixes are built to be compliant with the Buy American Act of 1933 (BAA) or the Build America Buy America Act (BABA). BABA is the minimum Government compliance requirement for the Build America Buy America standards which is part of the Infrastructure and Investment Jobs Act (IIJA). Individual Government Agencies may have more stringent compliance standards. Please refer to <a href="#">DOMESTIC PREFERENCES</a> website or consult the CLS Domestic Preferences team for more information. Components shipped separately may be separately analyzed under domestic preference requirements.			<b>Notes</b> (2) Color must be specified.			<b>Notes</b> (12) See table below for wattage construction/ options.		

Color	Voltage	Driver	Circuits	Options	Accessories
Color <sup>(3), (4)</sup>	Voltage	Driver	Circuits	Options <sup>(5)</sup>	Accessories <sup>(11)</sup>
<b>BK</b> =Black <b>WH</b> =Whiter <b>BZ</b> =Bronze <b>DP</b> =Dark Platinum	<b>UNV</b> =Universal Voltage 120V=120 Volt 277V=277 Volt	ED=Electronic Driver	<b>C1</b> =Single Circuit, Low Voltage Leads not connected <b>D1</b> =D1=Single Circuit, Low Voltage Dimming Leads connected to driver and presented at supply	<b>F1</b> =Fuse (specify voltage) <b>CSTG</b> =Shallow Casting - Same as SCB15, but ships with fixture <sup>(6), (7)</sup> <b>PB120V/CSTG</b> =Photocell, 120V, (Shallow Casting Necessary) <sup>(6), (10)</sup> <b>PB277V/CSTG</b> =Photocell, 277V, (Shallow Casting Necessary) <sup>(6), (10)</sup> <b>OS</b> =Occupancy Sensor, Internal (behind lens), FM105 <sup>(13), (8)</sup> <b>EL12W/CSTG</b> =Emergency Battery Pack, 12W (Shallow Casting Necessary), 30, 40 watt limited to max. 25°C ambient environment <sup>(8), (9)</sup>	<b>VRSD</b> =T20 Center-pin tamper-proof TORX®-head screwdriver
<b>Notes</b> (3) Custom colors available. Furnish RAL # or paint manufacturer/model #. (4) Open lens/style does not require a color to be specified, unless used with a shallow casting (CSTG, PB120/CSTG, PB277/CSTG, EL5W/CSTG).				<b>Notes</b> (5) See Maximum Ambient Operating/Option Matrix below for option capability and wattage/ambient restrictions. (6) When CSTG, PB120/CSTG, PB277/CSTG, EL5W/CSTG is specified, a color must be specified. (7) CSTG has four threadless hubs suitable for 1/2" conduit (plugged). (8) 30 and 40 watt limited to max. 25°C ambient environment. (9) OS only functional with 120 or 277. (10) PB120V/CSTG requires 120V to be specified as fixture voltage, and PB277V/CSTG requires 277V to be specified as fixture voltage. (13) 25C maximum ambient for 40W.	<b>Notes</b> (11) Accessories sold separately will be separately analyzed under domestic preference requirements. Consult factory for further information.

## Maximum Ambient Operating / Option Matrix

	20W				30W				40W			
	Flat Mount		Shallow Cast		Flat Mount		Shallow Cast		Flat Mount		Shallow Cast	
	Ceiling	Wall	Ceiling	Wall	Ceiling	Wall	Ceiling	Wall	Ceiling	Wall	Ceiling	Wall
No options	40C	40C	40C	40C	40C	40C	40C	40C	40C	40C	40C	40C
Fuse	40C	40C	40C	40C	40C	40C	40C	40C	40C	40C	40C	40C
Photocell	n/a	n/a	40C	40C	n/a	n/a	40C	40C	n/a	n/a	35C	35C
Occ Sensor	40C	40C	40C	40C	25C	25C	25C	25C	25C	25C	25C	25C
Fuse & Photocell	n/a	n/a	40C	40C	n/a	n/a	40C	40C	n/a	n/a	35C	35C
Fuse & Occ Sensor	40C	40C	40C	40C	25C	25C	25C	25C	25C	25C	25C	25C
EM	n/a	n/a	40C	40C	n/a	n/a	25C	25C	n/a	n/a	25C	25C
EM & Fuse	n/a	n/a	40C	40C	n/a	n/a	25C	25C	n/a	n/a	25C	25C
EM & Fuse & Photocell	n/a	n/a	40C	40C	n/a	n/a	25C	25C	n/a	n/a	25C	25C
EM & Fuse & Occ Sensor	n/a	n/a	40C	40C	n/a	n/a	25C	25C	n/a	n/a	25C	25C
EM & Photocell	n/a	n/a	40C	40C	n/a	n/a	25C	25C	n/a	n/a	25C	25C
EM & Occ Sensor	n/a	n/a	40C	40C	n/a	n/a	25C	25C	n/a	n/a	25C	25C

n/a=Not Available

## Description

The 15" diameter round Terrapin provides exceptional aesthetics with impressive strength and is available in 20, 30 or 40 watt lumen packages. Polycarbonate lens, clear or opal, combined with four face plates provides a choice of different styles. Choose a photo control or motion sensor for control. Choose an emergency battery pack to provide egress illumination.

## Product Specifications

### Housing

- Shallow casting is die-cast aluminum.
- Backplate constructed of 16 gauge aluminum.

### Face Plate Finish

- Injection-molded polycarbonate color is matte black standard, matte white painted, or bronze painted.
- Border paint option is a premium baked-on finish.
- For custom colors, provide manufacturer paint number, RAL number or color chip.

### Shallow Casting Finish

- Polyester powder-coat paint applied in a five-stage process, 2.0 mil thickness, and baked on at 400° F.
- Finish is TGIC, textured, thermoset, polyester powder-coat.

### Mounting

- Surface, ceiling or wall. Interior or exterior.

### Gasket

- Die-cut closed-cell silicone gasket seals lens to casting.
- Gasket is secured with adhesive, and locked in place to the back casting. When the casting is not required, the gasket is mechanically attached to the back plate. One gasket seals the fixture.

### Lens

- One-piece, injection-molded opal or clear polycarbonate, 0.125" thick.
- Attached with 4 recessed T20 stainless-steel TORX®-head fasteners.
- Lens Lifetime Warranty (see below for details).

### Decorative Faces

- Faceplate consists of high-impact, injection molded, 0.125" minimum thickness, polycarbonate overlay attached to lens with two recessed T20 stainless steel TORX®-head fasteners.
- Eyelid offers optimal lamp shielding.
- Open face is lens for continuous radial light pattern.
- Border face utilizes the standard open lens with paint on the border, eliminating backlit halo effect.

### Electrical

- LED driver is mounted to the backpan for optimal thermal management.
- High efficiency LED mounted to circuit board.
- 70% lumen maintenance at 50,000 hours when operated in an environment as noted on the Maximum Ambient Operating/Option Matrix on page 1.

### Labels

- UL/cUL listed for wet locations, ceiling or wall mount.
- IP65 rated.
- Available to mount on combustible or non-combustible surfaces.
- Options to meet Buy American Act requirements.

### BABA Domestic Preference Compliance

- This Cooper product is manufactured in the US and meets the BABA cost of components rule. To verify a configured product with specific accessories and options meets BABA Domestic Preference Requirements; submit this catalog number to Cooper Lighting Quotation team for validation by our Engineering and Manufacturing teams. Our BABA designation is based on the minimum compliance requirement for BABA. Individual Government Agencies may have more stringent compliance standards. Please refer to the [DOMESTIC PREFERENCES](#) website or consult the CLS Domestic Preferences team for more information. Components shipped separately may be separately analyzed under domestic preference requirements.

## Design Gallery



### Eyelid

Polycarbonate eyelid/cover attached to lens with tamper resistant screws



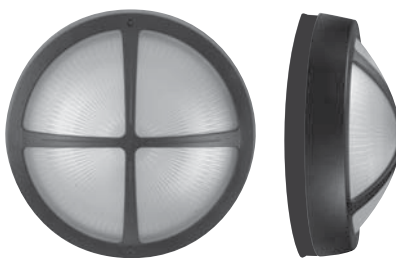
### Border (Painted Border)

Side and edge of lens painted, no front cover



### Ring

Polycarbonate ring attached to lens with tamper resistant screws



### Four Quadrant

Polycarbonate cover attached to lens with tamper resistant screws



### Open

Unpainted lens only. No polycarbonate front cover

## Lens Lifetime Warranty

Fail-Safe will repair or provide a replacement lens for any TR15 lens found to be inoperative due to physical abuse for the duration of the installation under normal conditions.

\*\* To make a claim, contact your Cooper Lighting Agent to arrange an RMA (Return Material Authorization) for the claimed product. Upon receipt and verification of the defect, Cooper Lighting will return to you a repaired or, at Cooper Lighting's sole option, replacement fixture.