

Project		Catalog #		Type	
Prepared by		Notes		Date	



# Fail-Safe HVSL2 | HVSL2-SQ

Vandal Resistant / High Abuse  
2" Nominal Width, Surface Mount  
Frosted Polycarbonate Lens

## Typical Applications

Stairwells • Schools • Hospitals • Corridors • Dormitories • Public restrooms •  
Common areas • Transit stations

## Interactive Menu

- Order Information page 2
- Product Specifications page 2
- Nominal Input Watts/Delivered Lumens page 3
- Product Warranty

## Product Certification



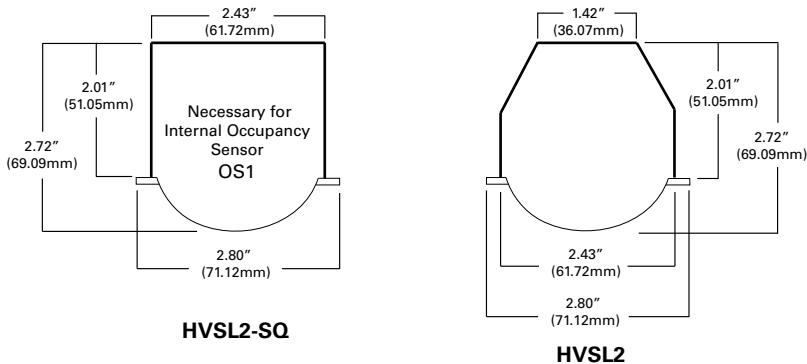
## Product Features



## Top Product Features

- Narrow 2.5" width for use when space is limited
- High impact polycarbonate lens
- Damp location standard, wet location optional
- Available in a variety of paint finishes
- Up to 4100 lumens in 4ft length
- Efficacy up to 106 lm/W
- Options to meet Buy American Act requirements
- 10-Day Quick Spec available

## Dimensional and Mounting Details



additional  
product diagrams

## Order Information

SAMPLE NUMBER: HVSL2-4-LD4-STD-40-UNV-O-EDC1

SAMPLE NUMBER: HVSL2-SQ-4-LD4-HI-40-277-O-EDC1-OS1

10-DAY QUICK SPEC SAMPLE NUMBER: QS-HVSL2-2-LD4-STD-35-UNV-O-EDC1

Gray bar denotes available with 10-Day Quick Spec

Domestic Preferences	Product Family	Length	LED Type	Illumination Level	Color Temperature	Voltage	Lens Type	Driver
<b>Domestic Preferences <sup>(1)</sup></b>	<b>Product Family</b>	<b>Length</b>	<b>LED Type</b>	<b>Illumination Level</b>	<b>Color Temperature</b>	<b>Voltage</b>	<b>Lens Type</b>	<b>Driver</b>
<b>[Blank]</b> =Standard <b>BAA</b> =Buy American Act	<b>HVSL2=2" Wide HVSL Linear Steel</b> <b>QS-HVSL2=2" Wide HVSL Linear Steel, Quick Spec <sup>(2)</sup></b> <b>HVSL2-SQ=2" Wide HVSL Linear Steel, straight side, (required for OS1 option)</b>	<b>2=2' Length <sup>(4)</sup></b> <b>3=3' Length</b> <b>4=4' Length</b> <b>8=8' Length <sup>(3)</sup></b>	<b>LD4=LED, Version 4.0</b>	<b>LO=Low</b> <b>STD=Standard</b> <b>HI=High</b>	<b>30=3000K Kelvin</b> <b>35=3500K Kelvin</b> <b>40=4000K Kelvin</b> <b>50=5000K Kelvin</b>	<b>UNV=120-277</b>	<b>O=Opal Polycarbonate</b>	<b>EDC1=Single Circuit, Non-Dimming</b> <b>EDD1=Single Circuit, 0-10V 10% Dimming <sup>(5)</sup></b> <b>ED1D1=Single Circuit, 0-10V 1% Dimming <sup>(5)</sup></b>
<b>Notes</b> (1) Only product configurations with this designated prefix are built to be compliant with the Buy American Act of 1933 (BAA). Please refer to <a href="#">DOMESTIC PREFERENCES</a> website for more information. Components shipped separately may be separately analyzed under domestic preference requirements.	(2) 10 day ship, from date of receipt of clean PO to ship date. 25 unit maximum per PO. QS option is only available with the shaded options. EL10W along with QS option is only available in 4' length.	(3) 8ft. unit consists of two (2) 4ft. housings joined together at the factory with single 8 ft. lens. (4) No center KO.						<b>Notes</b> (5) Purple and gray low voltage driver leads connected to driver for EDD1, ED1D1. Not connected for EDC1.

Options	Finish	Accessories (Order Separately)
<b>Options</b>	<b>Finish</b>	<b>Accessories (Order Separately) <sup>(11)</sup></b>
<b>EL10W</b> =10W Emergency Pack <sup>(6)</sup> <b>SF1</b> =TORX® T20 Tamper Proof side screws <b>SF3</b> =Allen-head center pin reject Tamper Proof side screws <b>SHP</b> =Stainless Steel Painted Housing <b>SHPA</b> =Stainless Steel Painted, all Fabricated Components <b>ALH</b> =Aluminum Painted Housing <b>ALHA</b> =Aluminum Painted, all Fabricated Components <b>GSKLNS</b> =Gasket to Lens - Side and Ends <sup>(8)</sup> <b>WL</b> =Wet Location Under Covered Ceiling <b>PMSC</b> =Pendant Mount, Stem/Canopy using standard knockouts in back of housing, (3', 4' & 8' length only) - damp location rated only, (no wet location) <sup>(7)</sup> <b>PMY</b> =Pendant Mount, AYC Chain or Y-Toggle, uses (4) 0.187" x 0.937" holes, (2) each end, (3', 4' & 8' length only) - damp location rated only, (no wet location) <sup>(7)</sup> <b>AM</b> =Anti-microbial matte white paint <b>FSS</b> =Flush side screws (secure lens, non tamper proof) <b>FSSTP</b> =Flush side screws (secure lens, tamper proof)	<b>Blank</b> =Matte White <b>BK</b> =Black <b>DP</b> =Dark Platinum <b>BZ</b> =Bronze  Customer must furnish RAL number for custom colors. Consult Technical Support for proper catalog logic.	<b>VRSD</b> =T20 Center Pin Tamperproof TORX®-head bit <b>SCF-XX-B</b> =Fixed Stem Set (see ordering information page 4) XX=Length (6, 8, 12, 24, 36, 48, 60, 72) Used with all surface fixtures as stem sets. One set consists of one stem assembly. Minimum of two sets required per fixture. Not rated WL under covered ceiling. <b>HVSL2-X-CM/BKT</b> =HVSL2 Corner Mount bracket, specify length (X=length=2, 3, 4, 8) <sup>(9)</sup> <b>HVSL2-X-WMAB45</b> =Wall Mount angle bracket, 45 degree, specify length (X=length=2, 3, 4, 8) <sup>(9)</sup> <b>HVSL2-CRNR/CONN</b> =Corner Connector, 90 degree. (not applicable to HVSL2-SQ) <sup>(9)</sup> <b>HVSL2-SQ-X-CM/BKT</b> =HVSL2 Corner Mount bracket, specify length (X=length=2, 3, 4, 8) <sup>(10)</sup> <b>HVSL2-SQ-X-WMAB45</b> =Wall Mount angle bracket, 45 degree, specify length (X=length=2, 3, 4, 8) <sup>(10)</sup>
<b>Notes</b> (6) Emergency not available in 2ft, or 3ft lengths. (7) Does not include stem, chain, or y-toggle (see page 4 for order information). (8) GSKLNS option is standard with WL option not necessary in catalog.		<b>Notes</b> (9) Compatible with HVSL2 (reference option/accessory page for bracket dimensions). (10) Compatible with HVSL2-SQ (reference option/accessory page for bracket dimensions). (11) Accessories sold separately will be separately analyzed under domestic preference requirements. Consult factory for further information.

## Product Specifications

## Housing

- Heavy duty, 18 ga. steel housing and end caps provide rigid construction
- Stainless-steel and die-formed aluminum available
- End caps provided with 7/8" KO for continuous row mounting
- Pendant mount standard with (2) 7/8" KOs in the housing back (all lengths except 2'). Stem sets ordered separately as accessory item
- Finished in matte white paint standard. Optional architectural colors available

## Fasteners

- White painted Hex-head screws (4) secure the lens to the housing
- Stainless steel TORX®T20 (SF1) with center reject pin and allen head with center pin reject screws (SF3) optional
- Optional flush side screws (FSS or FSSTP) painted matte white

## Lens

- One-piece extruded UV stabilized, diffuse polycarbonate
- Unique linear ribbed design provides even light distribution while obscuring LED boards
- Internal ribs and smooth exterior reduce dirt build-up and facilitates cleaning.
- Nominal lens thickness = 0.085"

## Reflector

- 18 ga. Steel with white high reflectance polyester powder coat finish. Reflector serves as driver and wireway cover.
- Reflector serves as driver and wireway cover

## Mounting

- Surface mount standard, wall or ceiling.
- Continuous row using end knock-outs

## Light-Emitting Diode (LED)

- LEDs available in 3000K, 3500K, 4000K and 5000K with minimum 80 CRI.

## Transformer/Driver

- Electronic driver. 0-10V dimming standard
- Optional 10% and 1% dimming

## Compliance

- cULus listed for damp locations standard
- Wet location under covered ceiling optional, wall or ceiling mount

## Warranty

- Five-year warranty on LEDs and electrical
- Fail-Safe will repair or replace any vandal resistant / high abuse luminaire, that is deemed non-functional due to physical damage to the luminaire exterior housing or polycarbonate lens. The luminaire must be installed correctly, and the warranty does not include any interior component, nor does it include damage due to gunfire, paint, caustic material / chemicals, disastrous or abnormal events.

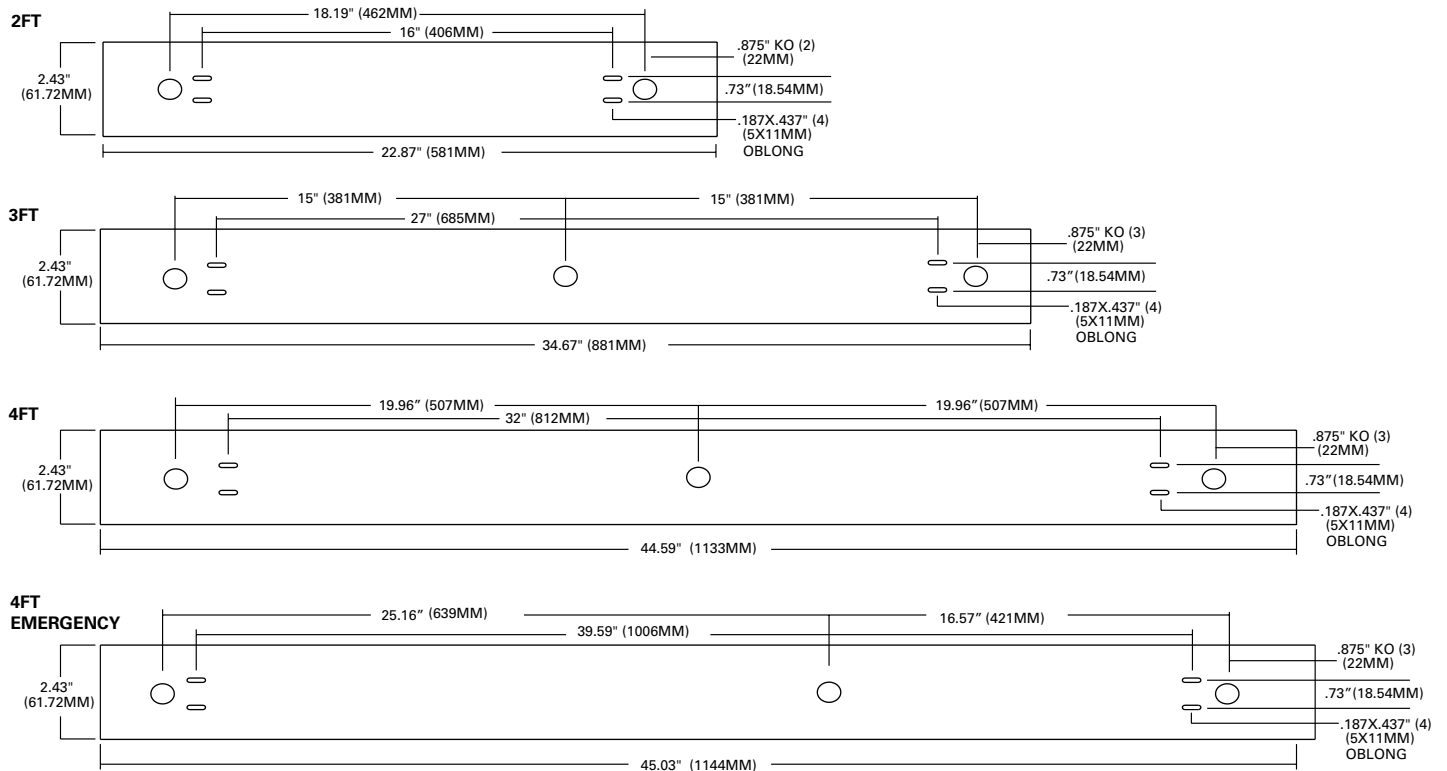
## Nominal Input Watts/Delivered Lumens - 4000K

[View IES files](#)

Fixture	Length	Illumination Level	Nominal Input Watts	Opal Lens	
				Nominal Delivered Lumens	LPW
HVSL2 (4000K)	2'	LO	11.5	1422	123.7
		STD	16.4	1831	111.6
		HI	21.6	2357	109.1
	3'	LO	17.3	2133	123.3
		STD	24.6	2747	111.7
		HI	32.4	3535	109.1
	4'	LO	23.1	2843	123.1
		STD	32.7	3662	112
		HI	43.1	4712	109.3
	8'	LO	46.7	5685	121.7
		STD	66.1	7324	110.8
		HI	87.2	9425	108.1

• Nominal input wattage values include LED voltage, drive currents and typical driver efficiency. Refer to LM79 data/photometric files for exact delivered lumen values and input wattage. Values in table are nominal values only.

## Dimensional and Mounting Details

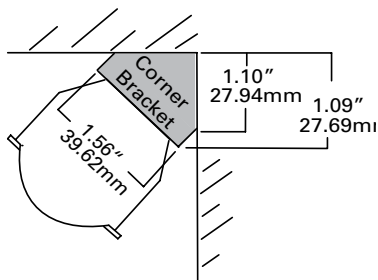


## NOTE:

\* 8' Fixture incorporates (2) 4' fixtures, attached at the factory, and one single 8' length lens

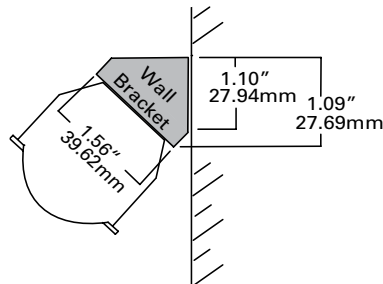
## Corner Mount Bracket (Accessory)

**HVSL2-X-CM/BKT**=HVSL2 Corner Mount Bracket, specify length,(X=2, 3, 4,8)

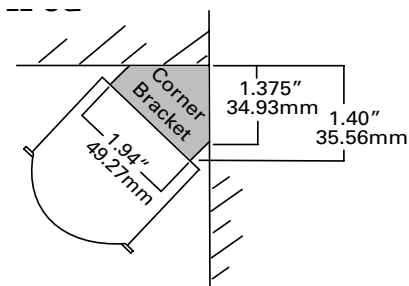


## Wall Mount Angle Bracket (Accessory)

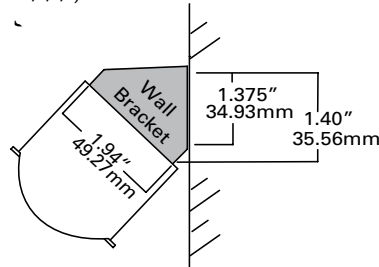
**HVSL2-X-WMAB45**=HVSL2 Wall Mount Angle Bracket, 45 degree, specify length, (X=2, 3, 4,8 )



**HVSL2-SQ-X-CM/BKT**=HVSL2-SQ Corner Mount Bracket, specify length, (X=2,3,4,8)

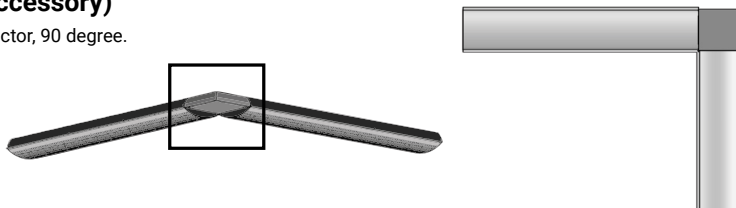


**HVSL2-SQ-X-WMAB45**=HVSL2-SQ Wall Mount Angle Bracket, 45 degree, specify length, (X=2,3,4,8)



## HVSL2 - Corner Connector (Accessory)

**HVSL2-CRNR/CONN**=HVSL2 Corner Connector, 90 degree.



## Pendant Mount: Suspension Sets - Stem Sets (Option)

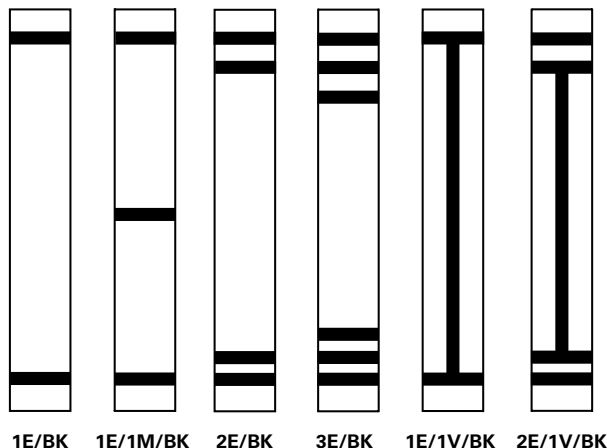
**XX**=Length (6, 8, 12, 24, 36, 48, 60, 72)

**SCF-XX-B**=Fixed Stem Set

Used with all surface fixtures as stem sets. One set consists of one stem assembly. Minimum of two sets required per fixture. Not rated WL under covered ceiling.

**NOTE:** Coupler, 3/8" IPS Pipe Coupler to join lengths. Coupler is standard baked white enamel or special order of black. Must specify pendant mount (PMSC or PMY) option on luminaire.

## Decorative Lens/Bands (Option)



## Ordering Logic (Add to end of fixture catalog #)

Examples: HVSL2-4-LD4-1STD-40-UNV-0-EDC1-1E/BK

No of Horizontal Band and Location	Vertical Band	Band Color
<b>1E</b> =1 Band on End <b>2E</b> =2 Bands on End <b>3E</b> =3 Bands on End <b>1M</b> =1 Band in Middle <b>2M</b> =2 Bands in Middle <b>3M</b> =3 Bands in Middle	<b>1V</b> =1 Band Vertical	<b>BK</b> =Black <b>BR</b> =Bronze <b>BL</b> =Blue

### Notes:

\*Bands are 1/2" thick

\*Bands are high durability paint finish

\*For custom colors, please furnish RAL# or paint manufacturer/catalog number

\*For other variations or colors not shown, please issue PDR